

Coltite Natural Glazed Louvred Ventilator

Colt Tollfab Pty Ltd

Coltite – Natural Motorised Ventilator

Introduction

Coltite is a natural louvred ventilator for installation into the façade for both day to day and smoke ventilation. It is available in a wide range of sizes, louvre options and control options.

Product Specification

Generic Options Dimensions - Depending on the version selected, overall widths are available from 250mm to 1800mm overall frame width, and from 200mm to 3000mm overall frame height as one module.

Louvres There is the choice of glass with a thickness of between 4 - 8 mm for the double glazed systems and between 8, 10 and 12 mm for the single glazed version.

Unit Options

LWN Framed

Non thermally broken outer frame
Non thermally broken louvre frame

LWT28 Framed

Thermally broken outer frame - 28mm
Thermally broken louvre frame - 28mm

LWT32 Framed

Thermally broken outer frame - 32mm
Thermally broken louvre frame - 32mm

LWS 45 Chamfered

Thermally broken outer frame
Frameless chamfered edge glass louvres

LWS Overlapping

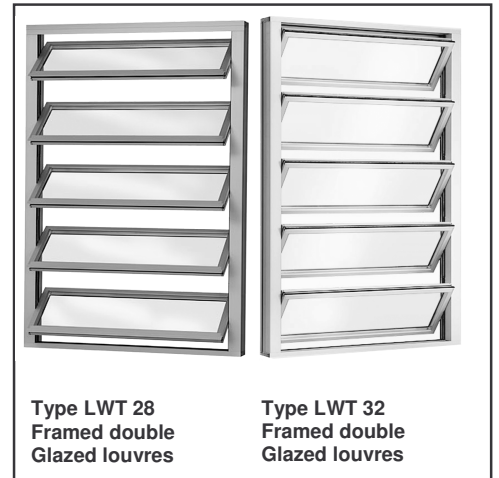
Non thermally broken outer frame
Frameless overlapping glass louvres

LWST Flush Framed

Double glazed panel
30mm overall glass panel thickness

LWI Hidden Controls

Double glazed panel
28mm overall glass panel with hidden controls



Type LWT 28
Framed double
Glazed louvres

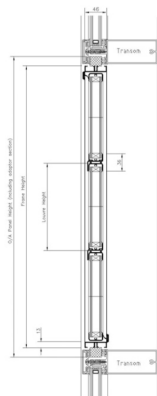
Type LWT 32
Framed double
Glazed louvres



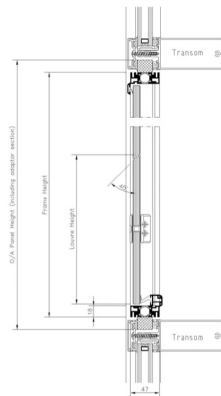
Type LWS 45
Frameless Louvre
Chamfered Edge

Type LWI
Framed louvres
Hidden Controls

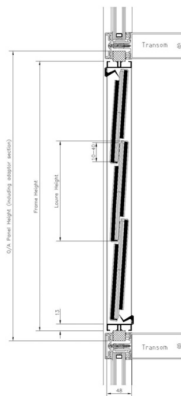
Sectional Details



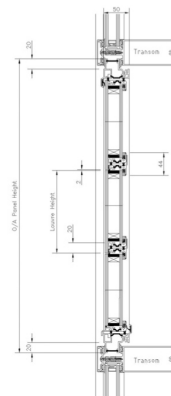
Coltite LWN



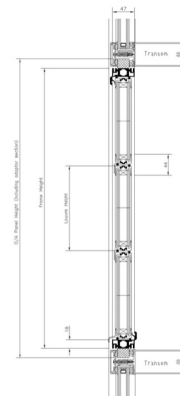
Coltite LWS45
Chamfered



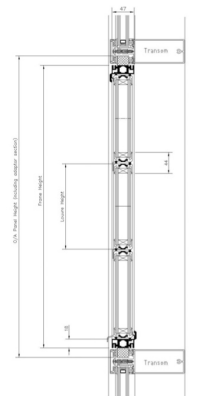
Coltite LWS
Overlapping



Coltite LWST



Coltite LWT28



Coltite LWT32

Colt Tollfab Pty Ltd.

Telephone: +61 2 9828 2500
Fax: +61 2 9609 6969

Email: info@colt-tollfab.com.au
Web: www.colt-tollfab.com.au

