



## Doors

Today's architecture in Australia aims to maximise natural light without the massive loss of thermal qualities and increased air infiltration that can reduce the energy rating for the overall building. Paarhammer have proven that top energy ratings can be achieved with our special frames, seals and unique metal-to-metal locking system.

It's why the award-winning Paarhammer glass doors achieve unmatched energy ratings and the lowest air infiltration, achieving energy savings up to 85%. Custom made in Australia, these doors have an ultimate strength test of 2300pa (N4), with the Wood-Alu Range N5/C3, and water penetration of 150pa, giving our door systems unparalleled strength and security.

The design flexibility of our glass doors has been proven time after time. We manufacture bi-fold doors of up to 10m (30ft) wide and sliding doors over 3m (12ft) high.

Featuring our secure locking system, our doors achieve U-values of 1.0 and reduce noise up to 80-90%. It's not surprising that our solutions are suitable for the most demanding projects including Passive House.

### Lift-slide



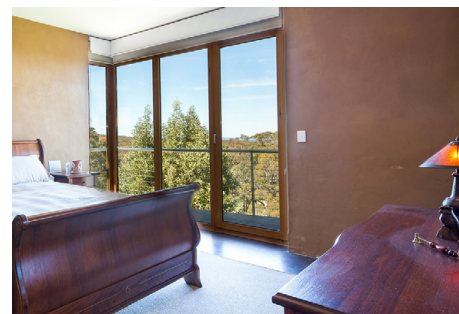
### Bi-fold



### French

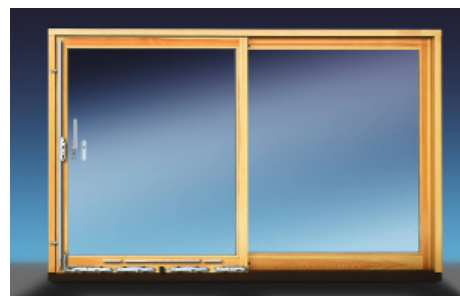


### Hinged glass doors





Technologically advanced sliding doors offer the highest energy efficiency and no drafts through multi-layer seals and engineered lift-slide action. Available in many configurations.



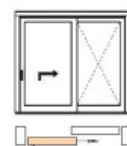
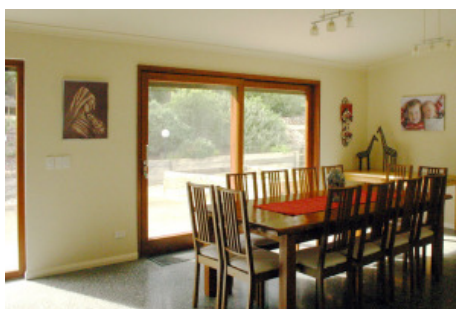
## Specifications

- Timber frame thickness IV 68mm
- Pronounced joints
- Double glazed with 1x 14-20mm airgap, depending on glass thickness
- Choice of glass combinations
- Komfort+: low VOC spray-painted or stained in the colour of your choice
- Komfortline: primed and paint ready
- German lift-slide hardware, multi-point locking
- Multi-layer seals to eliminate drafts, night vent
- Suited for bushfire areas up to and including BAL-29

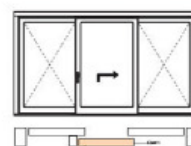
## Size:

- Weight up to 300kg per slider
- Width up to 2400mm per slider
- Height up to 2400mm

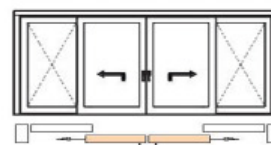
WERS energy rating: from a very low 1.8



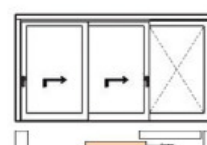
Scheme A



Scheme G



Scheme C



Scheme E





Rebated frames, seals, multi-point locking and double or triple glazing ensure the highest energy efficiency with no rattling. Operated with a handle on every second door, there is no need for shoot bolts.



## Specifications

- Timber frame thickness IV 68mm
- Pronounced joints
- Double glazed with 1x 14-20mm airgap, depending on glass thickness
- Choice of glass combinations
- Komfort+: low VOC spray-painted or stained in the colour of your choice
- Komfortline: primed and paint ready
- German hardware, multi-point locking
- Seals to eliminate drafts
- Inward opening with tilt function, depending on configuration
- Operated with a handle on every second door, no shoot bolts
- Suited for bushfire areas up to and including BAL-29

## Size:

- Width up to 8m (depending on height)
- Height up to 2.4m (depending on width)

WERS energy rating: from a very low 1.8



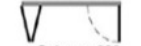
Scheme 431



Scheme 321



Scheme 330



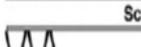
Scheme 651



Scheme 633



Scheme 651



Scheme 633



Scheme 651



Scheme 633



Scheme 541



Scheme 550



Scheme 532



Scheme 532



Scheme 761



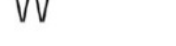
Scheme 770



Scheme 743



Scheme 743



Scheme 743





Enabling easy access to verandahs and outdoor spaces, French doors are custom made with high energy efficiency, high noise protection and no drafts, due to rebated frames, seals and multi-point locking.



## Specifications

- Timber frame thickness IV 68mm
- Pronounced joints
- Double glazed with 1x 14-20mm airgap, depending on glass thickness
- Choice of glass combinations
- Komfort+: low VOC spray-painted or stained in the colour of your choice
- Komfortline: primed and paint ready
- German multi-point locking hardware
- Seals to eliminate drafts
- Suited for bushfire areas up to and including BAL-29

## Size:

- Width up to 2400mm
- Height up to 2400mm

WERS energy rating: from a very low 1.8





High security is ensured with multi-point locking, and 3-D-adjustable hinges and seals work together to ensure a draft-free fit. Barrier-free threshold available.



## Specifications

- Timber frame thickness IV 68mm
- Pronounced joints
- Double glazed with 1x 14-20mm airgap, depending on glass thickness
- Choice of glass combinations
- Komfort+: low VOC spray-painted or stained in the colour of your choice
- Komfortline: primed and paint ready
- German multi-point locking hardware
- Seals to eliminate drafts
- Suited for bushfire areas up to and including BAL-29

## Size:

- Width up to 1300mm
- Height up to 2400mm

WERS energy rating: from a very low 1.8

