



Case Study

Repeat Experience



Product Range: Wood-ALU

Composite windows and doors

The best of both worlds: energy efficient timber with no exterior painting

Architect: Peter Dunn, Morton Dunn Architects

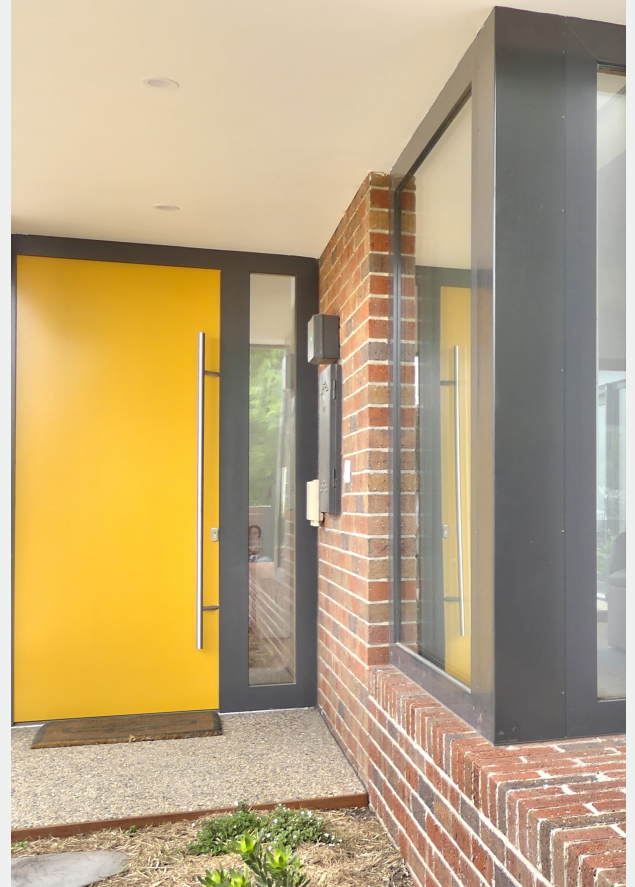




Challenge

Building their 'Forever Home' the owners wanted it to be easy care, low maintenance and high energy-efficiency.

Their home had to be accommodating for their later years with low thresholds, easy to open sliding doors and no painting of windows and doors.





Solution

Having incorporated Paarhammer windows and doors in their previous home, it was just a matter of which product range to use for this build. The answer for high energy efficiency and low maintenance was composite Wood-Alu with triple glazing.

Large glazed area to the north invite the winter sun inside and reduce energy requirements while increasing thermal comfort. Lift-slide sliding doors are easy to use and connect the interior with outdoor entertaining areas.

These products have been tested to AS2047 and achieve:

Housing Rating of N6/C4,
Water Penetration Resistance Pressure 600Pa
Air Infiltration Level: Low
Ultimate Limit State Pressure:
tilt & turn windows +/-5900 Pa
lift-slide doors +/-3500 Pa

