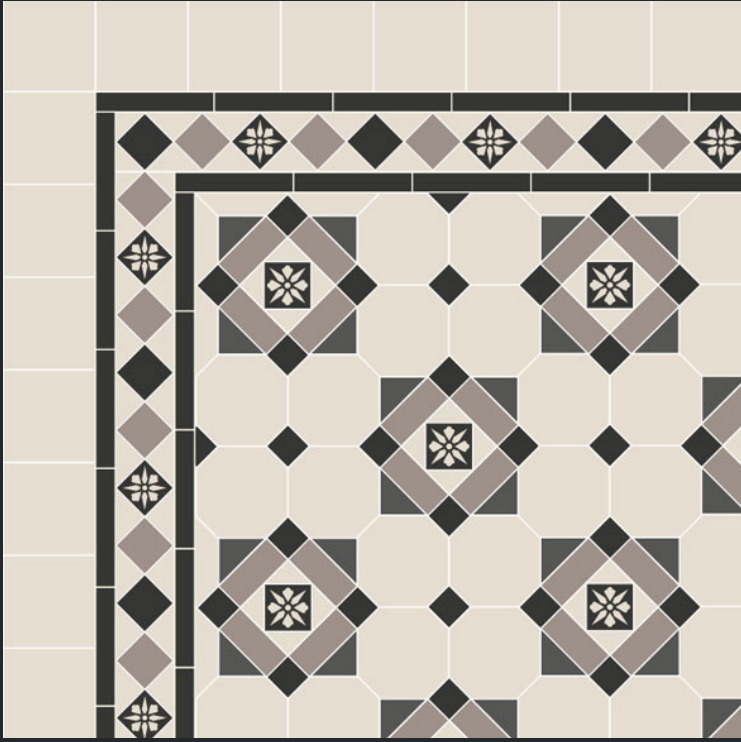




Tessellated™  
TILE FACTORY



## CASE STUDY GLASGOW

A popular design in black, grey and white which incorporates hand-printed decorative tiles. Shown here with decorative version of the Norwood border.

### History of Tessellation

A tessellation or tiling covers the surface using one or more geometric shapes with no overlaps and no gaps, it is a repeating pattern of decorative shapes. These geometric designs can be simple or complex patterns that create show stopping designs.

Tessellation in Australia started in the 1700s during the colonisation era where European influences dominated the architectural structure. During this era tessellated tiles were also influenced by Georgian architecture where tiling patterns typically featured two to three colours in simple geometric designs. It was until patterns shifted away from simple, monochromatic look to more vivid colours and complex tile patterns. Encaustics are used extensively in this period.

With roots in the Middle ages, tessellated tile floors have a lengthy history. In the 19th century, they were used in both domestic and commercial architecture because of their resilience, strength, range of designs, and suitability for use in a variety of settings.

Known for their beautiful and engaging geometric patterns, a properly executed tessellated tile design can offer something that no other tiling design can. While they are traditionally found in Australian heritage homes, they come with unlimited potential for different designs in everything from modern buildings to rustic living spaces to charming restaurants, hotels, and boutique shops.

# Objectives

## Aesthetic Appeal

The aesthetic features of tessellated tiles are the shape size, colour and tessellated pattern design. Glasgow is a popular tessellated design as the pattern repeat incorporates different shapes and sizes to make the design.

## Shape Size

The shape size has everything to do with the make up of tessellated tiles. Shapes play an important part in the construct of tessellation. Glasgow incorporates shapes such as octagons, squares, triangles, rectangles and encaustic tile designs.

### Glasgow Pattern Repeat



	Encaustic	46 x 46	Black; White
	Octagon	96 x 96	White
	Rectangle	66 x 35	Grey
	Square	35 x 35	Black
	Triangle	65 x 45 x 45	Charcoal
	Triangle	45 x 33 x 33	White

## Colour

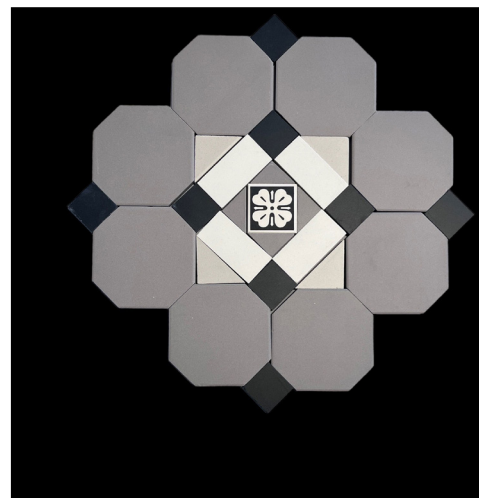
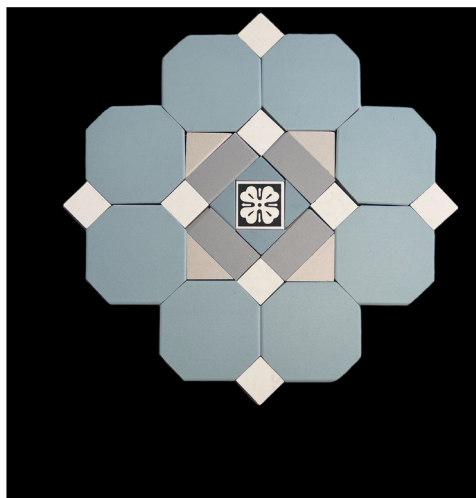
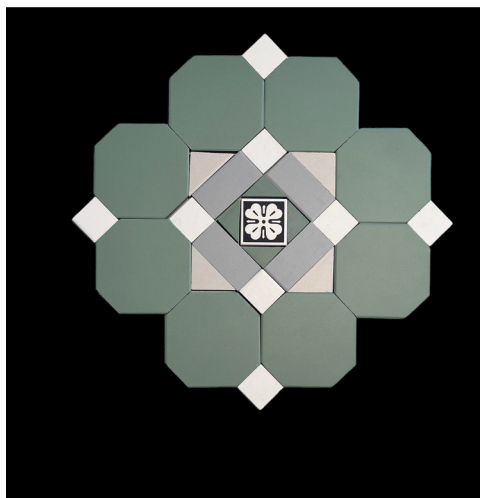
Glasgow tessellated pattern incorporates four different colours and an encaustic tile to create this design. The colours are white, grey, black and charcoal. The play of colour defines the tessellated pattern and creates a spectacular overall piece. When deciding on colours there is always other aspects to consider such as the area on which you are placing the tessellation.

In residential applications you need to take into account the colour of the front facade of your dwelling from the fixtures, accents and architectural structure such as heritage buildings. This will guide your colour selection and also decide on the pattern you are to choose. Such patterns and certain colours are relevant with certain periods such as colonial, Victorian or Art deco.

In commercial applications other aspects to consider are the clients brand identity and the area where the tessellation will be placed. Tessellated Tile Factory has 20 different curated decor colours to suit current and classic trends.

## Tessellated Glasgow Pattern Designs

Glasgow tessellated patterns can have a different result depending on the colour selected. Presented are different popular colour flat lays to inspire you.



## Longevity

The prospect of designing a distinctive look that elevates your project from ordinary to extraordinary can be both exciting and intimidating given the variety of flooring options available. When tessellating your property the element of investment is always a consideration. Choosing the right tessellated pattern to fit your home design is highly important as it will increase your property value.









# Solution

## Durable

The appearance, functionality and lifespan of your tessellated floor are all impacted by the quality of the tiles. The best tessellated tiles are made from fully vitrified porcelain. The tiles are baked using extremely high heat. Fully vitrified porcelain tiles are strong, long-lasting, scratch-, impact-, acid-, alkali- and water resistant. Their superior durability makes them appropriate for use both indoors and outdoors, especially in high-traffic areas such as walkways and steps, and even in busy commercial spaces. Their water-resistant properties also enable their specification for areas in which moisture is expected, such as pool surroundings and bathrooms.

## Hygiene & Sustainability

Tessellated tiles are non-porous surface meaning they are low maintenance product. Everyday cleaning is minimal and there is no need to use harsh chemicals. In addition such tiles are hypoallergenic, meaning they dramatically reduce the level of allergens, such as dust and pollen, within an indoor space. Tiles also do not emit any toxic fumes when exposed to high temperatures.

Fully vitrified porcelain tiles are not only healthy for occupants, but also the environment. Made of naturally occurring materials, these products are plastic free and, as such do not contribute to plastic pollution. In addition the durability of tiles means that they have a long lifecycle, reducing the amount of natural resources needed to repair or replace them.

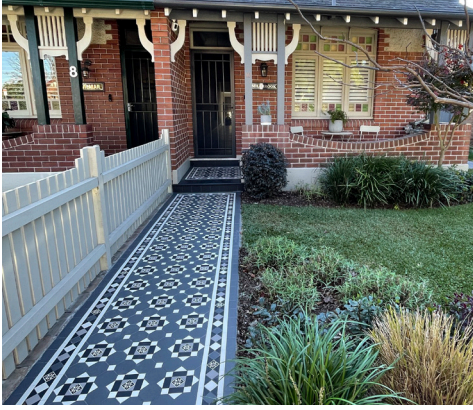
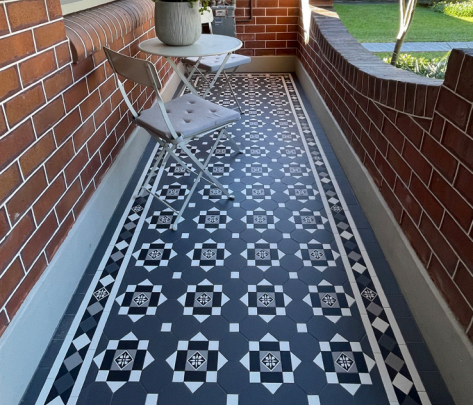


**Hygienic &  
Non-porous**





Projects









Tessellated™  
TILE FACTORY

T. 02 8964 3430

Sydney Showroom

A. 151-153 Parramatta Road, Annandale NSW 2038

W. [www.ttfactory.com.au](http://www.ttfactory.com.au)