

Brio®



Brio® where ideas unfold

## Brio® Zero Clearance

Top hung straight sliding architectural systems  
for panels up to 350kg

## **Brio® where ideas unfold**

Watch your adventurous architectural ideas unfold into exciting reality with the Brio range of sliding and folding door hardware.

Brio is passionate about shaping the spaces in which people live, work and play. With subsidiaries in the UK and USA – Brio is recognised by architects worldwide as a leading design and manufacturing company.

Brio's R&D department brings a strong design element to the business, developing and testing ground breaking concepts that continue to be at the forefront of the industry.

So it's no surprise our name Brio translates to Energy, Spirit and Vitality – the core values that drive us to always discover new solutions for our customers.

We are committed to the continuous improvement of quality. That is why Brio, located in Sydney, is certified to Quality Management System AS/NZS ISO 9001:2008.

Brio, part of the Allegion family of brands









# Zero Clearance Glass

## Zero Clearance Glass 80, 100 and 120

Open plan interiors allow daylight to flood rooms which would otherwise be limited to only dull ambient or harsh task lighting in homes and offices. Privacy and acoustic insulation are however important in many day to day activities, which is why Brio's Zero Clearance Glass provides the perfect balance of open plan benefits with the practicalities of room dividers.

Glass panels bring a new dimension to minimalism, which is accentuated with our virtually invisible 2.5mm clearance between glazing rail and track. The clean lines achieved by concealed hardware and low profile glazing rail allow the panel to appear as if suspended between floor and ceiling.

## Zero Clearance Glass 180

For larger applications where panels need to move effortlessly, use our higher rated Brio Zero Clearance Glass to encapsulate a space or to expand a room. Whether open or closed glass panels are unobtrusive and allow life to flow in all environments.

An adjustable guide and versatile fittings allow 10mm and 12mm toughened glass panels to be accommodated by the same hardware for up to 180kg.



# Zero Clearance Timber

## Zero Clearance Timber 80, 100 and 120

When screened privacy or the desire for a visually impactful panel is preferred, Brio Zero Clearance Timber can create flexible office and living spaces.

The new Brio 120R track allows a seamless application in commercial office and retail fit-outs as the extruded track has side rails which support and dress the edge of ceiling tiles.

## Zero Clearance Timber 180 and 350

If sliding an access door, a room dividing wall or even artwork Brio Zero Clearance Timber will work smoothly. Panels can reach an impressive 3.3m high and 2.5m wide while appearing to float between floor and ceiling.

For applications up to 350kg, concealed hardware achieves clearances of 2.5mm between track and panel and the comprehensive Brio range of bottom channels and guides provides several options to extend the minimal zero clearance effect.



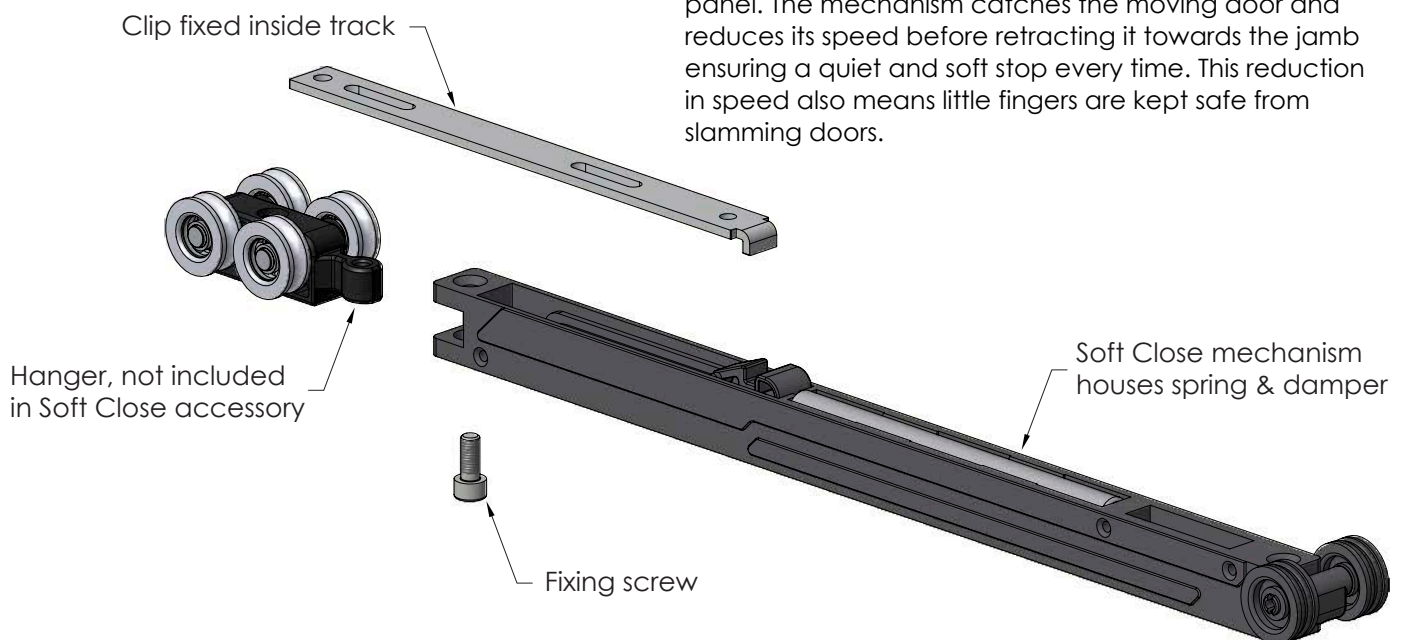


## Soft Close 100

### Zero Clearance 80 hanger shown

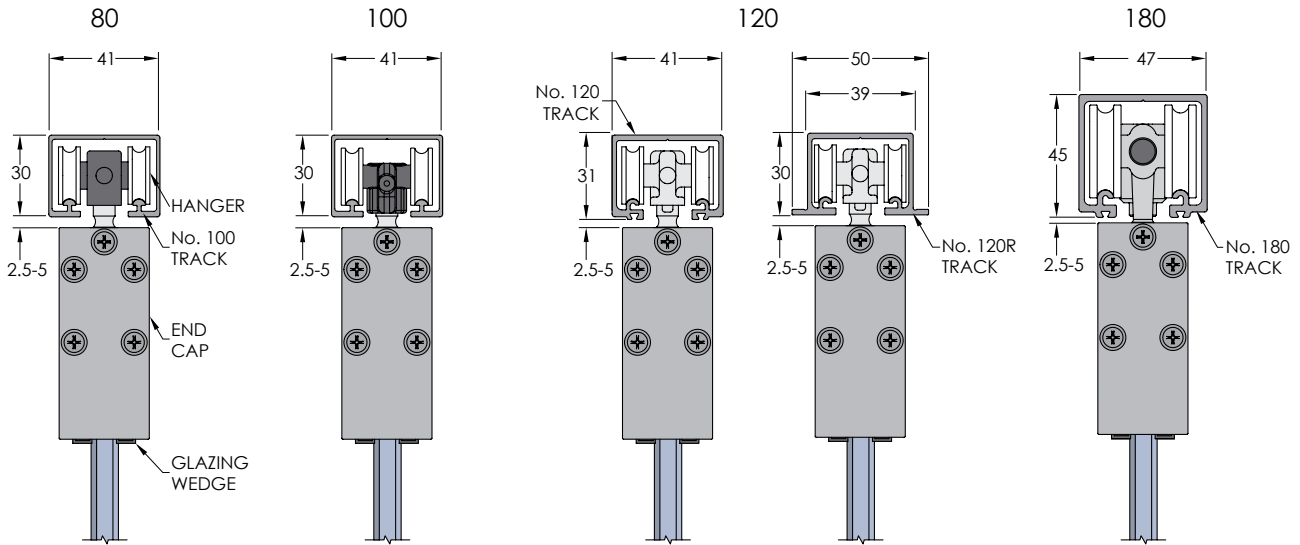
Brio's new Soft Close accessory is available for Zero Clearance Timber and Glass for panels up to 100kg. Our soft close works with the 80 series and 100 series hangers. The neat design allows the device to be housed inside the track ensuring minimum clearances between track and panel are maintained.

The Soft Close is easy to install and simple to operate as the spring and damper work together to control the panel. The mechanism catches the moving door and reduces its speed before retracting it towards the jamb ensuring a quiet and soft stop every time. This reduction in speed also means little fingers are kept safe from slamming doors.



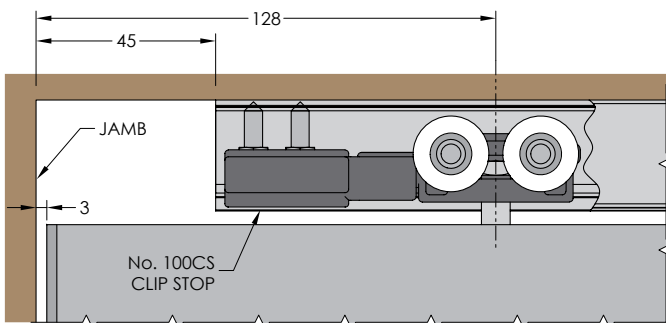


# Zero Clearance Glass

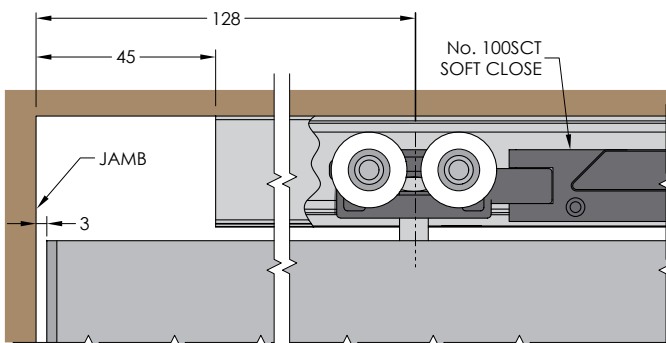


## TRACK FIXING CENTRES

20mm FROM EACH END, 400mm MAXIMUM SPACINGS



ZERO CLEARANCE GLASS 80 SYSTEM WITH CLIP STOP SHOWN



ZERO CLEARANCE GLASS 80 SYSTEM WITH SOFT CLOSE SHOWN

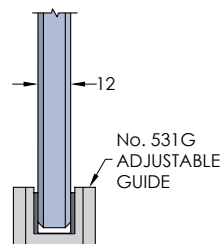
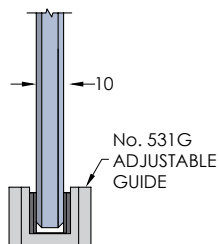
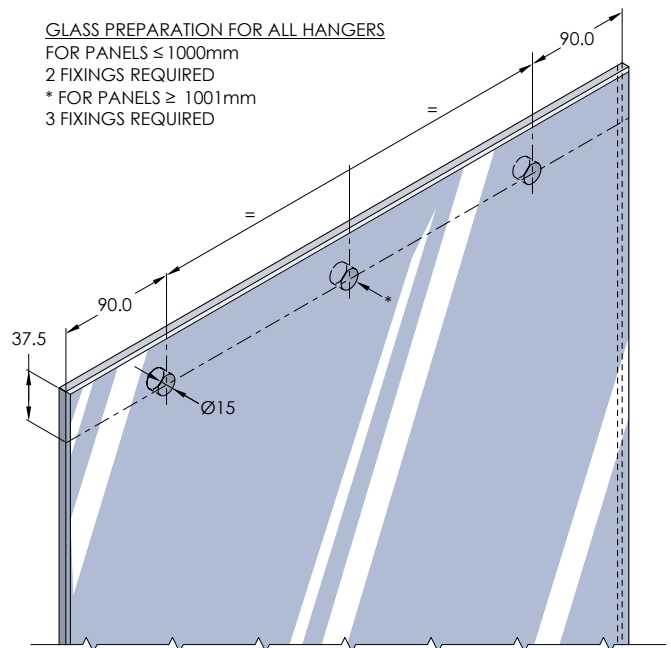
## GLASS PREPARATION FOR ALL HANGERS

FOR PANELS ≤ 1000mm

2 FIXINGS REQUIRED

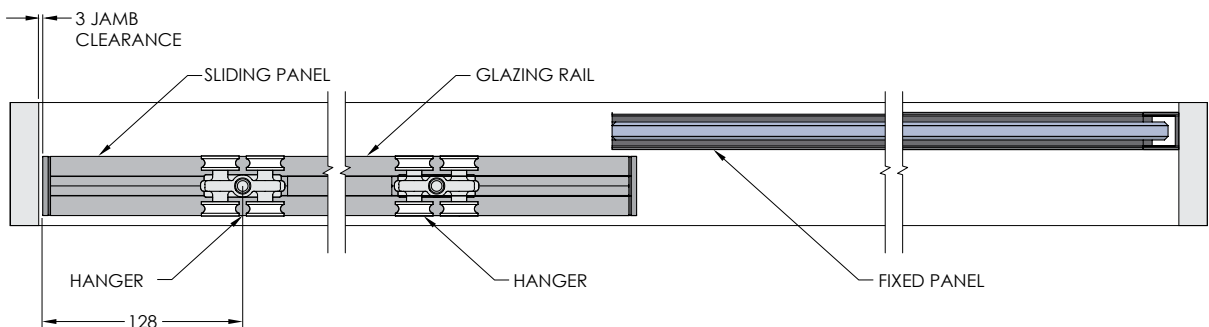
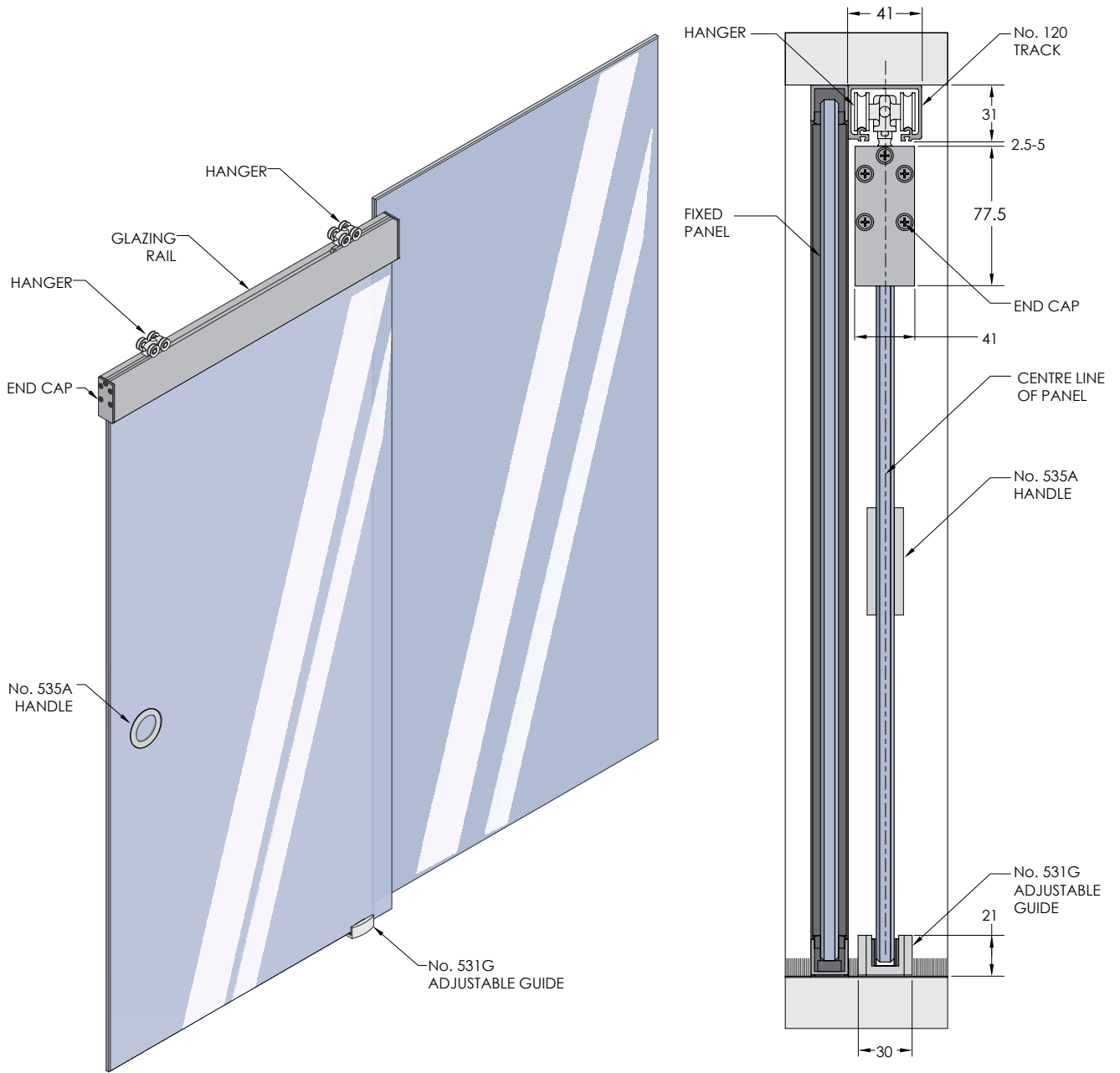
\* FOR PANELS ≥ 1001mm

3 FIXINGS REQUIRED

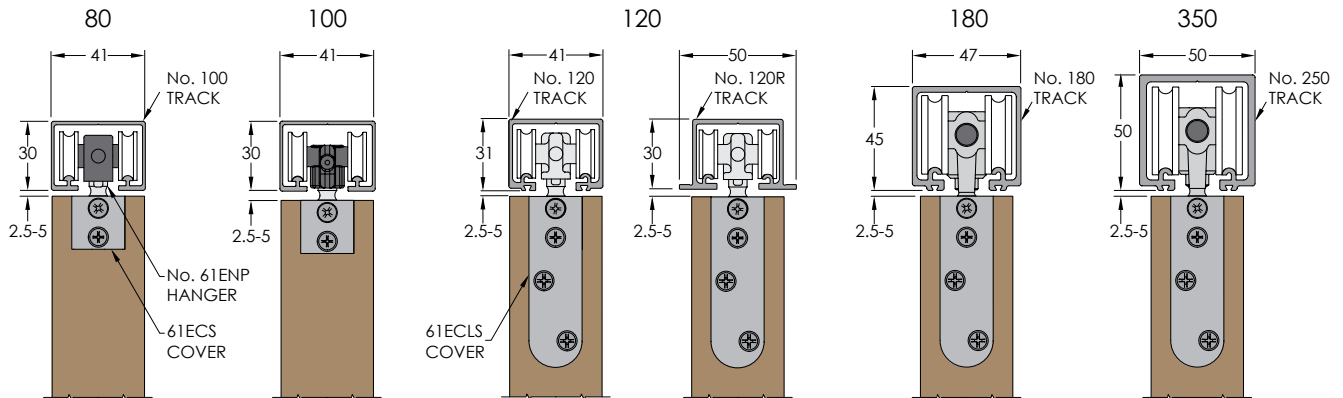


# Zero Clearance Glass Fixed Panel Application

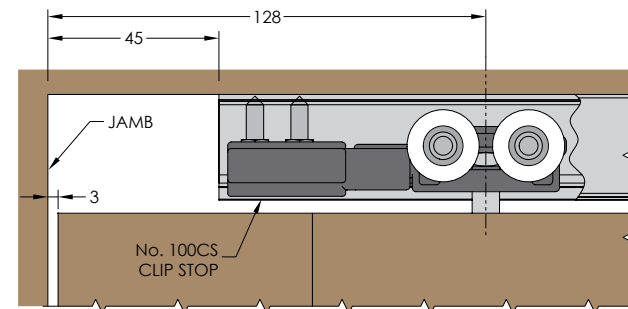
120 Series shown



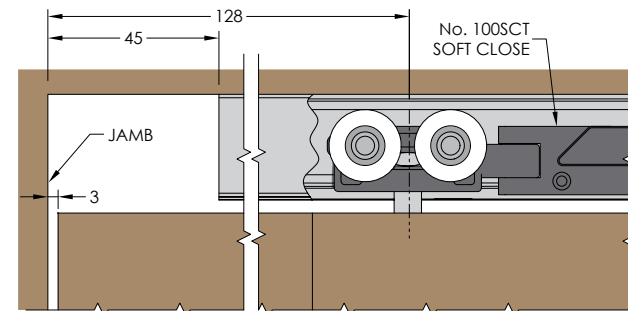
# Zero Clearance Timber



**TRACK FIXING CENTRES**  
20mm FROM EACH END, 400mm MAXIMUM SPACINGS

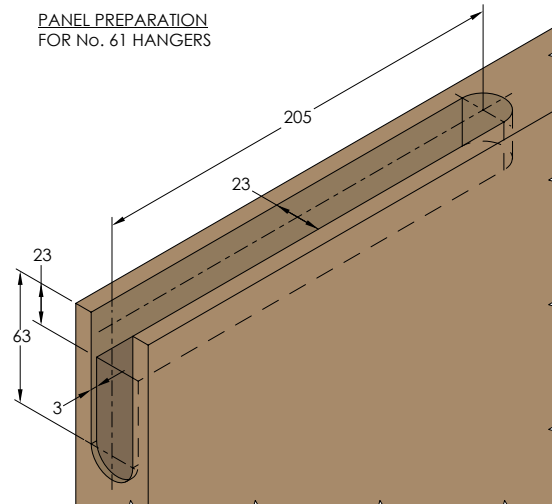


ZERO CLEARANCE TIMBER 80 SYSTEM WITH CLIP STOP SHOWN

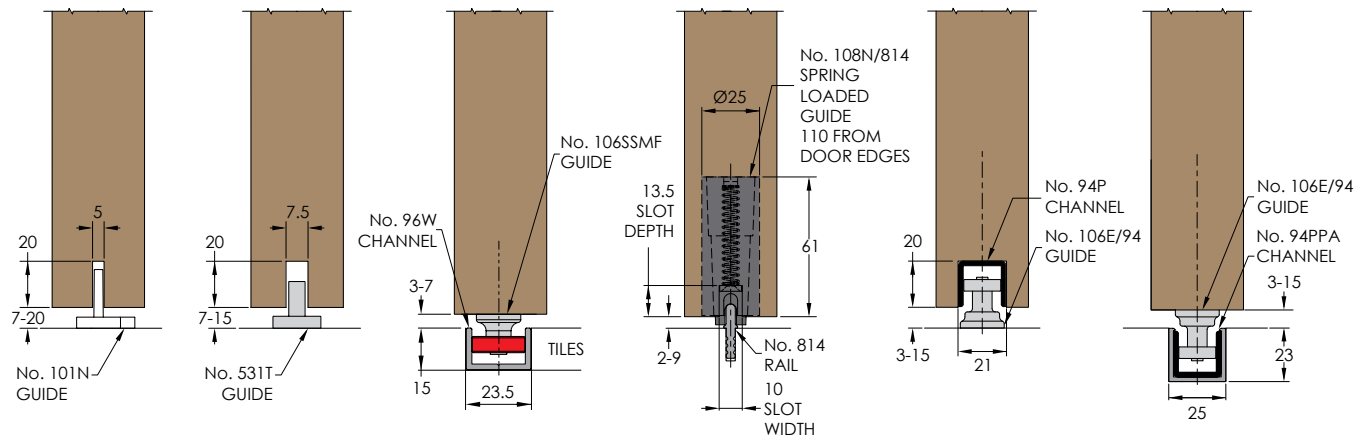


ZERO CLEARANCE TIMBER 80 SYSTEM WITH SOFT CLOSE SHOWN

**PANEL PREPARATION FOR No. 61 HANGERS**



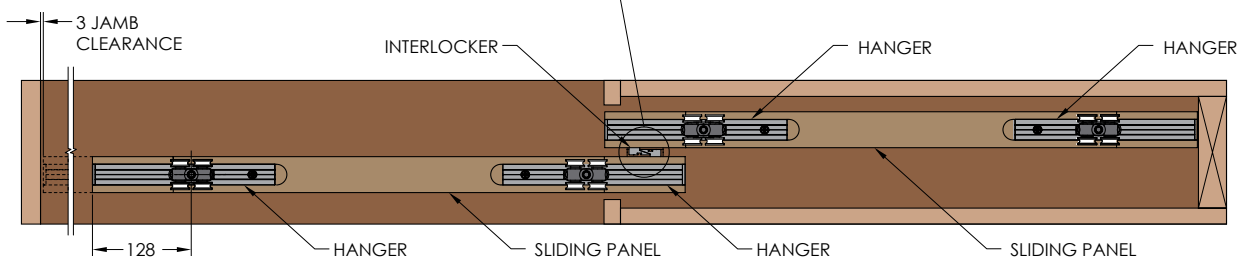
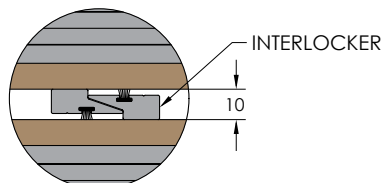
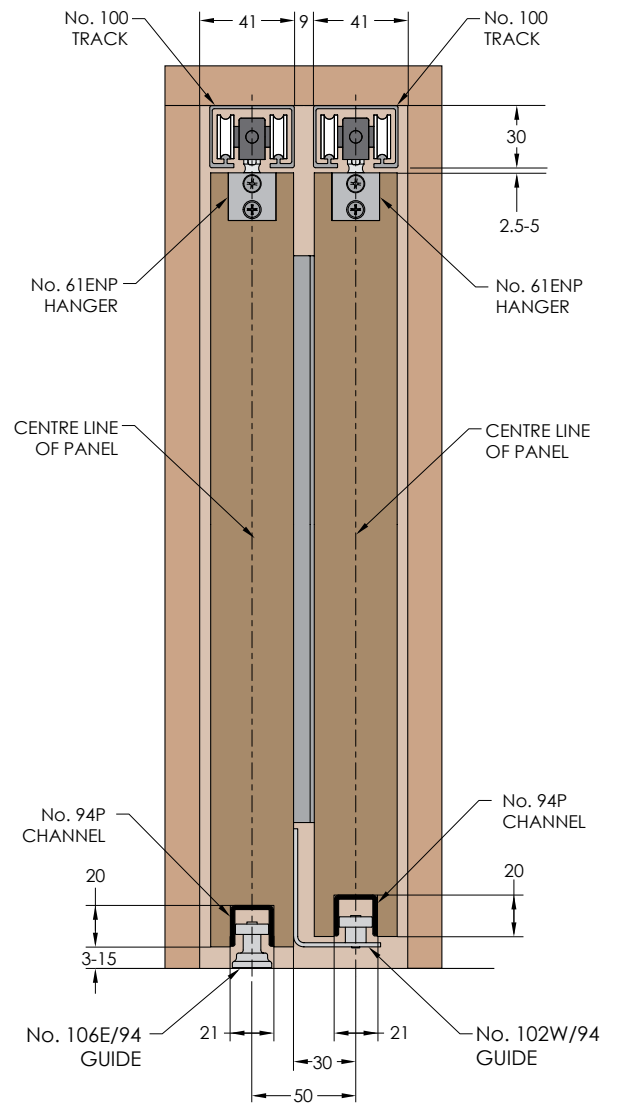
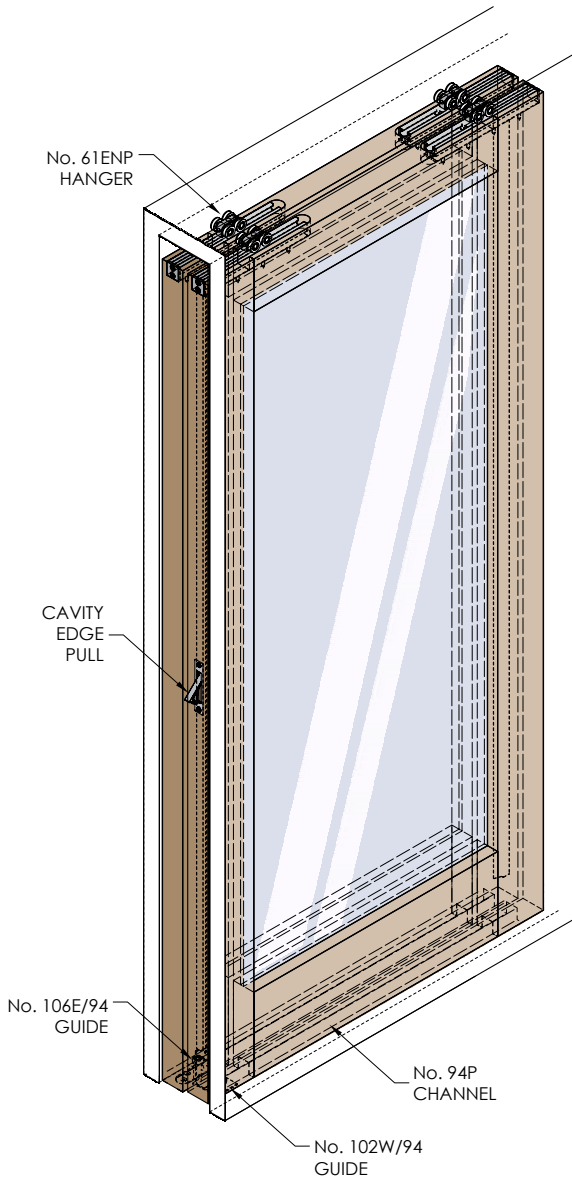
**GUIDE OPTIONS**





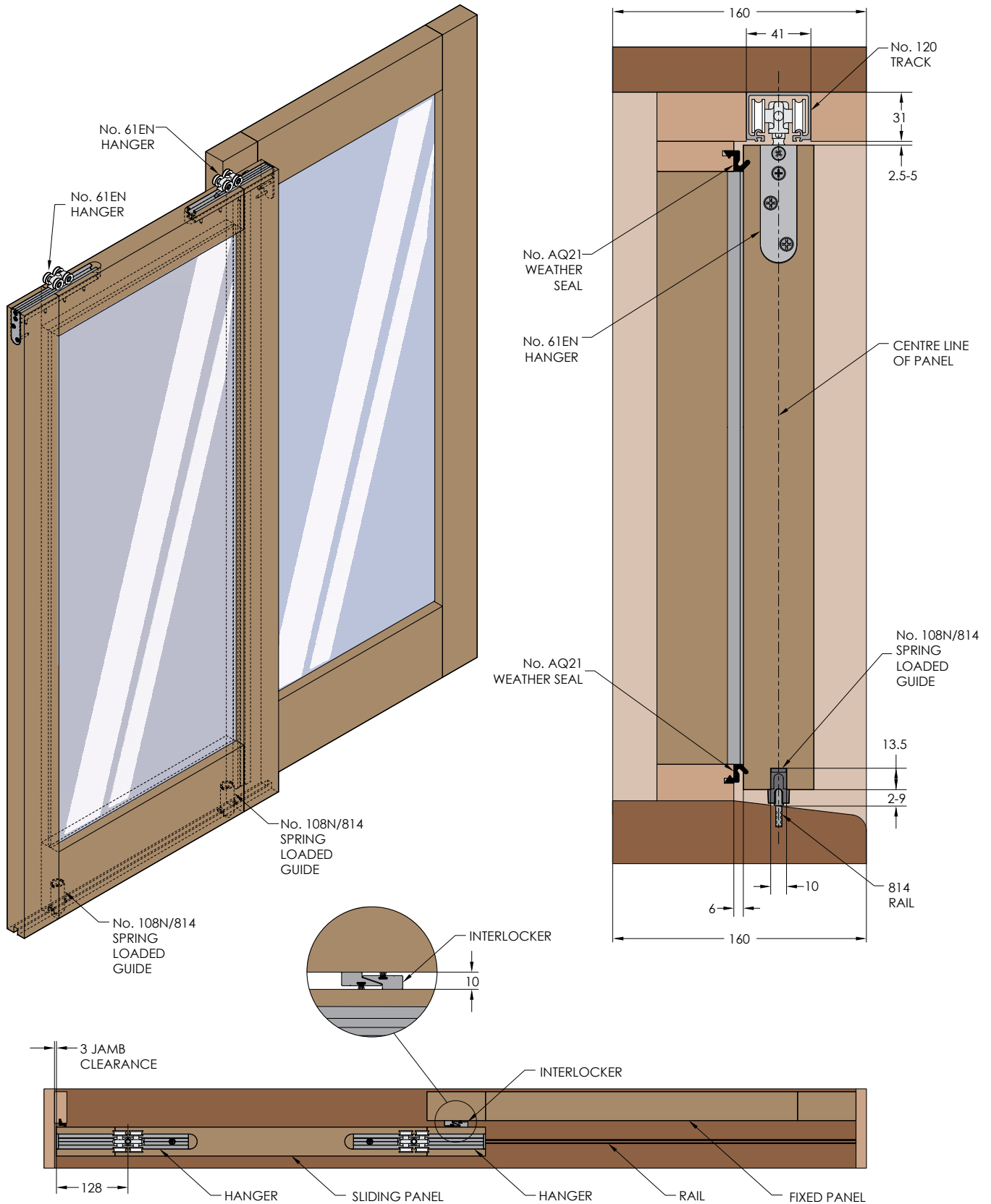
# Zero Clearance Timber Concealed Panel Application

80 Series shown



# Zero Clearance Timber Fixed Panel External Application

120 Series shown





# Specifications

## Zero Clearance Glass

Panel Specification	80 Series	100 Series	120 Series	180 Series
Maximum Panel Weight	80kg	100kg	120kg	180kg
Maximum Panel Height	3000mm			
Maximum Panel Width	1500mm			
Maximum Panel Thickness	12mm			
Minimum Panel Thickness	10mm			
<b>Pack includes 2 hangers, door stops, glazing rail, glazing bead, guide 531G, handle 535A and fixings</b>				
Single Panel ≤ 1200mm wide	ZG80-12/1	ZG100-12/1	ZG120-12/1	ZG180-12/1
Single Panel ≤ 1500mm wide	ZG80-15/1	ZG100-15/1	ZG120-15/1	ZG180-15/1
<b>Track</b>				
Aluminium Track	100	120 & 120R		180
Clear Anodising	25µm	25µm & 15µm		25µm
Standard Lengths	2000mm, 3000mm, 4000mm and 6000mm			
<b>Guide</b>				
Stainless Steel Adjustable Guide	531G			
<b>Accessories</b>				
Stainless Steel Adhesive Handle	535A			
Stainless Steel Glass Handle	535G			
Soft Close	100SCT	100SCT		

## Zero Clearance Timber

Panel Specification	80 Series	100 Series	120 Series	180 Series	350 Series
Maximum Panel Weight	80kg	100kg	120kg	180kg	350kg
Maximum Panel Height	3000mm	3000mm	3000mm	3000mm	3300mm
Minimum Panel Thickness	32mm	32mm	32mm	40mm	40mm
<b>Door Stop</b>					
Clip Stop	100CS	100CS			
Door Stop			120DS	180DS	180DS
<b>Hangers</b>					
Stainless Steel Precision Bearings	61SS/ENP	61SS/DN	61SS/EN	61SS/GN	61SS/HN
Chrome Precision Bearings	61ENP	61DN	61EN	61GN	61HN
<b>Track</b>					
Aluminium Track	100	120 & 120R		180	250
Clear Anodising	25µm	25µm & 15µm		25µm	25µm
Standard Lengths	2000mm, 3000mm, 4000mm and 6000mm				
<b>Guide</b>					
Sawcut Guide				101N	
Stainless Steel Sawcut Guide				531T	
Stainless Precision Bearing				106E/94	
Stainless Precision Bearing - Double Door				102W/94SS	
Nylon Spring Loaded Guide				108N/814	
<b>Channel</b>					
Polypropylene (for 106E/94)				94P	
Anodised Aluminium and Polypropylene (for 106E/94)				94PPA	
Anodised Aluminium Rail (for 108N/814)				814A	
Standard Lengths	2000mm, 3000mm, 4000mm and 6000mm				
<b>Accessories</b>					
Stainless Steel Timber Handle				535T	
Soft Close	100SCT	100SCT			

# Brio®

Brio – Australia

PO Box 604, Chester Hill, 2162  
C5 - C7, Regents Park Estate, 391 Park Road,  
Regents Park, NSW 2143, Australia  
Phone +61 2 8718 6718 Fax +61 2 8718 6719  
[www.brio.com.au](http://www.brio.com.au)  
email: [brío.sales@allegion.com](mailto:brío.sales@allegion.com)

Brio – UK

Unit 30 Gateway West, Kingfisher Boulevard, Newburn Riverside,  
Newcastle Upon Tyne, NE15 8NZ, United Kingdom  
Phone +44 (0) 191 2291224 Fax +44 (0) 191 2677891  
[www.briouk.com](http://www.briouk.com)  
email: [brío.sales.uk@allegion.com](mailto:brío.sales.uk@allegion.com)

Brio – USA

85 Mushroom Blvd  
Rochester, NY 14623-3201  
Toll Free +1 855 586 6251 Phone +1 585 319 5599 Fax +1 585 319 5741  
[www.briousa.com](http://www.briousa.com)  
email: [brío.sales.usa@allegion.com](mailto:brío.sales.usa@allegion.com)

## About Allegion

Allegion (NYSE: ALLE) is a global pioneer in the field of safety and security. We keep people and their property safe, wherever they are, bringing together simple solutions and advanced technology. Allegion is a \$2 billion company, with products sold in almost 130 countries. For more, visit [www.brio.com.au](http://www.brio.com.au)

