

BIM.**archiproducts**[®]



dott.gallina

POLYCARBONATE SYSTEMS & SHEETS

Dott. GALLINA BIM PRODUCTS - CONTENT AND USER MANUAL

Authoring Software Autodesk Revit 2018

This document provides information on the content and the correct use of the BIM files in Revit format produced by dott. GALLINA.

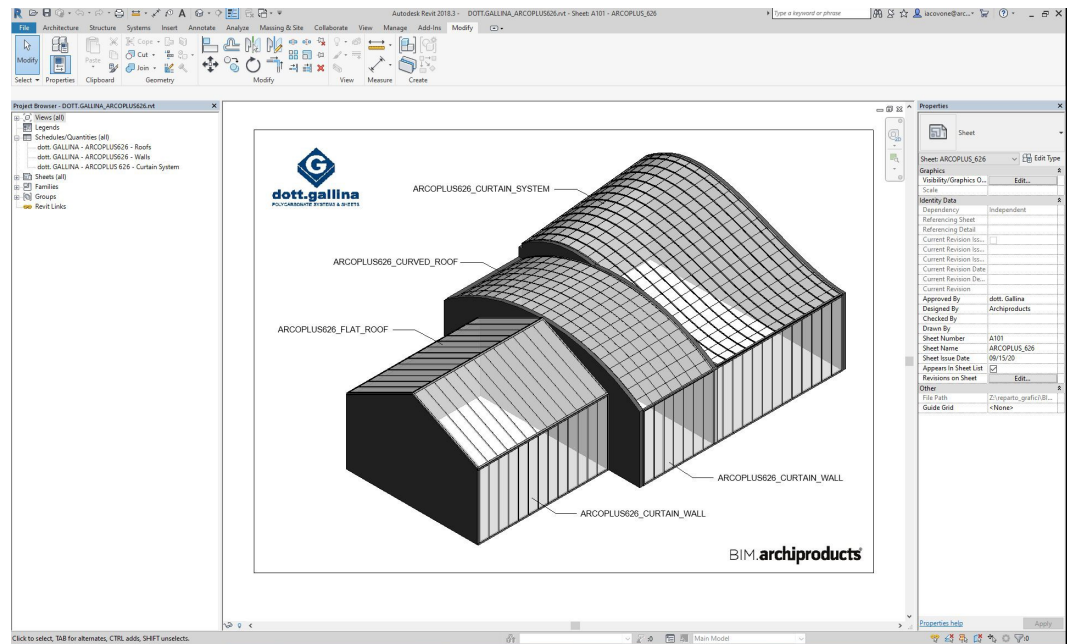
Nomenclatura e definizione dei file

The BIM product is contained in the .rvt format file "DOTT_GALLINA_Product Name"; the native file is created with the BIM authoring software Autodesk Revit 2018.

The project file contains the product in all its variants and the company information sheet (schedule) containing information relating to the product.

Other alphanumeric information about the product can be found in the Object's Properties Palette.

The designer/manufacturer who uses the dott. GALLINA BIM content can calculate the quantities of the products used in his/her project, manage the quantities for the purchase order and transfer the information relating to the product used to those carrying out the work.

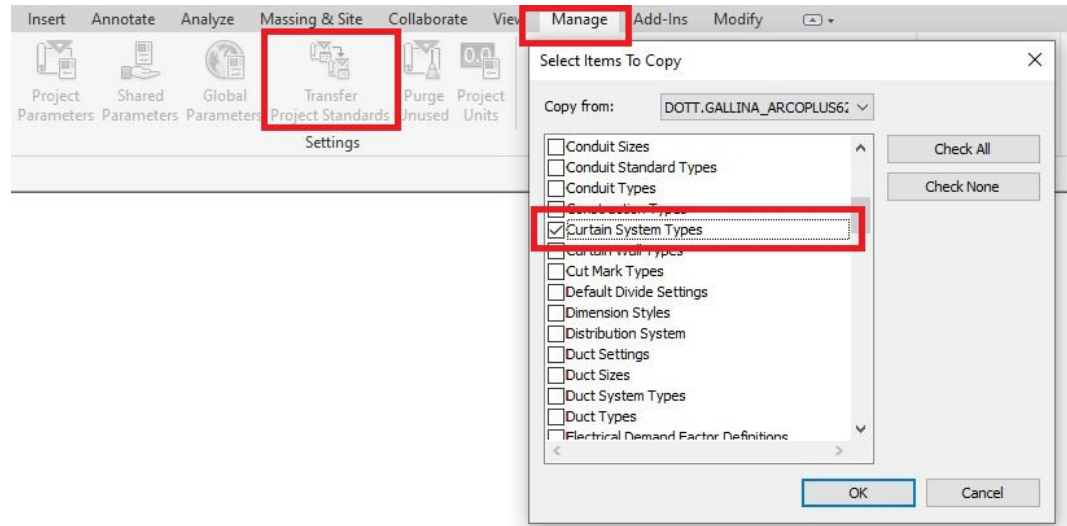


How to use dott. GALLINA BIM content

For a correct use of the files, follow the instructions below:

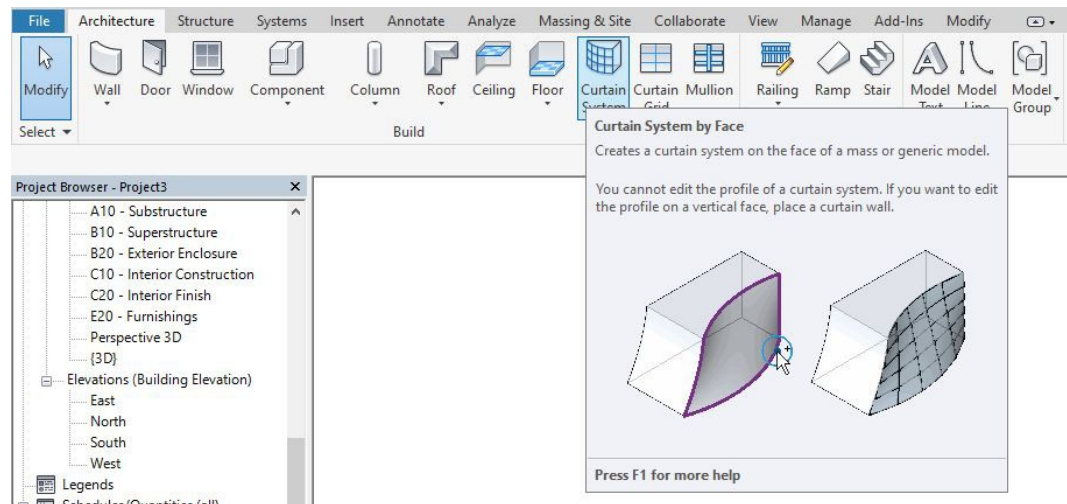
1. Download and save the DOTT_GALLINA_PRODUCT NAME.rvt file (or insert it through the bim.archiproducts plugin for Revit)
2. Open the file.
3. In your project file, use the function **Manage** → **Transfer project standards** and in the window that opens, select the **CURTAIN SYSTEM TYPES**, **CURTAIN WALL TYPES** and **SLOPED GLAZING TYPES** categories, and import.

Transfer project standards



You can now use the product to create walls, sloped and curved roofs by extrusion and curtain systems by mass faces. For the correct use of dott.Gallina roof, please draw the sloping roof from top to bottom.

Curtain systems





Now you can connect our database with your project: search and insert the best building and design products, use and manage them through my library and keep them updated through automatic notifications directly from Revit.

<https://bim.archiproducts.com/en/revit-plugin-in>

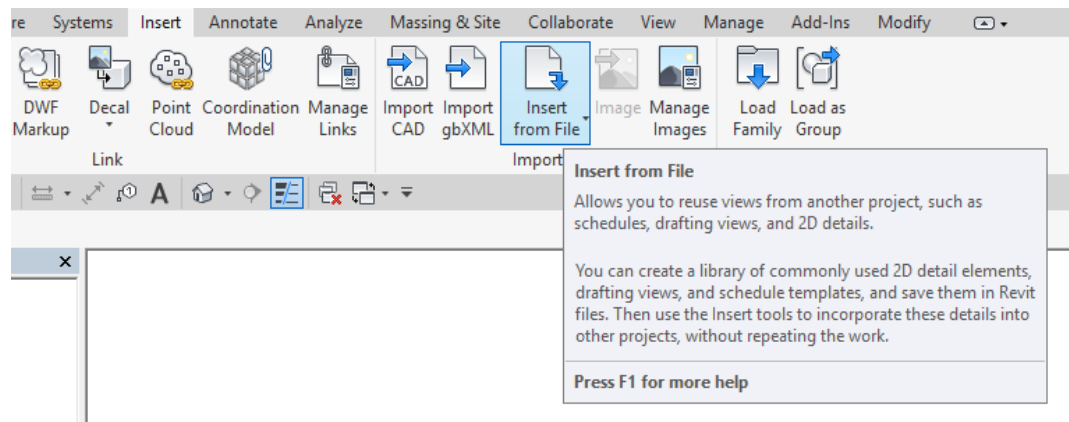
Schedule entry

In addition to the object file, the company's information sheet (schedule) is provided.

The information sheet contains information in .rvt format about the products, including the identity, dimensional and technical parameters, which can be used to calculate the quantities and verify the product's physical and performance features.

When using the BIM content, designers and manufacturers can calculate product quantities to be used in their projects, manage the quantities to be ordered and share the product information to those carrying out the work.

Load schedules



HOW to TRANSFER DETAIL ITEMS (COMPONENTS)

Curtain systems are very complex families in REVIT, so, it's been provided all the “detail item” families to complete your work and draw more specific details in “detailed drafting views” or “callout” views, with different scales (1:5, 1:2).

In the .rvt files you will find out some examples, some views that show how it could work. There are two drafting views in each BIM files (.rvt).

DETAILED VIEW – CAD (containing the CAD file)

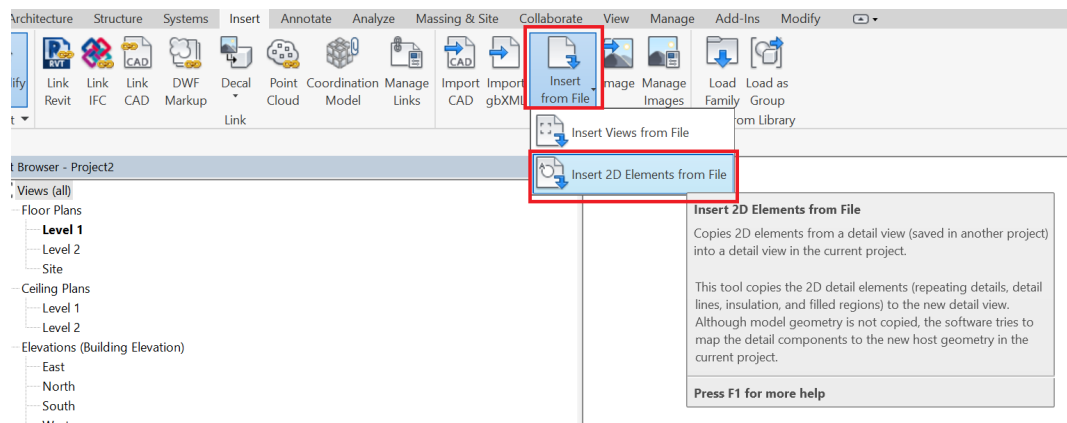
DETAILED VIEW – DETAIL ITEMS (containing the DETAIL COMPONENT FAMILIES)

One approach which may help would to keep all of your detail components in one Revit Project Drafting View in a second project file.

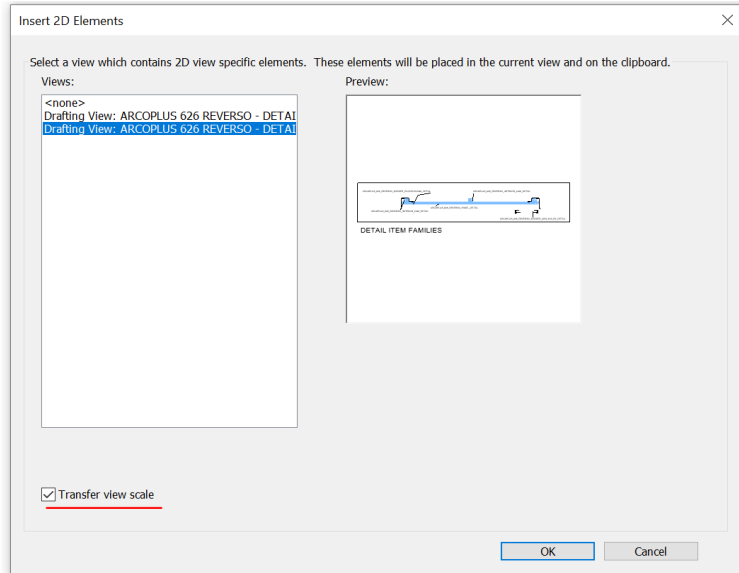
Then in the project you wish to transfer them into, navigate to:

Insert > Insert from File > Insert 2D Elements from File > Browse to the Revit project containing the detail components placed in the drafting view > Choose Drafting View > OK.

TRANSFER DETAIL COMPONENTS

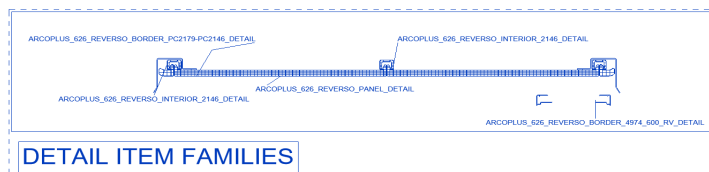
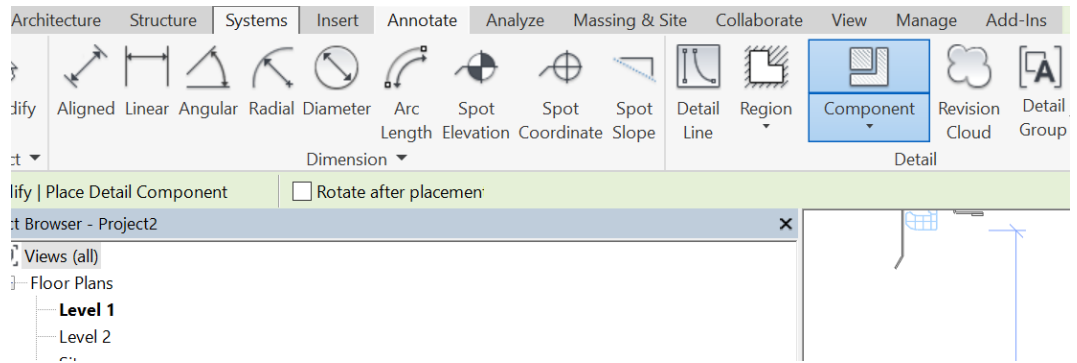


TRANSFER DETAIL COMPONENTS



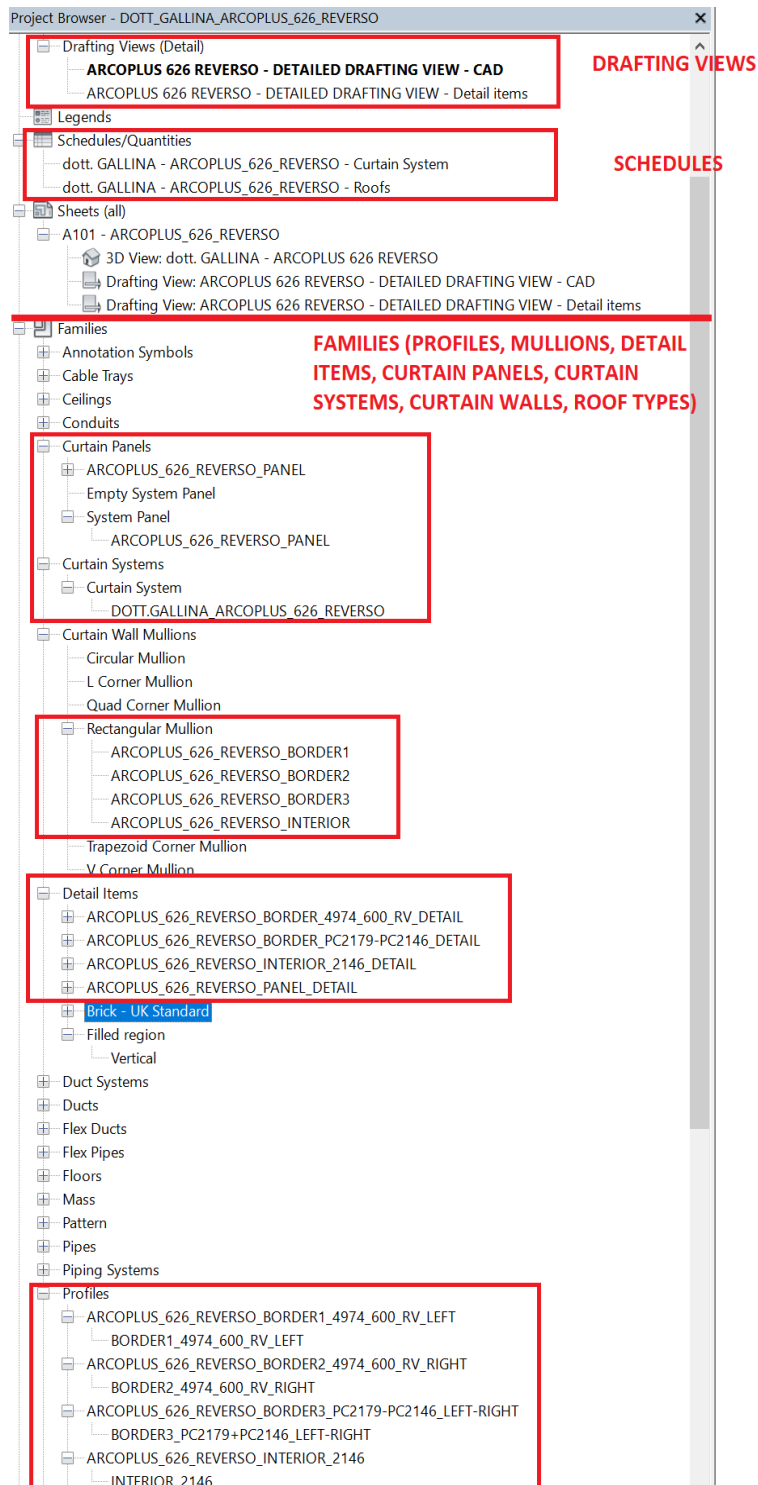
Now, all the detail component families are loaded in your project and you can eventually use them to compose your personal details going to Annotate > Detail group > Component and choose in the properties' palette the right DOTT.GALLINA detail you need!

Positioning Detail components

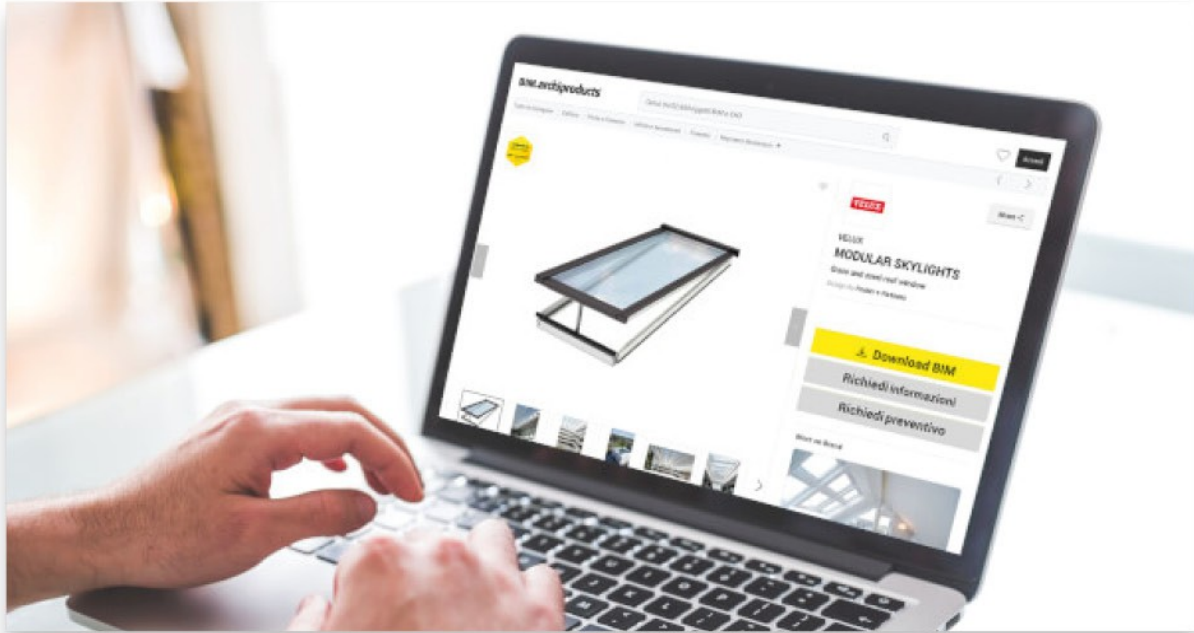


In the end, in the project browser you can manage all the loaded families and save as each of them in separated files, if you wish (such as the detail components).

Project Browser



BIM.archiproducts®



Browse and download BIM files for top products
Search for a product, filter by file format
or choose a category

DOWNLOAD BIMS NOW



BIM.ARCHIPRODUCTS CERTIFICATION

All objects made by our team are recognizable thanks to the "Certified by BIM.archiproducts" badge.

Write us at a infobim@bimarchiproducts.com
or call at +39 080-2460421



bim.archiproducts.com

THE ARCHITECTURE
& DESIGN NETWORK

—
archipassport

edilportale® **archiportale**® **archiproducts**® BIM.archiproducts® **archilovers**® © sayduck

Archipassport | Edilportale | Archiportale | Archiproducts | BIM.archiproducts | Archilovers sono marchi registrati da Edilportale.com Spa © copyright 2018
Edilportale.com Spa | Via Loiacono, 20 - 70126 Bari, Italia - tel. +39 080 24 60 421 | fax +39 080 99 95 130