



The EGGER Decorative Collection



SOLID COLOURS



U999 PT
Black



U899 ST9
Soft Black



U961 PT
Graphite Grey



U963 ST9
Diamond Grey



W1100 ST9
Alpine White



W1100 PT
Alpine White



W1000 ST9
Premium White



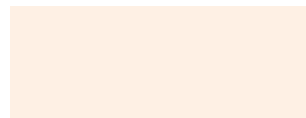
W1000 PT
Premium White



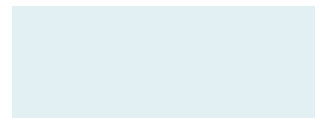
W1000 HG
Premium White



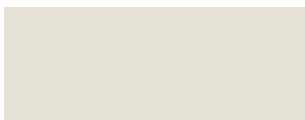
W911 ST15
Cream White



U313 ST9
Rose white



U533 ST9
Polar Blue



U775 ST9
White Grey



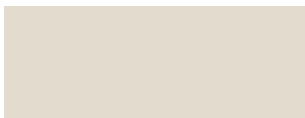
U702 ST9
Cashmere Grey



U702 PT
Cashmere Grey



U727 PT
Stone Grey



U705 ST9
Angora Grey



U708 ST9
Light Grey



U708 PT
Light Grey



U201 ST9
Pebble Grey



U363 ST9
Flamingo Pink



U232 ST9
Apricot Nude



U830 ST9
Caramel Nude



U390 ST9
Indian Red



U140 ST9
Saffron Yellow



U608 ST9
Pistachio Green



U500 ST9
Glacier Blue



U540 ST9
Denim Blue



U626 ST9
Kiwi Green



U636 ST9
Fjord Green



U646 ST9
Niagara Green



U660 ST9
Amazon Green



U732 PT
Dust Grey



U780 ST9
Monument Grey



U504 ST9
Tyrolean Blue



U599 PT
Indigo Blue

WOODGRAINS



H3335 ST28
White Gladstone Oak



H1733 ST9
Mainau Birch



H1710 ST10
Sand Kentucky Chestnut



H3157 ST12
Vicenza Oak



H3170 ST12
Natural Kendal Oak



H3303 ST10
Natural Hamilton Oak



H3330 ST36
Natural Anthon Oak



H1180 ST37
Natural Halifax Oak



H1212 ST33
Brown Tossini Elm



H1181 ST37
Tobacco Halifax Oak



H1344 ST32
Cognac Brown Sherman Oak



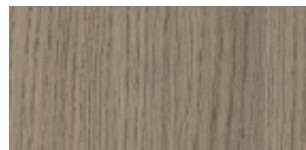
H3176 ST37
Pewter Halifax Oak



H1176 ST37
White Halifax Oak



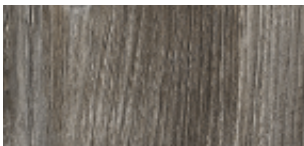
H1345 ST32
Grey Sherman Oak



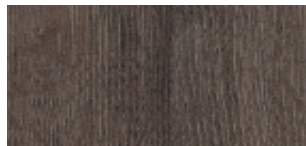
H3158 ST19
Grey Vicenza Oak



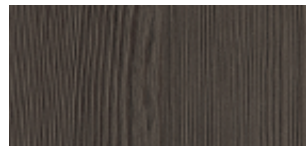
H3710 ST12
Natural Carini Walnut



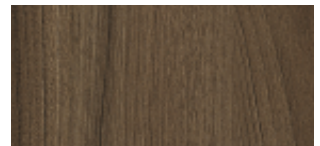
H1486 ST36
Pasadena Pine



H1346 ST32
Anthracite Sherman Oak



H3406 ST38
Anthracite Mountain Larch



H3702 ST10
Tobacco Pacific Walnut



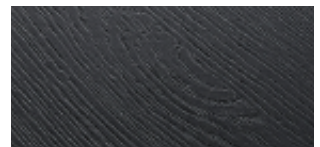
H1137 ST12
Black-Brown Sorano Oak



U999 ST19
Black



U999 ST12
Black



U999 TM28
Black



W1000 ST19
Premium White

Download the **EGGER**
Specification Handbook



MATERIALS



F416 ST10
Beige Textile



F417 ST10
Grey Textile



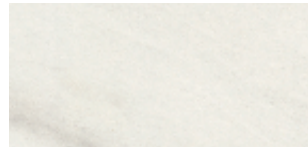
F637 ST16
White Chromix



F638 ST16
Chromix Silver



F041 ST15
White Sonora Stone



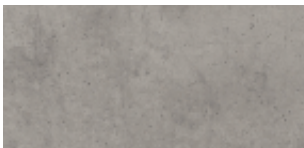
F812 ST9
White Levanto Marble



F204 ST9
White Carrara Marble



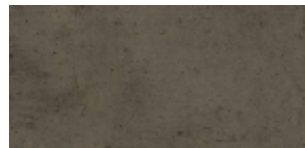
F093 ST15
Grey Cipollino Marble



F186 ST9
Light Grey Chicago Concrete



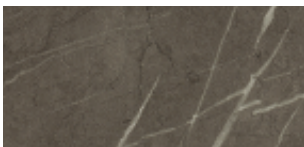
F274 ST9
Light Concrete



F187 ST9
Dark Grey Chicago Concrete



F121 ST87
Anthracite Metal Rock



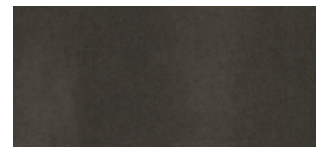
F205 ST9
Anthracite Pietra Grigia



F206 PT
Black Pietra Grigia



F242 ST10
Anthracite Jura Slate



F627 PT
Dark Steel



F628 ST16
Silver Grey Metal Slate

Download the Australian
EGGER Stock Programme



SOLID COLOURS		Laminate	18mm Panels	25mm Panels	Worktops	Flammex	Eurolight	Compact
W1100 ST9	Alpine White	•	•	•				•#
W1100 PT	Alpine White (PerfectSense Matt)	•	•	•				
U660 ST9	Amazon Green	•	•					
U705 ST9	Angora Grey	•	•					
U232 ST9	Apricot Nude	•	•					
U999 PT	Black (PerfectSense Matt)	•	•	•				
U830 ST9	Caramel Nude	•	•					
U702 ST9	Cashmere Grey	•	•					
U702 PT	Cashmere Grey (PerfectSense Matt)	•	•					
W911 ST15	Cream White	•	•					
U540 ST9	Denim Blue	•	•					
U963 ST9	Diamond Grey	•	•	•				•
U732 PT	Dust Grey (PerfectSense Matt)	•	•					
U636 ST9	Fjord Green	•	•					
U363 ST9	Flamingo Pink	•	•					
U500 ST9	Glacier Blue	•	•					
U961 PT	Graphite Grey (PerfectSense Matt)	•	•					
U390 ST9	Indian Red	•	•					
U599 PT	Indigo Blue (PerfectSense Matt)	•	•					
U626 ST9	Kiwi Green	•	•					
U708 ST9	Light Grey	•	•	•				
U708 PT	Light Grey (PerfectSense Matt)	•	•					
U780 ST9	Monument Grey	•	•					
U646 ST9	Niagara Green	•	•					
U201 ST9	Pebble Grey	•	•					
U608 ST9	Pistachio Green	•	•					
U533 ST9	Polar Blue	•	•					
W1000 ST9	Premium White	•	•	•	•	•	•	•
W1000 PT	Premium White (PerfectSense Matt)	•	•					
W1000 HG	Premium White (PerfectSense Gloss)	•	•					
U313 ST9	Rose White	•	•					
U140 ST9	Saffron Yellow	•	•					
U899 ST9	Soft Black	•	•	•				
U727 PT	Stone Grey (PerfectSense Matt)	•	•					
U504 ST9	Tyrolean Blue	•	•					
U775 ST9	White Grey	•	•	•				•

denotes Solid White Core Compact

WOODGRAINS		Laminate	18mm Panels	25mm Panels	Worktops	Flammex	Eurolight	Compact
H3406 ST38	Anthracite Mountain Larch (Feelwood)	•	•					
H1346 ST32	Anthracite Sherman Oak (Feelwood)	•	•				•	
U999 ST12	Black	•	•					
U999 ST19	Black	•	•			•	•	
U999 TM28	Black (Feelwood & PerfectSense Matt)	•	•					
H1137 ST12	Black-Brown Sorano Oak	•	•					
H1212 ST33	Brown Tossini Elm (Feelwood)	•	•					
H1344 ST32	Cognac Brown Sherman Oak (Feelwood)	•	•		•			
H1345 ST32	Grey Sherman Oak (Feelwood)	•	•				•	
H3158 ST19	Grey Vicenza Oak	•	•	•				
H1733 ST9	Mainau Birch	•	•	•		•	•	
H3330 ST36	Natural Anthor Oak	•	•		•			
H3710 ST12	Natural Carini Walnut	•	•	•				
H1180 ST37	Natural Halifax Oak (Feelwood)	•	•	•	•	•	•	•
H3303 ST10	Natural Hamilton Oak	•	•					
H3170 ST12	Natural Kendal Oak	•	•	•				
H1486 ST36	Pasadena Pine	•	•		•			
H3176 ST37	Pewter Halifax Oak (Feelwood)	•	•					
W1000 ST19	Premium White	•	•					
H1710 ST10	Sand Kentucky Chestnut	•	•	•				
H1181 ST37	Tobacco Halifax Oak (Feelwood)	•	•		•	•	•	•
H3702 ST10	Tobacco Pacific Walnut	•	•					
H3157 ST12	Vicenza Oak	•	•	•		•	•	•
H3335 ST28	White Gladstone Oak (Feelwood)	•	•					
H1176 ST37	White Halifax Oak (Feelwood)	•	•		•	•	•	

MATERIALS		Laminate	18mm Panels	25mm Panels	Worktops	Flammex	Eurolight	Compact
F242 ST10	Anthracite Jura Slate	•						•
F121 ST87	Anthracite Metal Rock	•						
F205 ST9	Anthracite Pietra Grigia	•						
F206 PT	Black Pietra Grigia (PerfectSense Matt)	•						
F416 ST10	Beige Textile	•	•					
F638 ST16	Chromix Silver	•						
F187 ST9	Dark Grey Chicago Concrete	•			•			
F627 PT	Dark Steel (PerfectSense Matt)	•						
F093 ST15	Grey Cipollino Marble	•			•			
F417 ST10	Grey Textile	•	•					
F274 ST9	Light Concrete	•						
F186 ST9	Light Grey Chicago Concrete	•	•	•	•			
F628 ST16	Silver Grey Metal Slate	•						
F204 ST9	White Carrara Marble	•			•		•	•
F637 ST16	White Chromix	•						
F812 ST9	White Levanto Marble	•						
F041 ST15	White Sonora Stone	•			•			

Matching ABS Edging available for all colours.

EGGER Collection Specifications

EGGER panel sizes* are larger than the Australian standard size to maximise cutting efficiency, reduce waste and enable smarter design.

*Applies to Panels, Eurolight, Compact Laminates & Flammex

Laminate

3650 x 1310 x 0.8mm
Solid Colour, Material, PerfectSense, Woodgrain

2790 x 2060 x 0.8mm
Feelwood range

Eurodekor® MF panels

2800 x 2070 x 18mm
2800 x 2070 x 25mm
Available on HMR P/Board Super E0 (or for PerfectSense range on MR MDF E0)

Eurolight® MFC panels

2800 x 2070 x 38mm
Raw

2800 x 2070 x 50mm
Raw and Décor

Worktops

3650 x 600 x 38mm
Single Long Edge

3650 x 920 x 38mm
Double Long Edges

Compact Laminates

2790 x 2060 x 13mm

Flammex panels

2800 x 2070 x 18mm
Fire Retardant

Contact ForestOne



1300 088 066
www.forest.one
enquiries@forest.one

For larger décor swatches, samples, and additional options visit www.forest.one

Last year EGGER wood-products locked away 5.3 million tonnes of CO₂*

This stored carbon is equal to the emissions of 3.2 million people!† That's why we recommend EGGER Laminates & Panels for truly sustainable interior design.

*Determined from the greenhouse potential of selected EGGER EPDs (GWP 100 in kg CO₂ equivalent, cradle to gate) 2015/2016
†Source: EUROSTAT 2012, "Carbon dioxide emissions from final use of products"

NEW PRODUCT

EGGER Mainau Birch (Panels)

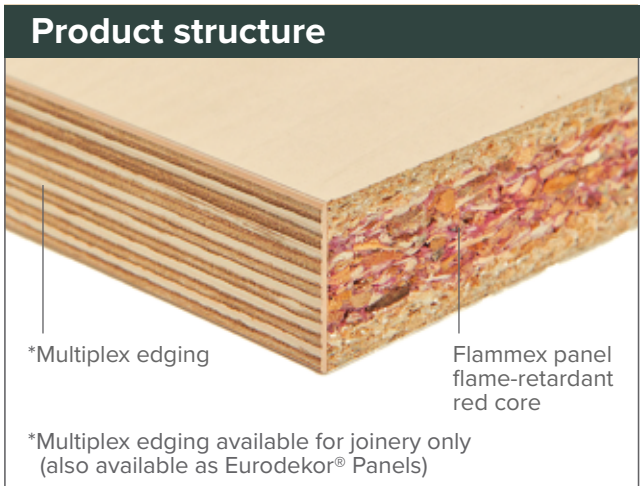
Plywood alternative



Cost-effective & natural looking alternative to Birch plywood



EGGER Mainau Birch H1733 ST9



*Multiplex edging

Flammex panel flame-retardant red core

*Multiplex edging available for joinery only (also available as Eurodekor® Panels)

Design advantages	
✓	Matching laminate for a seamless finish
✓	Available in extra-large sheets for better design & optimisation
✓	Anti-bacterial properties (ISO 22196) as standard
✓	Stable panels that won't cup / bow – perfectly suited for joinery doors
✓	Consistency in colour between sheets
✓	High quality 'defect free' face & back

Fabrication advantages	
💰	Large sheets enable greater optimisation less wastage – saving time & money
✂️	Easy to work with – simply cut, edge & install!

Commercial benefits	
✓	Cost effective alternative to veneers & plywood
✓	Pre-finished MFC – no coating required

Sheet Sizes	
Eurodekor® Panels – 2800 x 2070 x mm	
• 12 mm	– standard E0 particleboard (walls & ceilings)
• 18mm	– suitable for joinery
• 25mm	– for thicker installations (desks / shelves / workstations)
Flammex – 2800 x 2070 x 18mm	
• Wall lining & joinery	(Group 1 Fire-rated panels)
Eurolight – 2800 x 2070 x 50mm (lightweight panels)	
Laminate – 3650 x 1310 x 0.8mm (postformable)	

NEW PRODUCT

EGGER PerfectSense® (Panels)

Now available with Feelwood



Innovative combination of anti-trace matt finish & woodgrain texture



EGGER Black U999 TM28



EGGER Black U999 TM28

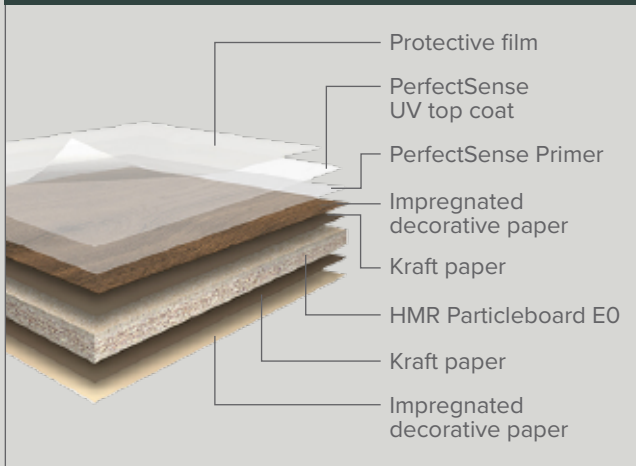
Design advantages

- ✓ Authentic look & feel of a black woodgrain texture with anti-fingerprint properties
- ✓ Low gloss level to reflect natural yet hyper-realistic play of colours & tones
- ✓ Extra-large sheets for greater design flexibility & freedom
- ✓ Anti-fingerprint & anti-bacterial properties (ISO 22196)

Sustainability & lifestyle benefits

- ✓ Negative carbon footprint of -13.8kg CO₂/m²
- ✓ 87% of material made from renewable resources
- ✓ 65% recycled content
 - 23% post-consumer
 - 42% post-industrial
- ✓ Easy to clean – suitable for vertical & low-use horizontal applications
- ✓ E0 Particleboard

Product structure



Fabrication advantages

- ✓ Easy to work with – simply cut, edge & install!
- ✓ Protective static film applied to protect the surface through the manufacturing process
- ✓ Easy to remove protective film

Sheet Sizes

Eurodekor® Panels – HMR Particleboard E0
– 2800 x 2070 x 18mm

INNOVATION

EGGER Feelwood 3D textured woodgrain



Hyper-realistic wood reproduction that feels true to the touch




Design advantages	
	10 décors replicating the look & feel of veneer/solid wood
	Available in selected EGGER product range that matches perfectly
	Anti-bacterial properties (ISO 22196) as standard
	Large sheet size alleviates unnecessary joints

Commercial benefits	
	Cost effective alternative to timber & veneers with hyper-realistic natural wood reproduction technology

Product applications	
<ul style="list-style-type: none">• Furniture / interior design• Worktops / benchtops• Doors / walls• Kitchens / bathrooms• Desks	

Sustainability & lifestyle benefits	
	Negative carbon footprint for all Feelwood panels (-13.8kg CO ₂ /m ²)
	65% recycled content <ul style="list-style-type: none">• 23% post-consumer• 42% post-industrial
	Materials from renewable resources – 87% for panels; 60% for laminates (including compact)
	No coating or finishing required
	Super E0 & no VOCs

Fabrication advantages	
	Easy to work with – just cut & edge!
	Large sheets enable greater optimisation less wastage – saving time & money



Scan for more
Eco-Facts about EGGER
Feelwood

INNOVATION

EGGER PerfectSense® Anti-fingerprint technology



Impressive matt surfaces that are easy to clean & leave no trace



Design advantages

- ✓ Beautiful velvety feel with anti-fingerprint matt finish technology
- ✓ Available in laminate & panels with matching edging for a harmonious finish
- ✓ **PerfectSense Matt** – 11 décors (horizontal & vertical applications)
 - Anti-bacterial properties (ISO 22196) as standard
 - < 3 Gloss Point
- ✓ **PerfectSense Gloss** – Super high gloss in Premium White (vertical application only)
 - 92 Gloss points

Sustainability & lifestyle benefits

- CO₂ ✓ Leading negative carbon footprint for all PerfectSense panels of -10.2kg CO₂/m²

Product range	EGGER	Brand #1	Brand #2
PerfectSense MDF MR	-10.2	-4.4	-3.55*

*based on industry EPD averages from Wood Solutions website

- ♻️ 74% post-industrial recycled content
- 🌲 E0 Materials from renewable resources – 87% for panels; 60% for laminates (including compact)
- 🚫 No coating or finishing required
- 🌬️ E0 & low VOCs

Commercial benefits

- ✓ Anti-fingerprint property to minimize cleaning (matt only)
- ✓ Chemical resistance as standard (matt laminate & panels only)
- ✓ Gloss is micro scratch resistant

Fabrication advantages

- ✂️ Easy to work with – just cut & edge!
- 🛡️ Protective foil using static technology (no messy glue residue)
- 📏 Large sheets enable greater optimisation & less wastage

Product applications

- Worktop counters (laminate recommended)
- Shelves
- Panels
- Doors / wall linings
- Desks

Scan for more Eco-Facts about EGGER PerfectSense®

EGGER Laminate For Designers



Design interior surfaces with maximum looks and minimum carbon

Select from a laminate range of 76 sustainable décors and design with the aesthetics of natural timber, concrete, stone or striking solid colours!



**EGGER Pewter Halifax Oak
H3176 ST37**

The Halifax Oak series displays striking distressing with knots, deep cracks and grain patterns to recreate a natural, authentic look in living spaces.



Design advantages

- ✓ A wide range of the latest European design trends
- ✓ Design for horizontal, vertical & curved applications (selected décors)
- ✓ Décors available in matching panels & edging (for more cohesive design)
- ✓ Laminate available in an XL sheet size, which enables more efficient design & fabrication (selected décors)
- ✓ 76 décors available nationally with a further 200 special items from Europe (conditions apply)

Product applications

- Worktops / benchtops / desk-tops
- Doors (heavy-duty / high-impact use)
- Panels
- Walls / interior cladding
- Curved surfaces
- Furniture / interior design

Sustainability & lifestyle benefits

Australia's most sustainable laminate with an impressively low carbon footprint of just 2.03kg CO₂/m²

Laminate - EGGER vs the leading Australian brands

Manufacturer	EGGER	Brand #1	Brand #2	Brand #3
kg CO ₂ /m ²	2.03	4.17	3.66	5.29

Competitors CO₂ information sourced from publicly available reporting

- 60% of materials made from renewable resources
- Anti-bacterial properties (ISO 22196) as standard (Excludes PerfectSense Gloss)
- Available with high level scratch resistance & chemical resistance (selected décors)
 - Marine Certified – Interiors
 - Food Safe Certified
- Low VOC – Blue Angel Certified

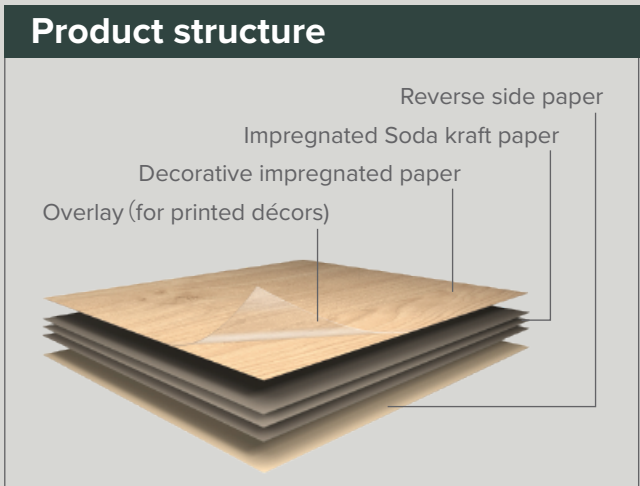


Scan for more
Eco-Facts about
EGGER Laminate

EGGER Laminate For Trades



Save time & margin with an integrated suite of decorative finishes



Commercial benefits

- ✓ Perfect colour & surface texture match to other EGGER decorative ranges for a professional & cohesive finish
- ✓ Cost-effective alternative to other decorative surface materials – no coating needed to replicate timber/veneer texture

Fabrication advantages

- 📄💰 Saves time & money – 13 décors also available as **prefinished worktops** to match laminates perfectly
- ⊖6mm Solid colours, materials & standard woodgrains all **postformable*** down to a 6mm radius for a clean and crisp appearance

*excludes PerfectSense & Feelwood ranges

Range & supply options

Looking for more?

- Choose amongst 280+ colours & textures in the extended international range.
- High-speed delivery options available!

280+ colours & textures

High-speed delivery

Sheet size advantages

3650 x 1310mm – Regular sheet size:

- Solids, Patterns, Woodgrains & PerfectSense
 - Consistent sheet sizes
 - Easy to process & work with

2790 x 2060mm – XL sheet size:

- Feelwood décors
 - For larger applications
 - Optimisation purposes to reduce the number of joins

EGGER Compact Laminate For Designers



Compact Laminate with outstanding design & durability characteristics

Select from a range of 9 sustainable décors & design with the aesthetics of natural timber, concrete, stone or striking solid colours!



**EGGER Lime Green
U630 ST9 (EU range)**

Lime Green has a strong presence and is a basic colour thanks to its purity. The combination of a pure white supports its luminosity.



Design advantages

- ✓ Suitable for horizontal & vertical applications
- ✓ Large EGGER sheet sizes for better optimisation – less joins for partitions especially for disabled & unisex toilets
- ✓ Available in 9 décors that perfectly match EGGER panels & edging for a consistent look
- ✓ Perfect for interior design applications with high-stress exposure & high demands for hygiene/cleanliness
- ✓ White core available for clean & dynamic appearance

Product applications

- Toilet partitioning
- Wall claddings
- Cabin / wall partition construction
- Tabletops / worktops
- Heavy-duty interior design (commercial projects)
- Furniture
- Lockers

Sustainability & lifestyle benefits

- 🌳 60% of materials made from renewable resources
- 🚫 Low VOC emissions
- 🛡️ Chemical resistance (SEFA 3) as a standard & Food Safe certified
- 🛡️ Highly durable finish & moisture-resistant
- 🌟 Hygienic and easy to maintain
- 🚫 Anti-bacterial properties (ISO 22196) as standard on all surface textures



Scan for more
Eco-Facts about EGGER
Compact Laminate

EGGER Compact Laminate For Trades



Perfectly matched across the EGGER product range for a cohesive fit 'n finish



Product structure

Phenol resin impregnated soda kraft paper (or melamine resin impregnated core layers with coloured core compact laminate)

Melamine resin impregnated decorative paper

Overlay (for wood and material reproductions)

Commercial benefits

- ✓ Identical finishes across selected EGGER products for consistent aesthetics
- ✓ Indestructible due to multi-layered composition perfect for heavy-duty & wet areas

Fabrication advantages

- 🏷️ Saves time & money – large sheets enable greater optimisation & less wastage
- 🔪 No need to apply edging & no other preparation required – just cut, polish edges (if required) & install



Sheet size advantages

2790 x 2060 x 13mm

The **standard unisex toilet** requires a 2700mm ceiling height.

- The **2790mm** sheet height enables floor to ceiling coverage with no joineries
- The **2060mm** sheet width enables full depth up to 1800mm

Available in:

- 8 black core / 1 white core décors
- Other décors available (lead times & MOQ's apply)

EGGER Flammex For Designers



Design a stylish fire resistant space with beautiful Flammex fire rated panels

Select from a range of sustainable décors & design with the aesthetics of natural timber, concrete, stone or striking solid colours!



**EGGER Mainau Birch
H1733 ST9**

Mainau Birch is a natural and classic light woodgrain. The very flat grain and uniform colour can make large surfaces look warm but neutral.



Design advantages

- ✓ Suitable for wall linings, ceiling panels or joinery where Group 1 fire rating is required
- ✓ Pre-finished Melamine Faced Chipboards replicating the look & feel of wood reproductions
- ✓ Matches other finishes perfectly in other applications where Group rating is not required
- ✓ 8 décors available for immediate delivery; 200+ décors available for long-term projects (lead times and MOQ's apply)

Product applications

- Wall claddings
- Ceiling linings
- Grid system ceiling tiles
- Furniture in areas where Group 1 is required (i.e., exit areas in public buildings)
- Commercial projects that require higher building code standards for fire protection (Group 1 fire rating)

Sustainability & lifestyle benefits

- ♻️ Negative carbon footprint (-13.3kg CO₂/m²)
- 🌳 87% of material made from renewable resources
- ♻️ 65% recycled content
 - 23% post-consumer
 - 42% post-industrial
- 🏆 Testing as per NCC requirements of 2019 (in accordance with AS 5637.1-2015)
- 🧼 Anti-bacterial properties (ISO 22196) are standard inclusions
- 🔥 Group 1 Fire Rating panels without design limits – also covers Group 2 requirements (AS 5637.1)



**Scan for more
Eco-Facts about
EGGER Flammex**

EGGER Flammex For Trades



Certified with Australian Standard Group 1 & Group 2 Fire Ratings



EGGER Wenge H1555 ST15 (EU range)



Commercial benefits

- ✓ Cost effective option compared to other available Group 1 options in the market
- ✓ Easy to work with (normal particleboard substrate)

Fabrication advantages

- ✓ Saves time & money – large sheets enable greater optimisation & less wastage
- ✓ Easy to work with – just cut & install!

Sheet size benefits

EGGER panels are available in larger than standard sizes:

AUSTRALIAN STANDARD
2.4 x 1.2m

EGGER XL
2.8 x 2.07m

Larger sheet sizes can reduce waste by maximising cutting efficiency

Sheet size advantages

2800 x 2070 x 18mm
– Available in EGGER Eurodekor® (Panels)

- 8 stocked décors ready for immediate delivery

ForestOne can cut sheet sizes to suit your needs! Ask your rep to find out more.

EGGER GreenTec Flooring For Designers



The only laminate flooring in Australia without PVC, VOC'S or plasticisers

Select from a range of 7 sustainable décors with trending looks of polished concrete, parquetry & traditional timber flooring!



EGGER Dark Almington Oak EPD042

Dark Almington Oak is an elegant décor in a dark grey wooden style with striking knots.



Design advantages

- ✓ 72-hr water resistant – well-suited for wet areas
- ✓ Class 33 Wear Rating for commercial fit outs
- ✓ Can be installed as floating or direct stick – the choice is yours!
- ✓ Designed to work with under floor heating
- ✓ 0.9mm cork underlay built in for sound absorption

Product applications

- Kitchen
- Bathrooms
- Toilets
- Laundries
- Offices
- Retail
- Schools
- High-traffic areas

Sustainability & lifestyle benefits

- ☁️ Low carbon footprint of 2.52kg CO₂/m²
- 🌲 69% of material made from renewable resources
- ♻️ 55% post-industrial recycled content
- 🚫 Anti-slip – R10 / P4 slip rating with anti-static suitability (rated at <2kV)
- 🌲 Wood sourced from 100% regional forests & 100% recycled cork
- 🚫 Anti-bacterial properties (ISO 22196) as standard on all surface textures



Scan for more
Eco-Facts about EGGER
GreenTec Flooring

EGGER GreenTec Flooring For Trades



Highly durable & waterproof laminate flooring for commercial interiors



Product structure

Integrated, sound absorbing cork underlay

Hard wearing and water-resistant wear layer Authentic décor layer

Also suitable for bathroom & commercial applications

Commercial benefits

- ✓ 5-year commercial warranty
25-year residential warranty
- ✓ Available in 7 décors for immediate delivery
- ✓ A great add-on opportunity for shopfitters & commercial joiners offering a complete fit out solution

Fabrication advantages

- Built-in cork underlay (0.9mm thick) for sound insulation & comfort
- Easy installation *CLIC it!* system
- Can be installed as floating flooring or directly stuck onto substrate / base / under floor heating

Range & supply options

Looking for more?

- Choose amongst 20 colours & textures in the extended international range.
- High-speed delivery options available!

20 colours & textures

High-speed delivery

Plank size advantages

Plank width (all 7.5mm thick)

STANDARD SIZE

1292 x 193mm (available in 4 décors)

XL SIZE

1292 x 246mm (available in 3 décors)

EGGER Worktops For Designers



Elegant & sustainable worktop solutions with 66% recycled content

Select from 13 décors ranging from stone, concrete, ceramic & wood reproduction.



**EGGER Natural Halifax Oak
H1180 ST37**

The Halifax Oak series displays striking distressing with knots, deep cracks and grain to recreate a natural, authentic look in living spaces.



Design advantages

- ✓ Cost effective & fast-installation time for worktop applications in your projects
- ✓ Tight 3mm radius edge for 9 décors (similar to square-edged but with softer corners)
- ✓ Square-edge with matching ABS long-grain edge (Feelwood range)
- ✓ Décors match perfectly to selected EGGER product range for a cohesive finish
- ✓ Choose from single- or double-sided edge worktop for ease of design

Product applications

- Tables / desktops
- Shelving
- Benchtops
- Furniture
- Shopfitting
- Laboratories
- Schools
- Bathrooms
- Laundries
- Kitchens

Sustainability & lifestyle benefits

- 🌳 88% of material made from renewable resources
- ♻️ 66% recycled content
 - 25% post-consumer
 - 41% post-industrial
- 🛡️ Scratch, heat & chemical resistance
- 🌟 Resistant to stains, extremely durable & easy to clean
- 🧼 Anti-bacterial properties (ISO 22196) as standard
- 🍏 Hygienic & Food Safe certified for a peace of mind

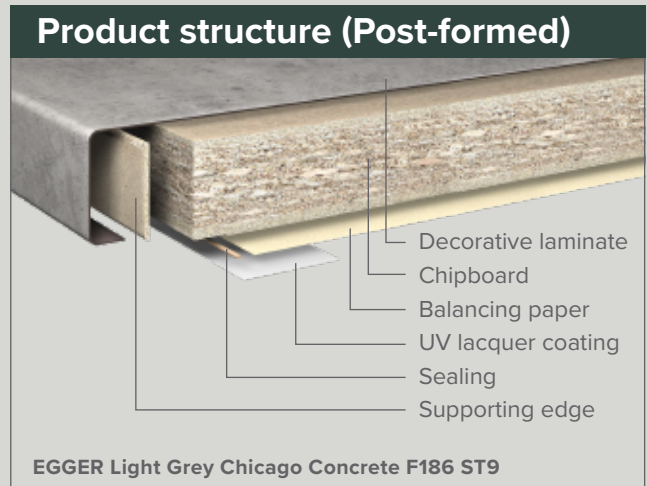
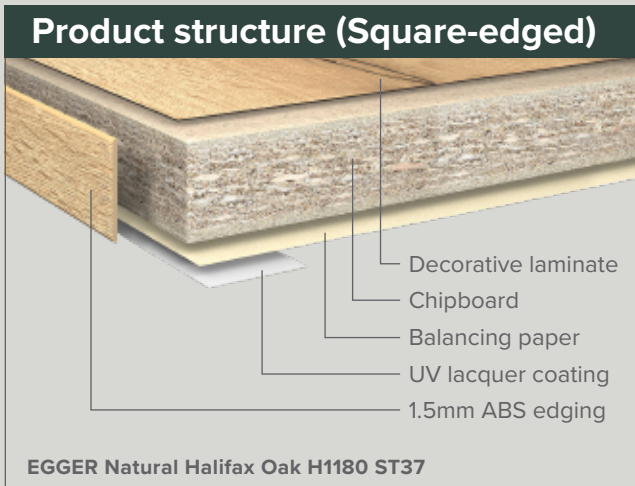


Scan for more
**Eco-Facts about
EGGER Worktops**

EGGER Worktops For Trades



Available with different edge profiles, lengths & widths to suit any install



- Commercial benefits**
- ✓ Reduced installation costs – ready to install & easy to mount
 - ✓ No need to outsource your benchtop – order from ForestOne stocked range & receive next day
 - ✓ Supporting edge to protect against knocks before, during & after installation (post-formed worktops only)
 - ✓ UV lacquer coating & balancer back

- Fabrication advantages**
- 💰 Saves time & money – just dock to length & edge
 - 3mm 3mm radius post-formed worktops with 2.4m length of edging included
 - ☒ Individually wrapped to protect each worktop
 - 3mm 3mm Drip line edge on 3mm radius option



- Worktop sizes**
- Single-Sided Worktop (front edge) – 3650 x 600 x 38mm
 - Double-Sided Worktop (front + back edge) – 3650 x 920 x 38mm
- Finishes:**
- Square-edged – Feelwood range only
 - Matching 1.5mm thick end-grain edging available for purchase in 5m lengths
 - Post-formed – other décors
 - 2.4m length of laminate edging included in packaging / ABS available for purchase

EGGER Eurodekor® (Panels) For Designers



Sustainable MFC panels available in a wide range of European décors

Wide range of selection of 60 Melamine Faced Chipboard décors with aesthetic looks of natural timber, concrete, stone or solid colours!



**EGGER Vicenza Oak
H3157 ST12**

An elegant version of a rift cut oak with a striking woodgrain structure, its subtle colour play and light grey undertones give the decor a very modern appearance.



Design advantages

- ✓ Authentic décor & texture similar to real material at a fraction of the price
- ✓ Suitable for horizontal & vertical applications
- ✓ Perfectly matching ABS edging including End-grain options for Feelwood range
- ✓ Large EGGER sheet sizes for better design options including full height panels at 2800mm
- ✓ Identical finishes across selected EGGER products for consistent aesthetics
- ✓ Durable finish, easy to clean & no maintenance required

Product applications

- Furniture / interior design
- Benchtops
- Shelves
- Wardrobes
- Wall claddings
- Ceiling linings

Sustainability & lifestyle benefits

☞ Australia's most sustainable panels with a negative carbon footprint of -13.8kg CO₂/m²

MFC Panel - EGGER vs the leading Australian brands			
Product Range	EGGER	Brand #1	Brand #2
Melamine Faced Chipboard MR*	-13.8	-1.4	-7.66*

*moisture resistant
*based on industry EPD averages from Wood Solutions website

☞ 87% of material made from renewable resources

☞ 65% recycled content

- 23% post-consumer
- 42% post-industrial

☞ High level of scratch resistance & resistance to disinfectants

☞ Panels – HMR Particleboard Super E0 PerfectSense range – MR MDF E0

☞ Compliance to REACH for chemical resistance

☞ Anti-bacterial (ISO 22196) & anti-microbial (HA 890247-Z) as standard



Scan for more Eco-Facts about EGGER Eurodekor® Melamine Faced Chipboard

EGGER Eurodekor® (Panels) For Trades



Reliable, versatile panelling for vertical & horizontal applications



EGGER Black Pietra Grigia F206 ST9 (Dining table)

Product structure

Melamine resin impregnated decorative paper
Eurospan chipboard
Melamine resin impregnated decorative paper

Commercial benefits

- ✓ Available in 60 décors that match perfectly with EGGER Laminate & ABS edging
- ✓ Ready for immediate use – no oiling, staining or other protective measures

Fabrication advantages

- 🕒💰 Saves time & money – large sheets enable greater optimisation & less waste
- ✂️ Easy to process, maintain & clean – just cut & edge!

Sheet size benefits

EGGER panels are available in larger than standard sizes:

AUSTRALIAN STANDARD
2.4 x 1.2m

EGGER XL
2.8 x 2.07m

Larger sheet sizes can reduce waste by maximising cutting efficiency

Sheet size advantages

2800 x 2070 x 18mm
– HMR Particleboard Super E0 & MR MDF E0 (PerfectSense range)

Matching ABS for décors
– Long-grain (Woodgrains)
– End-grain (Feelwood range)

ForestOne can cut sheet sizes to suit your needs! Ask your rep to find out more.

EGGER Eurolight® (Panels) For Designers



Amazing lightweight panels, which are only heavy on recycled content

Select from 10 pre-finished (front & back) melamine faced décors with matching ABS edging!



EGGER Tobacco Pacific Walnut H3702 ST10

A modern walnut responds to the trend for more naturalness, even with classic elegant wood types, through dark inclusions and soft knots.



Design advantages

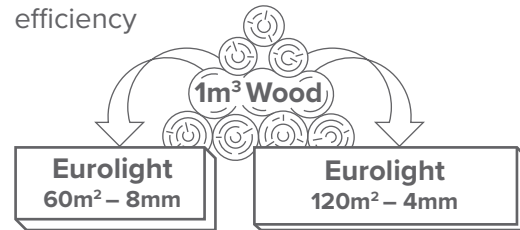
- ✓ Suitable for vertical & most horizontal applications
- ✓ Larger EGGER sheet sizes for better design options including full height panels at 2800mm
- ✓ Identical finishes across selected EGGER products for consistent aesthetics
- ✓ Wide ABS edging available to suit – 2mm thick for added durability
- ✓ Also available in 38mm & 50mm raw to enable other laminate décors to be used

Product applications

- Furniture
- Interior doors
- Sliding doors
- Operable walls
- Table / Worktops
- Wardrobes
- Shelving
- Partitioning panels
- Decorative beams
- Doors
- Caravan interior fittings
- Any application where thicker panels are required

Sustainability & lifestyle benefits

- CO₂ Negative carbon footprint (-7.86kg CO₂/m²)
- ♻️ 88% of material made from renewable resources
- ♻️ 66% recycled content
 - 43% post-consumer
 - 23% post-industrial
- ✓ Super E0 Particleboard used
- 🦠 Anti-bacterial properties (ISO 22196) as standard
- 📄 Lower wood content for resource efficiency

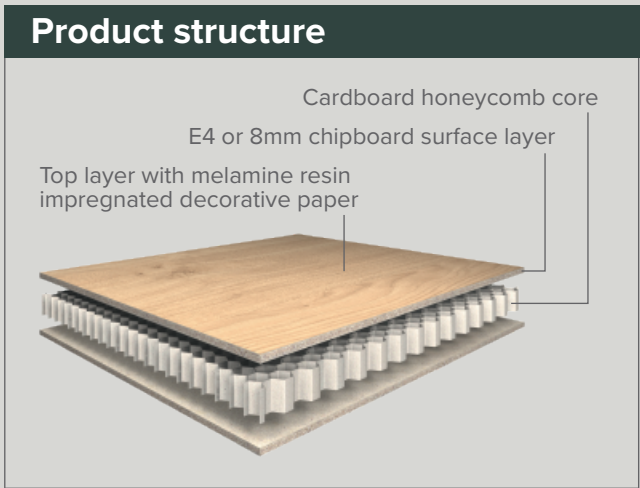


Scan for more
Eco-Facts about
EGGER Eurolight®

EGGER Eurolight® (Panels) For Trades



Robust construction with lightweight hexagonal honeycomb core



Commercial benefits

- ✓ Reduced installation costs & much easier to install than heavier panels
- ✓ Brilliant alternative to timber beams that are expensive, heavy & difficult to acquire
- ✓ Light-weight panels where thicker sheets are required – 38mm (330kg/m³) & 50mm (265kg/m³)

Fabrication advantages

- 📄 Saves time & money – large sheets enable greater optimisation & less wastage
- ✍ For any application where weight may be problematic & thicker panels are required
- ⚡ Easy installation of electronic components
- 🛠 No manufacturing required to build thickness

Sheet size benefits

EGGER panels are available in larger than standard sizes:

AUSTRALIAN STANDARD 2.4 x 1.2m	EGGER XL 2.8 x 2.07m
--	--------------------------------

Larger sheet sizes can reduce waste by maximising cutting efficiency

Sheet size advantages

2800 x 2070 x 38mm / 50mm
– Eurolight Raw

2800 x 2070 x 50mm with matching 54mm ABS
– Eurolight Décors

Matching ABS edging for all 76 décors to suit 38mm

ForestOne can cut sheet sizes to suit your needs! Ask your rep to find out more.