



Windows

As the leader in high energy-rated timber windows, we understand that our clients are as individual as their projects. As such, we provide customised solutions and superior service regardless of project size or location.

With our knowledge and experience, architects, developers and home owners can be assured of a product that is superior in many ways - one that gives design flexibility and will achieve top energy ratings. With virtually no limitations to size or shape, our windows and doors are adaptable to any wall and suitable to any style of building.

Paarhammer windows achieve excellent energy ratings with U-values from 0.8 (WERS), that's energy savings of up to 85%, and superior noise reduction of up to 45dB. In addition to superior thermal qualities, our frames also have an ultimate strength test of 2300+3300pa (N4), with the wood-Alu Range N6/C4, and water penetration of 200pa N4 (C2), giving our window systems unparalleled strength and security. Multi point metal-to-metal security hardware is standard, with automation also available.

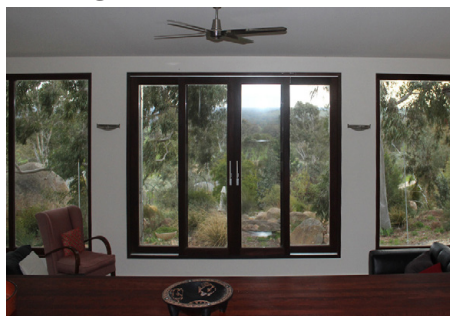
Tilt & turn



Picture - fixed



Sliding



Clerestory - tilt





Easily operated with the turn of the handle: tilt inwards at the top for child proof ventilation; turn and fully open for easy cleaning. Energy efficient and draft proof, with high sound protection, and secure locking.



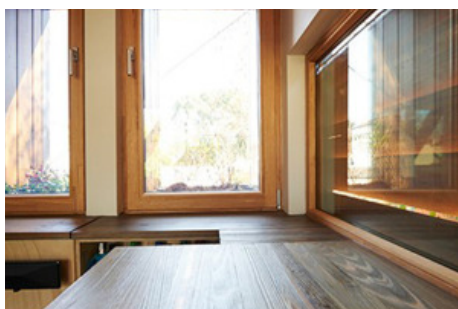
Specifications

- Timber frame thickness IV 68mm
- Pronounced joints
- Double glazed with 1x 14-20mm airgap, depending on glass thickness
- Choice of glass combinations
- Komfort+: low VOC spray-painted or stained in the colour of your choice
- Komfortline: primed and paint ready
- German tilt & turn hardware, multi-point locking, partly surface mounted
- Childproof available
- Seals to eliminate drafts
- Suited for bushfire areas up to and including BAL-29

Size:

- Minimum 600mm height x 420mm width
- Width up to 1200mm at min height of 1500mm, max 2100mm
- Height up to 2400mm at max width of 1000mm

WERS energy rating: from a very low 1.8
Ultimate strength N6/C4





Fixed panes enable you to enjoy a clear view without obstruction, acting as a picture frame for the scenery outside of the window. Often used in combination with openable windows or doors.



Specifications

- Timber frame thickness IV 68mm
- Pronounced joints
- Custom made to 2400mm height
- Double glazed with 1x 14-20mm airgap, depending on glass thickness
- Choice of glass combinations
- Komfort+: low VOC spray-painted or stained in the colour of your choice
- Komfortline: primed and paint ready
- Suited for bushfire areas up to and including BAL-29

Size:

- Width up to 4000mm
- Height up to 4000mm
- Maximum overall 11m²

WERS energy rating: from a very low 1.8





For special spaces where only a sliding window is suitable. Parallel-slide-tilt or lift-slide options are available. Highly energy efficient and draft proof with high sound protection. Custom made to size and finish.



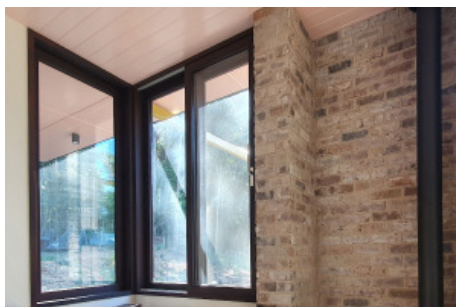
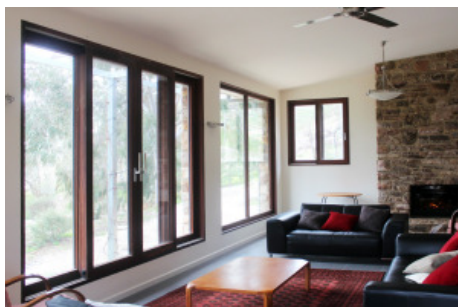
Specifications

- Victorian Ash or FSC® certified Manilkara Bidentata timber frame
- Frame thickness IV 68mm, pronounced joints
- Double glazed with 1x 14-20mm airgap, depending on glass thickness
- Choice of glass combinations
- Komfort+: low VOC spray-painted or stained in the colour of your choice
- Komfortline: primed and paint ready
- German lift-slide hardware, multi-point locking
- Seals to eliminate drafts
- Suited for bushfire areas up to and including BAL-29

Size:

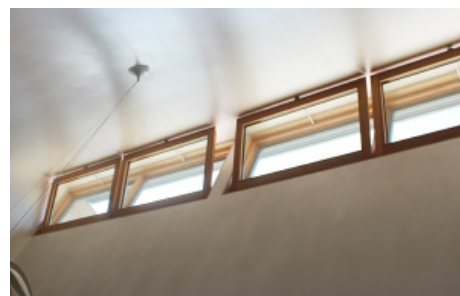
- Minimum height 750mm

WERS energy rating: from a very low 1.8





Tilting inwards at the top for ventilation, windows can be horizontal or vertical. The handle controls the mechanics and multi-point locking within the frame. Can be automated for hard to reach areas.



Specifications

- Timber frame thickness IV 68mm
- Pronounced joints
- Double glazed with 1x 14-20mm airgap, depending on glass thickness
- Choice of glass combinations
- Komfort+: low VOC spray-painted or stained in the colour of your choice
- Komfortline: primed and paint ready
- German tilt hardware fittings
- Seals and multi-point locking
- Can be automated with concealed chain drive
- Suited for bushfire areas up to and including BAL-29

Size:

- Maximum width 2400mm at maximum height of 700mm
- Height up to 2400mm at maximum width of 1500mm
- Height minimum 450mm

WERS energy rating: from a very low 1.8