

Now available online

Product Lookbook

Kingspan Insulated Panels



Contents

Insulated Roof Systems	3	Architectural Façade Systems	14	Architectural Roofing	22
KS1000RW Trapezoidal Roof Panel	4	Evolution Panelised Façade	15	KingZip Standing Seam	23
K-Clad Roof Panel	5	KS1100KP Karrier Wall Panel	16	KingZip Infiniti Standing Seam	24
JI Vulcasteel Roof Panel	6	Eurobond Rainspan Wall Panel	17	Controlled Environments & Data Centre Solutions	25
KS1100 / 1200RL Roofliner Panel	7	Dri-Design	18	KS1100 / 1200CS Coldstore Panel	26
Insulated Wall Systems	8	Shingle	19	Eurobond Firemaster Extra / Ultima Wall Panel	27
Architectural Wall Panel	9	Recess Fixed Cassette	20	Eurobond Firemaster Ceiling Panel	28
KS1000RW Trapezoidal Wall Panel	10	Hook-on Cassette	21	Fabrications	29
K-Clad Wall Panel	11			Membrane Lined Insulated Gutter	30
Eurobond Europanel Extra Wall Panel	12			Top Hats	30
Eurobond Rockspan Extra / Ultima Wall Panel	13			Roof & Wall Flashing	30
				Pre-formed Corners	30

Introduction

Kingspan Insulated Panels is a global leader in the design, development and delivery of advanced building envelopes. Offering a wide range of insulated roof and wall panels, architectural façade systems, controlled environment solutions, fabrications and standing seam roof systems. Kingspan Insulated Panels is widely recognised for bringing to life bold and thought-provoking design visions.

This book has been designed to inspire by showcasing the latest collection of Australian products, highlighting the versatility of Kingspan insulated panel systems.



An aerial photograph of a large industrial building with a blue roof and white doors. The building has a complex roof structure with several skylights and a central section with a different roof pitch. The surrounding area includes a parking lot with several cars, a road, and a wooded area in the background.

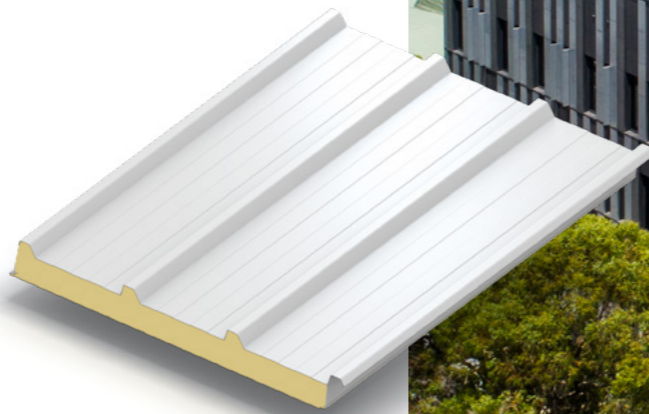
Insulated Roof Systems

- KS1000RW Trapezoidal Roof Panel
- K-Clad Roof Panel
- JI Vulcasteel Roof Panel
- KS1100 / 1200RL Roofliner Panel

KS1000RW Trapezoidal Roof Panel

KS1000RW Trapezoidal Roof Panels present a superior single component roofing solution compared to conventional multi-part site assembled systems.

They are quicker to install, require less manual labour and are designed to meet thermal building regulations compliance.



Product Highlights

- High performance polyisocyanurate (PIR) insulation core
- Maximum R-Value of 7.11 m²K/W*
- Through-fix, single component system for faster installation
- 1,000 mm cover width and standard lengths of 2 to 13.7 metres
- Pitched roof applications of 3° or more after deflection
- Factory-applied side lap weather seal
- A range of large-scale third-party testing and accreditations are available – please consult the Product Data Sheet for more information
- Core thickness: 40 – 140 mm



For more information
scan or click here

* This value is seasonally dependent and varies on which thickness is used.

K-Clad Roof Panel

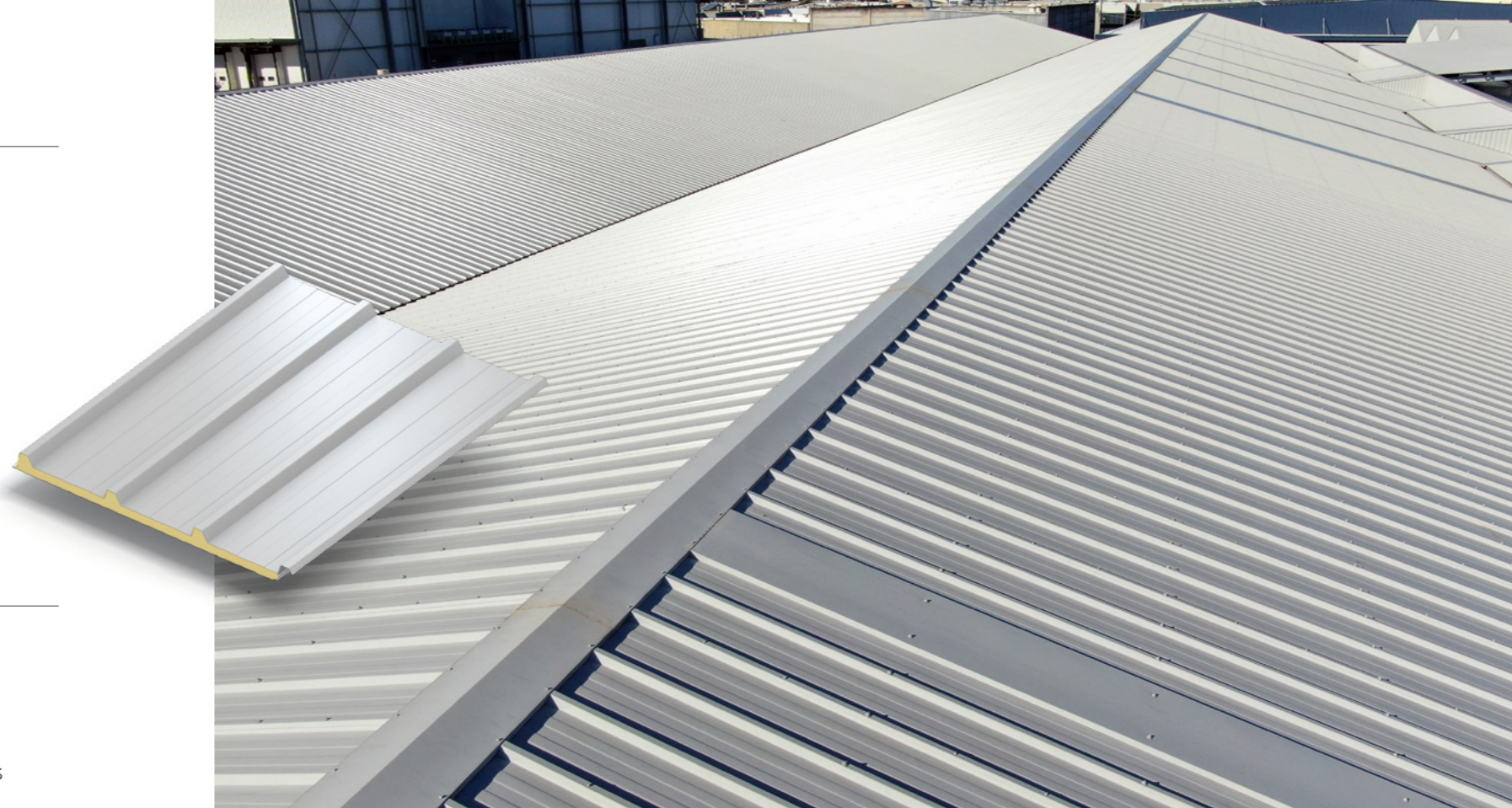
K-Clad Roof Panel is a single-component system, a viable alternative to the traditional multi-part construction methods of non-Section J buildings. K-Clad Roof Panels provide benefits in areas such as thermal comfort, condensation control, spanning capability, build speed and durability.

Product Highlights

- High performance polyisocyanurate (PIR) insulation core
- Maximum R-Value of 1.51 m²K/W*
- Through-fix, single component system for faster installation
- 1,000 mm cover width and standard lengths of 2 to 12 metres
- Pitched roof applications of 3° or more after deflection
- Ideal for non-Section J buildings such as large scale logistics facilities and temperature sensitive agricultural storage facilities
- Factory-applied side lap weather seal
- A range of large-scale third-party testing and accreditations are available – please consult the Product Data Sheet for more information
- Core thickness: 30 mm



For more information
scan or click here



* This value is seasonally dependent and varies on which thickness is used.

Jl Vulcasteel Roof Panel

The Jl Vulcasteel Roof Panel is a trapezoidal roofing solution manufactured with a high-density, non-combustible stone wool core, offering excellent acoustic performance.

Product Highlights

- High density 100kg/m³ non-combustible stone wool core
- Maximum R-Value of 4.77 m²K/W*
- Through-fix, single component system for faster installation
- 1,000 mm cover width and standard lengths of 2.5 to 11.8 metres
- Pitched roof applications of 5° or more after deflection
- All panel joints have a factory applied seal fitted on the internal joint of the side-lap to automatically seal the adjacent panels
- A range of large-scale third-party testing and accreditations are available – please consult the Product Data Sheet for more information
- Core thickness: 80 – 200 mm



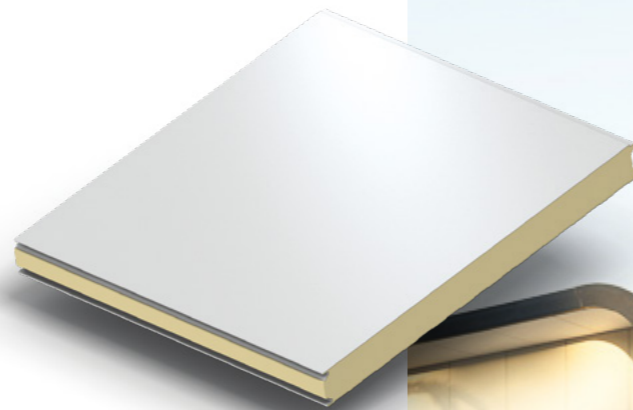
For more information
scan or click here

* This value is seasonally dependent and varies on which thickness is used.



KS1100 / KS1200RL Roofliner Panel

KS1100/1200RL Roofliner Panel is an insulated roof panel, designed to be used as an insulated composite panel substrate installed under site-applied, fully supported or self-supported aluminium, copper, zinc and stainless steel roof systems. Suitable for buildings with low pitch roofs.

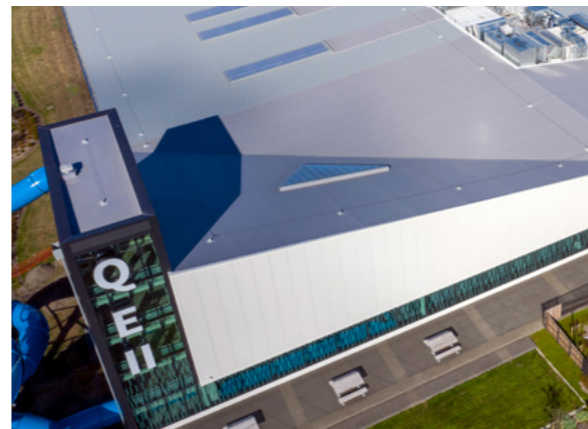


Product Highlights

- High performance polyisocyanurate (PIR) insulation core
- Maximum R-Value of 9.82 m²K/W*
- Through-fix, single component system for faster installation
- Choice of 1,100 mm and 1,200 mm cover widths and standard lengths of 2 to 13.7 metres
- Suitable for low pitch roof applications
- 'Tongue and groove' joint achieves excellent thermal performance
- A range of large-scale third-party testing and accreditations are available – please consult the Product Data Sheet for more information
- Core thickness: 50 – 200 mm



For more information
scan or click here



* This value is seasonally dependent and varies on which thickness is used.

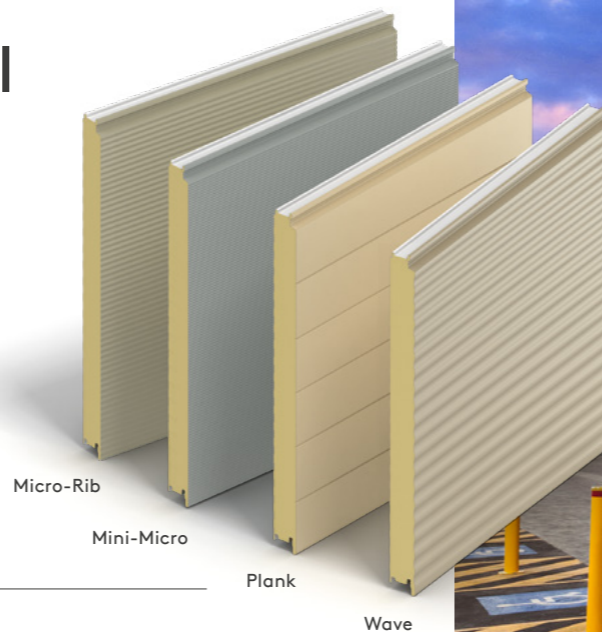
Insulated Wall Systems

- Architectural Wall Panel
- KS1000RW Trapezoidal Wall Panel
- K-Clad Wall Panel
- Eurobond Europanel Extra Wall Panel
- Eurobond Rockspan Extra /
Ultima Wall Panel

Architectural Wall Panel

The Architectural Wall Panel comprises a range of secret-fix external wall panels that combine aesthetic appeal with performance.

Available in four different profile options and a choice of cover widths, these versatile panels provide a weathertight building envelope solution.



Product Highlights

- High performance polyisocyanurate (PIR) insulation core
- Maximum R-Value of 6.92 m²K/W*
- Secret-fix, single component systems for faster installation
- Choice of 900 mm and 1,000 mm cover widths and standard lengths of 2 to 13.7 metres
- Factory-applied weather seal
- A range of large-scale third-party testing and accreditations are available – please consult the Product Data Sheet for more information
- Core thickness: 50 – 140 mm



For more information
scan or click here



* This value is seasonally dependent and varies on which thickness is used.

KS1000RW Trapezoidal Wall Panel

KS1000RW Trapezoidal Wall Panel is a through-fix, single component and versatile insulated panel solution that can be installed in both vertical and horizontal applications.

Product Highlights

- High performance polyisocyanurate (PIR) insulation core
- Maximum R-Value of 7.12 m²K/W*
- Through-fix, single component system for faster installation
- 1,000 mm cover width and standard lengths of 2 to 13.7 metres
- Factory-applied side lap weather seal
- A range of large-scale third-party testing and accreditations are available – please consult the Product Data Sheet for more information
- Core thickness: 40 – 140 mm



For more information
scan or click here



* This value is seasonally dependent and varies on which thickness is used.

K-Clad Wall Panel

K-Clad Wall Panel is a single-component system, a viable alternative to the traditional multi-part construction methods of non-Section J buildings. K-Clad Wall Panels provide benefits in areas such as thermal comfort, condensation control, spanning capability, build speed and durability.

Product Highlights

- High performance polyisocyanurate (PIR) insulation core
- Maximum R-Value of 1.52 m²K/W*
- Through-fix, single component system for faster installation
- 1,000 mm cover width and standard lengths of 2 to 12 metres
- Suitable for vertical or horizontal application
- Ideal for non-Section J buildings such as large scale logistics facilities and temperature sensitive agricultural storage facilities
- Factory-applied side lap weather seal
- A range of large-scale third-party testing and accreditations are available – please consult the Product Data Sheet for more information
- Core thickness: 30 mm



For more information
scan or click here



* This value is seasonally dependent and varies on which thickness is used.

Eurobond Europanel Extra Wall Panel

The Europanel Extra range comprises of stone wool core insulated panels, available in three distinct profiles, that deliver aesthetically appealing solutions suited to contemporary buildings.

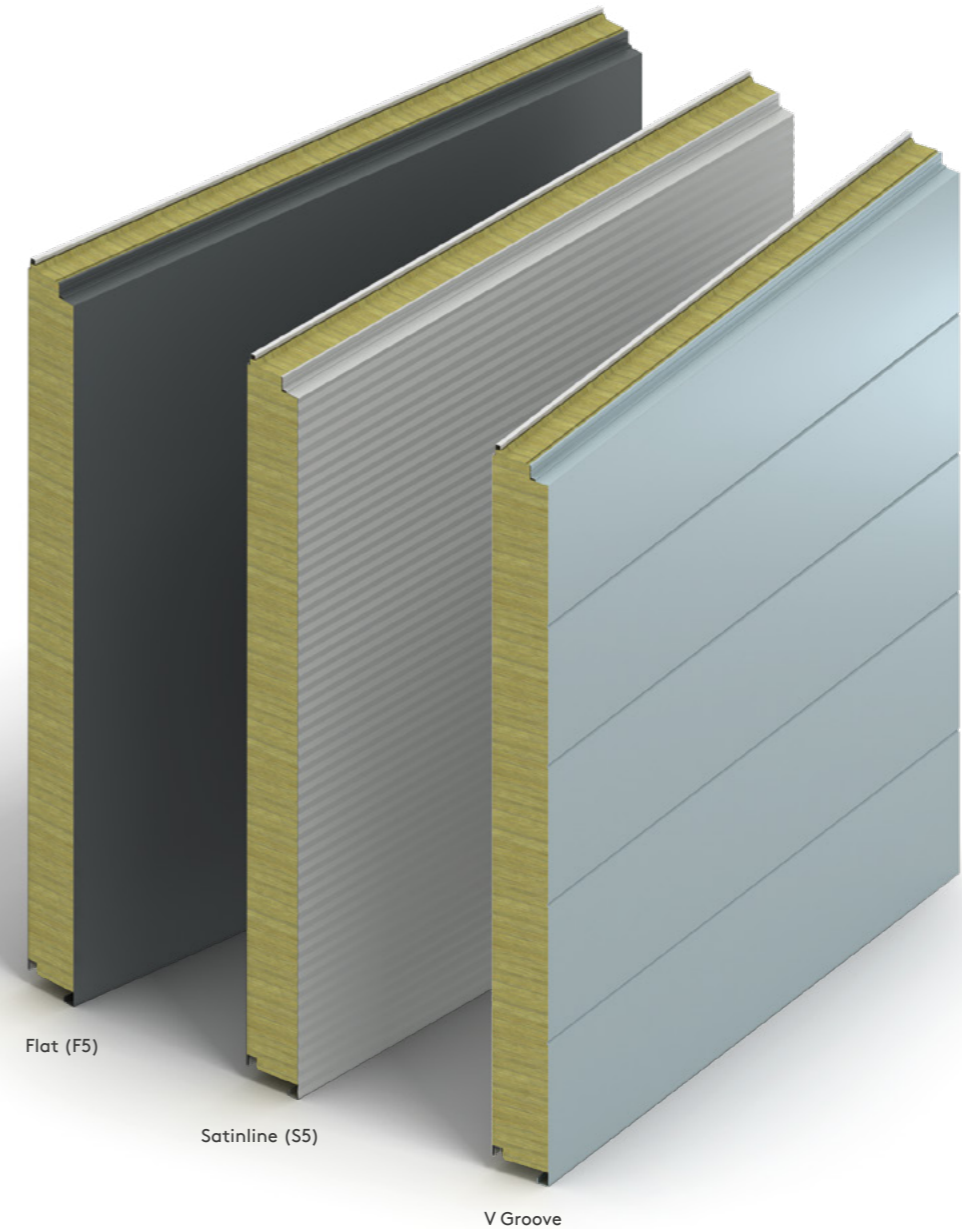
Product Highlights

- Non-combustible stone wool core
- Maximum R-Value of 6.79 m²K/W*
- Secret-fix, single component system for faster installation
- High density 115kg/m³
- 1,000 mm cover width and standard lengths of 1.8 to 11.8 metres
- Suitable for vertical or horizontal application
- A range of large-scale third-party testing and accreditations are available – please consult the Product Data Sheet for more information
- Core thickness: 75 – 300 mm



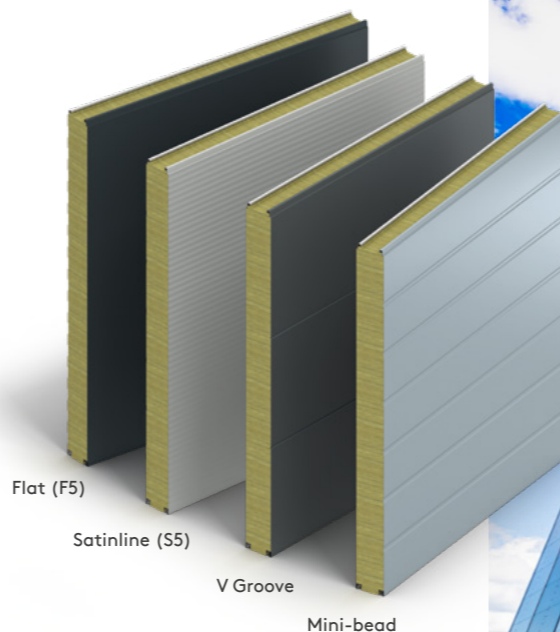
For more information
scan or click here

* This value is seasonally dependent and varies on which thickness is used.



Eurobond Rockspan Extra / Ultima Wall Panel

The Eurobond Rockspan Extra and Ultima Wall Panel ranges have stone wool cores and are cost effective wall solutions. Panels are ideally suited for application within the industrial sector.



Product Highlights

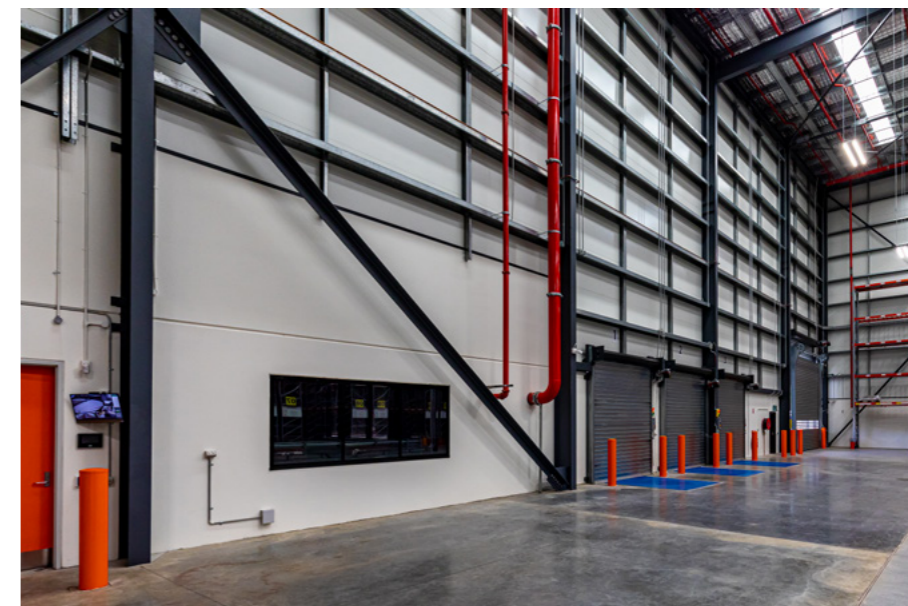
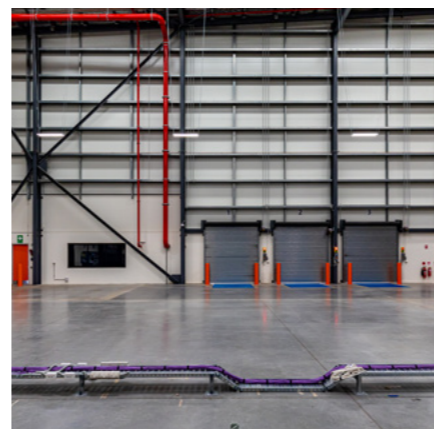
- Non-combustible stone wool core
- Maximum R-Value of 6.79 m²K/W*
- High density 115kg/m³
- Through-fix, single component system for faster installation
- 1,000 mm cover width and standard lengths of 1.8 to 11.8 metres
- Choice of four distinct profiles
- Suitable for vertical or horizontal application
- Factory-applied weather seal
- Up to 2 hours (Rockspan Extra) and 4 hours (Rockspan Ultima) fire resistance (integrity and insulation) in accordance with AS 1530.4:2014**
- A range of large-scale third-party testing and accreditations are available – please consult the Product Data Sheet for more information
- Core thickness: 75 – 300 mm



For more information
scan or click here



For more information
scan or click here



* This value is seasonally dependent and varies on which thickness is used.

** Fire resistance levels are subject to panel thickness, width, orientation, distance between supports and method of assembly. Please contact Technical Team for the specific installation detail required.

Architectural Façade Systems

- Evolution Panelised Façade
- KS1100KP Karrier Wall Panel
- Eurobond Rainspan Wall Panel
- Dri-Design
- Shingle
- Recess Fixed Cassette
- Hook-on Cassette



Evolution Panelised Façade

The ideal solution for a minimalist façade effect, Evolution Panelised Façade offers a range of visual effects in a wide selection of colours.

Evolution Panelised Façade can be laid horizontally or vertically and is available in module widths of 900 mm and 1000 mm. The system features a hidden joint detail which conceals fasteners from view.

Product Highlights

- High performance polyisocyanurate (PIR) insulation core
- Maximum R-Value of 6.92 m²K/W*
- Secret-fix, single component systems for faster installation
- Available in 1,000 mm and 900 mm cover widths and standard lengths of 2 to 7 metres
- Choice of visual effects – flat and multi-groove
- Factory-applied weather seal
- A range of large-scale third-party testing and accreditations are available – please consult the Product Data Sheet for more information
- Core thickness: 50 – 140 mm

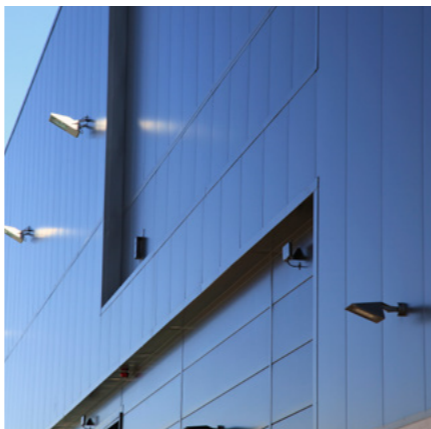


For more information
scan or click here

* This value is seasonally dependent and varies on which thickness is used.

Evolution Axis

Evolution Multi-Groove



KS1100KP Karrier Wall Panel

KS1100KP Karrier Wall Panels are factory-engineered panel systems that provide the structural support, thermal and weather protection for direct-fix or ventilated cavity rainscreen façades.

KS1100KP Karrier Wall Panels can support the range of metallic and non-metallic Kingspan Rainscreen Façade finishes.



Product Highlights

- High performance polyisocyanurate (PIR) insulation core
- Maximum R-Value of 9.82 m²K/W*
- Through-fix, single component system for faster installation
- Available in 1,100 mm cover width and standard lengths of 2 to 13.7 metres
- 'Tongue and groove' joint achieves excellent thermal performance
- A range of large-scale third-party testing and accreditations are available – please consult the Product Data Sheet for more information
- Core thickness: 50 – 200 mm



For more information
scan or click here



* This value is seasonally dependent and varies on which thickness is used.

Eurobond Rainspan Wall Panel

Eurobond Rainspan Wall Panel is an interlocking stone wool core insulated panel that provide the structural support, thermal and weather protection for direct-fix or ventilated cavity rainscreen façades.

Eurobond Rainspan Wall Panels can support a range of external Kingspan Rainscreen Façade finishes.

Product Highlights

- Non-combustible stone wool core
- Maximum R-Value of 5.45 m²K/W*
- High density 115kg/m³
- Through-fix, single component system for faster installation
- Available in 1,100 mm cover width and standard lengths of 1.8 to 11.8 metres
- Suitable for vertical or horizontal application
- Factory-applied weather seal
- Up to 2 hours fire resistance (integrity and insulation) in accordance with AS 1530.4:2014**
- A range of large-scale third-party testing and accreditations are available – please consult the Product Data Sheet for more information
- Core thickness: 100 – 240 mm



For more information
scan or click here

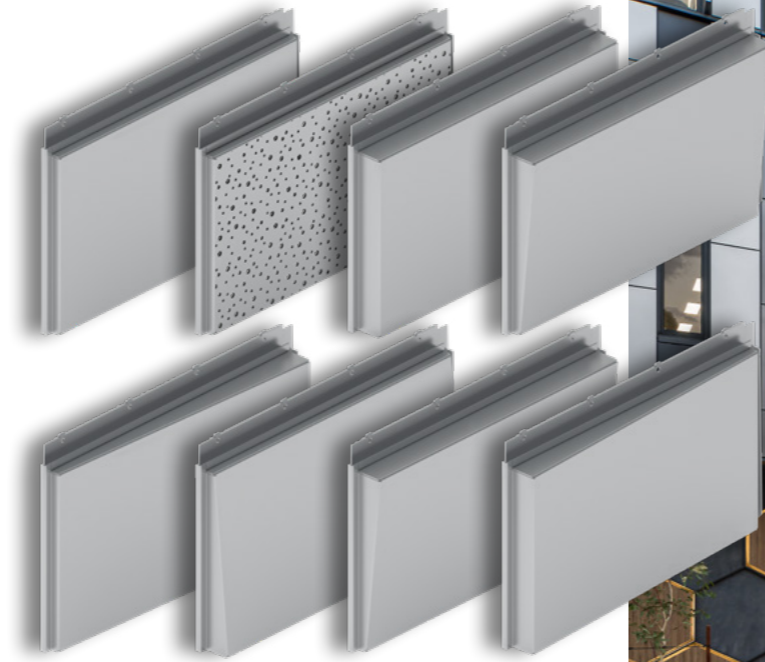
* This value is seasonally dependent and varies on which thickness is used.

** Fire resistance levels are subject to panel thickness, width, orientation, distance between supports and method of assembly. Please contact Technical Team for the specific installation detail required.



Dri-Design

Dri-Design rainscreen façade installs faster than many comparable systems and can be directly fixed to the external skin of Kingspan Rainspan or Karrier Panel, or be fixed to top hats to form a ventilated cavity with a traditional construction method. The cassettes come in three variations – flat, tapered, and shadow.



Product Highlights

- Material: Aluminium polyester powder coated (PPC)
- Deemed to Satisfy (DTS) non-combustible under provision C2D10 (6) (e) of the National Construction Code 2022
- Direct fix to KS1100KP Karrier Panel or Eurobond Rainspan Wall Panel
- Minimum components; only secured by fixing along the horizontal flange top edge
- Cassettes types and sizes seamlessly interchangeable



For more information
scan or click here



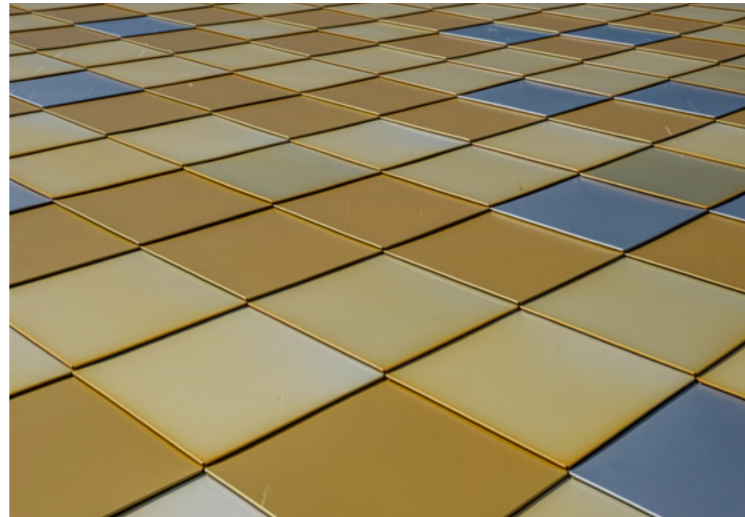
Shingle

Shingle is a flat overlapping façade system formed by interlocking quadrilateral aluminium sheets which are secret-fixed directly to KS1100KP Karrier Wall Panel or Eurobond Rainspan Wall Panel by stainless steel clips and rivets. They can be laid in square, rectangular or diamond shapes and patterns, providing a unique fish scale style effect to create a modern building facade.



Product Highlights

- Fixing Method: Direct-fix to Kingspan KS1100KP Karrier Wall Panel or Eurobond Rainspan Wall Panel
- Material: Aluminium polyester powder coated (PPC)



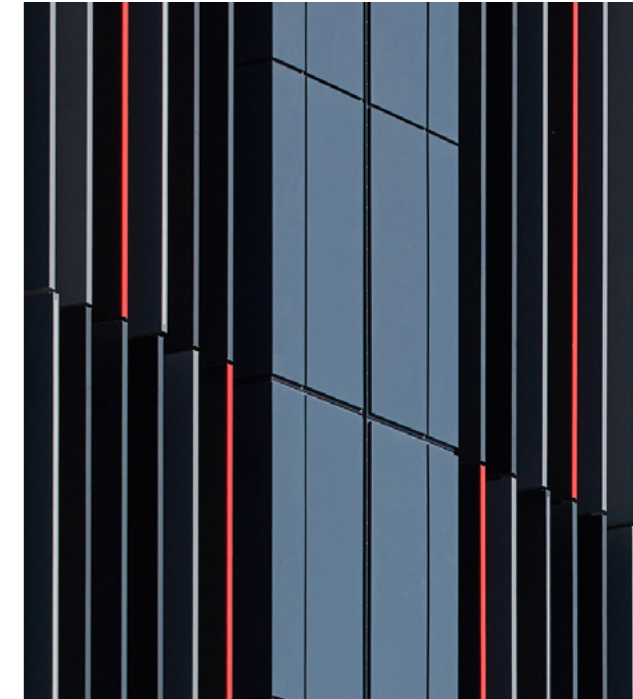
For more information
scan or click here

Recess Fixed Cassette

The Recess Fixed Cassette offers a value-engineered alternative to the Hook-On Cassette System that can be installed horizontally or vertically with standard joint widths. It is compatible with our KS1100KP Karrier Wall Panel System and can be fixed directly through the external structural face of the substructure and is installed with colour-matched rivets.

Product Highlights

- A cost-efficient facade system
- Direct-fix or via rail supports to KS1100KP Karrier Panel or Eurobond Rainspan (via top hats)
- Material: Aluminium polyester powder coated (PPC)



For more information
scan or click here

Hook-on Cassette

Hook-on Cassette is a large format, secret-fix façade solution, supplied with proprietary vertical mullions and accessories. The solution allows for a fast and simple installation by hooking over locating clips installed within the mullions, providing a 10-20 mm shadow line joint. Hook-on Cassettes can be installed on KS1100KP Karrier Panel System or Eurobond Rainspan Wall Panels.




Product Highlights

- Secret-fix to KS1100KP Karrier Panel or Eurobond Rainspan Wall Panel via proprietary vertical mullions and accessories
- Material Options: Aluminium as standard. Other material options are available with lead times on request
- Flat as standard. Bespoke depths, tapered angles and perforated options available with lead times on request



For more information
scan or click here

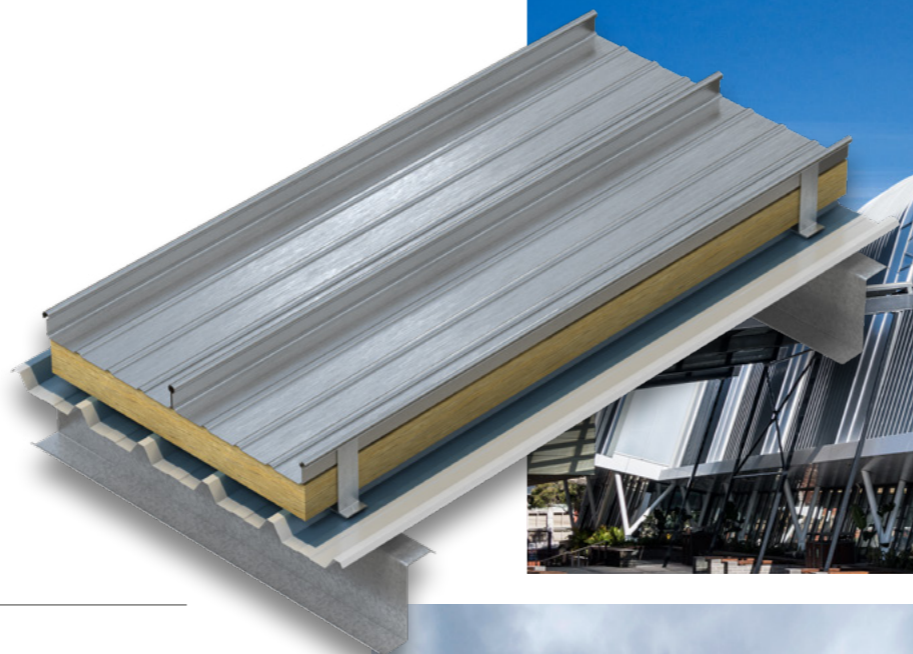


Architectural Roofing Systems

- KingZip Standing Seam
- KingZip Infiniti Standing Seam

KingZip Standing Seam

KingZip is a built up standing seam system that enables you to create angular, convex, concave and tapered architectural forms in 2D geometric capability.



Product Highlights

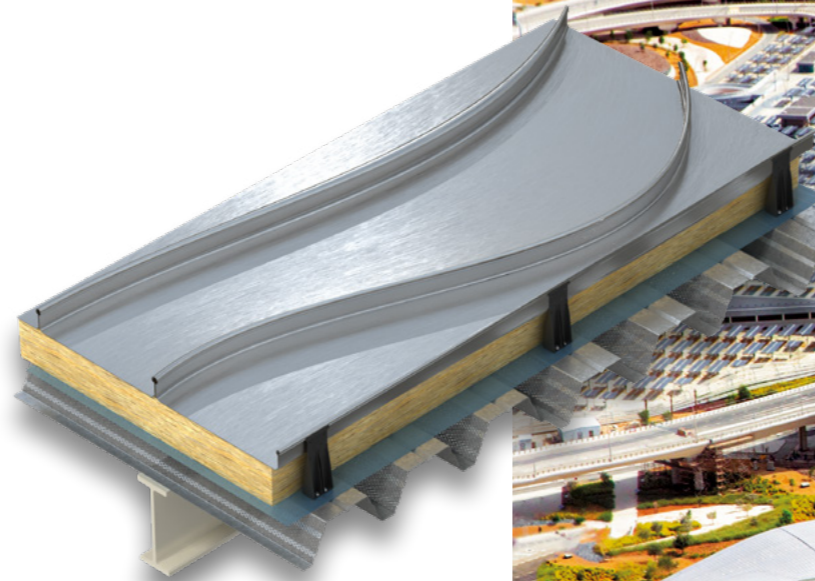
- Material: Aluminium or steel
- Standard cover widths: 300 or 400 mm as standard
- Lengths from 1.5 – 150 m (site rolled), 1.5 – 15 m (factory rolled)
- Can be tapered
- Suitable for curved applications – can be curved to 5 m for convex and 8 m for concave (for 0.9 mm / 1.2 mm thick aluminium)



For more information
scan or click here

KingZip Infiniti Standing Seam

KingZip Infiniti is a built-up standing seam system offering unprecedented freedom to create extraordinary 3D geometric buildings with complex shapes and forms.



Product Highlights

- 3D complex geometry capability
- KingZip Infiniti can be tapered or smooth curved to 1 m convex and 8 m concave radii (for 1.2 mm aluminium rollforming)
- Available in cover widths from 130 - 1000 mm
- Long term weatherproofing and durability
- Advanced structural, thermal, acoustic and fire performance



For more information
scan or click here



Images from Abu Dhabi Airport

Controlled Environments & Data Centre Solutions

- KS1100 / 1200CS Coldstore Panel
- Eurobond Firemaster Extra / Ultima Wall Panel
- Eurobond Firemaster Ceiling Panel

KS1100 / 1200CS Coldstore Panel

KS1100 / 1200CS Coldstore Panels are designed for use within temperature controlled and hygiene-safe environments such as food processing, deep freeze, cold / chill store and clean rooms for bio-technology and pharmaceutical industries.

Ideal for internal and external walls and ceilings, including internal 'box within a box' applications, KS1100 / 1200CS Coldstore Panels can be installed vertically or horizontally.

Flat KS1100 / 1200CS

Rib KS1100 / 1200CS

Product Highlights

- High performance polyisocyanurate (PIR) insulation core
- Maximum R-Value of 9.82 m²K/W*
- Through-fix, single component system for faster installation
- Available in 1,100 mm and 1,200 mm cover widths and standard lengths of 2 to 13.7 metres
- Choice of two profiles - flat and rib
- A range of large-scale third-party testing and accreditations are available - please consult the Product Data Sheet for more information
- Core thickness: 50 - 200 mm



For more information
scan or click here

* This value is seasonally dependent and varies on which thickness is used.



Eurobond Firemaster Extra / Ultima Wall Panel

The Eurobond Firemaster Extra and Ultima Wall Panels are internal wall solutions that are suited for non-load bearing internal partition walls. The panels are available in a wide range of finishes, including a foodsafe coating, providing a smooth, anti-static internal surface.

Ideal for use in food processing and storage applications, along with data centres, microelectronics and pharmaceutical facilities, where protected zones or cleanrooms are often required.

Product Highlights

- Non-combustible stone wool core
- Maximum R-Value of 6.79 m²K/W*
- High density 115kg/m³
- Through-fix, single component system for faster installation
- 1,100 mm cover width and standard lengths of 1.8 to 11.8 metres
- Choice of three distinct profiles – Flat, Mini-bead and Equi-bead
- Up to 2 hours (Firemaster Extra) and 4 hours (Firemaster Ultima) fire resistance (integrity and insulation) in accordance with AS 1530.4:2014**
- A range of large-scale third-party testing and accreditations are available – please consult the Product Data Sheet for more information
- Core thickness: 75 – 300 mm



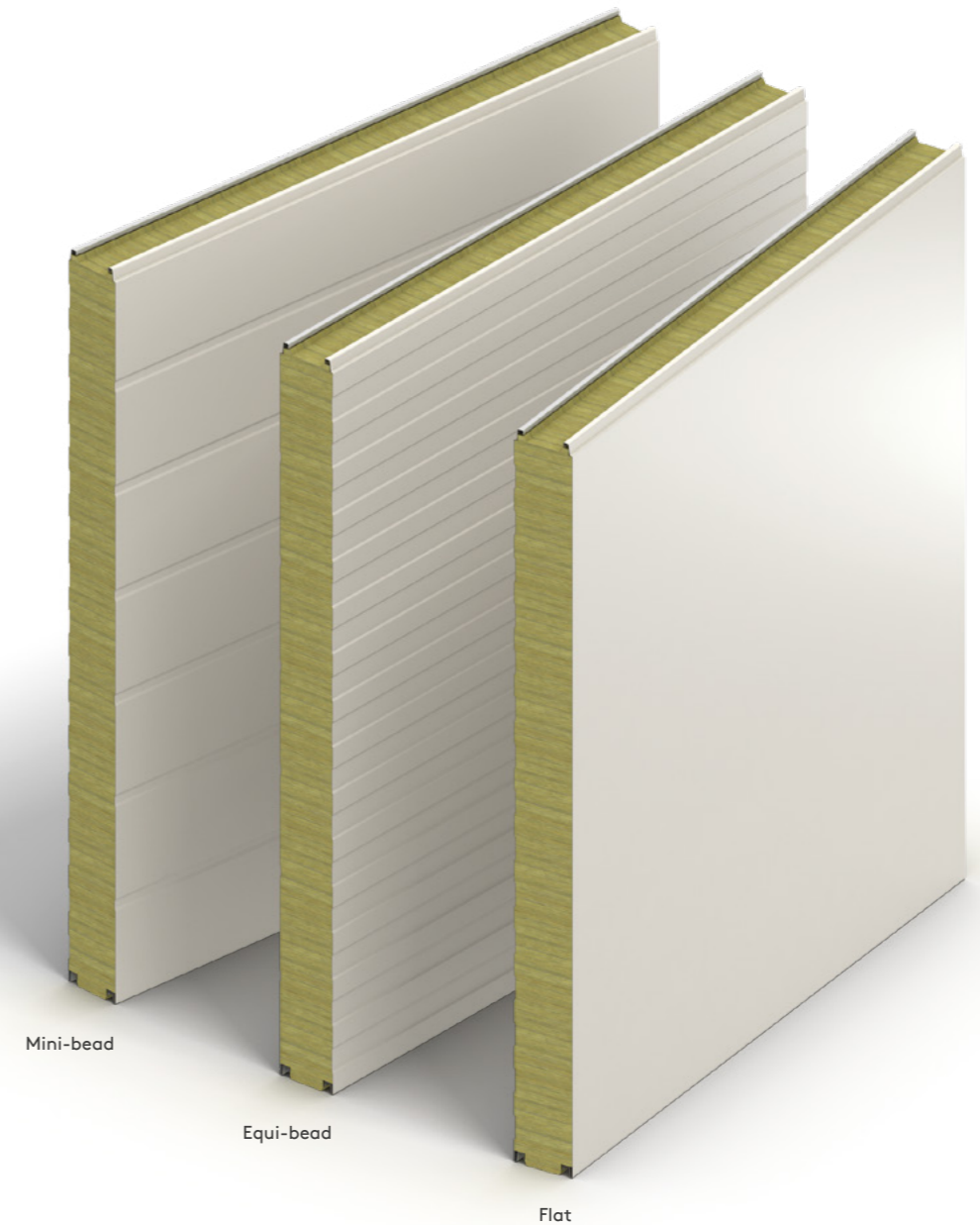
For more information
scan or click here



For more information
scan or click here

* This value is seasonally dependent and varies on which thickness is used.

** Fire resistance levels are subject to panel thickness, width, orientation, distance between supports and method of assembly. Please contact Technical Team for the specific installation detail required.

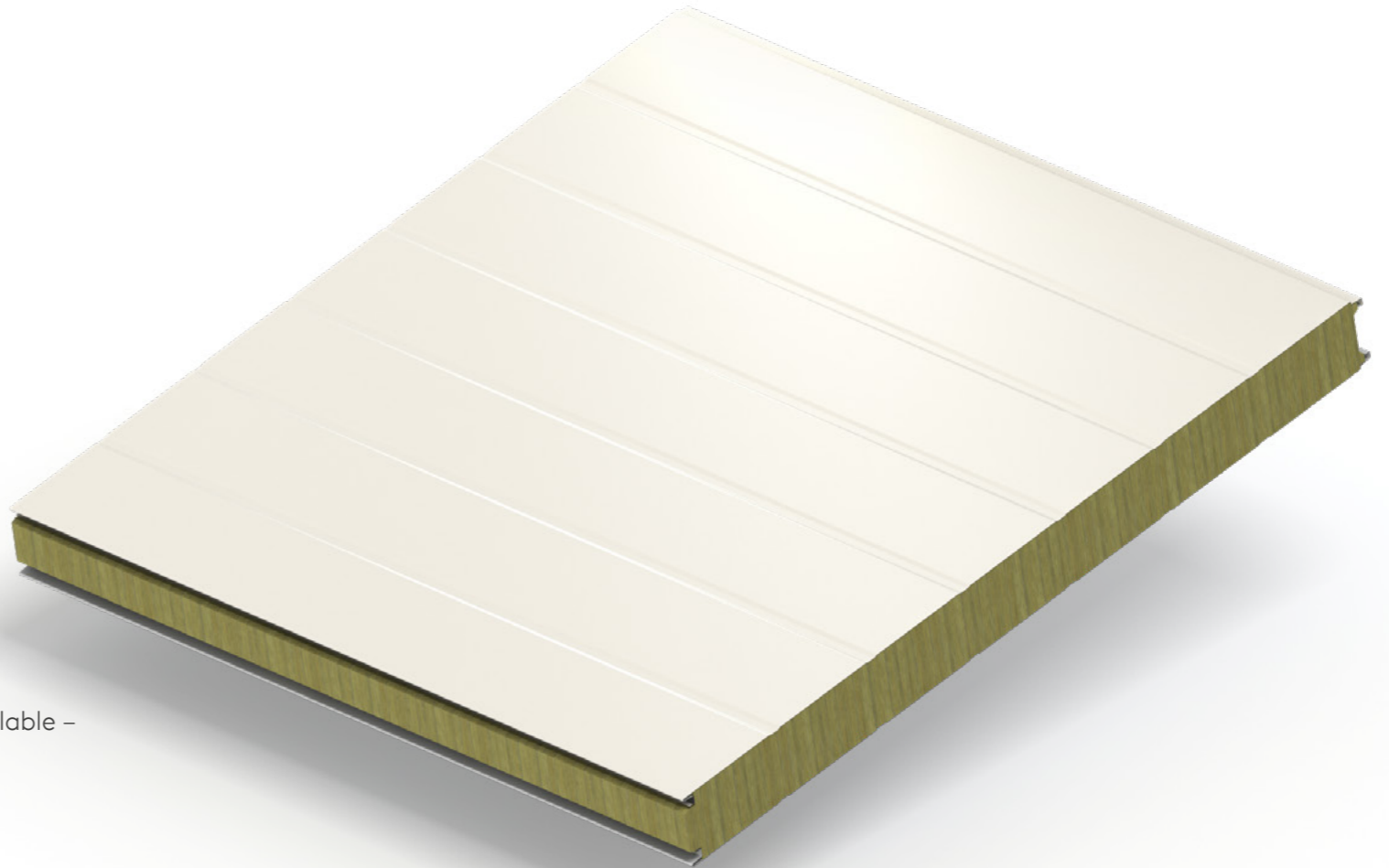


Eurobond Firemaster Ceiling Panel

The Eurobond Firemaster Ceiling Panel is a non-combustible core panel used as walk-on (access and maintenance) or nonwalk ceilings and is ideal for use in food processing and storage applications, along with data centres, microelectronics and pharmaceutical facilities, where protected zones or cleanrooms are often required.

Product Highlights

- Non-combustible stone wool core
- Maximum R-Value of 6.78 m²K/W*
- High density 115kg/m³
- Through-fix, single component system for faster installation
- 1,100 mm cover width and standard lengths of 1.8 to 11.8 metres
- Choice of three distinct profiles – Flat, Mini-bead and Equi-bead
- Up to 2 hours fire resistance (integrity and insulation) in accordance with AS 1530.4:2014**
- A range of large-scale third-party testing and accreditations are available – please consult the Product Data Sheet for more information
- Core thickness: 75 – 300 mm



For more information
scan or click here

* This value is seasonally dependent and varies on which thickness is used.

** Fire resistance levels are subject to panel thickness, width, orientation, distance between supports and method of assembly. Please contact Technical Team for the specific installation detail required.

Fabrications

- Membrane Lined Insulated Gutter
- Top Hats
- Roof & Wall Flashing
- Pre-formed Corners

Fabrications

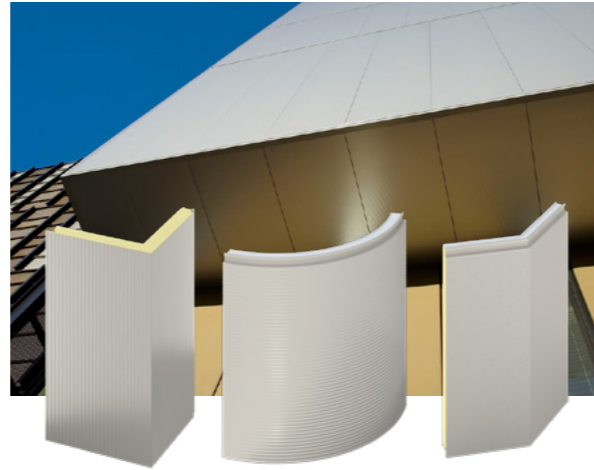
State-of-the-art production equipment and extensive experience enable us to produce eye-catching and unique architectural features to complete the building envelope.

Pre-formed Corner*

Our range of insulated preformed corners combines insulation continuity with aesthetic design to offer an alternative solution to traditional corner flashings. Our range includes curved, cranked and Z-Shaped corner panels.

Please speak to our commercial representative for more advice on whether this is suitable for your project.

* Only available on PIR for certain products/thicknesses.



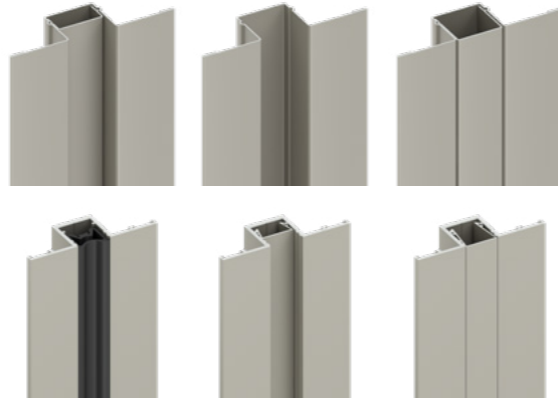
Roof & Wall Flashing

A wide selection of materials, gauges and finishes are available. Material options include pre-coated or galvanized steel and aluminium.



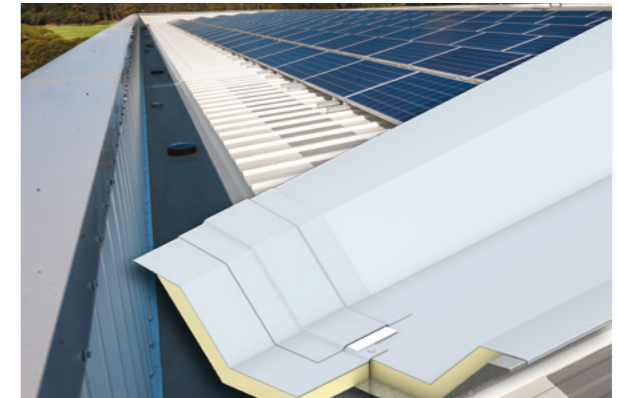
Top Hats

Metal top hats are available in 6 designs, compatible with our range of insulated wall panels. The top hats provide solutions for vertical and horizontal applications. Available in steel or aluminium options.

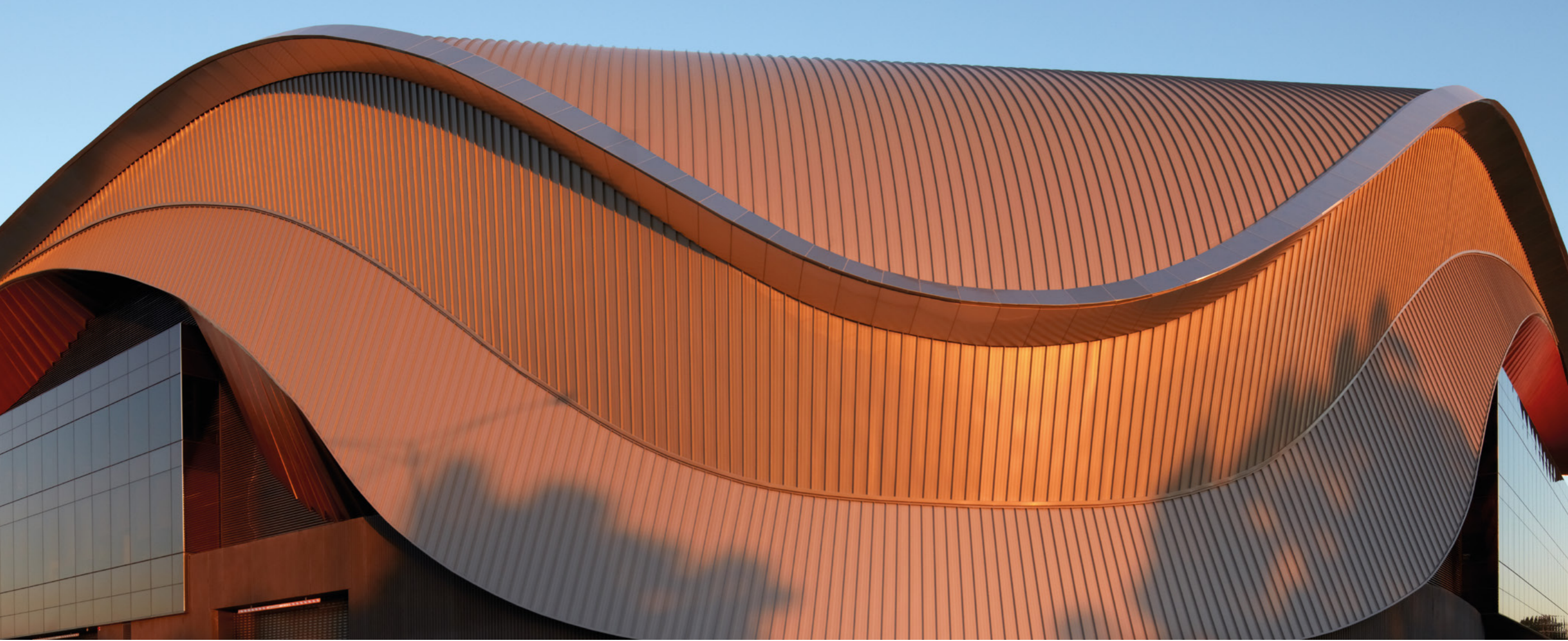


Membrane Lined Insulated Gutter

Our PIR Core membrane lined insulated gutter is suitable for both boundary wall and valley gutter applications. The gutters have customizable widths and lengths, giving you design flexibility. Gutter components to complete the system, including internal and external corners, stop-ends, T-sections and sumps are available on order.



For more information
scan or click here



www.kingspanpanels.com.au

Issue One—March 2024

