

SUPA^WTILE SLAT

Fully Accessible Slatted
Ceiling System

100% Accessibility • Australian Made • Unique BCA Fire Group 1 Options

Why SUPATILE SLAT?

SUPATILE SLAT is developed to fit into the traditional 2-way T-bar grid ceiling system.

Both decorative and sound absorbent, SUPATILE SLAT will quickly and easily transform any area with an up-market timber or linear look.



100% access to ceiling cavity



Multi-directional effects possible



Can fit existing ceiling grids

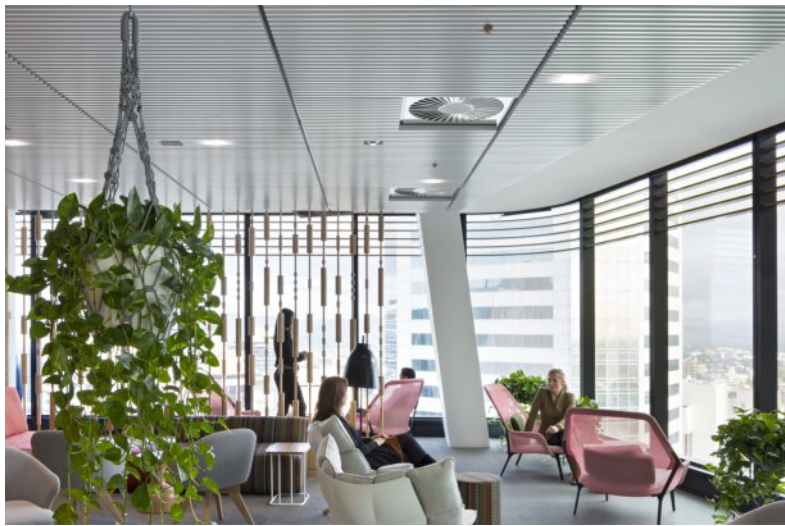


Quick and easy to install



Fire Resistant and Green options

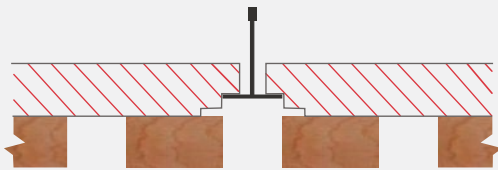




Make Your Mark

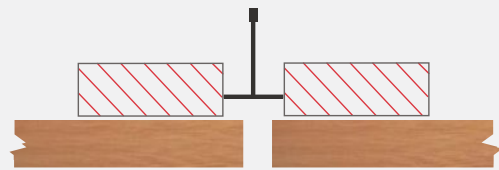
Fixing Detail

PANEL TO PANEL



PANEL TO PANEL

End to end joints are 5mm as standard



Grid Requirements: Existing grid may be repainted (enamel paint recommended) and used but must be able to support the weight of the tiles as well as the service load factors as prescribed in the AS2785. Refer to SUPAWOOD's Technical Services Department for tile weights.

What is required to achieve this will depend on the specific brand, system and configuration of the grid currently installed.

Typically, additional support would be expected to consist of additional hanger supports, but the contractor is to take independent advice on this from the supplier of the grid. Alternatively, SUPAWOOD's black grid can be used.

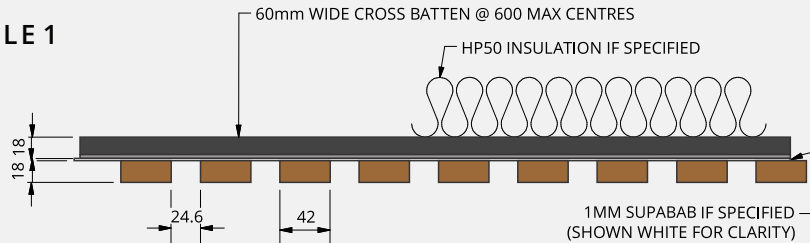
Standard panels sizes available:

1200 x 600 600 x 600 1200 x 300

The Standard Range

Available in five different profiles, and a wide variety of custom finishes.

PROFILE 1

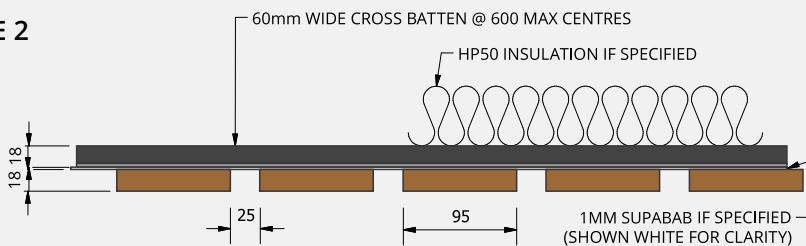


Open area 37% Typical weight 11kg/m²

FINISH OPTIONS

SUPAENEER
SUPATEXTURE
SUPAFINISH

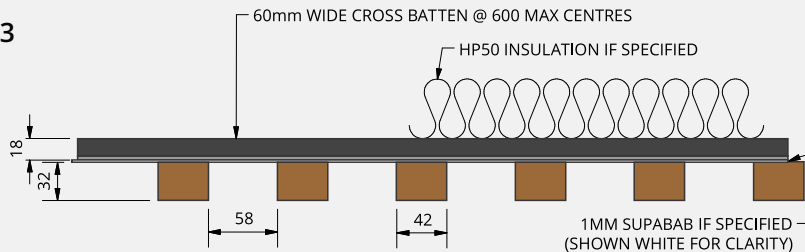
PROFILE 2



Open area 20.8% Typical weight 13kg/m²

SUPAENEER
SUPATEXTURE
SUPAFINISH
DRIFTWOOD

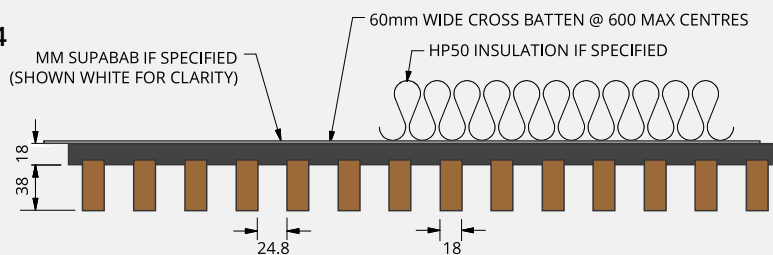
PROFILE 3



Open area 58% Typical weight 12kg/m²

SUPATEXTURE
SUPAFINISH

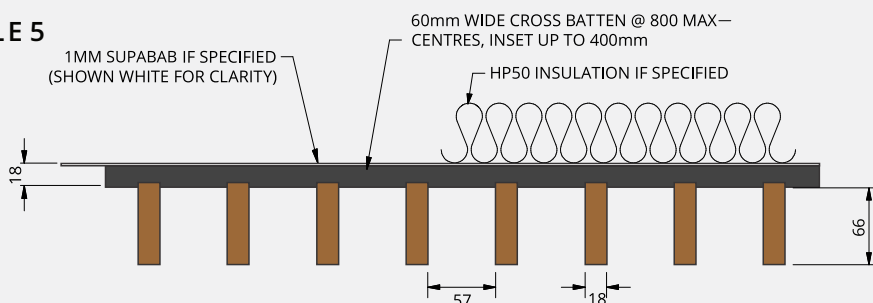
PROFILE 4



Open area 57% Typical weight 15kg/m²

SUPATEXTURE
SUPAFINISH

PROFILE 5



Open area 76% Typical weight 15kg/m²

SUPAENEER
SUPATEXTURE
SUPAFINISH
DRIFTWOOD

Note that the sizes above are nominal and will vary depending on finish type selected.

Finishes and colours

SUPA VENEER

(NTV) Natural Timber Veneer

Fire Group 2 panel options available.



Hoop Pine CC



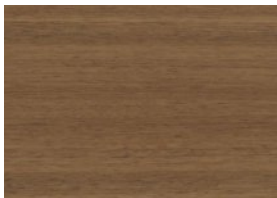
Tasmanian Oak 1/4



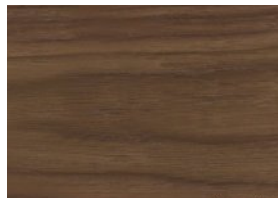
Blackbutt 1/4



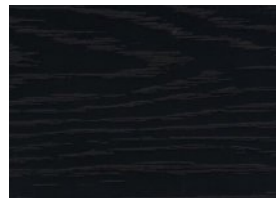
American Oak CC



Spotted Gum 1/4



American Walnut CC



Midnight Black



or
any other
species

Your choice

SUPA TEXTURE

(ST) Tactile Woodgrains & Finishes



Limewash



Vic Ash

Tactile and highly durable this film is available across the full range of panels, slats, beams and blades and available in fire retardant configurations.

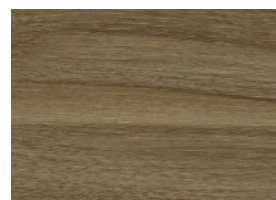
We're so confident in SUPATEXTURE we're offering a unique 30-year no hassle warranty.



Tasmanian Oak



Blackbutt



Spotted Gum

SUPAFINISH

(SF) Veneer & Coloured Laminates

Fire Group 1 and 2 options available.



Hoop Pine Limed SF



Fusion Maple SF



Hoop Pine Classic SF



Euro Beech SF



Tasmanian Oak SF



Blackbutt SF



Spotted Gum SF



Virgin Walnut SF



White SF



Black SF

DRIFTWOOD

The Rustic Timber Lining

Etching natural solid timber creates this unique, weathered effect.

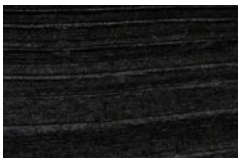
[Read more about it here >](#)



Driftwood Whitewashed



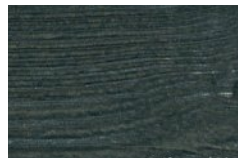
Driftwood White



Driftwood Black



Driftwood Clear Vic Ash



Driftwood Blackwashed



Example of colour variation in Driftwood Whitewashed

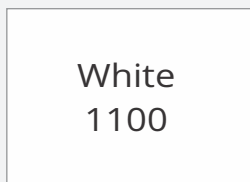
SUPACOLOUR

(SCR) Painted Finishes

Highly durable satin, high gloss and metallic finishes matched to any colour. Fire Group 1 and 2 available.



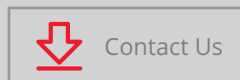
**MATCH TO ANY
COLOUR REFERENCE**



White
1100

NEED SOMETHING SPECIAL?

Can't find quite the right shade here? Get in touch with the team to discuss what custom finishes are possible and to request samples.





 [CLICK HERE TO DOWNLOAD OUR SUPATILE DESIGN & DETAILING MANUAL](#)

It's not easy to make your project stand out and satisfy performance, compliance and budget needs. We customise our systems to your requirements.

[DISCUSS YOUR PROJECT](#)

SUPAWOOD
ARCHITECTURAL LINING SYSTEMS

SUPAWOOD HEAD OFFICE
Australasian Support & Manufacturing
Aus: +61 1800 002 123
NZ: +64 (0) 9887 3234
info@supawood.com.au

SUPAWOOD UK
UK & EU Support & Manufacturing
+44 (0) 3307 00 00 30
sales@supawood.com.uk