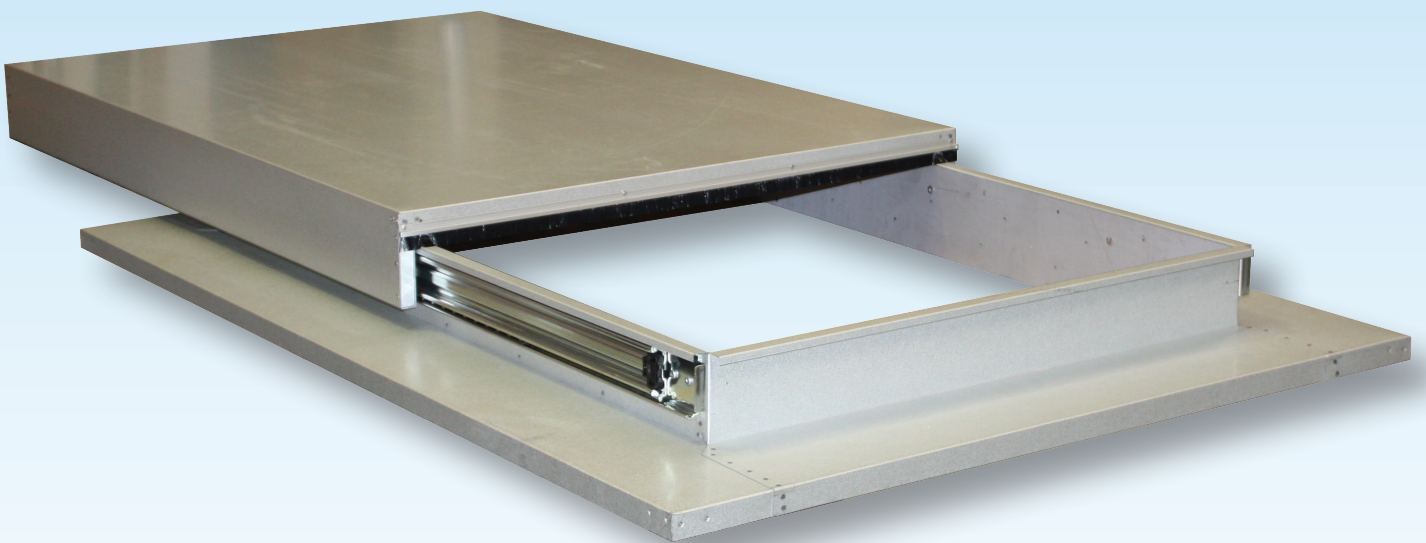




**SKYSPAN**  
AUSTRALIA PTY LTD

# EZISLIDER

SLIDING ACCESS HATCHWAY SYSTEM

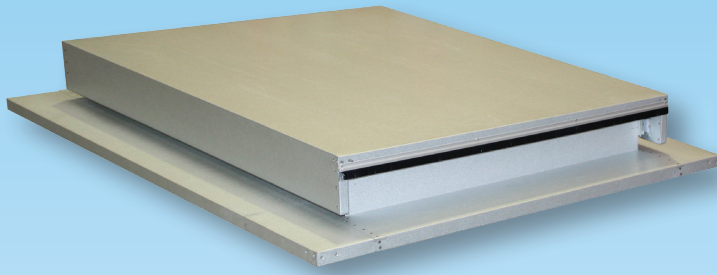


**The Safe & Easy  
Roof Access System**

***“Utilizing Nature’s Gift”***



**SKYSPAN**  
AUSTRALIA PTY LTD



# EZISLIDER

## SLIDING ACCESS HATCHWAY SYSTEM

**The Safe & Easy Roof Access System**

### Information

The Skyspan EziSlider Sliding Access Hatchway system is a sturdy built Australian made access hatchway for safe access/egress to the roof space for numerous applications. It is ideal for commercial applications. This system proves to be ideal for high wind areas as they do not have the sail action of a conventional hatchway system.

### Technical

#### Material

The Skyspan EziSlider Sliding Access Hatchway is manufactured from Zincalume steel as a standard for durability and has lockable latches and a pull handle inside as standard. The hatchway comes with the option of Powdercoating to complement the Colorbond range of colours. The Skyspan EziSlider is also available in a range of materials including Aluminium and Stainless Steel. The Skyspan EziSlider Sliding Access Hatchway comes with the option of a double skinned insulated lid.

#### Hardware

The Skyspan EziSlider Sliding Access Hatchway uses the Skyspan Ezislide bearing assisted sliding mechanism that provides a smooth sliding lid that does not have rails protruding from the rear of the hatch when closed, doing away with the trip hazard associated with traditional sliding hatches.

### Flashing

The Skyspan EziSlider Sliding Access Hatchway comes with built in flashings to suit all types of Australian roof profiles and including Tile roofs and concrete hobs.

### Specification

Sliding Access Hatchway shall be EziSlider - Sliding Access Hatchway model no. \_\_\_\_\_ by Skyspan Australia Pty Ltd with roof opening size of \_\_\_\_\_. Shall include EziSlide bearing assisted slide mechanism. The flashing shall be manufactured from Zincalume steel materials (or state requirement) in a mill finish (or state requirement). Units shall be fitted with Skyspan upstand base to suit \_\_\_\_\_ (state roof type).

MODEL	
PRODUCT CODE	SIZE (Opening Size)
MSH80120	800mm x 1200mm
MSH900	900mm x 900mm
MSH100150	1000mm x 1500mm

### Maintenance

The Sliding Access Hatchways should be inspected periodically. They are normally cleaned by the elements. Should they need cleaning, wipe over with soap and water. Avoid using solvents and thinners. Dust and wipe over to ensure that any build up or caked dust is removed which could prematurely cause corrosion.

Specifications subject to change without notice.



**SKYSPAN**  
AUSTRALIA PTY LTD

**1300 SKYSPAN – [www.skyspan.com.au](http://www.skyspan.com.au)**

12 Turbo Road, Kings Park NSW 2148

Ph: (02) 9622 1366 Fax: (02) 9622 6866

Email: [sales@skyspan.com.au](mailto:sales@skyspan.com.au)

This information is intended to give a fair description of the product and their capabilities under test conditions. It does not constitute an offer by the manufacturer nor does the manufacturer warrant or guarantee its accuracy or completeness in describing the performance or suitability of the various products. Specifications may change at any time without notice.

© Copyright Skyspan Australia Pty Ltd, April 2014. No part of this publication may be copied, reproduced, scanned, stored in any electronic databases, whether in whole or part, in any form or by any means without the written permission of Skyspan Australia Pty Ltd. If copyright is infringed we will take appropriate legal action.