

# LF550



## SPECIFICATION

Construction	Aluminium
Fixing	Stainless Steel Patch fittings
Glazing	Up to 21.52mm glass
Width	Up to 1800mm* (Single span)
Blade Height	400mm up to 600mm*
Opening Angle	Project dependent, up to 80
Drives	Electric drive 24VDC
Water Penetration (AS2047)	
Air Infiltration (AS2047)	
Ultimate (AS2047)	

**GENERAL INFORMATION:**

THE LOUVRE DESIGN CAN BE ALTERED TO SUIT ANY APPLICATION & GREATER VALUES THAN THOSE SHOWN ABOVE MAY BE ACHIEVABLE

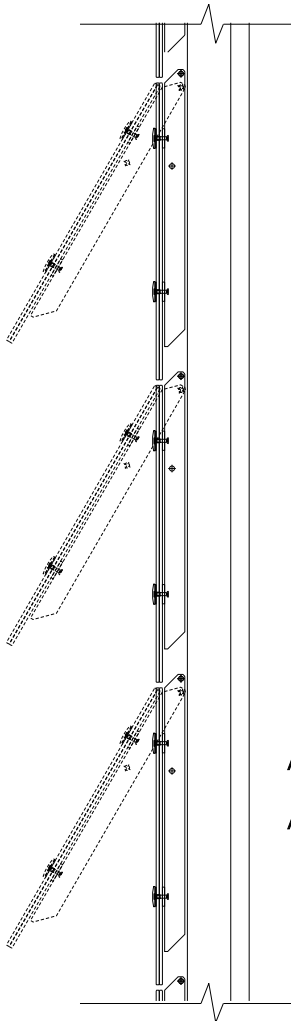
\*Depending on wind loading and glazing, greater louvre width & heights could be achieved

## LF550 LOUVRE SYSTEM

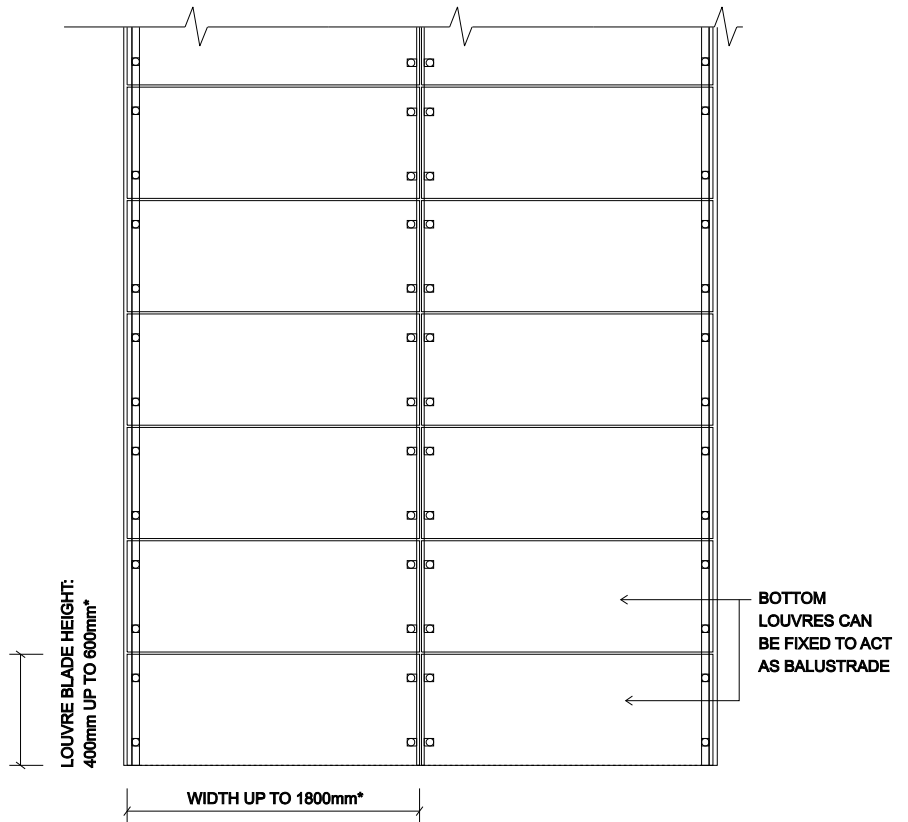


[www.ebsa.com.au](http://www.ebsa.com.au)

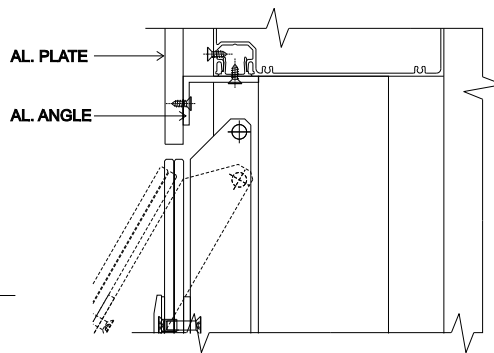
# LF550



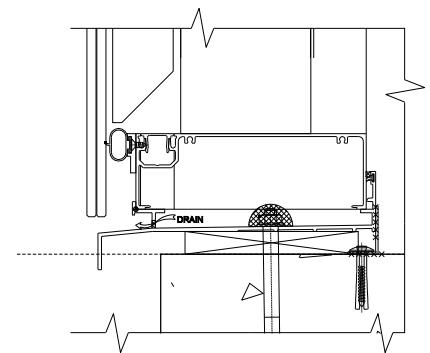
SECTION VIEW



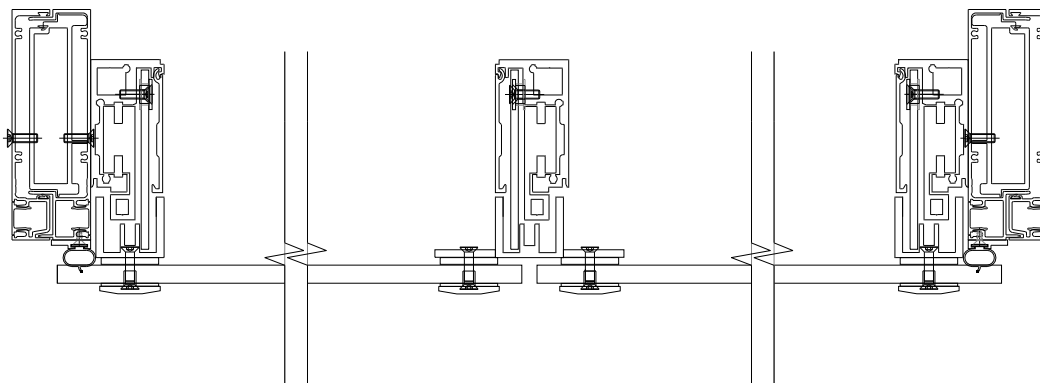
**ELEVATION**  
\* LOUVRE BLADE SIZES DEPEND  
GLASS THICKNESS & WIND LOADS



HEAD DETAIL



SILL DETAIL

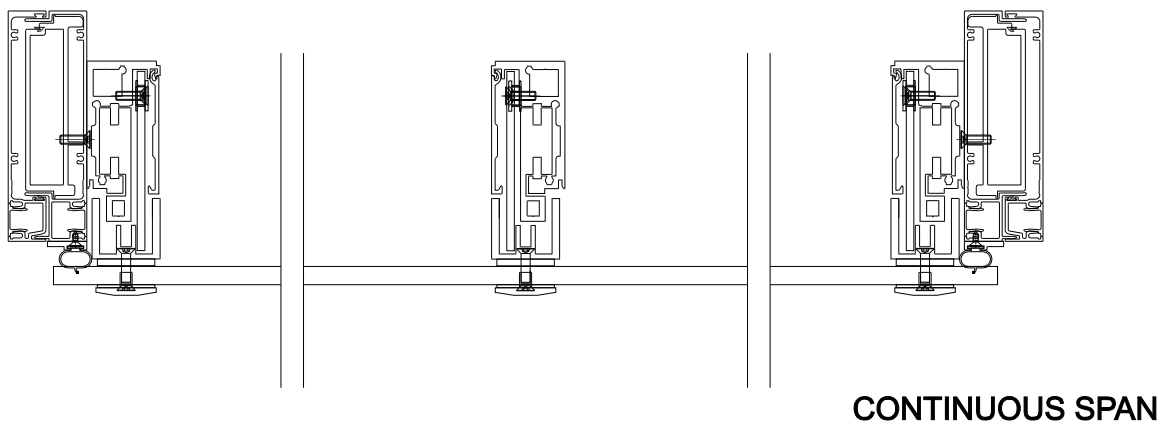
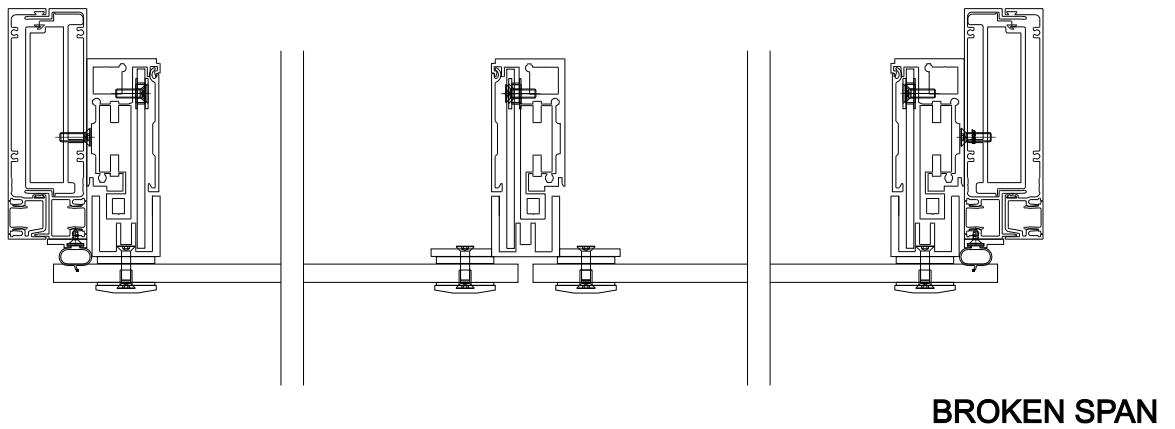
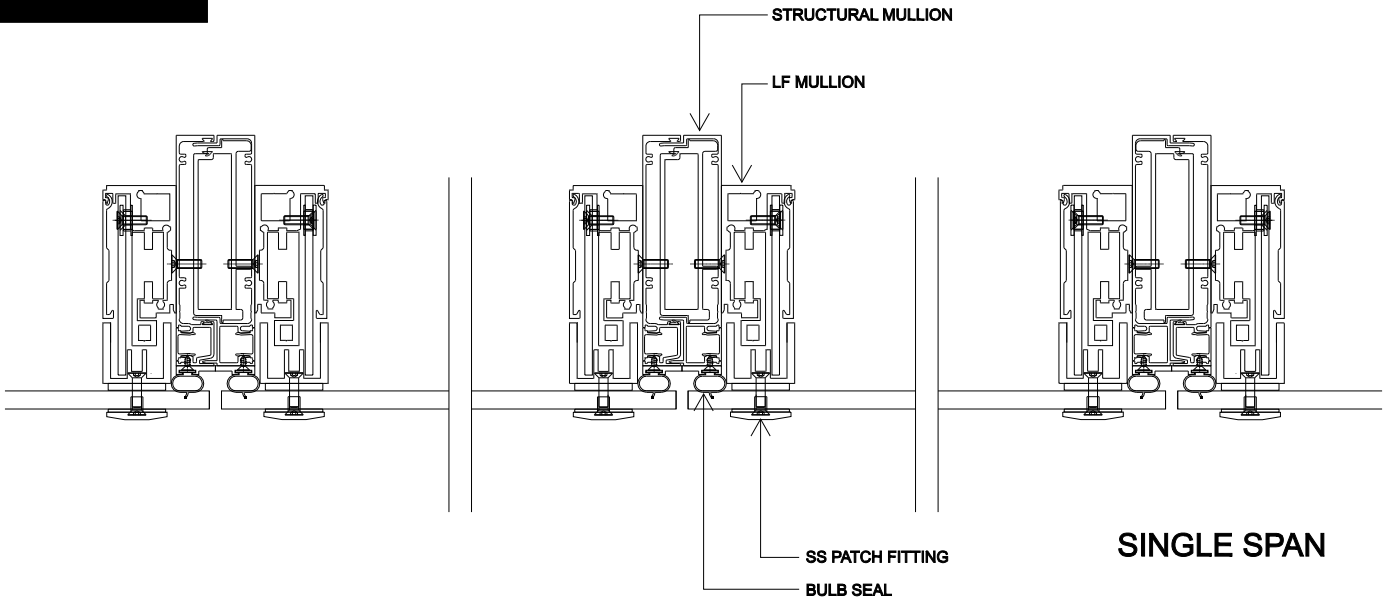


PLAN VIEW - BROKEN SPAN OPTION  
TYPICAL FIXING INTO 150mm GLAZING FRAME.

## LF550 LOUVRE SYSTEM



# LF550



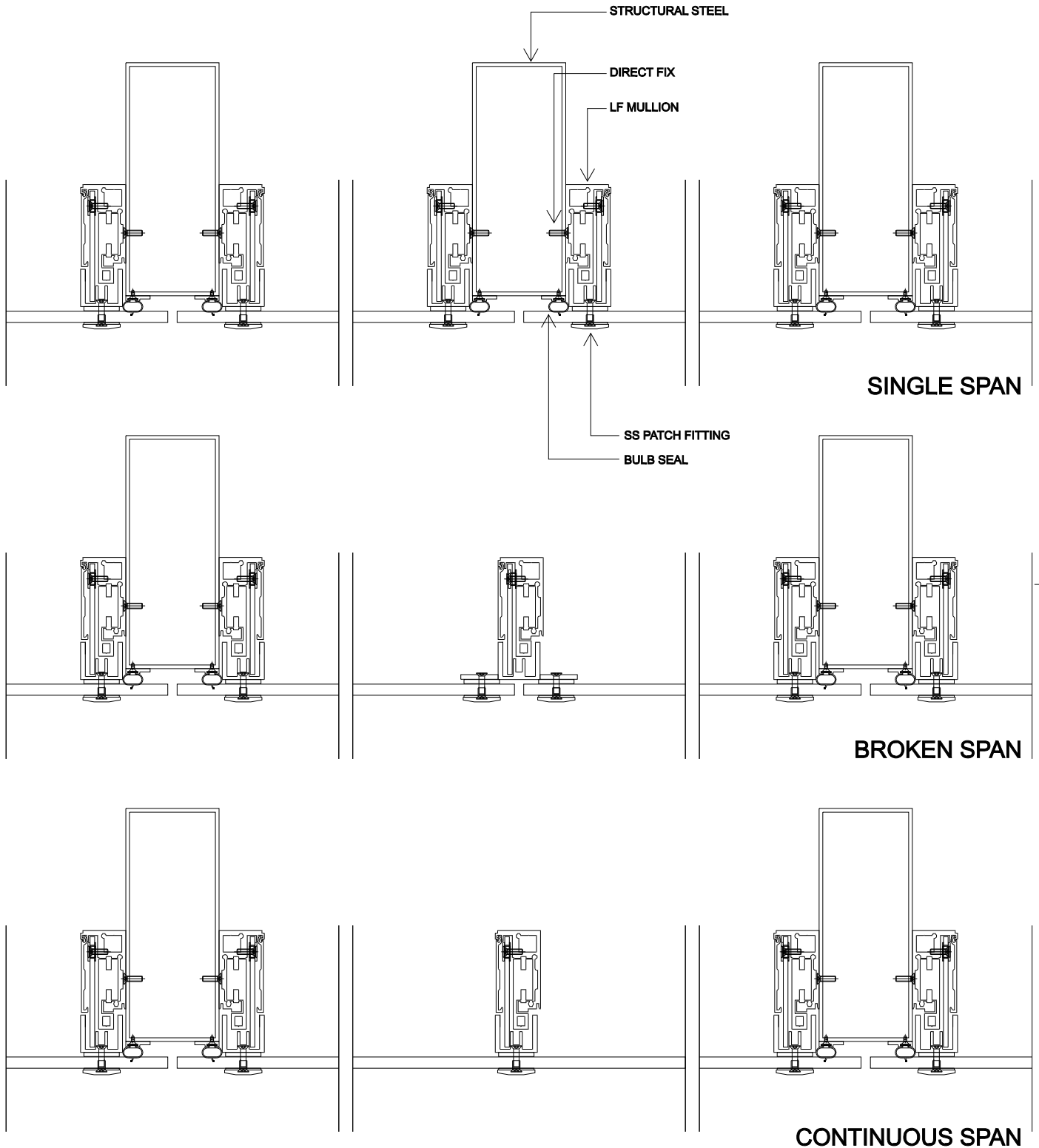
**FIXING OPTION: GLAZING SUITE- PROUD**

**LF550 LOUVRE SYSTEM**



[www.ebsa.com.au](http://www.ebsa.com.au)

# LF550



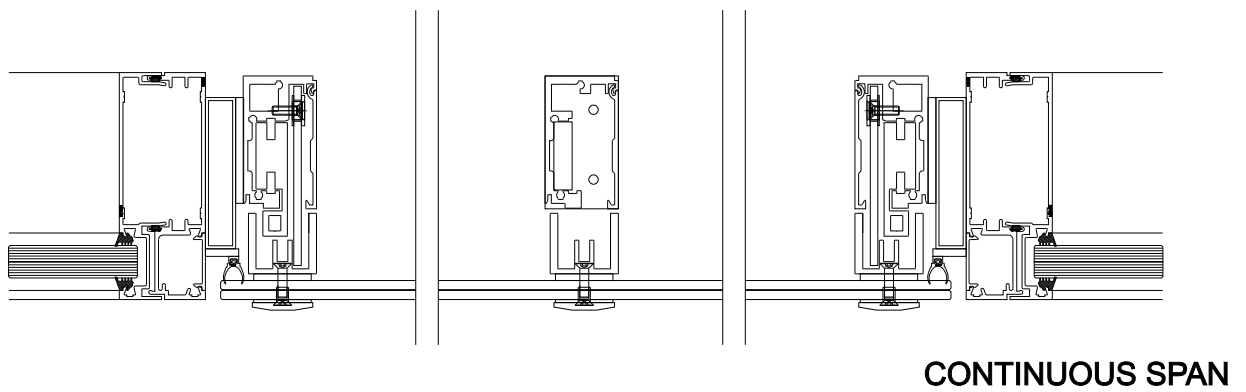
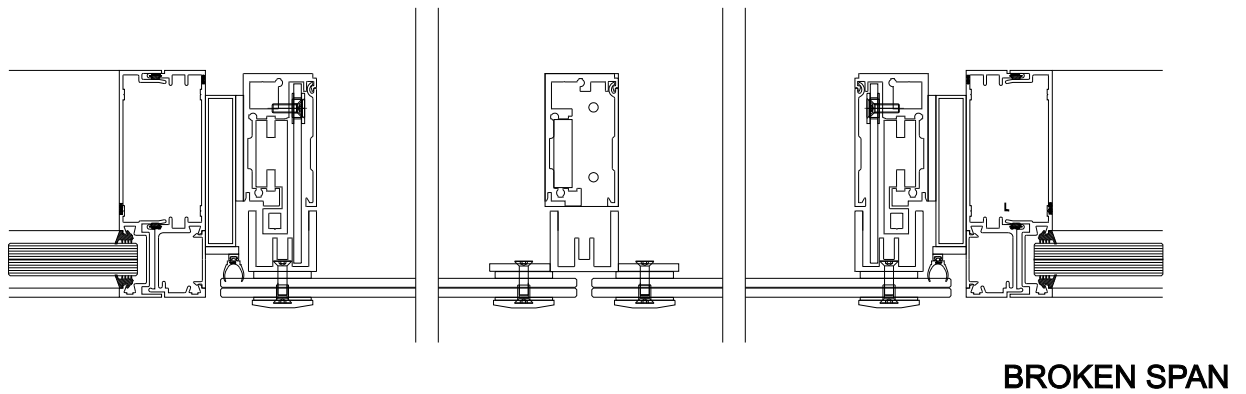
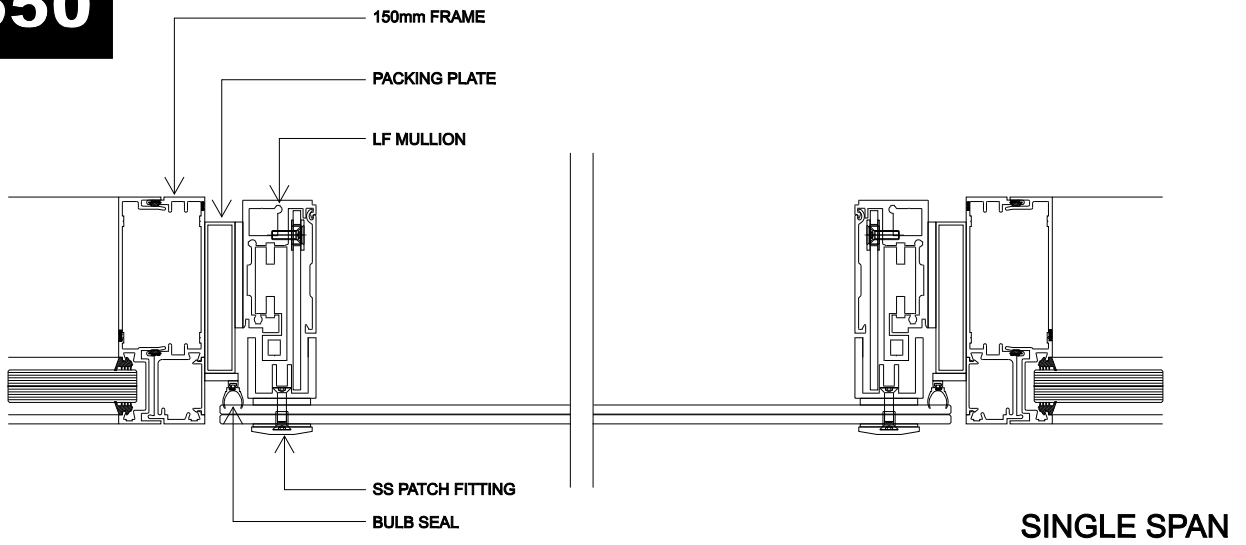
**FIXING OPTION: STEEL FRAME**

**LF550 LOUVRE SYSTEM**



[www.ebsa.com.au](http://www.ebsa.com.au)

# LF550



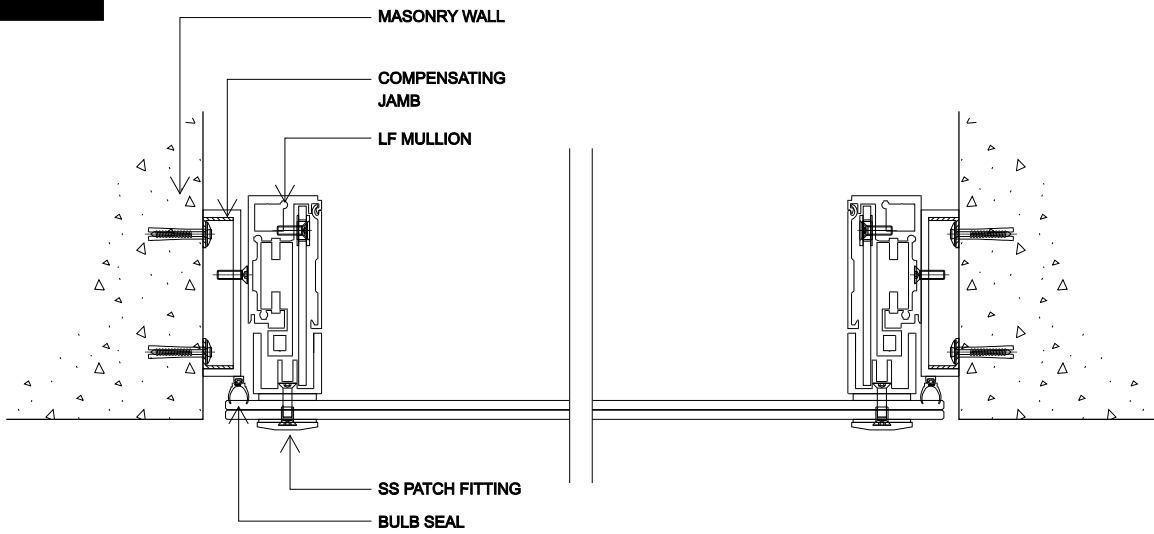
**FIXING OPTION: GLAZING SUITE- FLUSH**

**LF550 LOUVRE SYSTEM**

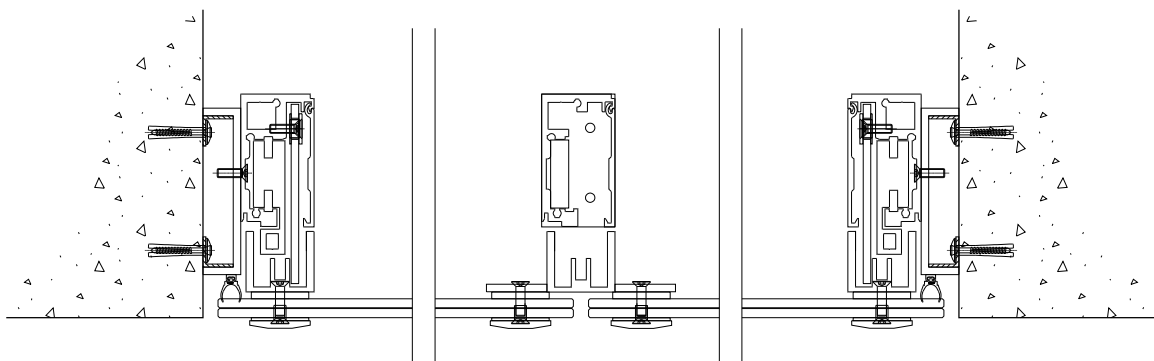


[www.ebsa.com.au](http://www.ebsa.com.au)

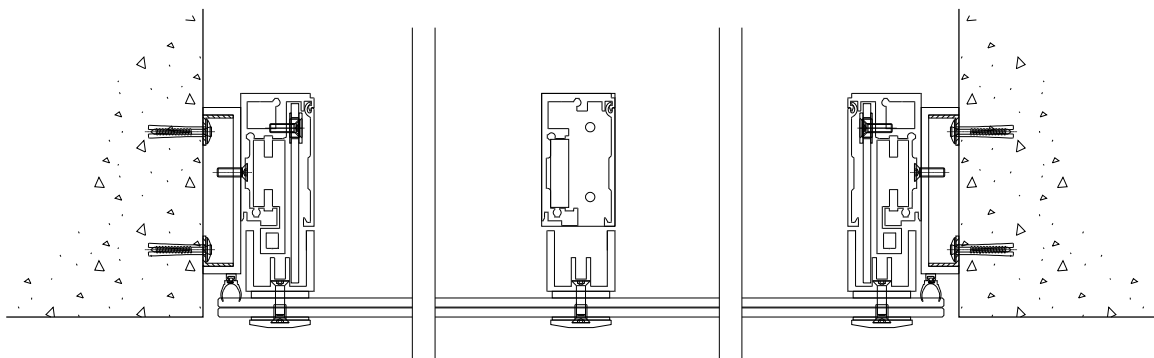
# LF550



SINGLE SPAN



BROKEN SPAN



CONTINUOUS SPAN

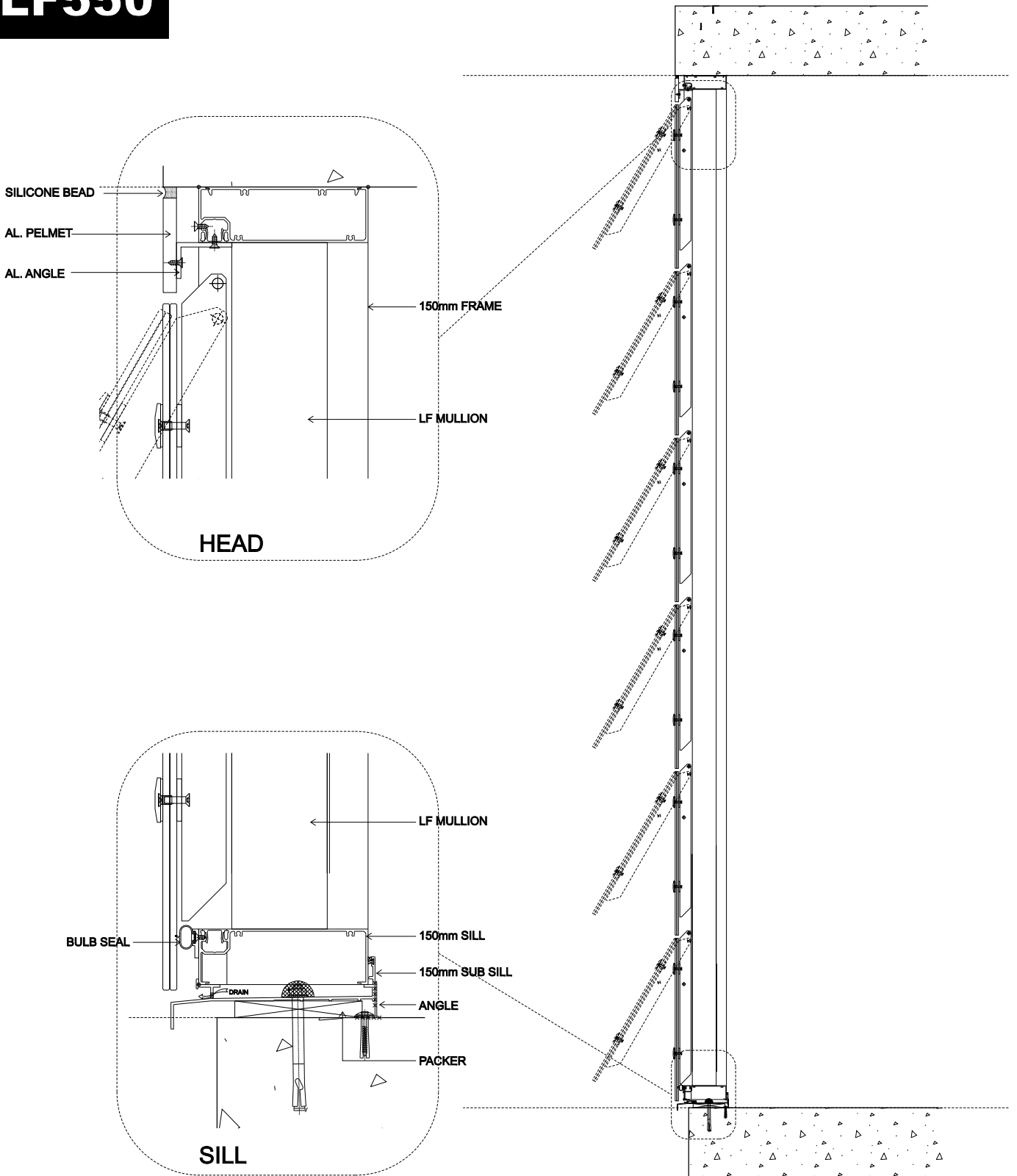
## FIXING OPTION: MASONRY

**LF550 LOUVRE SYSTEM**



[www.ebsa.com.au](http://www.ebsa.com.au)

# LF550



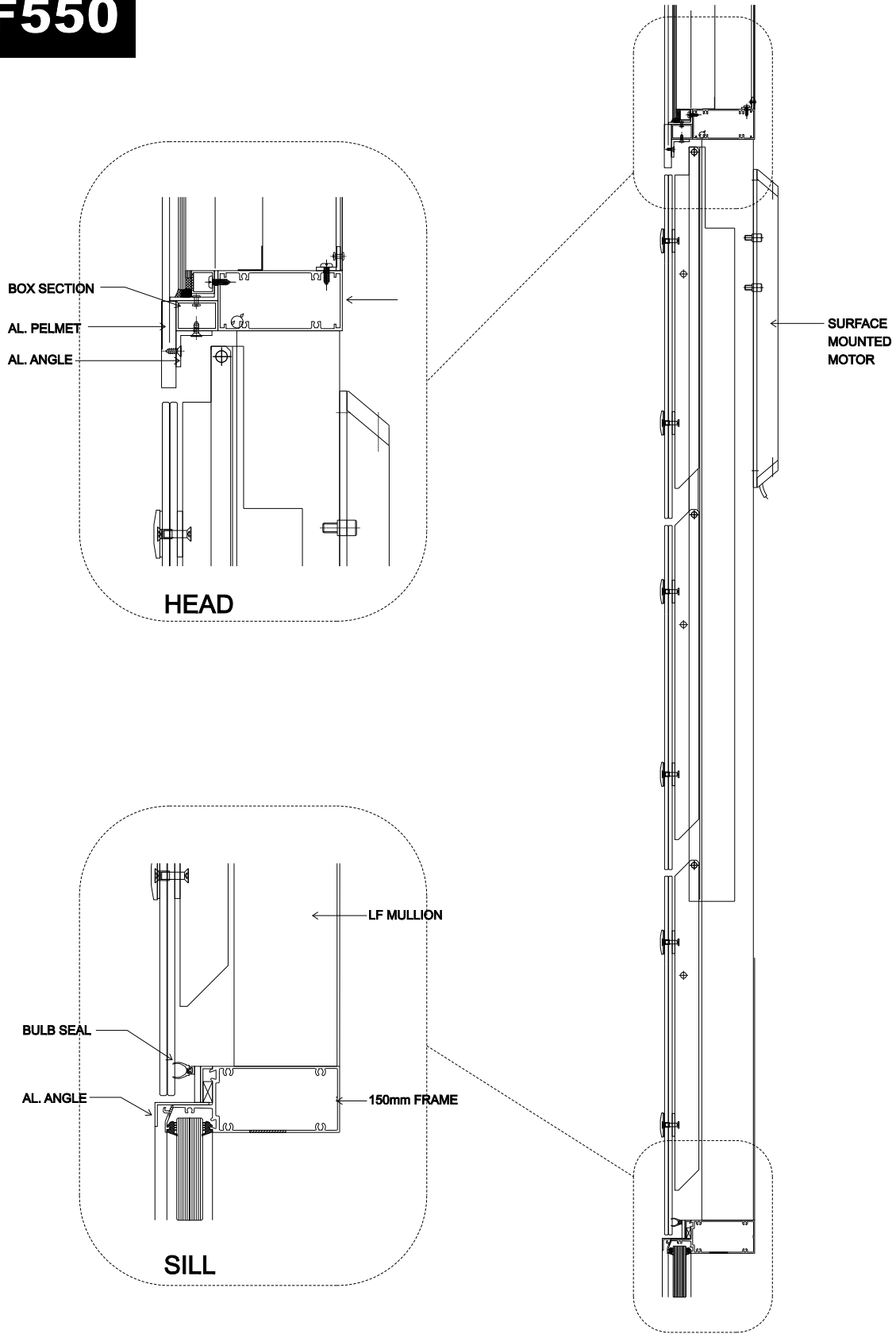
## HEAD & SILL DETAIL - MASONRY

### LF550 LOUVRE SYSTEM



[www.ebsa.com.au](http://www.ebsa.com.au)

# LF550



## HEAD & SILL DETAIL - GLAZING

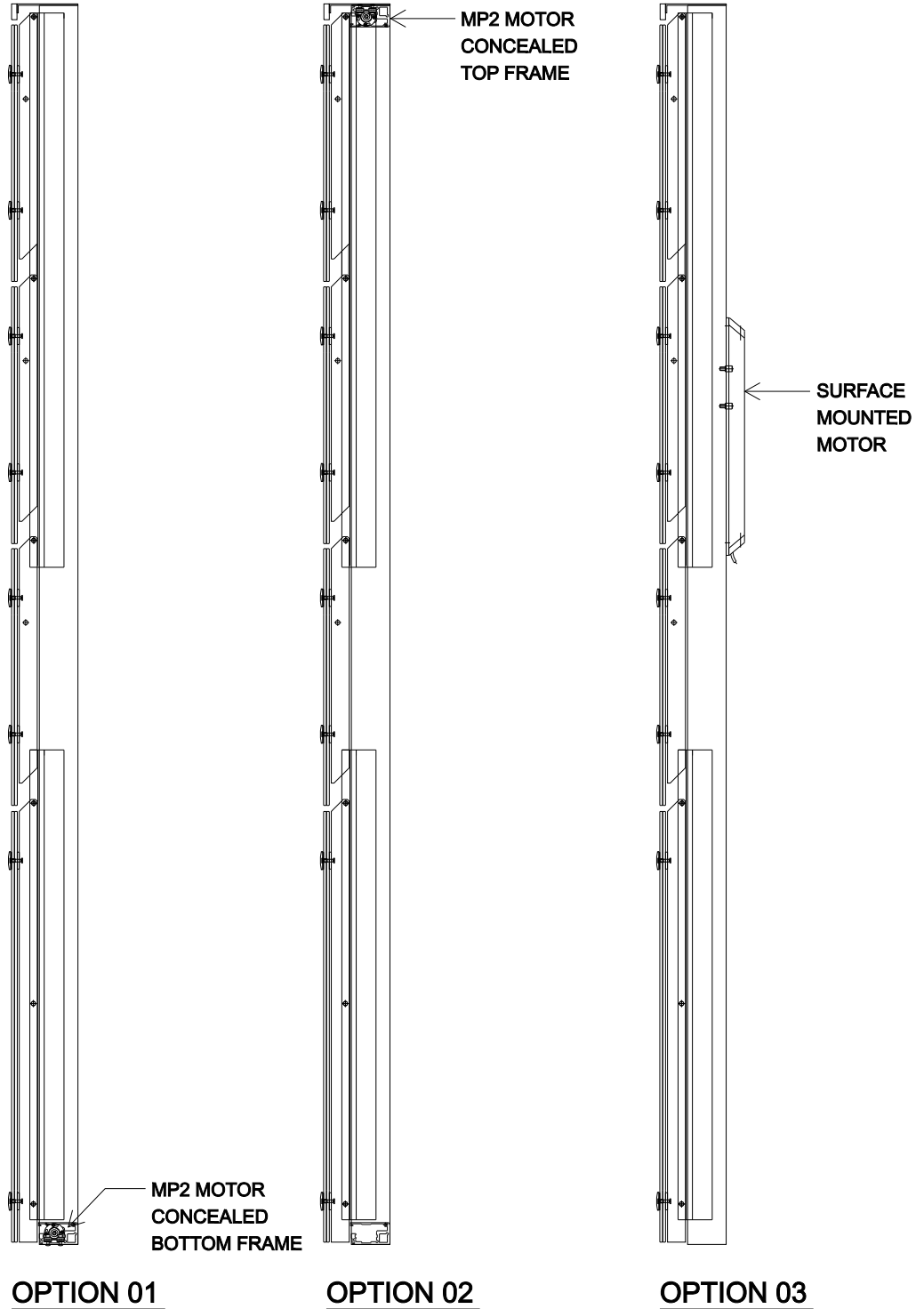
**LF550 LOUVRE SYSTEM**



[www.ebsa.com.au](http://www.ebsa.com.au)



# LF550



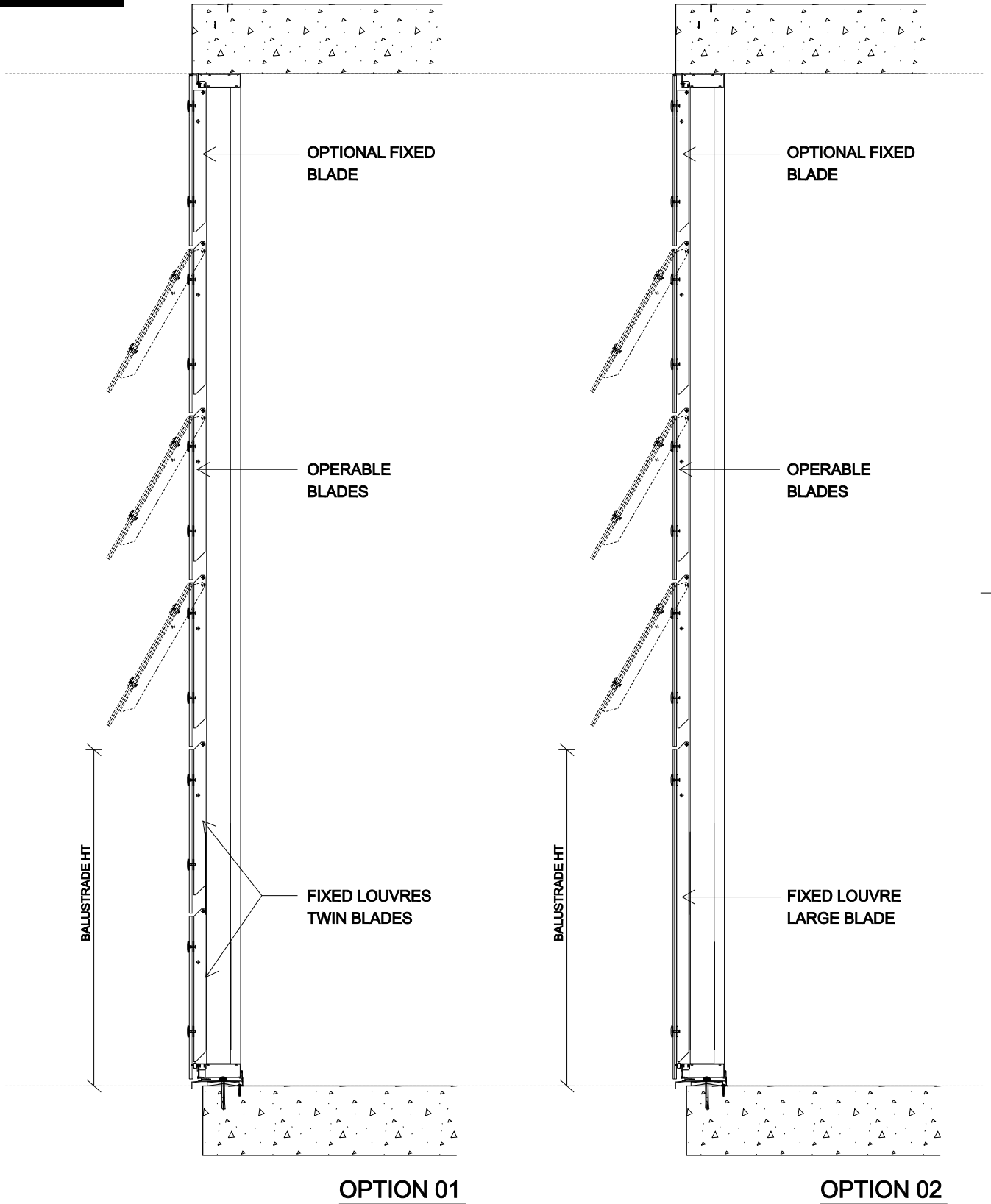
## MOTOR OPTIONS

**LF550 LOUVRE SYSTEM**



[www.ebsa.com.au](http://www.ebsa.com.au)

# LF550



## BALUSTRADE OPTIONS

**LF550 LOUVRE SYSTEM**



[www.ebsa.com.au](http://www.ebsa.com.au)