

6000TRSI-AUD

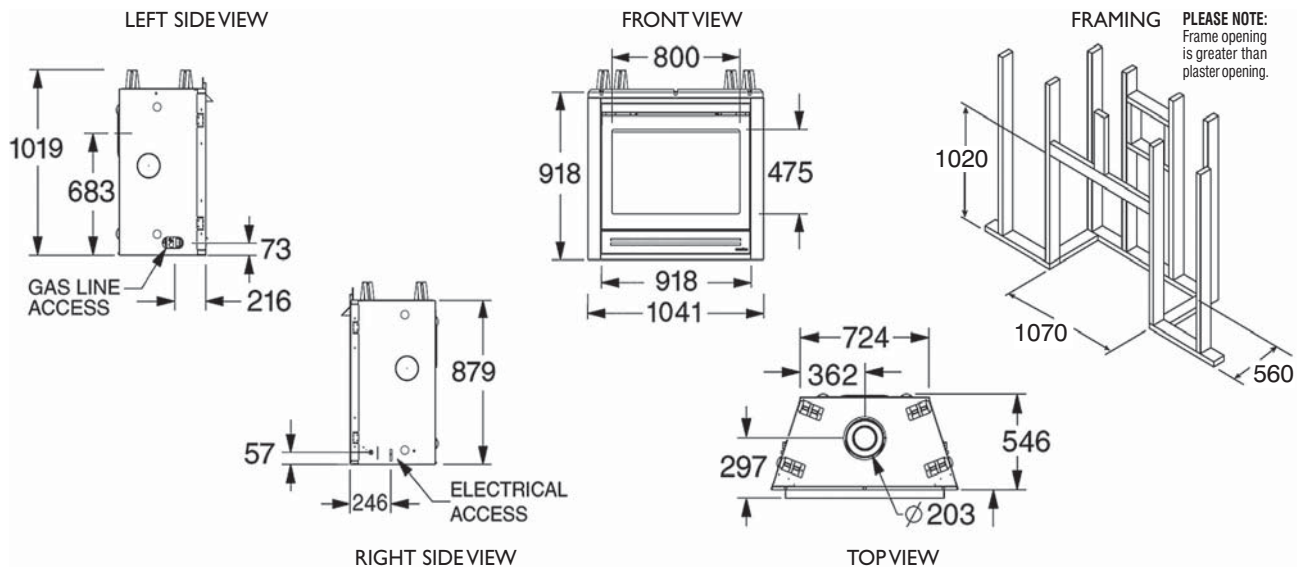
FEATURES

- IntelliFire PLUS Ignition System
- Top or Rear Venting Options
- Ceramic Fibre CampFire Style Logs
- 27 - 38 Mj/h Input
- Variable Valve
- Balanced Flue Technology
- Energy Saving 79% Efficiency
- Sealed Combustion Chamber
- Standard Black Front, Hood & Mesh
- 3 Metre Cord with Plug
- 160 CMF Fan with Thermal Sensor and Rheostat
- Multi-function Remote Control
- App No: GSCS20164

BENEFITS

- Installation Versatility
- The Most Realistic Burn Available
- Generous Flames
- Adjustable Flame & Heat Output
- Works in Negative Pressure Situations & No Cold Drafts
- No Effect on Indoor Air Quality
- Enhanced Realism and Safety
- Easy Electrical Hookup
- Effective Heat Circulation
- Ultimate in Convenience
- Safety Tested

SPECIFICATIONS FOR TIMBER INSTALLATION



MODEL	HEIGHT		FRONT WIDTH		BACK WIDTH		DEPTH		VIEWING AREA	mjh INPUT	kWh OUTPUT
	Actual	Framing	Actual	Framing	Actual	Framing	Actual	Framing			
6000TRSI-AUD	1019	1020	1041	1070	724	1070	546	560	800 x 475	NG 36 LPG 34	NG 7.9 LPG 7.5

Dimensions above are in millimetres and for reference only. We recommend measuring individual units at installation. Refer to installation manual for detailed specifications on installing this product. Heat & Glo reserves the right to update units periodically. The flame and ember appearance may vary based on the type of fuel burned and the venting configuration used.

6000 SERIES

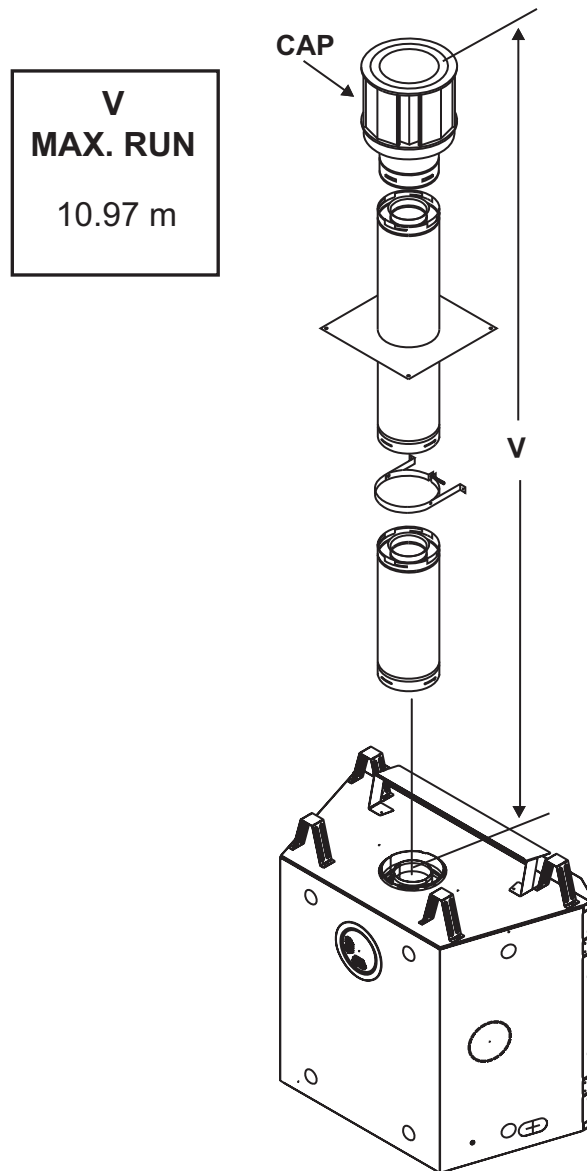
Specifications subject to change, contact Jetmaster prior to commencement.

6000TRSI-AUD

Straight Up Vertical Flue System

Figure 7.6 shows straight up vertical flue system approved for use on this model.

If the heater installation requires a vertical flue exceeding 4.5 m above the unit with no horizontal flue or elbows a vertical flue restrictor must be installed.



TRSI VENTING OPTIONS - 1

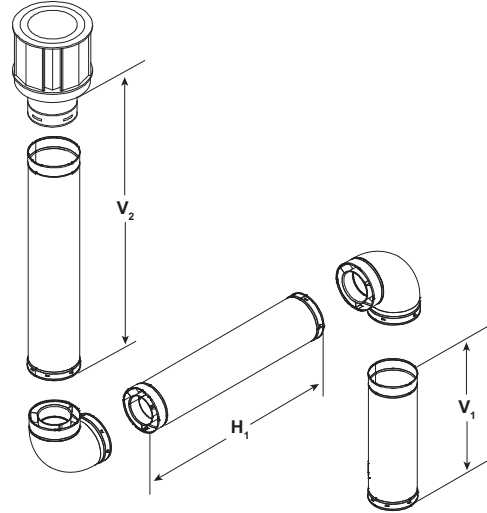
Specifications subject to change, contact Jetmaster prior to commencement.

6000TRSI-AUD

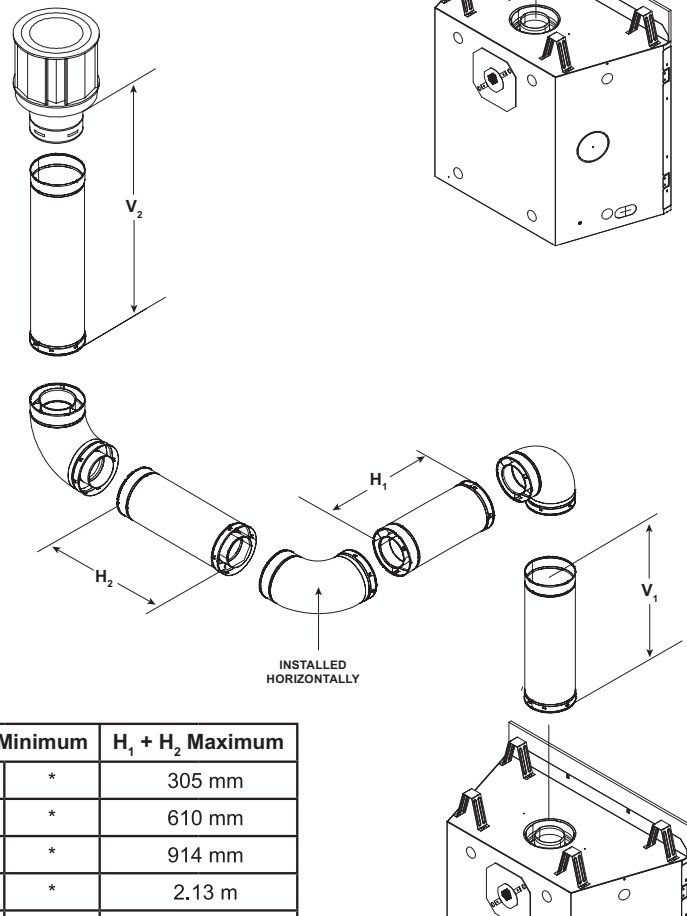
Top Vent - Vertical Termination

Two Elbows

V_1	H_1 Maximum	V_2	$V_1 + V_2$ Min.	
Elbow only	610 mm	*	*	*
152 mm	914 mm	*	*	*
304 mm	1.22 m			
610 mm	2.44 m	*	*	*
914 mm	3.66 m	*	*	*
1.22 m	4.88 m	*	*	*
$V_1 + V_2 + H_1 = 10.97$ m Maximum *No specific restrictions on this value EXCEPT $V_1 + V_2 + H_1$ cannot exceed 10.97 m				



Three Elbows



V_1	$H_1 + H_2$	V_2	$V_1 + V_2$ Minimum		$H_1 + H_2$ Maximum
Elbow only	305 mm	*	*	*	305 mm
152 mm	610 mm	*	*	*	610 mm
305 mm	914 mm	*	*	*	914 mm
610 mm	2.13 m	*	*	*	2.13 m
914 mm	2.74 m	*	*	*	2.74 m
1.22 m	3.66 m	*	*	*	3.66 m
$H_1 + H_2 = 3.66$ m Maximum		$V_1 + V_2 + H_1 + H_2 = 9.75$ m Maximum			

TRSI VENTING OPTIONS - 2

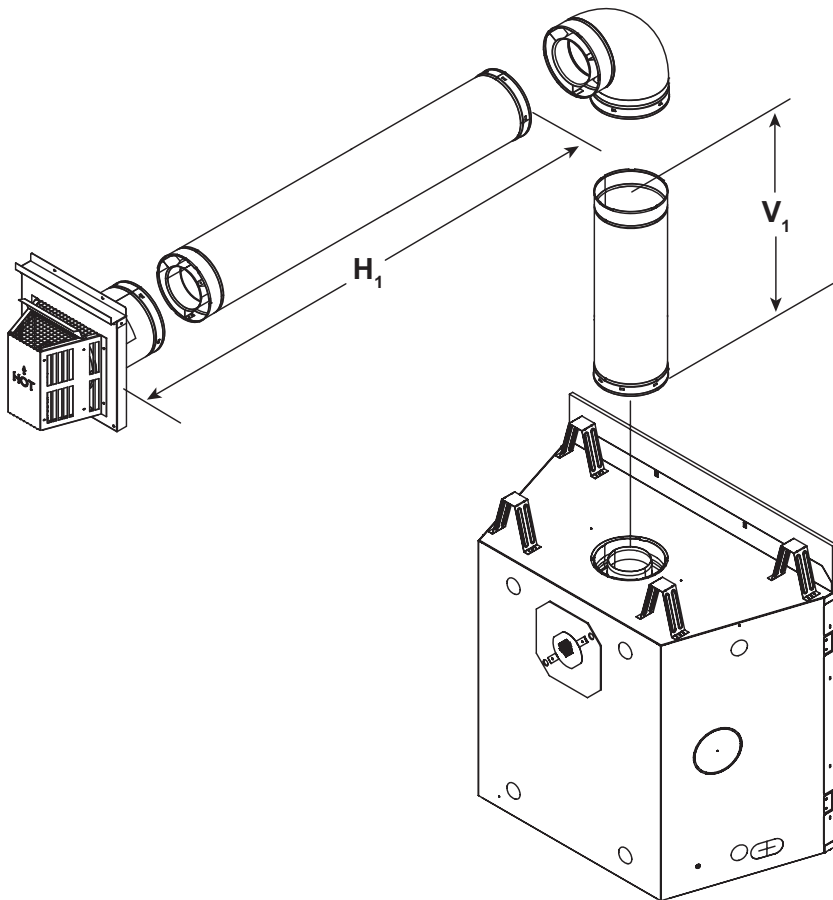
6000TRSI-AUD

Top Vent - Horizontal Termination

One Elbow

V ₁ Minimum	H ₁ Maximum
Elbow only	Not Allowed
152 mm	610 mm
305 mm	1.22 m
610 mm	2.13 m
914 mm	3.35 m
1.22 m	4.88 m
1.52 m	5.79 m
V ₁ + H ₁ = 7.32 m Maximum	

Note: For corner installations: A 152 mm section of straight pipe may need to be attached to the appliance before a 90° elbow, to allow the vent pipe to clear the top standoffs.



TRSI VENTING OPTIONS - 3

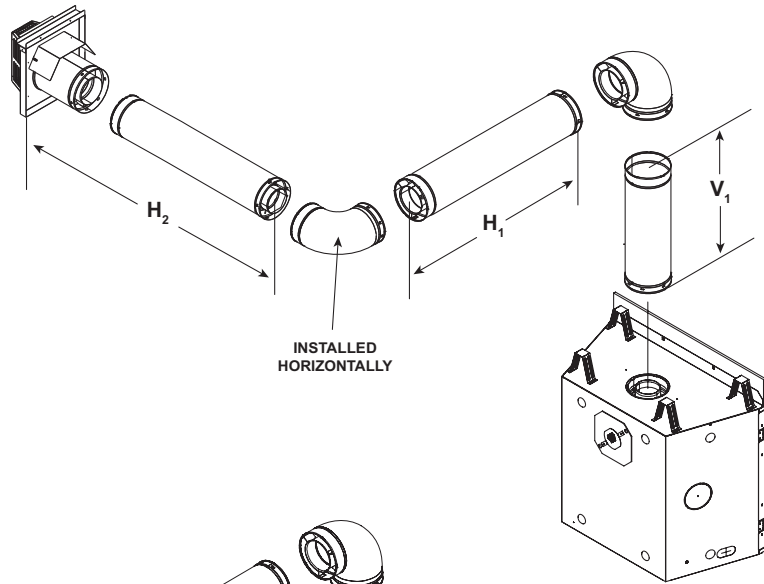
6000TRSI-AUD

Top Vent - Horizontal Termination (continued)

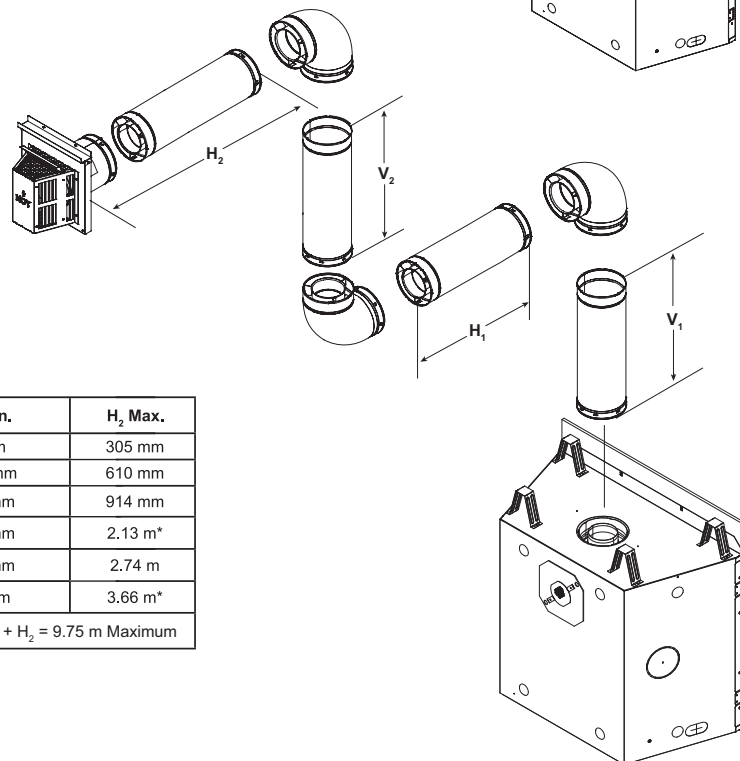
Two Elbows

Note: For corner installations: A 152 mm section of straight pipe may need to be attached to the appliance before a 90° elbow, to allow the vent pipe to clear the top standoffs.

V_1 Minimum	$H_1 + H_2$ Maximum
Elbow only	Not allowed
152 mm	305 mm
305 mm	610 mm
610 mm	1.83 m
914 mm	3.05 m
1.22 m	4.26 m
1.52 m	4.88 m
$V_1 + H_1 + H_2 = 10.36$ m Maximum	
$H_1 + H_2 = 4.88$ m Maximum	



Three Elbows



V_1 Min.	H_1 Max.	V_2 Min.	H_2 Max.
Elbow only	305 mm	0 mm	305 mm
152 mm	610 mm	152 mm	610 mm
305 mm	914 mm	305 mm	914 mm
610 mm	2.13 m*	610 mm	2.13 m*
914 mm	2.74 m	914 mm	2.74 m
1.22 m	3.66 m*	1.22 m	3.66 m*
$*H_1 + H_2 = 3.66$ m Maximum		$V_1 + V_2 + H_1 + H_2 = 9.75$ m Maximum	

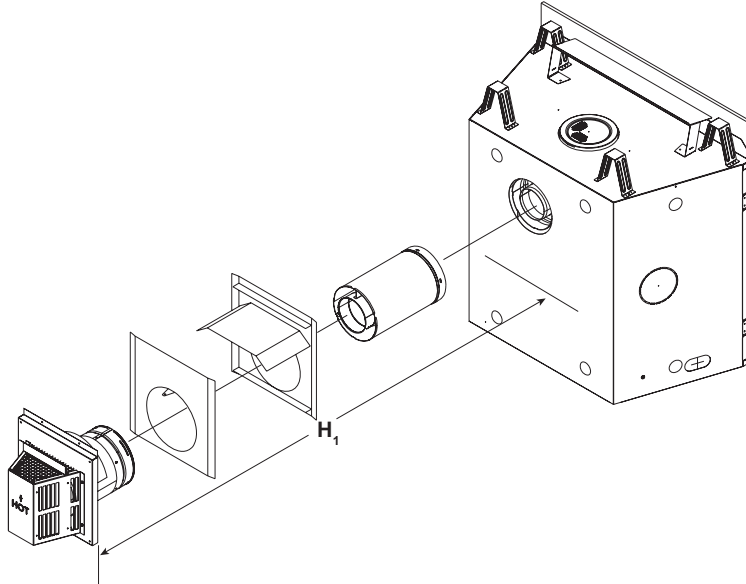
TRSI VENTING OPTIONS - 4

6000TRSI-AUD

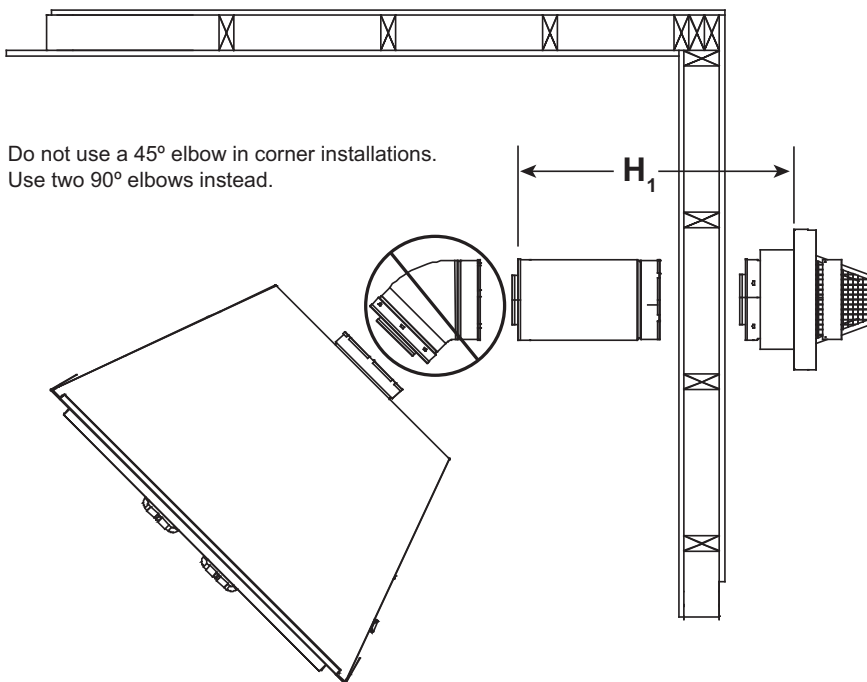
Rear Vent - Horizontal Termination

No Elbow

H ₁ Minimum	H ₁ Maximum
165 mm	457 mm



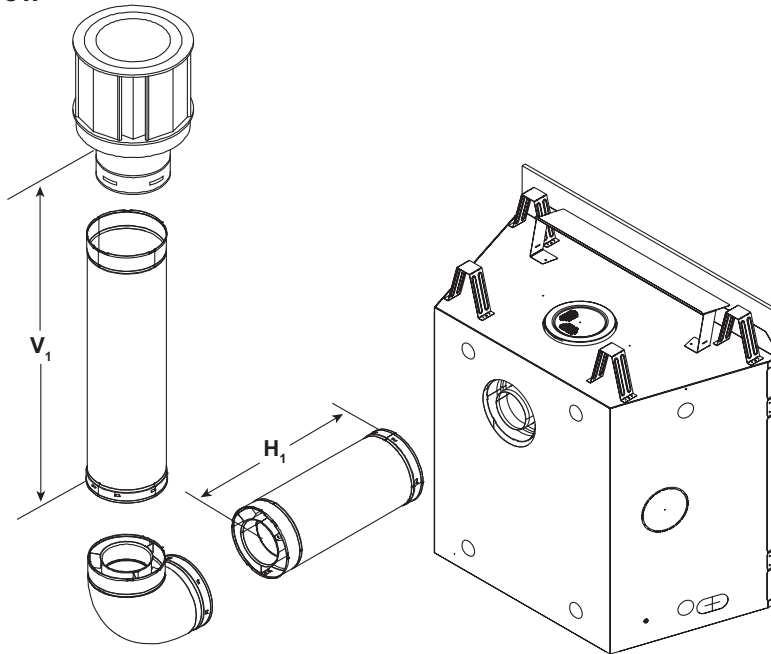
One 45° Elbow



6000TRSI-AUD

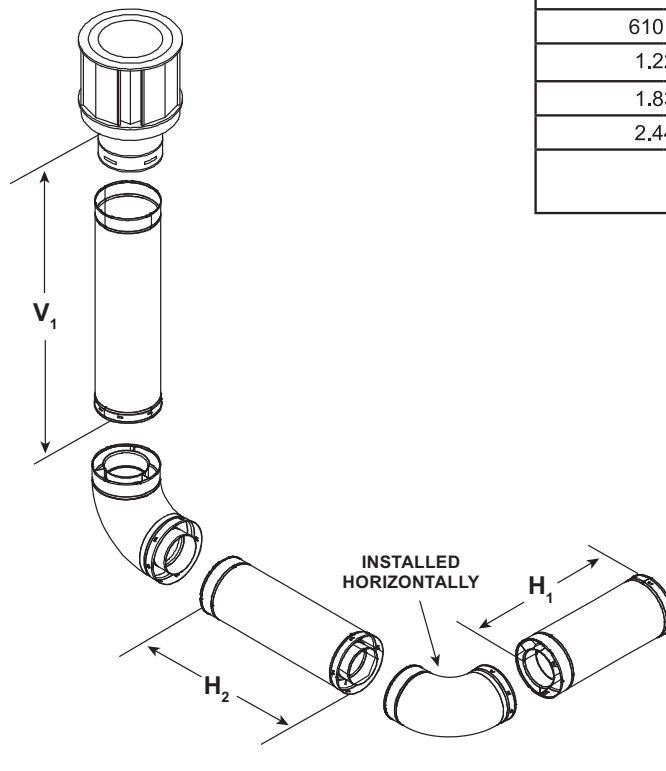
Rear Vent - Vertical Termination

One Elbow



V_1 Minimum	H_1 Maximum
305 mm	610 mm
610 mm	610 mm
914 mm	1.22 m
1.22 m	1.83 m
1.52 m	2.44 m
$V_1 + H_1 = 9.75$ m Maximum $H_1 = 2.44$ m Maximum	

Two Elbows



V_1 Minimum	$H_1 + H_2$ Maximum
914 mm	Back to Back 90° Elbows
610 mm	1.83 m
1.22 m	2.74 m
1.83 m	3.66 m
2.44 m	4.57 m
$V_1 + H_1 = 9.75$ m Maximum $H_1 + H_2 = 4.57$ m Maximum	

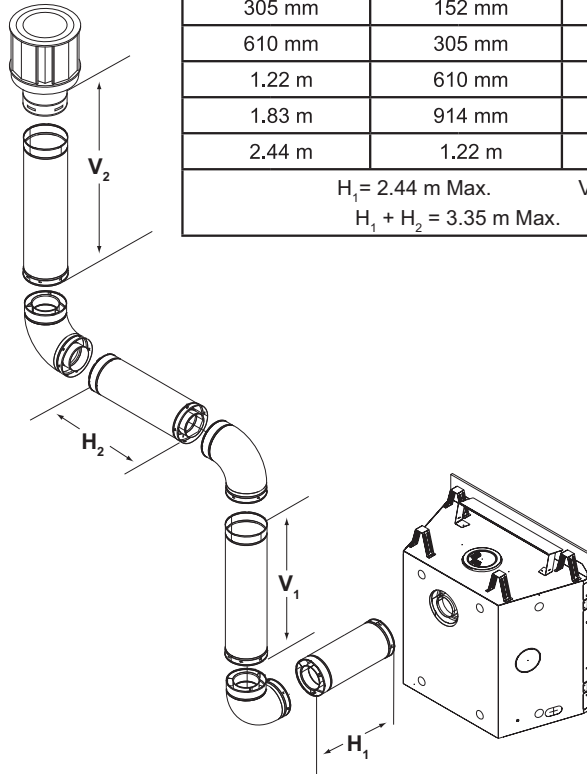
TRSI VENTING OPTIONS - 6

Specifications subject to change, contact Jetmaster prior to commencement.

6000TRSI-AUD

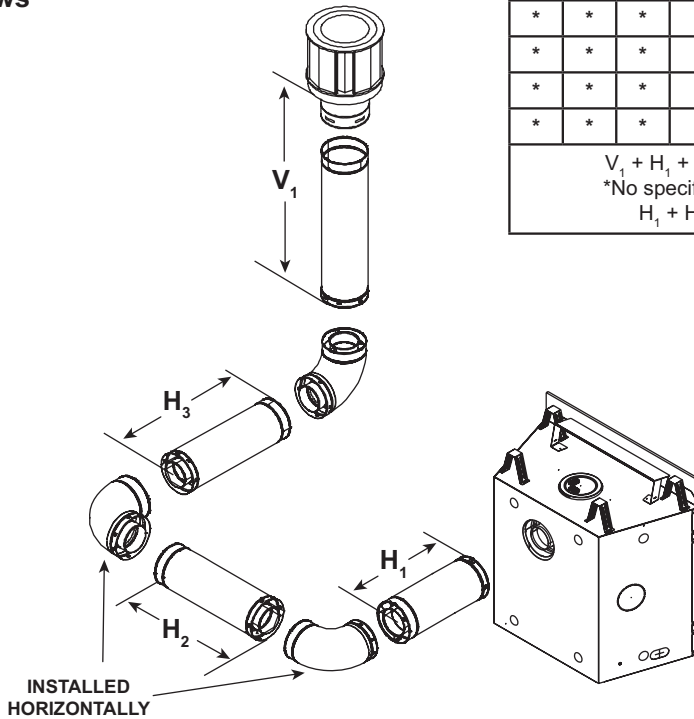
Rear Vent - Vertical Termination (continued)

Three Elbows



H ₁ Maximum	V ₁ Minimum	H ₂	H ₁ + H ₂ Maximum	V ₂
305 mm	152 mm	305 mm	610 mm	*
610 mm	305 mm	1.22 m	914 mm	*
1.22 m	610 mm	1.83 m	1.83 m	*
1.83 m	914 mm	2.44 m	3.35 m	*
2.44 m	1.22 m	2.44 m	3.35 m	*
H ₁ = 2.44 m Max. V ₁ + V ₂ + H ₁ + H ₂ = 9.75 m Max. H ₁ + H ₂ = 3.35 m Max. V ₁ + V ₂ = 6.09 m Max.				

Three Elbows



H ₁	H ₂	H ₃	V ₁ Minimum	H ₁ + H ₂ + H ₃ Maximum
*	*	*	2.44 m	1.83 m
*	*	*	2.74 m	2.13 m
*	*	*	3.05 m	2.44 m
*	*	*	3.05 m	2.44 m
V ₁ + H ₁ + H ₂ + H ₃ = 10.97 m Maximum *No specific restrictions on this value EXCEPT H ₁ + H ₂ + H ₃ = 2.44 m Maximum				

TRSI VENTING OPTIONS - 7

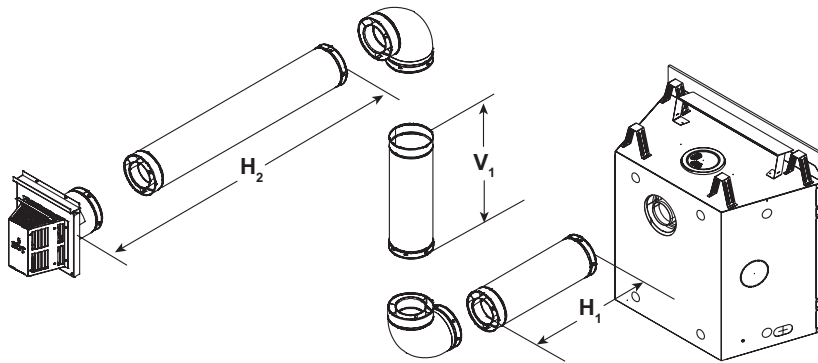
Specifications subject to change, contact Jetmaster prior to commencement.

6000TRSI-AUD

Rear Vent - Horizontal Termination (continued)

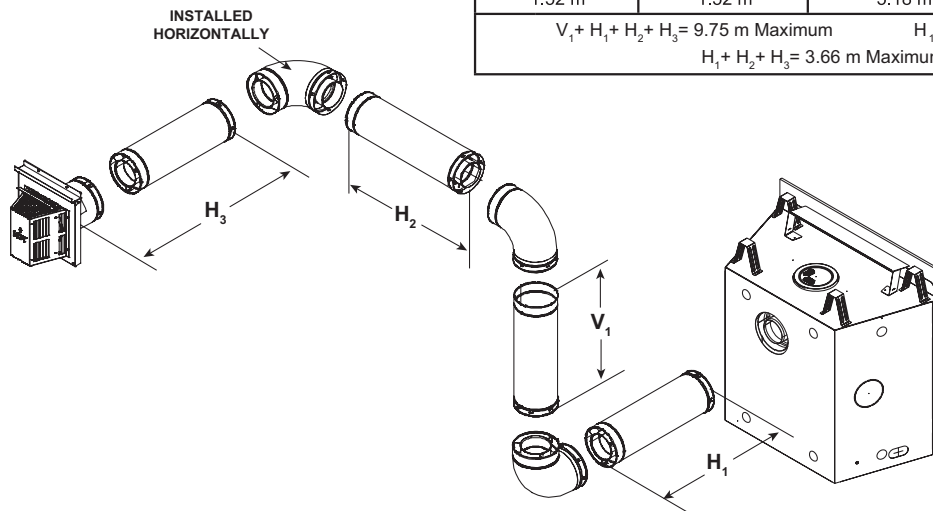
Two Elbows

H ₁ Maximum	V ₁ Minimum	H ₂	H ₁ + H ₂ Maximum
152 mm	Back to Back 90° Elbows	305 mm	457 mm
305 mm	152 mm	457 mm	762 mm
610 mm	305 mm	610 mm	1.22 m
914 mm	610 mm	914 mm	1.83 m
1.22 m	914 mm	2.13 m	3.05 m
1.52 m	1.22 m	3.35 m	4.57 m
1.52 m	1.52 m	3.35 m	4.57 m*
V ₁ + H ₁ + H ₂ = 10.97 m Maximum H ₁ = 1.52 m Maximum V ₁ = 6.09 m Maximum *H ₁ + H ₂ = 4.57 m Maximum			



Three Elbows

H ₁ Maximum	V ₁ Minimum	H ₂ + H ₃	H ₁ + H ₂ + H ₃ Max.
0 mm	Back to Back 90° Elbows	305 mm	305 mm
305 mm	152 mm	457 mm	762 mm
610 mm	305 mm	610 mm	1.22 m
914 mm	610 mm	914 mm	1.83 m
1.22 m	914 mm	2.13 m	3.05 m
1.52 m	1.22 m	3.66 m	4.57 m
1.52 m	1.52 m	5.18 m	6.09 m
V ₁ + H ₁ + H ₂ + H ₃ = 9.75 m Maximum H ₁ = 914 mm Maximum H ₁ + H ₂ + H ₃ = 3.66 m Maximum			



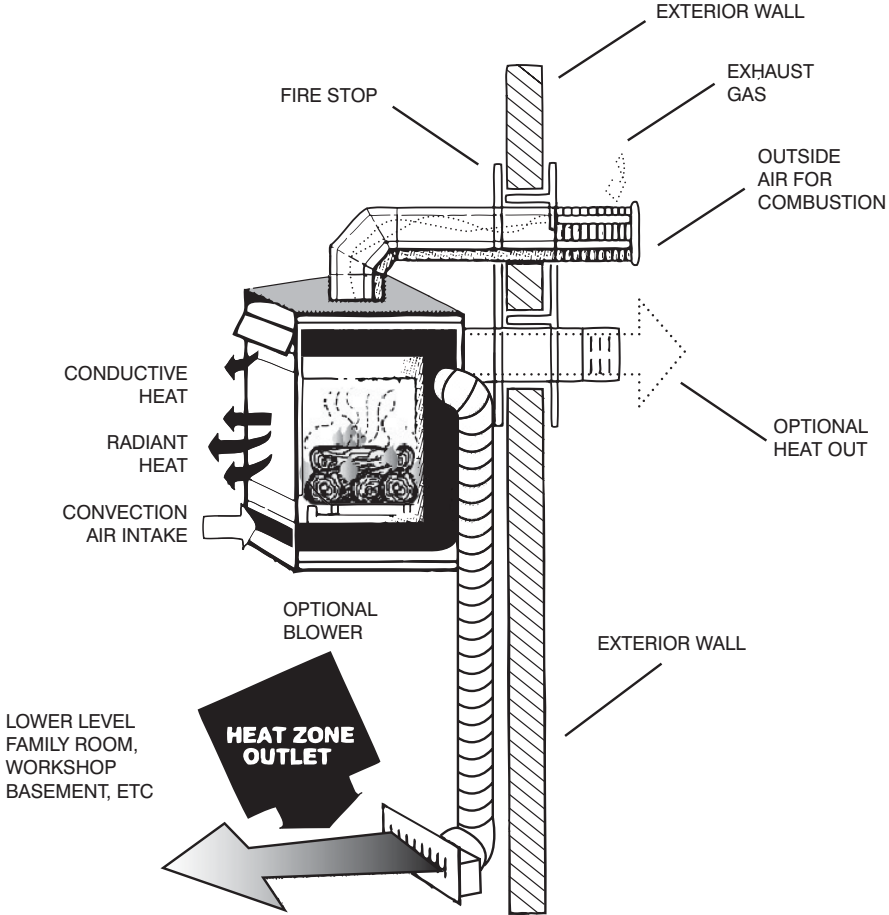
TRSI VENTING OPTIONS - 8

Specifications subject to change, contact Jetmaster prior to commencement.

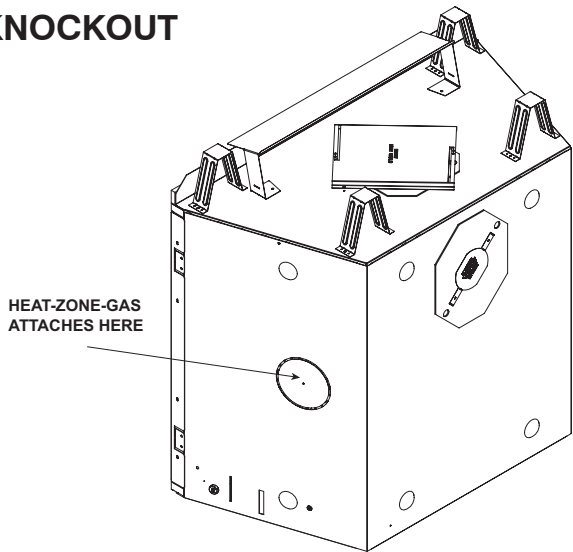
6000TRSI-AUD

HEAT ZONE VENTING

(UPPER-LOWER)



HEAT ZONE KNOCKOUT



6000 TRSI-AUD - HEATING DUCT

Specifications subject to change, contact Jetmaster prior to commencement.