

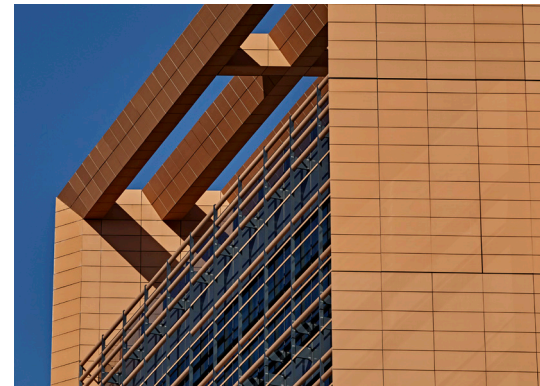
AUSTRALASIA

PROJECT NEWS



vitradual™

NON-COMBUSTIBLE CASSETTE CLADDING / MANUFACTURED BY FAIRVIEW



AUSTRALIAN TECHNOLOGY PARK

NAME:	AUSTRALIAN TECHNOLOGY PARK
LOCATION:	EVELEIGH, SYDNEY, NSW
ARCHITECT:	SISSON ARCHITECTS
INSTALLER:	BRIGHTON AUSTRALIA
PRODUCT:	VITRADUAL
FINISH:	CHARCOAL MATTE, ETERNAL SILVER SATIN

The Australian Technology Park's redevelopment was designed by Sisson Architects, with the vision of becoming one of Australia's leading smart neighbourhoods.

Featuring Vitradual, this precinct emanates a sense of excitement, innovation, and flexibility.



FAIRVIEW™

DEFINING ARCHITECTURE SINCE 1963

AUSTRALASIA
P / +61 2 6352 2355
helpdesk@fv.com.au

UNITED KINGDOM
P / +44(0)1278 428 245
enquiries@valcan.co.uk

NEW ZEALAND
P / +09-439 4357
info@paneltec.co.nz

WWW.FV.COM.AU



vitradoal™

NON-COMBUSTIBLE CASSETTE CLADDING / MANUFACTURED BY FAIRVIEW