

 **Wilsonart**<sup>®</sup>

Wilsonart Asia-Pacific by **AICA** Group



Laminate



**QUALITY**  
**STYLE**  
**TECHNOLOGY**



Decorative Building Products

[hvgbuilding.com.au](http://hvgbuilding.com.au) | 1300 854 166

# WILSONART | HPL LAMINATE

As one of the most innovative decorative surface materials on the market, Wilsonart HPL (High Pressure Laminate) offers long-lasting beauty and reliability. Wilsonart HPL helps architects, designers, and fabricators exceed client's expectations with extensive selections, quality and economical value. Featuring realistic decors that provide an exceptional alternative to engineered stones and solid surfaces.

Our on-trend decors include some of the most popular concretes and stones, woodgrains and colours, which are also capable of being post formed with very tight radiuses giving a modern square edge.

Our specialty laminates offer surface options uniquely suited to the challenges of performance interiors. The Traceless Collection with fingerprint resistant technology and the ultra strong AEON deliver remarkable durability and functionality.

HPL laminates are suitable for horizontal and vertical use.





# THE WILSONART CONTEMPORARY COLLECTION

HPL Laminate

# AEON | ENHANCED PERFORMANCE LAMINATE

AEON laminate, a surface which is dramatically more durable and keeps its good looks longer. AEON enhanced performance outperforms traditional laminate on wear resistance, as well as scratch and scuff resistance for a surface that is 3-5x stronger than standard laminates with similar finishes.

Perfect for residential and commercial bench tops, cabinetry, vertical wall panels and doors, matching digitally printed ABS edging allows for a seamless finish. Look out for the AEON label across our decors.

**AEON** finishes are named and colour coded throughout.

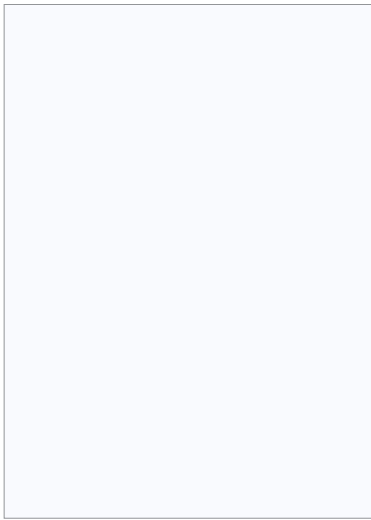


# THE TRACELESS COLLECTION

Discover a silky smooth and luxurious yet durable surface with impact and fingerprint resistant properties, perfect for applications where style is a must.

It does not stain, is easy to clean as well as heat resistant, making it the only choice for any high use areas.

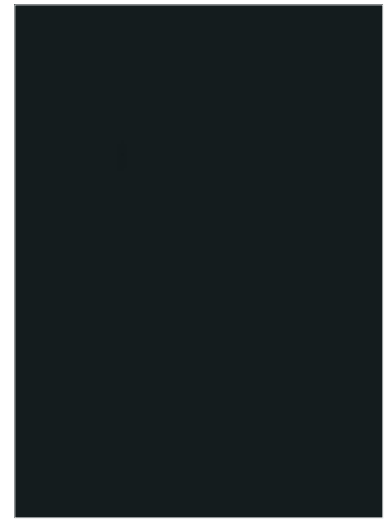
The Traceless Collection is the perfect surface solution for designers requiring a surface that offers the highest standards. This unique technology ensures that finger marks are almost never seen, thereby substantially reducing the effort required for care and maintenance.



COOL WHITE 0188 - TP



ANTHRACITE 10630 - TP

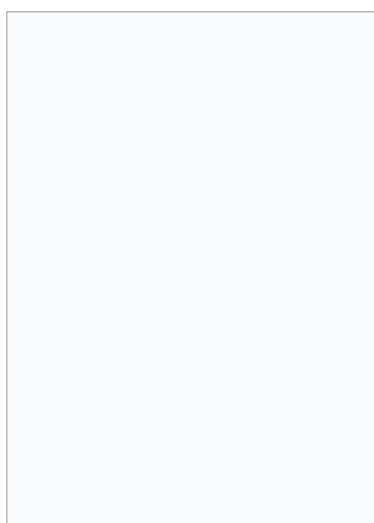


BLACK 0901 - TP

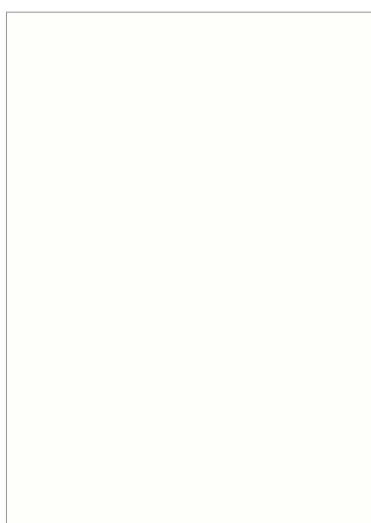


Traceless Premium (TP) – Ideal for both vertical and horizontal applications.

Traceless Standard (TS) – Ideal for vertical applications.



ARCTIC WHITE 0179 - TS



SNOW WHITE 9417 - TS



PORT D14 - TS



MONocreTE 3563 - TS

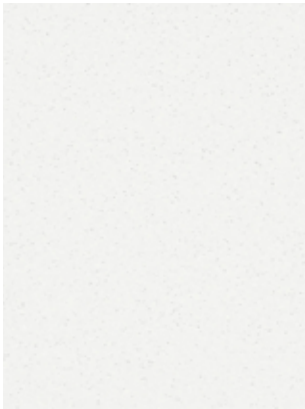
\*As the colours are representations only, contact us on 1300 854 166 to order your free sample for a perfect colour match.

# CONCRETE & STONE | RAW BEAUTY

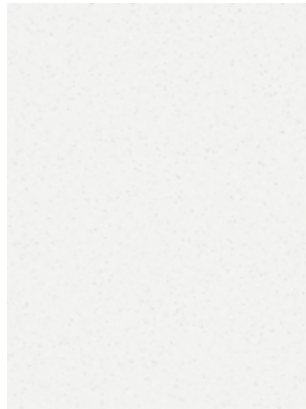
Add a sense of gravity and refinement to your surfaces with Wilsonart's stone and concrete inspired decors, as well as modern patterns, available in a variety of elegant and earthy finishes.

Combining the raw beauty of concrete or stone with the advantages of HPL laminate means it is easy to clean and maintain, but with a finish that is both realistic in look and touch.

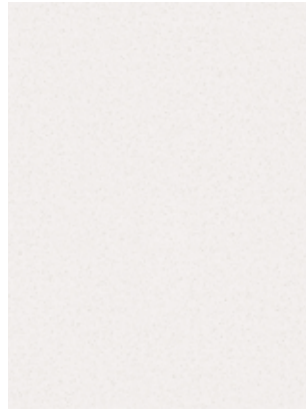
\*As the colours are representations only, contact us on 1300 854 166 to order your free sample for that perfect colour match.



ARCADIA XM083 01 **AEON**



ARCADIA XM083 07 **AEON**



ARCTIC SNOW P394 CA



ARCTIC SNOW P394 GL



COTE D'AZUR 1886  
21 **AEON**



COTE D'AZUR 1886  
38



ORGANIC COTTON 4945  
21 **AEON**



CARRERA ROYAL 8117 S



BLEACHED CONCRETE  
8171 C



CALCUTTA MARBLE 4925  
01 **AEON**



CALCUTTA MARBLE 4925  
21 **AEON**

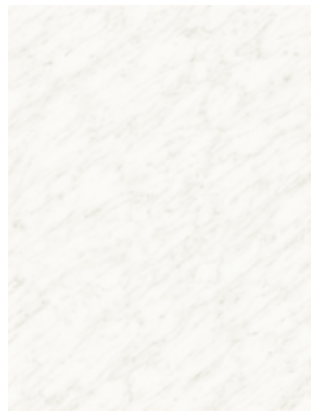


ARCTIC TUNDRA P396 VL

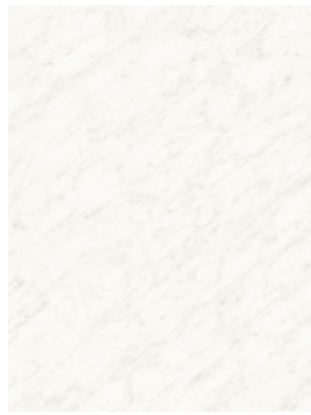




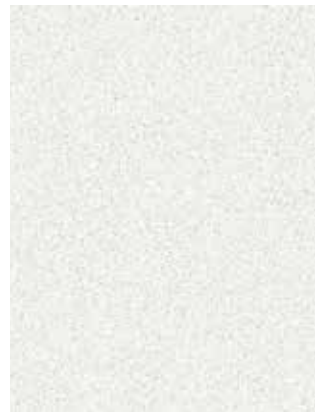
FROSTY WHITE MIRAGE  
4873 20



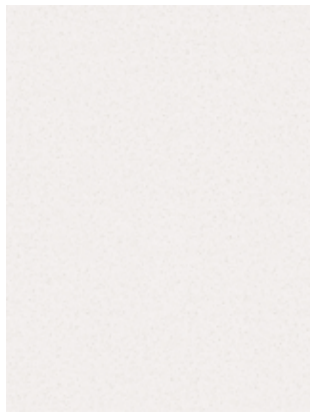
BIANCO CARRARA  
XM086 01 **AEON**



BIANCO CARRARA  
XM086 07 **AEON**



SANTORINI XM082  
01 **AEON**



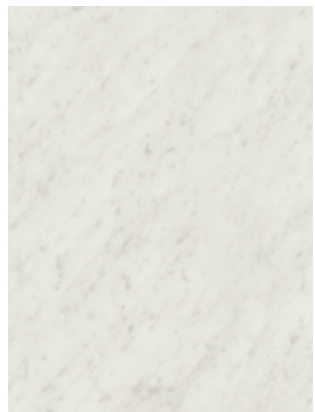
ARCTIC SNOW P394 VL



MARMO BIANCO 1885  
21 **AEON**



MARMO BIANCO 1885 38



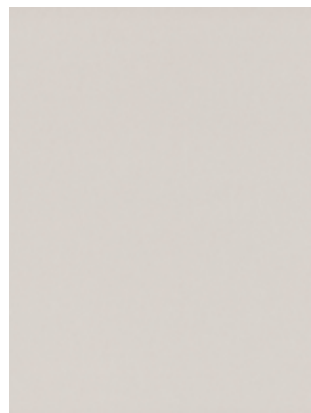
WHITE CARRARA 4924  
07 **AEON**



ARCTIC ICE P395 VL



ARCTIC ICE P395 GL



FRESH MIST P271 CA



SERRANIA 1890 21 **AEON**



CARACATTA 8150 S



WHITE TIGRIS 4783 60



WHITE TIGRIS 4783  
01 **AEON**



SIERRA CASCADE 5005  
21 **AEON**



MONT BLANC P1009 VL



MONT BLANC P1009 IM



MANHATTAN GREY 8146 C



ARABESCATO MARBLE  
P1000 VL



BENJAMIN GREY 1887  
21 **AEON**



CITYSCAPE LOFT P1010 VL



TEXTUS POIVRE 8144 NM



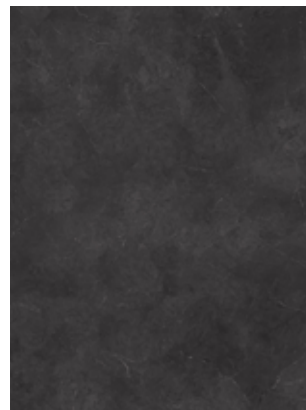
CONCRETE 8170 C



OILED SOAPSTONE 4882 38



OILED SOAPSTONE 4882  
07 **AEON**



BLACK ALICANTE 4926  
01 **AEON**



BLACK ALICANTE 4926  
07 **AEON**



SAINT LAURENT MARBLE  
P1008 IM



SAINT LAURENT MARBLE  
P1008 VL



TYPHOON BORDEAUX  
CREME P1005 VL



PEARL SOAPSTONE  
D4886 38



PEARL SOAPSTONE  
D4886 C



SATIN STAINLESS 4830  
07 **AEON**



MANHATTAN SLATE 8147 C



PALISANDRO BROWN  
8151 S



ANDORRA SHADOW 4998  
07 **AEON**



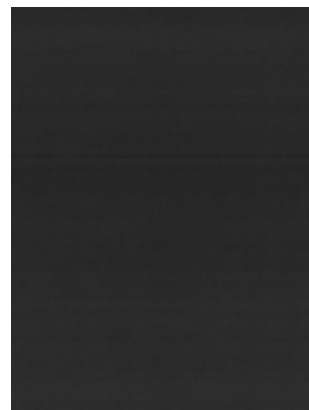
LIGHTNING GRAPHITE  
13077 07 **AEON**



INUKSHUK CARBON P346  
CA



JET MARBLE 13081  
07 **AEON**



GRAPHITE NEBULA 4623 60



CINDER SLATE P1007 VL



Wilsonart HPL - Manhattan Grey C  
Wilsonart HPL & LPM - New Age Oak AEON & XM

# WOODGRAIN | REALISTIC AND TACTILE

Introduce a soft organic touch to your interiors with the delightful richness and warmth of natural woodgrain decors and textures, in a selection of bright, cosy, and subdued tones. The collections and finishes are not just

about how the product looks but also about the tactile properties. Inspired by nature and manufactured with durability in mind, allow for a seamless transition between inside and outside.



ASHBEE OAK 17000  
57 **AEON**



WHITEWASH OAK 4164 WM



PEWTER OAK 4288 WM



NATURAL ASH 4280 WM



Wilsonart HPL - Knotty Alder - 4422

\*As the colours are representations only, contact us on 1300 854 166 to order your free sample for that perfect colour match.



PAINTED ASH 4290 WM



LANDMARK WOOD 7981  
12 **AEON**



NEW AGE OAK 7938  
12 **AEON**



BRAZILWOOD 7946  
12 **AEON**



KNOTTY ALDER 4422 WM



RASPUTIN OAK 4419 NM



WALNUT HEIGHTS 7965  
12 **AEON**



CONGRATTI WOOD 4179  
WM



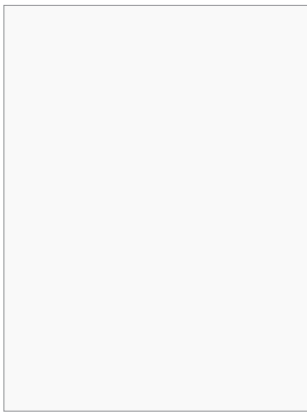
WENGE SAMBESSI 4139 WM

# COLOUR | POWERFUL AND SUBTLE

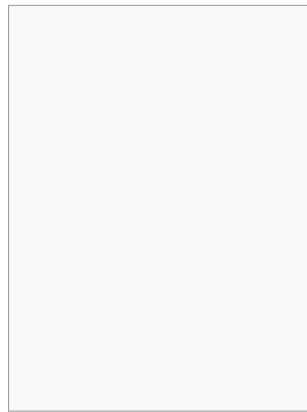
Bring emotion to any surface with Wilsonart neutrals and colours. Stimulate your senses with vivid seasonal hues, cool shades of grey and harmonic neutrals.

Colour has a profound influence on a space and the people in it. Always focused on bringing the latest trends and finishes to our decors, creating your perfect mood is always our top priority.

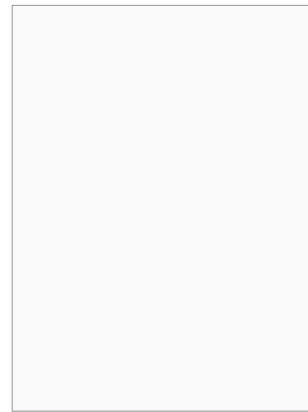
\*As the colours are representations only, contact us on 1300 854 166 to order your free sample for a perfect colour match.



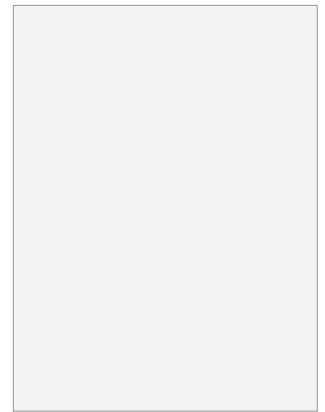
DESIGNER WHITE D354  
01 **AEON**



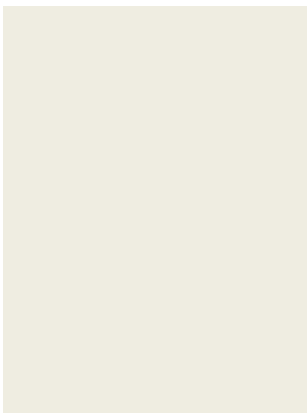
DESIGNER WHITE D354  
21 **AEON**



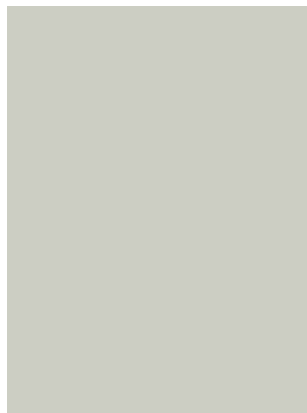
DESIGNER WHITE D354 60



WHITE LACE 15025  
21 **AEON**



FROSTY WHITE 1573  
21 **AEON**



FASHION GREY D381  
21 **AEON**



YELLOW D483 60



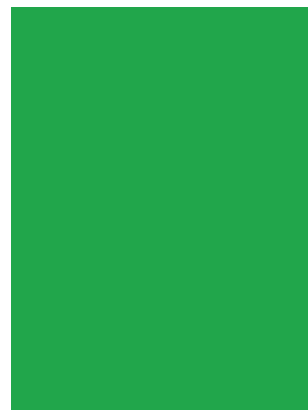
BRICK B120 M



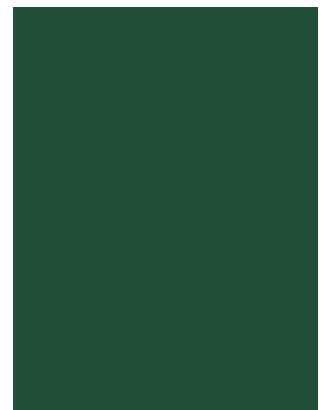
ORANGE 0335 60



REGIMENTAL RED D12 60



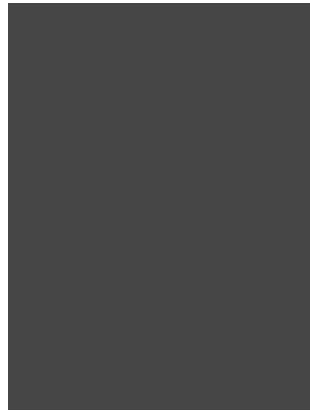
BUTTON 0600 20



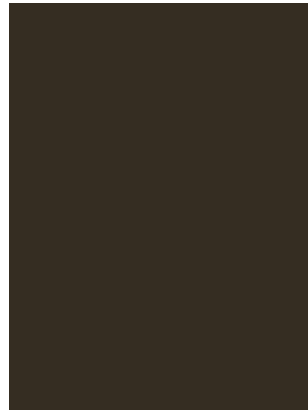
MIDORI D421 60



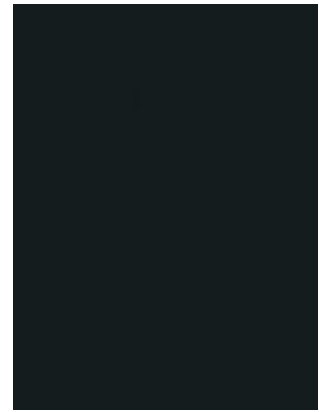
ULTRAMARINE 9497 60



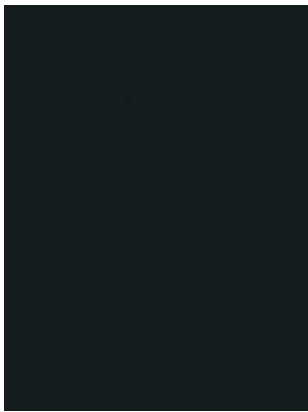
EBONY 10622 60



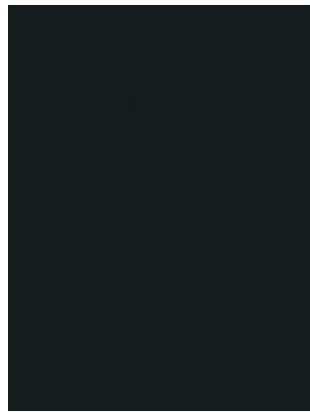
SLATE GREY D91 60



BLACK 1595 01 **AEON**



BLACK 1595 60



BLACK 1595 90



Designer: @KoDesigned – Louise Kolfosche  
Wilsonart HPL - Monocrete 3563 - TS & Midori D421 - 60

# HPL LAMINATE | GUIDE

CODE	DECOR NAME	DECOR CODE	FINISH	SHEET SIZE (mm)
026863	Andorra Shadow	4998	07 AEON	3660 x 1530
026862	Anthracite	10630	Traceless TP	3650 x 1320
034935	Arabescato Marble	P1000	VL	3650 x 1525
020021	Arcadia	XM083	01 AEON	3660 x 1530
020022	Arcadia	XM083	07 AEON	3660 x 1530
034949	Arctic Ice	P395	VL	3650 x 1525
034948	Arctic Ice	P395	GL	3650 x 1525
034217	Arctic Snow	P394	VL	3650 x 1525
034962	Arctic Snow	P394	CA	3650 x 1525
034963	Arctic Snow	P394	GL	3650 x 1525
034973	Arctic Tundra	P396	VL	3650 x 1525
023001	Arctic White	0179	Traceless TS	3650 x 1320
026864	Ashbee Oak	17000	57 AEON	3660 x 1530
026867	Benjamin Grey	1887	21 AEON	3660 x 1530
020027	Bianco Carrara	XM086	01 AEON	3660 x 1530
020028	Bianco Carrara	XM086	07 AEON	3660 x 1530
025017	Black	0901	Traceless TP	3650 x 1320
016073	Black	1595	01 AEON	3660 x 1530
016074	Black	1595	60	3660 x 1530
016075	Black	1595	90	3660 x 1530
016077	Black Alicante	4926	01 AEON	3660 x 1530
016078	Black Alicante	4926	07 AEON	3660 x 1530
036033	Bleached Concrete	8171	C	3650 x 1320
026870	Brazilwood	7946	12 AEON	3660 x 1530
035527	Brick	B120	M	3650 x 1220
026872	Button	0600	20	3650 x 1320
016094	Calcutta Marble	4925	01 AEON	3660 x 1530
026875	Calcutta Marble	4925	21 AEON	3660 x 1530
026877	Caracatta	8150	S	3650 x 1220
017394	Carrera Royal	8117	S	3650 x 1220
035015	Cinder Slate	P1007	VL	3650 x 1525
034215	Cityscape Loft	P1010	VL	3650 x 1525
036034	Concrete	8170	C	3650 x 1320
030560	Congratti Wood	4179	WM	3650 x 1220
026880	Cool White	0188	Traceless TP	3650 x 1320
026879	Cote D'Azur	1886	21 AEON	3660 x 1530
024162	Cote D'Azur	1886	38	3660 x 1530
016125	Designer White	D354	01 AEON	3660 x 1530
026882	Designer White	D354	21 AEON	3660 x 1530
016123	Designer White	D354	60	3660 x 1530
016129	Ebony	10622	60	3650 x 1320
026885	Fashion Grey	D381	21 AEON	3660 x 1530
035044	Fresh Mist	P271	CA	3650 x 1525
026890	Frosty White	1573	21 AEON	3660 x 1530
016145	Frosty White Mirage	4873	20	3650 x 1320
016151	Graphite Nebula	4623	60	3660 x 1530
035062	Inukshuk Carbon	P346	CA	3650 x 1525
024257	Jet Marble	13081	07 AEON	3660 x 1530



CODE	DECOR NAME	DECOR CODE	FINISH	SHEET SIZE (mm)
026902	Knotty Alder	4422	WM	3650 x 1220
026903	Landmark Wood	7981	12 AEON	3660 x 1530
024260	Lightning Graphite	13077	07 AEON	3660 x 1530
036035	Manhattan Grey	8146	C	3650 x 1320
036036	Manhattan Slate	8147	C	3650 x 1320
026908	Marmo Bianco	1885	21 AEON	3660 x 1530
024165	Marmo Bianco	1885	38	3660 x 1530
026913	Midori	D421	60	3650 x 1320
023002	Monocrete	3563	Traceless TS	3650 x 1320
035097	Mont Blanc	P1009	VL	3650 x 1525
035096	Mont Blanc	P1009	IM	3650 x 1525
024102	Natural Ash	4280	WM	3650 x 1220
026917	New Age Oak	7938	12 AEON	3660 x 1530
026921	Oiled Soapstone	4882	07 AEON	3660 x 1530
016190	Oiled Soapstone	4882	38	3660 x 1530
026922	Orange	0335	60	3650 x 1320
026924	Organic Cotton	4945	21 AEON	3660 x 1530
018907	Painted Ash	4290	WM	3650 x 1220
022261	Palisandro Brown	8151	S	3650 x 1220
016200	Pearl Soapstone	D4886	38	3660 x 1530
036037	Pearl Soapstone	D4886	C	3650 x 1320
016205	Pewter Oak	4288	WM	3650 x 1220
023003	Port	D14	Traceless TS	3650 x 1320
026930	Rasputin Oak	4419	NM	3650 x 1220
017397	Regimental Red	D12	60	3660 x 1530
020019	Santorini	XM082	01 AEON	3660 x 1530
016219	Satin Stainless	4830	07 AEON	3660 x 1530
026936	Serrania	1890	21 AEON	3660 x 1530
026937	Sierra Cascade	5005	21 AEON	3660 x 1530
016233	Slate Grey	D91	60	3660 x 1530
021118	Snow White	9417	Traceless TS	3650 x 1320
035166	St Laurent Marble	P1008	VL	3650 x 1525
035165	St Laurent Marble	P1008	IM	3650 x 1525
026943	Textus Poivre	8144	NM	3650 x 1220
034216	Typhoon Bord Creme	P1005	VL	3650 x 1525
026944	Ultramarine	9497	60	3650 x 1320
016262	Walnut Heights	7965	12 AEON	3660 x 1530
016264	Wenge Sambessi	4139	WM	3650 x 1220
016268	White Carrara	4924	07 AEON	3660 x 1530
026945	White Lace	15025	21 AEON	3660 x 1530
016273	White Tigris	4783	01 AEON	3660 x 1530
016272	White Tigris	4783	60	3660 x 1530
021087	Whitewash Oak	4164	WM	3650 x 1220
016276	Yellow	D483	60	3650 x 1320
<b>KICK BOARD</b>				
023103	Brushed Aluminium	3952	S	White Back 3650 x 1220 16mm
022968	Brushed Steel	6281	S	White Back 3650 x 1220 16mm



## SUSTAINABILITY

At HVG Decorative Building Products, we believe that it is our responsibility to do right by our environment. This means continuously striving to improve our products and processes to ensure minimal impact on the world around us.

Wilsonart strive to ensure their manufacturing and distribution processes leave the absolute minimal impact on the environment.

Their sustainability programs are ongoing and stretch across all touch points, including

distributors who are equally committed to sustainable business practices.

Wilsonart is proud to be the first adhesive manufacturer to have their low-emitting PVA and woodworking adhesives recognised by UL's GREENGUARD Certification Program for indoor air quality.

- UL 2818: GREENGUARD Certification Program for Chemical Emissions for Building Materials, Finishes and Furnishings.

## WARRANTY

Wilsonart HPL Laminates come with a 15-year warranty. For full terms and conditions, as well as specific technical and fabrication details, visit us here: [www.hvgbuilding.com.au](http://www.hvgbuilding.com.au)



Wilsonart LPM Panel - Landmark Wood - H & Fresh White - G

## HVG DECORATIVE BUILDING PRODUCTS

### 100% AUSTRALIAN OWNED

Every day we strive to be specialists in innovative, versatile and high-quality interior finishes, ensuring we encompass the very latest technology and design trends. HVG Decorative Building Products provide a smart solution for any type of interior design, be it specification, residential, or commercial.

Wilsonart®, our flagship brand is recognised as one of the global leaders in decorative engineered surfaces. We take great pride in the fact that we manufacture all our LPM panel products right here in Melbourne Australia, at HVG Manufacturing.

HOMAPAL®, Zenolite®, DIBOND® & SmartPanel® complement our portfolio creating diversity and a complete solution for any decorative surface choice.

HVG Decorative Building Products stands behind its brands and aims to provide the best practice in both service and quality. Experienced staff, state-of-the-art locations, and readily available stock enables us to provide personalised service and exciting solutions within the industry and nationwide.



Decorative Building Products

[hvgbuilding.com.au](http://hvgbuilding.com.au) | 1300 854 166



Wilsonart HPL - Organic Cotton 4945

 **Wilsonart**<sup>®</sup>

Wilsonart Asia-Pacific by **AICA** Group



**Decorative Building Products**

For locations, inspiration and more information, please contact your Account Manager or one of our wonderful team.

1300 854 166.  
building@hvg.net.au  
www.hvgbuilding.com.au

HVG Building Pty Ltd - ABN 55 649 379 993  
ACN 649 379 993