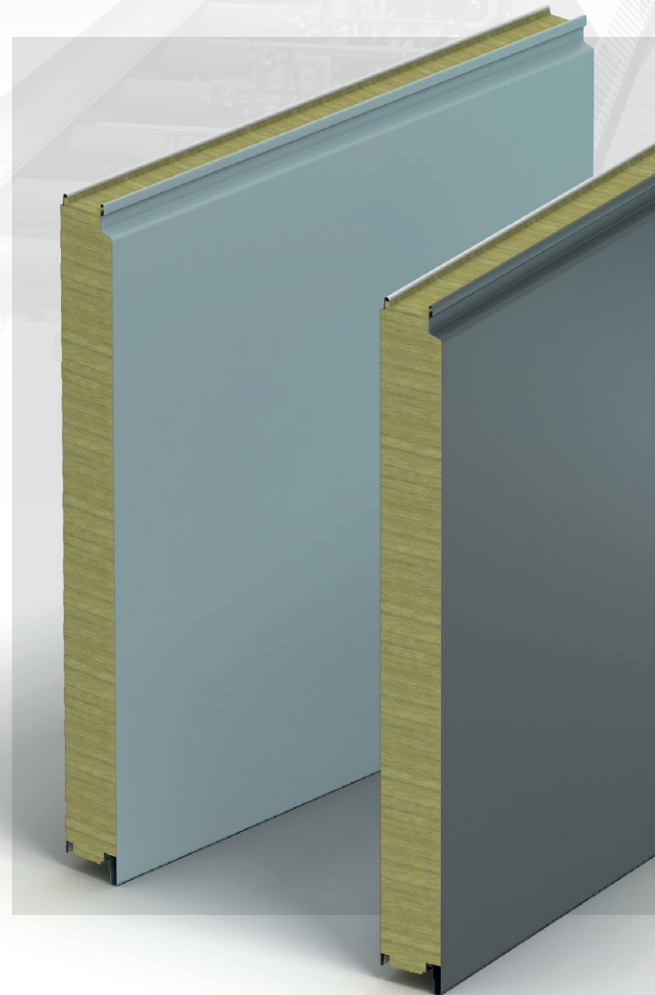
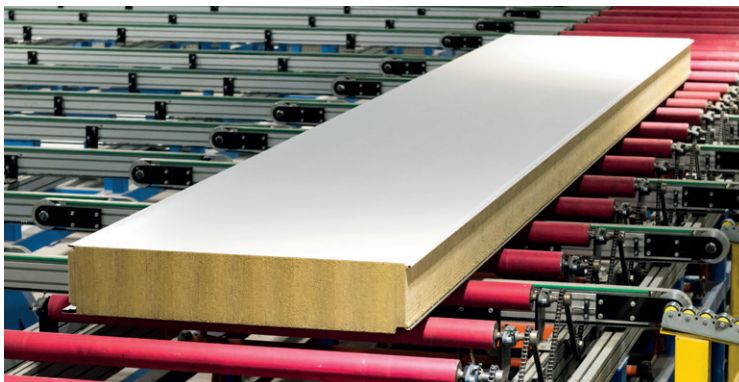
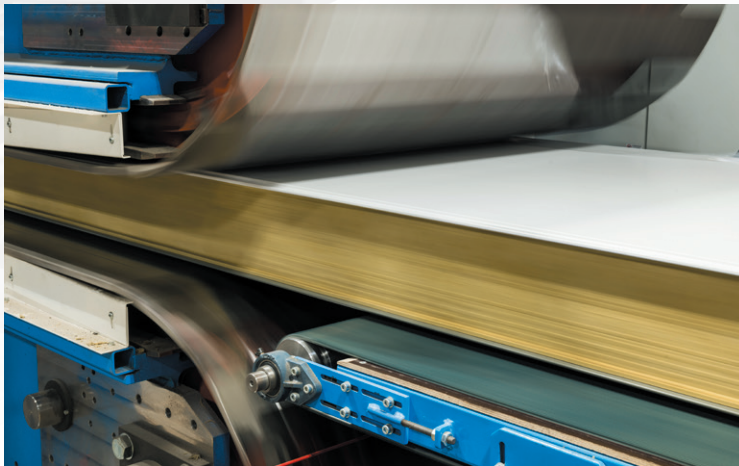


Insulated Panels
Australia

K-Roc™ Evolution Wall Panel Product Data Sheet

Building smarter with K-Roc™



Product Data

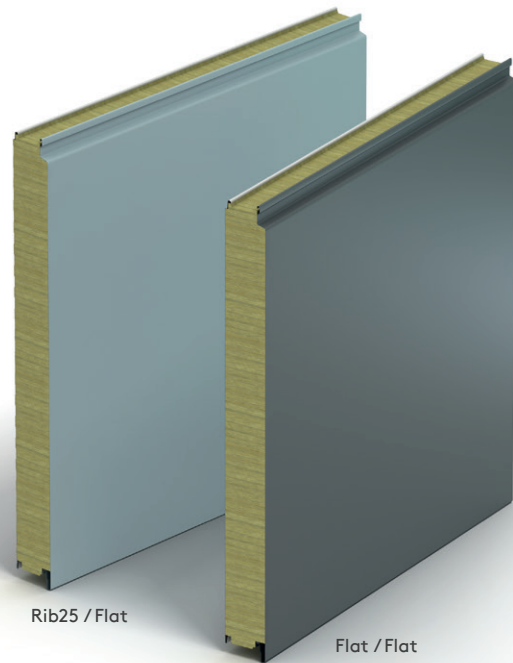
Product Overview

K-Roc™ Evolution Wall Panels are insulated panels with a mineral wool core, that deliver an aesthetically appealing building solution.

K-Roc™ Evolution Wall Panel is a bonded laminated material. It achieves the necessary fire test results, as required by clause C2D10 (6)(g) of the National Construction Code (NCC). Therefore, it can be used wherever a non-combustible material is required by the NCC.

Application

Featuring a flat profile with a secret-fix providing a smooth visual finish. Panels can be installed vertically or horizontally across the building façade.



Dimensions, Thermal Performance & Weight

Panel Nominal Thickness (mm)	Product R-Value (m²K/W) at 23°C	Product U-Value (W/m²K) at 23°C	Total R-Value (m²K/W)		Weight* (kg/m²)
			Heat Flow Out (Winter)	Heat Flow In (Summer)	
75	1.54	0.65	1.78	1.63	19.50
100	2.05	0.48	2.31	2.12	22.25
120	2.46	0.40	2.75	2.52	24.50
150	3.08	0.32	3.39	3.10	28.00
175	3.59	0.27	3.93	3.60	31.00
200	4.10	0.24	4.47	4.09	33.75

The R-Values shown are Total R-Values for the building element as required by the Energy Provisions of the National Construction Code, calculated in accordance with AS/NZS 4859.2: 2018.

K-Roc™ Evolution Wall Panels are manufactured, tested and packaged in conformance with AS/NZS 4859.1: 2018.

Declared Product R-Value is calculated in accordance with AS/NZS 4859.1: 2018 as required for compliance to the National Construction Code.

* Actual weight subject to vary ± 10% due to manufacturing and raw material tolerances.

Available Lengths

Standard lengths: 2.0 m - 12.0 m.
Export of Australia / sea freight to WA: 11.8 m.

Core thickness (mm)	Minimum length (m)	Maximum length (m)
75	2.0	8.5
100	2.0	10.0
120	2.0	12.0
150		
175		
200		

Note: Additional costs and transport restrictions may apply for non-standard lengths.

Cover Widths

Standard cover width	1000 mm
----------------------	---------

Fixing Method

Secret-fix.

Product Data

Profiles

External Profile: Flat.

Internal Profiles: Rib25 or Flat.

Flat / Rib25



Flat / Flat



Rib25 / Flat



Note: Dimensions are nominal. Actual dimensions will vary due to manufacturing tolerances. Precise dimensions must always be measured from actual samples. All measurements in mm.

Product Tolerances

Product tolerances in accordance with EN 14509: 2013.

Length (≤ 3 m)	± 5 mm
Length (> 3 m)	± 10 mm
Width	± 2 mm
Thickness (≤ 100 mm)	± 2 mm
Thickness (> 100 mm)	± 2 %
Squareness	≤ 0.6 % of width
Flatness* (L = 200 mm)	0.6 mm
Flatness* (L = 400 mm)	1.0 mm
Flatness* (L = 700 mm)	1.5 mm
Bowing	2 mm per metre length up to max. 20 mm

* Flatness shall be measured at least 100 mm from the edge of panel and 200 mm from the end of panel.

Insulation Core

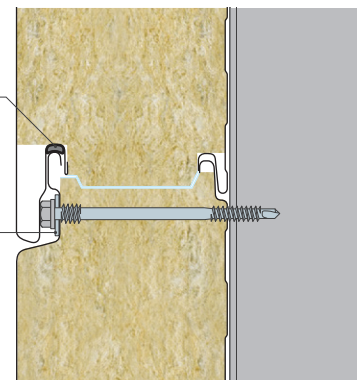
K-Roc™ Evolution Wall Panels are manufactured with a 115 kg/m³ density mineral wool insulation core with a tolerance of ± 10 %.



Panel Joint

Factory-applied seal

Kingspan pre-punched spreader washer



Product Data

Certification and Testing

Combustibility

K-Roc™ Evolution Wall Panel is a bonded laminated material. It achieves the following fire test results, as required by clause C2D10 (6)(g) of the National Construction Code (NCC). Therefore, it can be used wherever a non-combustible material is required by the NCC.

Product	Test Method	Result
Mineral wool core	AS 1530.1 1994 (R2016) Combustibility test for materials	Not deemed combustible
Panel steel skin (uncoated)		Not deemed combustible

Test	Test Method	Result
Ignitability	AS/NZS: 1530.3: 1999	Ignitability Index: 0
Flame Spread		Spread of Flame Index: 0
Heat Release		Heat Evolved Index: 0
Smoke Release		Smoke Developed Index: 3

There are two factory-applied adhesive layers applied during the manufacture of the product. Each adhesive layer does not exceed 1 mm in thickness and the total thickness of the adhesive layers does not exceed 2 mm in thickness. K-Roc™ Evolution Wall Panel meets the requirements of C2D15 'Fixing of Bonded Laminated Materials' when located externally.

Test	Test Method	Result
NCC Group Number in accordance with AS 5637.1: 2015	AS 5637.1: 2015 / ISO 9705 2003 (R2016)	Group 1
Smoke Growth Rate Index (SMOGR _{ARC}) (m ² /S ² x 1000)		< 100

Materials

External Weather Sheet

- Substrate to be G300S steel with AM100 or AM150 metallic coating in accordance with AS 1397: 2021.
- Paint coating in accordance with AS / NZS 2728: 2013.

Internal Liner

- Substrate to be G300S steel with AM100 metallic coating in accordance with AS 1397: 2021.
- Paint coating in accordance with AS / NZS 2728: 2013.

Coatings

External Weather Sheet

- Colours as per the Kingspan Australia colour range, please contact your local area sales manager for further information.

Internal Liner

- Kingspan CLEANsafe 15: The coating has been developed for use as the internal lining of insulated panels. Standard colour is "bright white" with an easily cleaned surface.

Other Internal Coating Options*

- Kingspan AQUAsafe 25 and Kingspan AQUAsafe 55: The coating has been developed for use as the internal lining of insulated panels to suit high humidity internal environments.

* Please contact Technical Services for further information regarding substrates and coatings.

Load / Span

Specific span performance information can be provided by Kingspan Technical Services on a project-by-project basis.

Seals

Factory applied side joint seals. All side joints have a factory applied seal fitted into the groove to automatically seal the joint between panels.

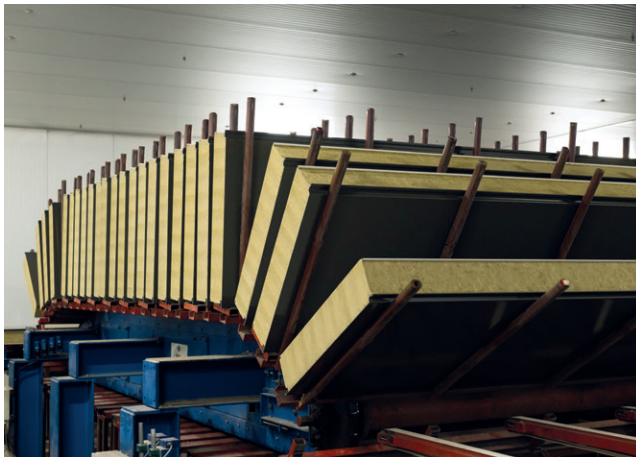
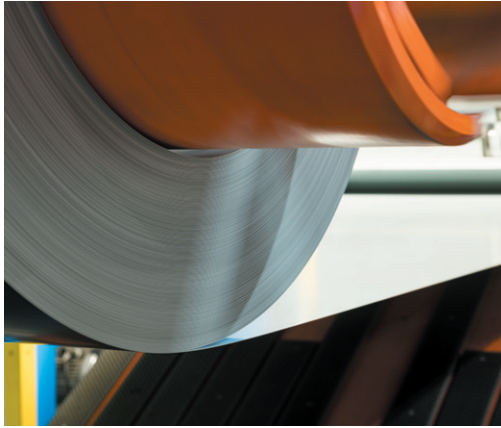
Quality and Durability


K-Roc™ Evolution Wall Panels are manufactured from the highest quality materials using state-of-the-art production equipment to rigorous quality control standards, complying with ISO 9001 standard, ensuring long-term reliability and service life. The panels are also being manufactured under Environmental Management System Certification ISO 14001 and Occupational Health and Safety Certification ISO 45001.

Packaging

K-Roc™ Evolution Wall Panels are stacked with the weather sheet upward. The top and sides are protected by either cardboard or polystyrene and spiral wrap stretch polyfilm. The number of panels in a pack will vary depending on thickness / length of panel.

Product Data



 **Locally made for maximum efficiency.**
St Mary's, Sydney.

Delivery

All deliveries (unless indicated otherwise) are by flatbed road transport to project site. Off loading is the responsibility of the client. Export orders are transported in shipping containers. WA orders are transported in shipping containers, unless road freight is opted for.

Site Installation Procedure

Site assembly instructions are available from Technical Services. Kingspan recommend that the appointed contractor attend the product installation training course prior to installation, which is provided by Kingspan Field Services.

Accreditations



Contact Details

Australia

Kingspan Insulated Panels Pty Ltd
38-52 Dunheved Circuit | St Marys
NSW 2760 Australia

T: +61 (02) 8889 3000

F: +61 (02) 8889 3099

E: info@kingspanpanels.com.au
kingspanpanels.com.au



Please scan for the most
up to date version of this
Product Data Sheet.

For the product offering in other markets please contact your local sales representative or visit www.kingspanpanels.com

Care has been taken to ensure that the contents of this publication are accurate, but Kingspan Limited and its subsidiary companies do not accept responsibility for errors or for information that is found to be misleading. Suggestions for, or description of, the end use or application of products or methods of working are for information only and Kingspan Limited and its subsidiaries accept no liability in respect thereof.

