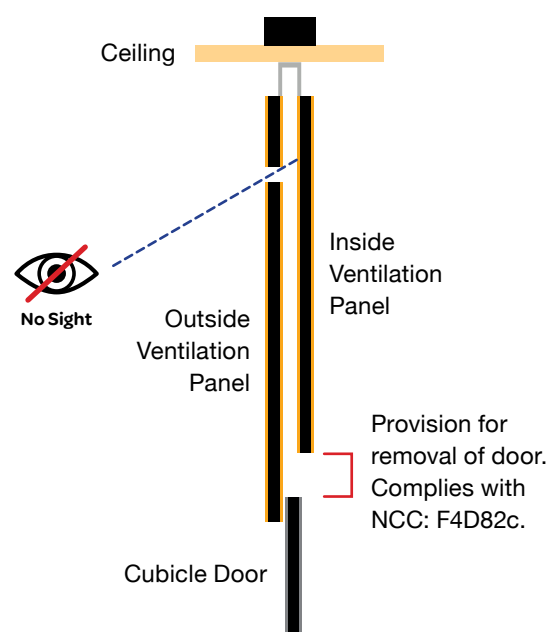


Privacy Max eliminates all gaps around panels and doors ensuring maximum privacy.

### Ventilation Panel Detail



Ventilation panel allows air circulation and ensures visual privacy. Patent Pending.

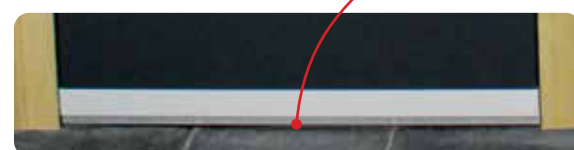
Aluminium extrusions in Oyster Grey powder-coat with a 10 Year Warranty.

Privacy Max ventilation panel.

Lift-off gravity hinges.

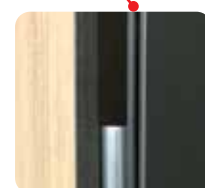
Viva Satin Chrome cast alloy hardware with concealed fixings.

Compliant Ambulant Door Handle.



Privacy Max floor seal prevents gaps under the door providing visual and acoustic privacy. Cycle Tested to 50,000 operations. Patent Pending.

All panels and nibs are mounted to the floor and fixed to the ceiling. Complies with NCC: F4D81a.



Rubber seal prevents gaps between doors and nibs. Cycle tested to 50,000 operations. Patent Pending.



All Duracube® Privacy Max panels and doors are constructed with Durasafe® 13mm compact laminate.

## How to Specify Privacy Max

### Standard Specification Details

#### Product

Duracube® Full Height Privacy Max (FHPM).

#### Door and Panel Construction Material

Durasafe® 13mm Compact Laminate.

#### Construction

Privacy Max Door Seals.

Privacy Max Ventilation Panel.

#### Hardware

Viva Satin Chrome Hardware.

#### Ceiling Fixing

Aluminium Channel.

Colour – Oyster Grey powder-coat.

#### Floor Mounting

Aluminium Angle.

Colour – Oyster Grey powder-coat.

#### Overall System Height

Minimum 2340mm to Maximum 3000mm AFFL.

**Note:** Optional black hardware is available upon request.

### Regulatory Compliance

**NCC 2022 Part F** – Deem to Satisfy Provisions including:

F4D81a – Unisex facility requirement for full height doors and partitions.

F4D82c – Door removable from outside if less than 1.2m between pan and doorway.

### Construction Comparison

Considerations	Traditional Stud Wall	Privacy Max
Visual Privacy	Gap under door for airflow	No visual gaps
Construction Time	10 to 14 days	2 to 3 days
Construction Cost	\$3,300.00 per cubicle	\$3,160.00 per cubicle
Maintenance and Cleaning Cost	\$460.00 per cubicle per year	\$130.00 per cubicle per year
Graffiti Removal	Difficult to remove from painted services and grout	Easy to remove from Durasafe® Compact Laminate

Durasafe®  
10 Year  
Warranty



Durasafe® 13mm compact laminate is antibacterial, anti-fungal and antiviral, eliminating 99% of the most common microorganisms.

Waterproof, durable, easy to clean, impact and scratch resistant.



Contact our friendly sales team:  
 Phone: 1300 387 228  
 Email: [sales@duracube.com.au](mailto:sales@duracube.com.au)  
[www.duracube.com.au](http://www.duracube.com.au)

BR002\_09/2023



# Privacy Max

Wet area partitioning system ensuring maximum privacy



No Sight

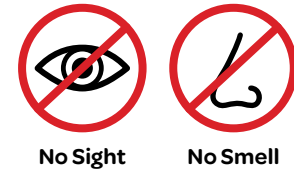


No Smell

# Privacy Max

**Duracube® Full Height Privacy Max** is a wet area partitioning system that is a cost-effective alternative to traditional stud wall construction.

Privacy Max cubicles ensure maximum visual and acoustic privacy while also allowing ventilation.



## Applications

- > Schools and Universities
- > End Of Trip (EOT) Facilities
- > Shopping Centres
- > Sport and Gym Change Rooms
- > Defence Ablution Blocks
- > Corporate Amenities
- > Recreational Amenities

## Features and Benefits

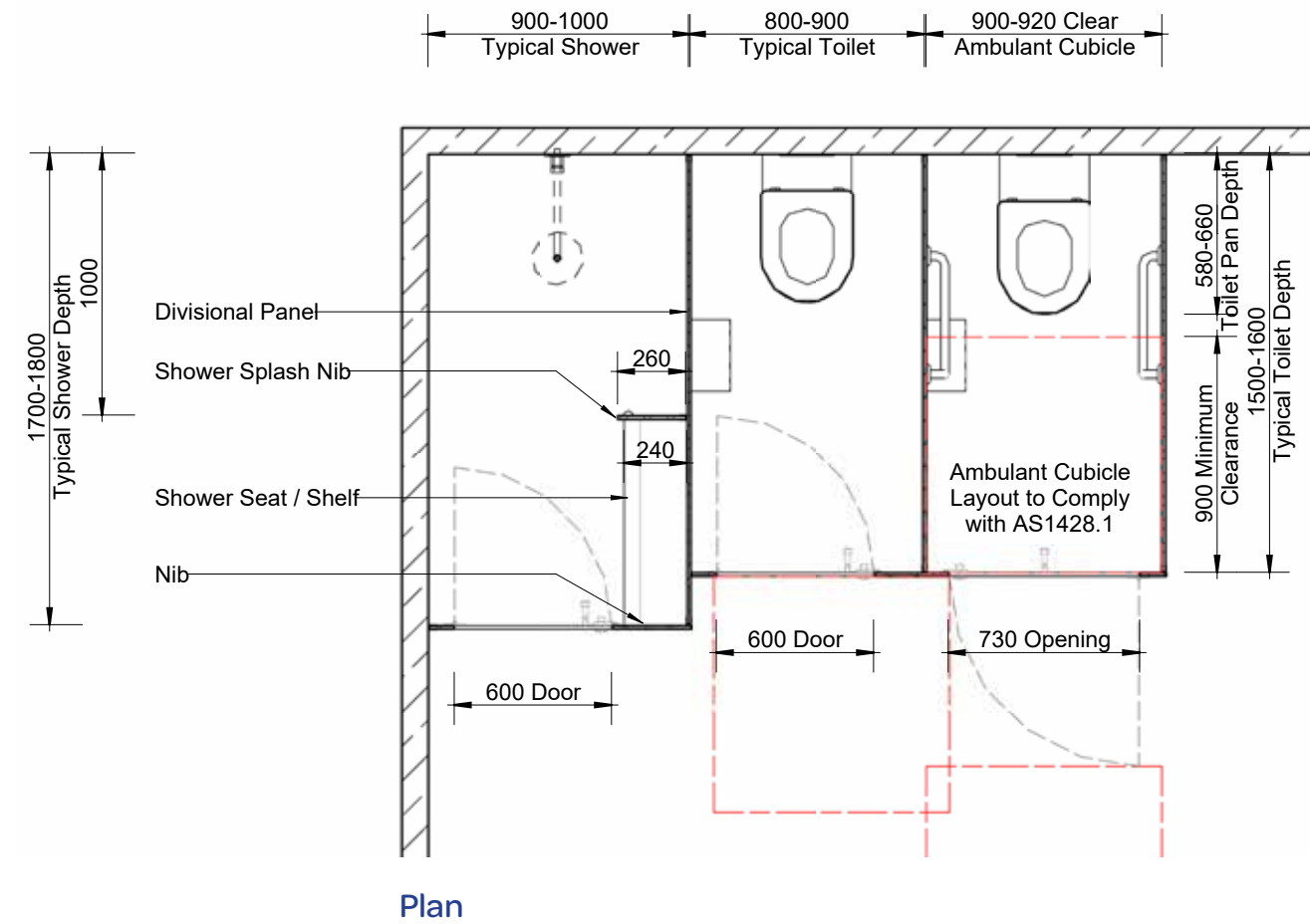
- > Economical alternative to stud wall construction.
- > Quick and easy installation.
- > Less trades required.
- > Minimal project management and program time.
- > Sustainable use of materials.
- > Nibs and divisional panels are mounted to the floor and fixed to the ceiling to maximise privacy.
- > Acoustic rubber seal around doors and openings is a standard inclusion.
- > No sight gaps around panels, nibs and doors.



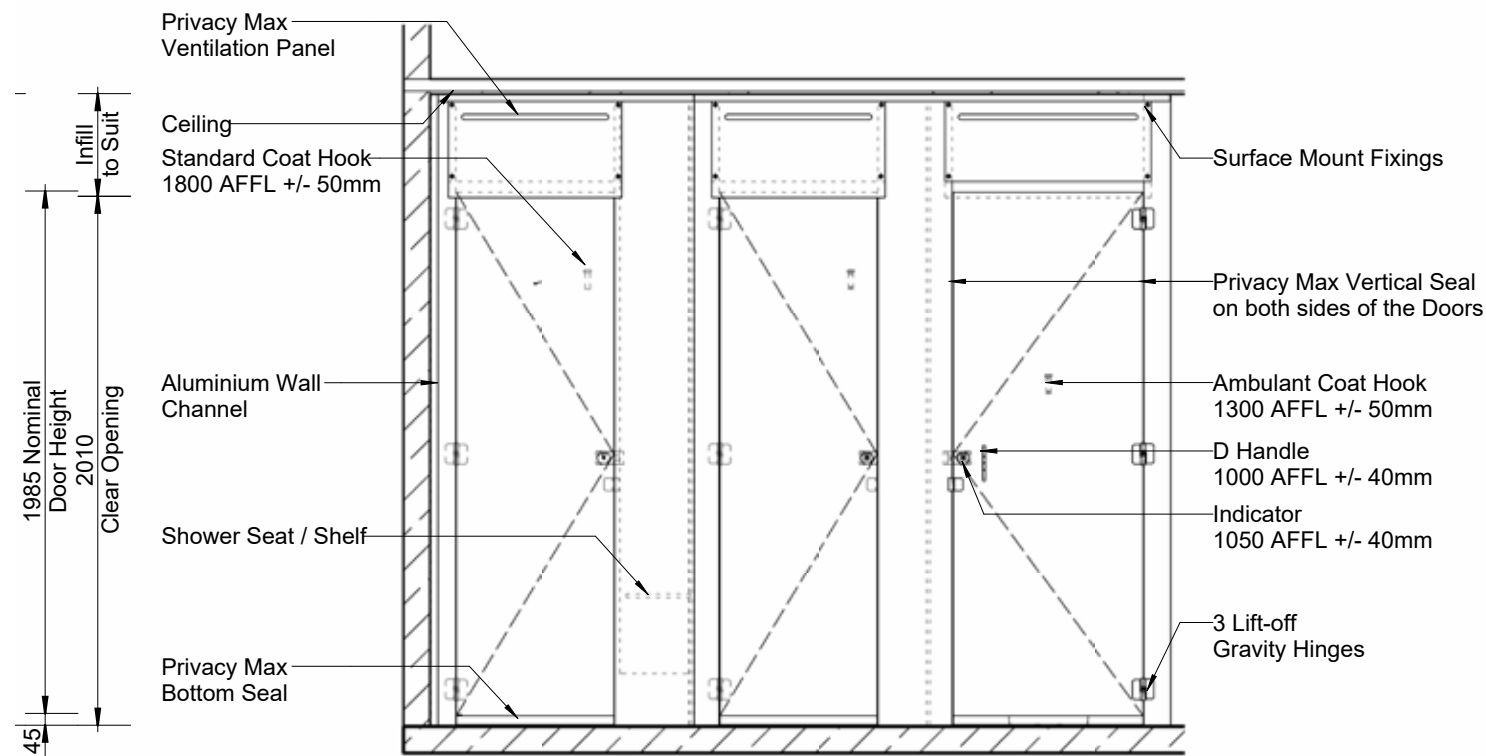
- > Durasafe® 13mm compact laminate construction.
- > No edge strip required as compact laminate black core is visible on edges.
- > Impact resistant construction.
- > Vandal resistant surface.
- > Waterproof, suitable for hose cleaning.
- > Easy to clean and sanitise.
- > Reduced maintenance time and cost.
- > Overall system height 2340 to 3000mm.



## Full Height Privacy Max (FHPM)

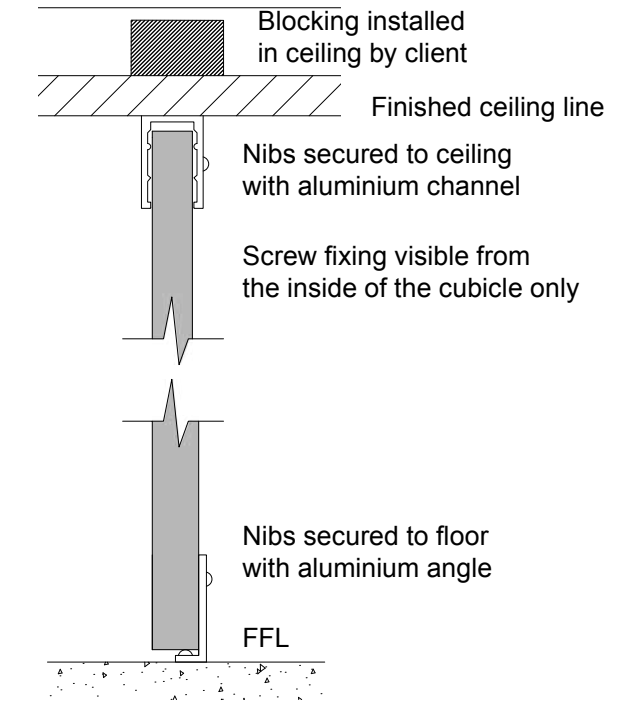


Plan

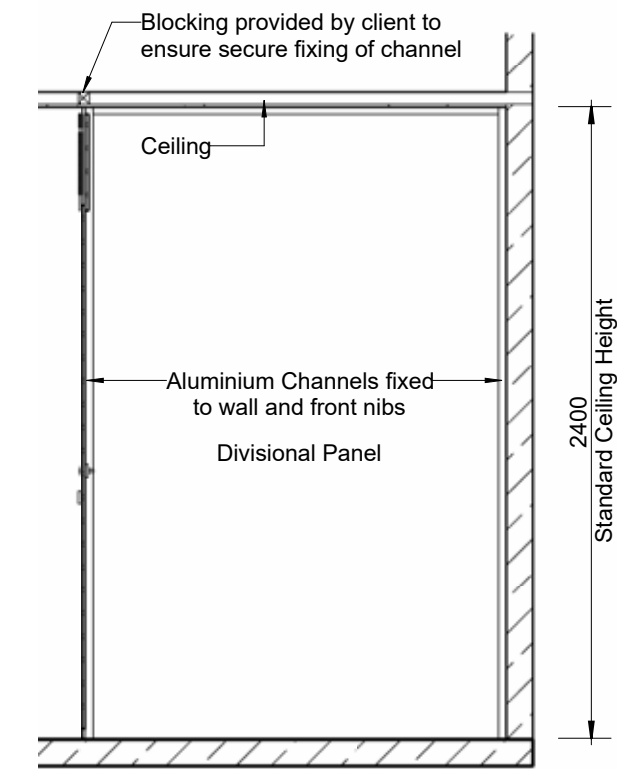


Elevation

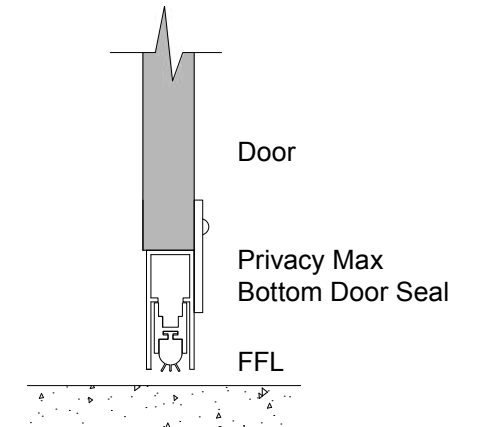
## Ceiling Fixing Detail



## Floor Mounting Detail



Section



Door Seal Detail