



**ASPECTA**  
ONE

A NEW DIMENSION IN FLOORING

**ASPECTA® ONE**  
A NEW DIMENSION IN FLOORING

**THE NEXT CHAPTER**

Introducing Aspecta® One, the latest range of innovative and exciting flooring designs from the specialists in LVT. With years of experience in the industry, we're committed to growing and improving the options available to our customers.

Aspecta One consists of 46 trendsetting tiles and planks, with colors to suit every type of space. Our range of embosses create authentic, eye-catching textures that enhance the natural details of the designs.

Aspecta One is joining two other incredible collections in our range: Aspecta Five and Aspecta Ten.

Discover them all at [aspecta flooring.com](http://aspecta flooring.com)

**Declare.**

Aspecta One - Luxury Vinyl Tile  
Metroflor Corp. / Aspecta B.V.

Final Assembly: Zhangjiagang, Jiangsu, China  
Life Expectancy: 20 Years  
End of Life Options: Recyclable (100%)

Ingredients:

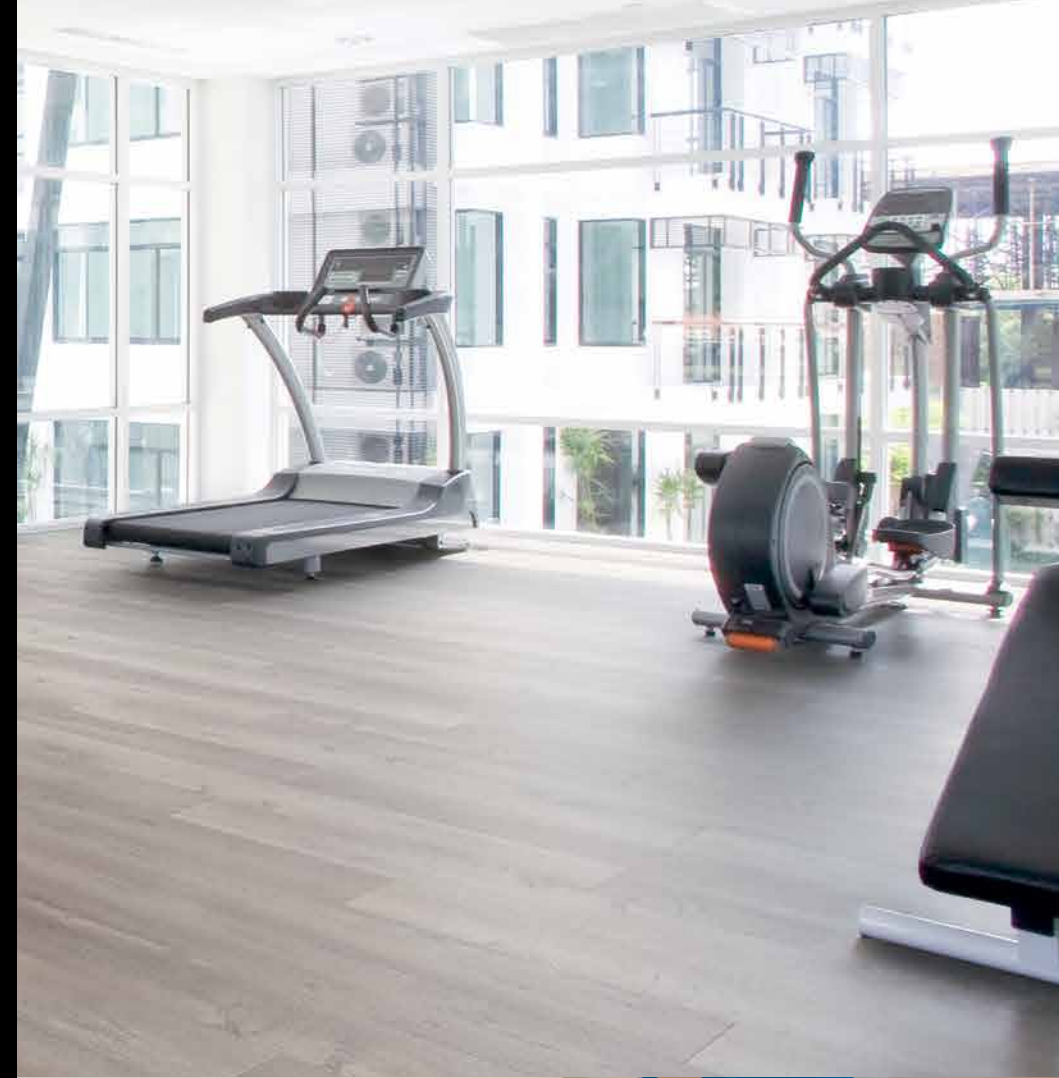
Filler: Calcium Carbonate; Polymer: **PVC**;  
Plasticizer: Dioctyl Terephthalate (DOTP);  
Modifiers: 2-Propenenitrile, Polymer with  
1,3-Butadiene, Methyl Methacrylate, Copolymer  
with Butyl Acrylate; Stabilizers: Calcium  
Stearate, Zinc Stearate, Lanthanum(3+)  
Stearate; UV Acrylic Layer: Polyurethane Foams,  
1,6-Hexanediol Diacrylate, Trimethylolpropane  
Triacrylate (TMPTA), Dipropylene Glycol  
Diacrylate, Fumed Silica, Crystalline-Free,  
Hydroxycyclohexyl Phenyl Ketone; Pigment:  
Carbon Black; Inks: C.I.Pigment Red 221, Vinyl  
Chloride-Vinyl Acetate Copolymers

Living Building Challenge Criteria:

HCW-0003	EXP: 01 APR 2018
VOC Content: N/A	VOC Emissions: CDPH Compliant
<b>Declaration Status</b>	<input type="checkbox"/> LBC Red List Free
	<input type="checkbox"/> LBC Compliant
	<input checked="" type="checkbox"/> Declared

INTERNATIONAL LIVING FUTURE INSTITUTE™ [www.international-living.com](http://www.international-living.com)

Aspecta® proudly supports the International Living Future Institute™ and its Declare<sup>SM</sup> Label transparency program, which encourages manufacturers to disclose the ingredients in their products, thus allowing consumers to make informed decisions about the materials they purchase.



DRYBACK  
22mil (0.55mm) wear layer  
46 colors

Recommended for Healthcare, Education, Hospitality, Retail and Corporate.



DRYBACK  
28mil (0.7mm) wear layer  
109 colors

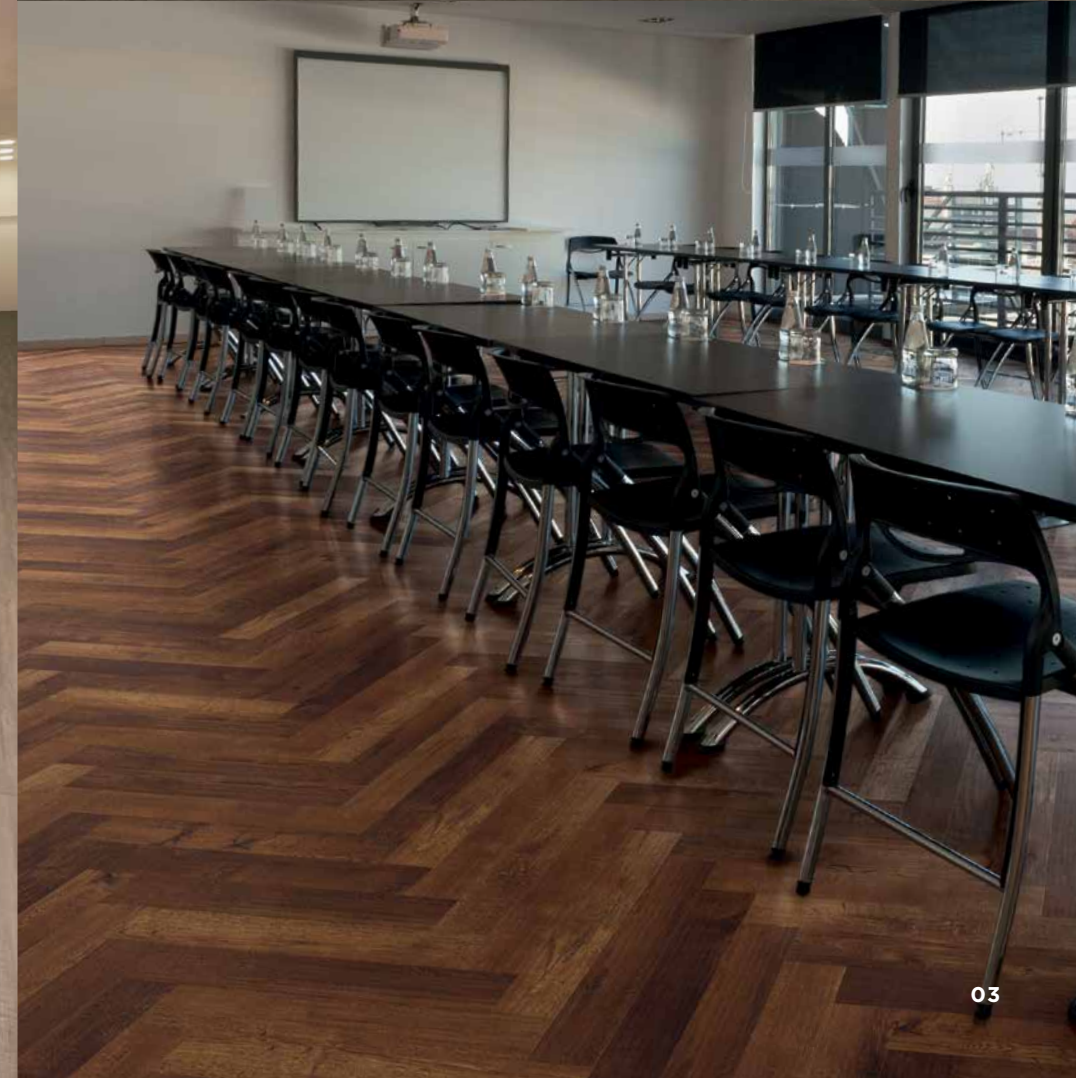
Recommended for Healthcare, Transportation, Education, Hospitality, Retail, Light Industrial, Corporate and any area with heavy duty requirements.



Featuring **ISOCORE** Technology®

CLICK-System  
28mil (0.7mm) wear layer  
ISOCORE Technology®  
34 colors

Recommended for Healthcare, Education, Hospitality, Retail and Corporate. Because of its multi-layer construction, it is especially recommended for hotels, schools, offices and renovation projects.

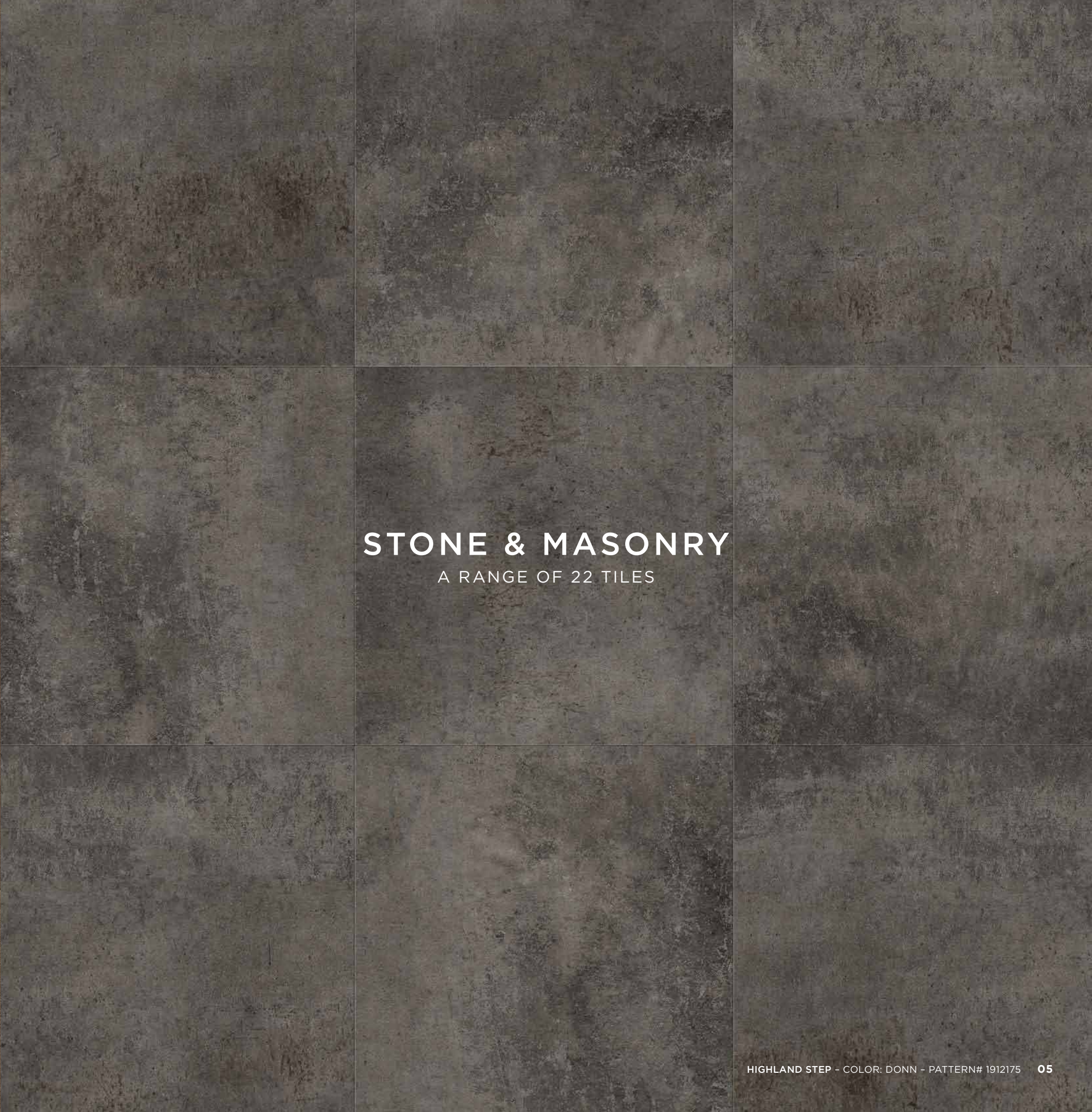






## WOODS

A RANGE OF 24 PLANKS



## STONE & MASONRY

A RANGE OF 22 TILES





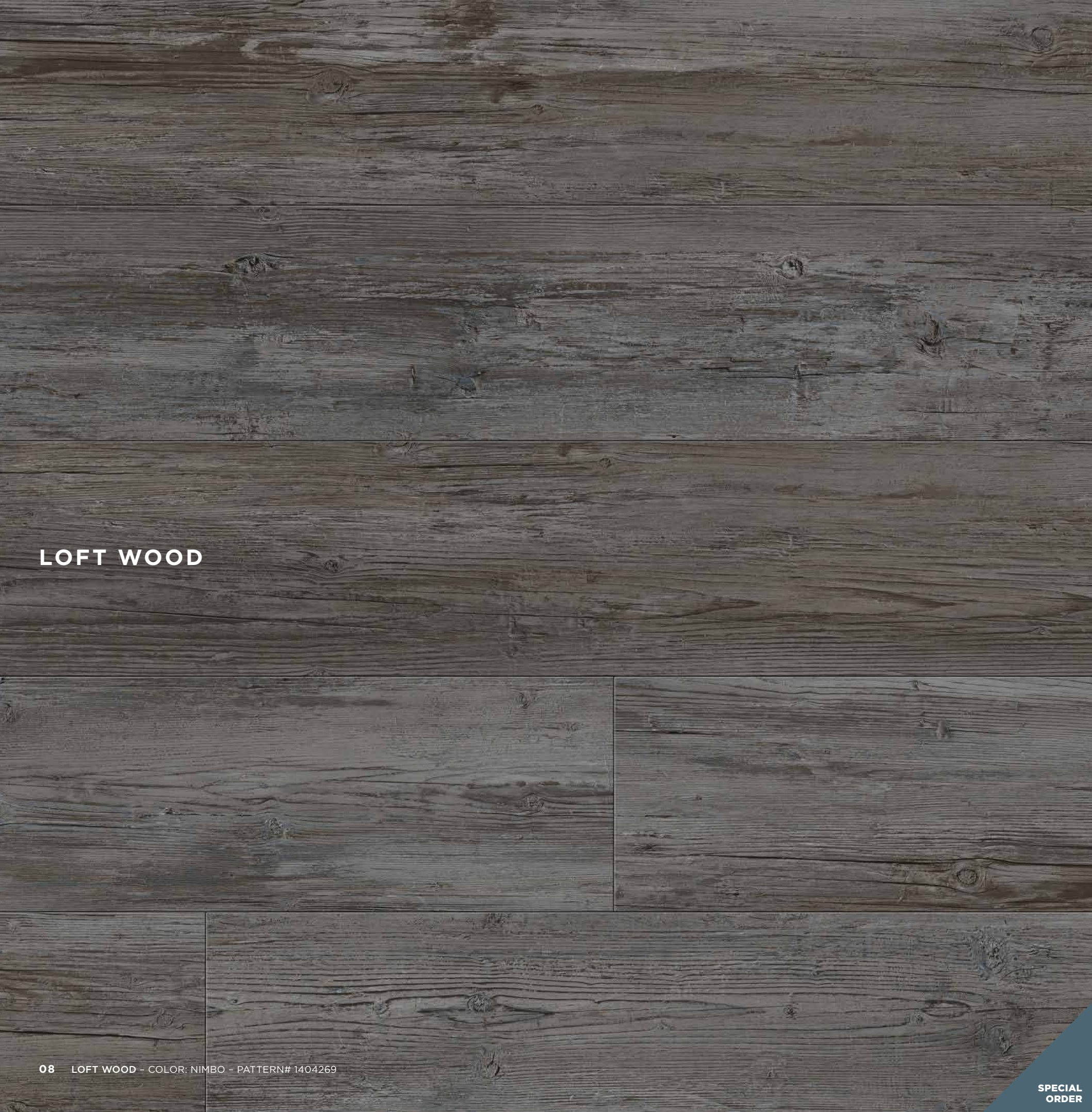
## WOODS

Aspecta® One boasts an eclectic and intriguing collection of stunning wood designs for every environment.

Our extensive range of embosses enhance the finer details of the wood grain with a soft and subtle elegance, and are matched beautifully with our full selection of inspiring colors. From bright, uplifting hues to rich, warming tones, you're sure to find a color to suit your project.

Planks are available in 9" x 60"/228.6mm x 1524mm and 7.87" x 48.11"/200mm x 1222mm for your convenience.





# LOFT WOOD

Crafted from robust pinewood, this flooring design is available in a stunning range of natural grey tones. It creates a distressed, industrial effect that would be perfect for converted living spaces.

Size: 9" x 60"/228.6mm x 1524mm  
Edge Detail: Micro-Bevel  
Emboss: Barnside



LOFT WOOD - COLOR: ALTO - PATTERN# 1404264



LOFT WOOD - COLOR: STRATUS - PATTERN# 1404263



LOFT WOOD - COLOR: CIRRO - PATTERN# 1404262



Traditionally used as a veneer or furniture wood, this cherrywood floor is a rare and unusual addition to any space. Here, we have used the raw, untreated wood to create a design with unexpected charm.

Size: 9" x 60"/228.6mm x 1524mm  
Edge Detail: Micro-Bevel  
Emboss: Natural Timber



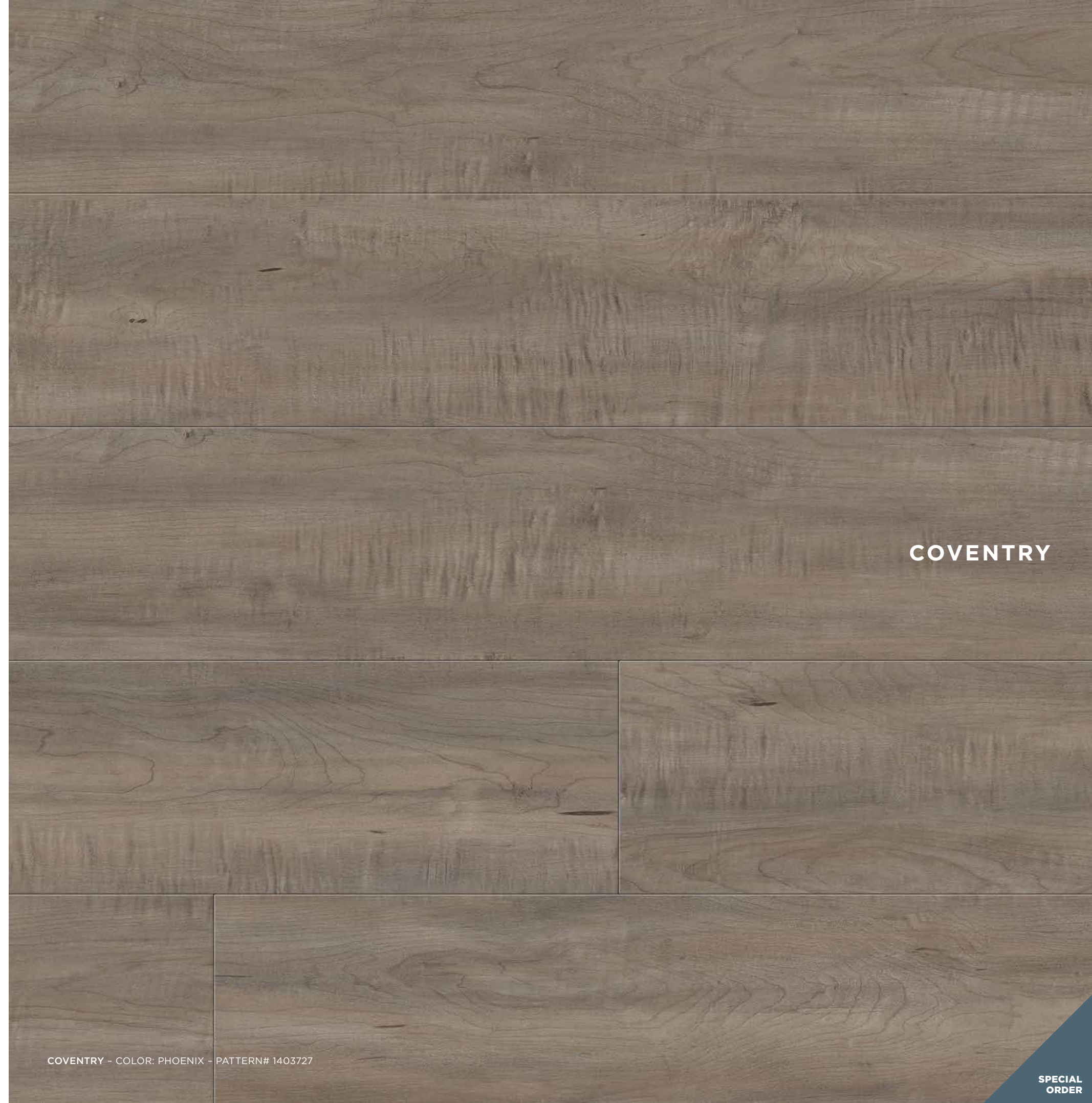
COVENTRY - COLOR: ROCK - PATTERN# 1403726



COVENTRY - COLOR: ALDABRA - PATTERN# 1403724



COVENTRY - COLOR: SOPYRS - PATTERN# 1403721

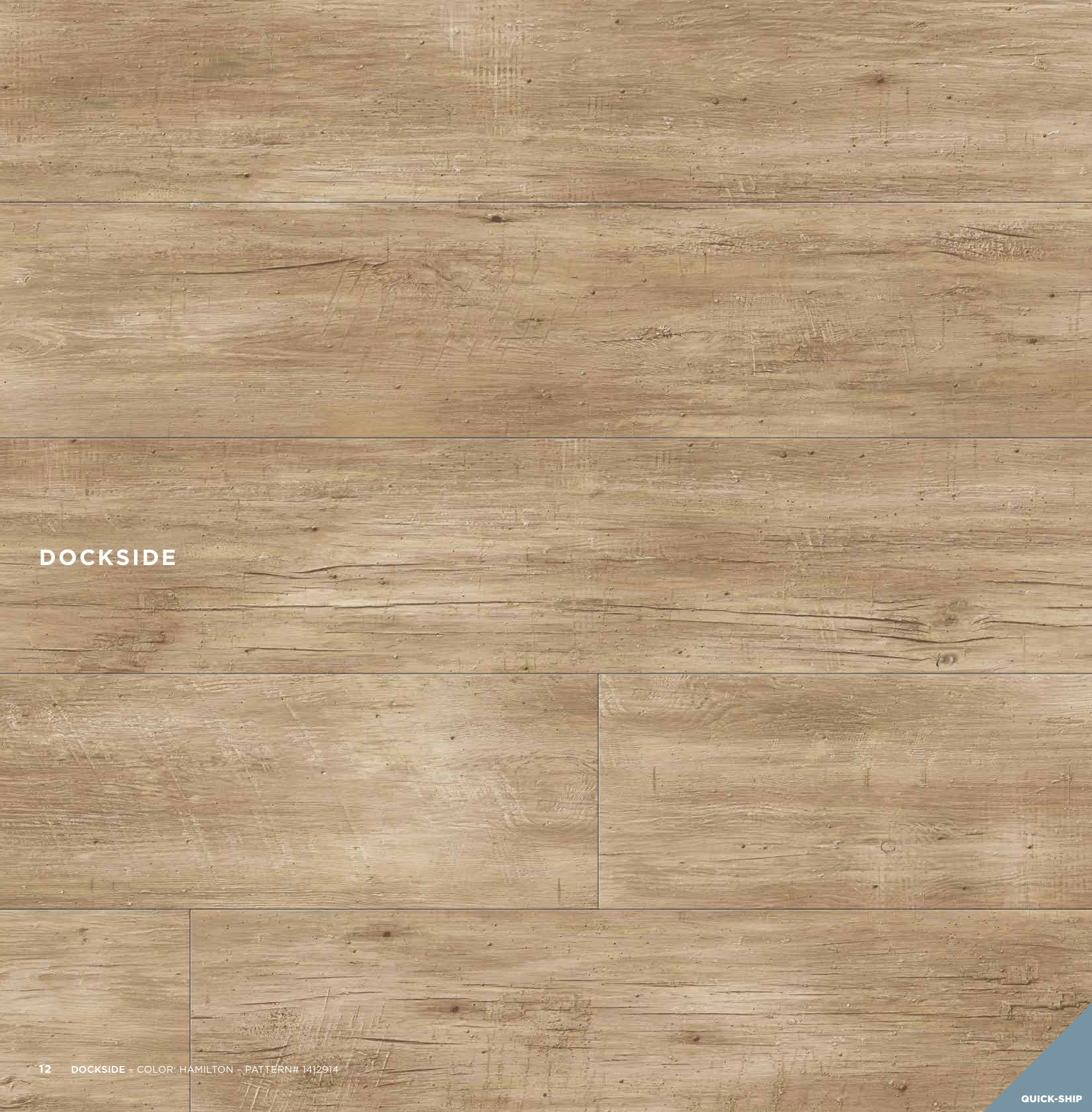


COVENTRY

COVENTRY - COLOR: PHOENIX - PATTERN# 1403727

SPECIAL ORDER





DOCKSIDE

This wood design gives an aged effect as if it once belonged to an old town hall. Even after years of slowly drying and aging, the wood retains its original look and shine.

Size: 9" x 60"/228.6mm x 1524mm  
Edge Detail: Micro-Bevel  
Emboss: Barnside



QUICK-SHIP

DOCKSIDE - COLOR: DEPTFORD - PATTERN# 1412916



SPECIAL ORDER

DOCKSIDE - COLOR: HALIFAX - PATTERN# 1412917







# SHIPWRIGHT

Oak, a firm favorite across the construction and interior design industries for premium quality, is given a rustic yet modern twist. Wood imperfections along with cutting and planing marks are accentuated by a sophisticated in-register emboss.

Size: 7.87" x 48.11"/200mm x 1222mm  
Edge Detail: Square  
Emboss: In-Register



SHIPWRIGHT - COLOR: PIONEER - PATTERN# 1329418



SHIPWRIGHT - COLOR: LYNX - PATTERN# 1329416



SHIPWRIGHT - COLOR: ROSEWAY - PATTERN# 1329417



SHIPWRIGHT - COLOR: MONARCH - PATTERN# 1329415



SHIPWRIGHT - COLOR: DANZIG - PATTERN# 1329411



SHIPWRIGHT - COLOR: BOUNTY - PATTERN# 1329414



This washed wood design is reminiscent of the limed wood beams of worn, rugged agricultural barns. Authentic marks and grooves from farming tools and equipment give a stunning visual effect.

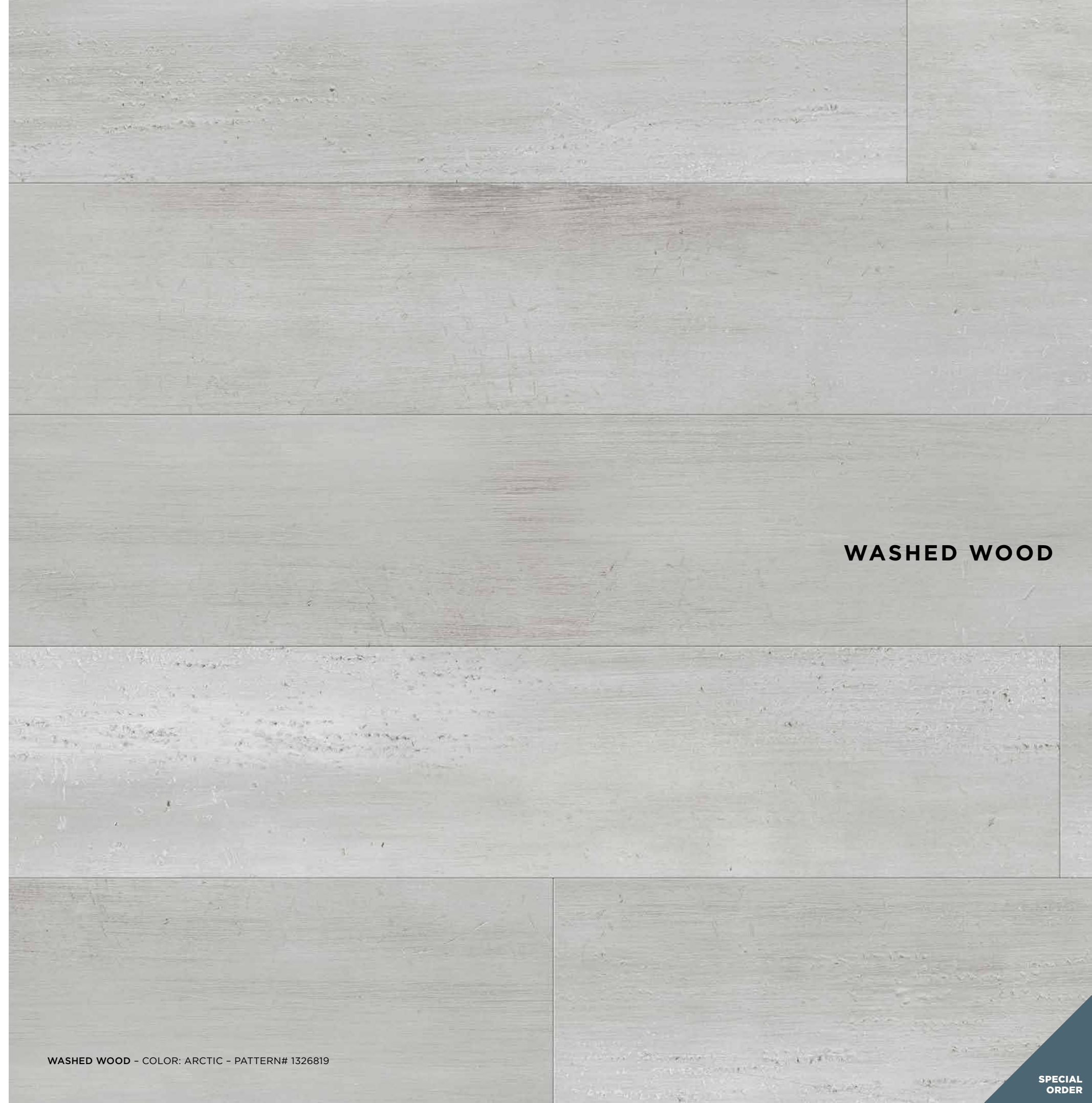
Size: 7.87" x 48.11"/200mm x 1222mm  
Edge Detail: Square  
Emboss: Barnside



WASHED WOOD - COLOR: LIGHT - PATTERN# 1326817



WASHED WOOD - COLOR: MIDNIGHT - PATTERN# 1326816

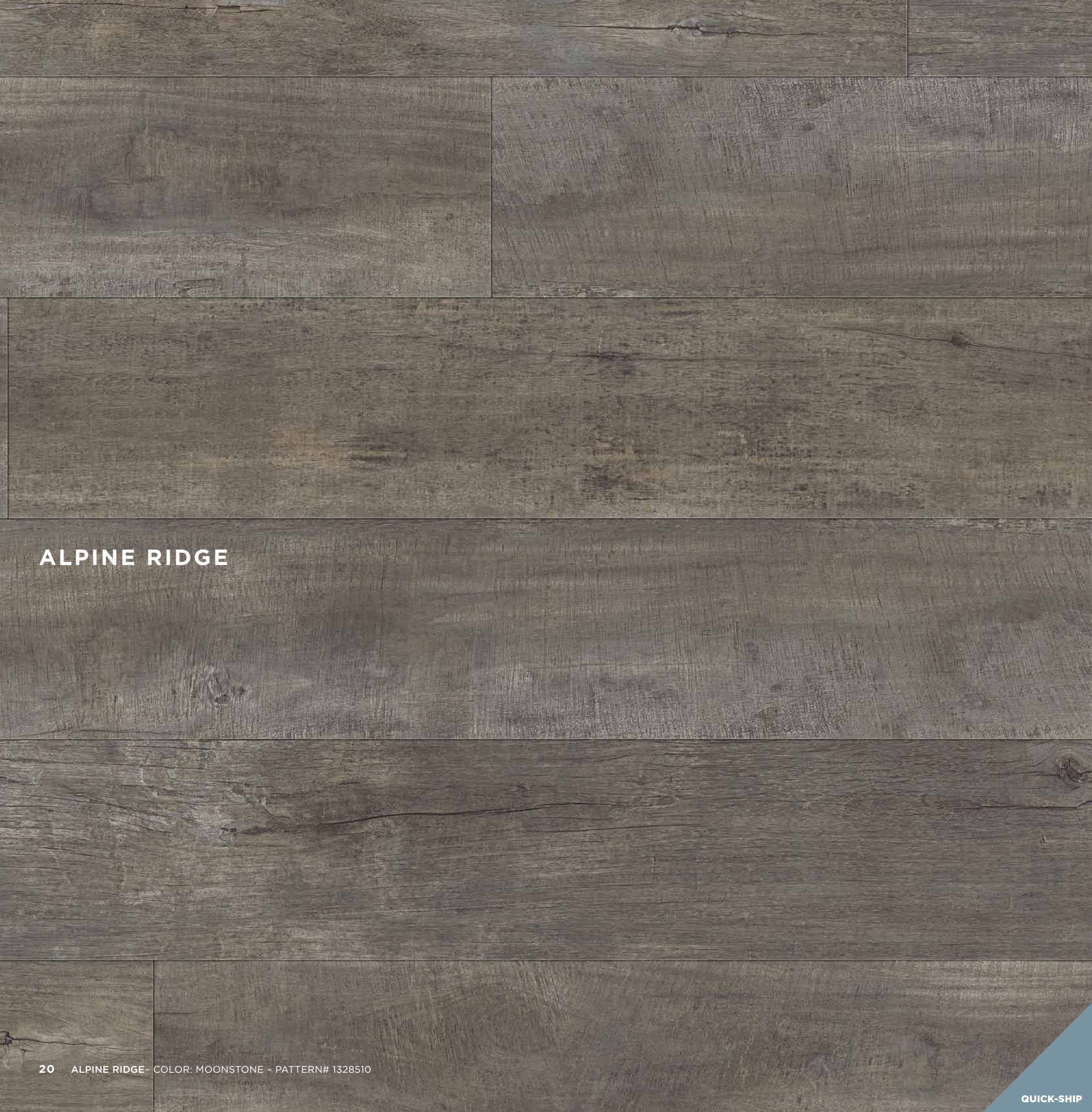


WASHED WOOD

WASHED WOOD - COLOR: ARCTIC - PATTERN# 1326819

SPECIAL ORDER





# ALPINE RIDGE

The characteristics of this wood tell a beautiful story through its lightly faded, worn and weathered details. Naturally altered by rain, hail, storm and sunshine, it has gained new life with this enchanting design.

Size: 7.87" x 48.11"/200mm x 1222mm  
Edge Detail: Square  
Emboss: Sawcut



QUICK-SHIP

ALPINE RIDGE - COLOR: PUMICE - PATTERN# 1328511



SPECIAL ORDER

ALPINE RIDGE - COLOR: LAVA - PATTERN# 1328516



QUICK-SHIP

ALPINE RIDGE - COLOR: MICA - PATTERN# 1328519







# INTRODUCING NEW PATTERNED FLOORS. BRING YOUR PROJECT TO LIFE.

Create stunning visual effects with Aspecta's® Patterned Flooring range. This new plank size enables you to express your creativity with a choice of five alluring pattern styles to add an intriguing detail to any space.

Our Patterned Flooring comes in eight striking wood colors from the Aspecta One range, across our Shipwright, Washed Wood and Alpine Ridge collections.

The elements are available in **4" x 24"/101.6mm x 609.6mm**, and can be arranged in a number of bold and interesting ways. The beveled edges on all 4 sides further emphasize the stunning pattern effect.



WASHED WOOD - COLOR: ARCTIC - PATTERN# 1126819



ALPINE RIDGE - COLOR: MICA - PATTERN# 1128519



ALPINE RIDGE - COLOR: MOONSTONE - PATTERN# 1128510



WASHED WOOD - COLOR: MIDNIGHT - PATTERN# 1126816



SHIPWRIGHT - COLOR: MONARCH - PATTERN# 1129415



SHIPWRIGHT - COLOR: DANZIG - PATTERN# 1129411



SHIPWRIGHT - COLOR: ROSEWAY - PATTERN# 1129417



SHIPWRIGHT - COLOR: PIONEER - PATTERN# 1129418

## DESIGN EXAMPLES FOR PATTERNED FLOORING



CHECKER BLOCK



RANDOM STRIPE



SINGLE HERRINGBONE



WICKET



TRIPLE HERRINGBONE



# WOODS

Our planks boast an eclectic and intriguing collection of stunning wood designs for every environment. From bright, uplifting hues to rich, warming tones, you're sure to find a color to suit your project.

Planks are available in 9" x 60"/228.6mm x 1524mm and 7.87" x 48.11"/200mm x 1222mm for your convenience.



WASHED WOOD - COLOR: MIDNIGHT\* - PATTERN# 1326816



ALPINE RIDGE - COLOR: PUMICE - PATTERN# 1328511



SHIPWRIGHT - COLOR: BOUNTY - PATTERN# 1329414



SHIPWRIGHT - COLOR: MONARCH\* - PATTERN# 1329415



COVENTRY - COLOR: ROCK - PATTERN# 1403726



LOFT WOOD - COLOR: NIMBO - PATTERN# 1404269



LOFT WOOD - COLOR: ALTO - PATTERN# 1404264



LOFT WOOD - COLOR: STRATUS - PATTERN# 1404263



ALPINE RIDGE - COLOR: LAVA - PATTERN# 1328516



SHIPWRIGHT - COLOR: PIONEER\* - PATTERN# 1329418



ALPINE RIDGE - COLOR: MICA\* - PATTERN# 1328519



COVENTRY - COLOR: ALDABRA - PATTERN# 1403724



ALPINE RIDGE - COLOR: MOONSTONE\* - PATTERN# 1328510



SHIPWRIGHT - COLOR: ROSEWAY\* - PATTERN# 1329417



DOCKSIDE - COLOR: HAMILTON - PATTERN# 1412914



LOFT WOOD - COLOR: CIRRO - PATTERN# 1404262



COVENTRY - COLOR: PHOENIX - PATTERN# 1403727



DOCKSIDE - COLOR: DEPTFORD - PATTERN# 1412916



DOCKSIDE - COLOR: HALIFAX - PATTERN# 1412917



WASHED WOOD - COLOR: LIGHT - PATTERN# 1326817



SHIPWRIGHT - COLOR: LYNX - PATTERN# 1329416



SHIPWRIGHT - COLOR: DANZIG\* - PATTERN# 1329411



WASHED WOOD - COLOR: ARCTIC\* - PATTERN# 1326819



COVENTRY - COLOR: SIPYRS - PATTERN# 1403721

\*Also available in Patterned Flooring. Please refer to pages 24-25 for dedicated pattern numbers and shipment details.

Pictures are for reference only. Please order samples to experience the full color and texture.





## STONE & MASONRY

Aspecta® One's beautiful collection of Stone and Masonry designs are available in a captivating range of colors and embosses.

To bring the range to life, we have taken inspiration from all over the world. Cosmopolitan city landscapes give way to stunning contemporary design details, and traditional, natural settings provide an authentic, timeless appeal.

Our Stone and Masonry designs are available in three sizes:  
24" x 24"/609.6mm x 609.6mm  
18" x 18"/457.2mm x 457.2mm  
12" x 36"/304.8mm x 914.4mm



# MIDTOWN

This authentic, rough concrete features traces of the production process including wood imprints, drying pores and slight chalk efflorescence. The emboss, especially developed for this design, reflects and emphasizes these details in a stylishly subtle way.

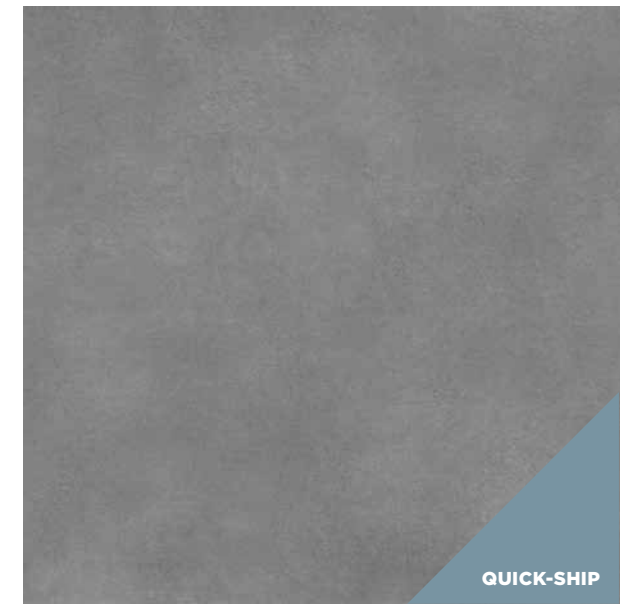
Size: 24" x 24" / 609.6mm x 609.6mm  
Edge Detail: Square  
Emboss: Textured Concrete



MIDTOWN - COLOR: BROWNSTONE - PATTERN# 1722364



MIDTOWN - COLOR: GRACE - PATTERN# 1722360



MIDTOWN - COLOR: EMPIRE - PATTERN# 1722367



MIDTOWN - COLOR: FLATIRON - PATTERN# 1722362



MIDTOWN - COLOR: GRAMERCY - PATTERN# 1722361



# MIDTOWN PRISM

QUICK-SHIP

Similar to our Midtown design, this flooring consists of six on-trend colors, collected from cities all around the world. It can be used as a bold, singular color statement, or together to create a multi-colored effect.

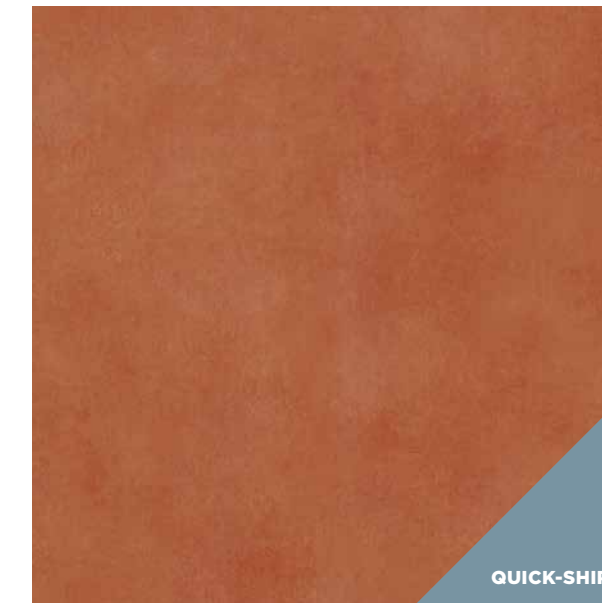
Size: 24" x 24"/609.6mm x 609.6mm

Edge Detail: Square

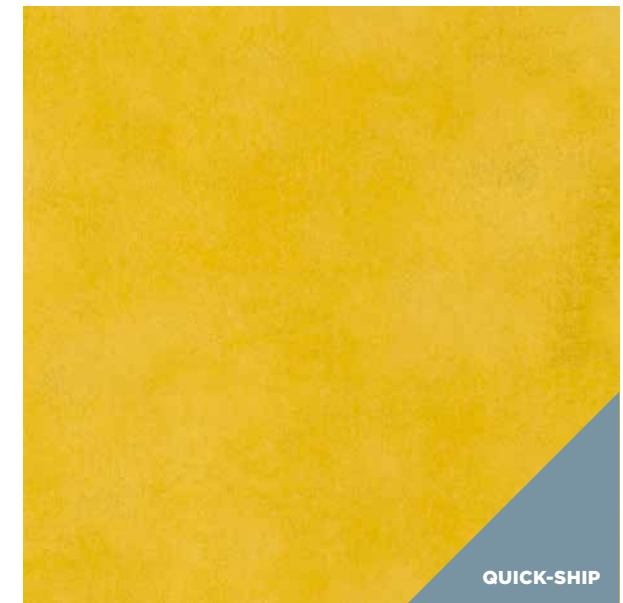
Emboss: Textured Concrete



MIDTOWN PRISM - COLOR: RED - PATTERN# 17223621



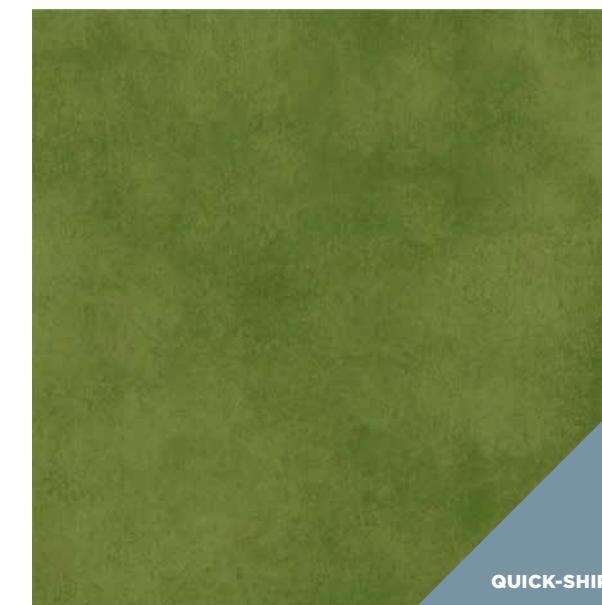
MIDTOWN PRISM - COLOR: ORANGE - PATTERN# 17223620



MIDTOWN PRISM - COLOR: YELLOW - PATTERN# 17223619



MIDTOWN PRISM - COLOR: BLUE - PATTERN# 17223623



MIDTOWN PRISM - COLOR: GREEN - PATTERN# 17223618

Quick-Ship - Inventoried in the USA and available for immediate shipment

Special Order - Requires a 12-week lead-time



At first glance, this ancient stone effect is reminiscent of rich marble or sandstone. On closer inspection, the intricate bark details really come into view. A perfect fusion of stone and wood creates a truly unusual design.

Size: 12" x 36"/304.8mm x 914.4mm  
Edge Detail: Micro-Bevel  
Emboss: Satin



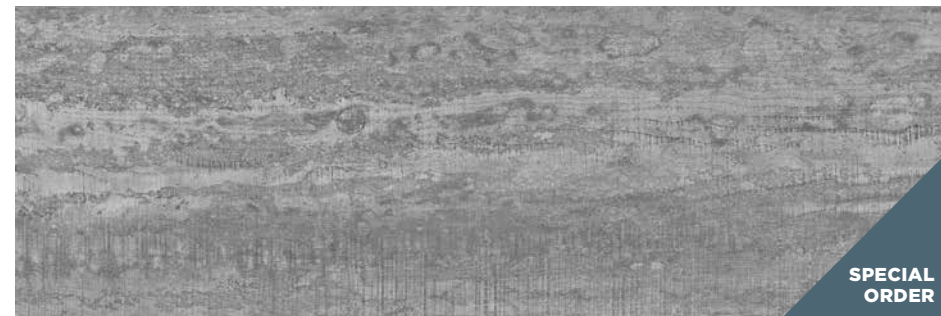
MANOR STONE - COLOR: BLENHEIM - PATTERN# 1504367



MANOR STONE - COLOR: WOBURN - PATTERN# 1504365



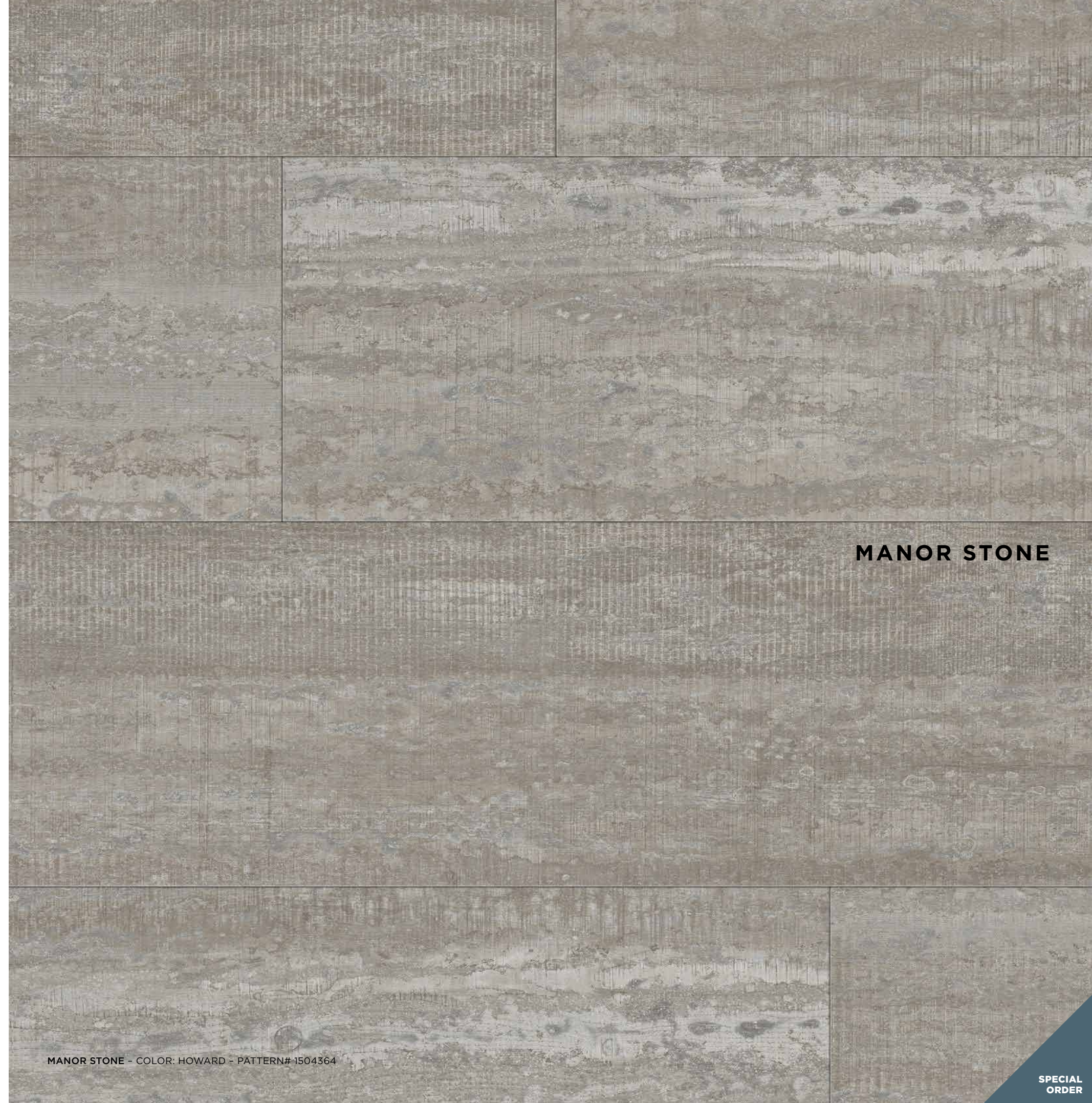
MANOR STONE - COLOR: LYME PARK - PATTERN# 1504361



MANOR STONE - COLOR: HARDWICK - PATTERN# 1504369



MANOR STONE - COLOR: CHATSWORTH - PATTERN# 1504362



MANOR STONE

MANOR STONE - COLOR: HOWARD - PATTERN# 1504364

SPECIAL ORDER









HIGHLAND STEP

A ceramic flooring effect with the perfect balance of clay, quartz and oxides to create this beautifully modern design. Glaze details add a new dimension to this flooring, making it truly stand out.

Size: 18" x 18"/457.2mm x 457.2mm  
Edge Detail: Micro-Bevel  
Emboss: Satin



HIGHLAND STEP - COLOR: DUBH - PATTERN# 1912171



HIGHLAND STEP - COLOR: RUADH - PATTERN# 1912179



HIGHLAND STEP - COLOR: LIATH - PATTERN# 1912172

SPECIAL ORDER



# STONE & MASONRY

Our beautiful collection of Stone and Masonry designs are available in a captivating range of colors and embosses, created using inspiration from all over the world.

Our Stone and Masonry designs are available in three sizes:

24" x 24"/609.6mm x 609.6mm

18" x 18"/457.2mm x 457.2mm

12" x 36"/304.8mm x 914.4mm



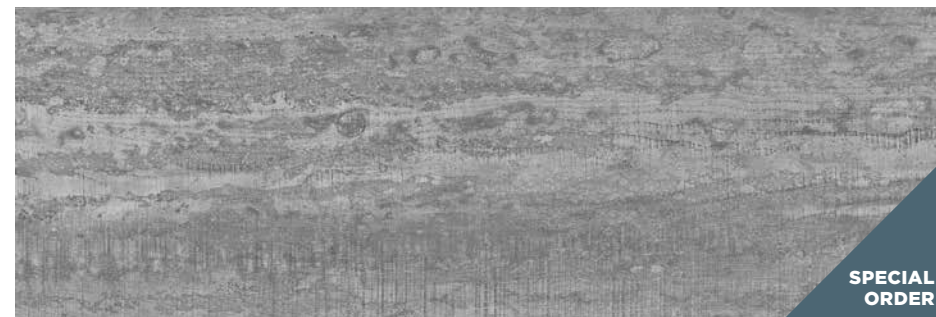
MANOR STONE - COLOR: BLENHHEIM - PATTERN# 1504367



MANOR STONE - COLOR: HOWARD - PATTERN# 1504364



MANOR STONE - COLOR: WOBURN - PATTERN# 1504365



MANOR STONE - COLOR: HARDWICK - PATTERN# 1504369



MANOR STONE - COLOR: LYME PARK - PATTERN# 1504361



MANOR STONE - COLOR: CHATSWORTH - PATTERN# 1504362



HIGHLAND STEP - COLOR: DUBH - PATTERN# 1912171



MIDTOWN - COLOR: ROCKEFELLER - PATTERN# 1722369



HIGHLAND STEP - COLOR: DONN - PATTERN# 1912175



MIDTOWN - COLOR: EMPIRE - PATTERN# 1722367



HIGHLAND STEP - COLOR: RUADH - PATTERN# 1912179



MIDTOWN - COLOR: BROWNSTONE - PATTERN# 1722364



MIDTOWN - COLOR: GRACE - PATTERN# 1722360



HIGHLAND STEP - COLOR: LIATH - PATTERN# 1912172



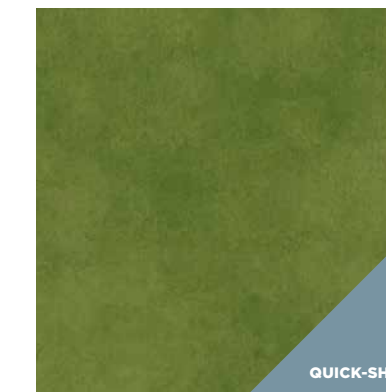
MIDTOWN - COLOR: FLATIRON - PATTERN# 1722362



MIDTOWN - COLOR: GRAMERCY - PATTERN# 1722361



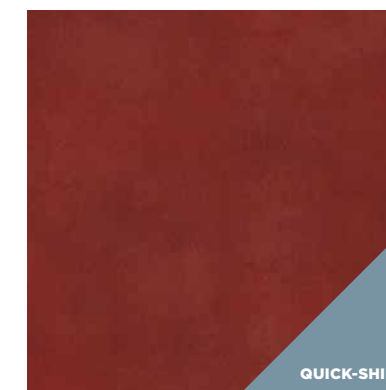
MIDTOWN PRISM - COLOR: BLUE - PATTERN# 17223623



MIDTOWN PRISM - COLOR: GREEN - PATTERN# 17223618



MIDTOWN PRISM - COLOR: PLUM - PATTERN# 17223622



MIDTOWN PRISM - COLOR: RED - PATTERN# 17223621



MIDTOWN PRISM - COLOR: ORANGE - PATTERN# 17223620



MIDTOWN PRISM - COLOR: YELLOW - PATTERN# 17223619



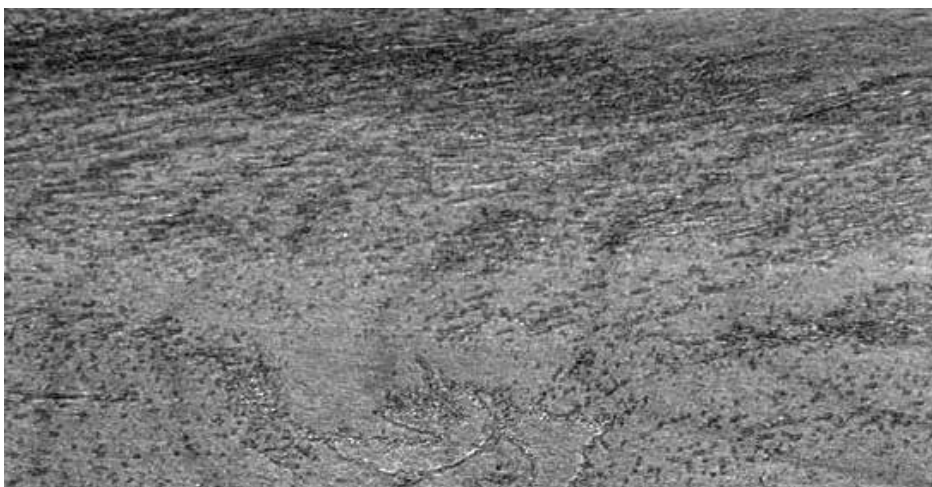
## EMBOSS

Discover Aspecta® One's beautiful collection of in-register and specially designed Wood embosses. The Tile collection boasts an exclusive range of embossing techniques – Textured Concrete and Satin.

### WOODS



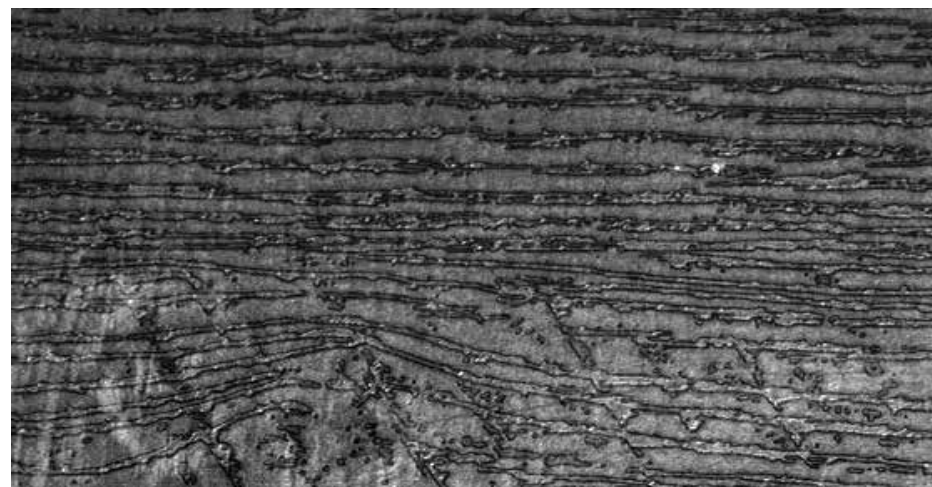
**BARNSIDE** - The relief-like surface image of barnside reflects natural aged wooden planks and gives rustic wood interiors a truly authentic finish.



**NATURAL TIMBER** - The richly varied pore course of minimally treated precious wood gives natural timber its unique, unpretentious earthy finish.



**IN-REGISTER** - This beautiful oak is straight-grown and virtually knotless, with only slight imperfections as well as cutting and planing marks reflected in its surface.



**SAWCUT** - Unplaned and unpolished, sawcut is construction timber cut directly from tree trunks, with sawing marks and sawdust intact. This gives this wood unmatched character and authenticity.

### STONE AND MASONRY



**TEXTURED CONCRETE** - With its rough texture, this freshly dried industrial concrete shows traces of the preparation process, such as drying pores and the beat trace of smoothing tools. Perfect for adding an industrial feel to any setting.



**SATIN** - The regular, subtle fine structure creates the noble tile image of Satin and gives a stunning, natural light refraction.



# TECHNICAL DETAILS

Aspecta® One Planks and Tiles are available in a wide range of sizes:

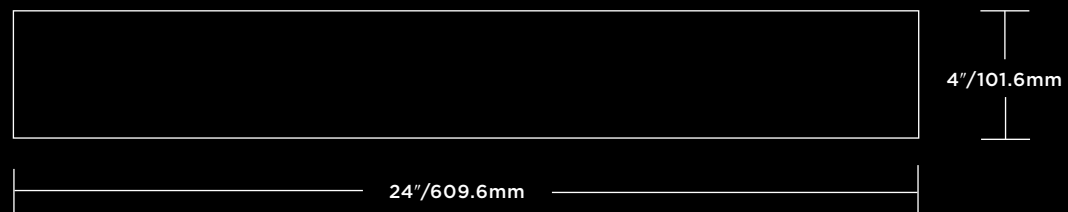
## PLANK



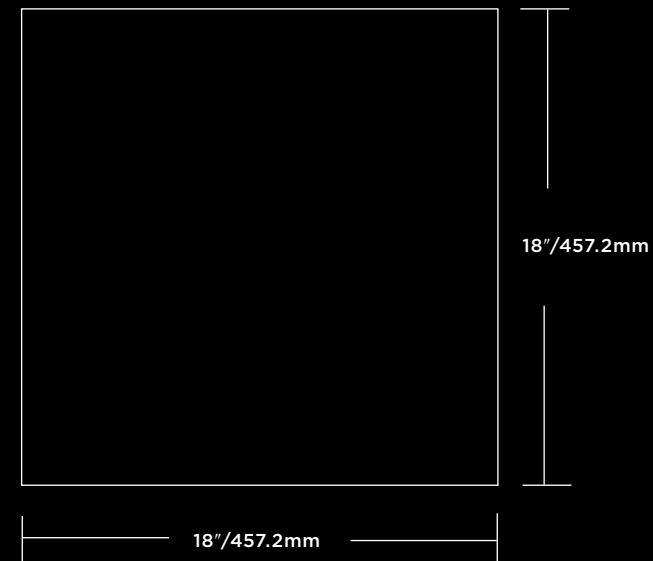
## PLANK



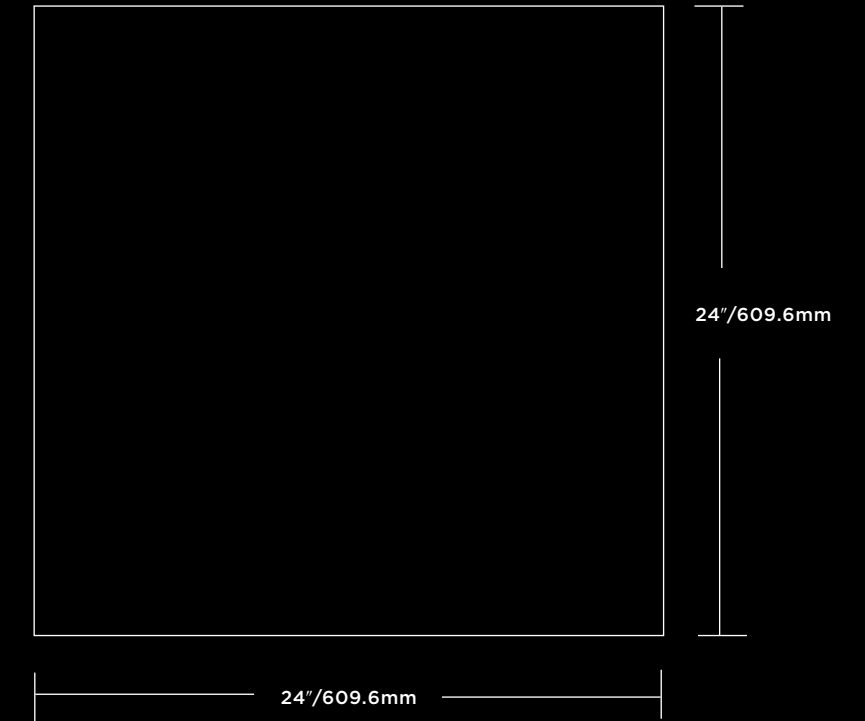
## PATTERNED FLOORING



## TILE



## TILE



## TILE





## TECHNICAL DETAILS

PHYSICAL PROPERTIES & PACKAGING – PLANK (DRYBACK - 0.098" GAUGE / 22MIL WEAR LAYER)			
Size	4" x 24" (101.6mm x 609.6mm)	7.87" x 48.11" (200mm x 1222mm)	9" x 60" (228.6mm x 1524mm)
Construction	Solid Vinyl Tile/LVT	Solid Vinyl Tile/LVT	Solid Vinyl Tile/LVT
Use	Commercial	Commercial	Commercial
Wear Layer	22 mil (0.55mm)	22 mil (0.55mm)	22 mil (0.55mm)
Edge Detail	Micro-Bevel Edge	Square Edge	Micro-Bevel Edge
Finish	Urethane Coating with Ceramic Bead Particles	Urethane Coating with Ceramic Bead Particles	Urethane Coating with Ceramic Bead Particles
Gauge	0.098" (2.5mm)	0.098" (2.5mm)	0.098" (2.5mm)
Pieces/Carton	36	12	10
Coverage/Piece	¾ Sq.Ft. (0.0619 Sq.M.)	2.63 Sq.Ft. (0.244 Sq.M.)	3.75 Sq.Ft. (0.348 Sq.M.)
Coverage/Carton	24 Sq.Ft. (2.23 Sq.M.)	31.56 Sq.Ft. (2.93 Sq.M.)	37.5 Sq.Ft. (3.48 Sq.M.)
Coverage/Pallet	48 Cartons/Pallet (1,152 Sq.Ft./107.04 Sq.M.)	40 Cartons/Pallet (1,262.4 Sq.Ft./117.2 Sq.M.)	60 Cartons/Pallet (2,250 Sq.Ft./208.8 Sq.M.)
Coverage/Container	39 Pallets/Container (44,928 Sq.Ft./4,174.56 Sq.M)	36 Pallets/Container (45,446 Sq.Ft./4,219.2 Sq.M.)	20 Pallets/Container (45,000 Sq.Ft./4,176 Sq.M.)
Aspecta® One Limited Commercial Warranty <sup>1</sup>	Material: 20 Years (100%) Labor: 10 Years (Pro-Rated)	Material: 20 Years (100%) Labor: 10 Years (Pro-Rated)	Material: 20 Years (100%) Labor: 10 Years (Pro-Rated)

PHYSICAL PROPERTIES & PACKAGING – TILE (DRYBACK - 0.098" GAUGE / 22MIL WEAR LAYER)			
Size	12" x 36" (304.8mm x 914.4mm)	18" x 18" (457.2mm x 457.2mm)	24" x 24" (609.6mm x 609.6mm)
Construction	Solid Vinyl Tile/LVT	Solid Vinyl Tile/LVT	Solid Vinyl Tile/LVT
Use	Commercial	Commercial	Commercial
Wear Layer	22 mil (0.55mm)	22 mil (0.55mm)	22 mil (0.55mm)
Edge Detail	Micro-Bevel Edge	Micro-Bevel Edge	Square Edge
Finish	Urethane Coating with Ceramic Bead Particles	Urethane Coating with Ceramic Bead Particles	Urethane Coating with Ceramic Bead Particles
Gauge	0.098" (2.5mm)	0.098" (2.5mm)	0.098" (2.5mm)
Pieces/Carton	12	16	9
Coverage/Piece	3 Sq.Ft. (0.278 Sq.M.)	2.25 Sq.Ft. (0.209 Sq.M.)	4 Sq.Ft. (0.371 Sq.M.)
Coverage/Carton	36 Sq.Ft. (3.34 Sq.M.)	36 Sq.Ft. (3.34 Sq.M.)	36 Sq.Ft. (3.34 Sq.M.)
Coverage/Pallet	45 Cartons/Pallet (1,620 Sq.Ft./150.3 Sq.M.)	48 Cartons/Pallet (1,728 Sq.Ft./160.32 Sq.M.)	20 Cartons/Pallet (720 Sq.Ft./66.8 Sq.M.)
Coverage/Container	28 Pallets/Container (45,360 Sq.Ft./4,208.4 Sq.M.)	26 Pallets/Container (44,928 Sq.Ft./4,168.32 Sq.M.)	61 Pallets/Container (43,920 Sq.Ft./4,074.8 Sq.M.)
Aspecta® One Limited Commercial Warranty <sup>1</sup>	Material: 20 Years (100%) Labor: 10 Years (Pro-Rated)	Material: 20 Years (100%) Labor: 10 Years (Pro-Rated)	Material: 20 Years (100%) Labor: 10 Years (Pro-Rated)

NORTH AMERICAN STANDARDS – MANUFACTURING & USAGE (ASTM F1700)			
Standard	Description	Requirements	Results
ASTM F1700	Classification	Refer to Standard	Class III, Type B
ASTM F386	Thickness	±0.005"	Passes Requirements
ASTM F410	Wear Layer Thickness	Commercial Classification: ≥20mil (0.5mm)	Passes Requirements
ASTM F2421/ ASTM F2055	Size & Squareness	Size: ±0.016"/Linear Foot; Squareness: ≤0.010"	Passes Requirements
ASTM F1914	Residual Indentation	Average <8% Maximum - Any Sample ≤10%	Surpasses Requirements
ASTM F137	Flexibility	No cracks/breaks (1"/25.4mm Mandrel)	Surpasses Requirements
ASTM F2199	Dimensional Stability	≤0.020"/Linear Foot	Surpasses Requirements
ASTM F925	Chemical Resistance	No more than "Slight Change"	Passes Requirements
ASTM F1514	Resistance to Heat	Average & Max ΔE <8.0	Surpasses Requirements
ASTM F1515	Resistance to Light	Average & Max ΔE <8.0	Surpasses Requirements

NORTH AMERICAN STANDARDS – SAFETY & PERFORMANCE			
Standard	Description	Requirements	Results
ASTM E648	Radiant Panel (Critical Radiant Flux)	Class I: ≥ 0.45 W/cm <sup>2</sup>	Passes Requirements
ASTM E662	Smoke Density	Flaming & Non-Flaming ≤ 450	Passes Requirements
CAN/ULC S102.2-10 <sup>2</sup>	Surface Burning Characteristics, Canada	Use dependent	Flame Spread Rating (FSR): ≤15 Smoke Developed Class. (SDC): ≤150
CDPH/EHLB Standard v1.2	VOCs/TVOCs, Formaldehyde	Refer to Standard	Passes Requirements
ASTM F963	Heavy Metals	Refer to Standard	Passes Requirements
ASTM D7823/CPSC-CH-C1001-09.3	Pthalates	Refer to CPSIA <sup>3</sup>	Passes Requirements
ASTM D2047	Coefficient of Friction / Slip Resistance	N/A	≥0.6 (Dry)
ASTM F970	Static Load	±0.005", 250-Lbs. Load	Passes Requirements
SIM Test	Static Load Limit	Test to Limit (±0.005")	≥1,000 lbs.
ASTM D4060	Abrasion Resistance	N/A	≥20,000 cycles (Varies with emboss)

NORTH AMERICAN STANDARDS – SOUND					
Standard	Description	Product(s) Tested	Assembly	IBC Requirements <sup>4</sup>	Results
ASTM E90 & ASTM E413	Airborne Sound Transmission Loss of Building Partitions and Elements (STC/Sound Transmissions Class)	Aspecta® One + Prevail® GDP	6" Concrete Slab	STC ≥50	STC 51 (Surpasses Requirements)
			6" Concrete Slab + Drop-Ceiling	STC ≥50	STC 61 (Surpasses Requirements)
ASTM E492 & ASTM E989	Impact Sound Transmission Through Floor-Ceiling Assemblies (IIC/Impact Insulation Class)	Aspecta® One + Prevail® GDP	6" Concrete Slab	IIC ≥50	IIC 50 (Passes Requirements)
			6" Concrete Slab + Drop-Ceiling	IIC ≥50	IIC 70 (Surpasses Requirements)
ASTM E2179 & ASTM E989	Effectiveness of Floor Coverings in Reducing Impact Sound Transmission (ΔIIC / ΔImpact Insulation Class)	Aspecta® One + Prevail® GDP	6" Concrete Slab	N/A	ΔIIC 21
			Aspecta® One	N/A	ΔIIC 14

### FOOTNOTES

- 1) **Aspecta® One Limited Commercial Warranty:** Please see full terms and conditions of our warranties at [www.aspecta flooring.com](http://www.aspecta flooring.com)
- 2) **CAN/ULC S102.2-10:** Results obtained when installed with Prevail® 4000 2-Part Epoxy Adhesive or with Prevail® 6000 PSA (Pressure Sensitive Adhesive)
- 3) **CPSIA:** Consumer Product Safety Improvement Act
- 4) **IBC:** International Building Code





FOLLOW US



**ASPECTA**

Visionary Living Commercial Floors  
75D Carnarvon St,  
Silverwater, 2128,  
NSW, Australia  
Alex Morellato  
Commercial Director  
Tel: +61 (0) 455 557353  
alex@visionary-living.com.au  
Stuart Burnett  
Sales Manager  
Tel: +61 (0) 439 833441  
stuart@visionary-living.com.au

ERME Office:  
ASPECTA BV  
Argon 37a  
4751XC Oud Gastel  
The Netherlands  
Tel: +31 (0) 88 1662500  
info@aspectaflooring.com

**ASPECTAFLOORING.COM**