

## WINDOWS



### BENEFITS

THERMAL PERFORMANCE / DURABILITY / LOW MAINTENANCE /  
AFFORDABILITY / DESIGN FLEXIBILITY / FINISHES & RECYCLABILITY

### APPLICATION

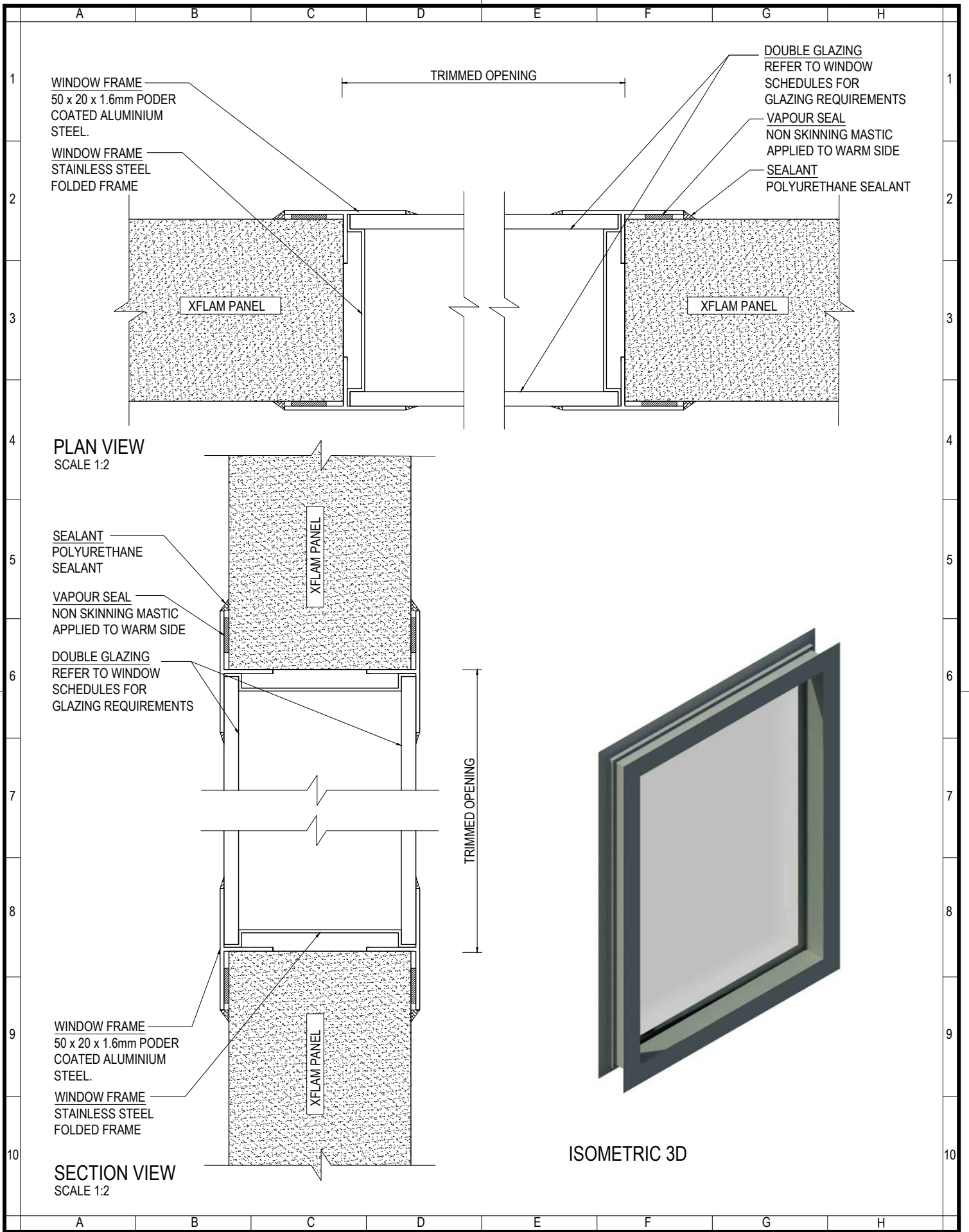
COMMERCIAL / INDUSTRIAL / ARCHITECTURAL / RESIDENTIAL /  
COLD STORAGE / AGRICULTURAL / CLEAN ROOMS / FOOD PROCESSING

# CONTENTS

## WINDOWS:

DOUBLE GLAZED FLUSH	001
PORTHOLE - STANDARD	002
PORTHOLE - ALTERNATIVE	003
SINGLE GLAZED - STANDARD	004
DOUBLE GLAZED - STANDARD	005
SINGLE GLAZED - CLEAN SERIES	006
DOUBLE GLAZED - CLEAN SERIES	007
STAINLESS STEEL - CLEAN SERIES	008
THERMAL PVC - STANDARD	009





PROJECT:



**WINDOWS**  
DOUBLE GLAZED FLUSH

www.askin.net.au

VIC P : 03 9706 3277 WA P : 08 9249 4022  
SA P : 08 8252 7188 QLD P : 07 3718 9500  
NSW P : 02 4774 1255 NT P : 08 8947 3326

Revision

-	-	-
-	-	-
-	-	-
-	-	-
-	-	-
-	-	-
-	-	-
-	-	-
-	-	-
-	-	-

Checked By

Scale

A SHANNON

1:2

Drawn By

Sheet size

T HERATH

A4

Issue date

Revision

20.10.2015

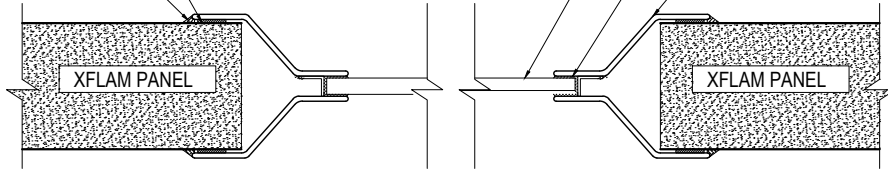
-

Drawing No.

001

VAPOUR SEAL  
NON SKINNING  
MASTIC APPLIED  
TO WARM SIDE  
WATER SEAL  
POLYURETHANE  
SEALANT

GLAZING  
REFER TO WINDOW  
SCHEDULES FOR GLAZING  
REQUIREMENTS  
SEALANT  
WET GLAZED  
WINDOW FRAME  
1.6mm POWDER COATED  
ALUMINIUM

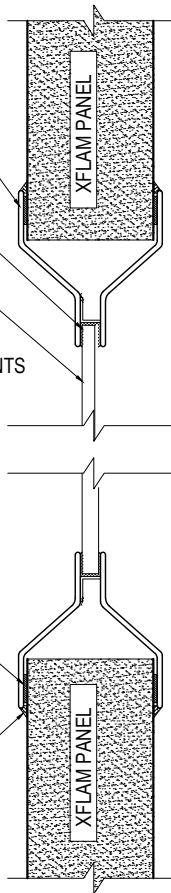


PLAN VIEW  
SCALE 1:3

TRIMMED OPENING

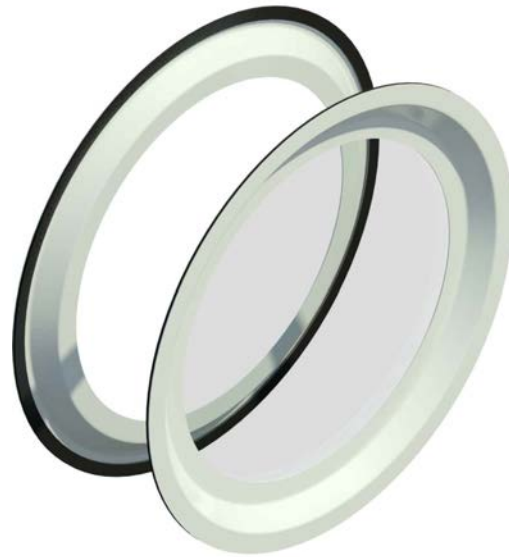
WINDOW FRAME  
1.6mm POWDER  
COATED ALUMINIUM  
SEALANT  
WET GLAZED  
GLAZING  
REFER TO WINDOW  
SCHEDULES FOR  
GLAZING REQUIREMENTS

VAPOUR SEAL  
NON SKINNING  
MASTIC APPLIED  
TO WARM SIDE  
WATER SEAL  
POLYURETHANE  
SEALANT



SECTION VIEW  
SCALE 1:3

TRIMMED OPENING



ISOMETRIC 3D



PROJECT:  
**WINDOWS**  
PORTHOLE

www.askin.net.au  
VIC P : 03 9706 3277 WA P : 08 9249 4022  
SA P : 08 8252 7188 QLD P : 07 3718 9500  
NSW P : 02 4774 1255 NT P : 08 8947 3326

Revision

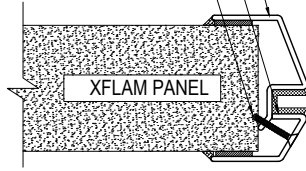
-	-	-
-	-	-
-	-	-
-	-	-
-	-	-
-	-	-
-	-	-
-	-	-
-	-	-
-	-	-

Checked By A SHANNON	Scale 1:3
Drawn By T HERATH	Sheet size A4
Issue date 20.10.2015	Revision -
Drawing No. 002	

WINDOW FRAME  
1.6mm POWDER  
COATED ALUMINIUM.

SEALANT  
WET GLAZED

FIXING  
COUNTERSUNK SCREW

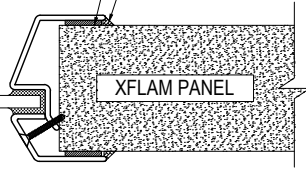


XFLAM PANEL

GLAZING  
REFER TO WINDOW  
SCHEDULES FOR GLAZING  
REQUIREMENTS

VAPOUR SEAL  
NON SKINNING MASTIC  
APPLIED TO WARM SIDE

WATER SEAL  
POLYURETHANE SEALANT



XFLAM PANEL

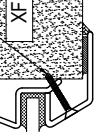
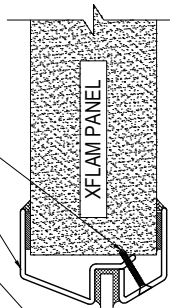
PLAN VIEW  
SCALE 1:3

TRIMMED OPENING

FIXING  
COUNTERSUNK SCREW

WINDOW FRAME  
1.6mm POWDER  
COATED ALUMINIUM.

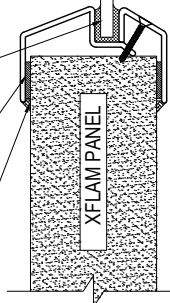
GLAZING  
REFER TO WINDOW  
SCHEDULES FOR GLAZING  
REQUIREMENTS



SEALANT  
WET GLAZED

VAPOUR SEAL  
NON SKINNING MASTIC  
APPLIED TO WARM SIDE

WATER SEAL  
POLYURETHANE SEALANT



TRIMMED OPENING

SECTION VIEW  
SCALE 1:3

ISOMETRIC 3D



-	-	-
-	-	-
-	-	-
-	-	-
-	-	-
-	-	-
-	-	-
-	-	-
-	-	-
-	-	-



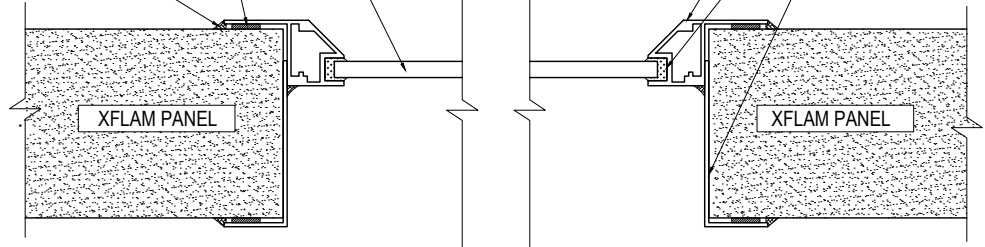
A B C D E F G H

1  
2  
3  
4  
5  
6  
7  
8  
9  
10

1  
2  
3  
4  
5  
6  
7  
8  
9  
10

GLAZING  
REFER TO WINDOW  
SCHEDULES FOR GLAZING  
REQUIREMENTS  
VAPOUR SEAL  
NON SKINNING MASTIC  
APPLIED TO WARM SIDE  
WATER SEAL  
POLYURETHANE  
SEALANT

FRAME  
WINDOW FRAME  
EXTRUSION  
SEALANT  
WET GLAZED  
FRAME  
1.6mm FOLDED  
STEEL SECTION

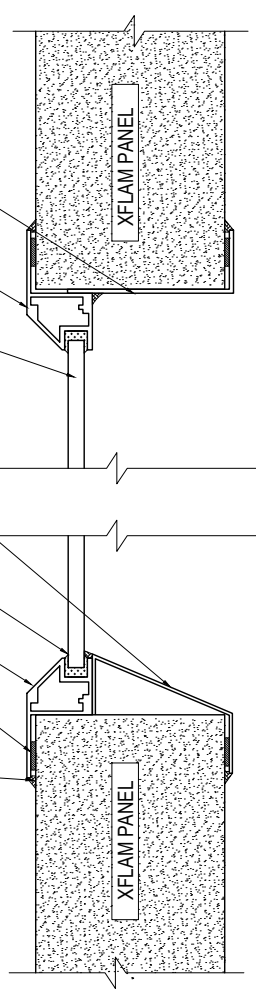


PLAN VIEW  
SCALE 1:3

TRIMMED OPENING

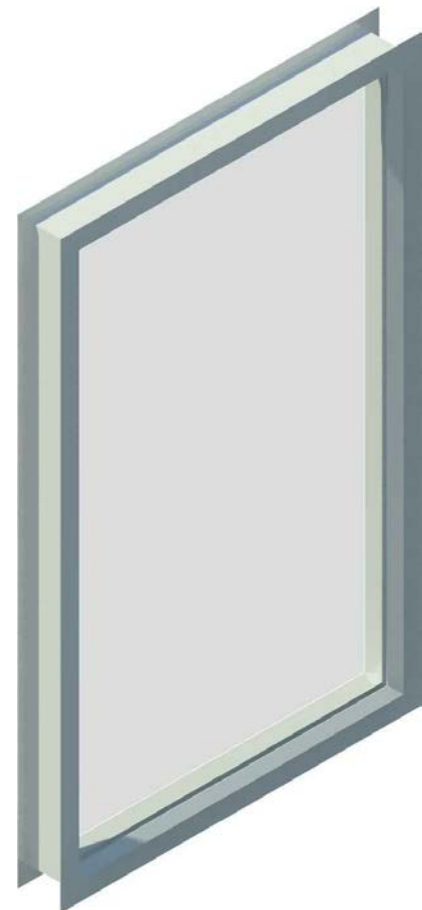
FRAME  
1.6mm FOLDED  
STEEL SECTION  
FRAME  
WINDOW FRAME  
EXTRUSION  
GLAZING  
REFER TO WINDOW  
SCHEDULES FOR GLAZING  
REQUIREMENTS

FRAME  
1.6mm FOLDED  
STEEL SECTION  
SEALANT  
WET GLAZED  
FRAME  
WINDOW FRAME  
EXTRUSION  
VAPOUR SEAL  
NON SKINNING MASTIC  
APPLIED TO WARM SIDE  
WATER SEAL  
POLYURETHANE  
SEALANT



SECTION VIEW  
SCALE 1:3

TRIMMED OPENING



ISOMETRIC 3D

A B C D E F G H

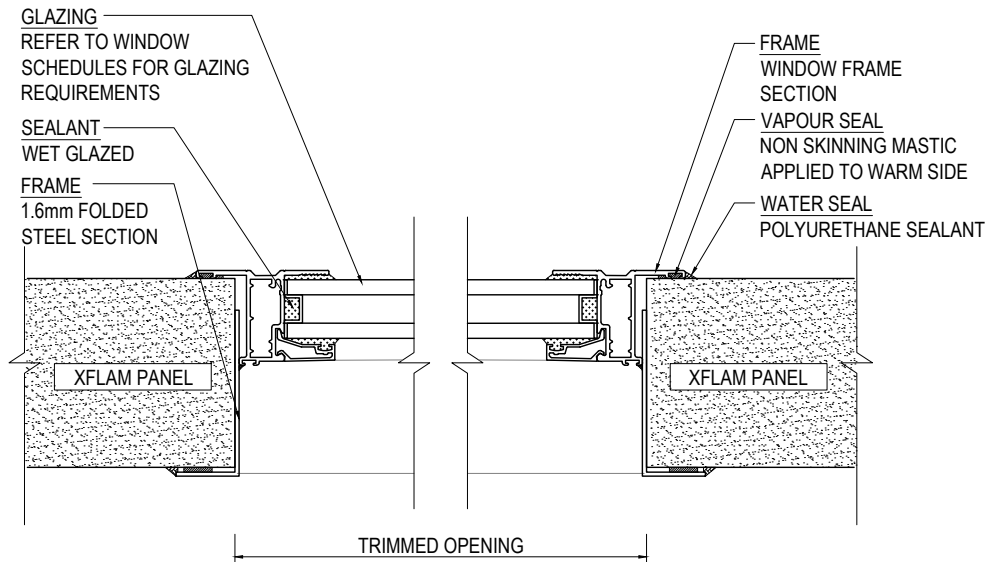


PROJECT:  
**WINDOWS**  
SINGLE GLAZED - STANDARD

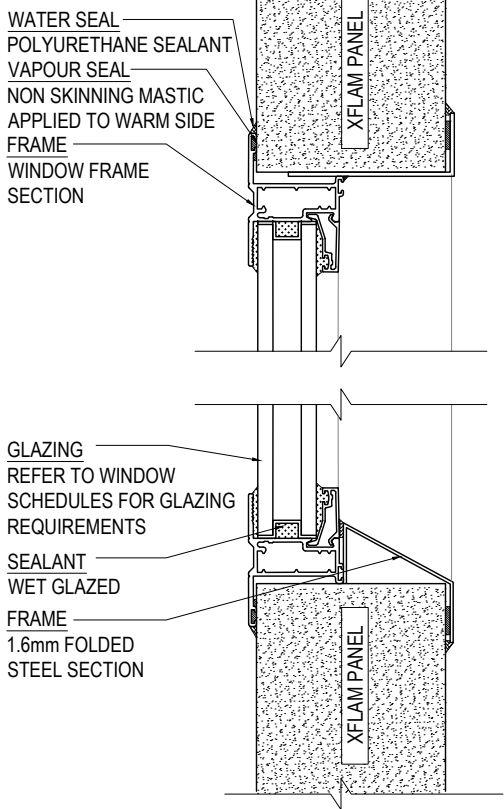
www.askin.net.au  
VIC P : 03 9706 3277 WA P : 08 9249 4022  
SA P : 08 8252 7188 QLD P : 07 3718 9500  
NSW P : 02 4774 1255 NT P : 08 8947 3326

Revision		
-	-	-
-	-	-
-	-	-
-	-	-
-	-	-
-	-	-
-	-	-
-	-	-

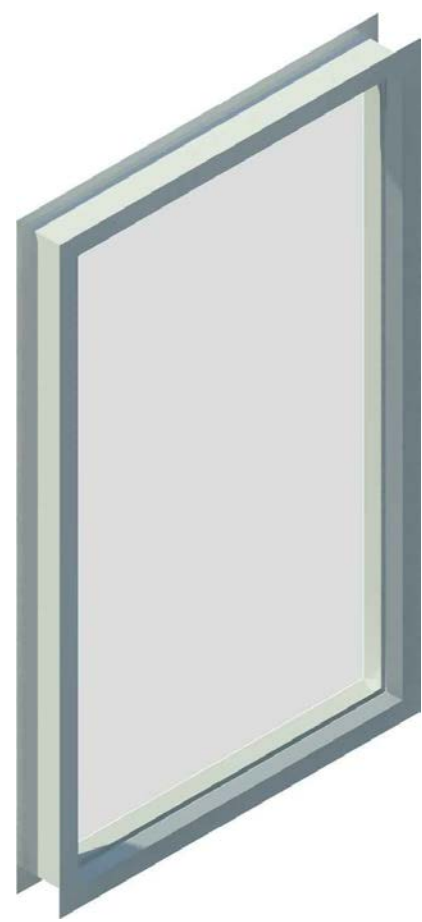
Checked By A SHANNON	Scale 1:3
Drawn By T HERATH	Sheet size A4
Issue date 20.10.2015	Revision -
Drawing No. 004	



PLAN VIEW  
SCALE 1:3



SECTION VIEW  
SCALE 1:3



ISOMETRIC 3D

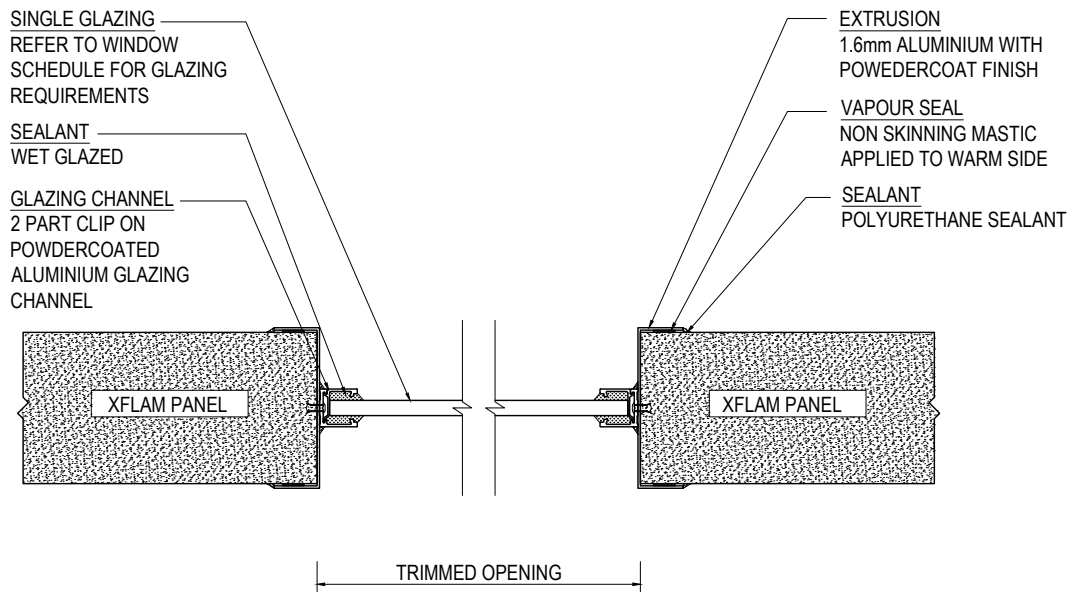


PROJECT:  
**WINDOWS**  
DOUBLE GLAZED - STANDARD

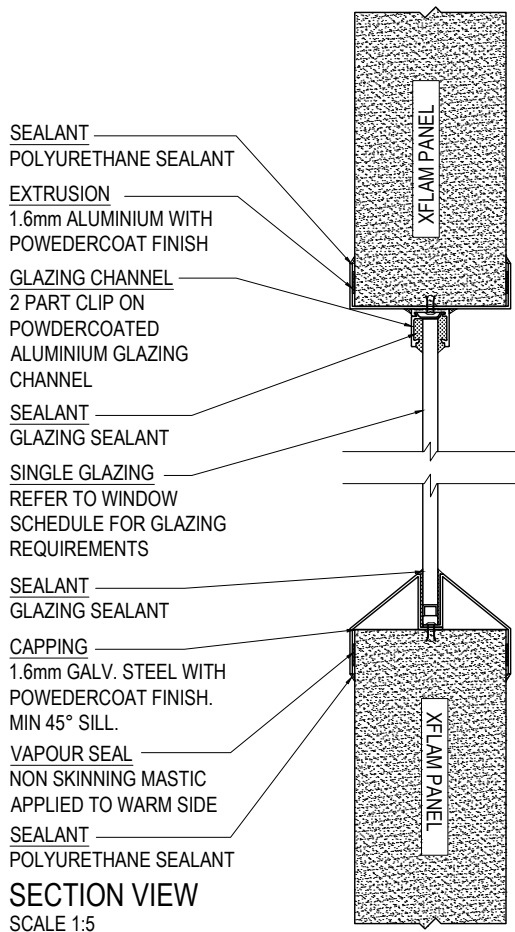
www.askin.net.au  
VIC P : 03 9706 3277 WA P : 08 9249 4022  
SA P : 08 8252 7188 QLD P : 07 3718 9500  
NSW P : 02 4774 1255 NT P : 08 8947 3326

Revision		
-	-	-
-	-	-
-	-	-
-	-	-
-	-	-
-	-	-
-	-	-
-	-	-

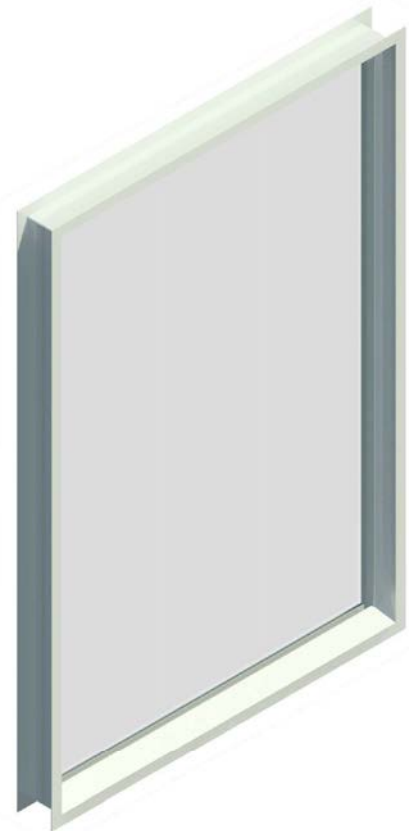
Checked By A SHANNON	Scale 1:3
Drawn By T HERATH	Sheet size A4
Issue date 20.10.2015	Revision -
Drawing No. 005	



**PLAN VIEW**  
SCALE 1:5



**SECTION VIEW**  
SCALE 1:5



**ISOMETRIC 3D**  
SCALE: NTS



PROJECT:  
**WINDOWS**  
SINGLE GLAZED - CLEAN  
SERIES

www.askin.net.au

VIC P : 03 9706 3277 WA P : 08 9249 4022  
SA P : 08 8252 7188 QLD P : 07 3718 9500  
NSW P : 02 4774 1255 NT P : 08 8947 3326

Revision		
-	-	-
-	-	-
-	-	-
-	-	-
-	-	-
-	-	-
-	-	-
-	-	-

Checked By <b>A SHANNON</b>	Scale 1:5
Drawn By <b>T HERATH</b>	Sheet size A4
Issue date 20.10.2015	Revision -
Drawing No. <b>006</b>	



DOUBLE GLAZING  
REFER TO WINDOW  
SCHEDULES FOR GLAZING  
REQUIREMENTS

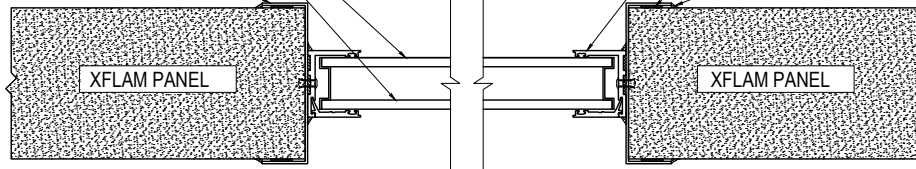
EXTRUSION  
1.6mm ALUMINIUM WITH  
POWDERCOAT FINISH

TRIMMED OPENING

GLAZING CHANNEL  
2 PART CLIP ON POWDERCOATED  
ALUMINIUM GLAZING CHANNEL

VAPOUR SEAL  
NON SKINNING MASTIC  
APPLIED TO WARM SIDE

SEALANT  
POLYURETHANE SEALANT



PLAN VIEW  
SCALE 1:5

SEALANT  
POLYURETHANE SEALANT

EXTRUSION  
1.6mm ALUMINIUM WITH  
POWDERCOAT FINISH

GLAZING CHANNEL  
2 PART CLIP ON  
POWDERCOATED ALUMINIUM  
GLAZING CHANNEL

DOUBLE GLAZING  
REFER TO WINDOW  
SCHEDULES FOR GLAZING  
REQUIREMENTS

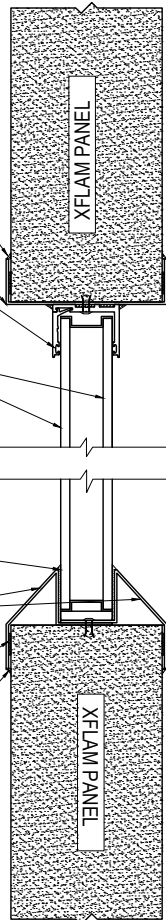
SEALANT  
POLYURETHANE SEALANT

CAPPING  
1.6mm GALV. STEEL WITH  
POWDERCOAT FINISH.  
MIN 45° SILL.

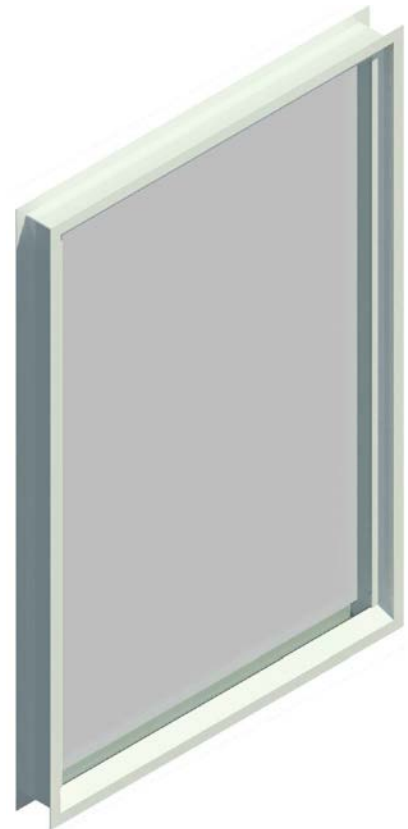
VAPOUR SEAL  
NON SKINNING MASTIC  
APPLIED TO WARM SIDE

SEALANT  
POLYURETHANE SEALANT

SECTION VIEW  
SCALE 1:5



TRIMMED OPENING



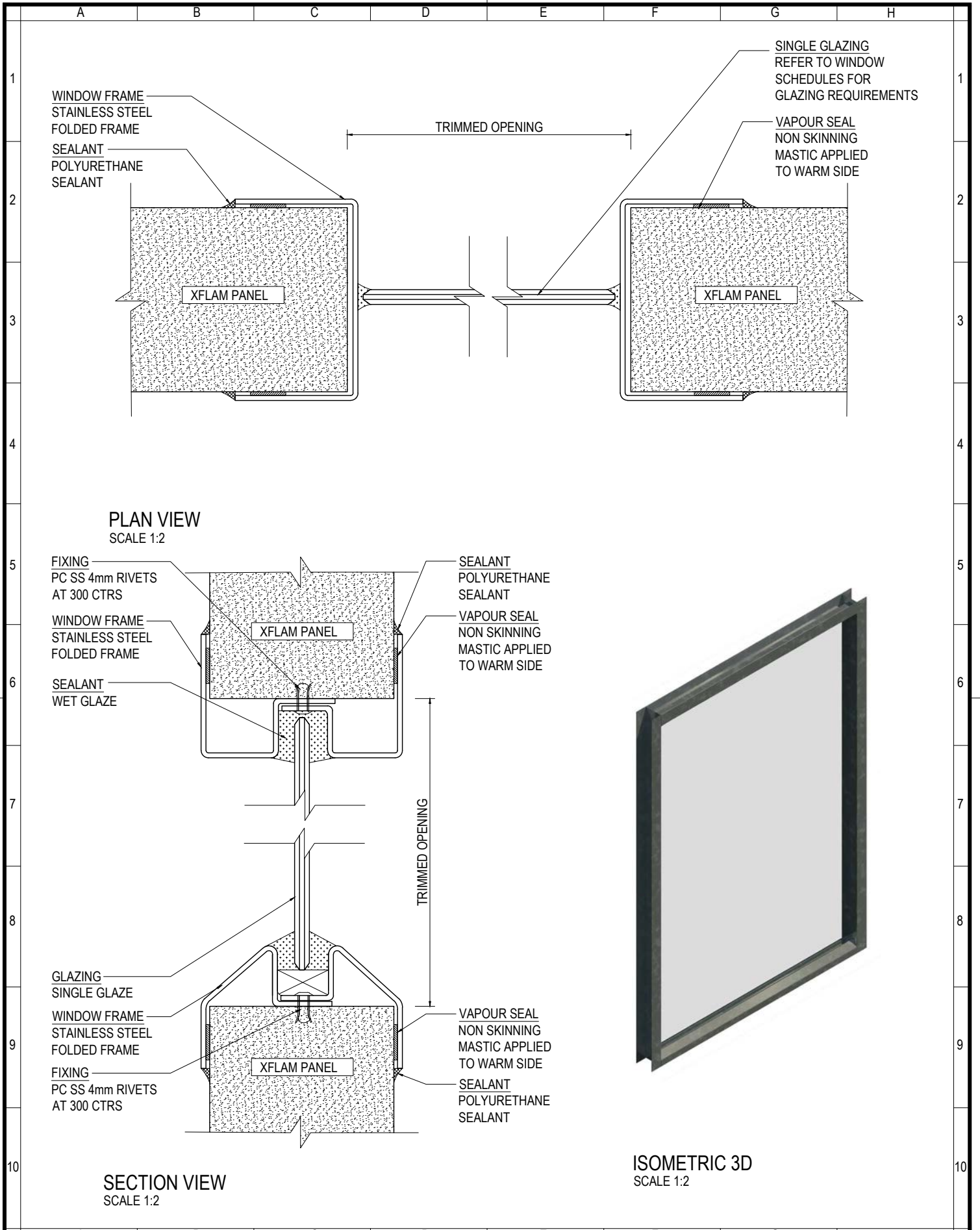
**ASKIN**  
Performance Panels

www.askin.net.au  
VIC P : 03 9706 3277 WA P : 08 9249 4022  
SA P : 08 8252 7188 QLD P : 07 3718 9500  
NSW P : 02 4774 1255 NT P : 08 8947 3326

PROJECT:  
**WINDOWS**  
DOUBLE GLAZED - CLEAN  
SERIES

Revision		
-	-	-
-	-	-
-	-	-
-	-	-
-	-	-
-	-	-
-	-	-
-	-	-

Checked By <b>A SHANNON</b>	Scale 1:5
Drawn By <b>T HERATH</b>	Sheet size A4
Issue date 20.10.2015	Revision -
Drawing No. <b>007</b>	

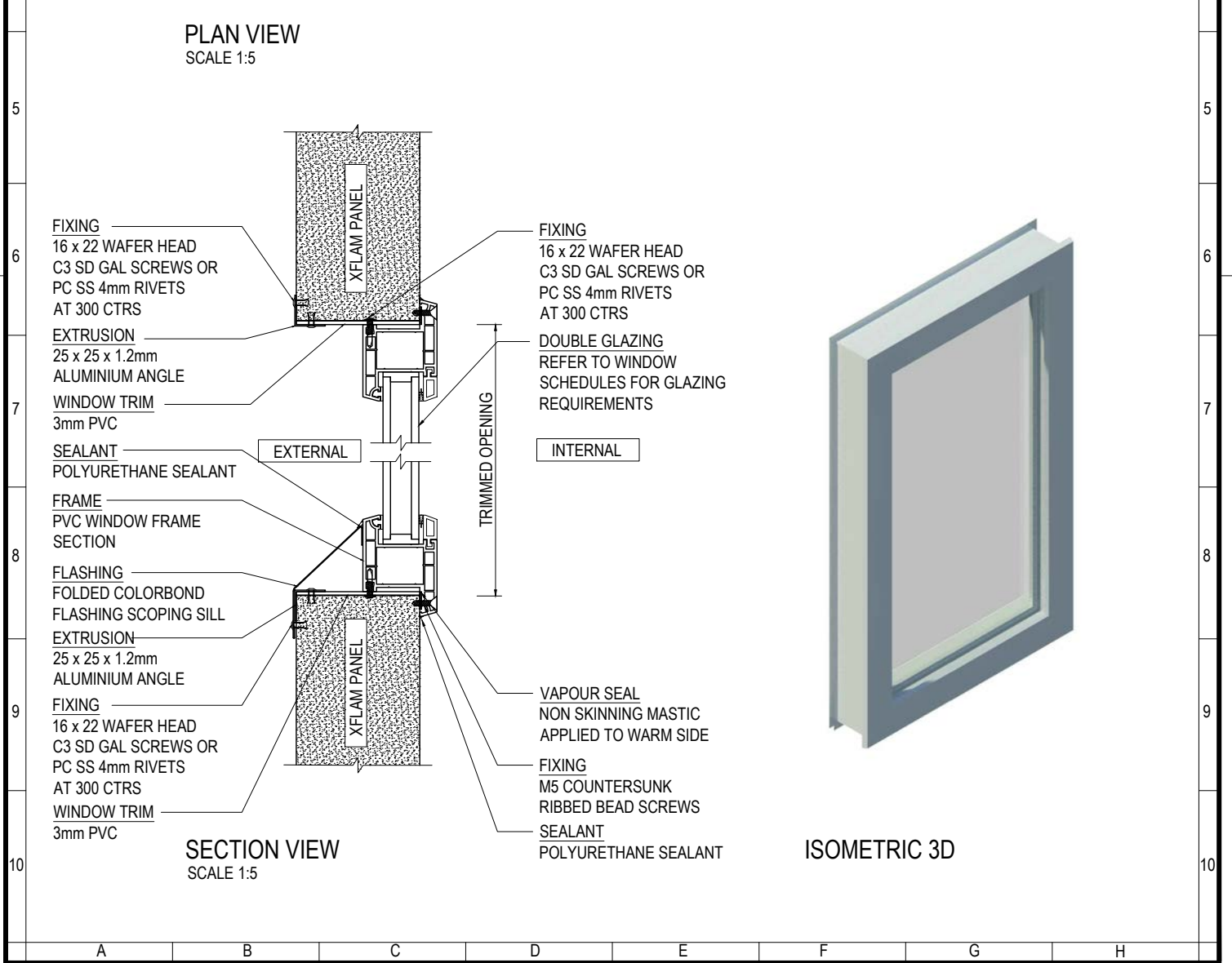
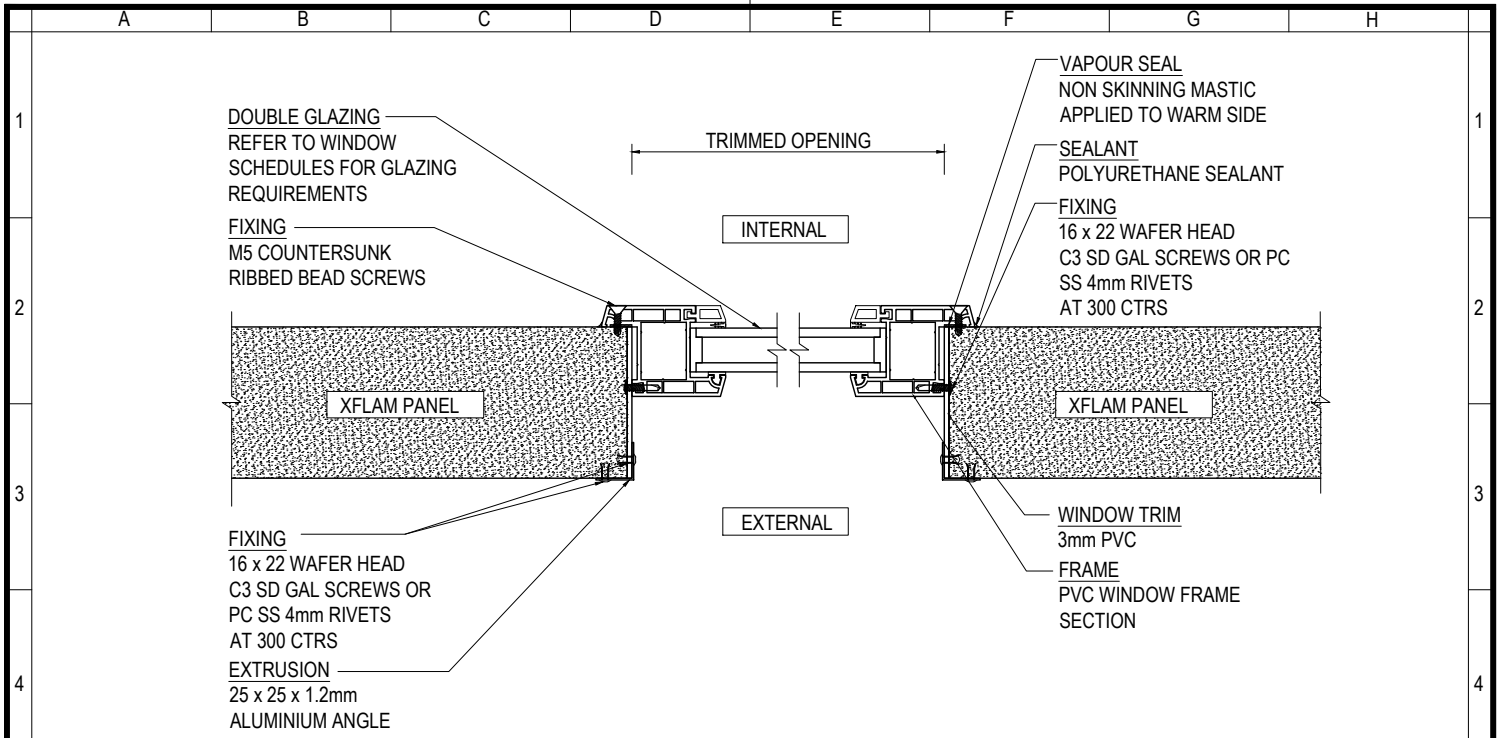


PROJECT:  
**WINDOWS**  
 STAINLESS STEEL - CLEAN  
 SERIES

www.askin.net.au  
 VIC P : 03 9706 3277 WA P : 08 9249 4022  
 SA P : 08 8252 7188 QLD P : 07 3718 9500  
 NSW P : 02 4774 1255 NT P : 08 8947 3326

Revision	Checked By	Scale
-	A SHANNON	1:2
-	T HERATH	Sheet size
-	20.10.2015	Revision
-		
-		
-		
-		
-		
-		

Checked By	Scale
A SHANNON	1:2
Drawn By	Sheet size
T HERATH	A4
Issue date	Revision
20.10.2015	-
Drawing No.	
	008



**PROJECT:**  
**WINDOWS**  
**THERMAL PVC WINDOWS**

www.askin.net.au  
VIC P : 03 9706 3277 WA P : 08 9249 4022  
SA P : 08 8252 7188 QLD P : 07 3718 9500  
NSW P : 02 4774 1255 NT P : 08 8947 3326

Revision	Checked By	Scale
-	A SHANNON	1:5
-	Drawn By	Sheet size
-	T HERATH	A4
-	Issue date	Revision
-	20.10.2015	-
-	Drawing No.	009



**FREE CALL 13000 ASKIN**  
Email: [contact@askin.net.au](mailto:contact@askin.net.au)  
[www.askin.net.au](http://www.askin.net.au)

**ASKIN GROUP**  
150 Albert Road  
South Melbourne, VIC, 3205  
Phone: +61 3 8769 4816  
Email: [contact@askin.net.au](mailto:contact@askin.net.au)

**WESTERN AUSTRALIA**  
1 Denninup Way  
Malaga, WA, 6090  
Phone: +61 8 9249 4022  
Email: [wa@askin.net.au](mailto:wa@askin.net.au)

**QUEENSLAND**  
129 Cobalt Street  
Carole Park, QLD 4300  
Phone: +61 7 3718 9500  
Email: [qld@askin.net.au](mailto:qld@askin.net.au)

**VICTORIA & TASMANIA**  
270 - 280 Hammond Road  
Dandenong South, VIC, 3175  
Phone: +61 3 8769 4888  
Email: [vic@askin.net.au](mailto:vic@askin.net.au)

**SA & NT**  
162a Philip Hwy  
Elizabeth South, SA, 5112  
Phone: +61 8 8252 7188  
Email: [sa@askin.net.au](mailto:sa@askin.net.au)

**NSW & ACT**  
100 Peter Brock Drive  
Eastern Creek, NSW, 2766  
Phone: +61 2 8825 2598  
Email: [nsw@askin.net.au](mailto:nsw@askin.net.au)