



Projects

Proyectos

Terminology / Terminología

A: Air / Aire

Arg: Argon

CA: California interlayer / Film California

C-PVB: Colored PVB / Butiral de Color

DE: Deep Etching / Grabado, matizado en profundidad

E #1: Etched on surface 1 / Matizado en cara 1

E #4: Etched on surface 4 / Matizado en cara 4

F-PVB: Frosted PVB / Butiral matizado

KR: Krypton / Kriptón

LE #3: Low-E on surface #3 / Bajo emisivo en cara 3

LE #4: Low-E on surface #4 / Bajo emisivo en cara 4

LE #5: Low-E on surface #5 / Bajo emisivo en cara 5

M: Marble / Mármol

RG: Rolled glass / Vidrio impreso

SC #1: Solar control coating on surface #1 / Capa control solar en cara 1

SC #4: Solar control coating on surface #4 / Capa control solar en cara 4

Ser. #2: Screen-printed on surface #2 / Serigrafía en cara 2

Ser. #3: Screen-printed on surface #3 / Serigrafía en cara 3

Ser. #4: Screen-printed on surface #4 / Serigrafía en cara 4

SG: SentryGlas® interlayer / Lámina SentryGlas®

t: Heat-strengthened / Termoendurecido

T: Tempered / Templado

TQ: Chemically tempered / Templado químico



La Colline de l'Automobile
Paris
1992

Architect / Arquitecto
MBA Chaix et Morel

Glazer / Fachadista
Ingenierie Boga

Product / Producto
Crisunid®
Annealed compound curve glass
Curvado recocido esférico
8+8 mm

Projects

Proyectos

P&C

Berlin
1995

Architect / Arquitecto
Prof. Böm

Glazer / Fachadista
MBM

Product / Producto
Crisunid®
Curved annealed
Curvado recocido
10+10 mm



Metro "Fosterito"
Bilbao
1996

Architect / Arquitecto
Norman Foster & Partners

Glazer / Fachadista
Cristalmin

Product / Producto
Crisunid®
Curved annealed
Curvado recocido
8+8 mm



Projects

Proyectos

Aéroport Charles de Gaulle
Roissy
1997

Architect / Arquitecto
Paul Andreu

Glazer / Fachadista
Le Mur en Verre

Product / Producto
Crisunid®
Curved annealed
Curvado recocido
8+8 mm



Projects

Proyectos

Kursaal

San Sebastián

1999

Architect / Arquitecto

Rafael Moneo

Glazer / Fachadista

Umaran

Product / Producto

Crisunid®

4 Flutex+19 Extraclear E #4



Projects

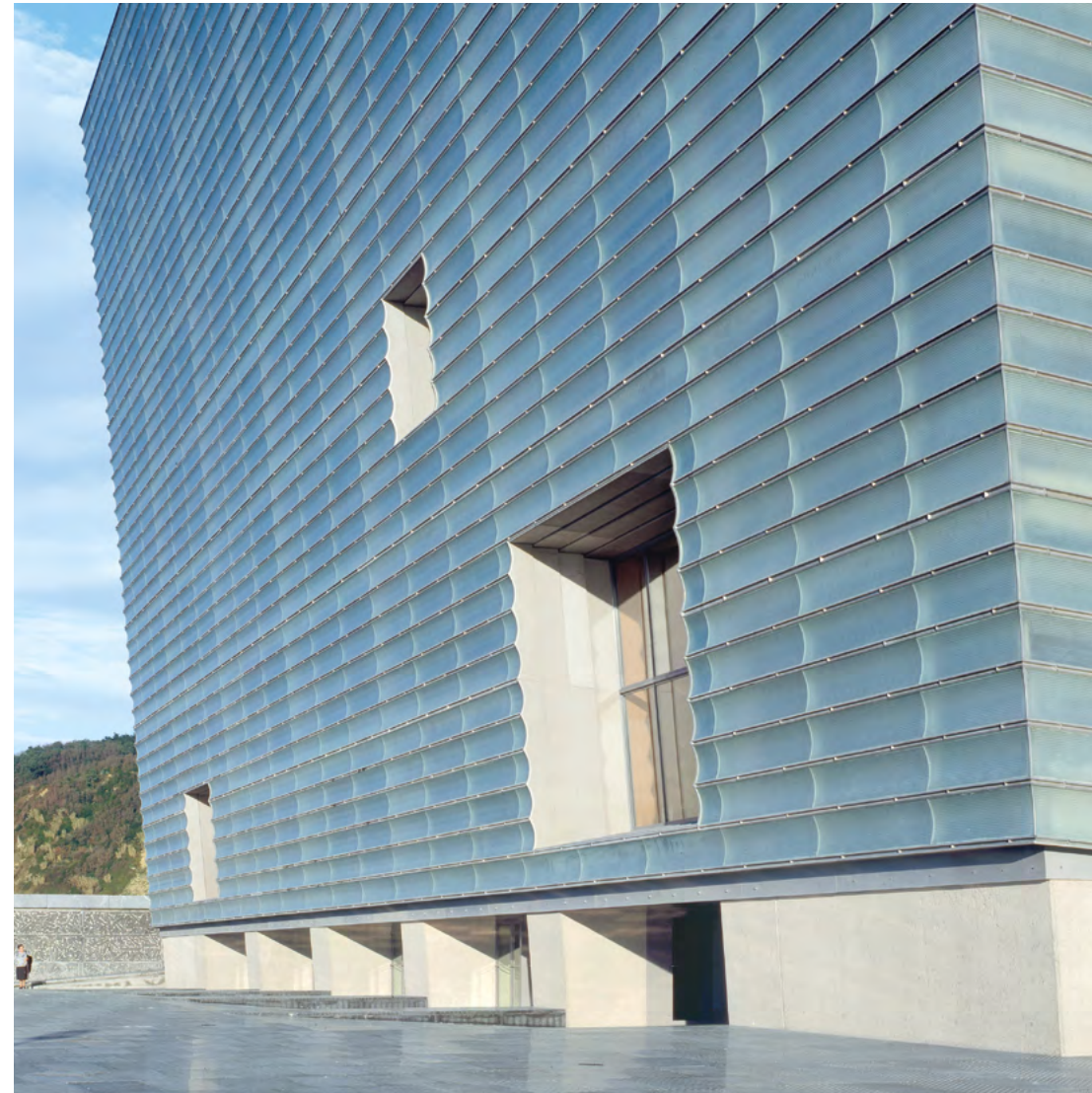
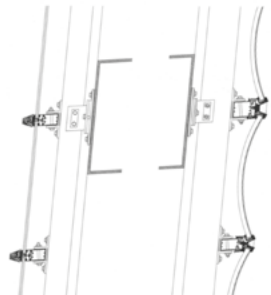
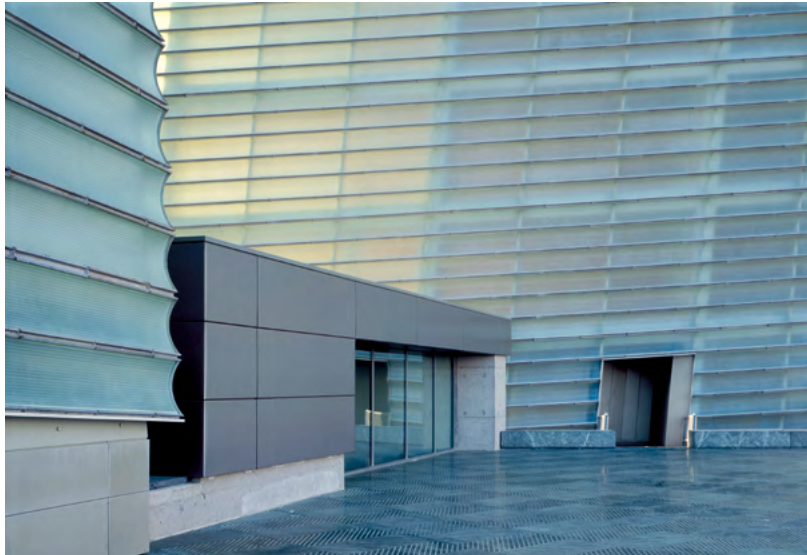
Proyectos

Kursaal
San Sebastián
1999

Architect / Arquitecto
Rafael Moneo

Glazer / Fachadista
Umaran

Product / Producto
Crisunid®
4 Flutex+19 Extraclear E #4



Projects

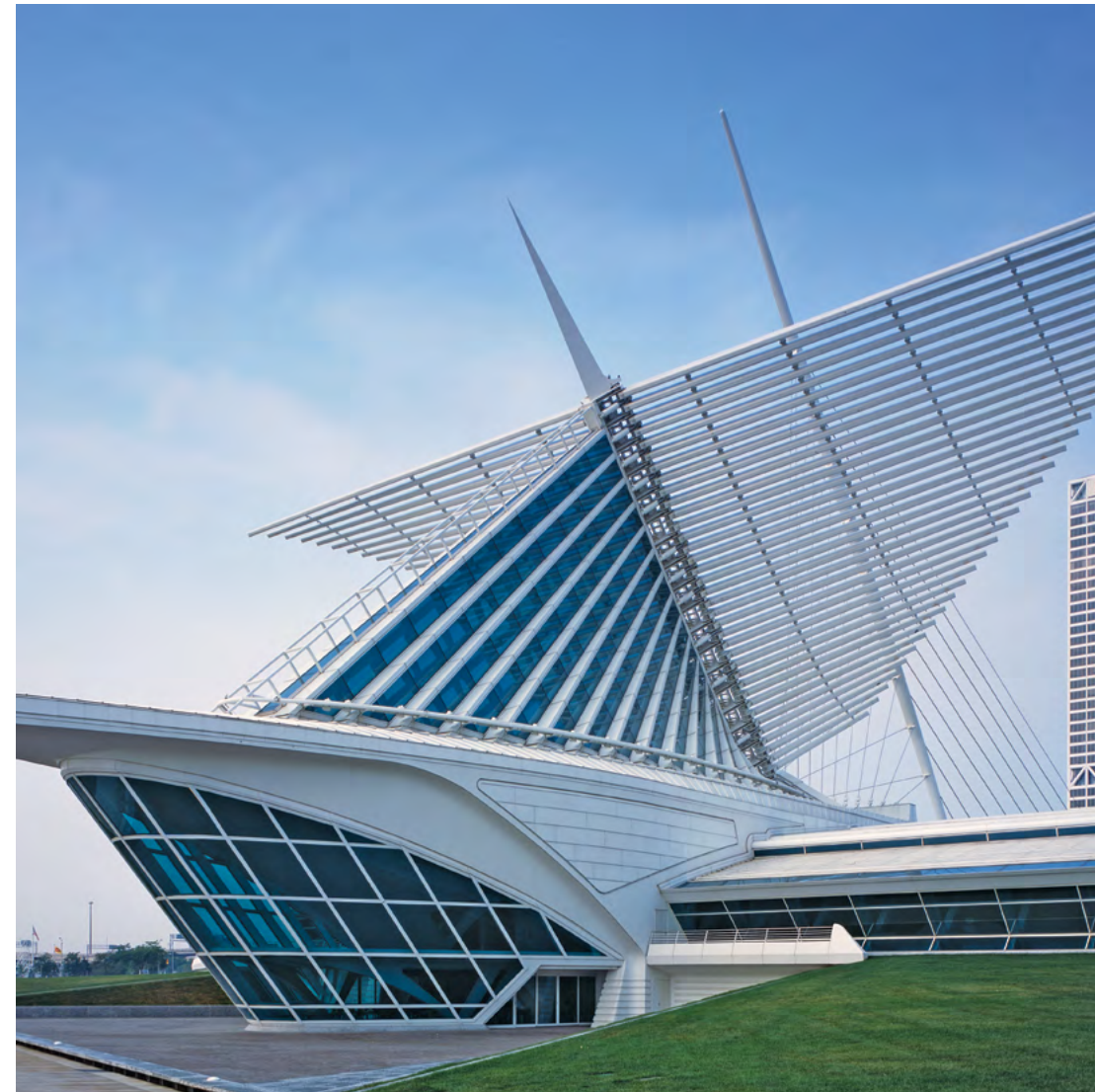
Proyectos

Milwaukee Art Museum
Milwaukee
2001

Architect / Arquitecto
Santiago Calatrava

Glazer / Fachadista
Super Sky

Product / Producto
Crisunid® California
6+6 CA C-PVB (12A) 6+6 mm LE #5



Projects

Proyectos

Prada Aoyama Epicenter
Tokio
2003

Architect / Arquitecto
Herzog & de Meuron

Glazer / Fachadista
Josef Gartner GmbH

Product / Producto
Crisunid®
Annealed compound curve glass
Curvado recocido geometria
compleja
6+6 (12A)+12 mm



Projects

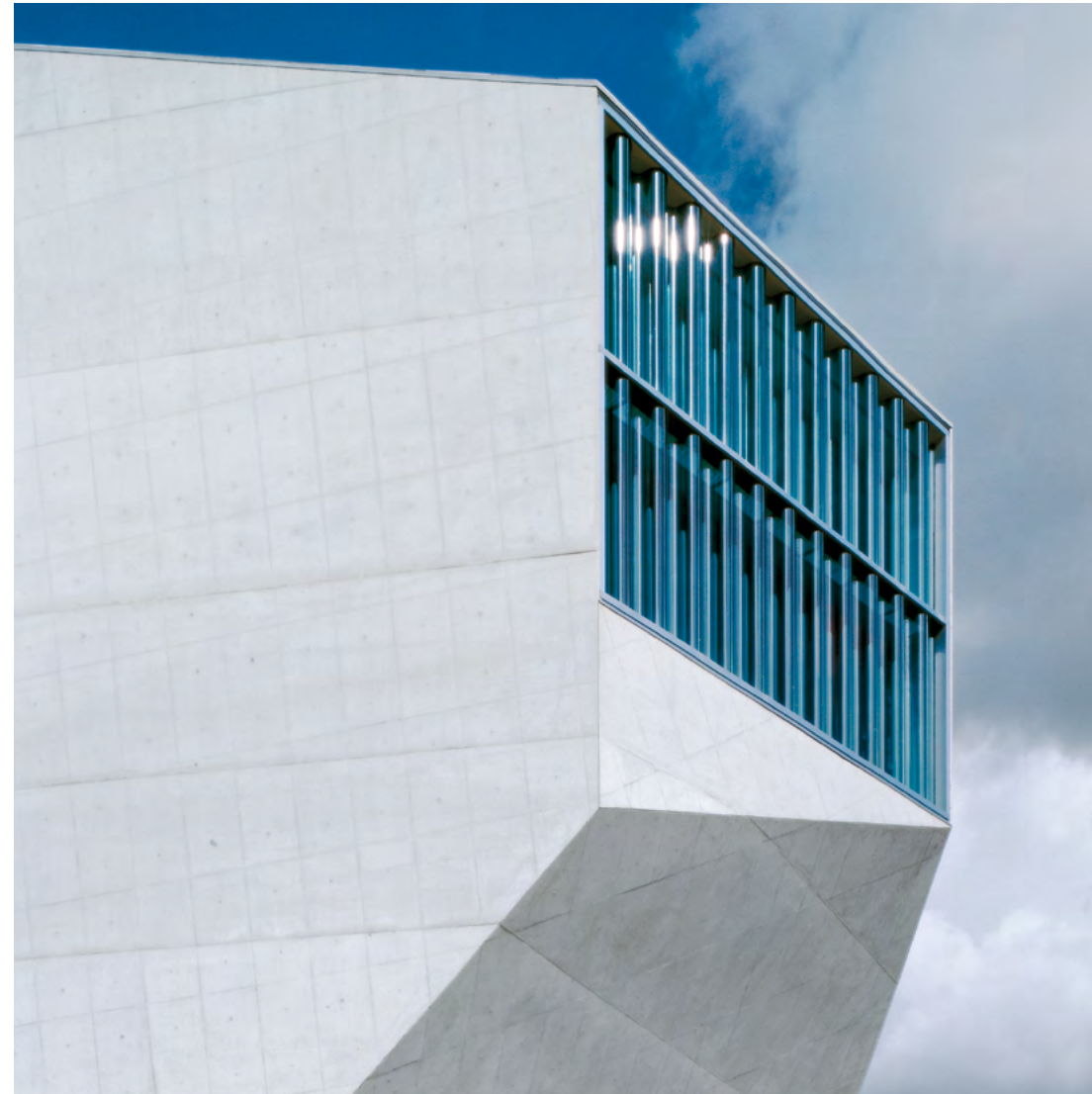
Proyectos

Casa da Música
Porto
2004

Architect / Arquitecto
OMA/Rem Koolhaas

Glazer / Fachadista
Facal

Product / Producto
Crisunid® California
Curved annealed
Curvado recocado
10+10 mm
Crisunid® Acoustic
10+10 mm



Projects

Proyectos

San Jose Civic Center
San Jose (CA)
2005

Architect / Arquitecto
Richard Meier & Partners

Glazer / Fachadista
Enclos

Product / Producto
Crisunid® California
6T + 10T mm
Curved 10T + 10T mm



Projects

Proyectos

Pg. de Gràcia 99
Barcelona
2006

Architect / Arquitecto
Carlos Ferrater

Glazer / Fachadista
Talleres Inox

Product / Producto
Crimar®
5M+5+5 mm Extraclear



Projects

Proyectos

Fira de Barcelona – Gran Via
Barcelona
2006

Architect / Arquitecto
Toyo Ito & Associates, Architects

Glazer / Fachadista
Folcrá

Product / Producto
Crisunid® California
10+10 mm Extraclear #1
Cricursa Shield (DFI)®



Projects

Proyectos

Nelson Atkins Museum of Art
Kansas City
2006

Architect / Arquitecto
Steven Holl Architects/BNIM

Glazer / Fachadista
Carter Glass, LLC (façade & interiors)
Bratton Corp. (railings)

Product / Producto
Crisunid® California
5t+5t CA (12A) 6T Extraclear
Crisunid®
6+6 E #1 /#4 Extraclear F-PVB
Critemp®
10T+10T mm E #1 /#4 Extraclear
F-PVB
Cricursa Shield (DFI)®



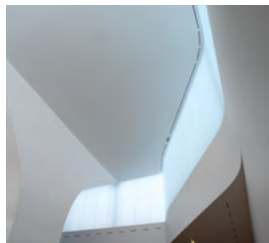
Projects

Proyectos

**Nelson Atkins Museum of Art
(Interiors)**
Kansas City
2006
Architect / Arquitecto
Steven Holl Architects/BNIM

Glazer / Fachadista
Carter Glass, LLC (façade & interiors)
Bratton Corp. (railings)

Product / Producto
Crisunid® California
5t+5t CA (12A) 6T Extraclear
Crisunid®
6+6 E #1 /#4 Extraclear F-PVB
Critemp®
10T+10T mm E #1 /#4 Extraclear
F-PVB
Cricursa Shield (DFI)®



Projects

Proyectos

40 Bond, Apartment Building
New York
2006

Architect / Arquitecto
Herzog & de Meuron

Glazer / Fachadista
W&W Glass, LLC

Product / Producto
Cridecor®
Curved annealed
Curvado recocido
5 Green+5 mm Ser. #4



Projects

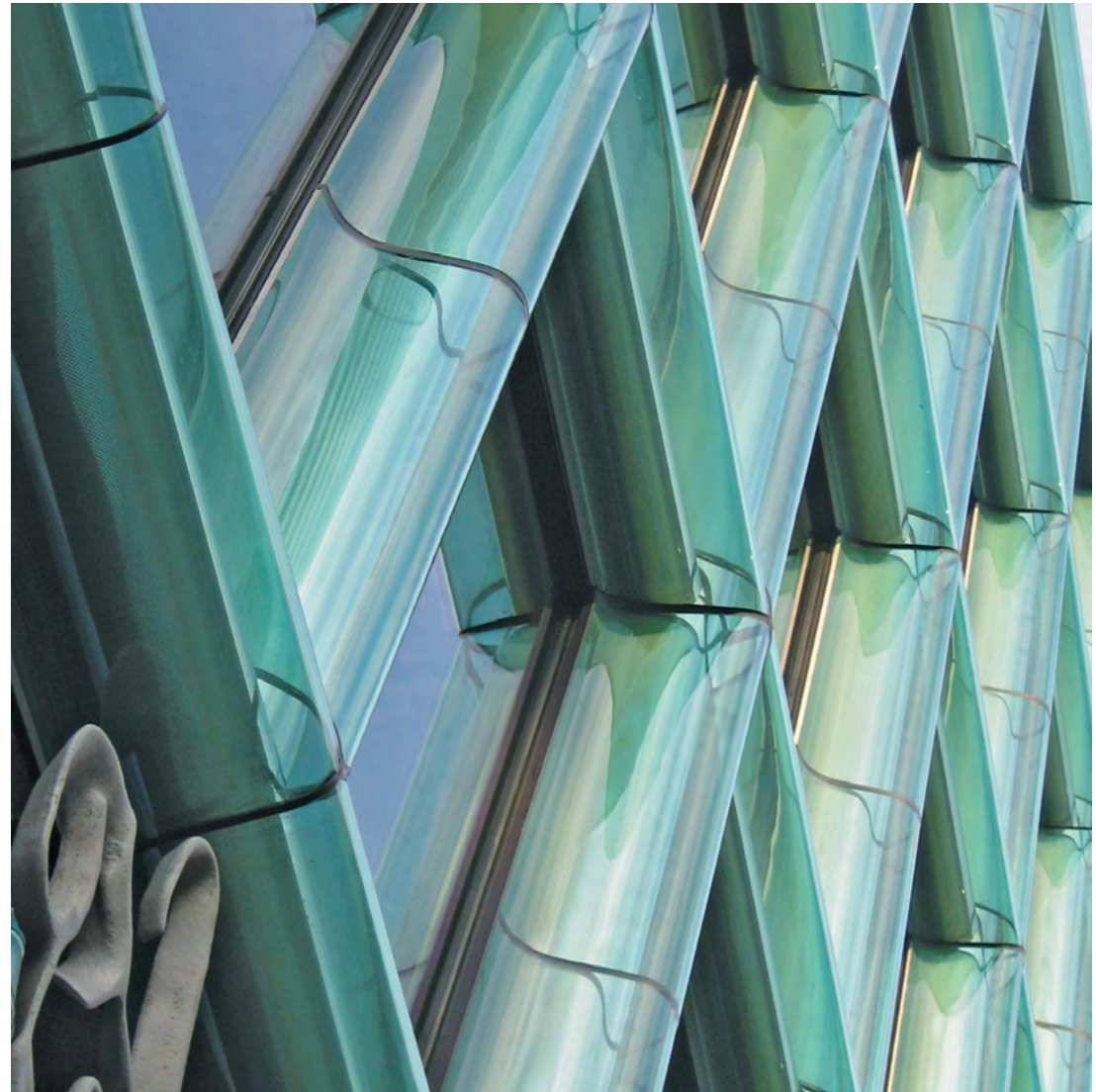
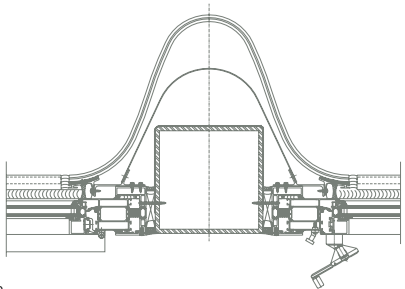
Proyectos

40 Bond, Apartment Building
New York
2006

Architect / Arquitecto
Herzog & de Meuron

Glazer / Fachadista
W&W Glass, LLC

Product / Producto
Cridecor®
Curved annealed
Curvado recocado
5 Green+5 mm Ser. #4



Projects

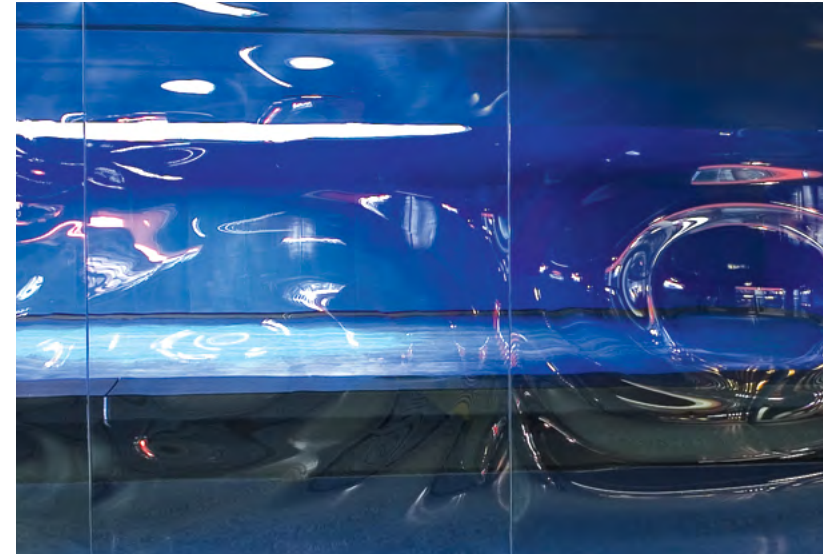
Proyectos

"Breathing" BBC Broadcasting House
London
2006

Architect / Arquitecto
Jaume Plensa

Glazer / Fachadista
Tuchsmid

Product / Producto
Crisunid®
Curved annealed
Curvado recocido
10+10 mm Extraclear DE Letters

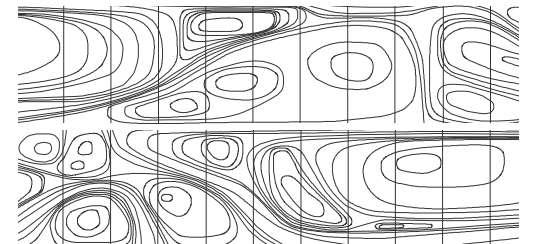


Memorial 11M
Madrid
2006

Architect / Arquitecto
FAM Arquitectura

Fachadista / Glazer
Cristaleria Vitral

Product / Producto
Crisunid®
Annealed compound curve glass
Curvado recocido geometría
compleja
8+8 mm Extraclear



Projects

Proyectos

One Wood St.
London
2007

Architect / Arquitecto
Fletcher Priest Ltd, London + Köln

Glazer / Fachadista
Josef Gartner GmbH

Product / Producto
Crislan® Low-E
5+6 SC #4 (12A) 6+5 mm



Gucci
Nagoya
2007

Architect / Arquitecto
**James Carpenter Design
Associates Inc.**

Glazer / Fachadista
Obayashi/Mitsui

Product / Producto
Crisunid®
10 RG+12t C-PVB Extraclear



Projects

Proyectos

Tróia Design Hotel
Portugal
2008

Architect / Arquitecto
Promontorio Arquitectos

Glazer / Fachadista
Facal

Product / Producto
Critemp®
6T SC #1+6T mm E #4

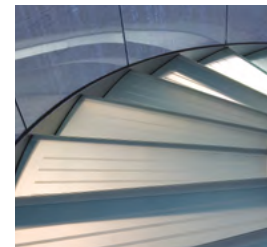


Bodegas Protos
Peñafiel
2008

Architect / Arquitecto
Rogers Stirk Harbour + Partners
Alonso, Balaguer y Arq. Asociados

Glazer / Fachadista
Vetrolux

Product / Producto
Crisand-VS
8T+8T+8T
Critemp®
8T+8T



Projects

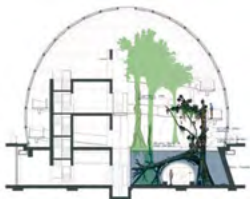
Proyectos

California Academy of Sciences
San Francisco (CA)
2008

Architect / Arquitecto
Renzo Piano Building Workshop

Glazer / Fachadista
Josef Gartner GmbH

Product / Producto
Crisunid®
Curvado recocido esférico
10+10 mm Extraclear



Projects

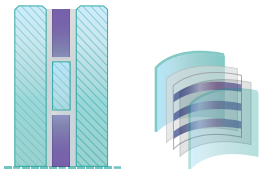
Proyectos

60 Threadneedle St.
London
2008

Architect / Arquitecto
Eric Parry Architects

Glazer / Fachadista
Josef Gartner GmbH

Product / Producto
Crisunid® Dichroico
Curved annealed
Curvado recocido
8+6Dichroic+6 mm Extraclear



Projects

Proyectos

KAUST
Jeddah
2009

Architect / Arquitecto
HOK

Glazer / Fachadista
Giulliani

Product / Producto
Crimar®
5M + 55.2 Extraclear



Projects

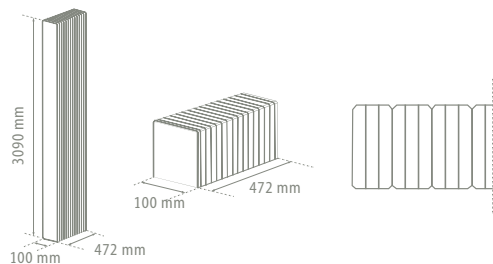
Proyectos

ROCA Barcelona Gallery
Barcelona
2009

Architect / Arquitecto
OAB Arquitectura,
Carlos Ferrater,
Borja Ferrater,
Lucia Ferrater

Glazer / Fachadista
Talleres Inox

Product / Producto
Crisunid®
15mm Extraclear x 30



Projects

Proyectos

EPFL, Rolex Learning Centre
Lausanne
2010

Architect / Arquitecto
Kazuyo Sejima + Ryue Nishizawa
S A N A A

Glazer / Fachadista
Roschmann Konstruktion
an Stahl und Glas GmbH

Product / Producto
Crislan Low-E
6T+6T LE#4 (14 Arg) 10T mm



Projects

Proyectos

EPFL, Rolex Learning Centre
Lausanne
2010

Architect / Arquitecto
Kazuyo Sejima + Ryue Nishizawa
S A N A A

Glazer / Fachadista
Roschmann Konstruktion
an Stahl und Glas GmbH

Product / Producto
Crislan Low-E
6T+6T LE#4 (14 Arg) 10T mm



Projects

Proyectos

Puente Champalimaud
Lisboa
2010

Architect / Arquitecto
Charles Correa / Glintt

Glazer / Fachadista
Bellpart S.A.U.

Product / Producto
Critemp®
8T SC#2 +8T Extraclear SG2,28



Projects

Proyectos

Centro Cultural Óscar Niemeyer
Aviés (Asturias)
2010

Architect / Arquitecto
Óscar Niemeyer

Glazer / Fachadista
Cristalería Laciana, S.L.

Product / Producto
Crisunid® Curvado
10T+10T mm



Ópera Garnier
Paris
2011

Architect / Arquitecto
Odile Decq

Glazer / Fachadista
Simetal

Product / Producto
Crisunid®
10+10 mm extraclear
Curved Annealed
Curvado recocido

Projects

Proyectos

Myriad Botanical Gardens
Oklahoma city, Oklahoma
2011

Architect / Arquitecto
Gensler - Washington DC

Glazer / Fachadista
LBI- Lippert Bros., Inc.

Product / Producto
Crislan Low-E
8T+8T LE#4 (12A) 8T mm



Projects

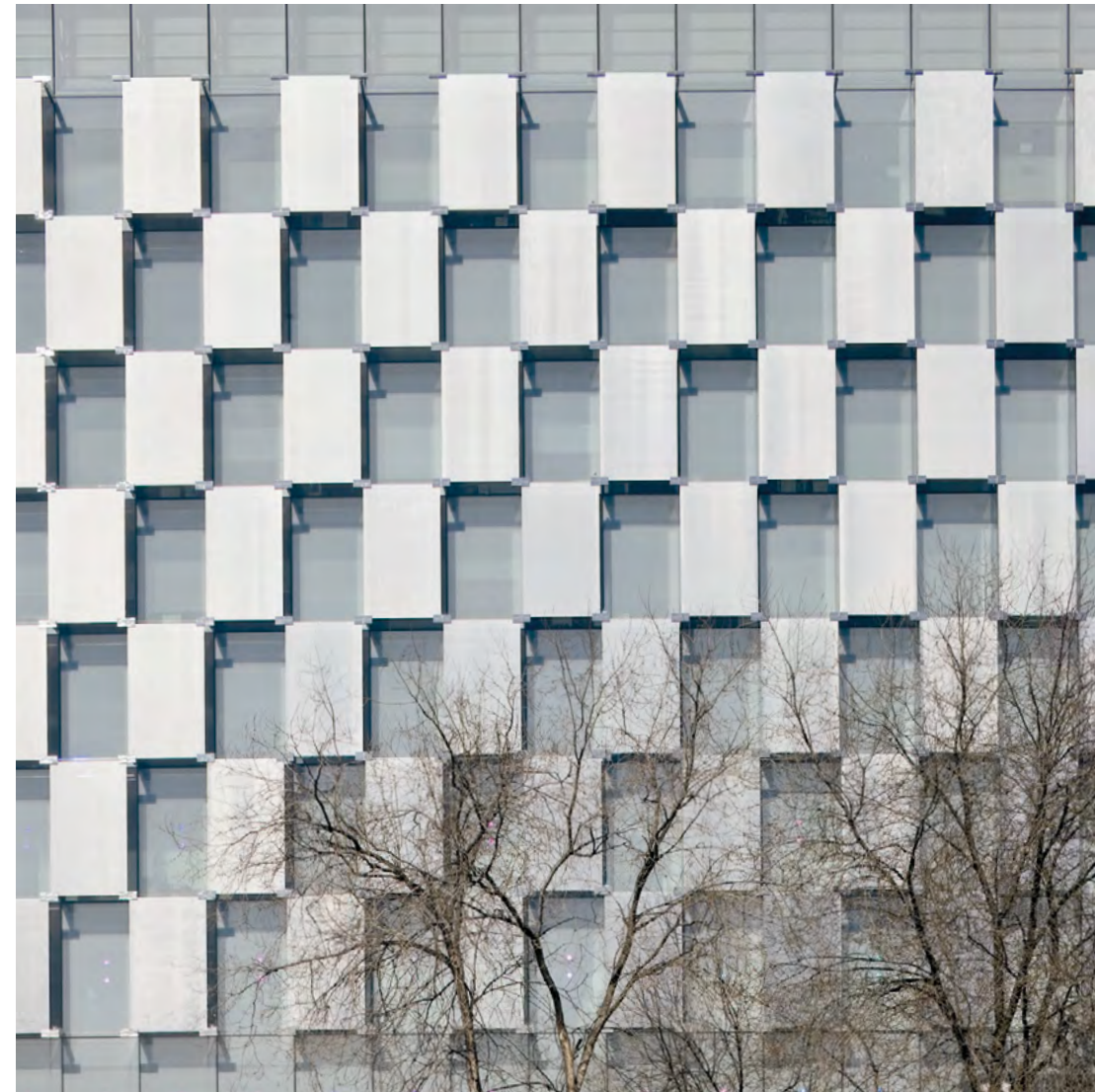
Proyectos

Castellana 79
Madrid
2011

Architect / Arquitecto
Rafael de La-Hoz Arquitectos

Glazer / Fachadista
Grupo Caamaño

Product / Producto
Cridecor Metalscreen®
SG interlayer
Laminación con SG
8T + 8T mm extraclear



Projects

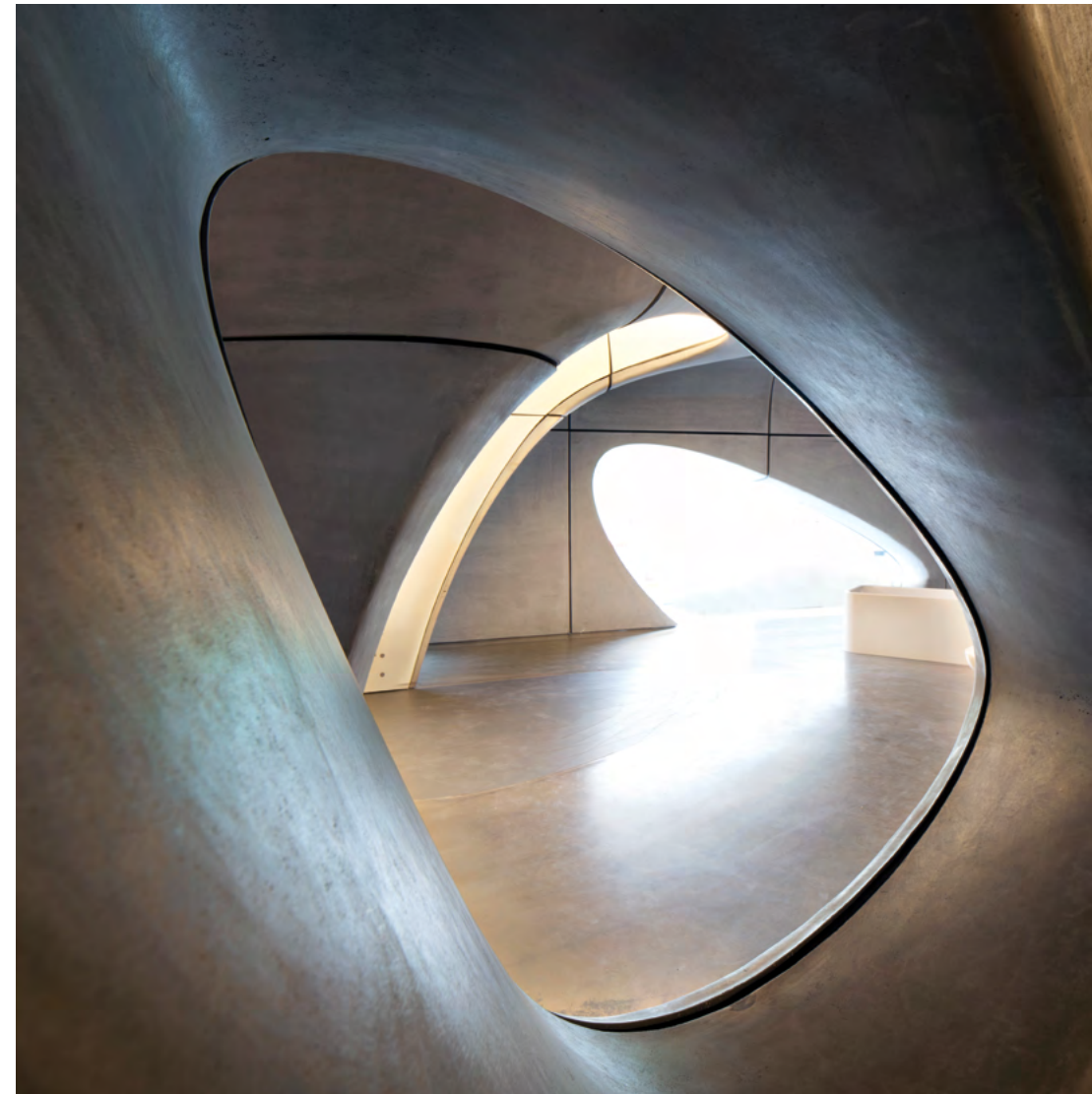
Proyectos

Roca London Gallery
Londres
2011

Architect / Arquitecto
Zaha Hadid Architects

Glazer / Fachadista
Sherlock Interiors / Empty

Product / Producto
Crislan Low-E
10 SC#2 (16 Arg) 8+8mm LE#3
Crisunid®
10+10mm Extraclear



Projects

Proyectos

Hospital Rey Juan Carlos
Móstoles (Madrid)
2012

Architect / Arquitecto
Rafael de La-Hoz Arquitectos

Glazer / Fachadista
Permasteelisa España S.A.U

Product / Producto
Cridecor®
12 mm extraclear
Annealed compound curved glass
Curvado recocado esférico



Projects

Proyectos

Hospital Rey Juan Carlos
Móstoles (Madrid)
2012

Architect / Arquitecto
Rafael de La-Hoz Arquitectos

Glazer / Fachadista
Permasteelisa España S.A.U

Product / Producto
Cridecor®
12 mm extraclear
Annealed compound curved glass
Curvado recocado esférico



Projects

Proyectos

Louvre-Lens

France

2012

Architect / Arquitecto

Kazuyo Sejima + Ryue Nishizawa /

SANAA

Glazer / Fachadista

Permasteelisa France

Product / Producto

Critemp® Curved Tempered Laminated



Projects

Proyectos

Emporia Shopping Mall
Malmö (Sweden)
2012

Architect / Arquitecto
Steen & Ström - Wingårdh
Arkitektkontor

Glazer / Fachadista
Grupo Folcrá Edificaciones S.A.

Product / Producto
Cridecor® Color Vanceva®
8+8mm Extraclear



Projects

Proyectos

Emporia Shopping Mall
Malmö (Sweden)
2012

Architect / Arquitecto
Steen & Ström - Wingårdh
Arkitektkontor

Glazer / Fachadista
Grupo Folcrá Edificaciones S.A.

Product / Producto
Cridecor® Color Vanceva®
8+8mm Extraclear



Projects

Proyectos

Casa V.
La Coruña
2012

Architect / Arquitecto
Dosis (de) Arquitectura

Product / Producto
Crislan®
8+8 -12 Aire - 8 + 8



Projects

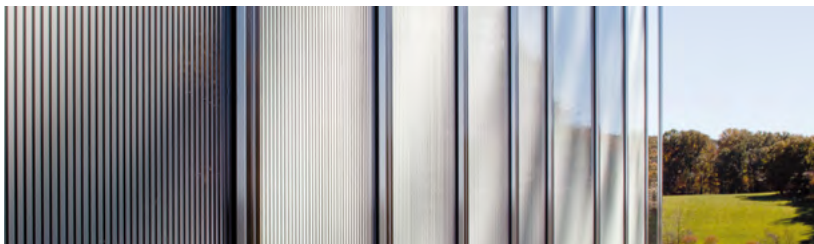
Proyectos

**Dutchess County
Residence - Main House**
Dutchess County - New York
2012

Architect / Arquitecto
Allied Works Architecture

Glazer / Fachadista
Neversink Glass Corp.

Product / Producto
Cridecor® - Sandblasted pattern
10+10 E#1 (12A) 6T Ser.# 6



Oficinas Baraka
Murcia
2013

Architect / Arquitecto
Clavel Arquitectos

Product / Producto
CRITEMP® Curvado Laminado
66.4 (StopSol Supersilver
Neutro 6 mm # 2)

Projects

Proyectos

Crow Mahogany Casino
Melbourne, Australia
2013

Architect / Arquitecto
Bates Smart Architects

Glazer / Fachadista
Minesco Pty Ltd.

Product / Producto
Cridecor® Texture



Projects

Proyectos

Puerto Cartagena
(Autoridad Portuaria Cartagena)
2013

Architect / Arquitecto
Martin Lejarraga

Glazer / Fachadista
Cristalería Ibañez - Murcia

Product / Producto
Cridecor SentryGlas Expressions®
6T+6T C-PVB



Projects

Proyectos

Puerto Cartagena
(Autoridad Portuaria Cartagena)
2013

Architect / Arquitecto
Martin Lejarraga

Glazer / Fachadista
Cristalería Ibañez - Murcia

Product / Producto
Cridecor SentryGlas Expressions®
6T+6T C-PVB



Projects

Proyectos

**The Neuroscience
& Psychology Bldgs**
Princeton Univ. (NJ)
2013

Architect / Arquitecto
Rafael Moneo

Glazer / Fachadista
Permasteelisa North America

Product / Producto
Cri-Fusing®



Projects

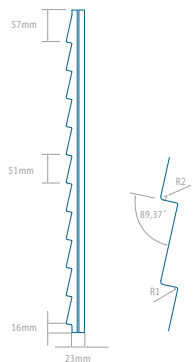
Proyectos

**The Neuroscience
& Psychology Bldgs**
Princeton Univ. (NJ)
2013

Architect / Arquitecto
Rafael Moneo

Glazer / Fachadista
Permasteelisa North America

Product / Producto
Cri-Fusing®



Projects

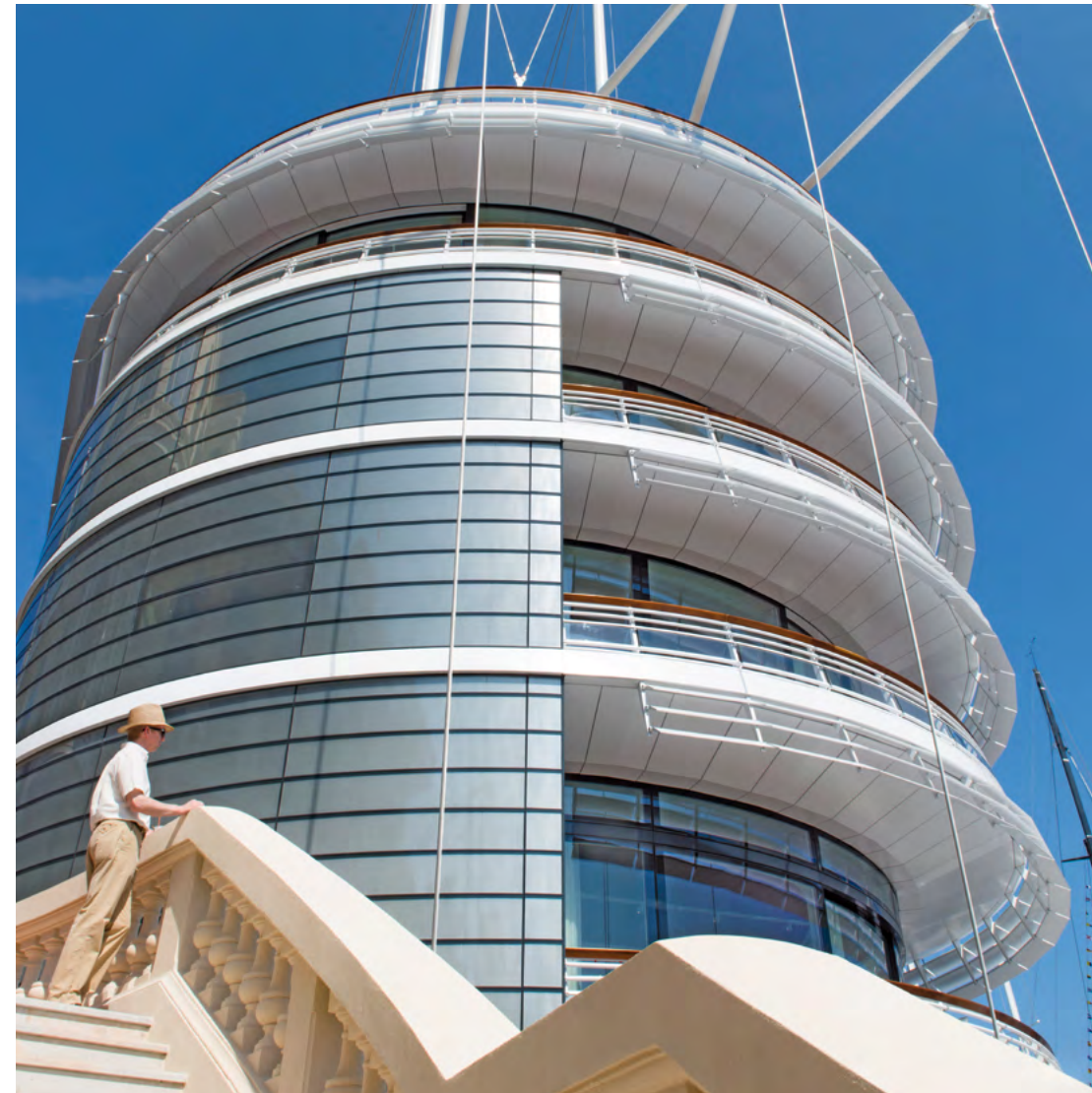
Proyectos

Yacht Club
Monaco
2014

Architect / Arquitecto
Foster + Partners

Glazer / Fachadista
Metallbau Früh GmbH

Product / Producto
Crimetal®
8+8mm Extraclear- Ser. #4



Projects

Proyectos

**FKI-Federation
of Korean Industries**
Seoul (Korea)
2014

Architect / Arquitecto
Adrian Smith+Gordon Gill

Glazer / Fachadista
**Grupo Folcrá Edificaciones S.A.
/ Iljin Unisco Co.**

Product / Producto
Crislan® California



Projects

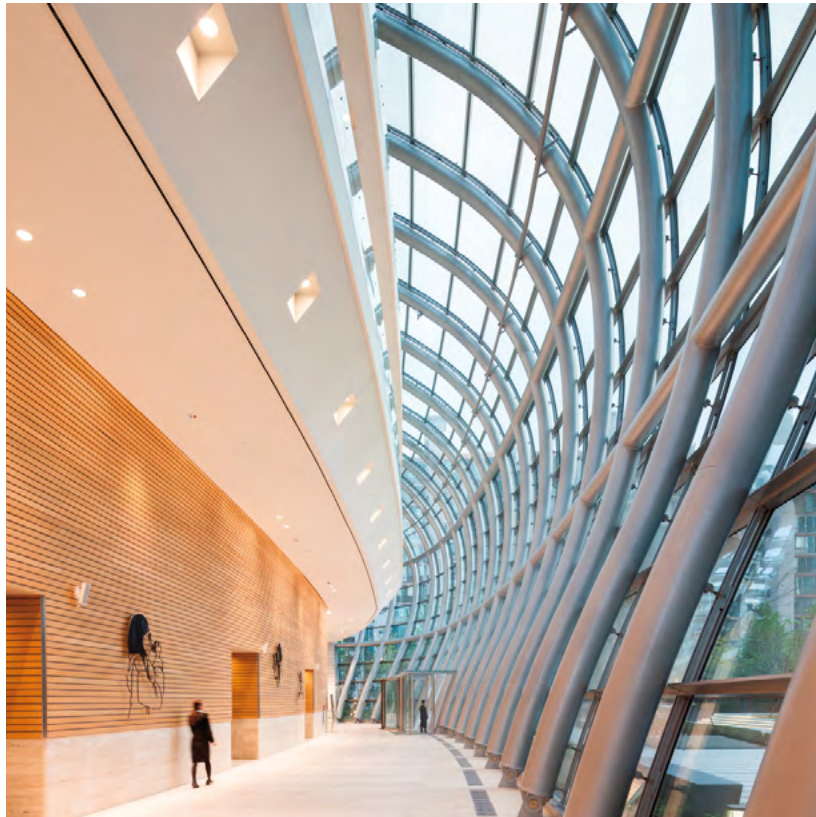
Proyectos

**FKI-Federation
of Korean Industries**
Seoul (Korea)
2014

Architect / Arquitecto
Adrian Smith+Gordon Gill

Glazer / Fachadista
**Grupo Folcrá Edificaciones S.A.
/ Iljin Unisco Co.**

Product / Producto
Crislan® California



Projects

Proyectos

Bombay Sapphire Distillery
Laverstoke Mill, Hampshire, UK
2014

Architect / Arquitecto
Heatherwick Studio

Glazer / Fachadista
Bellpart S.A.U.

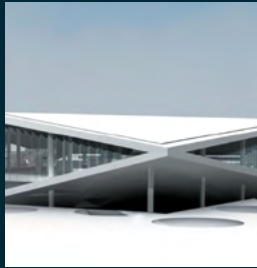
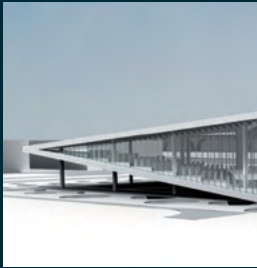
Product / Producto
Critemp®
6T+6T Extraclear SG 1,52 (non-UV)
Cricursa Shield



Ongoing Projects

Proyectos en curso

Qatar National Library,
Doha
Architect / Arquitecto:
OMA



Canaletto – 257 City Road,
London, UK
Architect / Arquitecto:
UN Studio



KAFD (King Abdullah Financial
District) P5.05, Riyadh, Saudi Arabia
Architect / Arquitecto:
FX Fowle Architects



Bighi Dome – Planetarium,
Malta

Taipei Performing Arts Center,
Taipei, Taiwan
Architect / Arquitecto:
OMA

Turnmill, 63 Clerkenwell
Road EC1, London, UK
Architect / Arquitecto:
Piercy&Co

7 Bryant Park,
New York, USA
Architect / Arquitecto:
Pei Cobb Freed & Partners



PANGU Retail,
Beijing, China
Architect / Arquitecto:
Zaha Hadid Architects

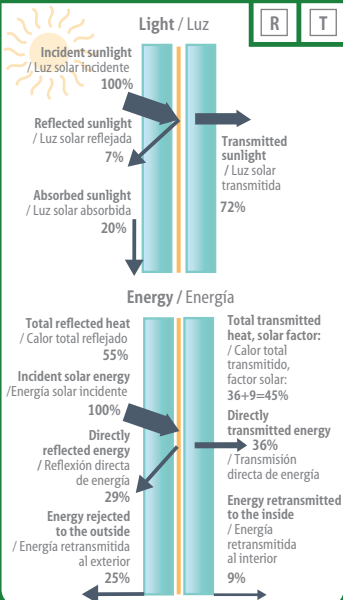
Crisnid® California

Solar control
Control solar

D 394" x 79"
10.000 x 2.000 mm

L A

R T

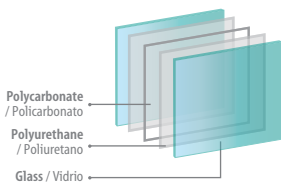


Crimaza®

Reinforced glass
Vidrio blindado de alta seguridad

D 118" x 49"
3.000 x 1.250 mm

L A R

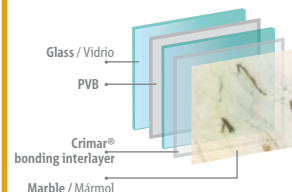


Crimar®

Laminated glass with translucent marble
Vidrio laminado con mármol translúcido

D 118" x 39"
3.000 x 1.000 mm

R L A

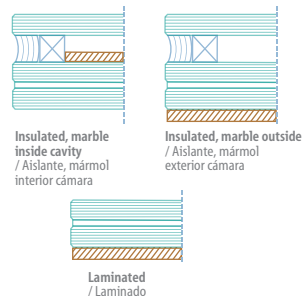
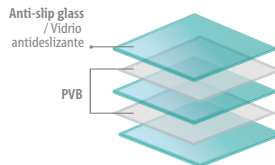


Crisand

Anti-slip glass
Vidrio antideslizante

D 126" x 71"
3.210 x 1.800 mm

R T L



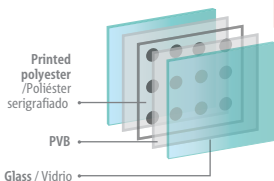
Cridecor® Chromascreen

One way vision
Visión en un solo sentido

D 74 13/16" x 165 3/8"
1.900 x 4.200 mm

L A T

R

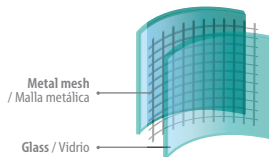


Crimetal®

Laminated glass with metal mesh
Vidrio laminado con malla metálica

D 228" x 87"
5.800 x 2.200 mm

T L A



Cricursa Shield

Hydrophobic treatment of glass surface
Vidrio con tratamiento hidrofóbico

