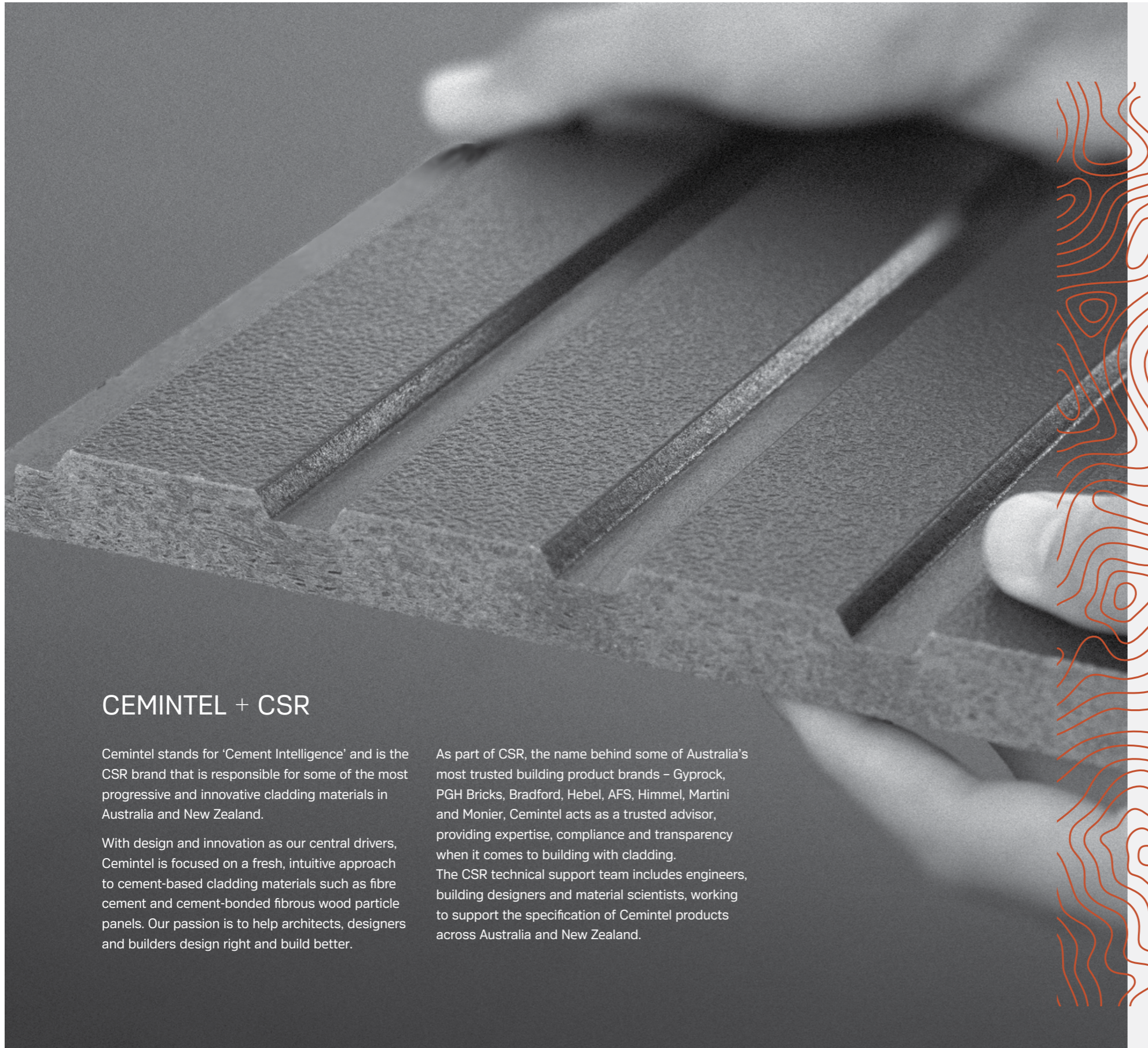


CEMINTEL®

TERRITORY





CEMINTEL + CSR

Cemintel stands for 'Cement Intelligence' and is the CSR brand that is responsible for some of the most progressive and innovative cladding materials in Australia and New Zealand.

With design and innovation as our central drivers, Cemintel is focused on a fresh, intuitive approach to cement-based cladding materials such as fibre cement and cement-bonded fibrous wood particle panels. Our passion is to help architects, designers and builders design right and build better.

As part of CSR, the name behind some of Australia's most trusted building product brands – Gyprock, PGH Bricks, Bradford, Hebel, AFS, Himmel, Martini and Monier, Cemintel acts as a trusted advisor, providing expertise, compliance and transparency when it comes to building with cladding. The CSR technical support team includes engineers, building designers and material scientists, working to support the specification of Cemintel products across Australia and New Zealand.

TERRITORY

Cemintel Territory is a prefinished cladding system that simulates materials such as stone, timber, concrete, metal, and smooth render.

Territory cladding is a 16mm thick cement bonded fibrous wood particle panel that is pressed with surface textures and finished with a high quality paint and UV coating. Panels are 3030mm in length, with an effective cover width of 455mm, and connect seamlessly into each other via a tongue and groove profile.

Territory cladding panels are supported by a proprietary concealed fixing system that enables the panels to be installed on masonry, timber and steel frames, either horizontally or vertically, externally or internally, on both residential and commercial buildings.

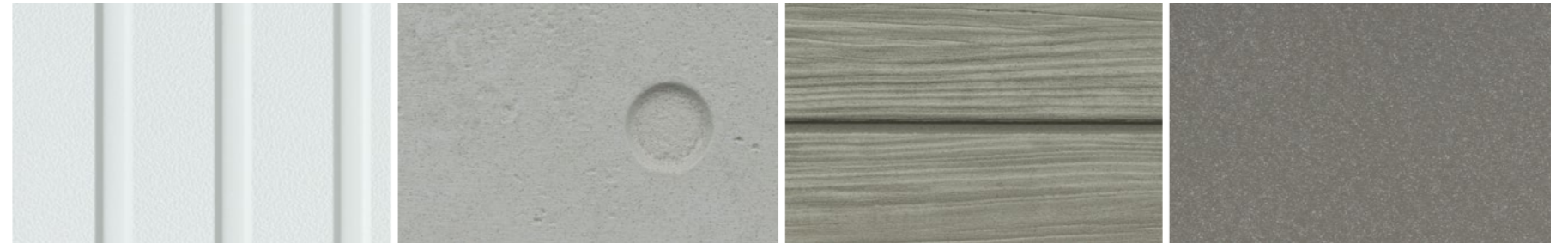
WHY TERRITORY?

- CodeMark Certified CM30048
- Tested to AS5113 achieving a reaction-to-fire performance 'EW' (External Wall) classification
- Panels are able to be used whenever a non-combustible material is required by NCC DTS Clause C1.9 (e)(iv)
- Resistant to bushfire attack level 40 (BAL 40) for external walls tested accordance with AS1530.8.1
- Group Number 1 for internal lining in accordance with AS5637.1/ISO9705
- Prefinished and available in a variety of colours and textures
- Minimal ongoing maintenance and long lasting protection against UV damage and colour fade
- Proprietary concealed fixing system provides a ventilated cavity for effective moisture management
- Compatible with other Cemintel prefinished cladding systems including Surround and Barestone (refer to pages 24 & 25)
- Integrates easily into mixed façade systems that use concrete, brick, or AAC such as Hebel
- Complete cladding system including preformed corners and colour-match sealants



THIS IS CEMINTEL TERRITORY

A natural cladding range that derives from the values of simplicity, nature and quality. Territory prefinished cladding simulates materials like stone, timber, concrete, metal and smooth render, in a sophisticated way that enhances building façades and interior spaces.



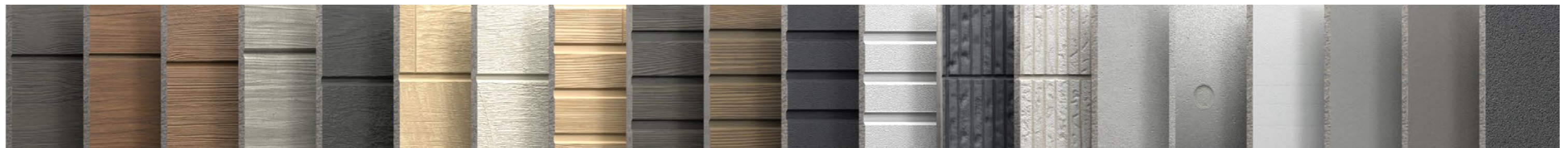
WOODLANDS

RIDGE

CANYON

QUARRY

SAVANNA



SMOKED
133976

CEDAR
472377

TEAK
133975

GREY GUM
472376

EBONY
163108

BIRCH
472366

LIMED
163175

OAKY SLATS
472362

KWILLA SLATS
472361

JARRAH SLATS
472360

BLACK
472373

WHITE
472374

CARNARVON
472365

KINGS
472363

CONCRETE
134702

URBAN GREY
133977

CLOUD
133935

MIST
133937

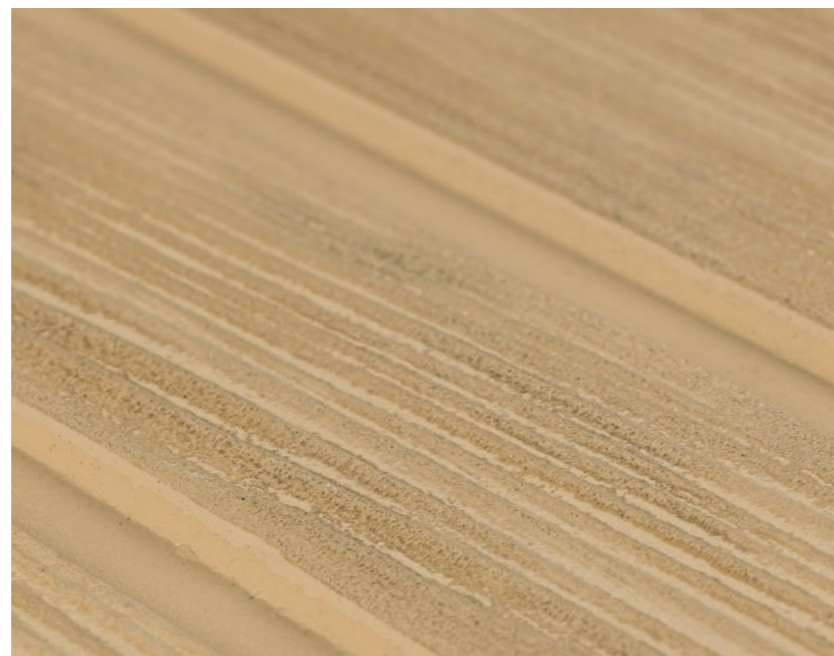
SHADE
133938

SHADOW
477863



Embossed joint line provides a beautiful shadow that changes throughout the day

Timber grain is beautifully pressed on the surface of every Woodlands panel



The dark tone and detailed texture of Woodlands Ebony



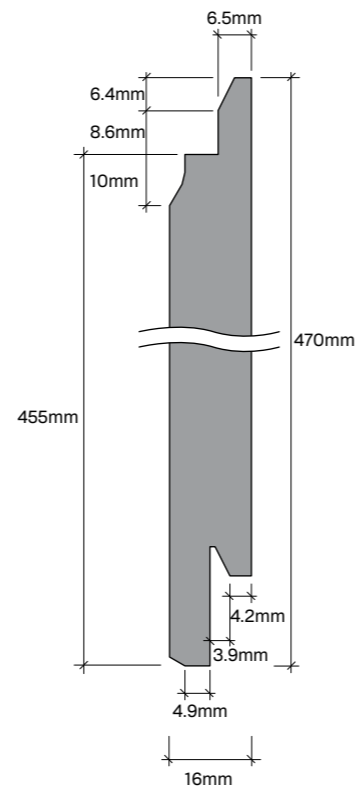
Light plays on the prefinished, metallic surface of this delightful linear patterned profile to create a strong, visual presence

PANEL INFORMATION

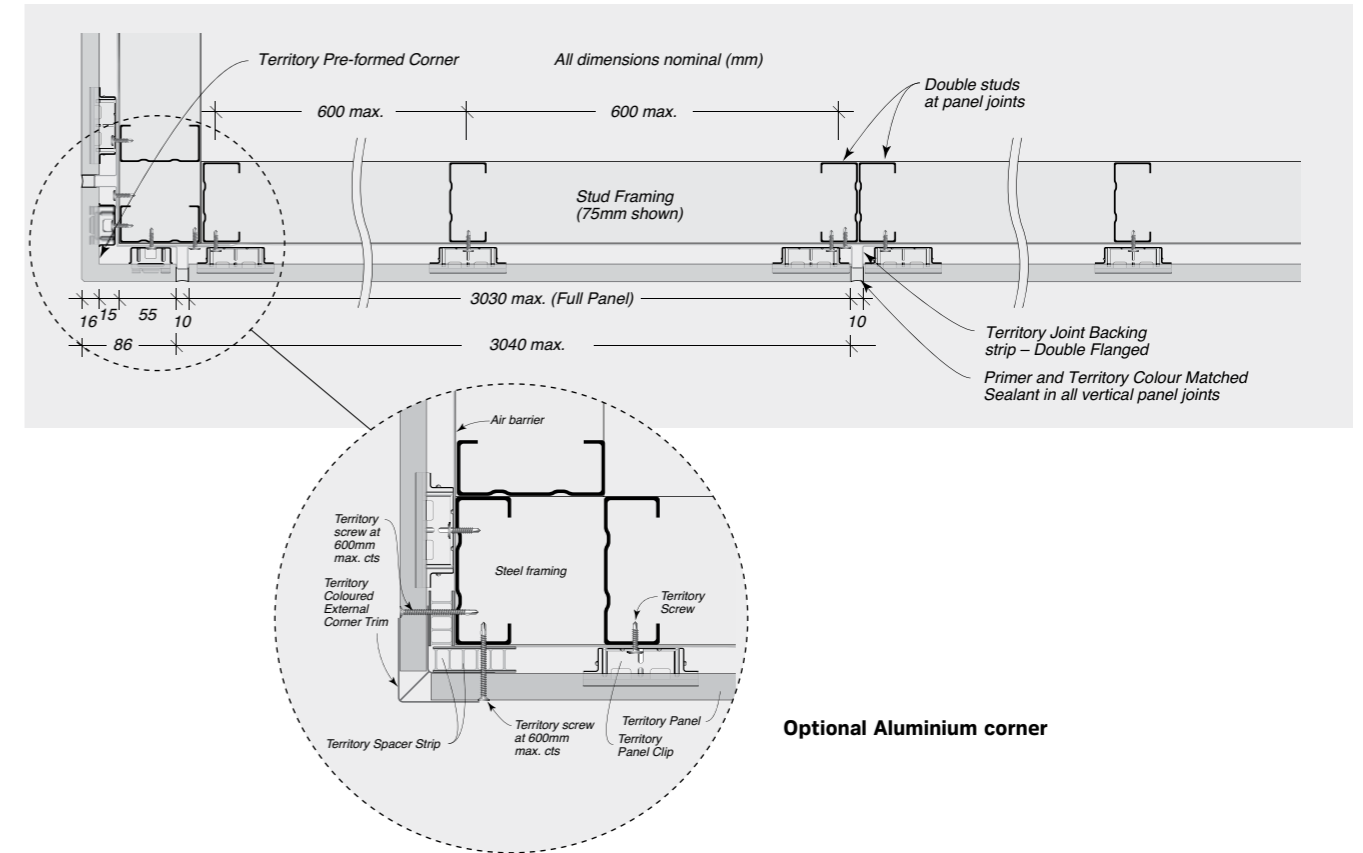
| Property | Specification | Tolerance |
|---------------------------|--|-------------|
| Panel Width | 470mm (overall width) 455mm (effective coverage) | + / - 1mm |
| Panel Length | 3030mm | + / - 1mm |
| Panel Thickness | 16mm | + / - 1.2mm |
| Panel Weight (EMC) | 24.6kg to 30kg per panel. Weight varies depending on finish. (Note: 2 panels per pack) | |

Cemintel Territory cladding is a 16mm thick cement-bonded fibrous wood particle panel that's pressed with surface textures and finished with a high-quality paint and UV coating. The panels are 3030mm in length with an effective cover width of 455mm and connect seamlessly into each other via a tongue and groove profile.

The Territory cladding panels are supported by a proprietary concealed fixing system that enables the panels to be installed either horizontally or vertically, externally or internally, on both residential and commercial buildings.

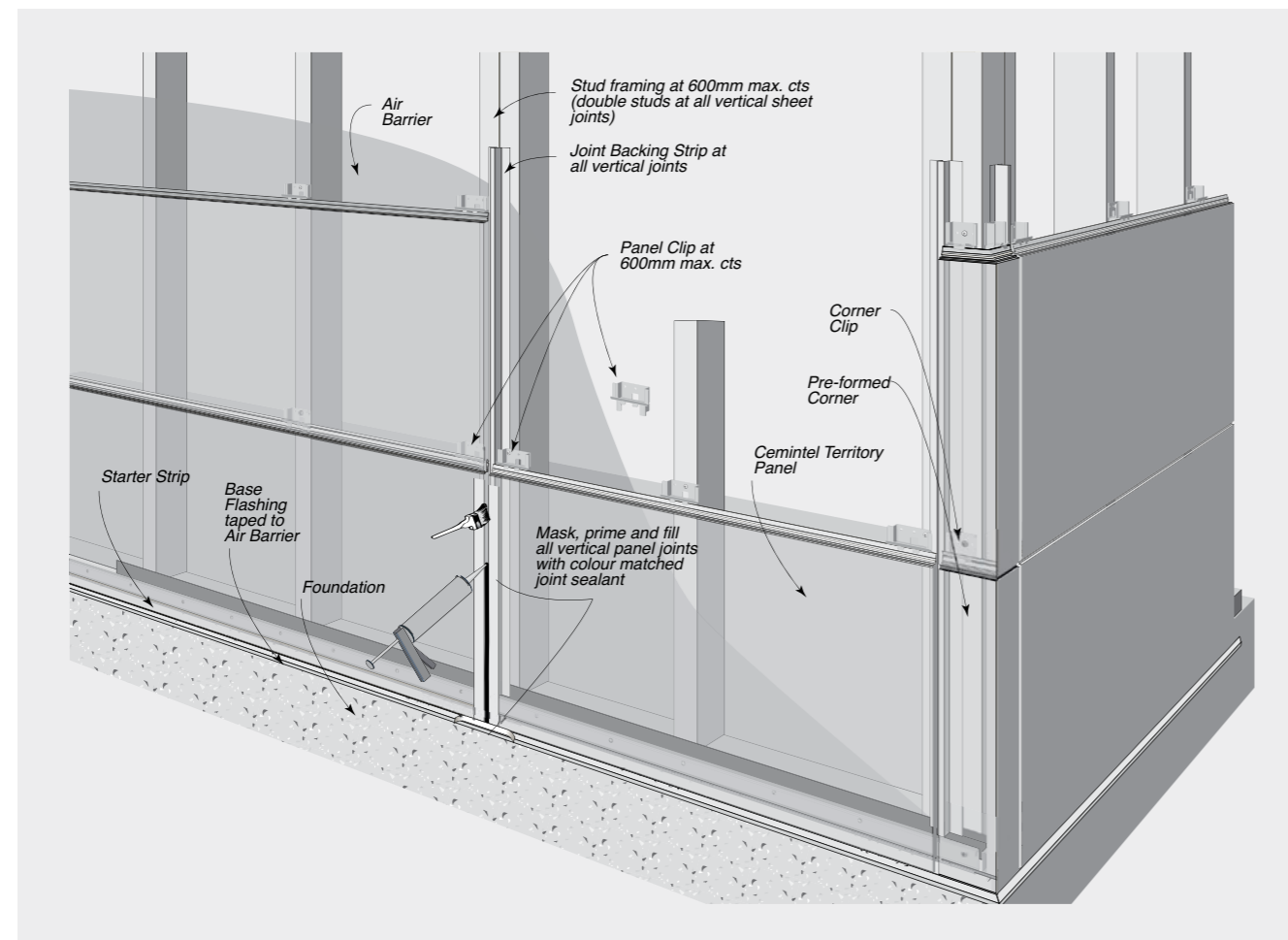


Typical Framing Set-Out with 75mm Steel Framing and Territory Pre-formed Corners - Plan View



Optional Aluminium corner

Cemintel Territory panels are installed with a unique clip system – providing a ventilated cavity.



Cemintel Territory Design and Installation Guides

Our Design and Installation Guides are available to download at: cemintel.com.au/technical/
Alternatively, scan the QR codes below to download.



Territory External Horizontal Design & Installation Guide



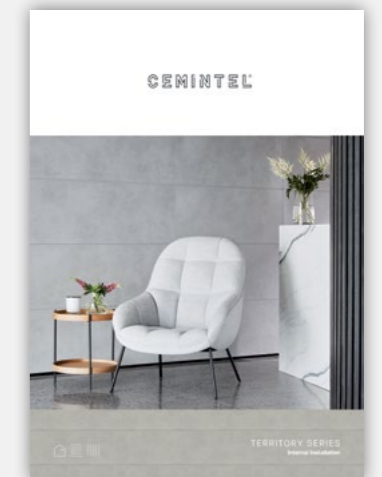
Scan me to download

Territory External Vertical Design & Installation Guide





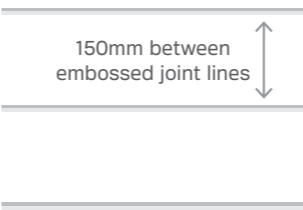

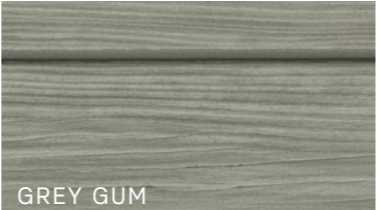
Scan me to download

Territory Internal Design & Installation Guide



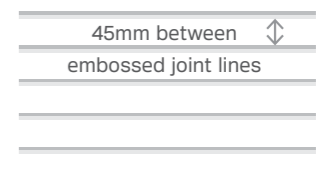
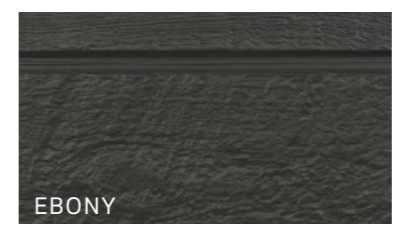
Scan me to download



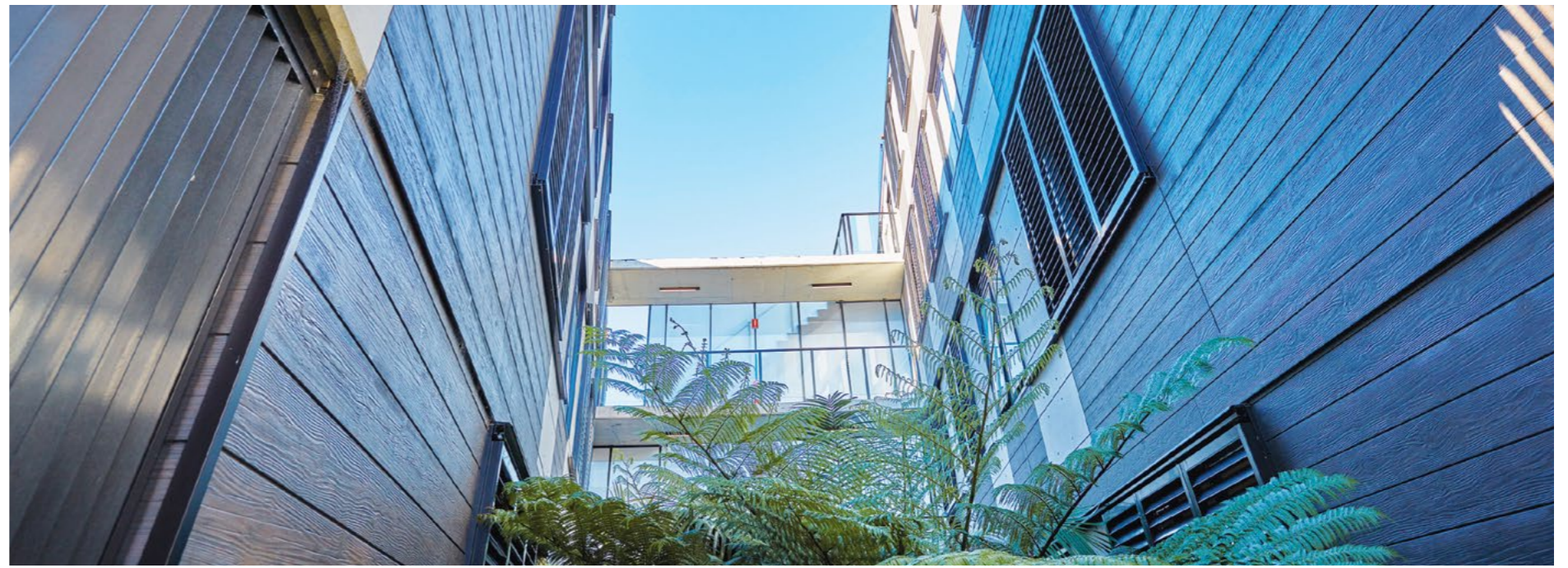
| | | |
|--|---|---|
|  SMOKED |  CEDAR |  <p>150mm between embossed joint lines</p> |
|  TEAK |  GREY GUM | |

WOODLANDS

Prefinished panels that mimic timber to create the warmth desired from the most natural of building materials - without the maintenance.



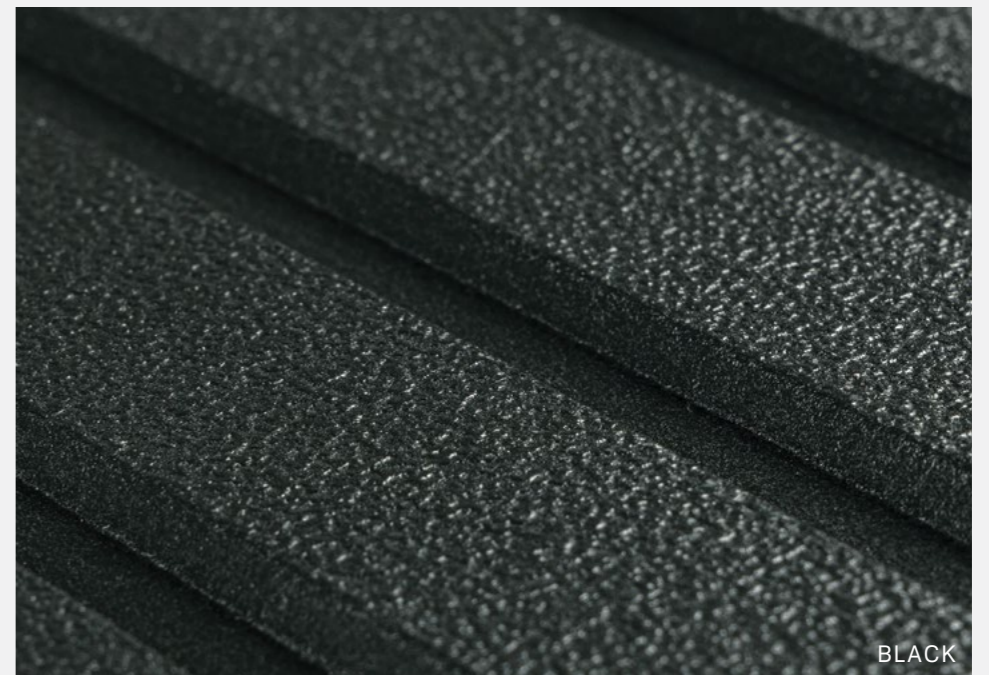




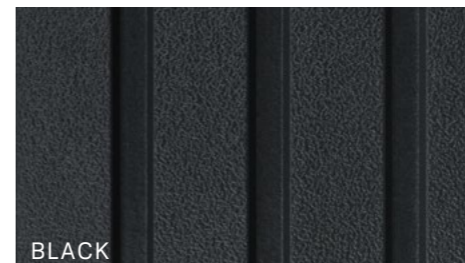


RIDGE

Light plays on the prefinished, metallic surface of this delightful linear patterned profile to create a strong, visual presence.



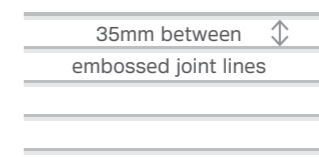
BLACK



BLACK



WHITE



CANYON

Exposed to the elements, the softened pattern of this prefinished panel will carve a place in any interior space, or local streetscape.

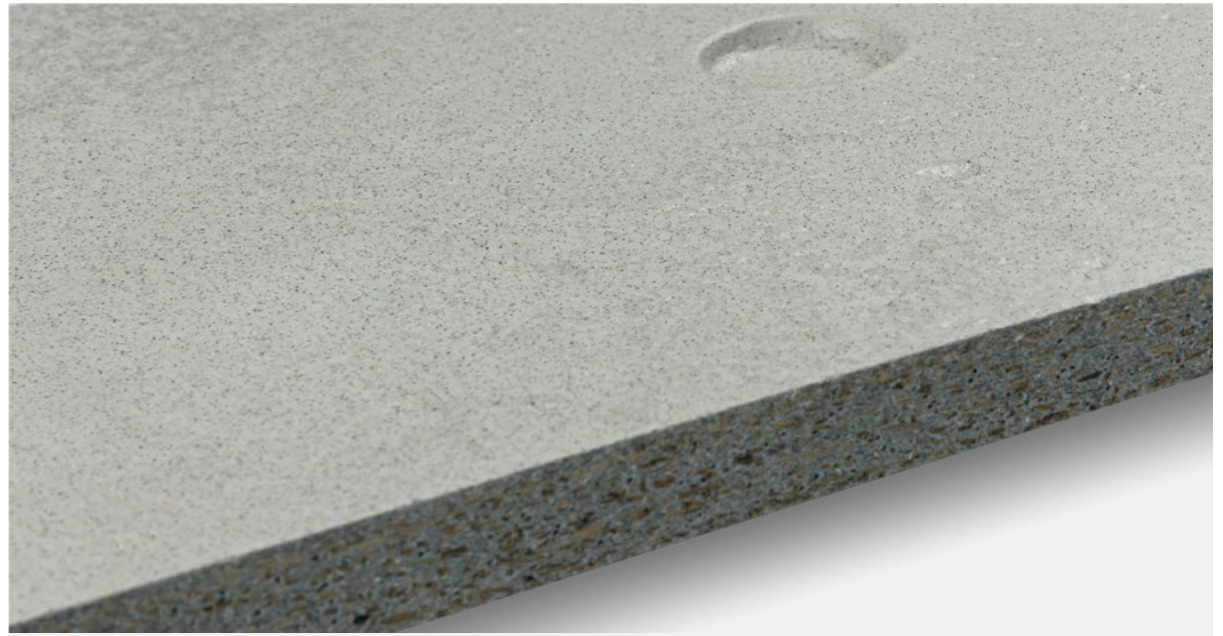


CARNARVON



KINGS



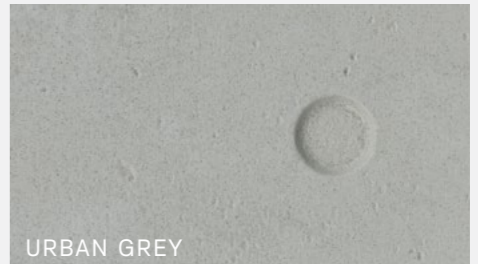


QUARRY

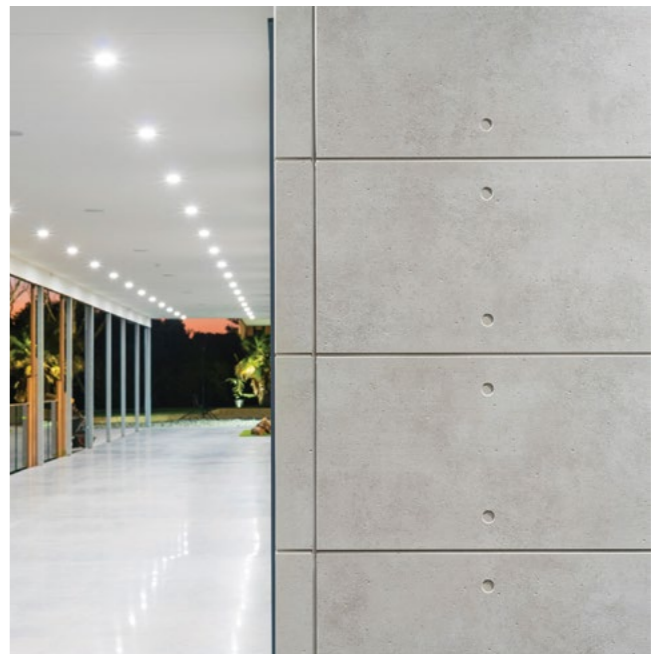
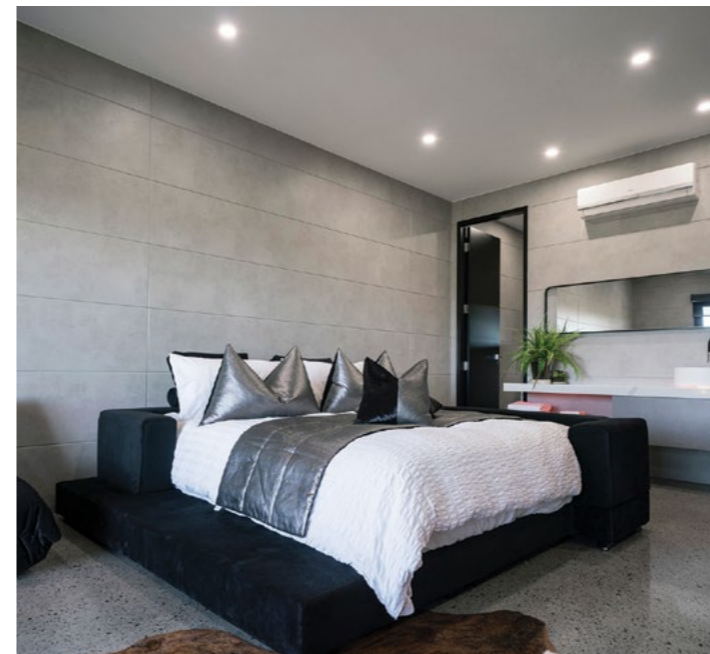
A prefinished panel that evokes the raw, unpretentious, malleable and functional properties of concrete, one of the most utilised products in the world.



CONCRETE



URBAN GREY







SAVANNA

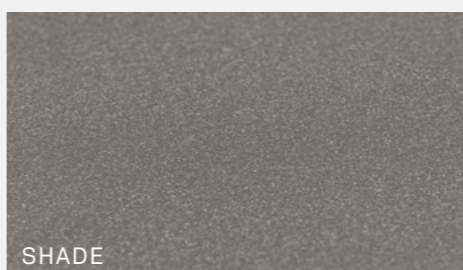
Prefinished panels with hardy aesthetic tones that evoke elements of the beautiful Australian landscape. Cloud, Mist and Shade come in a matt, smooth finish, while Shadow has the light texture of a rendered surface.



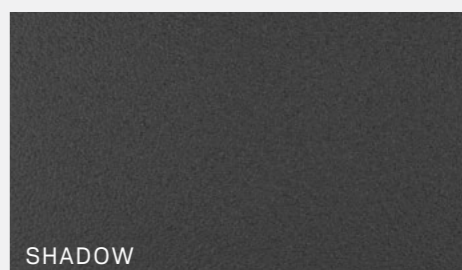
CLOUD



MIST



SHADE



SHADOW



PREFINISHED CLADDING SYSTEMS

In addition to the Territory range, Cemintel offer a selection of prefinished cladding systems that allow architects, designers and builders to create truly outstanding building façades and interior spaces.

With so much choice the design possibilities are endless. Whether it's a complete façade, an internal or external feature wall, or a ceiling or soffit application, Cemintel prefinished cladding systems add distinctive design features.

Cemintel's prefinished cladding systems (Territory, Surround, Barestone) can be mixed and matched

with each other and easily integrated into mixed facade systems that use concrete, brick, or AAC such as Hebel.

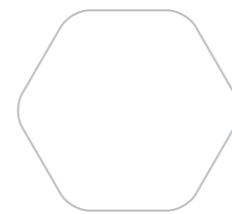
CSR is in a unique position to offer a total facade system solution across its brands with cladding + framing + rigid air barrier from Cemintel, moisture management + thermal and acoustic insulation from Bradford, and framing + internal linings from Gyprock.

For project-specific technical support contact the **CSR DesignLINK** team on **1800 621 117** or email designlink@csr.com.au



CEMINTEL SURROUND

Allowing you to mix and match colours with confidence, Surround has a core palette of 5 neutral colours and discrete patterns with a secondary palette of 16 colours designed to highlight and complement the core colour offering.



Learn more

NEUTRAL PALETTE



SECONDARY PALETTE#

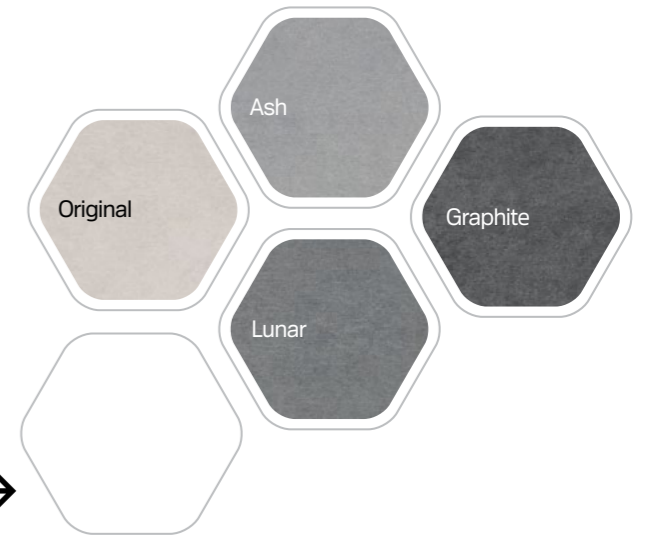


*Limited stock held otherwise minimum order quantities and lead times apply.



CEMINTEL BARESTONE

Barestone panels are manufactured in Australia and provide a natural, raw concrete appearance that blends seamlessly into its environment and easily adapts to modern, contemporary designs. Ash, Lunar and Graphite add colour depth, while maintaining the raw, natural appeal of the much loved Original.



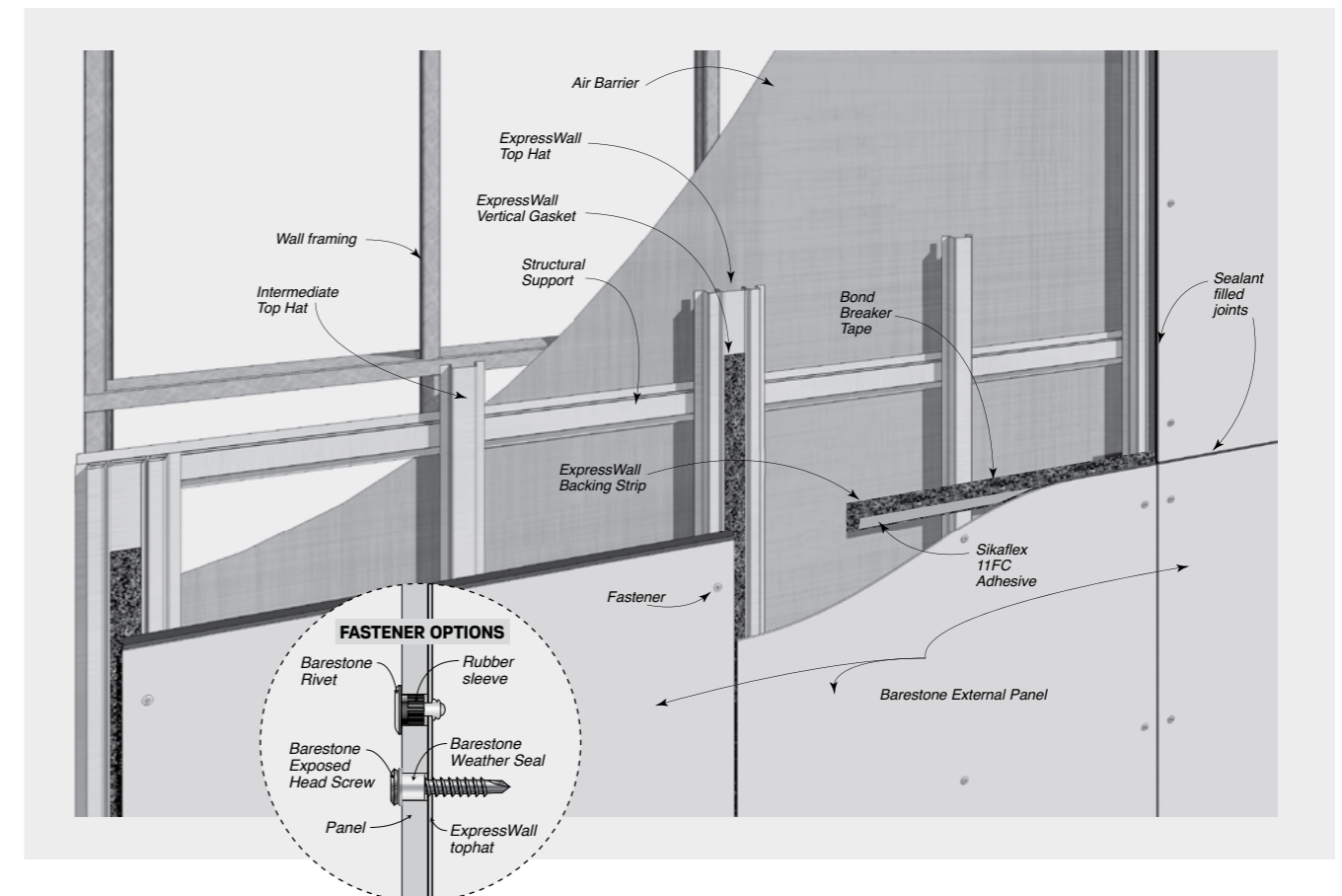
Learn more

CEMINTEL EXPRESSWALL SYSTEM

Cemintel Surround and Barestone prefinished cladding products can be installed horizontally or vertically onto steel or timber stud framing or masonry/concrete using the proven and versatile Commercial ExpressWall® top hat fixing system. Panels are installed as a pressure equalised

ventilated cavity system which is easy to install and delivers a high weather performance system. Learn more about this system in the Surround and Barestone Design and Installation Guides: cemintel.com.au/technical/

Pressure Equalised Ventilated Cavity System



CASE STUDIES



High level fascination, low level maintenance

Building Designer Reece Keil has created a low maintenance home with views of Surfers Paradise using Cemintel Territory for its unique visual qualities and minimal maintenance.



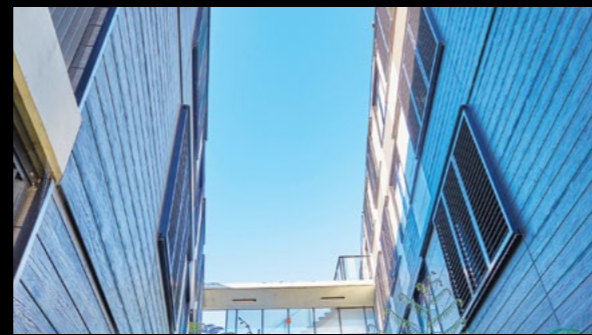
Unique street appeal in Brisbane's south

When building and design company, Into Building, wanted to create a unique look with strong street appeal for their five-house development on Brisbane's south-side, they came to Cemintel for the answer.



Award-winning townhouse

Built on a former quarry site, the Clyde Street project in Thirroul undertaken by Contractors United, represents a masterclass in transformation and modern urban design.



Allure Apartments Dee Why

Combining coastal living with contemporary design features, the Allure Apartments in Sydney's sunny northern beaches are an idyllic retreat from the busy city.



Quality and beauty at the forefront of design

Clients come to Hudson Ridge seeking a high level of detail, aesthetic, and longevity within their build, the use of Cemintel and Hebel materials ensure this is possible, every time.



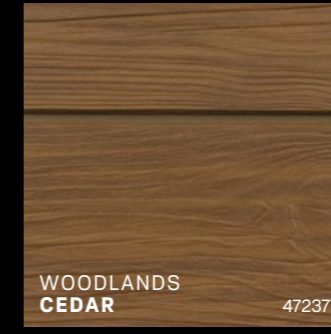
Holistic healthcare with Territory Savanna

For the growing town of Port Macquarie, the expansion of the local Base Hospital has not only brought world-class services, equipment and skills to the region, the \$17.5 million expanded mental health unit has also delivered a new approach to holistic care through thoughtful design, inside and out.

TERRITORY



WOODLANDS
SMOKED 133976



WOODLANDS
CEDAR 472377



WOODLANDS
TEAK 133975



WOODLANDS
GREY GUM 472376



WOODLANDS
EBONY 163108



WOODLANDS
BIRCH 472366



WOODLANDS
LIMED 163175



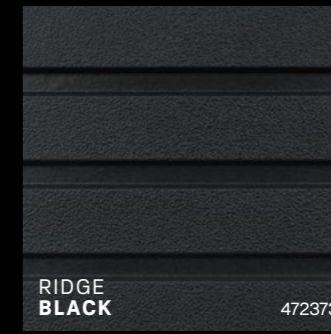
WOODLANDS
OAKY SLATS 472362



WOODLANDS
KWILLA SLATS 472361



WOODLANDS
JARRAH SLATS 472360



RIDGE
BLACK 472373



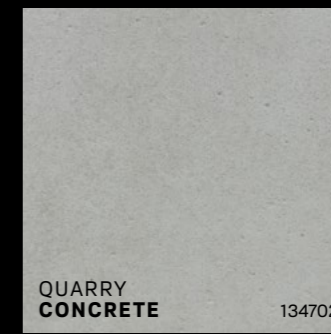
RIDGE
WHITE 472374



CANYON
CARNARVON 472365



CANYON
KINGS 472363



QUARRY
CONCRETE 134702



QUARRY
URBAN GREY 133977



SAVANNA
CLOUD 133935



SAVANNA
MIST 133937



SAVANNA
SHADE 133938



SAVANNA
SHADOW 477863



Get in touch

Let Cemintel help bring your next project to life.

For inspiration, tips, information, sample ordering, and to download design documentation and installation guides, visit cemintel.com.au

For project-specific technical support contact the **CSR DesignLINK team – 1800 621 117**

Backed by CSR...

Cemintel is part of CSR Limited, the name behind some of Australia and New Zealand's most trusted building industry brands, including Gyprock, PGH Bricks, Bradford, Hebel, AFS and Monier.



CELEBRATING
25 YEARS

In 2021 Cemintel celebrated the important milestone of 25 years in operation as Australia's preeminent fibre cement specialist.

Cemintel is a trading entity of CSR Building Products Limited (ACN 008 631 356).

Disclaimer: Information presented in this document is supplied in good faith and to the best of our knowledge, was accurate at the time of preparation. Products are subject to natural variation as part of the manufacturing process. Product images may vary from actual product in regard to colour and surface finish. The provision of this information should not be construed as a recommendation to use any of our products in violation of any patent rights or in breach of any statute or regulation. Users are advised to make their own determination as to the suitability of this information in relation to their particular purpose or specific circumstances. Since the information contained in this document may be applied under conditions beyond our control, no responsibility can be accepted by Cemintel, or its staff for any loss or damage caused by any person acting or refraining from action as a result of misuse of this information.

cemintel.com.au

1300 236 468

05/22

