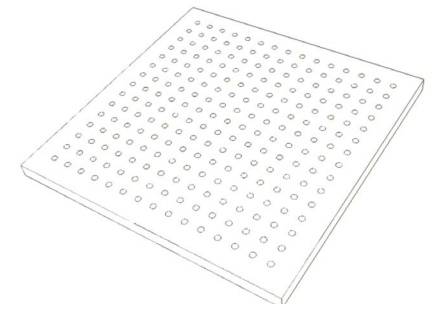


# ACOUSTIC DATA SHEETS

DecorLux

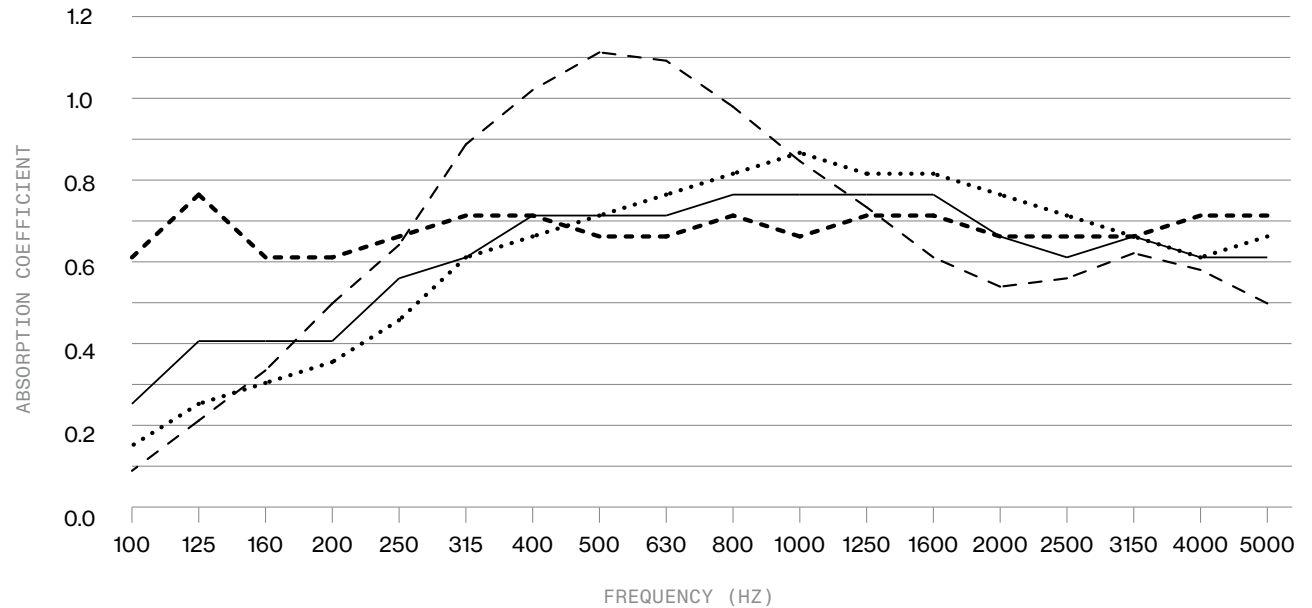
# DECORLUX—10.2%

DECORLUX 6MM FIBRE-CEMENT PANEL, 10.2% OPEN AREA WITH 50MM, 90MM OR 400MM CAVITY



Acoustic panels

OPEN AREA 10.2%	NRC 0.65—0.80
<b>PRODUCT OVERVIEW</b> Finishes available - DecorImage, Raw and Undercoated Fire Rating - Group 1, Non-combustible Green Certifications - GECA	
<b>TESTING OVERVIEW</b> NATA Certified   AS 1045-1988, measurement of sound absorption in a reverberation room Product tested with framing method as per installation guidelines. <a href="#">View Installation Guidelines here.</a> Substrate: Fibre Cement	
<b>STANDARD LENGTHS AND WIDTH</b> 2400/3000x1200mm	



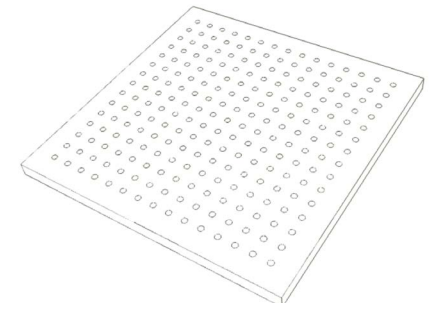
ITEM / DESCRIPTION	100	125	160	200	250	315	400	500	630	800	1K	1.25K	1.6K	2K	2.5K	3.15K	4K	5K
DecorLux <sup>1</sup>	0.15	0.25	0.3	0.35	0.45	0.6	0.65	0.7	0.75	0.8	0.85	0.8	0.8	0.75	0.7	0.65	0.6	0.65
DecorLux <sup>2</sup>	0.09	0.21	0.33	0.49	0.63	0.87	1	1.09	1.07	0.96	0.83	0.72	0.6	0.53	0.55	0.61	0.57	0.49
DecorLux <sup>3</sup>	0.25	0.4	0.4	0.4	0.55	0.6	0.7	0.7	0.7	0.75	0.75	0.75	0.75	0.65	0.6	0.65	0.6	0.6
DecorLux <sup>4</sup>	0.6	0.75	0.6	0.6	0.65	0.7	0.7	0.65	0.65	0.7	0.65	0.7	0.7	0.65	0.65	0.65	0.7	0.7

DecorLux<sup>1</sup> – AP125S/45 fibre-cement panel 6mm thick, open area 10.2% with Decorsorb, air gap and then A8210 insulation – 50mm cavity — NRC 0.70 —  $\alpha_w$  0.70 — SAC C  
 DecorLux<sup>2</sup> – Fibre-cement panel 6mm thick, open area 10% with Decorsorb, then Polymax insulation 75mm thick compressed into cavity – 50mm cavity — NRC 0.80 —  $\alpha_w$  0.65 — SAC C  
 DecorLux<sup>3</sup> – AP125S/45 fibre-cement panel 6mm thick, open area 10.2% with Decorsorb – 90mm cavity — NRC 0.65 —  $\alpha_w$  0.70 — SAC C  
 DecorLux<sup>4</sup> – AP125S/45 fibre-cement panel 6mm thick, open area 10.2% with Decorsorb – 400mm cavity — NRC 0.65 —  $\alpha_w$  0.70 — SAC C

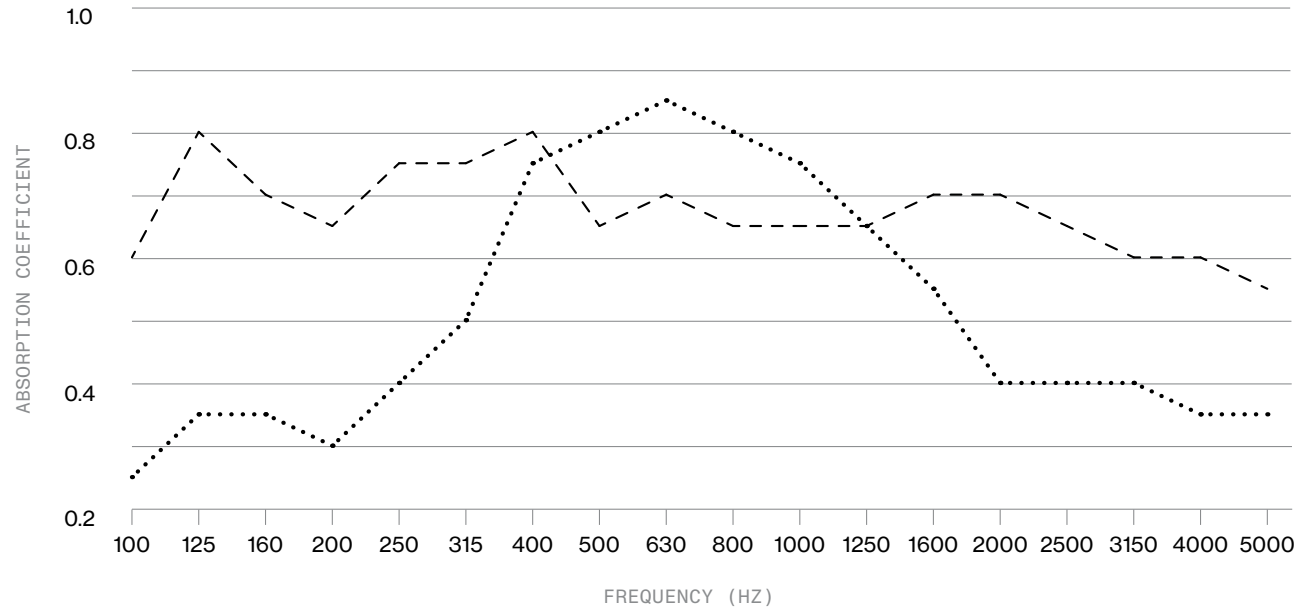
# DECORLUX—25.5%

DECORLUX PANEL, 25.5% OPEN AREA WITH 90MM OR 400MM CAVITY

Acoustic panels



OPEN AREA 25.5%	NRC 0.60—0.70
<b>PRODUCT OVERVIEW</b> Finishes available - DecorImage, Raw and Undercoated Fire Rating - Group 1, Non-combustible Green Certifications - GECA	
<b>TESTING OVERVIEW</b> NATA Certified   AS 1045-1988, measurement of sound absorption in a reverberation room Product tested with framing method as per installation guidelines. <a href="#">View Installation Guidelines here.</a> Substrate: Fibre Cement	
STANDARD LENGTHS AND WIDTH 2400/3000x1200mm	



ITEM / DESCRIPTION	100	125	160	200	250	315	400	500	630	800	1K	1.25K	1.6K	2K	2.5K	3.15K	4K	5K
..... DecorLux <sup>1</sup>	0.25	0.35	0.35	0.3	0.4	0.5	0.75	0.8	0.85	0.8	0.75	0.65	0.55	0.4	0.4	0.4	0.35	0.35
----- DecorLux <sup>2</sup>	0.6	0.8	0.7	0.65	0.75	0.75	0.8	0.65	0.7	0.65	0.65	0.65	0.7	0.7	0.65	0.6	0.6	0.55

DecorLux<sup>1</sup> – AL1000S/570 fibre-cement panel 6mm thick, open area 25.5% with IAB – 90mm cavity — NRC 0.60 —  $\alpha_w$  0.50 — SAC D  
 DecorLux<sup>2</sup> – AL500S/300 fibre-cement panel 6mm thick, open area 25.5% with IAB – 400mm cavity — NRC 0.70 —  $\alpha_w$  0.70 — SAC C

# GET IN TOUCH