



**SAFETY**

**Model RBA8302-300 SERIES**

## PEDESTAL MOUNTED EMERGENCY SHOWER

□ Model: RBA8302-300



### General:

Model RBA8302-300 is a pedestal mounted emergency shower with stainless steel showerhead and 25mm stainless steel stay-open ball valve with pull rod activation, complying with AS 4775-2007. The unit is provided with a universal identification sign and a waterproof weekly inspection card.

### Fluid Connection:

Max Inlet Pressure	500 kPa
Inlet	32mm Female BSP
Flow Rate	1.27 l/s
Min Supply	25mm

### Showerhead:

185mm diameter stainless steel showerhead.

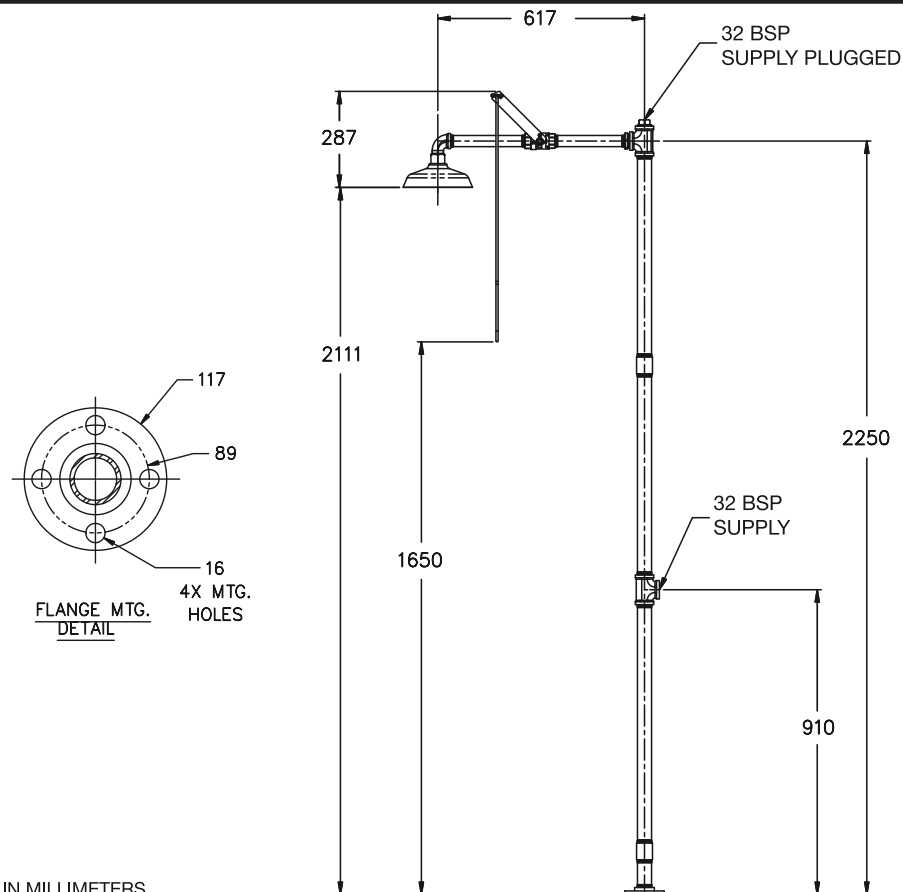
### Valve:

25mm stainless steel ball valve, fitted with stainless steel actuator arm and 735mm pull rod.

### Construction & Installation:

32mm schedule 40 stainless steel pipe, with 125mm floor fixing flange, fixings by others. Installation should be in accordance with AS 4775-2007, and local authority requirements.

**Compliance:** AS 4775-2007  
ANSI Z358.1-2004



#### GENERAL NOTES:

1. ALL DIMENSIONS ARE IN MILLIMETERS

As improvements in the design and performance of RBA products are continuous, specifications may be supplied to change without notice. The illustrations and descriptions herein are applicable to production as of the date of this Technical Data Sheet. Revised 08/10. Printed in Australia. © 2010 by RBA Group TD/Model RBA8302-300/0810

**SYDNEY • MELBOURNE • BRISBANE • PERTH**  
**Phone: 1300 788 778 • Fax: 1300 788 878 • info@rba.com.au • www.rba.com.au**