

designersplash

Colour Your World



NOVER

70
Years
ANNIVERSARY



What is DesignerSplash?

DesignerSplash is a flame retardant aluminium composite splashback and wall panelling solution. It is the ideal alternative to glass, acrylic and porcelain tiles and can be used for residential and commercial applications.

FEATURES AND BENEFITS:

- Cost effective
- Flame retardant (suitable behind cook tops)
- Easy to install & fabricate
- Water resistant
- Mirror like gloss & seamless finish
- Low maintenance
- Lightweight & durable

TYPICAL APPLICATIONS:

- Kitchen Splashbacks
- Shower Linings
- Retail Fitouts
- Laundry Areas
- Feature Walls
- Wall Linings



Flame retardant



Low maintenance



Seamless finish



Easy to install



Cost effective



Water resistant

FEATURES	DESIGNERSPLASH	GLASS	ACRYLIC	PORCELAIN
Fire resistance	✓	✓	✗	✓
DIY & easy to cut	✓	✗	✓	✗
Affordability	✓	✗	✓	✓
Easy to install	✓	✗	✓	✗
Low maintenance	✓	✓	✓	✗
Large panel	✓	✗	✓	✗



SPECIFICATIONS:

AVAILABLE IN THREE SHEET SIZES:

- 3100MM X 750MM X 4MM
- 1550MM X 750MM X 4MM
- 2100MM X 1550MM X 4MM

ANODISED FINISH PROFILES:



End Caps/Edge Trims
2400MM / 3100MM



External Corner
2400MM / 3100MM



Internal Corner
2400MM / 3100MM



Sheet Joiner
2400MM / 3100MM

Disclaimer - All DesignerSplash colours shown are representations and for illustration purposes only. Actual colour and design may vary or look different in a larger size. If colour and/or design match is critical, please speak with your local account manager to view a sample.

COLOUR RANGE:



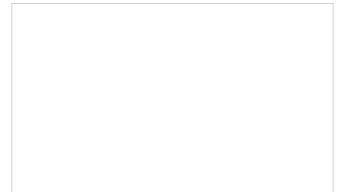
GREY CLOUD



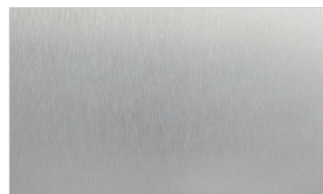
PACIFIC



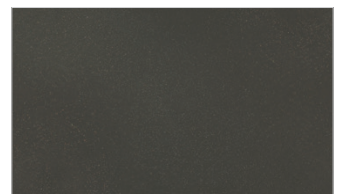
PEWTER



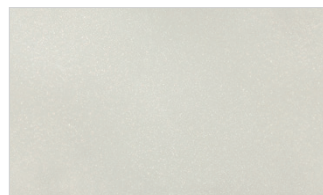
GLACIER WHITE



BRUSHED SILVER



CINDER



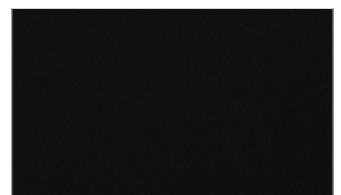
SANDSTONE



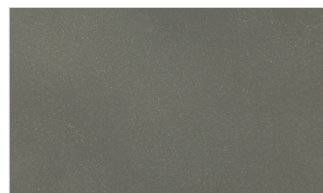
SCARLET



VAPOUR



NIGHT SKY

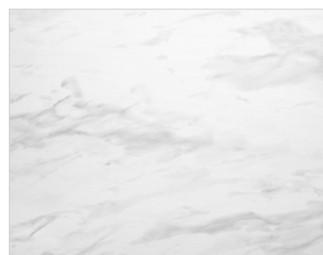


STORM

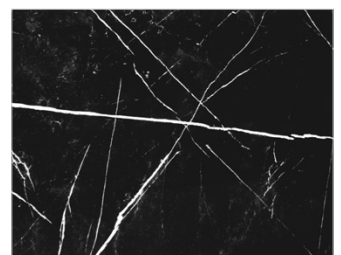


OCEAN SPRAY

NEW COLOURS:



WHITE MARBLE



BLACK MARBLE

INSTALLATION GUIDE:

STEP 1 - CLEAN

Ensure the area is smooth, clean and dry. Alcohol wipes can be used to clean the area prior to install.

STEP 2 - MEASURE

Measure the area DesignerSplash is going to cover. Make sure that you include any power points (if applicable).

Mark the measurements on the reverse side of the panel. Note: If any electrical works are to be performed, this should be carried out by a certified electrician. It is recommended that if you have an electric or induction cook top, please make sure there is a 20mm minimum set back from the rear edge of the cook top to the surface of DesignerSplash. If you have a gas cook top, please make sure there is a 110mm minimum clearance between the naked flames (i.e. edge of the burner) to the surface of DesignerSplash. This requirement is mandatory unless the panel is being adhered to a non-combustible substrate such as an existing tile wall, concrete, or brick. Where more than one panel is needed to cover the length required, for a silicone joint, please allow for a 3mm gap or please use our anodised sheet joiner.

STEP 3 - CUT

Working on the reverse side of the panel, cut your panels using either a circular saw (with aluminium cutting blades), jigsaw using an aluminium blade, panel or table saw with aluminium carbide blade, hand router using high speed TC blade or a hole saw or drill using HSS drill bits. For power points, use a drill for the corners, then use a jigsaw to cut out the edges. If you are using DesignerSplash corner joiners or trims, these will need to be cut to size using a drop saw with an aluminium blade.

STEP 4 - FIX

Test the positioning by applying the panel against the area without using any bonding materials. Once satisfied, remove protective masking on the reverse side. Apply double-sided tape (558400) on the area in vertical strips, 400mm apart. For fixing DesignerSplash to the wall, use HB Fuller Toolbox original (code: 520116) or other MS neutral cure silicone adhesives. For fixing to concrete, tiles, glass or stainless steel, use HB Fuller High Tack adhesive (code 5201156). With the use of a caulking gun, create a zig-zag pattern between the vertical strips of double sided tape.

Optional Step: If you have chosen to use DesignerSplash Decorative Trims, place a bead of silicone along the top edge of the panel and then place the trim cut to size on top of the splashback. Repeat the operation for the side(s) of the panel if required before proceeding to step 4. External and internal corner joiners will also need to be installed prior to the DesignerSplash sheet using a bead of silicone.

STEP 5 - INSTALL

Fix DesignerSplash onto the wall and apply even pressure across the panel. Leave for a few minutes before carefully removing the protective film on the face of DesignerSplash. Apply a bead of silicone between the bench top and the splashback to avoid any moisture leakage. Also seal the edges of the splashback if you are not using DesignerSplash Decorative Trims.

ELECTRICAL EARTHING

In situations where there is any kind of power point, switch, light fitting or wire running behind the sheet, an earth connection must be made. We recommend using a crimp lug (a simple screw connector) that connects to a bonding wire which runs down the back of the sheets. We recommend that the installation of the earthing be carried out by a registered electrician. See www.nover.com.au for more information.



NOVER

NOVER & CO PTY LIMITED
ABN 15 001 706 038

19 WONDERLAND DRIVE, EASTERN CREEK NSW 2766
LOCKED BAG 90, WETHERILL PARK BUSINESS CENTRE NSW 1851

T 1300 668 371 F 1300 668 372 E info@nover.com.au

www.nover.com.au



070106