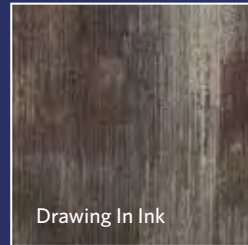
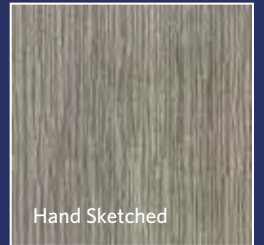


## NATURALLY DRAWN

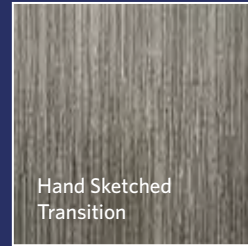
Drawing In Ink / Hand Sketched  
Hand Sketched Transition  
Watercolour Lesson



Drawing In Ink



Hand Sketched



Hand Sketched  
Transition



Watercolour Lesson



**Ontera**  
A MILLIKEN COMPANY



## INSPIRED. INSPIRING.

*"Art takes nature as its model."* Aristotle

From nature's calendar to the artist's studio, from the outside to the inside, creative minds have joined to create three designs drawn from nature and reinterpreted through artistic expression. Watercolour Lesson, Drawing In Ink, Hand Sketched and Hand Sketched Transition, each one lovingly crafted through its artist's medium: watercolour, ink and pencil sketch. Four designs, each with a story to tell.



Watercolour Lesson in Dungaree(top), and Pencil Grey(bottom), Hand Sketched Transition in Dungaree, ashlar tile installation

*"How strange that nature does not  
knock, and yet does not intrude."*

**Emily Dickinson,**  
letter to Mrs J.S. Cooper









# Patterns

Naturally Drawn features four coordinating patterns:  
Watercolour Lesson, Drawing in Ink, Hand Sketched and Hand Sketched Transition.



Watercolour Lesson



Hand Sketched



Drawing in Ink



Hand Sketched Transition



Hand Sketched Transition, Hand Sketched and Watercolour Lesson, ashlar & monolithic tile installation



# Coordination from Top to Bottom

While Hand Sketch Transition is coordinated for smooth gradients between Hand Sketched colours, Drawing In Ink and Watercolour Lesson are also designed to easily coordinate with the Hand Sketched colourline while creating dramatically different visual effects. Use the full kit of parts in different areas of a project to define spaces while maintaining tight coordination throughout.



# Hand Sketched & Hand Sketched Transition

Hand Sketched is created with free-flowing fine pencil lines by the artist's own hand to form shifting ombré tones that undulate smoothly across the tile.

The Hand Sketched design is offered with a companion, accessory design, Hand Sketched Transition. The Hand Sketched Transition design enables an effortless colour flow from one Hand Sketched colour into the next, without hard lines or distracting colour breaks.

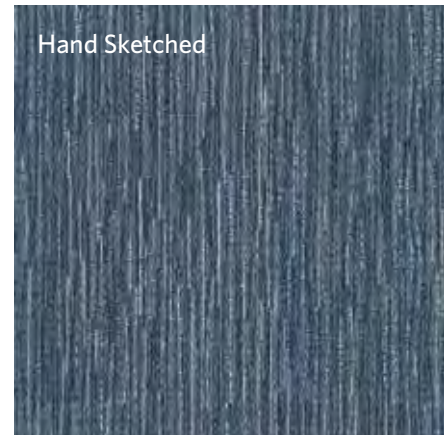
Sometimes blending complementary colours, sometimes merging contrasting colours, Hand Sketched Transition allows you to create a smooth and continuous flow of organically changing colour across the floor plane.



HSK139 Ocean



HST139-73 Ocean/Skyline



HSK73 Skyline



HSB73-139 Skyline/Ocean



**Hand Sketched in Ocean (top), Hand Sketched Transition in Ocean/Skyline (middle), Hand Sketched in Skyline (bottom), ashlar tile installation**



Drawing In Ink in Shell Brown/Peppercorn (top) and Watercolour Lesson in Dungaree(bottom), ashlar tile installation





*The inspiration for Naturally Drawn was the colours and lines of nature reinterpreted through the exquisite and delicate mediums of watercolour, ink, and handdrawing.*





Watercolor Lesson in Dungaree and Pencil Grey, ashlar tile installation







Drawing In Ink in Meadow/Olive, ashlar tile installation



(top to bottom) Drawing In Ink in Antique Sand / Vintage Taupe,  
Hand Sketched in Vintage Taupe, and Watercolor Lesson in Vintage Taupe, ashlar tile installation

# COLOURLINE

## Hand Sketched



HSK124-15 ANTIQUE SAND



HSK173 SPOTTED DOVE



HSK144-108 SHELL BROWN



HSK153-13 ASH

## Hand Sketched Transition(Top)



HST15-124-44 ANTIQUE SAND / VINTAGE TAUPE



HST173-94 SPOTTED DOVE / TINSMITH



HST144-108-114 SHELL BROWN / PEPPERCORN



HST153-133-13 ASH / JET

## Hand Sketched



HSK124-44 VINTAGE TAUPE



HSK94 TINSMITH



HSK174-108 PEPPERCORN



HSK133-13 JET

## Hand Sketched Transition(Bottom)



HSB124-15-44 VINTAGE TAUPE / ANTIQUE SAND



HSB94-173 TINSMITH / SPOTTED DOVE



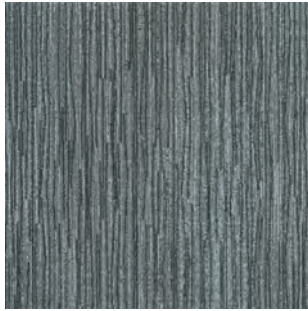
HSB108-144-114 PEPPERCORN / SHELL BROWN



HSB133-153-13 JET / ASH



HSK139 Ocean



HSK139-153 DUNGAREE



HSK45-21 FERN



HSK23-21 MEADOW



HST139-73 Ocean/Skyline



HST139-118-153 DUNGAREE /  
PENCIL GREY



HST45-88-21 FERN /  
MOSS GREEN



HST100-23-21 MEADOW / OLIVE



HSK73 Skyline



HSK118-153 PENCIL GREY



HSK45-88 MOSS GREEN



HSK100-23 OLIVE



HSB73-139 Skyline/Ocean



HSB118-139-153 PENCIL GREY /  
DUNGAREE



HSB88-45-21 MOSS GREEN /  
FERN



HSB23-100-21 OLIVE / MEADOW

# COLOURLINE

## Watercolor Lesson



WLN21-12 ANTIQUE SAND



WLN144-83 SPOTTED DOVE



WLN118-165 SHELL BROWN



WLN13-153 ASH



WLN21-124 VINTAGE TAUPE



WLN59-145 TINSMITH



WLN13-79 PEPPERCORN



WLN133-13 JET

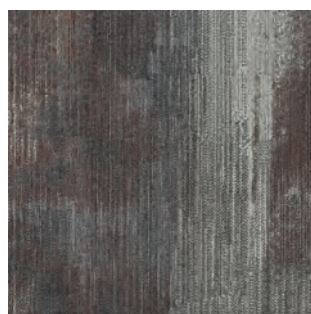
## Drawing In Ink



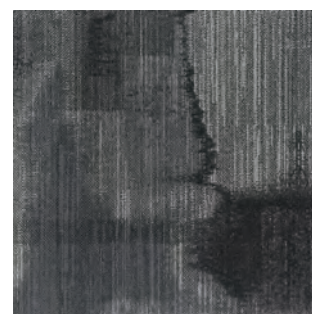
DWK44-15 ANTIQUE SAND /  
VINTAGE TAUPE



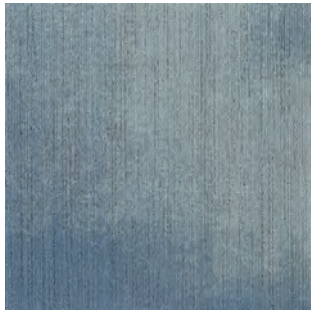
DWK94-68 SPOTTED DOVE /  
TINSMITH



DWK165-79 SHELL BROWN /  
PEPPERCORN



DWK144-13-153 ASH / JET



WLN157 Ocean



WLN158-139 DUNGAREE



WLN103-45 FERN



WLN23-21 MEADOW



WLN73 Skyline



WLN25-132 PENCIL GREY



WLN64-45 MOSS GREEN



WLN23-54 OLIVE



DWK153-73 Ocean/Skyline



DWK 139-153 DUNGAREE /  
PENCIL GREY



DWK103-21-45 FERN / MOSS  
GREEN



DWK78-23-21 MEADOW /  
OLIVE

# NATURALLY DRAWN

Drawing In Ink / Hand Sketched

Hand Sketched Transition / Watercolour Lesson

## Construction

Tufted, Textured Loop

## Tile Size

50 cm x 50 cm (19.7" x 19.7")

## Yarn Type

100% Milliken Certified Nylon Type 6,6

## Dye Method

Millitron®

## Stain Repel/Stain Resist/Soil Release

StainSmart®

## Antimicrobial

AlphaSan® Built-In Protection

## Nominal Total Thickness

7.4 MM Average

## Backing

PVC-Free Underscore® ES Cushion

Available with TractionBack®

## Texture Appearance Retention Rating (TARR)

Severe Use

## Warranties

15 Year Wear Warranty

15 Year Anti-Static Warranty

15 Year Dimensional Stability Warranty

## Indoor Air Quality - CRI Green Label Plus™

GLP3237, Carpet Category 5Y

## Recommended Installation Method



ASHLAR

This cushion-back carpet tile product is covered by one or more patents, published applications and/or patents pending. Specifications are subject to normal manufacturing tolerances and may be changed without prior notice.



Declare.



green building council australia  
MEMBER

**Ontera**  
A MILLIKEN COMPANY

Australia  
Toll Free: 1800 668372

New Zealand  
Toll Free: 0800 668372



**Growing greener for over 100 years.**  
**Visit [milliken.com](http://milliken.com) for more information**