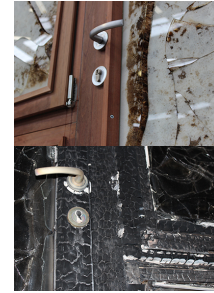




Safety for all Bushfire Attack Levels (BAL's), including BAL-FZ, without the need for shutters. Tested, approved, compliant.



Range inclusions

- Custom made, size limitations apply
- Frame made from self-extinguishing, FSC® certified, Manilkara Bidentata
- Double glazed with special fire protection glazing
- German hardware fittings
- Finished with Adler Lignovit Lasur wood preservative, or low VOC spray-painted or stained in the colour of your choice by request
- U-values from a very low 1.4
- Ember / flyscreens for all windows as per Australian Standard
- Suitable for Passive House
- Tested, approved and compliant to all relevant Australian Standards
- Compliance certification supplied with windows and doors

Available in the range:

BAL-40 Windows: European style tilt & turn, fixed picture, clerestory/tilt, sliding, shapes

BAL-40 Doors: French, bi-fold and lift-slide doors, single hinged glass doors

BAL-FZ Windows: European style tilt & turn, fixed picture, clerestory/tilt, sliding, shapes

BAL-FZ Doors: French doors, lift-slide doors, single hinged glass doors

2 Options for BAL-FZ windows and doors

Tested to AS1530.8.2

Measured heat flux during the test 365mm from the unexposed side of the glazing (inside) reached a radiation level of 1.1 KW/m² for Paarhammer tilt & turn windows, fixed window, hinged door and French doors, and below 1.0 KW/m² on lift-slide sliding doors.

To put this into perspective, **naked skin can tolerate of 5KW/m² for approximately 10 seconds.**

Tested to AS1530.4 (-/30/-)

Limitation: '...those elements of the building that are less than 10m from the edge of the classified vegetation shall conform to AS1530.8.2.'

Measured heat flux during the test 365mm from the unexposed side of the glazing (inside) resulted in a radiation level of almost 25KW/m².

