

CONIBASE®
CONIDECK®
CONIROOF®
CONIBRIDGE®

Conipur® Waterproofing Systems



 **BASF**

The Chemical Company



Protecting Your Structure

BASF's waterproofing systems are designed to stop water ingress through surfaces in order to prevent damage to occupied spaces and to equipment located below. The Conipur® waterproofing membrane system is based around unique polyurethane membrane, available as a fast setting two part material for spray or hand application. The systems include specific solutions for parking garages, reservoirs and secondary containment, as well as for basements, below-ground and underwater structures.



Whatever the nature of the structure, protection against the elements is key to retaining its integrity. Climate movement factors and the effects of aggressive atmospheric chemicals and salts make surfaces vulnerable to deterioration. Utilising engineered waterproofing systems to prevent water ingress optimises structural performance to meet these environmental demands. Selecting the right system is about more than achieving durability. You need a high quality, flexible solution that will reduce whole-life costs

and can be installed with minimum downtime. The Conipur® membrane system combines the flexibility to cope with the thermal and dynamic stresses with a toughness for high wear applications.

The Construction Chemicals Division of the BASF Group is the world's largest provider of construction chemicals products, systems and services for new construction, repair and refurbishment. BASF offers sound technical advice to assist Clients, Consultants, Architects and Contractors from specification support at design phase right through to on-site support during material use.



We are committed to working in partnership with you, providing a single source of expertise. Our vast product range allows us to add value through tailor-made solutions.



CONIBASE®

Waterproofing in Civil Engineering Applications

The Conibase® civil engineering membrane system is ideal for basements, foundation slabs, or underground concrete structures. The advent of deeper basements, building on reclaimed land and the need for durable solutions has been one of the biggest challenges in the construction industry. Together with this, is the necessity to achieve watertight structures. The continuous Conibase® membrane provides an excellent solution to this problem.

Conibase® is very flexible yet tough and can be applied by spray to give a fast and continuous membrane application. Suitable for contact with ground or seawaters, it has found its way onto all types of tunnel construction, including cut and cover and driven tunnels. Depending on the type of structure, varying demands are placed on the waterproofing, for example; it must be reliable, durable and be able to withstand any prevailing mechanical and chemical stresses imposed upon it.

Conibase® can be used in most waterproofing applications below ground level and can be used in conjunction with the Conideck® parking garage membrane system to give a complete package for basements. Conibase® is also suitable for upgrading water retaining structures to prevent the ingress of potential pollutants.

Unlike sheet membranes the continuous nature of the product also allows the waterproofing of complex structures that could not be otherwise effectively waterproofed. Its fast cure and durability proven over more than 25 years in use worldwide make this the optimum solution for all below ground waterproofing applications.





CONIDECK®

Durable Parking Garage Protection

BASF Construction Chemicals has the answer to car park protection with Conideck®, a range of crack-bridging and non crack-bridging, wear-and-tear resistant car park deck coatings for both exposed and covered decks. Conideck® is suitable for all parking garage applications, from condominiums to the largest shopping malls. The Conideck® system builds up in various formulations to cope with the degree of traffic and the forces on the parking garage.



Incorporating the Conipur® membrane common to all Conipur® membrane systems, Conideck® also features unique, specially engineered wear coats to create a hard wearing yet resilient barrier to protect the membrane from abrasion and loads from vehicles. These wearcoats set the Conideck® system apart and made it the premier system for parking garages. A range of special topcoats

are available to allow the use of different textures and colours to make your car park special.

All car parks wear, and one of the greatest issues with most systems is how to repair them quickly if they are damaged or worn out. This is solved with the Conipur® fast cure range of primers, membranes, wearcoats and topcoats which allow the complete reinstatement of the full system and return to traffic after only 12 hours.



All systems are installed by specialist contractors with the back-up of skilled BASF personnel who can assist in drawing up the right specification for every application. The function of the system extends beyond protection to the practical considerations of differentiation of parking bays, traffic lanes and pedestrian walkways. Varying the deck surface through the use of colours and light-reflective coatings improves the usability of the car park and increases its aesthetics, creating a safe and welcoming atmosphere.



CONIROOF®

Complete Protection for Roofs

BASF Construction Chemicals' polyurethane coatings provide waterproofing membranes to protect roofs. Our versatile systems for flat and pitched roofs are suitable for application to all major roof types and designs using advanced polyurethane technology to create impervious, monolithic membranes. Coniroof® systems are easy to install on complex structures, buried and exposed roofs in both new build and refurbishment situations.

BASF's waterproofing systems are suited to a wide range of surfaces, from dense concrete decks to plywood and lightweight metal panels. Coniroof® membrane is a fully bonded system, able to resist the effects of wind suction, elevated temperature, thermal shock and minor structural movement. Coniroof® waterproofing systems can also be applied to vertical surfaces, enabling easy application to complicated details such as penetrations, ventilators, skylights and chimneys.

Unlike sheet systems, the seamless, monolithic waterproofing systems offered by BASF avoid weak spots caused by laps, welds or seams, thereby providing greater durability and protection. Even green roofs can be waterproofed with BASF's Coniroof® systems, which can be installed over any properly designed deck - whether constructed from concrete, wood or steel.

The ability of our waterproofing systems to withstand the loads imposed by landscaping, allows us to offer an effective solution for green roofs that can be quickly installed to save time and reduce costs.





CONIBRIDGE®

Bridge Deck Waterproofing Solutions

Bridge decks are constantly under stress as water, chlorides, acid rain, act on them. Seasonal and day cycle extremes of temperature, together with the impact

of traffic and vibration, place decks under further stress. As steel reinforcing bars corrode and expand, concrete can crack and deteriorate. The disruption caused by resultant repair work impacts on traffic and safety, and can be costly for commercial and private users.



BASF's Conibridge® advanced polyurethane waterproofing systems for bridge decks prevent the ingress of water into the concrete deck. Conibridge® systems are spray applied, resulting in a thorough and seamless waterproofing membrane that is fully bonded to the substrate below and to the asphalt road surface above.

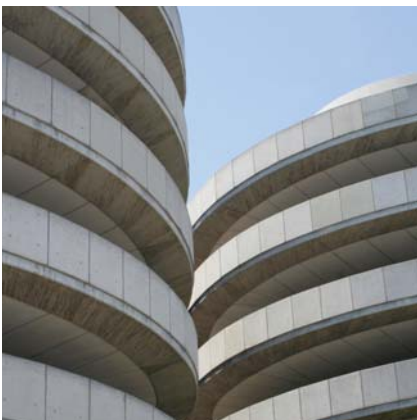
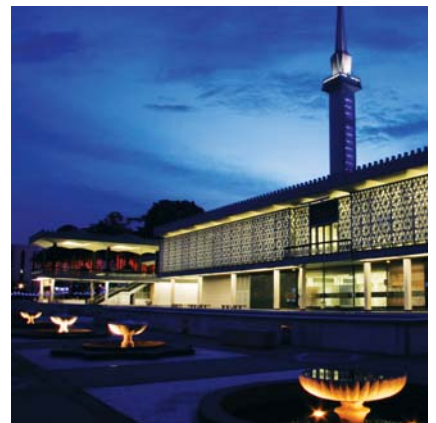
BASF bridge deck waterproofing systems are based on years of continuous development and testing. In use since 1985, our systems have a proven track record as advanced engineered solutions to bridge waterproofing problems.





Project References

BASF's Conipur® membranes are the membranes of choice for many of the region's iconic projects, from the National Mosque in Kuala Lumpur to Australia Square tower in Sydney, the innovative Vivo City in Singapore to Hong Kong MTR tunnels and decks, to the Asaki bridge in Japan and the new Dalian International Distribution Centre in China.



Intelligent Solutions from BASF Construction Chemicals

Concresive® - Resin Based Mortars, Adhesives and Injection Systems
Conibridge® - PU Based Membranes to Protect Bridge Decks
Conideck® - Hand and Spray Applied Waterproof Membrane Systems
Coniroof® - PU Based Roofing Systems
Emaco® - Concrete Repair Systems
Finestone® - Exterior Insulation and Finishing Systems (EIFS)
Glenium® - For Hyperplasticized Concrete
Masterflex® - Joint Sealants
Masterflow® - Precision and Structural Grouts
Masterpren® - Preformed Membrane Waterproofing Sheets
Masterseal® - Coatings and Waterproofing
Mastertop® - Decorative and Industrial Flooring Solutions
MBrace™ - Composite Strengthening Systems
Meyco® - For Shotcrete and Spraying Equipment
PCI® - Tile Fixing and Cement Underlays
Pozzolith® - For Water-reduced Concrete
Rheobuild® - For Superplasticized Concrete
Rheomix® - For Improved Block Mortars
Rheoplus® - Cost-effective Products for Hyperplasticized Concrete
Ucrete® - Flooring Solutions for Harsh Environments
WABO® - Expansion Control Systems

Australia

+61 2 8811 4200

Bangladesh

+880 2 9348374

China

+86 21 2320 3869

Hong Kong

+852 2407 4291

India (Sri Lanka, Nepal)

+91 22 4157 7777

Indonesia

+62 21 526 2481

Japan

+81 3 3582 8815

Korea

+82 2 3707 3154

Malaysia

+60 3 5628 3888

New Zealand

+64 9414 7233

Pakistan

+92 21 111 550 550

Philippines

+63 2 889 4321

Singapore

+65 6861 6766

Taiwan

+886 49 2255 138

Thailand

+66 2 664 9222

Vietnam

+84 650 374 3100

www.ap.cc.basf.com

 **BASF**
The Chemical Company

BASF is the world's leading chemical company: The Chemical Company. Its portfolio ranges from chemicals, plastics and performance products, to agricultural products, fine chemicals and oil and gas. As a reliable partner, BASF helps its customers in virtually all industries to be more successful. With its high-value products and intelligent solutions, BASF plays an important role in finding answers to global challenges such as climate protection, energy efficiency, nutrition and mobility.

Further information on BASF is available on the Internet at www.basf.com