



Merlin Series[®]



SCREENS

Louvreclad's Merlin Series[®] provides the ultimate in spanning and cantilevering capabilities. Designers can mount this blade in various configurations.

Distinctive Features + Diverse Applications + Multitude of Benefits:

- Delivered to site ready-made for single-trade installation
- Ultimate spanning and cantilevering capabilities

Attention to Detail:

- 430mm width
- 55mm depth
- Maximum blade span: 4000mm



**EXCELLENT SPANNING
CAPABILITIES**

 **LOUVRECLAD[®]**

Thinking outside for inside performance

DRAFT SPECIFICATION

Screens will be Louvreclad Merlin Series[®] base module. Blades will be _____ [Operable/Fixed] if fixed [state pitch] mm pitch at [state angle]° angle.

Base Material & Finish

Screens will be manufactured in [powder coated/anodised] aluminium finish in [state colour]

Installation and Mounting

Installation and mounting details will be designed in accordance with proprietary systems and recommendations as designed and manufactured by Louvreclad Pty. Ltd. Phone: 1300 165 678 Email: sales@louvreclad.com

Base Material Options

- Extruded Aluminium

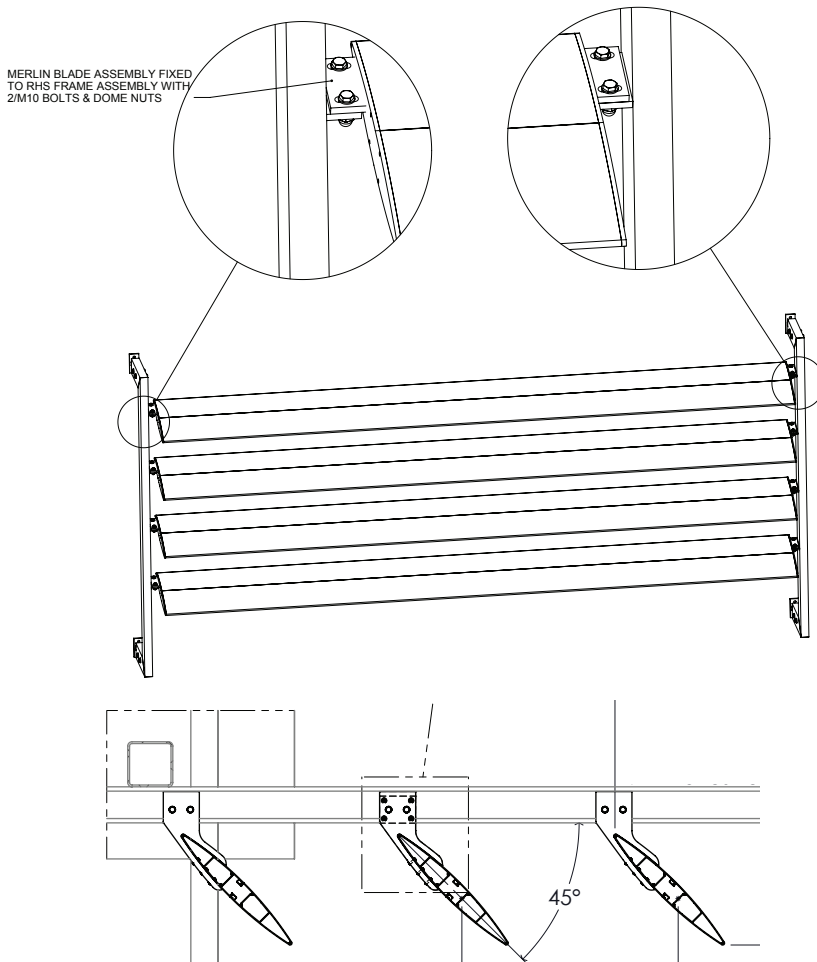
Finishes Available

Choose from the following range of finishes:

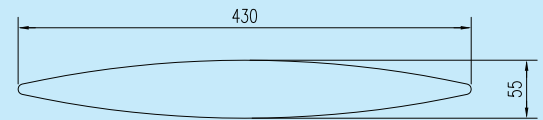
- complete powder coated range
- complete anodised range

Specialised coatings are also available on request.

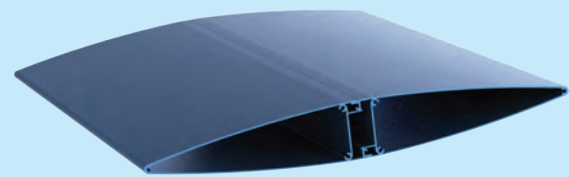
TYPICAL FIXING DETAIL:



PROFILES



MERLIN - 430





i WOULD YOU LIKE TO KNOW MORE?

If you have any questions about this product, or if you would like to speak to a member of our expert team about how we can tailor a solution for you, call: **1300 165 678** or visit: **louvreclad.com**