

# Wickham Series<sup>®</sup> Elliptical louvres



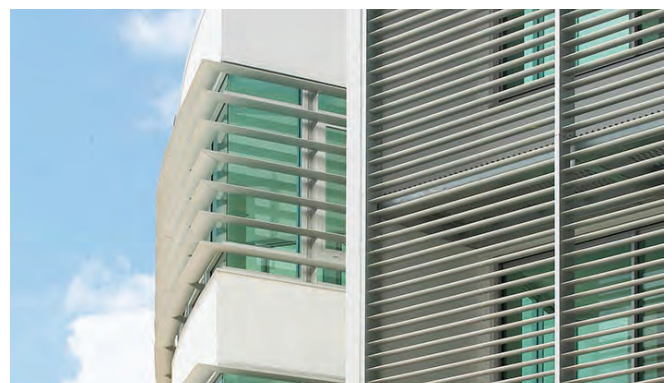
Louvreclad's Wickham Series<sup>®</sup> elliptical louvres is another ideal screening solution for architectural sun screening on buildings. An ellipsoid blade which has high impact resistance, making it one of the most long lasting designs on the market.

## Distinctive Features + Diverse Applications + Multitude of Benefits:

- Supplied in modular panels or mounted individually on custom-built brackets
- High impact resistance
- Ideal for mitred corners

### Attention to Detail:

- Maximum blade span: 3200mm
- 200mm ellipsoid
- 40mm depth
- Designed, engineered and certified for incidental live load.



**HIGH IMPACT RESISTANCE**



*Thinking outside for inside performance*

## DAY DESIGN

## PRESSURE DROP TEST CERTIFICATE

Test 4203P-P



**Test Specimen:**

**Wickham Series Louvre**

**Test Specimen Dimensions:**

1800 mm (H) x 1200 mm (W) x 141 mm (D)

**Specimen Specifications:**

48% Open Area per Module

Blades @ 145 mm Pitch & 45° angle

Throat Height @ 71 mm

**Test Location:**

Twin Reverberation Rooms

National Acoustic Laboratories

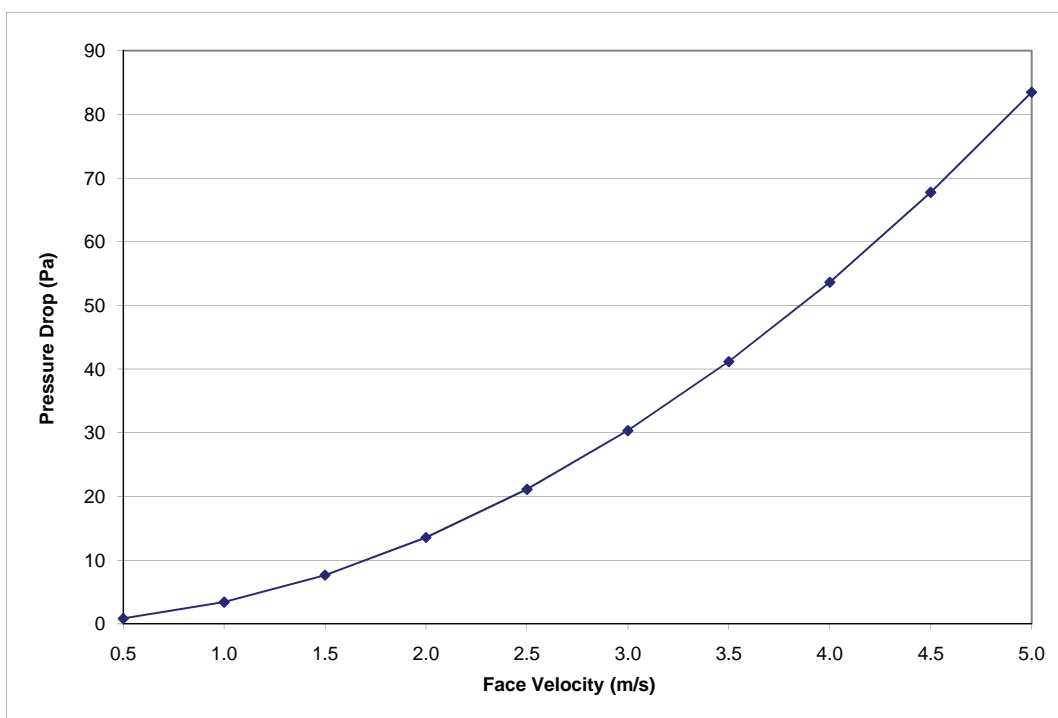
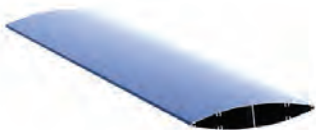
126 Greville Street, Chatswood NSW

**Instrumentation:**

- Vaisala Digital Barometer (Type PTB201AD)

- Kestrel Anemometer (Model K2000)

Face Velocity (m/s)	Pressure Drop (Pa)
0.5	0.9
1.0	3.5
1.5	7.7
2.0	13.6
2.5	21.2
3.0	30.4
3.5	41.2
4.0	53.7
4.5	67.8
5.0	83.5




**Date of Test:** Wednesday, 19 August 2009  
**Project Number:** 4203P-P

**Test Engineer:** Alex Li, BE(Mech) Hons  
 For and on behalf of Day Design Pty Ltd

## DRAFT SPECIFICATION

Screens will be Louvreclad Wickham Series<sup>®</sup>. Blades will be \_\_\_\_\_  
[Operable/Fixed] if fixed [state pitch] mm pitch at [state angle]° angle.

### Base Material & Finish

Screens will be manufactured in [powder coated/anodised] aluminium finish in [state colour]

### Operation Method (if applicable)

The operation method will be [Electric Motor/Manual winder/other - choose method]

### Control System (if applicable)

Automated Control will be by [specify sensors and control system]

### Accessories (if applicable)

Screens will be fitted with [nominate options/accessories from the selection].

### Installation and Mounting

Installation and mounting details will be designed in accordance with proprietary systems and recommendations as designed and manufactured by Louvreclad Pty. Ltd. Phone: 1300 165 678 Email: sales@louvreclad.com

### Base Material Options

- Extruded Aluminium

### Finishes Available

Choose from the following range of finishes:

- complete powder coated range
- complete anodised range

*Specialised coatings are also available on request.*

### Operating Options

If specifying operable screens please nominate the operating system from the following:

- remote winder control
- electric actuator

### Accessories

**Rain sensors:** Screens can automatically close against rain.

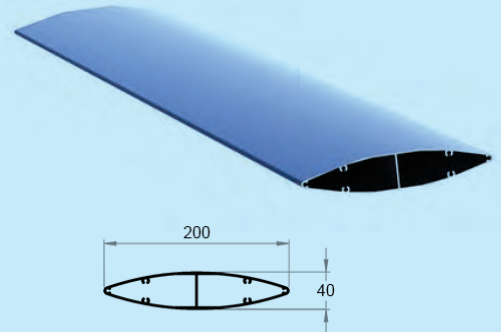
**Light sensors:** Optional sensor controls can be set to automatically tilt the Louvreclad screen blades to shield the building's interior from glare or direct sunlight.

**Wind sensors:** Wind sensors will provide additional flexibility in response to shifting weather patterns and wind gusts.

**Temperature sensors:** Screen controls can be set to respond to ambient interior temperatures and adjust angle and tilt to shade the interior or admit more warming sunlight.

**Timers:** Pre-set opening, closing and tilting configurations.

## PROFILES





**📄 WOULD YOU LIKE TO KNOW MORE?**

If you have any questions about this product, or if you would like to speak to a member of our expert team about how we can tailor a solution for you, call: **1300 165 678** or visit: [louvreclad.com](http://louvreclad.com)