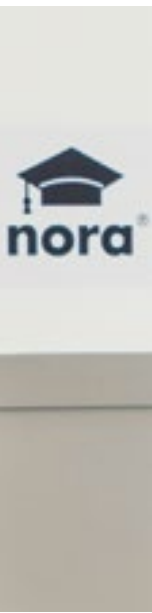




RUBBER FLOOR COVERINGS AND ACCESSORIES 2017

nora[®]





Innovative sustainability – Made in Germany

We are driven by the idea of creating extraordinary and individual floor solutions that can withstand the most diverse and highest load patterns. We have found in natural rubber the ideal material and properties that can meet this claim.

Rubber has the unique capacity to withstand heavy loading permanently without sacrificing quality. We are rightfully proud of our expertise in having perfected this product of nature. nora® floor coverings are slip resistant and flame retardant, exhibit outstanding ergonomic properties, and absorb footfall sounds. Moreover, they are free of plasticisers (phthalates) and do not need coatings. These points are highly appreciated by our customers in the most diverse fields.

Accordingly, nora® floor coverings can be found everywhere in the world, for instance in

- hospitals and nursing facilities. There they are used in highly sterile areas subject to the strictest hygiene requirements like operating theatres, but also to provide a cosy ambience in patient rooms.
- Airports, trains, and railway stations – areas that are frequented by millions of people every day and so must fulfil the highest requirements.
- Schools, universities, and nursery schools – institutes that prioritise a natural indoor climate and healthy indoor air.
- Office, administration, and industrial buildings that must comply with special regulations and standards.

Fulfilling our customers' and partners' requirements is a matter of course to us. We would like to give you our assurance that your decision in favour of nora® floor coverings is the right one: today, tomorrow, and thereafter. This is our claim, and we guarantee it!



CONTENTS

norament® floorings **8 – 19**

noraplan® floorings **20 – 37**

nora® nTx **38 – 39**

nora® special floorings **40 – 53**

norament® stairtreads **54 – 59**

nora® stair accessories **60 – 63**

nora® accessories **64 – 71**

Technical data **72 – 73**





Two product lines – boundless possibilities

Everyone aspires to individuality. Why should this claim stop at the floor covering?
Our two product lines noramenti® and noraplan® form a perfectly practical synthesis of design,
functionality, and environmental compatibility. We are therefore convinced that we can offer
our customers the perfect solution for every need and creative idea. Get to know our product
portfolio on the following pages, and learn more about how you can set highlights with
nora® floor coverings and system solutions.



Clariant innovation Center CIC, Frankfurt, Germany

norament®

This classic rubber floor covering is a convincing combination of sustainable quality and outstanding functionality. Pressed under high pressure, the tiles present a very dense, sealed surface. This makes them extremely resistant to wear and supports fast and easy cleaning. The product portfolio includes five designs. From the classical pastille, norament® 926/825, which has been in service for decades at Frankfurt Airport, the hub of European air traffic. To norament® 926 crossline, presenting a 3D structure for an agile, living effect. norament® floor coverings are suitable for projects that must fulfil extreme requirements, e.g. in ice rinks or oil rigs.



Wuppertal Suspension Railway, Germany

© Dirk Wilhelmy

noraplan®

noraplan® floor coverings are available in rolls or tiles with a great many designs and colours for virtually unlimited design potential. The product range is made up of eight different designs. The new addition, noraplan® valua, is an excellent choice where a cosy ambience is important, e.g. in patient rooms, old people's homes, but also in representative fields. This is underscored by the living quality of its linear surface structure combined with the natural properties of rubber. Its functional properties make noraplan® floorings suitable for a wide range of needs. Excellent slip resistance and oil and grease resistant properties make noraplan® floorings a convincing solution in heavy duty areas.

Outstanding quality nora[®] floor coverings and accessories

Eco-labels, approvals, and Environmental Product Declarations

The Blue Angel

One of the world's most famous and oldest eco-label, initiated by the Cabinet of Germany. This guarantees that products fulfil particularly stringent environmental, health, and performance requirements, including emission and constituent specifications.

Approval criteria: RAL-UZ 120

www.blauer-engel.de

Awarded to: norament[®] 926 and noraplan[®] standard floorings and nora[®] installation materials



Greenguard Gold

Greenguard Gold Certification promotes the protection and safety of sensitive persons in regards to indoor air quality. Certified products fulfil stringent emission standards, affording an invaluable contribution to the quality of indoor air.

Approval criteria: UL 2818 Standard for Chemical Emissions for Building Materials

www.greenguard.org

Awarded to: All nora[®] floor coverings and nora[®] installation materials and nora[®] accessories



BRE "A+" rating

The BRE rating assesses the environmental impact of products. The environmental profiles of similar products in a category are compared with each other and assessed. The best products in a comparison group are awarded the "A+" rating.

Approval criteria: BRE Global Methodology for Environmental Profiles of Construction Products.

www.bre.co.uk

Awarded to: noraplan[®] standard floorings with "A+" rating



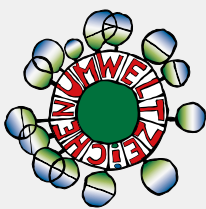
Austrian eco-label

The Austrian eco-label is awarded by the Austrian Ministry of Agriculture, Forestry, Environment, and Water Management. It guarantees environmentally friendly products and services. Certified floor coverings exert as small an impact as possible on the environment and health over their whole life cycle.

Approval criteria: UZ 56

www.umweltzeichen.at

Awarded to: norament[®] 926 and noraplan[®] standard floorings



M1

The Finnish test mark M1 is regarded as the highest certification for building products in the Scandinavian region. Besides stringent emission thresholds for total volatile organic compounds (TVOCs), the label also includes a sensory odour test.

Approval criteria: Finnish Classification of Indoor Environment 2008

www.rakennustieto.fi/index/english.html

Awarded to: norament[®] 926 and noraplan[®] standard floorings





Étiquetage

In France, building products are classified according to their potential for emissions.

The object is to eliminate risks to the health of persons inside the building.

Approval criteria: French VOC label: Emissions dans l'air intérieur (Décret n° 2011-321)

www.developpement-durable.gouv.fr/Chapitre-I-Mode-d-emploi-de-l.html

Awarded to: nora® floor coverings and nora® accessories have been awarded the top rating "A+"

Byggvarubedömningen

The Swedish institute Byggvarubedömningen assesses the sustainability of building products with respect to their emissions, constituents, and production process. The products are classified as "Recommended", "Accepted", or "To be Avoided".

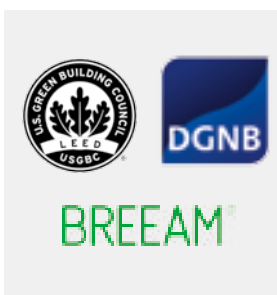
Approval criteria: Building Material Assessment Criteria

www.byggvarubedomningen.se

Awarded to: norament® 926 and noraplan® standard floorings are classified as "Recommended" in a majority of cases

EPDs from Institut Bauen und Umwelt e.V.

EPDs (Environmental Product Declarations) are issued on the basis of international standards. They document the ecological aspects of a product over its whole life cycle. An EPD is a neutral, but invaluable source of information in the choice of sustainable building products. All norament® and noraplan® floor coverings have been awarded EPDs by Institut für Bauen und Umwelt e.V. (IBU). www.bau-umwelt.de



Indoor Air Comfort GOLD

The Eurofins certification Indoor Air Comfort GOLD combines emissions requirements with the most important European quality mark, in one certificate. With this international label, planners, building owners and architects can specifically use products that do not compromise indoor air by giving off impurities. It means that more purposefully selected products can be used that have been certified thanks to their low emission levels and their sustainable properties.

Building certifications

nora® rubber floor coverings, nora® accessories, and nora® installation materials can enhance the sustainability properties of buildings for DGNB (German Sustainable Building Council), LEED (Leadership in Energy and Environmental Design), BREEAM (BRE Environmental Assessment Method), and other certifications.

www.dgnb.de/de/

www.usgbc.org/leed

www.breeam.de/

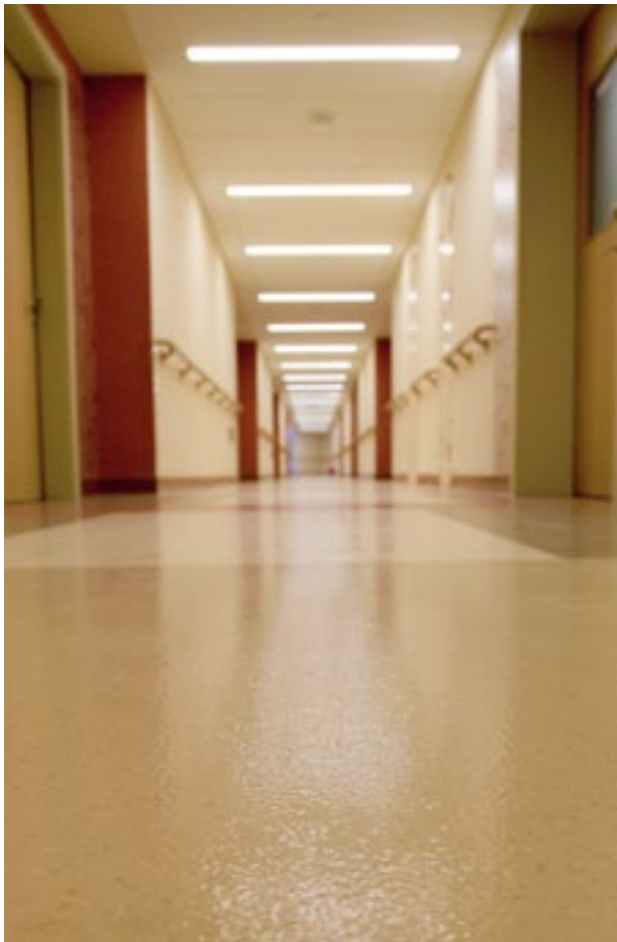
Corporate certifications, memberships, and cooperation agreements



norament®

norament®, the pioneer among rubber floor coverings, represents absolute top quality and functionality. The standard square tile sizes of 1004 x 1004 mm are available in a wide range of colour and surface designs. Get to know our norament® product portfolio on the following pages, and feel free to call your personal contact with any questions you may have.





Beijing Eden Hospital, Peking, China



Kita am Seepark, Freiburg, Germany



Kulturforum Hanau, Germany



Deutsches Architekturmuseum, Frankfurt, Germany



norament® 926/825

One-coloured, classic round pastille for use in extremely heavy (926) and heavy traffic areas (825).



Ⓜ 0170



Ⓜ 6173



Ⓜ Ⓜ 0007



Ⓜ Ⓜ 0884



Ⓜ Ⓜ 0214



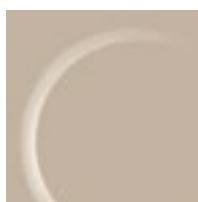
Ⓜ 2079



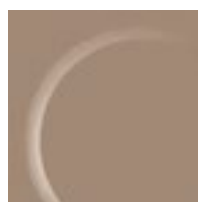
Ⓜ Ⓜ 0319



Ⓜ Ⓜ 0733



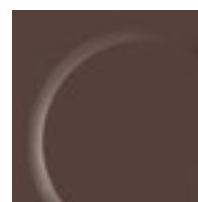
Ⓜ 2685



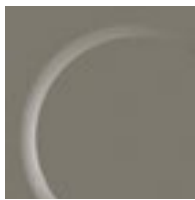
Ⓜ Ⓜ 6172



Ⓜ 6192



Ⓜ Ⓜ 2074



II J 0882



II J 0749



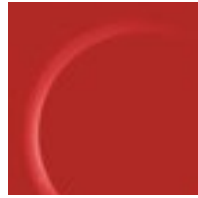
II J 0716



I J 0702



III J 0890



IV 0866



IV 6191



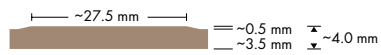
IV 0846*

norament® 926

20

Art. 926/354

□ ~1004 mm x 1004 mm



nora® profile connection dimension: E + U

Resists most oils and greases

These colours can also be delivered as:

J Stairtread norament® 926, page 56

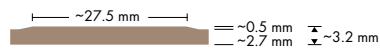
○ = Price category

norament® 825

20

Art. 825/1902

□ ~501 mm x 501 mm

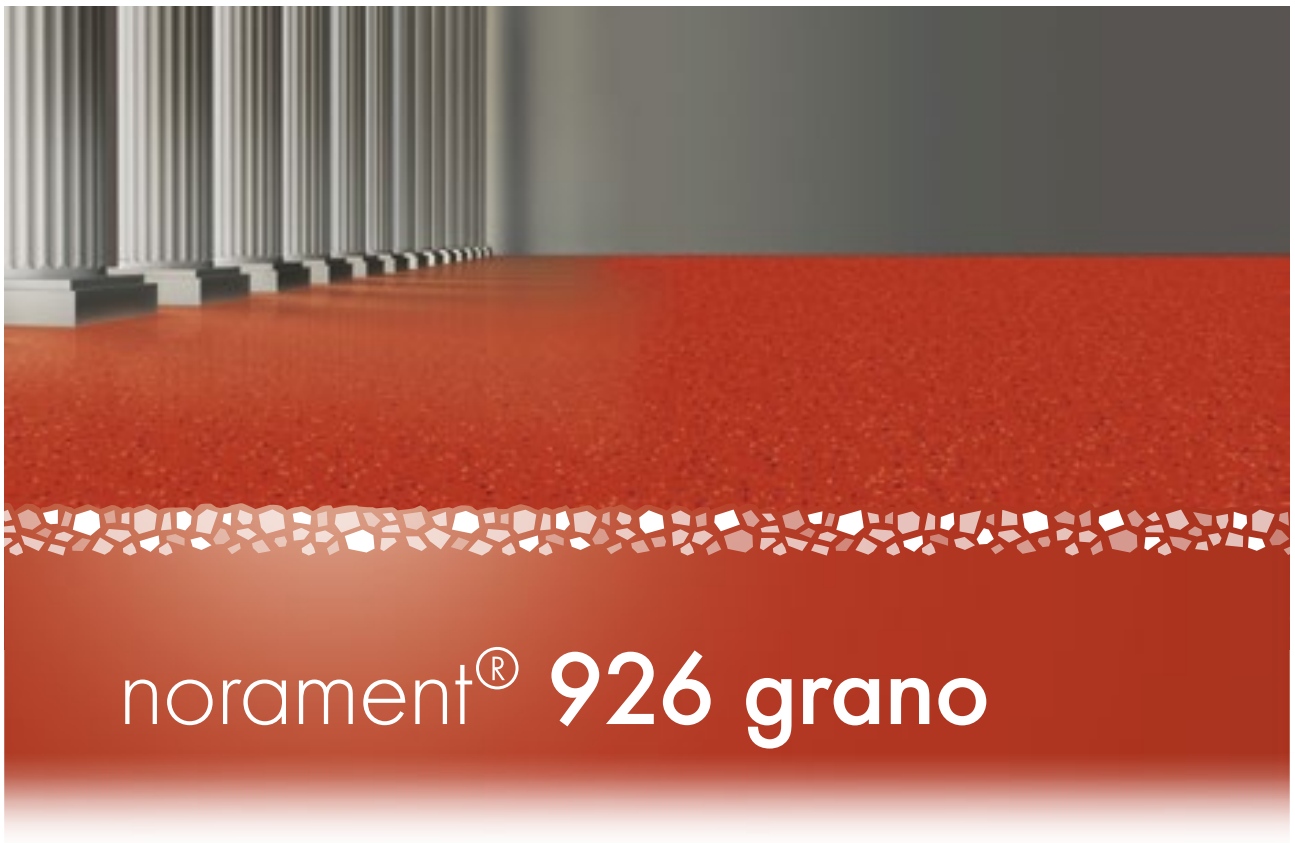


nora® profile connection dimension: D + U

*Colour design by Sir Norman Foster

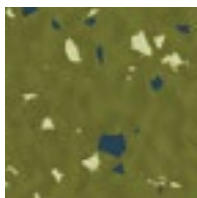


BMW AG, Leipzig, Germany

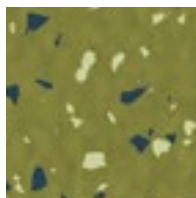


norament® 926 grano

A granular design rich in contrast with a hammerblow surface or a cubic structure for use in extremely heavy traffic areas.



4868



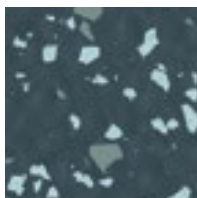
4869



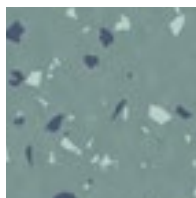
 4870



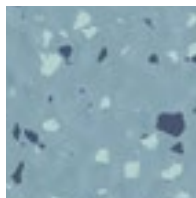
 4871



4872



4873



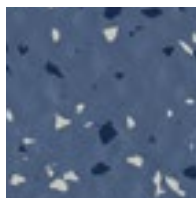
 4874



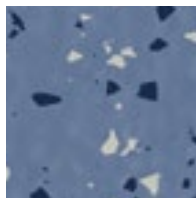
4875



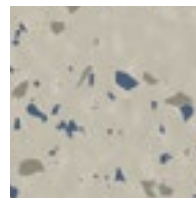
4876



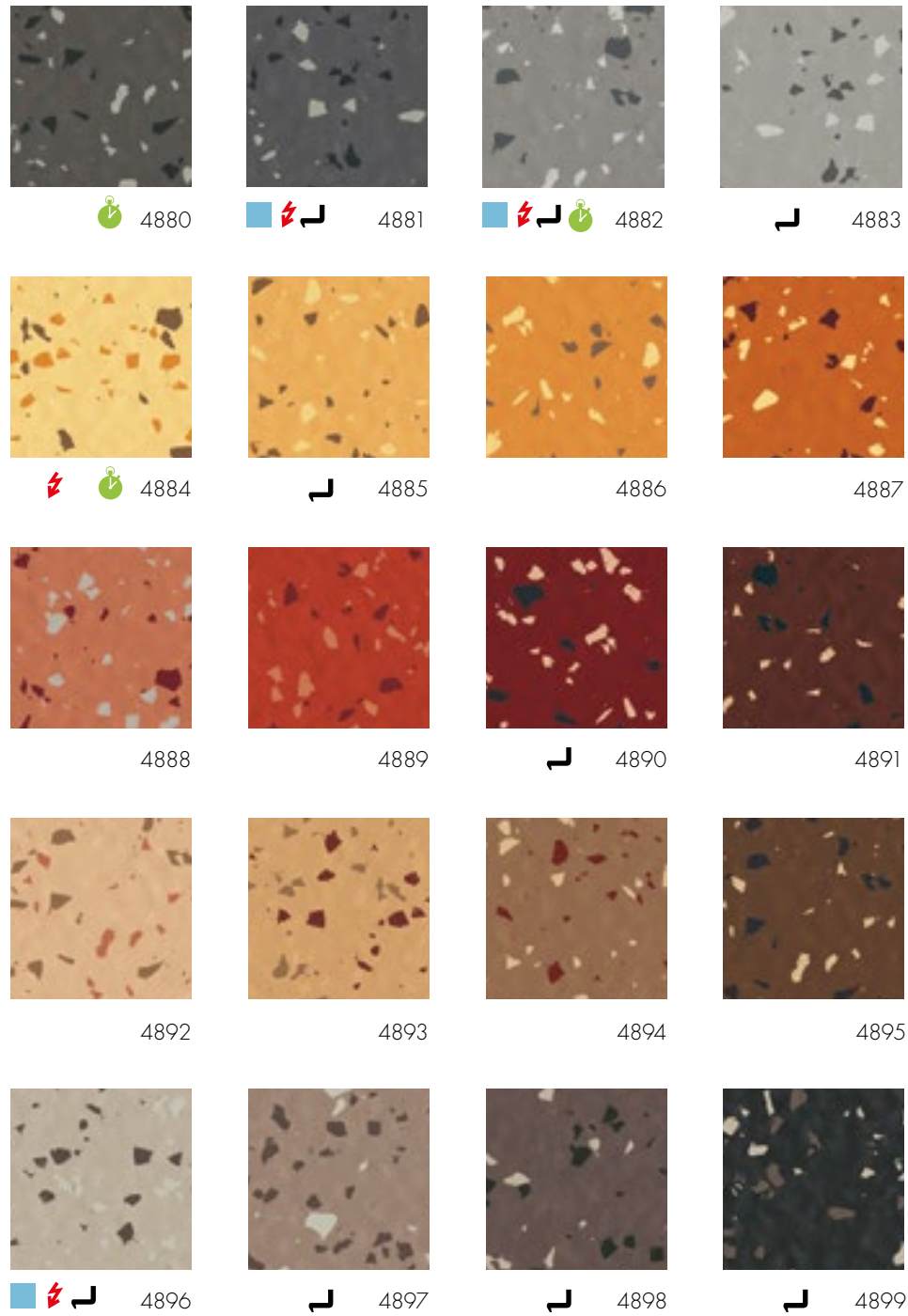
 4877



    4878



    4879



norament® 926 grano

32

Art. 926 grano/1880

□ ~1004 mm x 1004 mm



nora® profile connection dimension: E + U

Resists most oils and greases

Slip resistant R9

These colours can also be delivered as:

⚡ Special flooring norament® 928 grano ed electrostatically dissipative, page 45

└ Stairtread norament® 926 grano, page 56

norament® 926 grano

5

Art. 926 grano/1911

□ ~610 mm x 610 mm



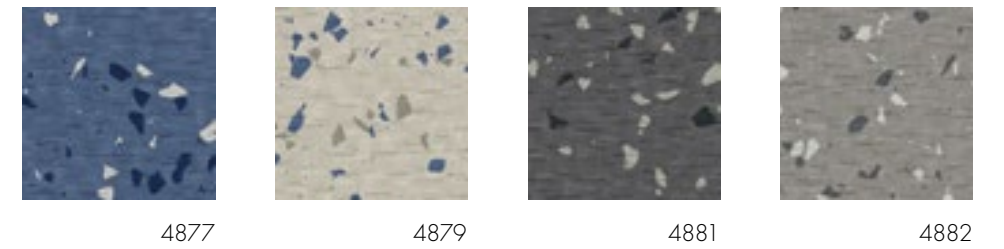
Resists most oils and greases

Slip resistant R9

🌱 Also available as norament® 926 grano nTx, page 39

Note: More designs and information on nora® nTx can be found at www.nora.com or on request.

norament® 926 grano · with a cubic-structure



norament® 926 grano (with a cubic-structure)

4

Art. 926 grano/1870

□ ~1004 mm x 1004 mm

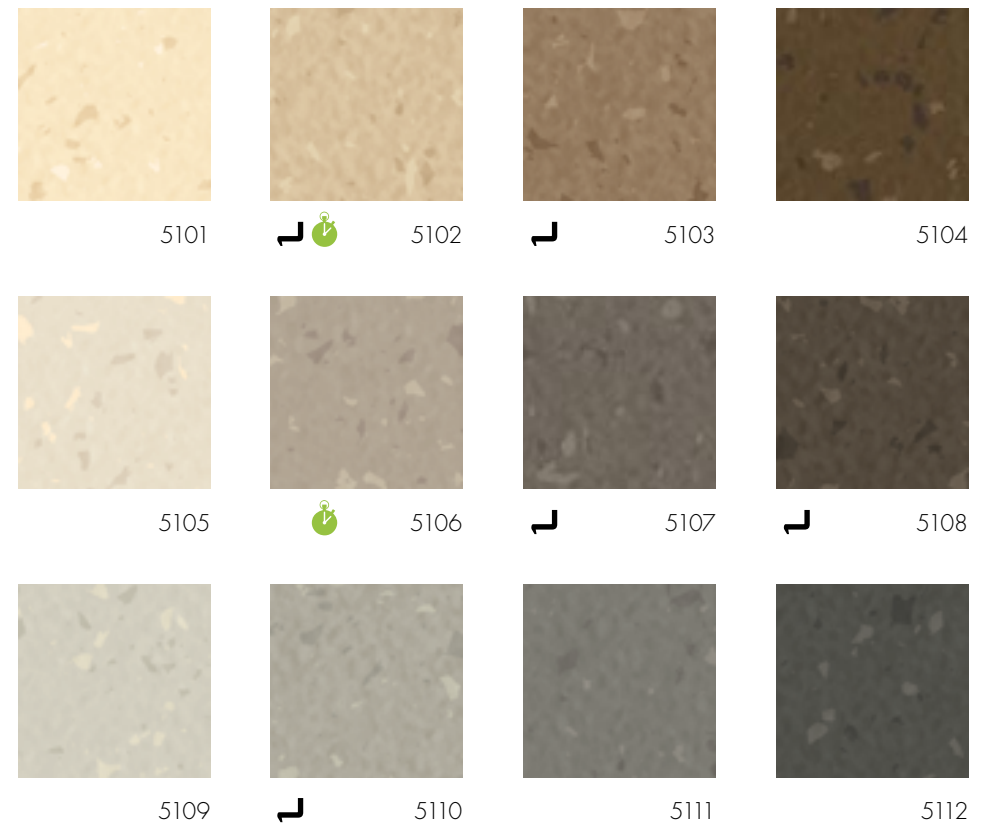


Slip resistant R10

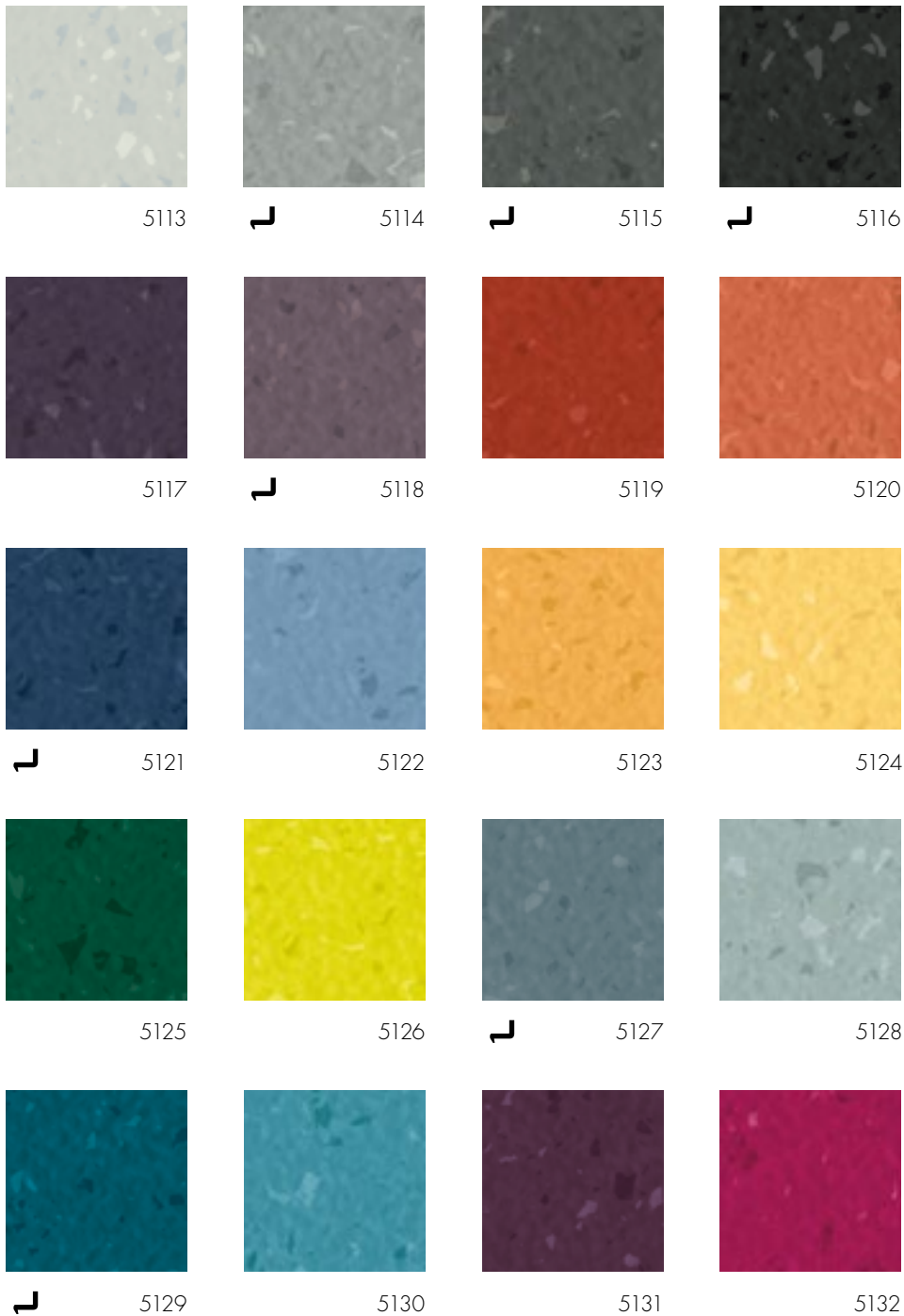


norament® 926 satura

Tone-in-tone granular design with a hammerblow surface for use in extremely heavy traffic areas.



Zhejiang Provincial Hospital of TCM, Hangzhou, China



norament® 926 satura

32

Art. 926 satura/1880

□ ~1004 mm x 1004 mm



nora® profile connection dimension: E + U
Resists most oils and greases

These colours can also be delivered as:

Stairtread norament® 926 satura, page 58

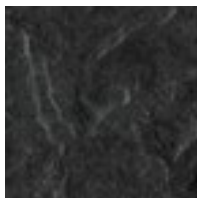
Also available as norament® 926 satura nTx, page 39

Note: More designs and information on nora® nTx can be found at www.nora.com or on request.

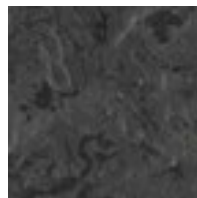


norament® 926 arago

Flat, direction-oriented relief structure with fine grain design and modern marbling for maximum demands. No two tiles are the same - each square meter is totally unique.



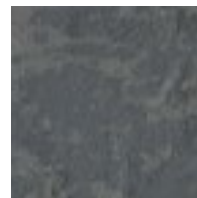
5170



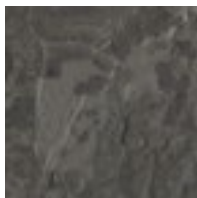
5171



5172



5173



5174



5175



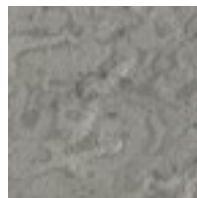
5176



5177



5178



5179



5180



5181

norament® 926 arago

 12

Art. 926 arago/3118

□ ~1004 mm x 502 mm

 ~3.5 mm

nora® profile connection dimension: E + U

Resists most oils and greases

Order-related smaller formats can be cut for individual installation combinations without minimum quantity requirements from norament® 926 arago tiles with the standard dimensions of 1,004 mm x 502 mm.

We supply tiles with chamfered edges on request such that the tile character of the installed floor covering is even more emphasized.

Variations in colour and design, even within one production batch, define the product's aesthetic character.

norament® 926 arago with chamfered edges

 12


Art. 926 arago/3119

□ ~998 mm x 497 mm

 ~3.5 mm

nora® profile connection dimension: E + U

Resists most oils and greases

 Also available as norament® 926 arago nTx, page 39

Note: More designs and information on nora® nTx can be found at www.nora.com or on request.



noraplan®

noraplan® floor coverings are available in rolls or tiles with a great many designs and colours for virtually design potential. Learn more about the noraplan® product portfolio, the natural properties, and the uses.





Hospital Crailsheim, Germany

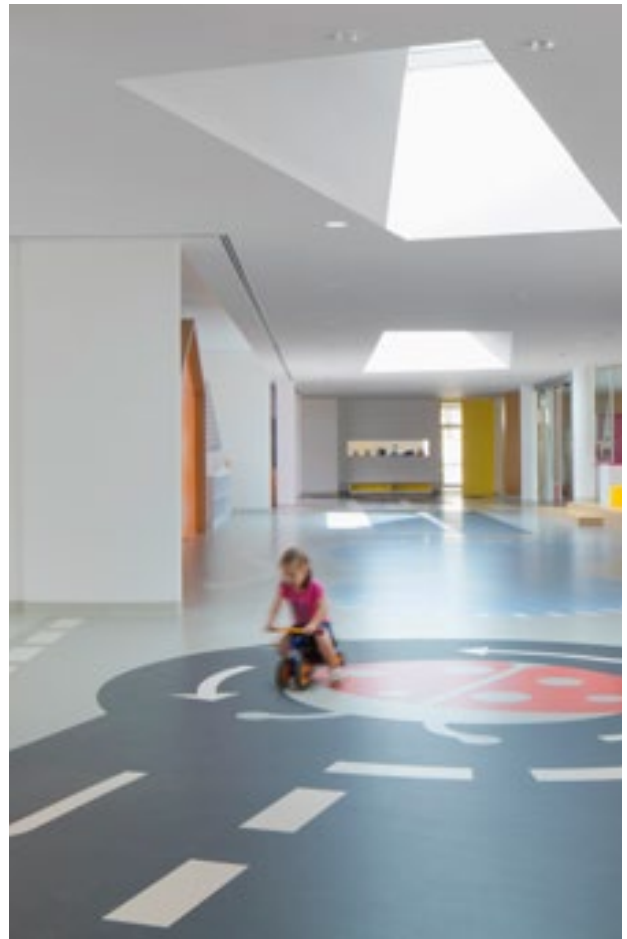


Wuppertal Suspension Railway, Germany

© Dirk Wilhelmy



Football museum, Dortmund, Germany



Ladybird Early Learning Centre, Dubai, United Arab Emirates

© Gerry O'leary



noraplan® sentica

A changing base colour of harmoniously matched colour compositions in a smooth surface for heavy traffic areas.



6500



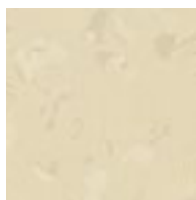
6501



6502



6503



6504



6505



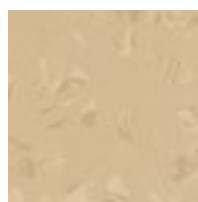
6506



6507



6508



6509



6510



6511



noraplan® sentica

38

Art. 1700

~1.22 m x 15.0 m

Art. 2700

~610 mm x 610 mm

15 □ = 5.58 m² in one carton

~2.0 mm

nora® profile connection dimension: A + U

noraplan® sentica

12

Art. 1701

~1.22 m x 12.0 m

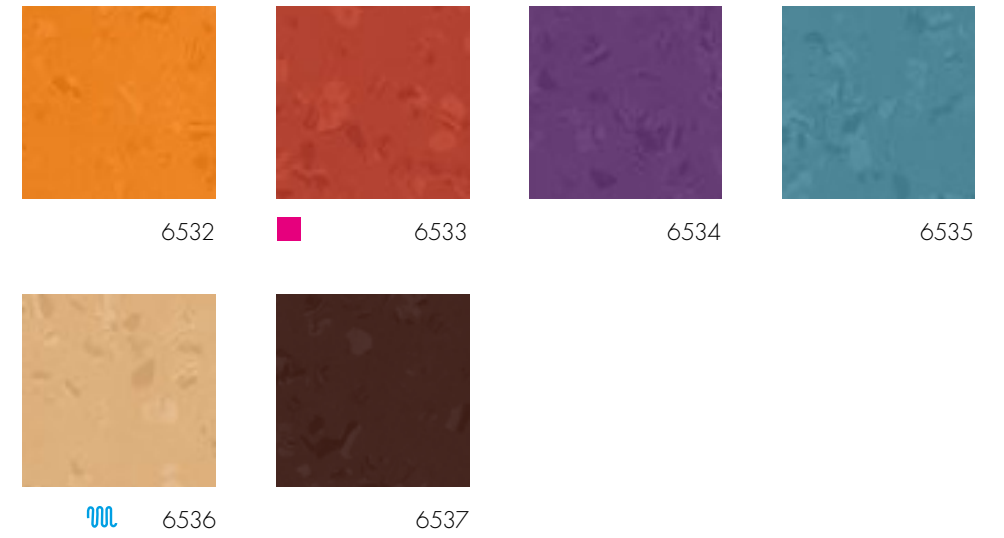
Art. 2701

~610 mm x 610 mm

10 □ = 3.72 m² in one carton

~3.0 mm

nora® profile connection dimension: D + U



These colours can also be delivered as:

- Special flooring noraplan® sentica ed electrostatically dissipative, page 46
- Special flooring noraplan® sentica acoustic footfall-sound-absorbing 20 dB, page 49
- Also available as noraplan® sentica nTx, page 39

Note: More designs and information on nora® nTx can be found at www.nora.com or on request.















Universitätsklinikum Düsseldorf Strahlentherapie Linac 4, Germany



noraplan® signa

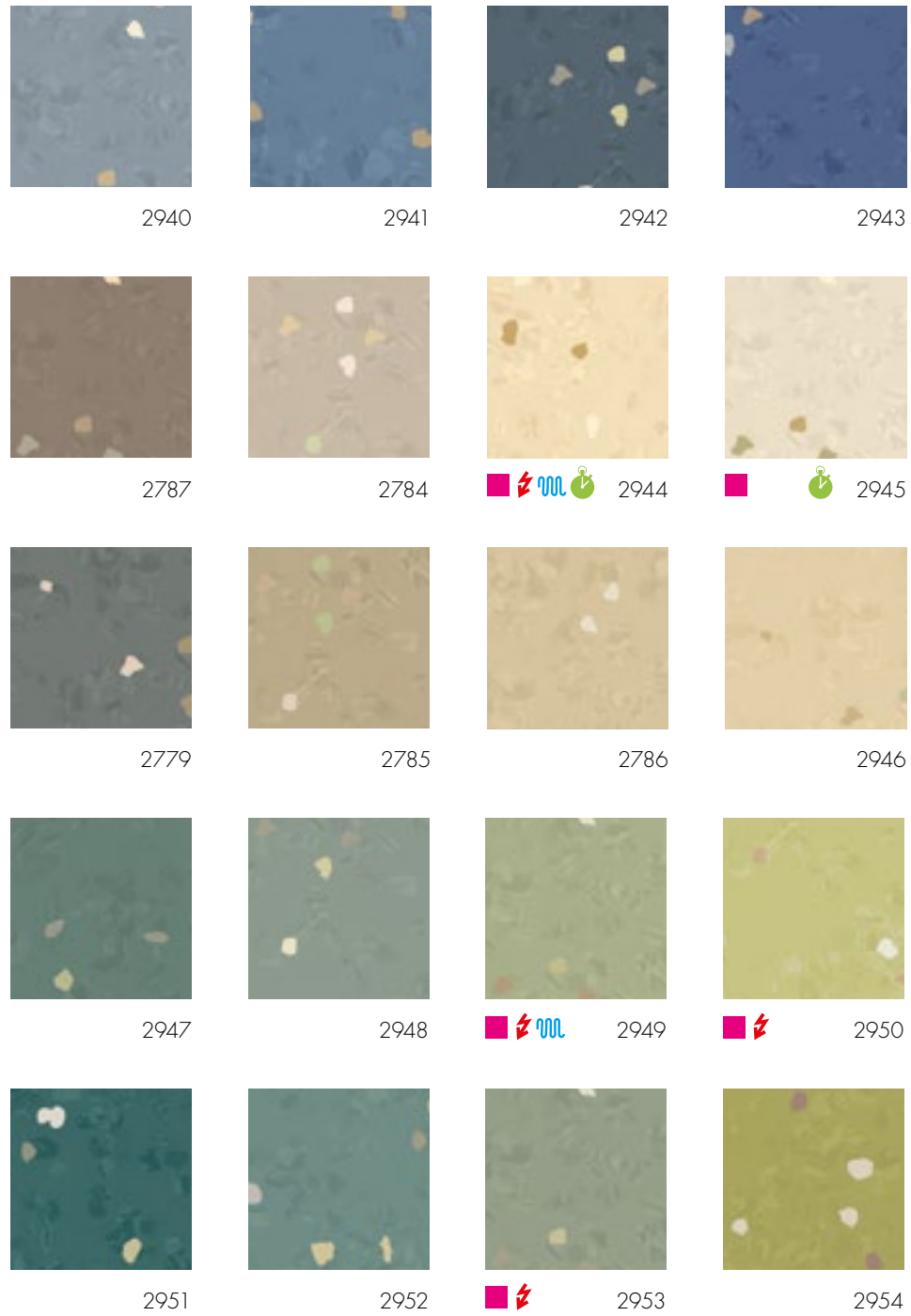
A changing base colour consisting of three harmoniously matched colour components and characteristic granule inclusions in a smooth surface for heavy traffic areas.

			
■ ⚡ 🔊 🌱 2780	■ ⚡ 🔊 2930	■ ⚡ 🌱 2931	2932
			
■ 2781	2933	2934	2935
			
■ ⚡ 🔊 2936	■ ⚡ 🔊 🌱 2937	2938	■ ⚡ 2939



BASF-LuKids, Ludwigshafen, Germany

© Lioba Schneider



noraplan® signa

48

Art. 1462

~1.22 m x 15.0 m

Art. 2462

~610 mm x 610 mm

15 □ = 5.58 m² in one carton

~2.0 mm

nora® profile connection dimension: A + U

noraplan® signa

17

Art. 1463

~1.22 m x 12.0 m

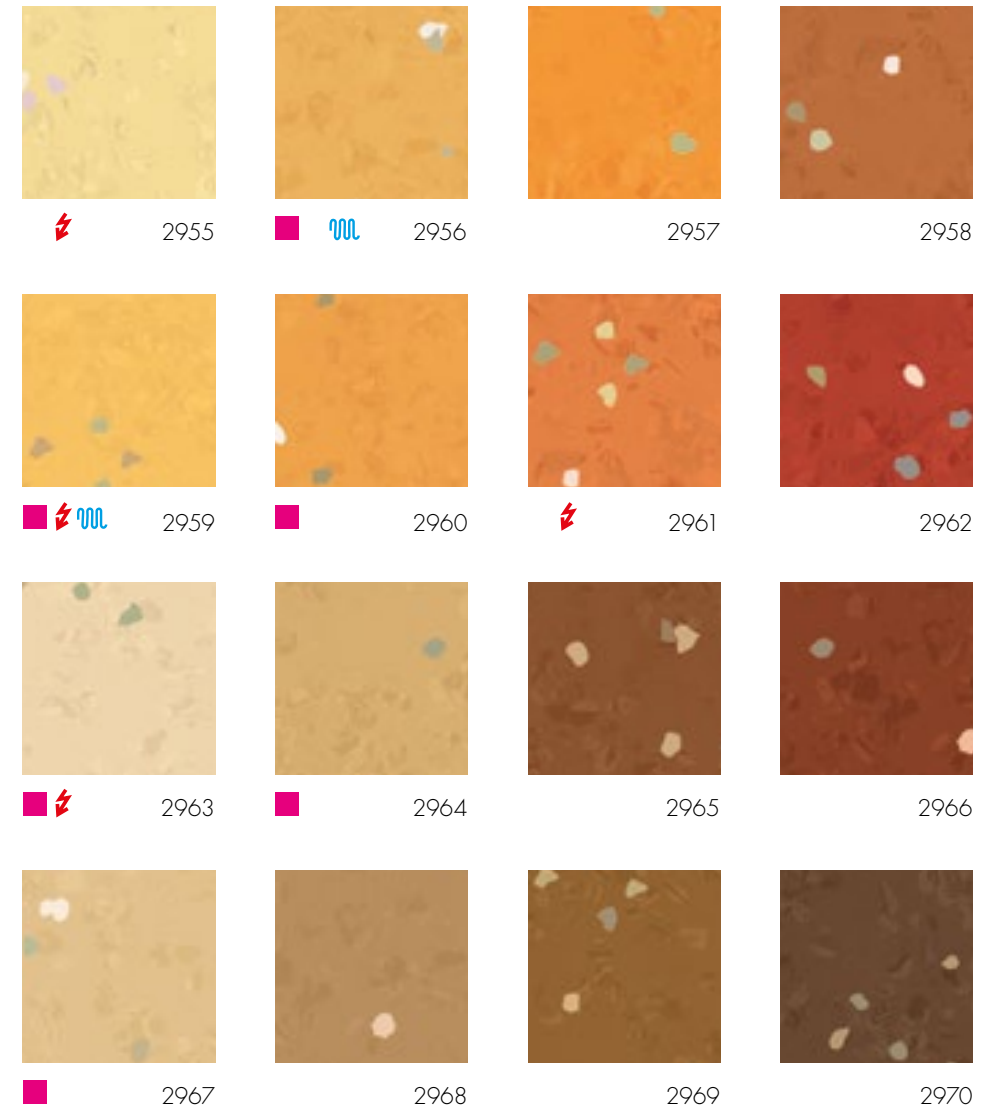
Art. 2463

~610 mm x 610 mm


10 □ = 3.72 m² in one carton


~3.0 mm


nora® profile connection dimension: D + U



These colours can also be delivered as:

 Special flooring noraplan® signa ed electrostatically dissipative, page 47

 Special flooring noraplan® signa acoustic footfall-sound-absorbing 20 dB, page 50

 Also available as noraplan® signa nTx, page 39

Note: More designs and information on nora® nTx can be found at www.nora.com or on request.



noraplan®



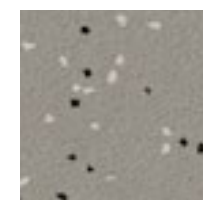
noraplan® stone

Discreet, non-directional scatter design available in both reflection-breaking and smooth surfaces for heavy traffic areas.

noraplan® stone · reflection-breaking surface



⚡ 6601



⚡ 1146



1862



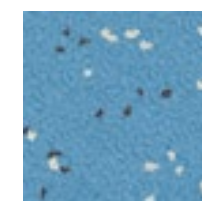
⚡ 2306



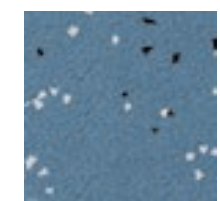
6602



⚡ 6603



1279



6604



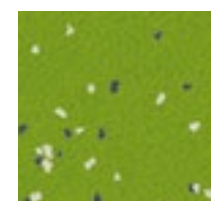
6605



6606



6607



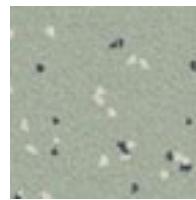
6608



6609



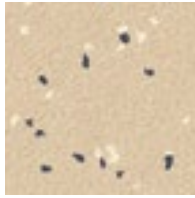
6610



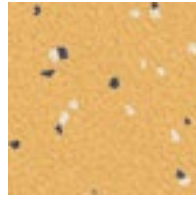
6611



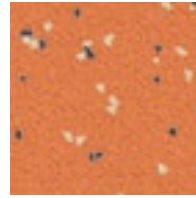
6612



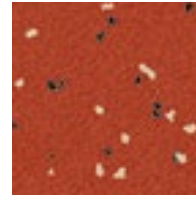
6613



6614



6615



6616

noraplan® stone · reflection-breaking surface



Art. 149

~1.22 m x 1.50 m

Art. 249

~610 mm x 610 mm

15 □ = 5.58 m² in one carton



nora® profile connection dimension: A + U

These colours can also be delivered as:



Special flooring noraplan® stone ed electrostatically dissipative, page 48



Special flooring noraplan® stone acoustic football-sound-absorbing 20 dB, page 51



Also available as noraplan® stone nTx, page 39

Note: More designs and information on nora® nTx can be found at www.nora.com or on request. Minimum quantities required.

noraplan® stone · smooth surface



6601



1146



1862



2306



6613



6614



6607



1279

noraplan® stone · smooth surface



Art. 1600

~1.22 m x 1.50 m

Art. 2600

~610 mm x 610 mm

15 □ = 5.58 m² in one carton



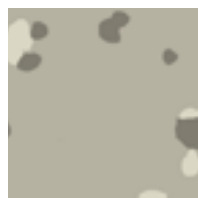
nora® profile connection dimension: A + U



Smooth tone-in-tone granular design in a smooth surface for heavy traffic areas.



6620



6621



6622



6623



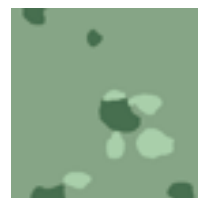
6624



6625



6626



6627



6628



6629



6630



6631



6632



6633



6634



6635

noraplan® eco

16

Art. 1490

~1.22 m x 15.0 m

Art. 2490

~610 mm x 610 mm

15 = 5.58 m² in one carton

~2.0 mm

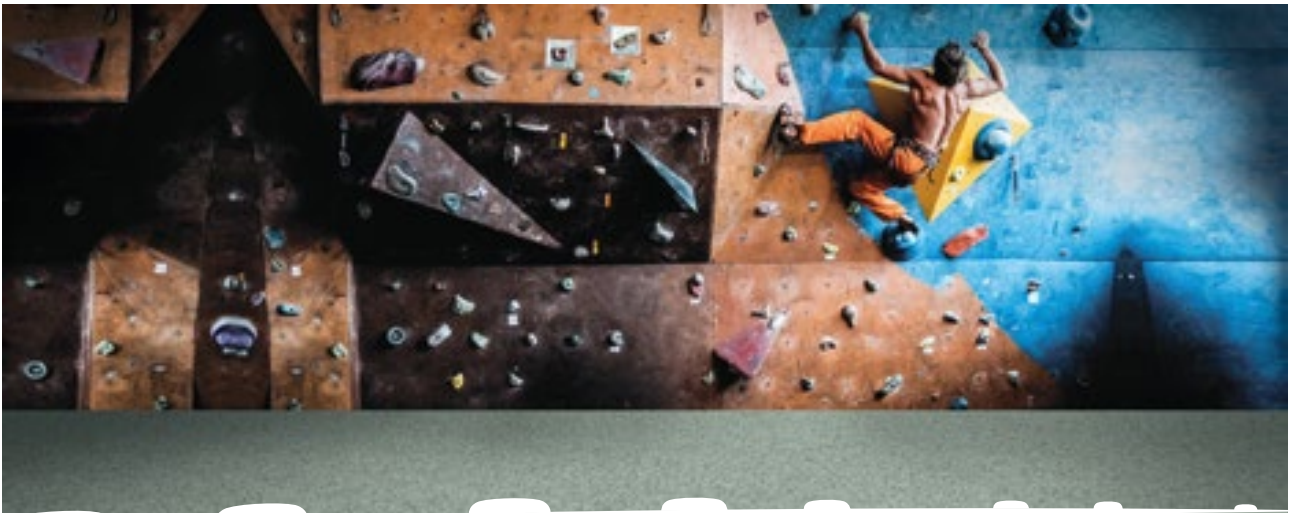
nora® profile connection dimension: A + U

Also available as noraplan® eco nTx, page 39

Note: More designs and information on nora® nTx can be found at www.nora.com or on request. Minimum quantities required.



Hele Educational Institution, Zhenjiang, China



noraplan® ultra grip

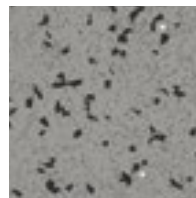
Safety floor covering with increased slip resistance, TRRL Pendulum Test 36+ in the wet and RZ value 20.1. Slip resistance R11 according to DIN 51 130 and BGR 181 or GUV-R 181, excellent environmental compatibility confirmed by BRE "A+" rating.



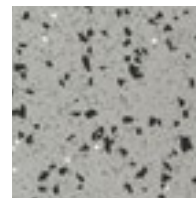
6014



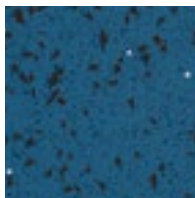
6015



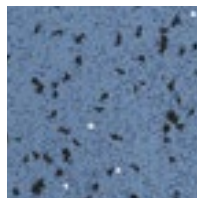
6016



6017



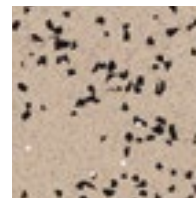
6018



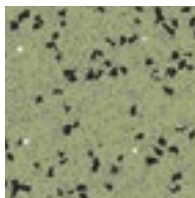
6019



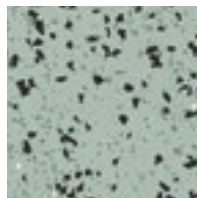
6020



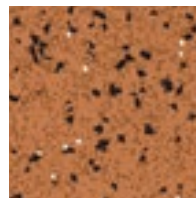
6021



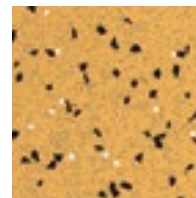
6023



6024



6027



6029

noraplan® ultra grip

Design with discretely dispersed granite chips

12

Art. 1569

~1.20 m x 1.5.0 m

~2.0 mm

nora® profile connection dimension: A + U

Resists most oils and greases

Also available as noraplan® ultra grip nTx, page 39

Note: More designs and information on nora® nTx can be found at www.nora.com or on request. Minimum quantities required.

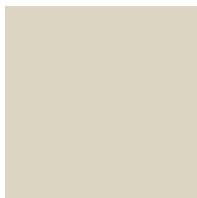


Kindergarten Fürth, Germany



noraplan® uni

One-coloured with a smooth surface for heavy traffic areas.



2446



6175



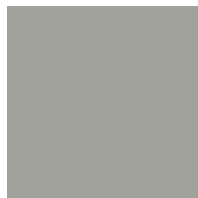
2140



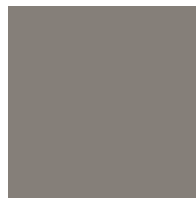
2647



2454



1810



2457



2451



6176



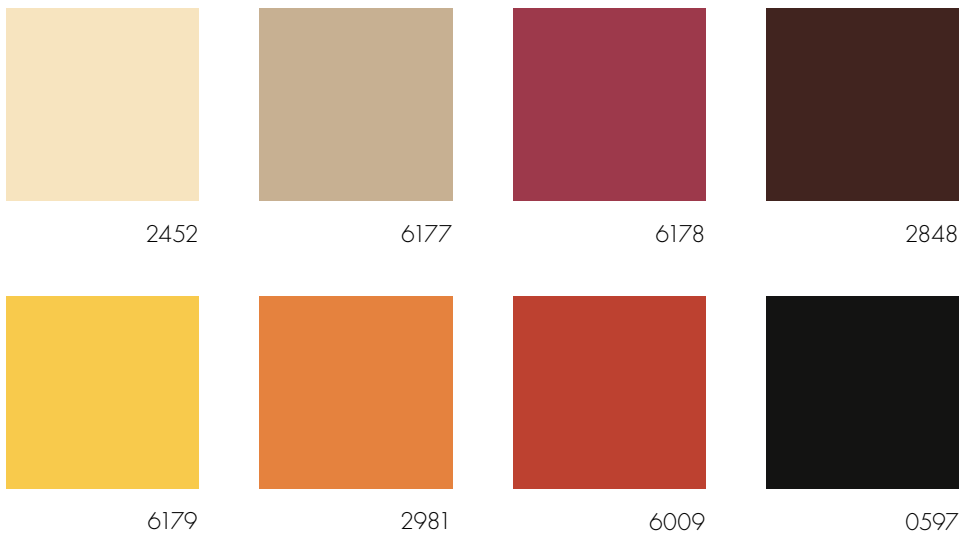
2144



0131



6129



noraplan® uni

20

Art. 1461

~1.22 m x 1.20 m

Art. 2461

~610 mm x 610 mm

15 = 5.58 m² in one carton

~2.0 mm

nora® profile connection dimension: A + U

Also available as noraplan® uni nTx, page 39

Note: More designs and information on nora® nTx can be found at www.nora.com or on request. Minimum quantities required.



Cinemaxx, Bielefeld, Germany



noraplan® unita

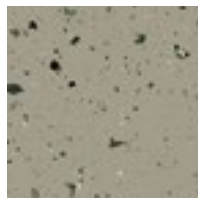
A perfect combination of materials, comprising permanently resilient rubber and randomly dispersed granite chips with a smooth surface for heavy traffic areas. Available in two timeless designs.



reddot design award
winner 2012



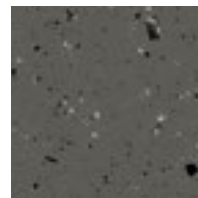
6442



6443



6444



6445



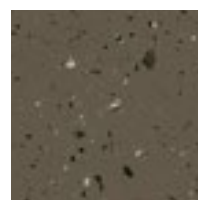
6446



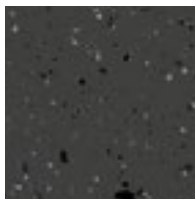
6447



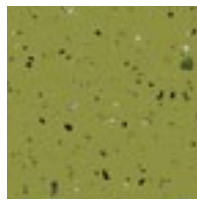
6448



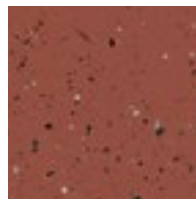
6449



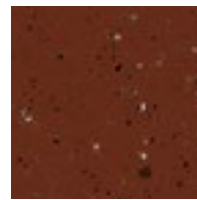
6450



6451



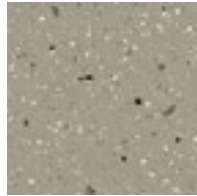
6452



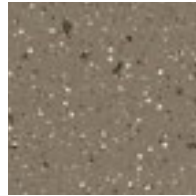
6453



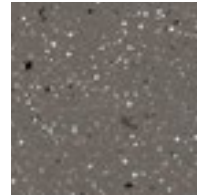
6454*



6455*



6456*



6457*

noraplan® unita

Design with discretely dispersed granite chips



Art. 1640

~1.22 m x 15.0 m



nora® profile connection dimension: A + U

Please note: Granite is a natural product. For this reason, slight colour deviations may occur in the stone even within the same batch.

noraplan® unita

Design with glimmering dispersed granite



Art. 1650*

~1.22 m x 15.0 m



nora® profile connection dimension: A + U

* Art. 1650 is only available in colours: 6454, 6455, 6456 and 6457.



Also available as noraplan® unita nTx, page 39

Note: More designs and information on nora® nTx can be found at www.nora.com or on request. Minimum quantities required.



Technical University, Braunschweig, Germany



noraplan® **valua**

Imagine a floor covering that brings the beauty and comfort of the natural world indoors. A room that exudes the intuitive warmth, light and calm so hard to find in today's busy world. Envision a perfect moment tailored just to you. Perhaps it's a glimpse of blue sky out of your window. Or the glow of your living room, illuminated by morning light. Maybe it's the hush of the ocean nearby. Imagine a flooring that makes you feel at home.

noraplan® valua · A variant of flowing vibrancy



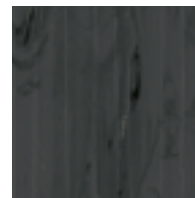
6708



6709



6710



6711



6712



6713



6714



6715



Rolls



Art. 174A

~1.22 m x 15.0 m



nora® profile connection dimension: A + U



Art. 175A

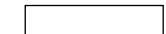
~1.22 m x 12.0 m



nora® profile connection dimension: D + U

Three plank sizes. Unlimited possibilities

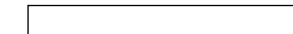
Planks



610 mm x 205 mm

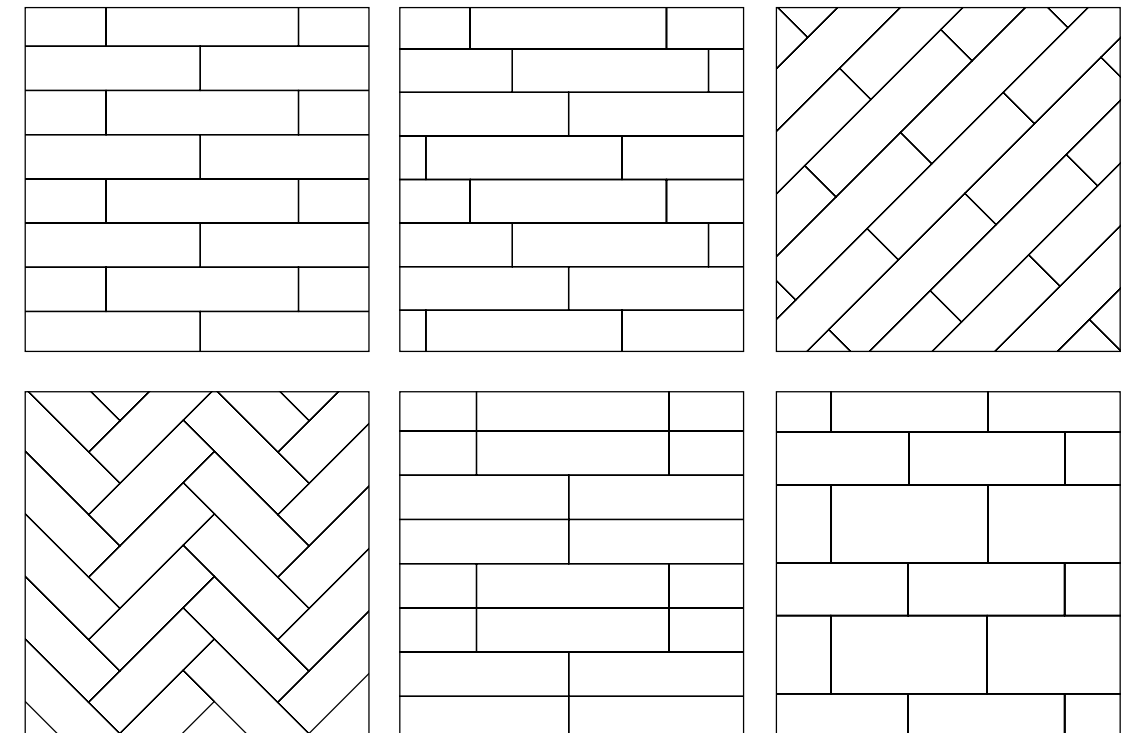


610 mm x 305 mm



1220 mm x 405 mm

Example installations



Planks



Art. 272A

~610 mm x 205 mm

36 □ = 4.50 m² in one carton

Art. 273A

~610 mm x 305 mm

24 □ = 4.46 m² in one carton

Art. 274A

~1.220 mm x 405 mm

12 □ = 5.92 m² in one carton



nora® profile connection dimension: A + U



Art. 275A

~610 mm x 205 mm

24 □ = 3.00 m² in one carton

Art. 276A

~610 mm x 305 mm

16 □ = 2.97 m² in one carton

Art. 277A

~1.220 mm x 405 mm

8 □ = 3.95 m² in one carton



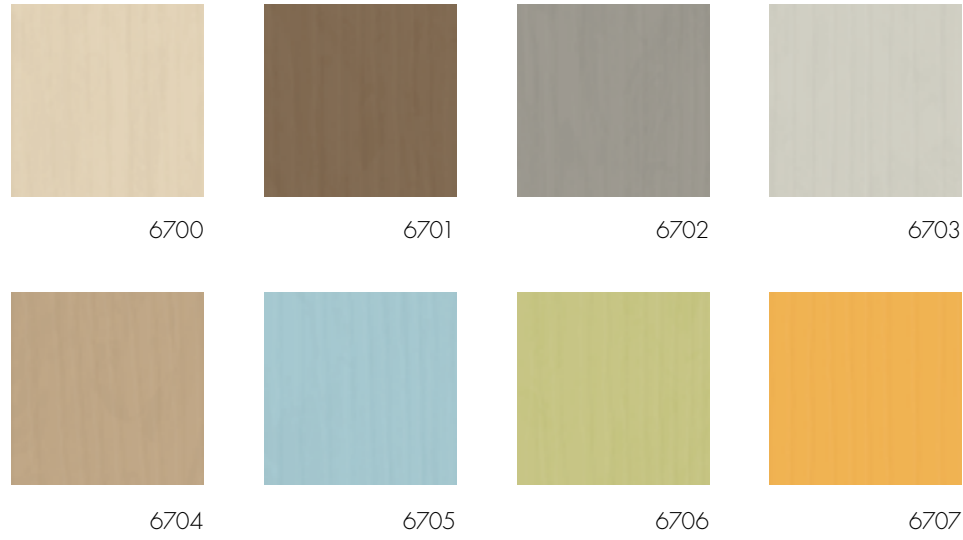
nora® profile connection dimension: D + U

Also available as noraplan® valua nTx, page 39

Note: More designs and information on nora® nTx can be found at www.nora.com or on request. Minimum quantities required.



noraplan® valua · A restful variant of virtually plain colour



Rolls

Art. 172A
~1.22 m x 15.0 m



nora® profile connection dimension: A + U

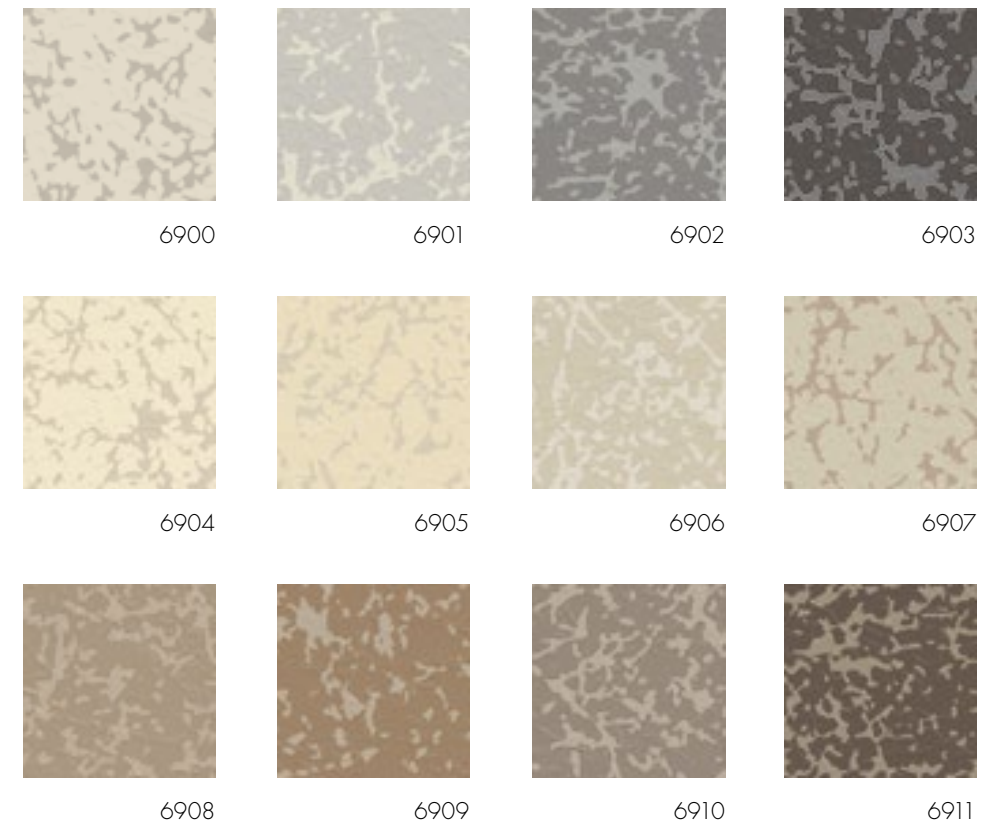
Art. 173A
~1.22 m x 12.0 m



nora® profile connection dimension: D + U



Rubber floor covering with a contrasting accent color in an elegant design. Matte de lux, slightly structured surface with visual depth.

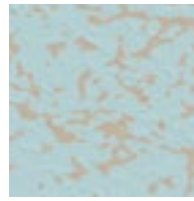




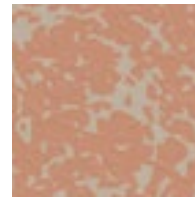
6912



6913



6914



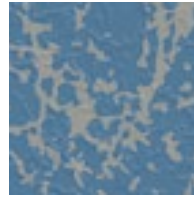
6915



6916



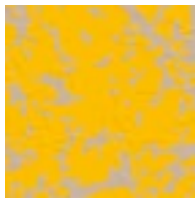
6917



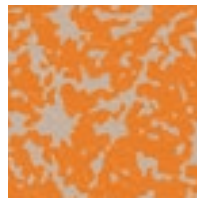
6918



6919



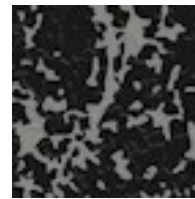
6920



6921



6922



6923

noraplan® lona

• 24

Art. 166B

~1.22 m x 15.0 m

Art. 266B

~610 mm x 610 mm

~2.0 mm

nora® profile connection dimension: A + U

Also available as noraplan® lona nTx, page 39

Note: More designs and information on nora® nTx can be found at www.nora.com or on request. Minimum quantities required.



Kindergarten Schönmatte, Germany

nora® nTx

The new generation flooring system

nora® nTx is a new and unique technology for professional installers to lay nora® rubber flooring systems.

Because the powerful adhesive is factory-fitted, nora® nTx is as simple as it is ingenious. In a few simple steps, the flooring can be cleanly and safely installed and used immediately. It can be laid on all common concrete or cement screed surfaces, as well as directly on top of existing floorings. Even high levels of residual moisture in the screed are no problem for nora® nTx.



The challenges of conventional laying processes – such as applying the correct amount of adhesive or ensuring sufficient wetting, drying and waiting time before and after laying – are all a thing of the past. The installation couldn't be easier: trim, remove protective film, roll on – done. And the result is just as durable, sturdy and safe as you would expect from nora® floor coverings.

nora also offers a comprehensive range of installation materials and tools to ensure clean and safe substrate preparation. („nora® accessories“, page 67)

FAST



Fast installation

With nora® nTx you can lay flooring quickly and easily in a few simple steps – with no waiting time.

EFFICIENT



Efficient application

nora® nTx flooring can be laid directly on existing surfaces – even with high levels of residual moisture – and can be used immediately.

ECONOMICAL



Economic safety

Laying nora® nTx flooring reduces downtime, saves costs and minimises the risk of errors.



Available designs with noraplan® nTx

noraplan® signa nTx



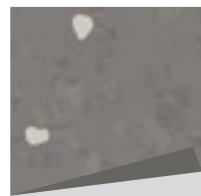
2945



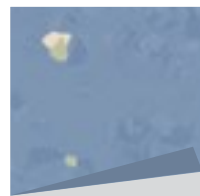
2944



2780



2931



2937

noraplan® signa nTx

Art. 156A

~1.22 m x 14.8 m

~2.1 mm

noraplan® sentica nTx



6505



6506



6520



6522



6517

noraplan® sentica nTx

Art. 1633

~1.22 m x 14.8 m

~2.1 mm

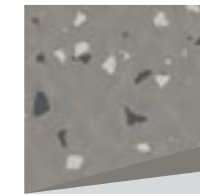
Please note: Further details on nora® nTx can be obtained at www.nora.com or on request.

Available designs with norament® nTx

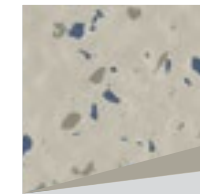
norament® 926 grano nTx



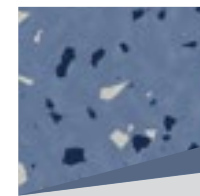
4880



4882



4879



4878



4870



4884

norament® 926 grano nTx

Art. 3111

~1004 mm x 1004 mm

~3.6 mm

norament® 926 satura nTx



5106



5102

norament® 926 satura nTx

Art. 3111

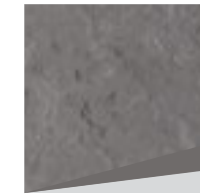
~1004 mm x 1004 mm

~3.6 mm

norament® 926 arago nTx



5172



5177

norament® 926 arago nTx

Art. 3122

~1004 mm x 502 mm

~3.6 mm

Special floorings

We have developed our special floorings for areas subject to special technical standards and requirements. These include e.g. acoustic coverings with an impact sound improvement index of 20 dB, electrostatically dissipative or conductive qualities, or highly specialised solutions for ice rinks, golf facilities, and many more. Get to know the range of designs and variants on the following pages.

nora® nTx

What is nora® nTx made of?

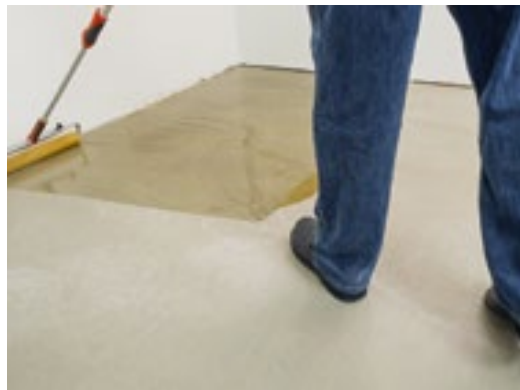
- nora® nTx consists of our norament® and noraplan® standard floor coverings fitted with an adhesive backing
- This adhesive backing is lined with a protective film
- Like our floor coverings, this adhesive is also based on natural rubber and is free from health hazards

Installing nora® nTx floorings



Grinding

The subsurface must be ground down. The best tools are the nora® nTx sanding discs and their sanding tools. The result is a level, sealed subsurface. Depending on the consistency, we recommend filling uneven patches or the whole surface.



Bonding agent

Afterwards, apply the bonding agent nora® nTx 020. In doing so, avoid puddling without fail.



Laying tiles/sheets

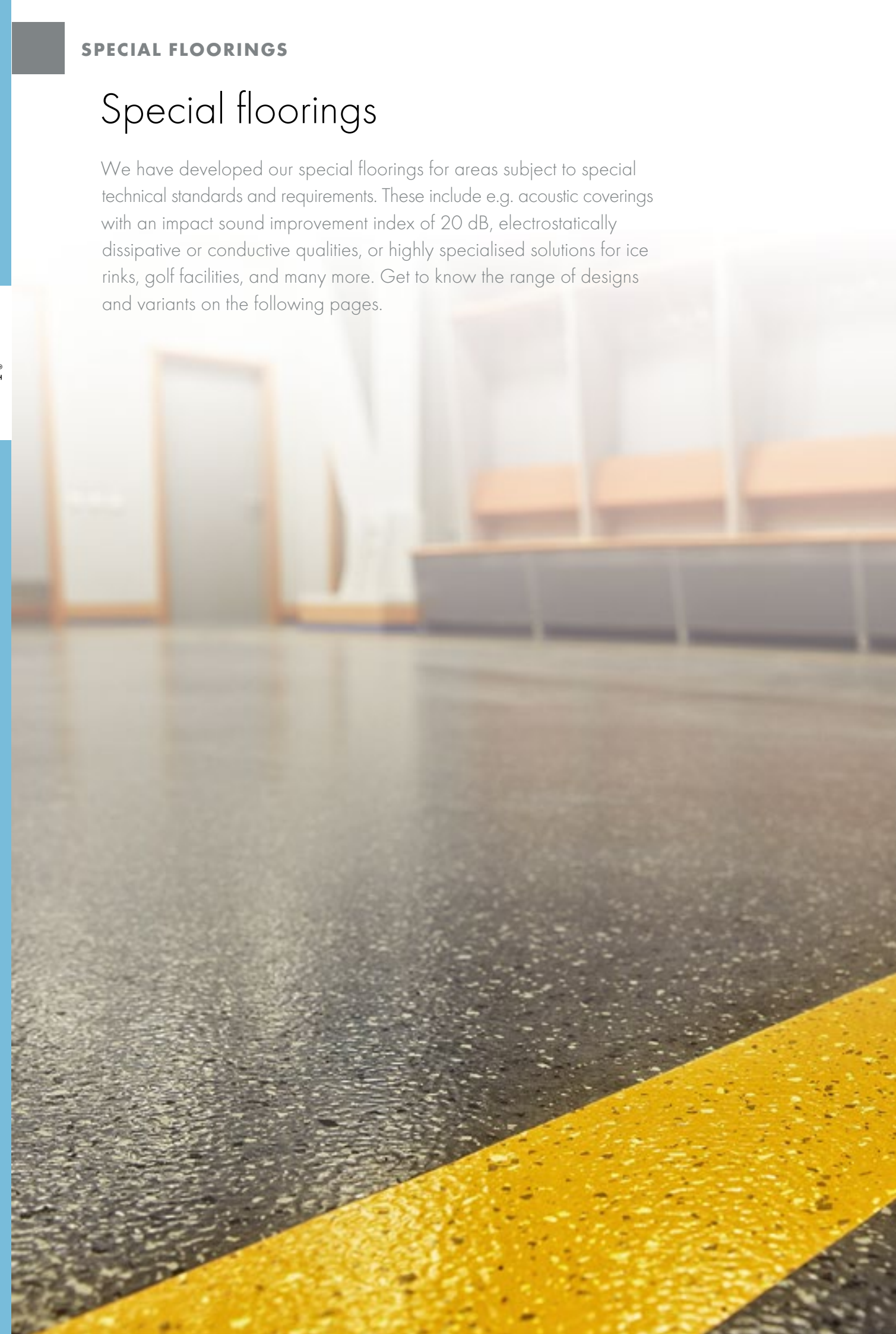
Next, the tiles/sheets are laid properly. After individual adjustments, the protective film is removed and the flooring installed.



Finally

Finally, the flooring is rubbed and rolled on. Dwell times are no longer necessary. The floor covering can be used immediately afterwards.

Please note: For further details, please consult the noraplan® nTx and norament® nTx installation instructions.





SanoCare, Alsbach-Hähnlein, Germany



Clariant innovation Center CIC, Frankfurt, Germany



Lu'an Power Plant, China



Albrecht Jung GmbH & Co. KG, Lünen, Germany

norament® 992/992 grano

For areas with extreme requirements (e.g. ice rinks, golf clubs, animal stables, etc.).

norament® 992

Round pastille



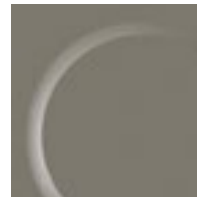
0702



0319



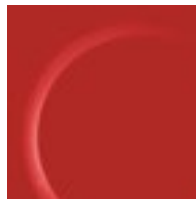
2079



0882



6172



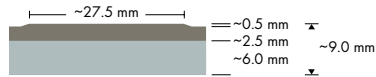
0866

norament® 992



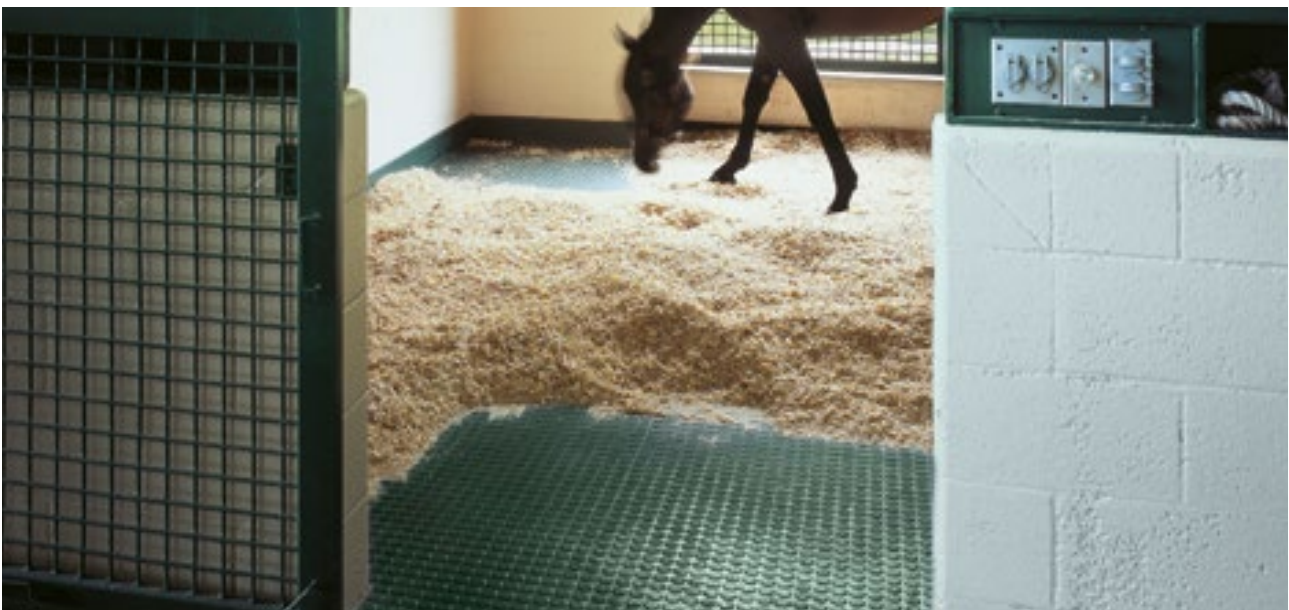
Art. 992/1956

□ ~1002 mm x 1002 mm

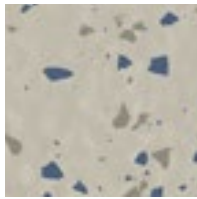


nora® profile connection dimension: N

Please note price group black/coloured



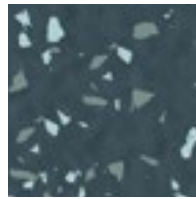
norament® 992 grano
Hammerblow surface



4879



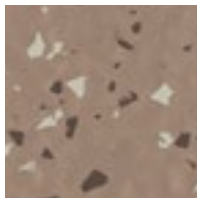
4882



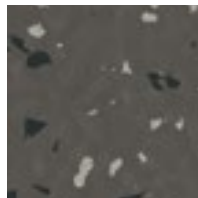
4872



4876



4897



4880

norament® 992 grano



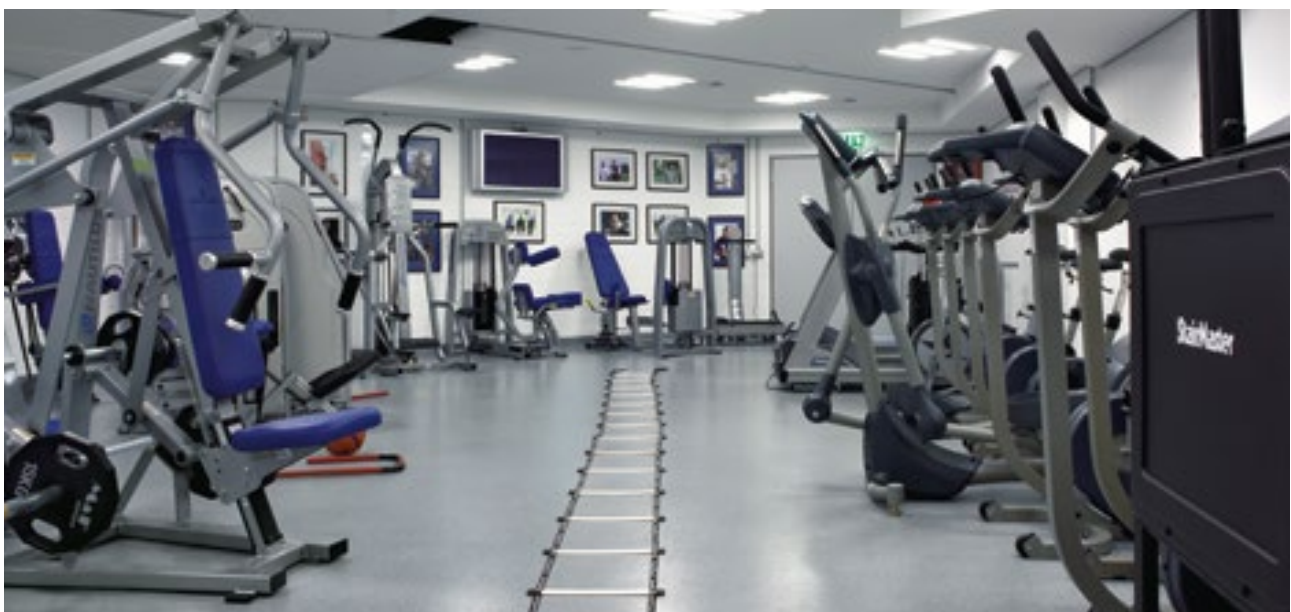
Art. 992 grano/1955

□ ~1002 mm x 1002 mm



nora® profile connection dimension: N

Note: Variant with a hammer blow surface is not suitable for use at ice rinks as puddles may form, for example from melted ice water.



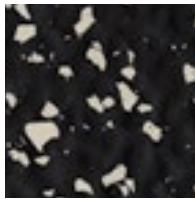
SAP-Arena, Mannheim, Germany

norament[®] and noraplan[®] ec ⚡



Electrostatically conductive "ec" floorings for optimum ESD protection of electronic devices and equipment. Suitable for areas with a risk of explosions and fork-lift-truck areas (norament[®] 927 grano ec). Largely resistant to acids and alkalis (norament[®] 927 grano ec).

norament[®] 927 grano ec



4617

norament[®] 927 grano ec



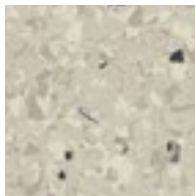
Art. 927 grano ec/1880

□ ~1004 mm x 1004 mm

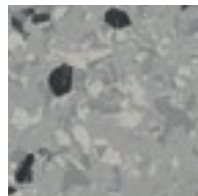


nora[®] profile connection dimension: E + U

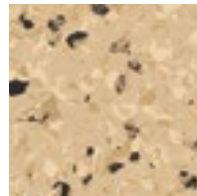
noraplan[®] astro ec



6102



6007



6114



6056

noraplan[®] astro ec



Art. 1466

□ ~1.22 m x 12.0 m

Art. 2466

□ ~610 mm x 610 mm

15 □ = 5.58 m² in one carton



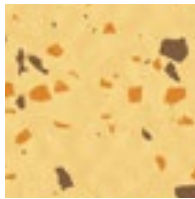
nora[®] profile connection dimension: A + U

norament[®] ed

Electrostatically dissipative “ed” floorings for optimum ESD protection of electronic devices and equipment. Protect against electrical shock, resist most oils and greases and are suitable for forklift truck areas.



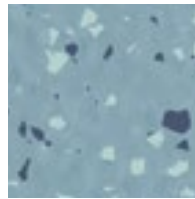
norament[®] 928 grano ed



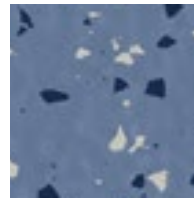
4884



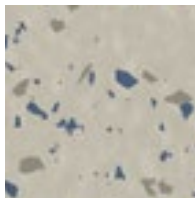
4871



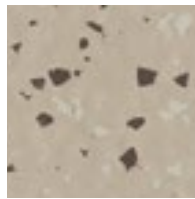
4874



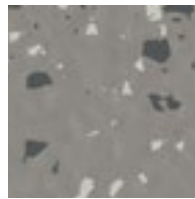
4878



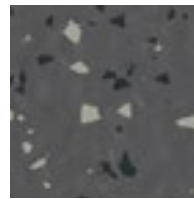
4879



4896



4882



4881

norament[®] 928 grano ed



Art. 928 grano ed/1880

□ ~1002 mm x 1002 mm



nora[®] profile connection dimension: E + U

norament[®] 928 grano ed



Art. 928 grano ed/1911

□ ~610 mm x 610 mm



noraplan® ed ⚡

Electrostatically dissipative “ed” floorings for optimum ESD protection of electronic devices and equipment. Protect against electrical shock, resist most oils and greases.



noraplan® sentica ed



6508



6509



6513



6512



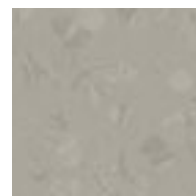
6516



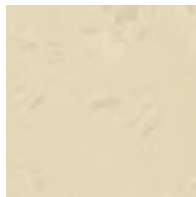
6517



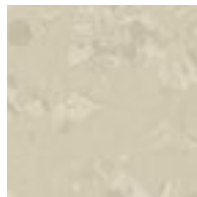
6521



6520



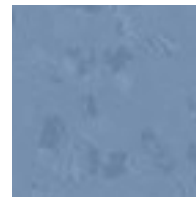
6504



6505



6530



6529

noraplan® sentica ed

●●● 12

Art. 1702

⌚ ~1.22 m x 15.0 m

Art. 2702

□ ~610 mm x 610 mm

15 □ = 5.58 m² in one carton

▬ ~2.0 mm

nora® profile connection dimension: A + U

noraplan® sentica ed

●●● 12

Art. 1703

⌚ ~1.22 m x 12.0 m

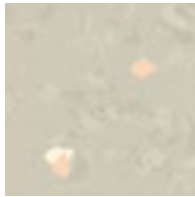
▬ ~3.0 mm

nora® profile connection dimension: D + U

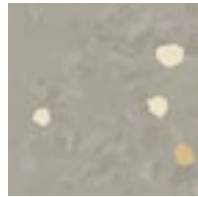
Please note: The colours 6504, 6505 and 6508 are only recommended for areas with a low incidence of stains and dirt (e.g. **not** for OP theatres or intensively frequented areas).

Please note: noraplan® ed floorings must be treated with the nora® joint-sealing compound.

noraplan® signa ed



2780



2930



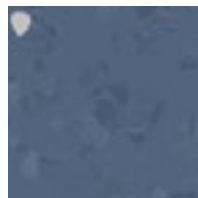
2931



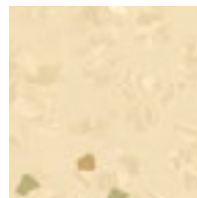
2936



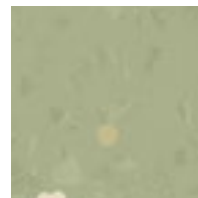
2937



2939



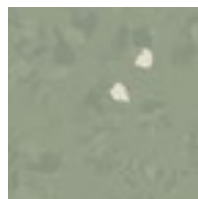
2944



2949



2950



2953



2955



2959



2961



2963

noraplan® signa ed



Art. 1390

~1.22 m x 15.0 m

Art. 2390

~610 mm x 610 mm

15 □ = 5.58 m² in one carton



nora® profile connection dimension: A + U

noraplan® signa ed



Art. 1523

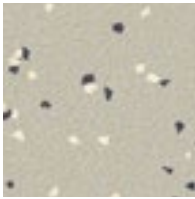
~1.22 m x 12.0 m



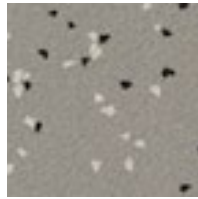
nora® profile connection dimension: D + U

Please note: noraplan® ed floorings must be treated with the nora® joint-sealing compound.

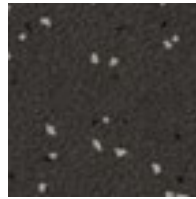
noraplan® stone ed · reflection-breaking surface



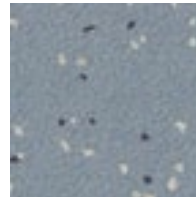
6601



1146



2306



6603

noraplan® stone ed · reflection-breaking surface



Art. 129

~1.22 m x 15.0 m

Art. 229

~610 mm x 610 mm

15 □ = 5.58 m² in one carton



nora® profile connection dimension: A + U

Please note: noraplan® ed floorings must be treated with the nora® joint-sealing compound.



Hospital Siloah, Hannover, Germany

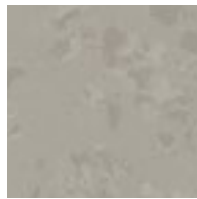
noraplan[®] acoustic

For high footfall sound absorption with a footfall sound absorption improvement of 20 dB.

noraplan[®] sentica acoustic



6505



6520



6521



6522



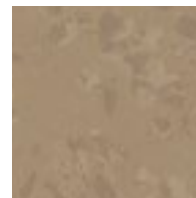
6508



6536



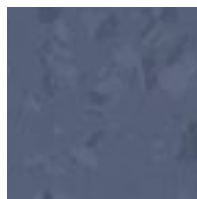
6513



6510



6530



6531



6516



6517

noraplan[®] sentica acoustic

 12

Art. 1705

 ~1.22 m x 12.0 m

 ~1.6 mm ~4.0 mm

nora[®] profile connection dimension: E + U

Please note: noraplan[®] acoustic floorings must be sealed with nora[®] hot welding rod.

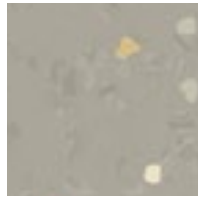
noraplan[®] acoustic

For high footfall sound absorption with a footfall sound absorption improvement of 20 dB.

noraplan[®] signa acoustic



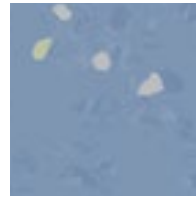
2780



2930



2936



2937



2944



2949



2956



2959

noraplan[®] signa acoustic



Art. 1420

~1.22 m x 1.20 m



nora[®] profile connection dimension: E + U

Please note: noraplan[®] acoustic floorings must be sealed with nora[®] hot welding rod.



Kindergarten Völklingen, Germany

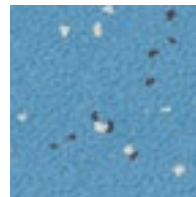
noraplan® stone acoustic · reflection-breaking surface



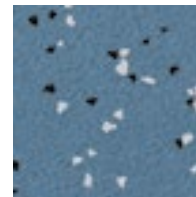
1146



1862



6604



1279



6605



6610



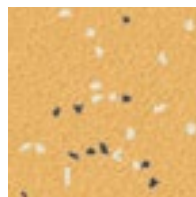
6607



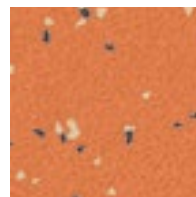
6608



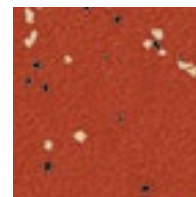
6613



6614



6615



6616

noraplan® stone acoustic · reflection-breaking surface

12

Art. 148

~1.22 m x 12.0 m



nora® profile connection dimension: E + U

Please note: noraplan® acoustic floorings must be sealed with nora® hot welding rod.

Vibrant architecture inlays

Create inlays based on our templates or design compositions of your own imagination. At our inlay centre we can process your images, drawings or image files to create your own design. Our state-of-the-art ultrasound cutting machine cuts almost any motif into 100% matching pieces that can be laid without sealing the joints. To guarantee easy installation, we supply inlays up to a size of 1.2 x 1.6 metres, fully assembled and ready for laying. For large-sized inlays, we provide the floor layer with detailed laying plans.



Dr. Erika Fuchs Haus, Germany

There are no limits to individuality at nora®



noraplan® signa



norament® satura



norament® 926 grano



noraplan® sentica



norament® grano



noraplan® sentica

norament® stairtreads

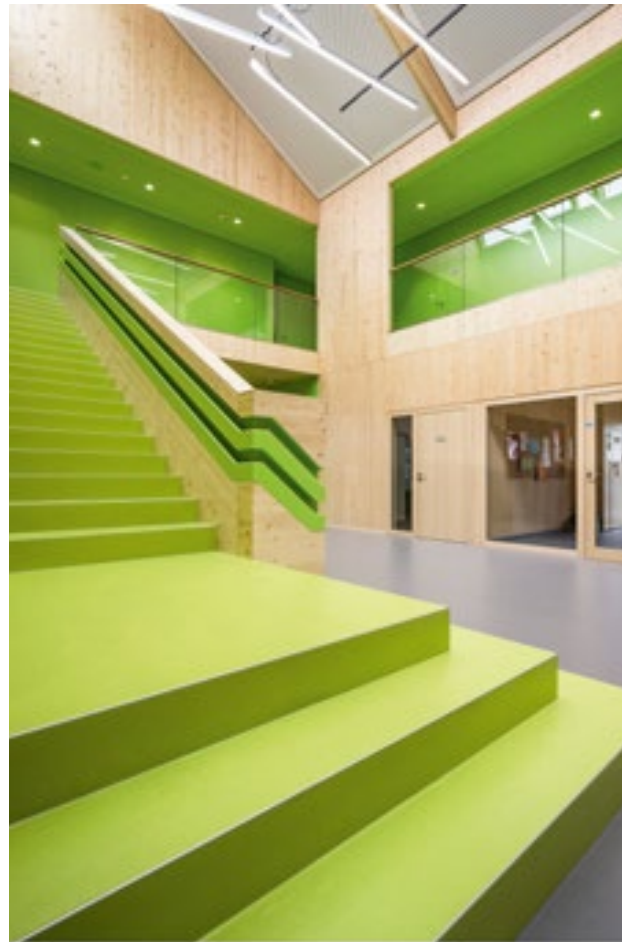
Individual requirements for stairwells are best fulfilled from our extensive system programme, from the tailored norament® stairtread with integrated preformed stair nosing, riser, and tread to individual combinations of stair angles, stair nosings, and integrated safety stripes.

Our system range is rounded off with colour-matched skirting solutions, joint-sealing compounds, hot welding rods, and installation materials.





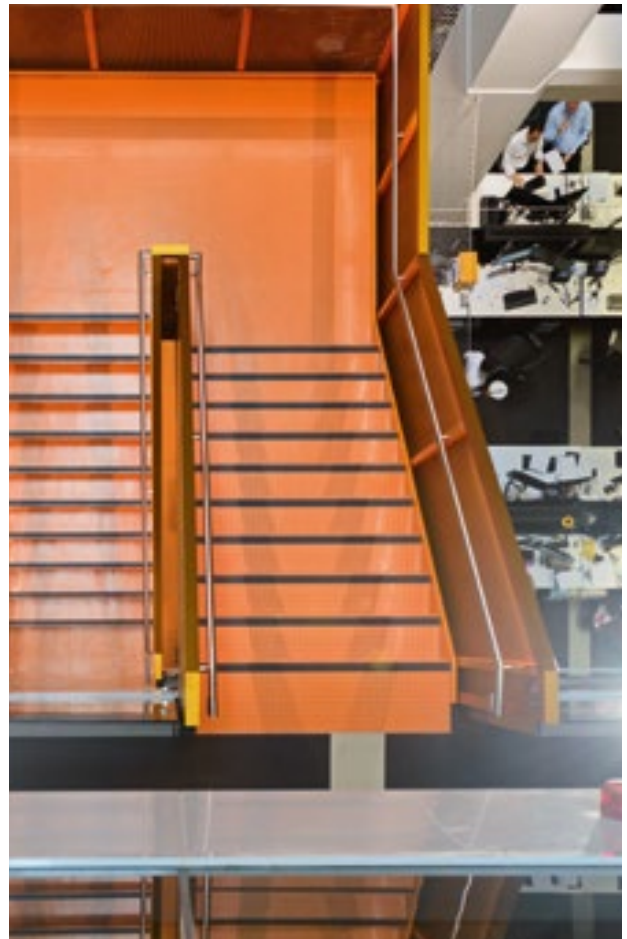
Macquarie Bank, London, England



Kindergarten Völklingen, Germany



Kulturforum Hanau, Germany



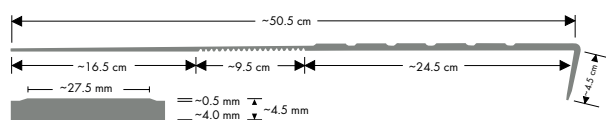
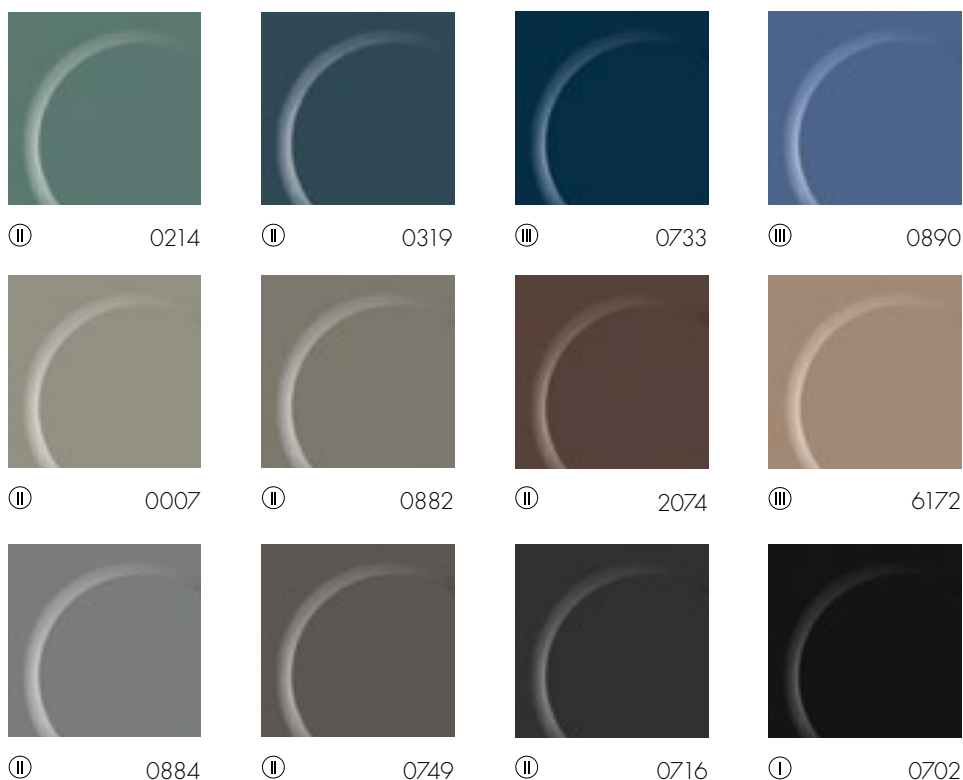
Macquarie Bank, Sydney, Australia

norament® stairtreads

Pre-shaped stair coverings consisting of stair nosing, riser and tread all in one piece for straight steps with right-angled edge. For extremely heavy traffic stairwell areas.

Stairtread norament® 926

One-coloured with classic round pastille, footfall sound absorption improvement of 12 dB



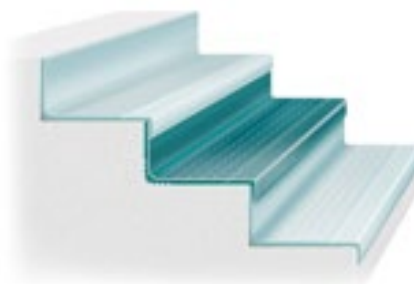
Stairtread norament® 926

12

Art. 926/465 - width 1,285 mm

Art. 926/466 - width 1,614 mm

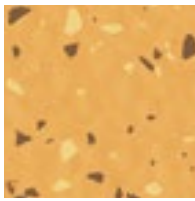
Art. 926/467 - width 2,004 mm



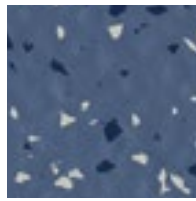
○ = Price category

Stairtread norament® 926 grano

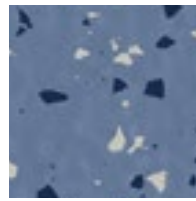
Granular design rich in contrast with a hammerblow surface, footfall sound absorption improvement of 12 dB



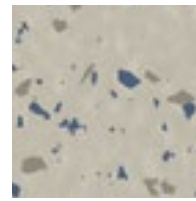
4885



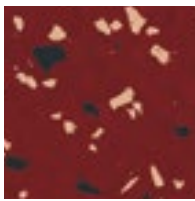
4877



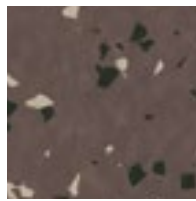
4878



4879



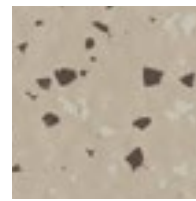
4890



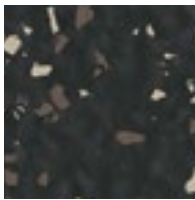
4898



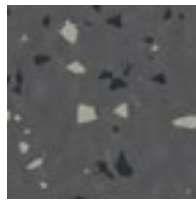
4897



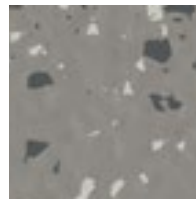
4896



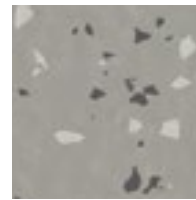
4899



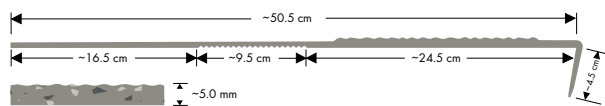
4881



4882



4883



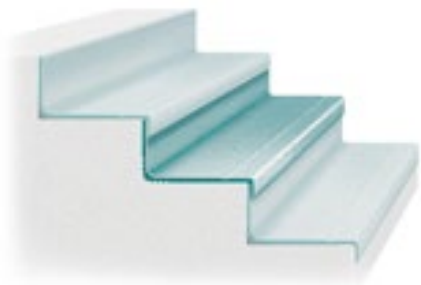
Stairtread norament® 926 grano

12

Art. 926 grano/479 - width 1,285 mm

Art. 926 grano/468 - width 1,614 mm

Art. 926 grano/469 - width 2,004 mm



Stairtread norament® 926 satura

Tone-in-tone granular design with a hammerblow surface, footfall sound absorption improvement of 12 dB



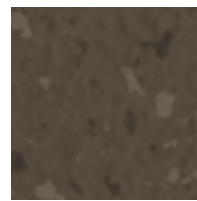
5102



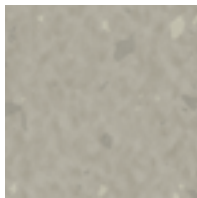
5103



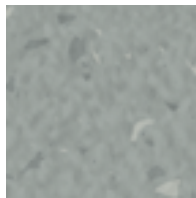
5107



5108



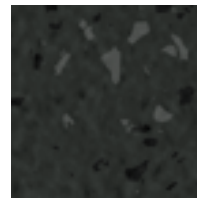
5110



5114



5115



5116



5118



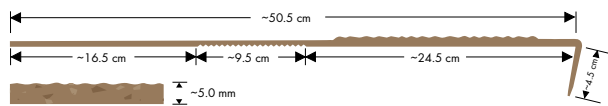
5121



5127



5129



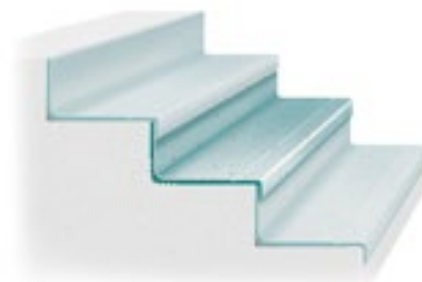
Stairtread norament® 926 satura

12

Art. 926 satura/479 - width 1,285 mm

Art. 926 satura/468 - width 1,614 mm

Art. 926 satura/469 - width 2,004 mm



norament® stairtreads with signal or safety stripes

norament® stairtreads can be equipped with the following signal or safety stripes:



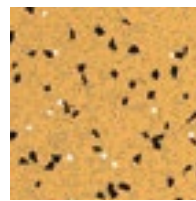
0122



0895



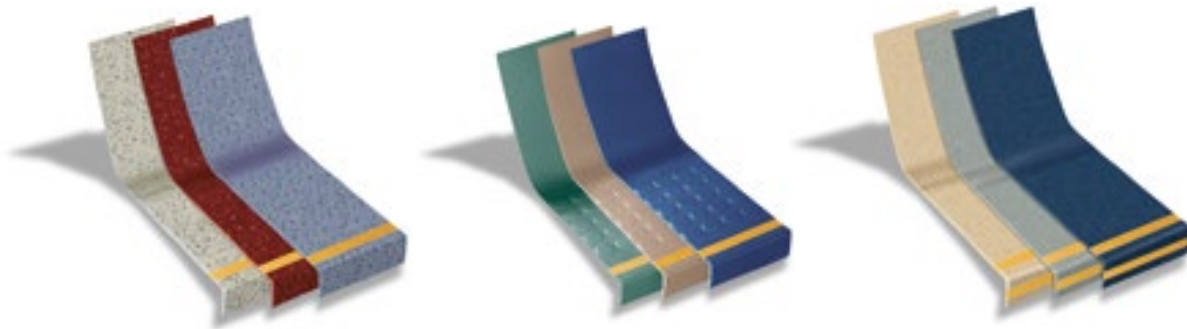
6014



6029

- Signal stripes yellow, phosphorescent according to DIN 67 510, in a width of 2 cm, integrated into the tread area of the stair nosing
- Signal stripes uni, in a width of 2 or 3 cm in the colours 0122, light grey, and 0895, signal yellow, integrated into the tread area and alternatively also in the vertical part of the stair nosing
- Safety stripes ultra grip for increased slip resistance, in a width of 2 or 3 cm in the colours 6029, yellow, and 6014, grey, integrated into the tread area and alternatively also in the vertical part of the stair nosing

Signal and safety stripes in other widths and colours are available on request.



nora[®] accessories for stairwell areas

Accessory range made of rubber matched to suit norament[®] and noraplan[®] floor coverings. Can also be used in combination with other types of floorings. nora[®] profiles are impact and shock-resistant, do not shrink, do not contain any plasticizers and retain their functional reliability long term.

nora[®] stair nosings

With plug-in lip for quick and easy installation on all types of staircases.

1 T 5049 **2 T 5044**

 8

Minimum order quantity: 5 r.m.

Standard length: 2.5 r.m.

Delivery in 5 fixed lengths possible: 1.00/1.25/1.65/2.0/2.50 r.m.

3 TA 1203

Aluminium stair nosing for stairs made of norament[®] coverings

Delivery unit: 2.7 r.m.

nora[®] stair angles

For the smooth finishing of right-angled stairs to the wall and banister side.

4 TW 7005 U **5 TW 7006 U** **6 TG 7003 U** **7 TG 7004 U**

 34

Delivery unit: pieces

nora[®] skirting and stringer profile

8 S 1008 U

 34

Multi-purpose skirting

Delivery unit: rolls of 10 r.m.

Connection profile for nora[®] stair angles "TW"

9 A 5013 U

 34

For landings and ramps

Delivery unit: in units of 2.5 r.m.

Connection profile for nora[®] stair angles "TG"

nora[®] stair margin

10

 2

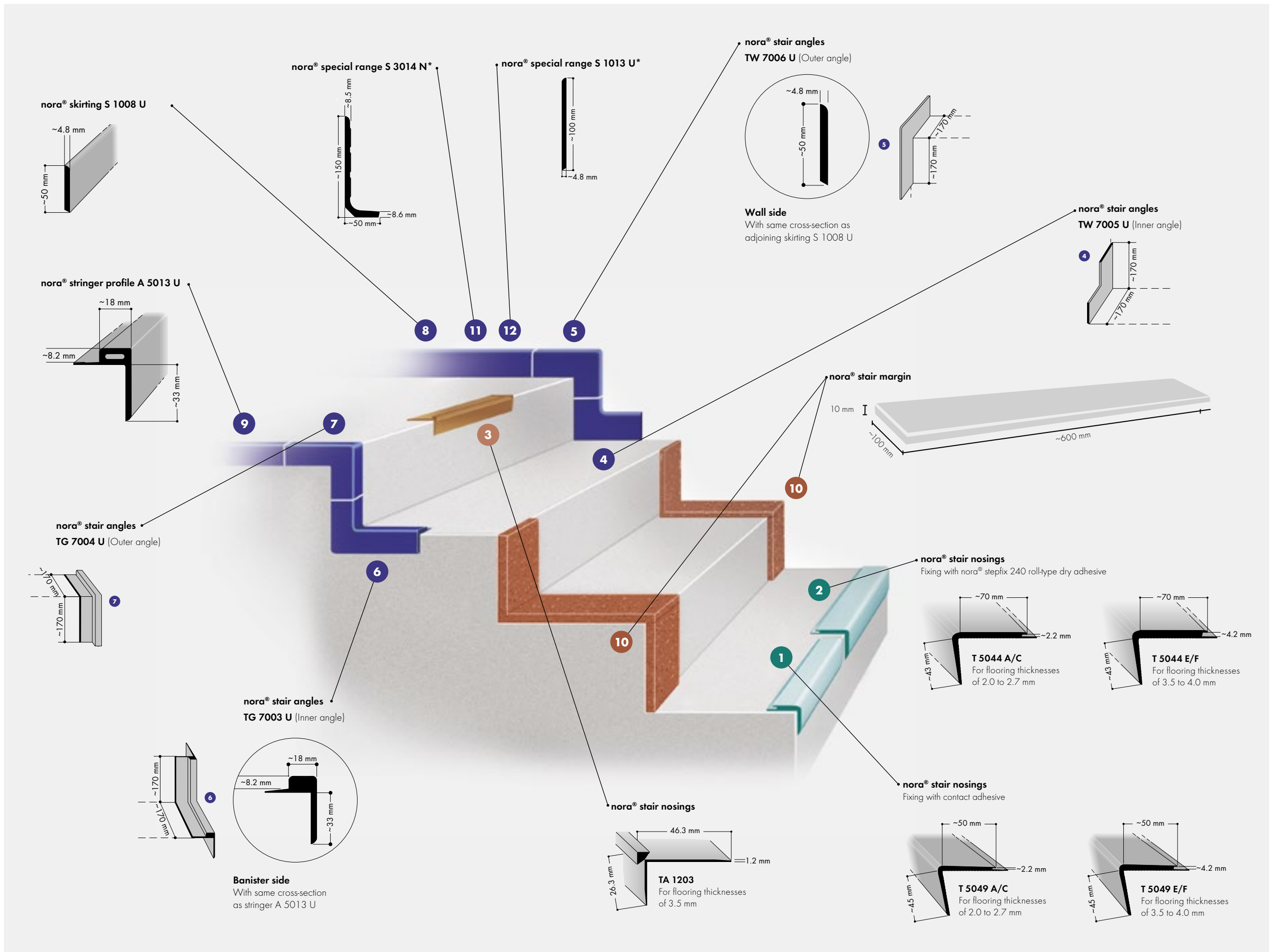
For wall and banister side. Hammerblow surface with granular design.

Art. 819

~600 mm x 100 mm

Thickness 10 mm

Supplied as: pieces



nora[®] stepfix 240

Special roll-type dry adhesive

For quick installation of norament[®] stairtreads, stairwell installations with nora[®] stair nosing T 5044 and nora[®] stair margin.

The cost and eco-conscious adhesive innovation. Suitable for new buildings and renovation
Advantages: 3-5 times as quick, odourless, can be walked on immediately, economic, eco-compatible, and reliable thanks to excellent bonding performance.

Art. 907

nora[®] special range for stairwell areas

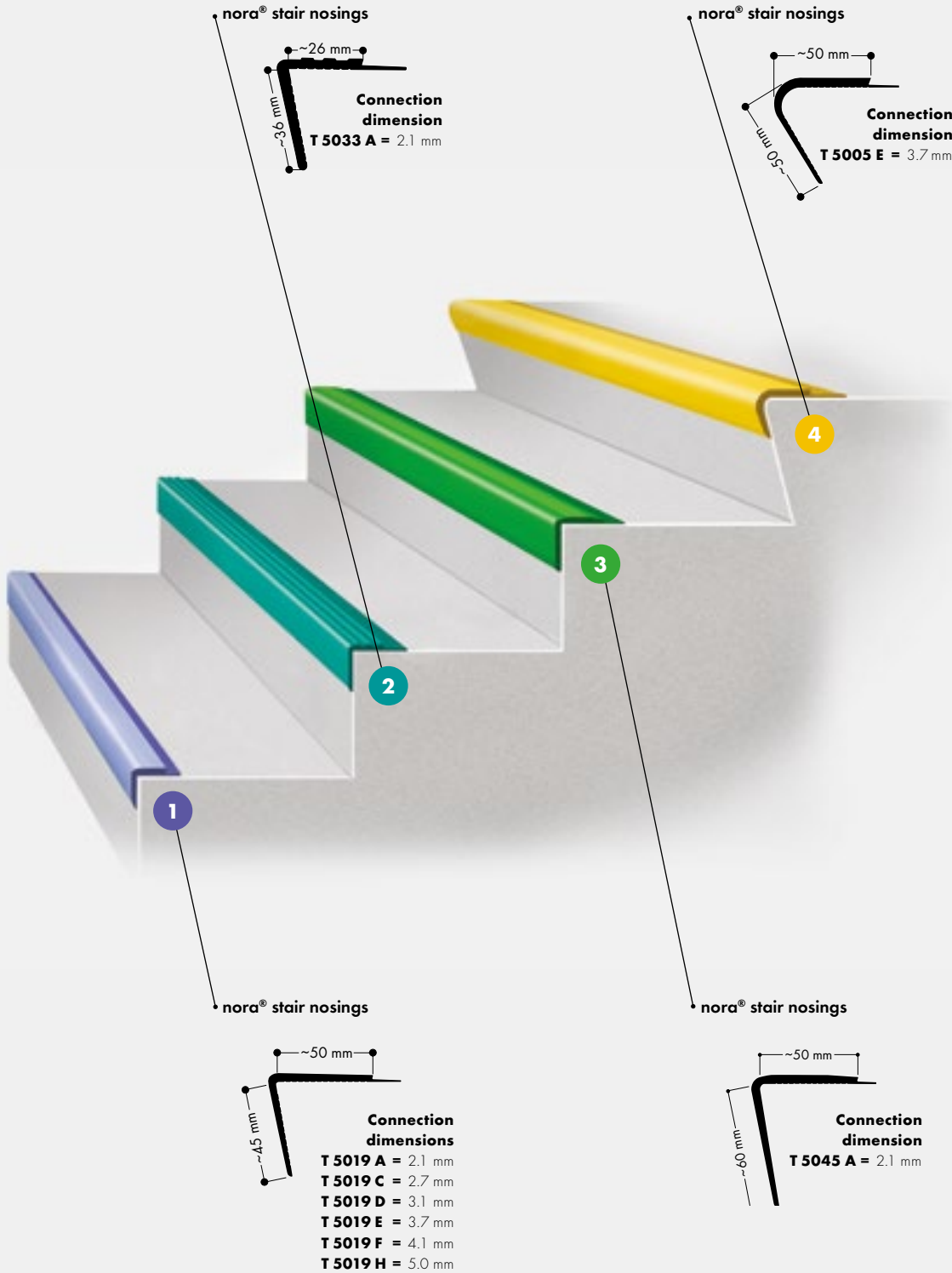
The special range offers profiles with different cross-sections for further applications. The profiles shown here are examples only. Further individual designs are available on request. Delivery units and minimum order quantities on request.

nora[®] stair nosings

T 5019/T 5033/T 5045/T 5005



nora[®] special range



nora[®] accessories

Accessory range made of rubber matched to suit nora[®] floor coverings for convincing solutions both in visual and functional terms. The materials are impact- and shock-resistant, do not contain any plasticizers and retain their functional reliability long term.

nora[®] skirting and skirting angles

Easy to clean, suitable for areas with stringent hygienic requirements.

1 SA 7002 Skirting outer angle

-  22*
SA 7002 A
-  22*
SA 7002 D
-  7*
SA 7002 E

Suitable for Skirting S 3003

Art. 508

Delivery unit: as pieces

Connection dimensions:




A = 2.1 mm

D = 3.1 mm

E = 3.7 mm

*Further colours on request

2 S 3003 Skirting

-  22*
S 3003 A
-  22*
S 3003 D
-  7*
S 3003 E

Matching with skirting angles SI 7001 and SA 7002.

Art. 726

Delivery unit: in rolls of 10 r.m.

Connection dimensions:

A = 2.1 mm

D = 3.1 mm

E = 3.7 mm

*Further colours on request

3 SI 7001 Skirting inner angle

-  22*
SI 7001 A
-  22*
SI 7001 D
-  7*
SI 7001 E

Suitable for Skirting S 3003

Art. 507

Delivery unit: as pieces

Connection dimensions:

A = 2.1 mm

D = 3.1 mm

E = 3.7 mm

*Further colours on request

nora[®] skirtings

4 S 1024 U Height 100 mm

-  65*
S 1024 U

For areas with stringent requirements in terms of appearance. The permanently resilient sealing lip of S 1024 U reliably accommodates pastille heights of up to 1 mm. Also suitable as wall stringer with raised-access floors.

Art. 713

Delivery unit: in rolls of 10 r.m.

*Further colours on request

5 S 1023 U Height 60 mm

-  109*
S 1023 U

For areas with stringent requirements in terms of appearance. The permanently resilient sealing lip of S 1023 U reliably accommodates pastille heights of up to 1 mm. Also suitable as wall stringer with raised-access floors.

Art. 712

Delivery unit: in rolls of 10 r.m.

*Further colours on request

6 S 1008 U Height 50 mm

-  34*
S 1008 U

Multi-purpose skirting
Adjoining skirting for nora[®] stair angles "TW"

Art. 705

Delivery unit: in rolls of 10 r.m.

*Further colours on request

S 3003 Skirting inner angle

SA 7002 A/S 3003 A/SI 7001 A
SA 7002 D/S 3003 D/SI 7001 D

0882	2635	2931	2944	2950	2963	4877	6508	6512	6516	6529
2398	2930	2937	2949	2953	2964	6504	6509	6513	6517	6530

SI 7001 Skirting inner angle

SA 7002 E/S 3003 E/SI 7001 E

1146	1150	1780	4871	4874	4881	4884
------	------	------	------	------	------	------

Joint sealing compound

0007	1585	2786	2949	2969	5102/2786	5118	6442	6506	6522/2226	6601/1254
0131	2078	2787	2950	2970/4654	5103	5119	6443	6507	6523	6603/2940
0702	2099/2940	2930	2951	4654	5104	5120	6444	6508	6524	6613/1385
0716	2102/2947	2931	2953	4871	5105	5121	6446	6509	6525	6615/2961
0733	2106/2752	2933	2954	4873	5106	5122	6448	6510	6526/2666	6915
0749	2306/0716	2934	2955	4874	5107	5123/6513	6449	6511	6527	6917
0866	2380/2932	2936	2957	4877	5108	5124	6451	6512	6528	6920
0882	2398/2959	2937	2958/2147	4878/1780	5109	5125	6452	6513	6529	6921
0884	2635/2961	2938	2959	4879/1254	5110	5126	6453/6385	6514	6530	6922
1146/1253	2636/2960	2939/4877	2962	4881	5111	5127	6457	6515	6531/4877	
1150/1254	2666	2941	2963/2633	4882/1253	5112	5128	6500	6516	6532	
1279	2779	2942/2142	2964	4884	5113	5129	6501	6517	6533/2962	
1385	2780	2944	2965	4885/2956	5114	5130/6535	6502	6518	6534	
1578	2781	2945/2897	2966	4896/2680	5115	5131	6503	6519	6535	
1581	2784	2946	2967	4897/2681	5116	5132	6504	6520	6536	
1582	2785	2948	2968	5101	5117	6178/6502	6505	6521/0882	6537	

nora[®] hot welding rod for noraplan[®]Can be delivered in all colours to match the noraplan[®] floor covering colours.

Because noraplan[®] floor coverings do not contain any plasticizers, there is no shrinkage after installation. This is why the floorings do not have to be sealed. Only noraplan[®] acoustic floorings have to be sealed with the nora[®] hot welding rod. For the other floorings, we recommend sealing the joints when the flooring has been installed on a moisture-sensitive subfloor, in rooms with continual and intensive wet cleaning, in areas with stringent hygiene requirements or for special requirements (e.g. in laboratories).

In operating theatres or on other small noraplan[®] surfaces the vertical joints of the skirtings are sealed with nora[®] joint sealing compound

Art. 946

Round, Ø 4 mm, rolls of 100 r.m.

nora[®] joint sealing compound

Since norament[®] and noraplan[®] floor coverings do not contain any plasticizers, there is no shrinkage after installation. This is why, with the exception of electrostatically dissipative norament[®] ed floorings, the floorings does not need to be sealed. It is, however, advisable to seal the joints in case of moisture-sensitive subfloors, in rooms permanently undergoing intensive wet cleaning or in areas with special hygienic requirements. For these special requirements, the sealing of all norament[®] and noraplan[®] floorings is suitable.

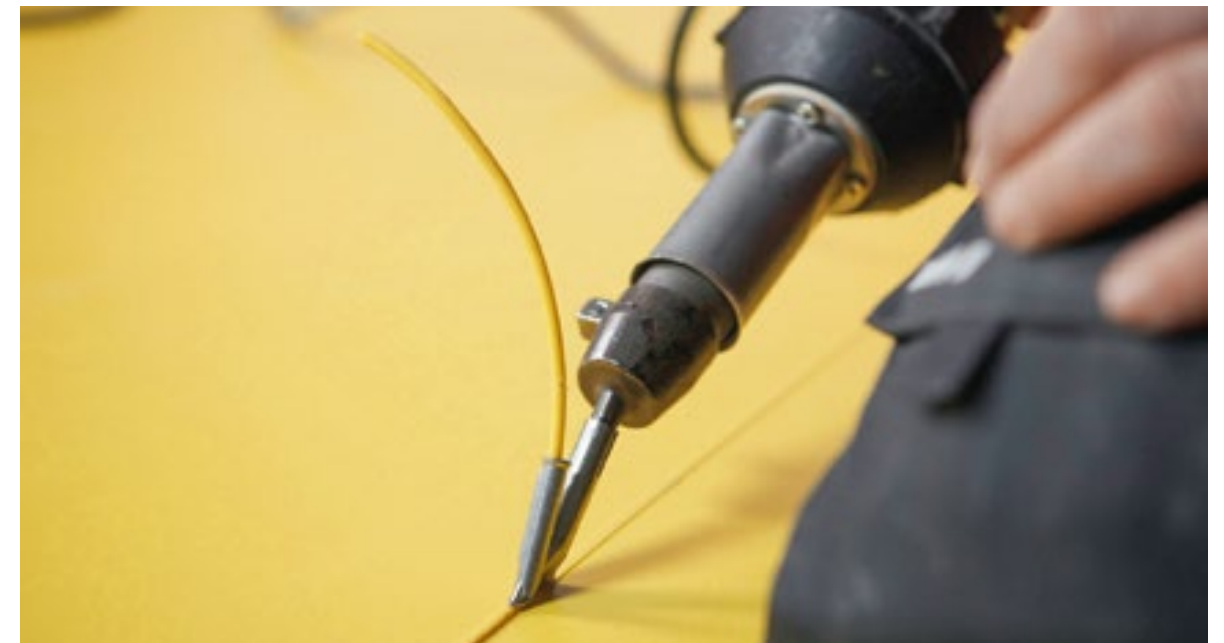
Art. 928

170

300 ml cartridge

1 disposable cartridge, sufficient for 15-18 r.m.

Please note: Joint cutter (art. no. 116950) and nora[®] liquid wax (art. no. 109914) may be ordered from our company.



nora[®] nTx installation materials

nora[®] nTx installation materials have been developed specifically for the nora[®] nTx floor coverings. The perfect matching between each installation material and the nora[®] nTx floor coverings provides functional reliability and ensures the highest standards of quality. Moreover, all nora[®] nTx installation materials can be applied to subsurfaces with higher residual moisture levels.

nora[®] nTx 020

1C primer

Art. 6684

Primer for improved adhesion

nora[®] nTx tools

nora[®] nTx sanding disc incl nTx K3

Sanding disc for preparing substrates

Art. 6685

Suitable sanding discs for the machines: Mambo, Columbus, and Orkan. Already fitted with sanding tool nTx K3.
NOTE Please specify the machine type in your order

nora[®] nTx K3

Sanding tool (fine)

Art. 6686

Sanding tool for nTx sanding disc

nora[®] nTx K2

Sanding tool (coarse)

Art. 6687

Sanding tool for nTx sanding disc



Sanding discs



Sanding tools

nora system blue®

This matching, sustainability based, and certified overall concept combines nora® rubber floor coverings with select installation materials, both low emission. The system construction is subjected to the most stringent emission tests, and both selected nora® floor coverings and nora system blue® installation materials have been awarded the “Blue Angel” eco-label (RAL-UZ 120 and 113).

Your benefits:

- nora system blue® is the only floor covering system in the world whose overall concept has been certified. The emissions-free constituents safeguard a healthy indoor climate
- Reliable functionality assured by the symbiosis of the individual constituents
- Seamless supervision and documentation of the installation work by the application engineers from nora®
- Seven year product warranty when system components are laid by a qualified installer
- Competent consultation for preparing the call for tenders

Our nora pads® complete this end-to-end system range with an environmentally friendly and sustainable cleaning and care solution. Learn more on page 70.

The system design



1 primer 2 filler 3 adhesive 4 floor covering



Further details can be found in our nora system blue® brochure and at www.nora.com

nora system blue[®] installation materials

The perfect coordination of the individual system components provides functional reliability and ensures the highest standards of quality.

nora[®] hybrid 310

Fiber-reinforced hybrid adhesive

Art. 6610

For bonding norament[®] floorings on non-absorbent and absorbent subfloors

nora[®] fiber 410

Fiber-reinforced acrylic adhesive

Art. 6611

For bonding nora[®] rubber floor coverings

nora[®] fiber ESD 414

Fiber-reinforced, conductive acrylic adhesive

Art. 6612

For bonding "ed" (dissipative) and "ec" (conductive) nora[®] rubber floor coverings

nora[®] level compound

Fast spreading filler

Art. 6613

For filling and levelling subfloors

nora[®] level compound FA

Fiber-reinforced filler

Art. 6625

For filling and levelling subfloors

nora[®] level compound SF

Stable filler

Art. 6626

For filling holes and patch-repairing transitions

nora[®] primer

Acrylic special primer

Art. 6614

Primer for cement screed, mastic asphalt and calcium sulphate screed and as a bonding course between layers of filler

nora[®] 2-K primer

Fast-drying acrylic special primer

Art. 6615

Primer for cement screed, mastic asphalt and old encrusted and water-resistant adhesive residues

nora[®] epoxy ground

Two-component epoxy resin primer

Art. 6616

Universal primer (e.g. for concrete and cement screed).

nora[®] pads

nora[®] pads are suitable for daily cleaning and intensive cleaning on extremely soiled nora[®] rubber floor coverings. Cleaning and polishing are mechanical processes – just with water and absolutely no chemicals at all. nora[®] pads can be used with most standard types of machine and are available in different sizes.



Art. 6688

nora[®] pad 0 – 10"		Ø 254 mm	delivery unit: 4 pieces in one carton
nora[®] pad 0 – 13"	nora[®] Pad 0	Ø 330 mm	delivery unit: 4 pieces in one carton
nora[®] pad 0 – 14"	for the cleaning with machines for structured noraplan [®] floor coverings and noraplan [®] uni, noraplan [®] unita as well as noraplan [®] ultra grip:	Ø 356 mm	delivery unit: 4 pieces in one carton
nora[®] pad 0 – 16"		Ø 406 mm	delivery unit: 4 pieces in one carton
nora[®] pad 0 – 17"		Ø 431 mm	delivery unit: 1 or 4 pieces in one carton
nora[®] pad 0 – 20"	For polishing cleaned floor coverings with a high speed machine for structured noraplan [®] floor coverings and noraplan [®] uni, noraplan [®] unita, and noraplan [®] ultra grip:	Ø 508 mm	delivery unit: 1 or 4 pieces in one carton

Art. 6627

nora[®] pad 1 – 10"		Ø 254 mm	delivery unit: 4 pieces in one carton
nora[®] pad 1 – 13"	nora[®] Pad 1	Ø 330 mm	delivery unit: 4 pieces in one carton
nora[®] pad 1 – 14"	for polishing cleaned floor coverings with a high speed machine for structured noraplan [®] floor coverings and noraplan [®] uni, noraplan [®] unita, and noraplan [®] ultra grip:	Ø 356 mm	delivery unit: 4 pieces in one carton
nora[®] pad 1 – 16"		Ø 406 mm	delivery unit: 4 pieces in one carton
nora[®] pad 1 – 17"		Ø 431 mm	delivery unit: 1 or 4 pieces in one carton
nora[®] pad 1 – 20"	For polishing cleaned floor coverings with a high speed machine for smooth noraplan [®] floor coverings and norament [®] floor coverings with hammerblow or cubic structure:	Ø 508 mm	delivery unit: 1 or 4 pieces in one carton

Art. 6628

nora[®] pad 2 – 17"	nora[®] Pad 2 for intermediate and intensive cleaning with a single disk machine for smooth noraplan [®] floor coverings and norament [®] floor coverings with hammerblow or cubic structure:	Ø 431 mm	delivery unit: 1 or 4 pieces in one carton
-------------------------------------	--	----------	--

Art. 6629

nora[®] pad 3 – 17"	nora[®] Pad 3 for intensive cleaning of heavily soiled and scratched floor coverings with a single disk machine for smooth noraplan [®] floor coverings and norament [®] floor coverings with hammerblow or cubic structure:	Ø 431 mm	delivery unit: 1 piece in one carton
-------------------------------------	---	----------	--------------------------------------

nora[®] dry adhesives

nora[®] dryfix · Dry adhesive supplied in rolls

For the permanent fixing of norament[®] and noraplan[®] floor coverings. The time-saving, cost- and eco-conscious adhesive innovation. Suitable for new buildings and renovations. Advantages: 5 times as quick, can be walked on immediately, odourless, economic, eco-compatible and reliable.

Art. 6556

nora[®] profix · Dry adhesive tapes

nora[®] profix 50

For quick installation of skirting S 1023 U.

Art. 992

nora[®] profix 90

For quick installation of skirtings S 1024 U, S 3003 as well as for pedestal formation through wall nosings (cushioned-edge profile).

Art. 993

nora[®] stepfix 240 · Dry adhesive supplied in rolls

For quick installation of norament[®] stairtreads, stairwell installations with nora[®] stair nosing T 5044 and nora[®] stair margin.

Art. 907

nora[®] special range

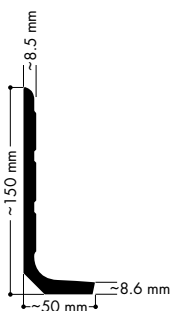
The special range offers profiles with different cross-sections for further applications.

Delivery units and minimum order quantities on request.

The profiles shown here are examples only. Further individual designs are available on request.

11 nora[®] skirting S 3014 N

Special skirting for norament[®] 992 and norament[®] 992 grano



12 nora[®] skirting S 1013 U

Skirting 10 cm high, also suitable for the use on other floor coverings

Delivery unit: in rolls of 10 r.m.



	Test method	Requirements	Average test results from running production			
			926	926 grano 926 satira 926 arago	825	992 992 grano
CE conformity	EN 14 041		← Manufacturer: nora systems GmbH, D-69469 Weinheim →			
DoP-No.	EN 14 041		0021		0004	0023
Dynamic coefficient of friction	EN 13 893	DS	← Fulfilled →			
Reaction to fire	EN 13 501-1	Not bonded	C _f s1		C _f s1	C _f s2
Reaction to fire	EN 13 501-1	Bonded on mineral subfloor	B _f s1		B _f s1	C _f s1

Properties acc. to EN 1817/EN 12 199

Thickness	EN ISO 24 346	Mean value ± 0.20 mm according to EN 12 199	4 mm		3.2 mm	9 mm (Art. 1956)
		Mean value ± 0.15 mm according to EN 1817		3.5 mm		9 mm (Art. 1955)
Dimensional stability	EN ISO 23 999	± 0.4 %	← ± 0.3 % →			
Tear strength	ISO 34-1, method B, procedure A	Mean value ≥ 20 N/mm	35 N/mm	35 N/mm	30 N/mm	40 N/mm
Cigarette-burn resistance	EN 1399	Procedure A (stuffed out) ≥ level 4 Procedure B (burning) ≥ level 3	← Fulfilled →			
Flexibility	EN ISO 24 344, procedure A	Mandrel diameter 20 mm, no fissuring	← Fulfilled →			
Hardness	ISO 7619	≥ 70 Shore A (EN 12 199) ≥ 75 Shore A (EN 1817)	82 Shore A	82 Shore A	87 Shore A	70 Shore A
Residual indentation	EN ISO 24 343	Mean value ≤ 0.25 mm at thickness ≥ 3.0 mm Mean value ≤ 0.20 mm at thickness ≤ 3.0 mm	0.15 mm	0.15 mm	0.15 mm	0.30 mm
Abrasion resistance	ISO 4649, procedure A	≤ 250 mm ³	115 mm ³	115 mm ³	130 mm ³	90 mm ³
Colour fastness to artificial light	ISO 105-B02, procedure 3, test conditions 6.1 a)	At least level 6 on the blue scale; ≥ level 3 on the grey scale (= 350 MJ/m ²)	← Grey scale ≥ level 3 acc. to ISO 105-A02 →			
Classification	EN ISO 10 874	Residential/Commercial/Industrial	23/34/43	23/34/43	23/32/41	23/34/43

Additional technical properties

Toxicity of fire gases	DIN 53 436		Carbonisation gases are non-toxic		-	-
Anti-slip properties	DIN 51 130	According to BGR 181	R 9	R 9 926 grano/Art. 1880 = R 9 926 grano/Art. 1870 = R 10 arago = R 10	R 9	R 9
	DIN 51 097		A	arago = B	-	-
Improvement in footfall sound absorption	ISO 10 140-3		12 dB	10 dB	9 dB	15 dB
Effect of chemicals	EN ISO 26 987		← Resistant depending on concentration and time of exposure* →			
Thermal conductivity	EN 12 667		0.42 W/mK	0.42 W/mK	0.43 W/mK	0.21 W/mK
			← Suitable for underfloor heating systems →			
Electrical insulation properties	IEC 60 093, VDE 0303 T.30		← > 10 ¹⁰ Ohm →			
Electrical propensity when walked upon	EN 1815		← Antistatic, charging in case of rubber soles < 2 kV →			
Effect of a castor chair	EN 425		← Suitable if castor wheels, type W, according to EN 12 529 are used →			

* In case of increased impact of oils, grease, acids, alkalis and other aggressive chemicals please contact us.

EN 1817: Specification for homogeneous and heterogeneous smooth elastomer floor coverings
EN 12 199: Specification for homogeneous and heterogeneous profiled elastomer floor coverings

Colour variations due to different production batches as well as technical alterations to improve the product have to be accepted.

noraplan®

	Test method	Requirements	Average test results from running production				
			uni 2.0 mm	eco 2.0 mm senitica 2.0 mm signa 2.0 mm stone 2.0 mm valua 2.0 mm lona 2.0 mm	unita 2.0 mm	ultra grip 2.0 mm	senitica 3.0 mm signa 3.0 mm valua 3.0 mm
CE conformity	EN 14 041		← Manufacturer: nora systems GmbH, D-69469 Weinheim →				
DoP-No.	EN 14 041		0018	0016	0010	0016	0017
Dynamic coefficient of friction	EN 13 893	DS	← Fulfilled →				
Reaction to fire	EN 13 501-1	Not bonded	B _f s1	B _f s1, bonded	C _f s1	B _f s1, bonded	C _f s1
Reaction to fire	EN 13 501-1	Bonded on mineral subfloor	B _f s1	B _f s1	C _f s1	B _f s1	B _f s1

Properties acc. to EN 1817/EN 1816

Thickness	EN ISO 24 346	Mean value without foam backing ± 0.15 mm with foam backing ± 0.20 mm	2.0 mm -	2.0 mm -	2.0 mm -	3.0 mm -	- 4.0 mm	
Dimensional stability	EN ISO 23 999	± 0.4 %	← ± 0.3 % →					
Cigarette-burn resistance	EN 1399	Procedure A (stubbed out) level ≥ 4 Procedure B (burning) level ≥ 3	← Fulfilled →					
Flexibility	EN ISO 24 344, procedure A	Mandrel diameter 20 mm, no fissuring	← Fulfilled →		Not fulfilled	Fulfilled	-	← Fulfilled →
Hardness	ISO 7619	≥ 75 Shore A	94 Shore A	92 Shore A	92 Shore A	92 Shore A	85 Shore A	
Residual indentation	EN ISO 24 343	Mean value ≤ 0.15 mm at thickness < 2.5 mm	0.05 mm	0.05 mm	0.05 mm	-	-	
		Mean value ≤ 0.20 mm at thickness ≥ 2.5 mm	-	-	-	0.05 mm	-	
		acoustic: Mean value ≤ 0.25 mm	-	-	-	-	0.25 mm	
Abrasion resistance	ISO 4649, procedure A	≤ 250 mm ³	130 mm ³	150 mm ³	90 mm ³	150 mm ³	130 mm ³	
Colour fastness to artificial light	ISO 105-B02, procedure 3, test conditions 6.1 a)	At least level 6 on the blue scale; ≥ level 3 on the grey scale (= 350 MJ/m ²)	← Grey scale ≥ level 3 acc. to ISO 105-A 02 →					
Classification	EN ISO 10 874	Residential/Commercial/Industrial	23/34/42	23/34/42	23/34/42	23/34/43	23/33/-	

Additional technical properties

Toxicity of fire gases	DIN 53 436		← Carbonisation gases are non-toxic →				
Anti-slip properties	DIN 51 130	According to BGR 181	R 9	stone Art. 149/249: R 10 Others: R 9	R 11	R 9	stone acoustic: R 10 Others: R 9
	DIN 51 097		-	stone Art. 149/249: A; B	A; B; C	-	-
	BS 7976 TRRL Pendulum		-	-	36+ Wet & dry	-	-
	SATRA TM 144		-	-	Wet: > 0.6 Dry: > 0.45	-	-
Improvement in footfall sound absorption	ISO 10 140-3		6 dB	6 dB	7 dB	8 dB	20 dB
Effect of chemicals	EN ISO 26 987		← Resistant depending on concentration and time of exposure* →				
Thermal conductivity	EN 12 667		0.54 W/mK	0.61 W/mK	0.61 W/mK	0.61 W/mK	0.12 W/mK
			← Suitable for underfloor heating systems →				
Electrical insulation properties	IEC 60 093, VDE 0303 T.30		← > 10 ¹⁰ Ohm →				
Electrical propensity when walked upon	EN 1815		← Antistatic, charging in case of rubber soles < 2 kV →				
Effect of a castor chair	EN 425		← Suitable if castor wheels, type W, according to EN 12 529 are used →				

* In case of increased impact of oils, grease, acids, alkalis and other aggressive chemicals please contact us.

EN 1817: Specification for homogeneous and heterogeneous smooth elastomer floor coverings

EN 1816: Specification for homogeneous and heterogeneous smooth elastomer floor coverings with foam backing

Colour variations due to different production batches as well as technical alterations to improve the product have to be accepted.

nora[®] nTx

	Test method	Requirements	Average test results from running production			
			noraplan [®] eco nTx** senica nTx signa nTx** stone nTx** unita nTx** valua nTx** lona nTx**	noraplan [®] uni nTx	noraplan [®] ultra grip nTx	norament [®] 926 granonTx 926 satira nTx 926 aragonTx
CE conformity	EN 14 041		← Manufacturer: nora systems GmbH, D-69469 Weinheim →			
Dynamic coefficient of friction	EN 13 893	DS	← Fulfilled →			
Reaction to fire	EN 13 501-1	CF-s1, bonded	CF-s1, bonded	Bff-s1, bonded	CF-s1, bonded	CF-s1, bonded
Thermal conductivity	EN 10 456	$\lambda = 0.17 \text{ W/(m}^{\circ}\text{K)}$	← Fulfilled →			
DoP-No.	EN 14 041		0027	0028	0029	0031
Properties acc. to EN 1817						
Thickness	EN ISO 24 346	Mean value ± 0.15 mm of nominal value	2.1 mm or 3.1 mm	2.1 mm	2.1 mm	3.6 mm
Dimensional stability	EN ISO 23 999	$\pm 0.4 \%$	← $\pm 0.3 \%$ →			
Cigarette-burn resistance	EN 1399	Procedure A (stubbed out) \geq level 4 Procedure B (burning) \geq level 3	← Fulfilled →			
Flexibility	EN ISO 24 344, procedure A	Mandrel diameter 20 mm, no fissuring	Fulfilled (Exception: unita)	← Fulfilled →		
Hardness	ISO 7619	≥ 75 Shore A	92 Shore A	94 Shore A	92 Shore A	82 Shore A
Residual indentation	EN ISO 24 343	noraplan [®] nTx: Mean value ≤ 0.15 at thickness < 2.5 Mean value ≤ 0.20 at thickness < 2.5 norament [®] nTx: Mean value ≤ 0.25 at thickness ≥ 3.0 Mean value ≤ 0.20 at thickness ≥ 3.0	0.05 mm	0.10 mm	0.15 mm	0.15 mm
Abrasion resistance at 5 N load	ISO 4649, procedure A	$\leq 250 \text{ mm}^3$	150 mm ³	150 mm ³	90 mm ³	130 mm ³
Colour fastness to artificial light	ISO 105-B02, procedure 3, test conditions 6.1 a)	At least 6 on the blue scale, ≥ 3 on the grey scale ($\approx 350 \text{ MJ/m}^2$)	← Grey scale ≥ 3 acc. to ISO 105-A02 →			
Additional technical data						
Weight	EN ISO 23 997		2.1 mm: $\sim 3.36 \text{ kg/m}^2$ 3.1 mm: $\sim 5.08 \text{ kg/m}^2$	$\sim 3.55 \text{ kg/m}^2$	$\sim 3.30 \text{ kg/m}^2$	$\sim 5.40 \text{ kg/m}^2$
Tear strength	ISO 34-1, method B, procedure A		28 N/mm	n. a.	n. a.	34 N/mm
Slip resistance	DIN 51 130		R 9* (smooth surface) R 10* (finely-structured surface)	R 9*	R 11*	R 9* R 10* (serra)
Improvement in footfall sound absorption	ISO 10 140-3		2.1 mm: 3 dB 3.1 mm: 4 dB	3 dB	3 dB	8 dB
Effect of chemicals	EN ISO 26 987	Depending on concentration and time of exposure	← Resistant ^(A) →			
Electrostatic behaviour when being walked on	EN 1815		← Antistatic, charging in case of rubber soles $< 2 \text{ kV}$ →			
Effect of a castor chair	EN 425		← Suitable if castor wheels, type W, according to EN 12 529 are used →			
Fire behaviour/smoke behaviour						
		Fulfills the requirements				
Fire behaviour	EN 13501-1		CF-s1, bonded	Bff-s1, bonded	CF-s1, bonded	CF-s1, bonded
	EN 45 545	Hazard Level	H L1*	← n. a. →		
Fire behaviour	ASTM E-648 / ISO 9239-1		Class 1 ($\geq 0.50 \text{ W/cm}^2$)*	← n. a. →		
Smoke density	ASTM E-662	Federal Railroad Administration	After 1.5 minutes < 100 , after 4 minutes < 200 [†]	← n. a. →		
Adhesive characteristics						
Description			← Pressure-sensitive hot melt adhesive →			
Density			← approx. 0.92 g/cm^3 →			
Softening range	Kofler bench		← approx. $105 \text{ }^{\circ}\text{C}$ →			
Viscosity			← $45,000 \text{ mPas}$ at $170 \text{ }^{\circ}\text{C}$ till $13,000 \text{ mPas}$ at $190 \text{ }^{\circ}\text{C}$ →			
Solid body content			← 87% →			
VOC			← 0% →			

* Tested and certificated by an independent testing institute.

** Minimum quantities required.

[†] In case of increased impact of oils, greases, acids, alkalis and other aggressive chemicals as well as light oils and fuels - please contact us.

Colour variations due to different production batches as well as technical alterations to improve the product have to be accepted.

nora[®] ESD floor coverings

	Test method	Requirements	Average test results from running production				
			norament [®]		noraplan [®]		
			928 grano ed	927 grano ec	senitica ed 2.0 mm signa ed 2.0 mm stone ed 2.0 mm	senitica ed 3.0 mm signa ed 3.0 mm	astro ec
CE conformity	EN 14 041		← Manufacturer: nora systems GmbH, D-69469 Weinheim →				
DoP-No.	EN 14 041		0005	0022	0001	0001	0011
Dynamic coefficient of friction	EN 13 893	DS	← Fulfilled →				
Electrical behaviour	EN 1081	ed ≤ 10 ⁹ Ohm	← Fulfilled →		← Fulfilled →		
		ec ≤ 10 ⁹ Ohm		Fulfilled			Fulfilled
Reaction to fire	EN 13 501-1	Not bonded	C _s -1, bonded	C _s -2	← C _s -1 →		
Reaction to fire	EN 13 501-1	Bonded on mineral subfloor	B _f -1	C _s -1	B _f -1		C _s -1

Properties acc. to EN 1817/EN 12 199

Thickness	EN ISO 24 346	Mean value ± 0.20 mm according to EN 12 199					
		Mean value ± 0.15 mm according to EN 1817	3.5 mm	3.5 mm	2.0 mm	3.0 mm	2.0 mm
Dimensional stability	EN ISO 23 999	± 0.4 %	← ± 0.3 % →				
Tear strength	ISO 34-1, method B, procedure A	Mean value ≥ 20 N/mm	45 N/mm	30 N/mm	-		
Cigarette-burn resistance	EN 1399	Procedure A (stuffed out) ≥ level 4 Procedure B (burning) ≥ level 3	← Fulfilled →				
Flexibility	EN ISO 24 344, procedure A	Mandrel diameter 20 mm, no fissuring	← Fulfilled →		-	Fulfilled	
Hardness	ISO 7619	≥ 70 Shore A (EN 12 199) ≥ 75 Shore A (EN 1817)	← 84 Shore A →	90 Shore A	← 95 Shore A →		
		Residual indentation	EN ISO 24 343	Mean value ≤ 0.15 mm at thickness < 2.5 mm Mean value ≤ 0.20 mm at thickness ≥ 2.5 mm	-	0.05 mm	
		Mean value ≤ 0.25 mm at thickness ≥ 3.0 mm Mean value ≤ 0.20 mm at thickness ≤ 3.0 mm	0.05 mm		-		
Abrasion resistance	ISO 4649, procedure A	≤ 250 mm ³	80 mm ³	70 mm ³	150 mm ³		150 mm ³
Colour fastness to artificial light	ISO 105-802, procedure 3, test conditions 6.1 a)	At least level 6 on the blue scale; ≥ level 3 on the grey scale (= 350 MJ/m ²)	← Grey scale ≥ level 3 acc. to ISO 105-A02 →				
Classification	EN ISO 10 874	Residential/Commercial/Industrial	23/34/43		23/34/42	23/34/43	23/34/42

Additional technical properties

Toxicity of fire gases	DIN 53 436		Carbonisation gases are non-toxic	-	Carbonisation gases are non-toxic		
Anti-slip properties	DIN 51 130	According to BGR 181	R 9		stone ed: R 10 Others: R 9	R 9	
Improvement in footfall sound absorption	ISO 10 140-3		10 dB	10 dB	6 dB	7 dB	6 dB
Effect of chemicals	EN ISO 26 987		← Resistant depending on concentration and time of exposure* →				
Thermal conductivity	EN 12 667		0.40 W/mK	0.56 W/mK	0.54 W/mK		0.45 W/mK
			← Suitable for underfloor heating systems →				
Effect of a castor chair	EN 425		← Suitable if castor wheels, type W, according to EN 12 529 are used →				

Electrical behaviour**

Resistance to EPA ground	ESD STM 7.1/ IEC 61 340-4-1	Measuring the installed floor at 23 °C (± 2 °C) and ≥ 25 % r.h.	10 ⁶ - 9 x 10 ⁷ Ohm	< 10 ⁶ Ohm	10 ⁶ - 9 x 10 ⁷ Ohm	< 10 ⁶ Ohm	
		Measuring the installed floor at 23 °C (± 2 °C) and < 25 % r.h., installed on an appropriate subfloor build up	10 ⁶ - 10 ⁹ Ohm***	< 10 ⁶ Ohm	10 ⁶ - 10 ⁹ Ohm***	< 10 ⁶ Ohm	
Operator system - Resistance to ground	ESD STM 97.1/ IEC 61 340-4-5	For the system floor/conductive footwear (R < 5 x 10 ⁶ Ohm) measuring the installed floor at 23 °C (± 2 °C) and ≥ 25 % r.h.	≤ 3.5 x 10 ⁷ Ohm	< 3.5 x 10 ⁷ Ohm	≤ 3.5 x 10 ⁷ Ohm		< 3.5 x 10 ⁷ Ohm
Body voltage generation	ESD STM 97.2 IEC 61 340-4-5	Tested with defined conductive footwear with 21 °C and 20 % r.h.	← < 10 V →				
Resistance to earth	EN 1081		10 ⁶ - 9 x 10 ⁷ Ohm	< 10 ⁶ Ohm	10 ⁶ - 9 x 10 ⁷ Ohm	< 10 ⁶ Ohm	
Insulation resistance	VDE 0100 - 600 electrode 1; 500 V		10 ⁶ - 9 x 10 ⁷ Ohm	< 10 ⁶ Ohm	10 ⁶ - 9 x 10 ⁷ Ohm		< 10 ⁶ Ohm
	VDE 0100 - 600 electrode 2; 220 V wet		≥ 1 x 10 ⁵ Ohm	-	≥ 5 x 10 ⁴ Ohm	≥ 1 x 10 ⁵ Ohm	-

* In case of increased impact of oils, grease, acids, alkalis and other aggressive chemicals please contact us.

** If installed electrically dissipative and conductive in conformity with our installation instruction and according to the recommendations of the adhesive manufacturer.

The used adhesive has to have a permanent resistance of R < 3 x 10⁵ Ohm according to EN 13 415.

*** If extremely low humidity values (< 25 % relative air humidity (= r.h.)) are expected for a longer period, please contact nora systems GmbH, Technical Service, for advice.

EN 1817: Specification for homogeneous and heterogeneous smooth elastomer floor coverings
EN 12 199: Specification for homogeneous and heterogeneous profiled elastomer floor coverings

Colour variations due to different production batches as well as technical alterations to improve the product have to be accepted.



Technische Nationalbibliothek, Czech Republic

Please note:

norament® and noraplan® have been developed for indoor installation. nora® floor coverings are not suitable for installation in outdoor applications or in areas with constant and direct wet loads.

The particulars given in this brochure are for informational purposes only concerning the products presented. They represent descriptions or designations, but not any warranted qualities. This information cannot cover all possible service conditions which our floor coverings may encounter.

If the floor covering is going to be exposed to out-of-the-ordinary service conditions and stresses (e.g. extreme UV radiation, chemical substances or other aggressive media), please contact us for advice.

We will be pleased to supply you on request with flooring samples to enable you to carry out in-house tests. We reserve the right to alter technical values as part of an ongoing product improvement process.

This brochure as well as the pictures and illustrations it contains are subject to a copyright owned by nora systems GmbH, Weinheim, and may be used with its previous written approval only.

Printed on 100 % chlorine-free bleached paper.

