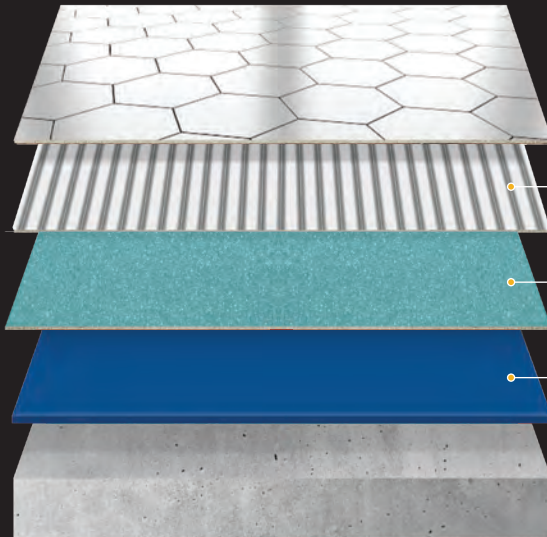




# SikaTile®

A SIKA SECURE TILING SYSTEM



## SIKA SECURE

TILE ADHESIVE  
**SikaTile®  
-410 Secure Set**

WATERPROOFING  
**SikaTile®  
-110 Secure Proof**

PRIMER  
**SikaTile®  
-010 Secure Prime**

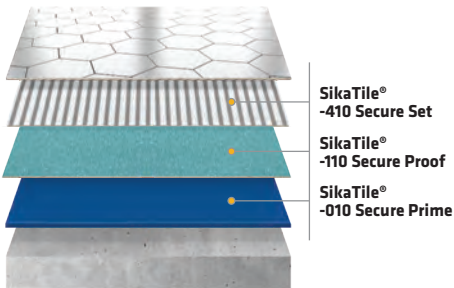
BUILDING TRUST



# Why SikaTile®?

## S System Solutions The Sika Secure System

Sika provides a complete tiling system package from top to bottom.



## I Innovative Leading edge technology

Sika's success and reputation is based on our long-lasting tradition of research and development. This has recently brought innovations like Dustless® Technology to SikaTile® setting products.

1240

EMPLOYEES ARE  
DEDICATED TO  
RESEARCH AND  
DEVELOPMENT

150

NEW INVENTIONS  
IN 2021

99

NEW PATENTS FILED  
SINCE 2021

## T Trusted Partner Building trust everyday

You may not know it or see it, but Sika has products for every project.



## I International Global leader in tile and stone

Sika is known for high quality mortars and is a leader, innovator and top producer of tile setting products globally.



# More than a system

# IT'S A COMMITMENT

## K Knowledge

More than 100 years of expertise

Sika's reputation for quality and reliability is illustrated through a comprehensive portfolio of technologies and solutions.

### SIKA AT A GLANCE

27,000	EMPLOYEES
101	COUNTRIES
300+	PLANTS WORLDWIDE
4	NEW / EXPANDED PLANTS IN 2021
99	NEW PATENTS IN 2021
7+	ACQUISITIONS IN 2021
\$9.25 BN	NET SALES IN 2021 (IN CHF)

## A Accountable

Environmentally responsible

**SUSTAINABLE SOLUTIONS**  
All new products developed with sustainability

**CLIMATE PERFORMANCE**  
15% reduction of CO<sub>2</sub> emmissions

**COMMUNITY ENGAGEMENT**  
10,000 working days of volunteer work

### MORE VALUE

### LESS IMPACT

**ENERGY**  
15% less energy  
15% renewable electricity rate

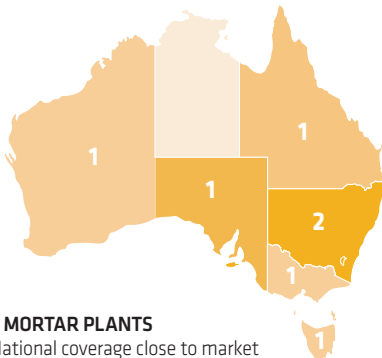
**WASTE & WATER**  
15% less waste  
15% less water  
25% higher recycling rate

**OCCUPATIONAL SAFETY**  
50% less accidents  
0 fatalities

## L Local Partner

High-touch service

Sika has plants and warehouses across Australia. Sika support is easily located and closer than you think.



## E Experts

Partner for success

All Sika solutions are designed with the customers' success in mind and to build long lasting and mutually beneficial relationships.



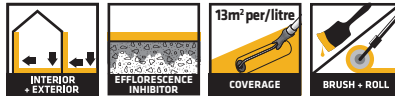
# Introducing SikaTile®

Be the first to use the latest technology in tiling systems from Sika. SikaTile® is an innovative tile and performance requirements of installers. From an efflorescence inhibiting primer with Crystal safer, environmentally friendly, Dustless® dry mix adhesive with 0% Crystalline Silica, your tiling s

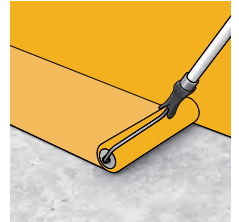


## SikaTile®-010 Secure Prime

Primer with efflorescence inhibiting properties

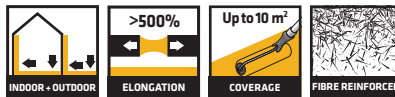


- Industry's first dedicated primer with efflorescence inhibiting properties
- Applies white and dries clear
- Fast drying and pore blocking
- For porous and dense substrates



## SikaTile®-110 Secure Proof

Waterproof membrane for under tile and stone applications

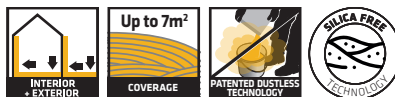


- Fibre reinforced for superior strength
- Class III flexible membrane with greater than 500% elongation
- Excellent antifracture properties
- Excellent cure time

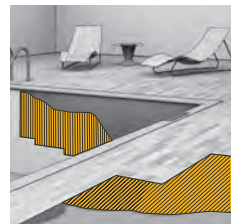


## SikaTile®-410 Secure Set

Silica free tile & stone adhesive



- 0% Crystalline Silica
- Dustless® Technology
- C2TES1 performance
- Non-slump suitable for large format tiles
- White colour suitable for natural stones



and stone installation product range that meets the unique challenges  
 line Technology to a fibre reinforced membrane for superior strength to a  
 system is secure with SikaTile®.



## SikaTile® Product Selection Chart

Characteristics	Application	SikaTile®-010 Secure Prime	SikaTile®-110 Secure Proof	SikaTile®-410 Secure Set	
Substrates (interior)	Concrete	✓	✓	✓	
	Early aged concrete (min 7 days at 21°C & 50% RH)	✓	Seek technical advice	✓	
	Cement based screeds and renders	✓	✓	✓	
	Early aged cement based screeds (min 24 hours at 21°C & 50% RH)	✓	Seek technical advice	✓	
	Old ceramic tiles	*	*	✓*	
	Cement boards and sheeting	✓	✓	✓	
	AAC	2 Coats required	✓	✓	
	Gypsum plasterboard	✓	✓	✓	
Substrates (exterior)	Concrete	✓	✓	✓	
	Early aged concrete (min 7 days at 21°C & 50% RH)	✓	Seek technical advice	✓	
	Cement based screeds and renders	✓	✓	✓	
	Early aged cement based screeds (min 24 hours at 21°C & 50% RH)	✓	Seek technical advice	✓	
	Cement boards and sheeting	✓	✓	✓	
	AAC	2 Coats required	✓	✓	
		Dry areas	✓	✓	✓
Application area	Wet areas	✓	✓	✓	
	Balcony	✓	✓	✓	
	Façade	✓	✓	✓	
	Submerged - pools & spas	✓	X	✓	
	Heavy duty pedestrian	✓	✓	✓	
	Heavy duty vehicular traffic	✓	✓	✓	
	Under floor heating	✓	✓	✓	
	Sika approved acoustic underlays	X	✓	✓	
	Types of tile	Ceramic			✓
		Porcelain			✓
Terracotta				✓	
Natural stone				✓	
Natural stone sensitive to moisture				X	
Surface	Wall	✓	✓	✓	
	Floor	✓	✓	✓	

\*Suitable for use with Sika® Eco Systems Prep n Prime. Use chart as a guide only. Always refer to the current Product Data Sheet for additional information.



Scan to learn  
more about  
SikaTile®



Scan to watch  
a SikaTile®  
installation

sika.com.au  
**1300 22 33 48**

Sika Australia Pty Ltd  
55 Elizabeth Street,  
Wetherill Park NSW 2164

**BUILDING TRUST**

