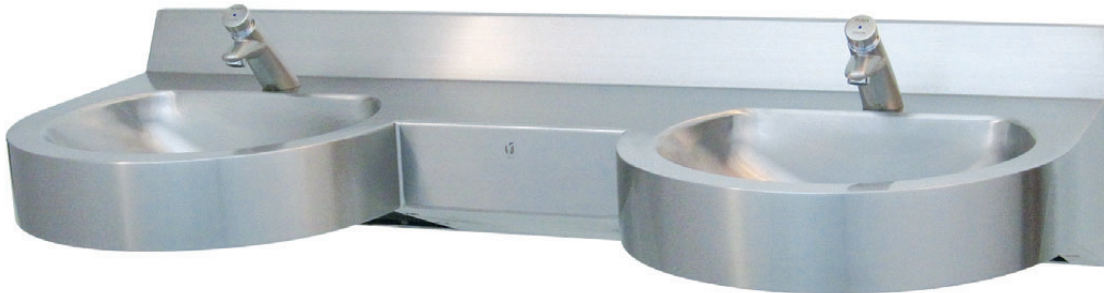


**CURVALINEAR™ DOUBLE BASIN**



**RBA8889-281 Curvalinear™ Double User Basin  
(Shown with optional tap RBA1083-607)**

**Materials**

**Countertop & Basin:** Constructed of heavy gauge, 1.5mm thick, type 304 stainless steel with satin finish. Two seamless D shape bowls are deep drawn into the countertop. Integral backsplash and frame all have fully welded, seamless corners. A 35mm diameter tap hole is centred behind the basins, on the countertop. Basins are supplied with standard 40mm waste outlet, fixing S-clips and security screw bit.

**Tapware:** To specify matching tapware [stainless steel 6-star self-closing] use RBA1083-607.

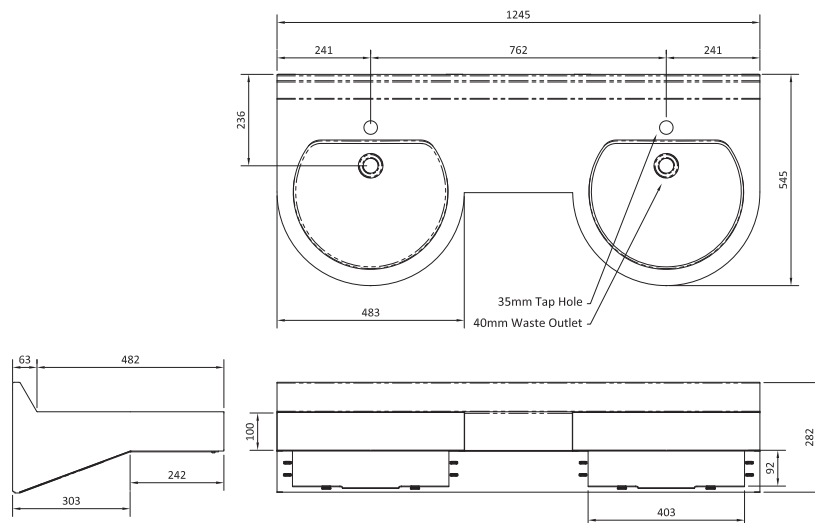
**Designers Note:** For increased vandal resistance, specify Model # RBA8889-282 Curvalinear™ Double Basin with Trap Covers to enclose and conceal under-bench piping (refer separate Technical Data Sheet).

RBA product is disabled compliant if it is installed with an appropriate tap (eg. RBA1083-607), and meets all other specified requirements stipulated in the AS1428.1-2009.

**Installation**

Ensure wall construction is suitable to support the unit. Mount unit to wall with S-clip brackets provided and through eight fixing holes. Fixings screws not furnished. Basin rim is typically mounted 864mm above FFL. Refer disabled code for mounting requirements where basin is for disabled use. Adjust height to suit application if required (ie Disabled or children's use). Refer Installation Instructions for location of fixing points, trap outlet location etc. (A Hardies low level P trap should be used).

**Important:** Installation instructions and current rough-in details should be furnished with each fixture. Do not rough in without certified dimensions. Dimensions are subject to manufacturer's tolerance of +/-10mm.



**MODEL# RBA8889-281 DOUBLE BASIN**

As improvements in the design and performance of RBA products are continuous, specifications may be subject to change without notice. The illustrations and descriptions herein are applicable to production as of the date of this Technical Data Sheet. Revised 07/11 Printed in Australia © 2011 by RBA Group TD/Model RBA8889-281/0711