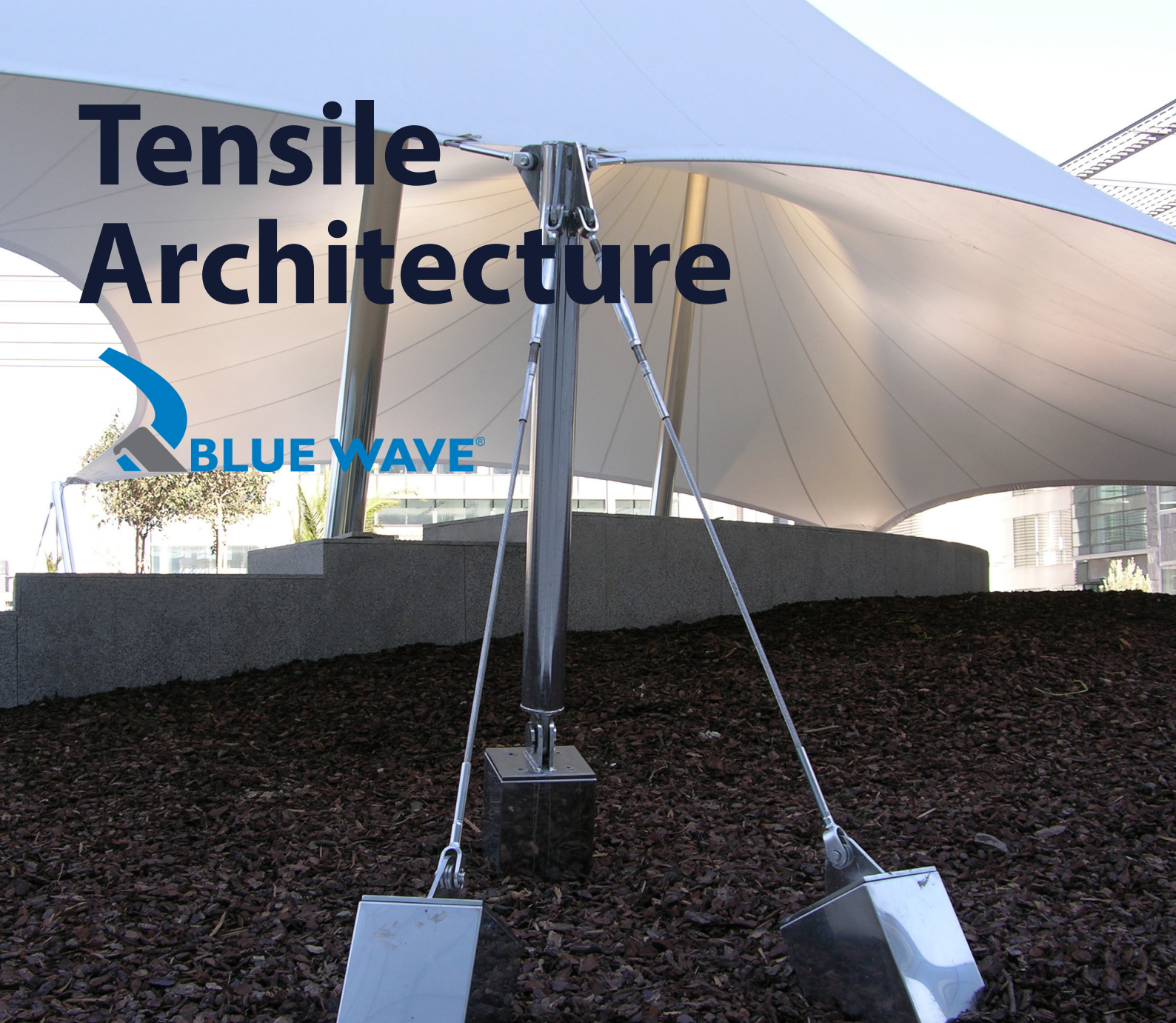


# Tensile Architecture



**MIAMI**  
**STAINLESS**  
[miamistainless.com.au](http://miamistainless.com.au)





**Full catalogues are available for download from our  
architecture specifications website**

**Visit [spec.miamistainless.com.au](http://spec.miamistainless.com.au)**

## INTRODUCTION

---

Miami Stainless is a proud distributor of the quality range of Blue Wave stainless steel hardware.

Blue Wave Wire Design Systems products are suitable for a variety of tensile architecture structures, including fabric structures, bracing and suspension bridges.

Manufactured in Denmark, Blue Wave delivers the highest standard of product quality, with the ability to work with your engineers to custom design unique tensile structures.

Blue Wave tensile applications include:

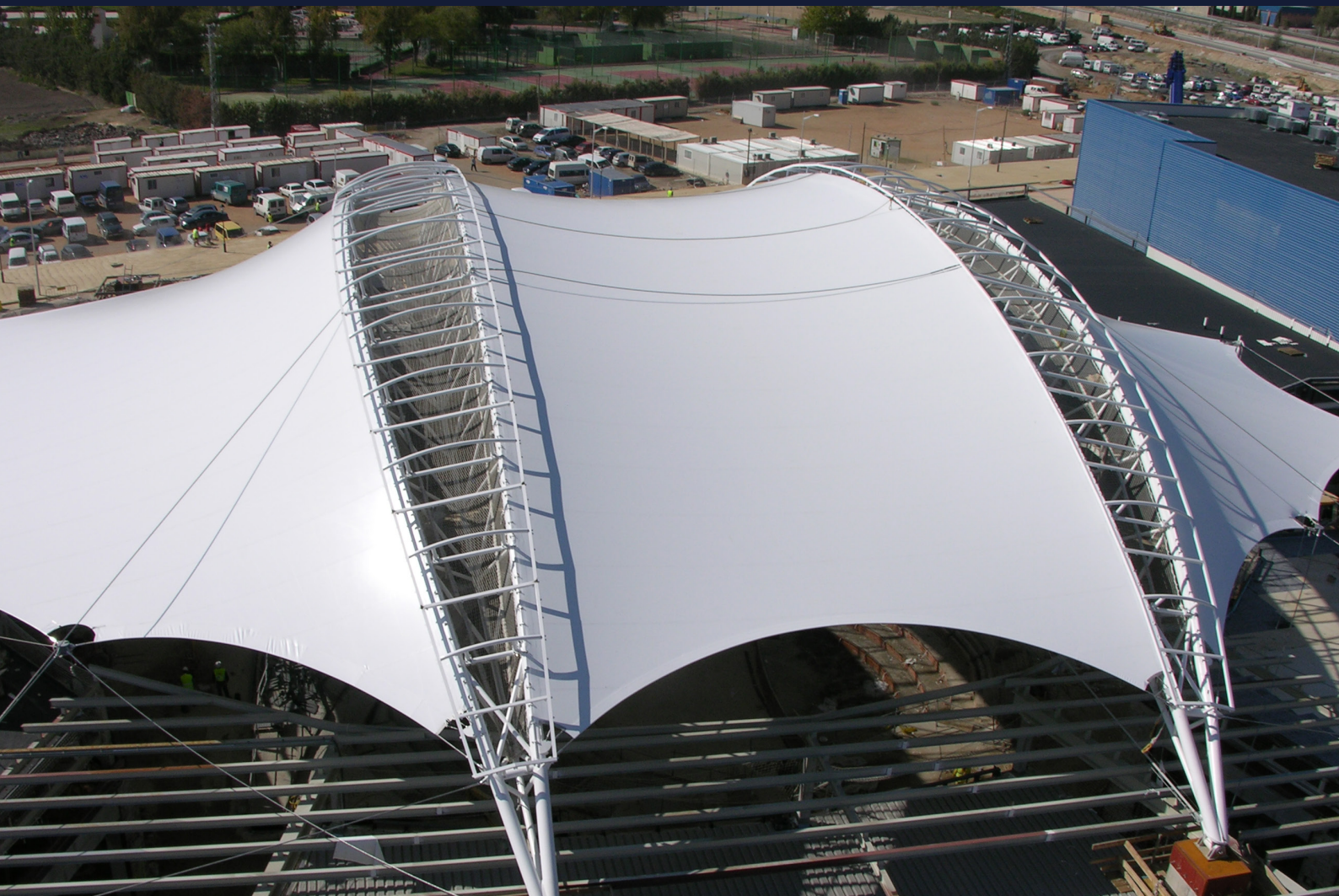
- Suspension bridges and shade
- Braces and trusses
- Fabric architecture and weather proof structures
- Catenary lighting
- Facades
- Landscaping and greenwall
- Signage & decorations

Tensile structures are growing in popularity for:

- Airports
- Sporting facilities
- Exhibition halls
- Bridging

*This guide aims to serve as an introduction Blue Wave tensile architecture products available from Miami Stainless.*





## ABOUT BLUE WAVE

---

Blue Wave has been operating in Australia since 2006 and is a subsidiary of Blue Wave A/S, Denmark. Blue Wave A/S have for more than 80 years produced stainless steel fittings for the marine and structural industries from its headquarters in Denmark.

Blue Wave A/S is currently among the top three largest manufacturers of high quality stainless steel rigging hardware in the world with their focus being on the Marine, Height Safety, Architectural and Industrial sectors. Today our product range covers one of the most extensive ranges of stainless steel wire fittings, ranging from 2mm to 32mm.

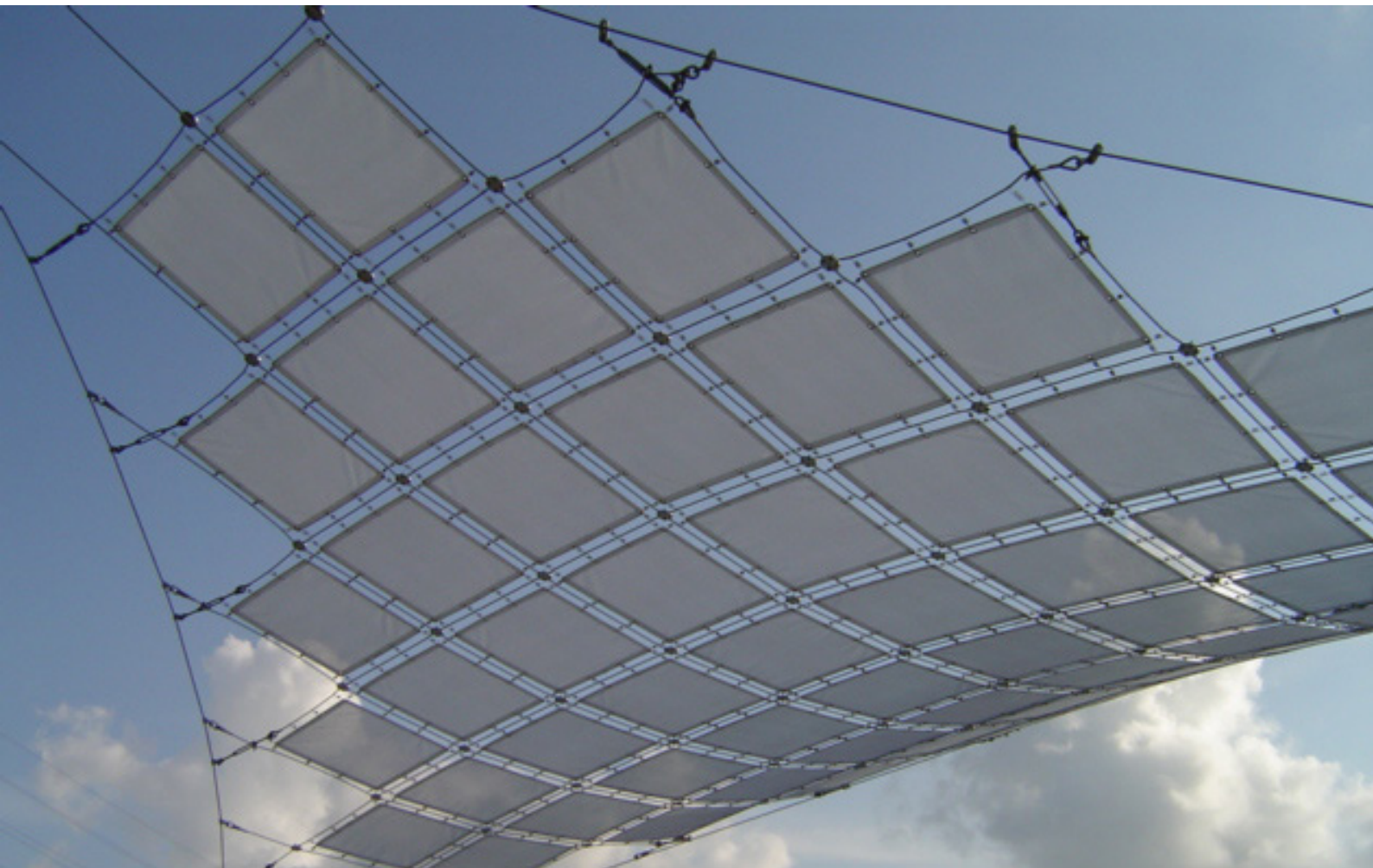


Blue Wave (Australia) Pty Ltd has an extensive stock holding of marine, height safety and industrial stainless steel fittings as well as a fully equipped workshop for production of stainless steel wire rope stays.

Our workshop equipment includes presses from Talurit AB, Sweden and terminal swagers from Wireteknik, Sweden.

Blue Wave Ranges:

- ▶ Wire Design Systems
- ▶ Height Safety
- ▶ Marine
- ▶ Rope Line





Blue Wave products are thoroughly tested in several steps from raw material to final inspection with the latest available testing equipment. **European Norm Certification** is available on most components.

**Lloyd's Certification** is also available on a select range of products. It is no surprise that Blue Wave stainless steel products are used extensively in places where safety and reliability is required.

**' ALL BLUE WAVE PRODUCTS ARE PRODUCED  
IN DENMARK FROM THE HIGHEST QUALITY  
STAINLESS STEEL '**



## **RIGGING SCREWS FORK-TERMINAL**

M20> M36 Available with threaded Bronze inserts in a S/S Body. Suits wire 2mm to 26mm

## **RIGGING SCREWS MARCHINE FORK-TERMINAL**

As demand for larger wire sizes has been growing, so has the range of larger machined fittings by Blue Wave. The machined forks are, as most fittings by Blue Wave, marked with wire size and swage depth marking for ease of use. M20 to M52.



## **THREADED FORKS WELDED**

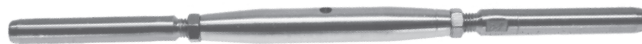
Welded forks with thread and pin for rigging screws, inside thread parts or other terminations. Available with left handed and right handed thread -also UNF sizes on request. Available M5 to M36.



## **FORK TERMINALS - MACHINED**

As demand for larger wire sizes has been growing, so has the range of larger machined fittings by Blue Wave. The machined forks are, as most fittings by Blue Wave, marked with wire size and swage depth marking for ease of use. Suits up to 36mm wire.

This is only a sample of the Blue Wave range. Full range, specifications and drawing available in [Blue Wave Wire Design catalogue at \[spec.miamistainless.com.au\]\(http://spec.miamistainless.com.au\)](#)



## **RIGGING SCREW TERMINAL - TERMINAL**

M20> M36 Available with threaded Bronze inserts in a S/S Body. Suits wire 2mm to 26mm

This is only a sample of the Blue Wave range. Full range, specifications and drawing available in [Blue Wave Wire Design catalogue](#) at [spec.miamistainless.com.au](http://spec.miamistainless.com.au)





## **RIGGING SCREW EYE FORK**

M20 > M36 Available with threaded Bronze inserts in a S/S Body. Suits wire 2mm to 26mm

This is only a sample of the Blue Wave range. Full range, specifications and drawing available in Blue Wave Wire Design catalogue at [spec.miamistainless.com.au](http://spec.miamistainless.com.au)





## **THREADED TERMINALS**

The wide range of threaded Blue Wave terminals are engraved with wire size and swage depth making them easy to use when pressing or swaging them onto the wire. The terminals are available with left handed or right handed threads, and also, on request, with split pin hole (see details below on this page), or UNF thread! Threaded terminals are used to put tension on a wire, either with the help of nuts and washers or as part of a rigging screw. M5 to M52 to suit wires 2mm to 36mm.

This is only a sample of the Blue Wave range. Full range, specifications and drawing available in [Blue Wave Wire Design catalogue](#) at [spec.miamistainless.com.au](http://spec.miamistainless.com.au)



## **RIGGING SCREW EYE TERMINAL**

M20> M36 Available with threaded Bronze inserts in a S/S Body. Suits wire 2mm to 26mm

This is only a sample of the Blue Wave range. Full range, specifications and drawing available in [Blue Wave Wire Design catalogue at \[spec.miamistainless.com.au\]\(http://spec.miamistainless.com.au\)](#)





MIAMI STAINLESS PTY LTD

3/99 West Burleigh Road, Burleigh Heads QLD 4220

Tel: +61 7 5576 1234 Fax: +61 7 5576 1233

[info@miamistainless.com.au](mailto:info@miamistainless.com.au)

[miamistainless.com.au](http://miamistainless.com.au)