



## KARONA 2

Eclipse / Lightning / Blizzard / Spectrum



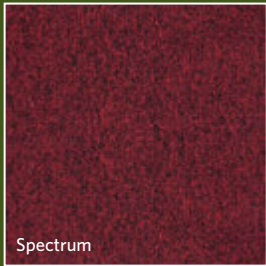
Eclipse



Lightning



Blizzard



Spectrum



**Ontera**<sup>™</sup>  
A MILLIKEN COMPANY

## **INSPIRED. INSPIRING.**

Karona 2 collection takes textural and tonal inspiration from extreme weather conditions, similar to a blizzard haze, atmospheric elements and deep tonal greys found in hardened lava rock. A strong variation of a greyscale palette paired with subtle patterns and coordinating accent colours offers simplicity and depth with effect.



Eclipse in Galaxy, monolithic installation



Eclipse in Blue Moon and Spectrum in Winter Storm, monolithic installation



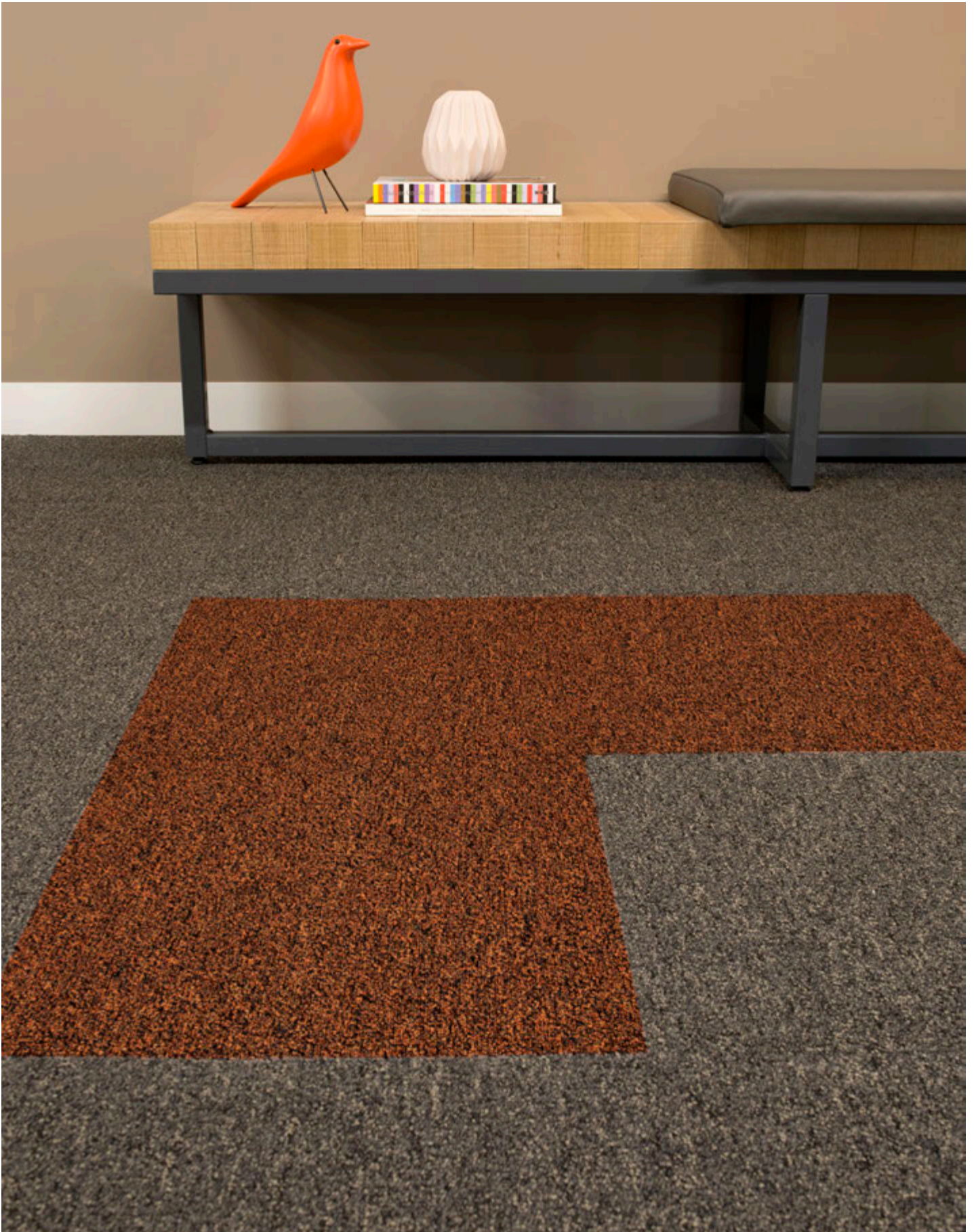
Eclipse in Solar, monolithic installation



**Eclipse in Solar and Lightning in Alto, monolithic installation**



**Eclipse in Solar and Spectrum in Hurricane, monolithic installation**



Eclipse in Atmosphere and Spectrum in Thunder, monolithic installation



Eclipse in Frost Bite, monolithic installation



WIGGLEY CHEWING gum 2  
THOMAS CHIPMAN POTATO CHIPS 2.5

MOUNTAIN GOAT 7  
MOUNTAIN GOAT TWO STEP APPLE CIDER 7

DOMAIN CHANDON  
COOL WOODS

---

 PLEASE SEE THE MENU ON THE  CLIPBOARD FOR FOOD BY 

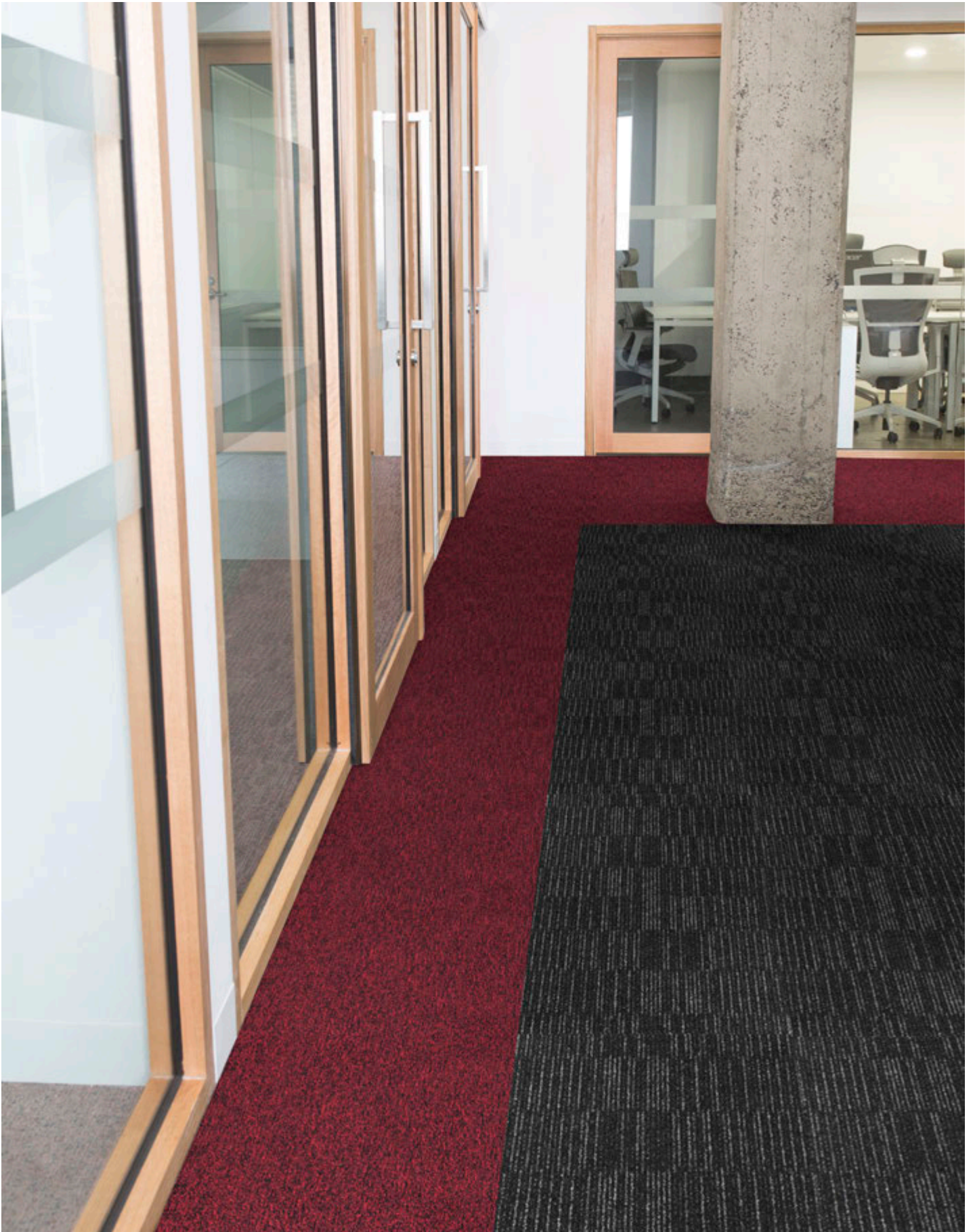
---

 WE ARE PROUDLY SERVING A NEW STYLE OF BATCH BREWING. ENJOY "WHERE'S MARCEL?" SINGLE ORIGIN BEANS ANYTIME OF THE DAY. ROASTED BY US.  😊

Eclipse in Solar, Spectrum in Freeze and Blizzard in Volcano, monolithic installation







Lighting in Alto and Spectrum in Heat, monolithic installation

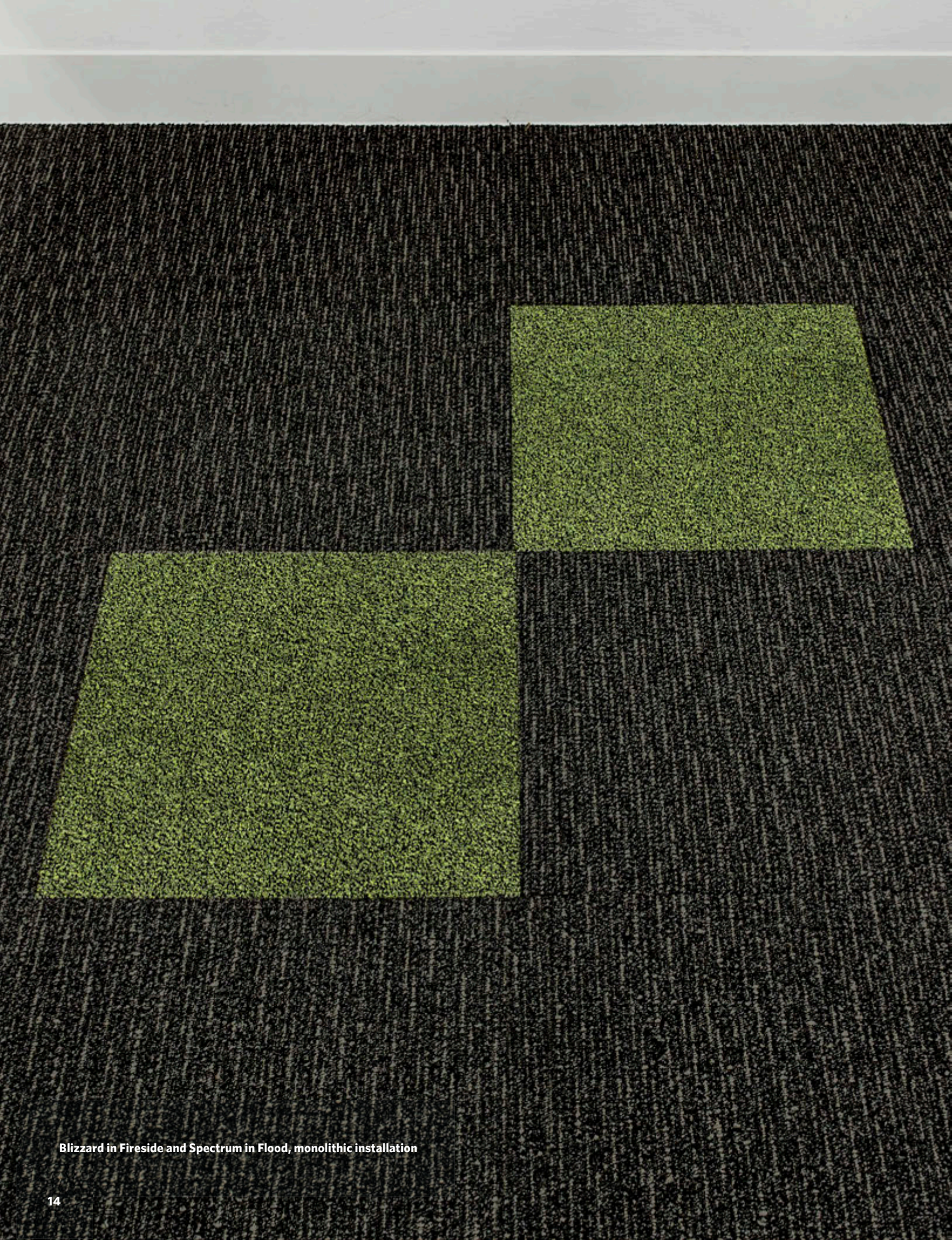


Lightning in Breeze, monolithic installation



Blizzard in Cyclone and Eclipse in Rogue, quarter turn installation





Blizzard in Fireside and Spectrum in Flood, monolithic installation

# COLOURLINE

## Eclipse (ECL)



ECL133 SOLAR



ECL174-27 ROGUE



ECL124-27 GALAXY



ECL27-152 FROST BITE



ECL27-154 BLUE MOON



ECL120 ATMOSPHERE

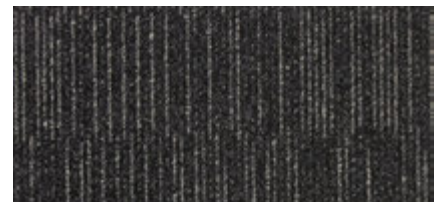
## Lightning (LIG)



LIG153-133 ALTO

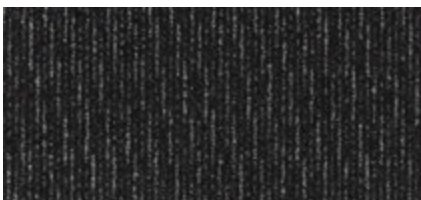


LIG174 BREEZE



LIG120-133 EQUATOR

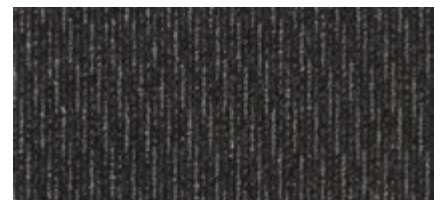
## Blizzard (BLI)



BLI153-133 VOLCANO



BLI174 CYCLONE

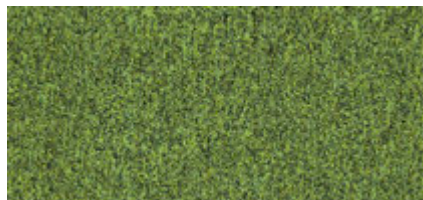


BLI120-133 FIRESIDE

## Spectrum (SPE)



SPE109 HEAT



SPE45 FLOOD



SPE33 THUNDER



SPE125 WINTER STORM



SPE137 HURRICANE



SPE123 FREEZE

# KARONA 2

## SPECIFICATION

### Construction

Tufted, Textured Loop

### Tile Size

50 cm x 50 cm

### Face Fiber

100% Invista Lumena Nylon 6,6

### Dye Method

Solution Dyed

### Standard Backing

PVC-Free B2™ Hard Back

### Indoor Air Quality—CRI Green Label Plus™

GLP3200, Carpet Category 14X

## Installation Method



MONOLITHIC



QUARTER TURN

**This hard-back carpet tile product is covered by one or more patents,** published applications and/or patents pending. Specifications are subject to normal manufacturing tolerances and may be changed without prior notice.



**Declare.**



green building council australia  
MEMBER



**Ontera**  
A MILLIKEN COMPANY

### Australia

Toll Free: 1800 668372

### New Zealand

Toll Free: 0800 668372



**Growing greener for over 100 years.**  
Visit [milliken.com](http://milliken.com) for more information.