

Promat

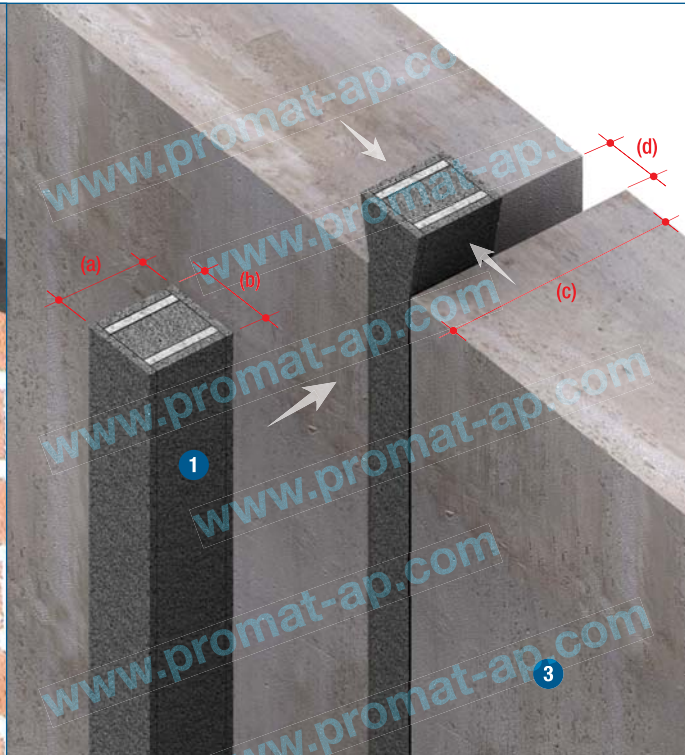


**PROMASEAL® FyreStrip
For Movement Joints Seals**



SE 81.24.1

SE 82.24.1



TECHNICAL DATA

1 For FRL up to -/240/240, please consult Promat if integrity only, straps are required.
PROMASEAL® FyreStrip

2 Masonry or concrete floor slab, with fire resistance higher than or equal to that of the installed system.

3 Masonry, concrete or brick wall, with fire resistance higher than or equal to that of the installed system.

PROMASEAL® FyreStrip is a compressible, flexible, fire resistant seal which is used where movement joints are formed in the structure of building. It consists of layers of intumescent material bonded to a special foam and has been successfully fire tested up to 240 minutes in joints within masonry or concrete walls and concrete floors in accordance with the relevant criteria of BS476: Part 20, AS1530: Part 4 and AS4072: Part 1.

PROMASEAL® FyreStrip is available in the following dimensions:

- FS20 – 90mm x 28mm x 1000mm;
- FS40 – 90mm x 46mm x 1000mm;
- FS50 – 90mm x 56mm x 1000mm;
- FS80 – 100mm x 84mm x 1000mm;
- FS100 – 120mm x 124mm x 1000mm.

The strips are ideal for sealing movement joints at junctions between compartment walls and floors. Their flexibility makes them suitable for use in a variety of configurations. The fire performance of PROMASEAL® FyreStrip will vary according to the particular application. In addition, the width of the gap into which the strip will be inserted as well as their orientation will have effect on the level of protection provided.

Installation Guide

The strip thickness is determined by the minimum and maximum positions of the gap width expected during the life of the building. The strip thickness should not be less than the maximum expected width (see table on this page). The strip depth is a function of the gap width and the fire resistance period. The appropriate size of PROMASEAL® FyreStrip is simply compressed between fingers and thumb until it can be inserted into the required gap. For up to 240 minutes fire resistance only one strip is required. The strip must be centrally located in the wall or floor joint. In cold conditions it is advisable to store in a warm atmosphere immediately prior to installation as this improves compressibility. The strip may readily be cut to suit a particular length.

When more than one length of PROMASEAL® FyreStrip is required in a joint, ensure the two adjoining pieces are butted tightly and there is no gap between the adjoining ends. At the ends of each joint, ensure the strip is fitted tight to the adjacent surface.

For lower FRL, the thickness of the building element may well be less than specified below.

Code no.	FS20 (mm)	FS40 (mm)	FS50 (mm)	FS80 (mm)	FS100 (mm)
(a) Product depth	90	90	90	100	120
(b) Product width	28	46	56	84	124
(c) Minimum element thickness	For FRL up to -/120/120 For FRL up to -/180/180 For FRL up to -/240/240			120 150 170	
(d) Minimum gap width for strip insertion	16	24	32	48	64
Minimum gap width at full compression	12	16	24	36	44
Maximum gap width at full expansion	20	40	50	80	100

NOTE: For joints at the top of hollow block and cavity walls, the cavity must be sealed for a minimum of one course. In 120 minutes framed walls, the FRL can be achieved in joints up to a maximum of 50mm sealed with FS50 type. For situations not covered by the above table, please consult Promat.

Recommended Specification

Where appropriate, the specified joints and gaps on floor/wall should be properly fire stopped using PROMASEAL® FyreStrip capable of providing a fire resistance of -/240/240 when tested and assessed in accordance with AS1530: Part 4 and/or BS476: Part 20: 1987. Installation of any fire stopping product should be carried out according to the manufacturer's recommendations. Please consult Promat for more details.

For latest information of the Promat Asia Pacific organisation, please refer to www.promat-ap.com

ASIA PACIFIC HEADQUARTERS

Promat International (Asia Pacific) Ltd.
Unit 19-02-01, Level 2 PNB Damansara
No.19 Lorong Dungun, Damansara Heights
50490 Kuala Lumpur
MALAYSIA
Tel: +60 (3) 2095 5111
Fax: +60 (3) 2095 6111
Email: info@promat-ap.com

AUSTRALIA

Promat Australia Pty. Ltd.
1 Scotland Road
Mile End South, SA 5031
Tel: 1800 PROMAT (776 628)
Fax: +61 (8) 8352 1014
Email: mail@promat.com.au

New South Wales Office **Promat Australia Pty. Ltd.**

Unit 1, 175 Briens Road
Northmead, NSW 2152
Tel: 1800 PROMAT (776 628)
Fax: +61 (2) 9630 0258
Email: mail@promat.com.au

Victoria Office

Promat Australia Pty. Ltd.
Suite 205, 198 Harbour Esplanade
Docklands, VIC 3008
Tel: 1800 PROMAT (776 628)
Fax: 1800 334 598
Email: mail@promat.com.au

Queensland Office

Promat Australia Pty. Ltd.
Unit 2 Level 1
49 Gregory Tce
Spring Hill, QLD 4000
Tel: 1800 011 376
Fax: 1800 334 598
Email: mail@promat.com.au

CHINA

Promat China Ltd.
Room 503, Block B, Qi Lin Plaza
13-35 Pan Fu Road
510180 Guangzhou
Tel: +86 (20) 8136 1167
Fax: +86 (20) 8136 1372
Email: info@promat.com.cn

Beijing Office

Promat North China
(Division of Promat China Ltd.)
Room 1507 Building 5, SOHO Xiandaicheng
No.88 Jianguo Road, Chaoyang District
100022 Beijing
Tel: +86 (10) 8589 1254
Fax: +86 (10) 8589 2904
Email: info@promat.com.cn

For Promat International groups worldwide:
www.promat-international.com

1. This document is produced on the basis of information and experience available at the time of preparation. Promat is constantly reviewing and updating all of its test data and reserves the right to change products and specifications without notice.
2. Promat is not responsible if recipients of fire test reports, assessments or literature incorrectly interpret said contents and use products based on those interpretations.

HONG KONG

Promat International (Asia Pacific) Ltd.
Room 1010, C.C. Wu Building
302-308 Hennessy Road
Wanchai
Tel: +852 2836 3692
Fax: +852 2834 4313
Email: apromath@promat.com.hk

INDIA

Promat International (Asia Pacific) Ltd.
(India Representative Office)
610-611, Ansal Imperial Tower
C-Block, Community Centre
Naraina Vihar, Naraina
110028 New Delhi
Tel: +91 (11) 2577 8413
Fax: +91 (11) 2577 8414
Email: info-india@promat-asia.com

Bangalore Office

Promat International (Asia Pacific) Ltd.
(India Representative Office)
Cabin No.BC-9 & BC-10
Oculus Workspaces, No.66/1, 2nd Floor
Coles Road, Frazer Town
560005 Bangalore
Tel: +91 (80) 4031 4151
Fax: +91 (80) 4125 2135
Email: info-india@promat-asia.com

Mumbai Office

Promat International (Asia Pacific) Ltd.
(India Representative Office)
Stylus Serviced Offices
Ground Floor, Velocity
Phase 1, Logitech Park
Andheri Kurla Road, Andheri East
400072 Mumbai
Tel: +91 (22) 6769 4567
Fax: +91 (22) 6769 4568
Email: info-india@promat-asia.com

MALAYSIA

Promat (Malaysia) Sdn. Bhd.
Unit 19-02-01, Level 2 PNB Damansara
No.19 Lorong Dungun, Damansara Heights
50490 Kuala Lumpur
Tel: +60 (3) 2095 8555
Fax: +60 (3) 2095 2111
Email: info@promat.com.my

SINGAPORE

Promat Building System Pte. Ltd.
10 Science Park Road, #03-14 The Alpha,
Singapore Science Park II
Singapore 117684
Tel: +65 6776 7635
Fax: +65 6776 7624
Email: info@promat.com.sg

Your local Promat supplier

