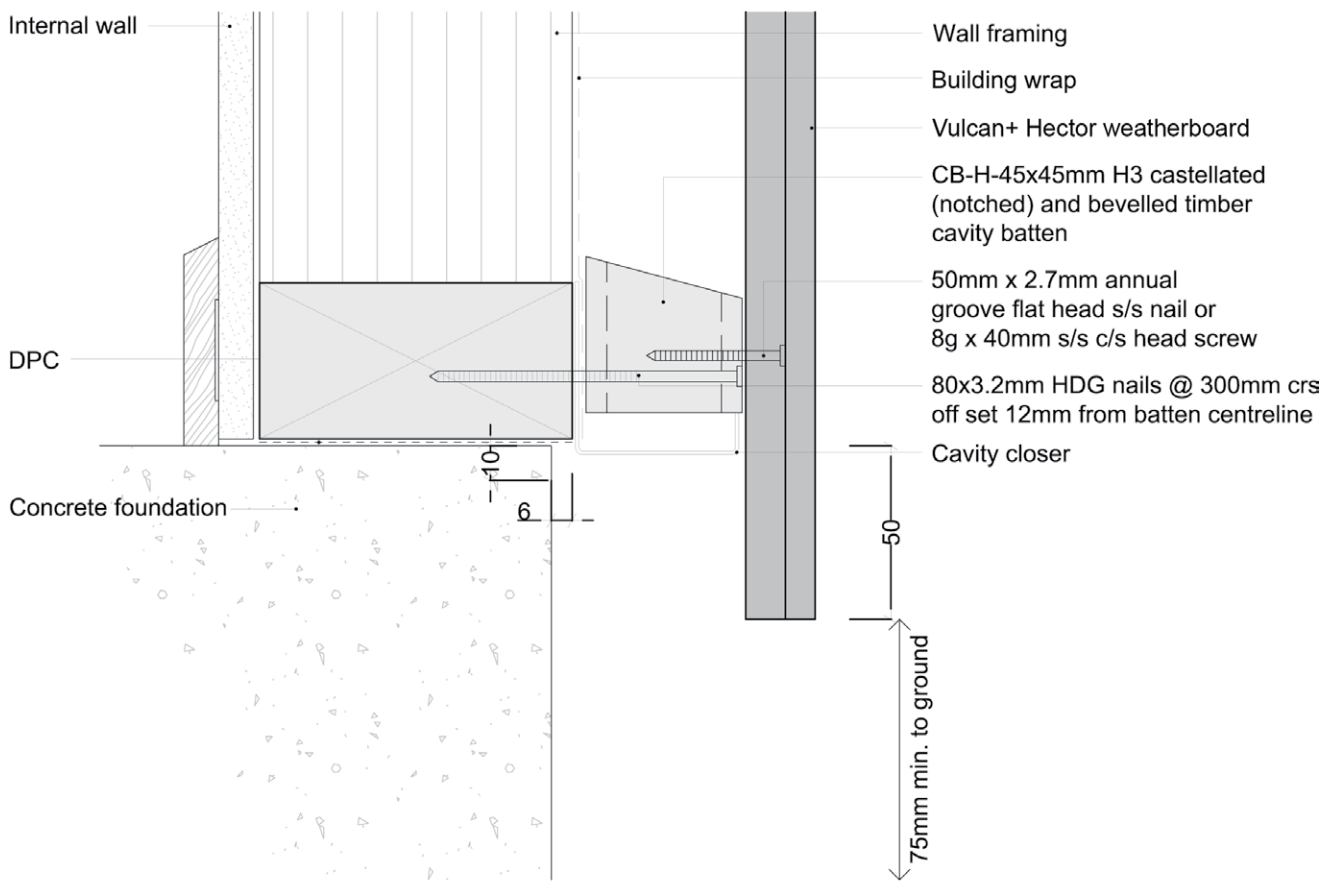


## Vulcan+ Hector Vertical Weatherboard Details Flexible underlay with 45x45 timber batten

HV.C45.F.01	Base Of Wall - Concrete Floor Packer
HV.C45.F.13	Cavity Batten - Stained External 90°
HV.C45.F.24	Corner - AW42 Moulding Internal 90°
HV.C45.F.33	Corner - Flashing Enclosed Deck
HV.C45.F.41	Concrete Substrate
HV.C45.F.55	Weatherboard Join - Birdseye
HV.C45.F.56	Weatherboard Join - Vert
HV.C45.F.57	Apron Flashing
HV.C45.F.58	Roof Kick-out Flashing Cavity Detail
HV.C45.F.61	Top Of Wall - Flat Soffit
HV.C45.F.71	Window Head
HV.C45.F.72	Window Jamb
HV.C45.F.73	Window Sill

1. Weatherboards must be coated with at least one coat all sides prior to fixing.
2. Fixing points must be pre-drilled minimum 1mm smaller than the fastener.
3. Cut ends and exposed timber must be sealed with an approved coating or end seal.



## Vulcan+ Hector Weatherboard

Base of Wall - Concrete Floor

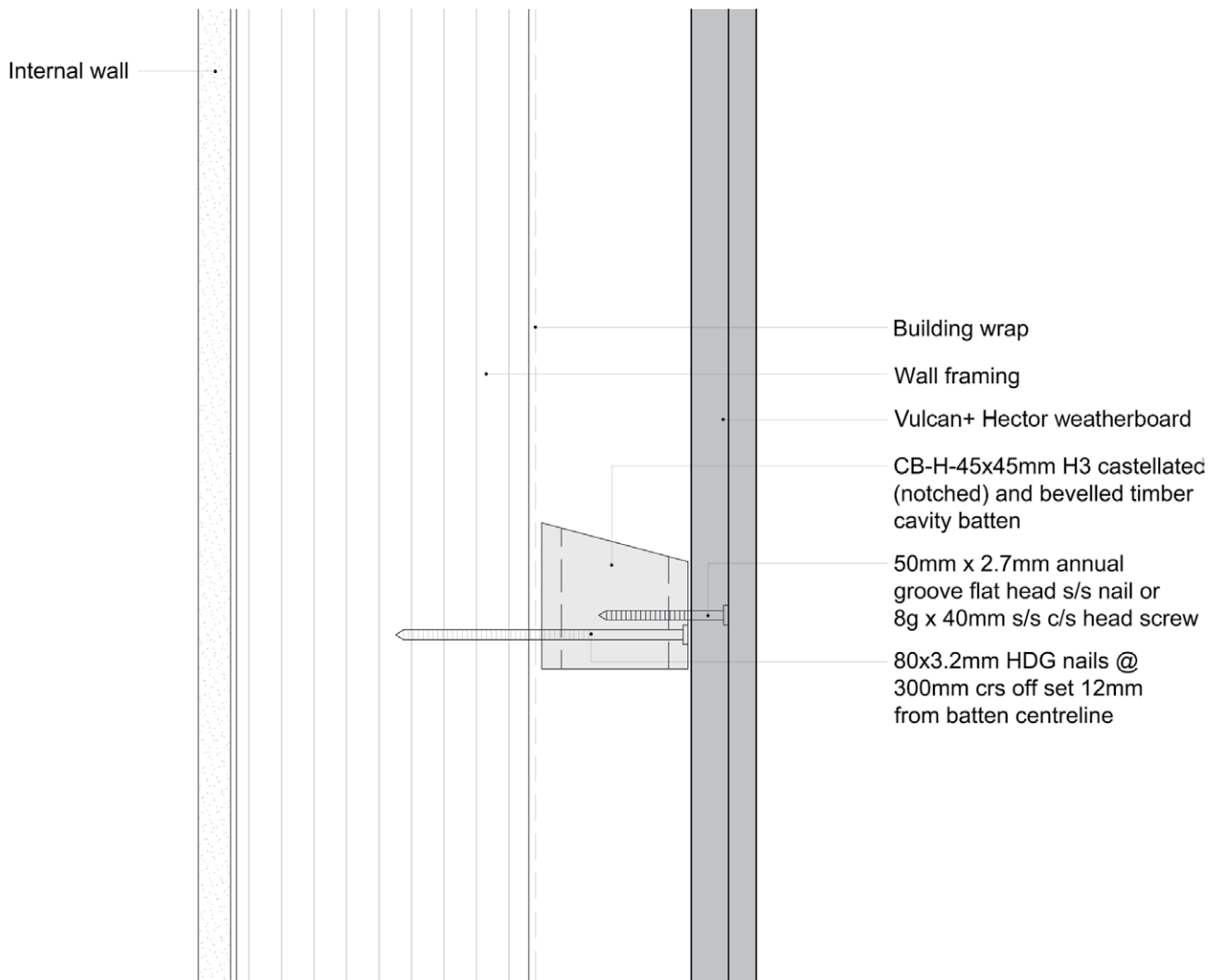
Scale

1:2

Date

03/09/14

1. Weatherboards must be coated with at least one coat all sides prior to fixing.
2. Fixing points must be pre-drilled minimum 1mm smaller than the fastener.
3. Cut ends and exposed timber must be sealed with an approved coating or end seal.



## Vulcan+ Hector Weatherboard

Packer Cavity Batten - Stained

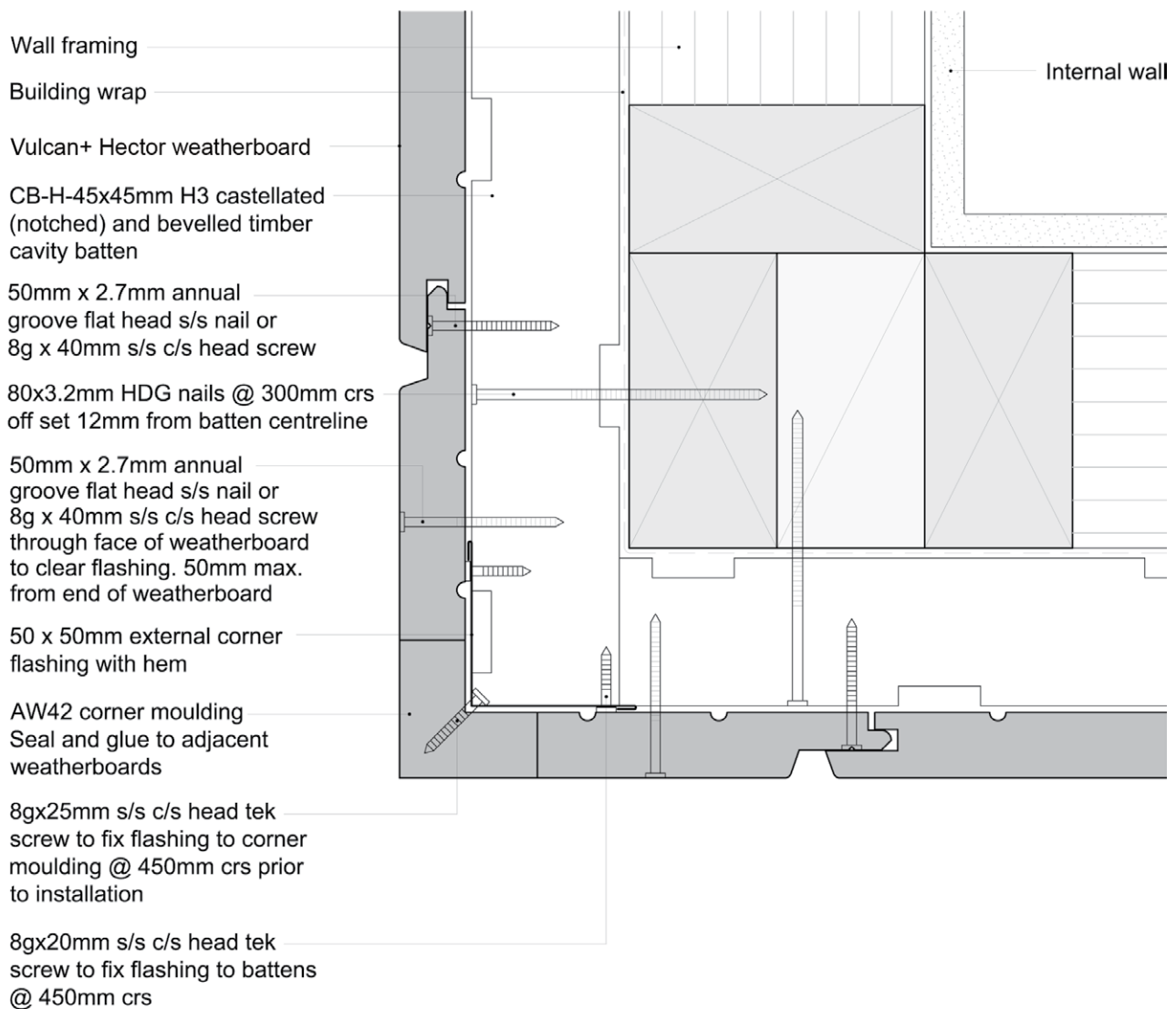
Scale

1:2

Date

03/09/14

1. Weatherboards must be coated with at least one coat all sides prior to fixing.
2. Fixing points must be pre-drilled minimum 1mm smaller than the fastener.
3. Cut ends and exposed timber must be sealed with an approved coating or end seal.



## Vulcan+ Hector Weatherboard

External 90° Corner – AW42 Moulding

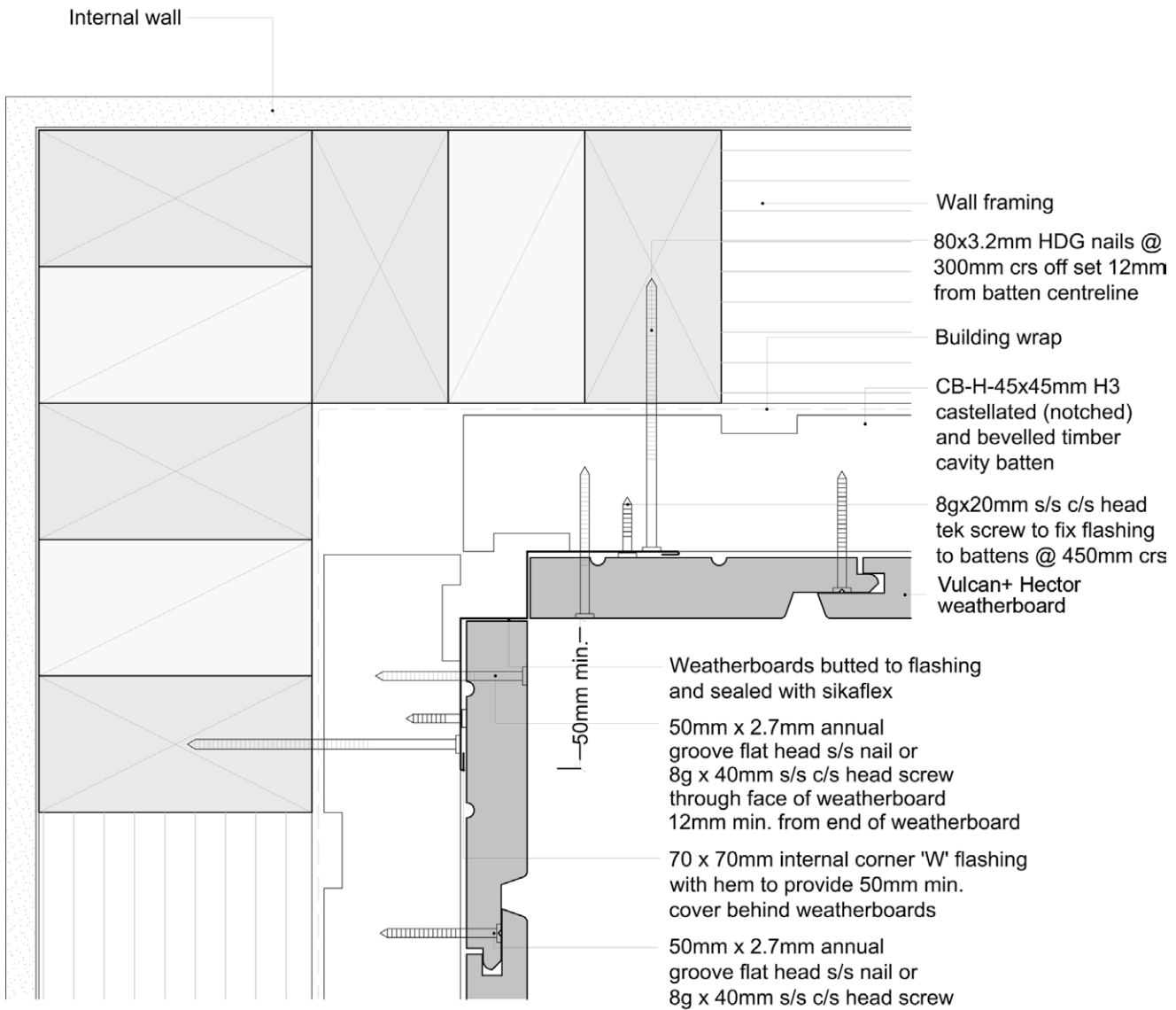
Scale

1:2

Date

03/09/14

1. Weatherboards must be coated with at least one coat all sides prior to fixing.
2. Fixing points must be pre-drilled minimum 1mm smaller than the fastener.
3. Cut ends and exposed timber must be sealed with an approved coating or end seal.



## Vulcan+ Hector Weatherboard

Internal 90° Corner – Flashing

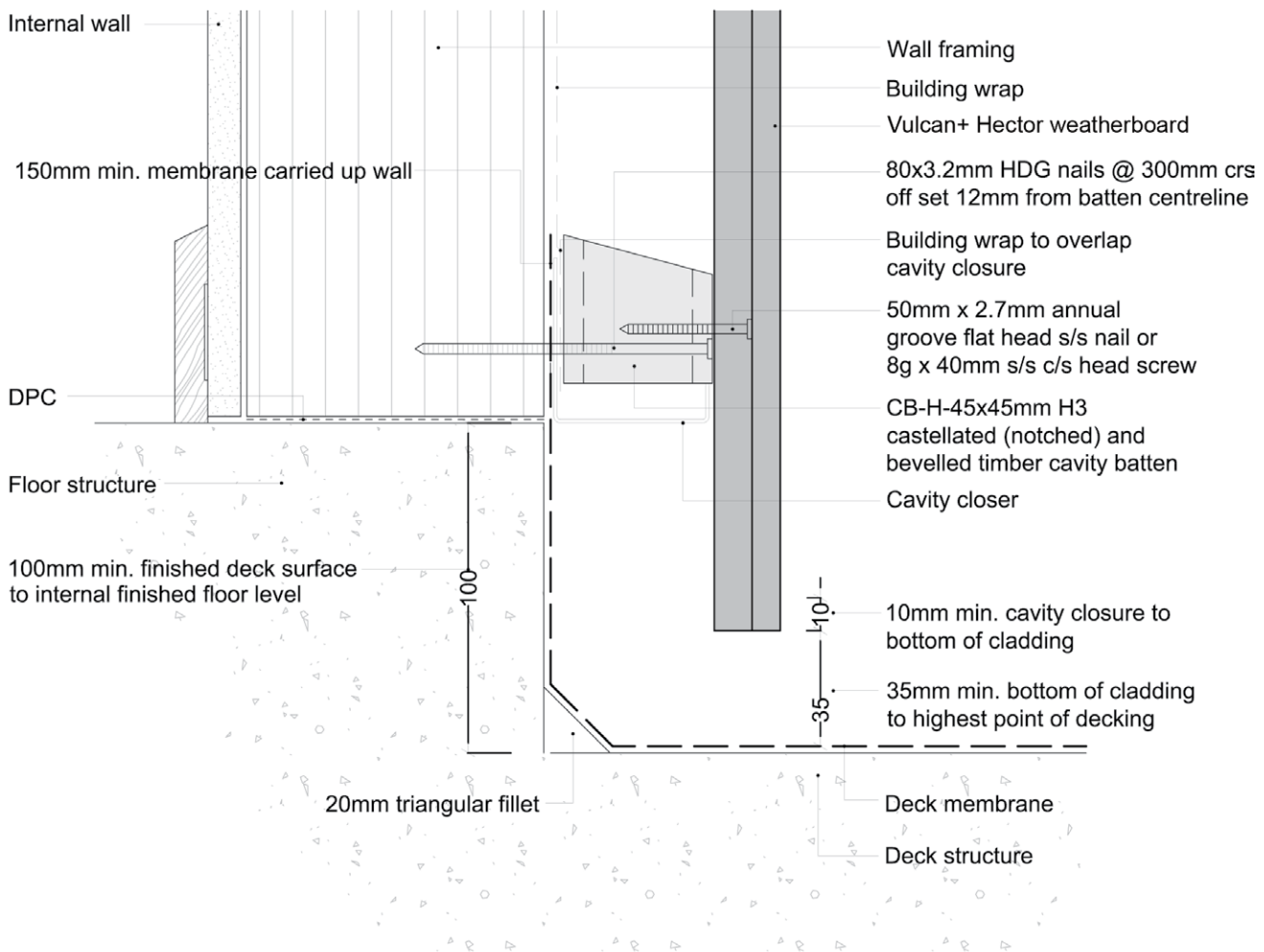
Scale

1:2

Date

03/09/14

1. Weatherboards must be coated with at least one coat all sides prior to fixing.
2. Fixing points must be pre-drilled minimum 1mm smaller than the fastener.
3. Cut ends and exposed timber must be sealed with an approved coating or end seal.



## Vulcan+ Hector Weatherboard

Enclosed Deck - Concrete Substrate

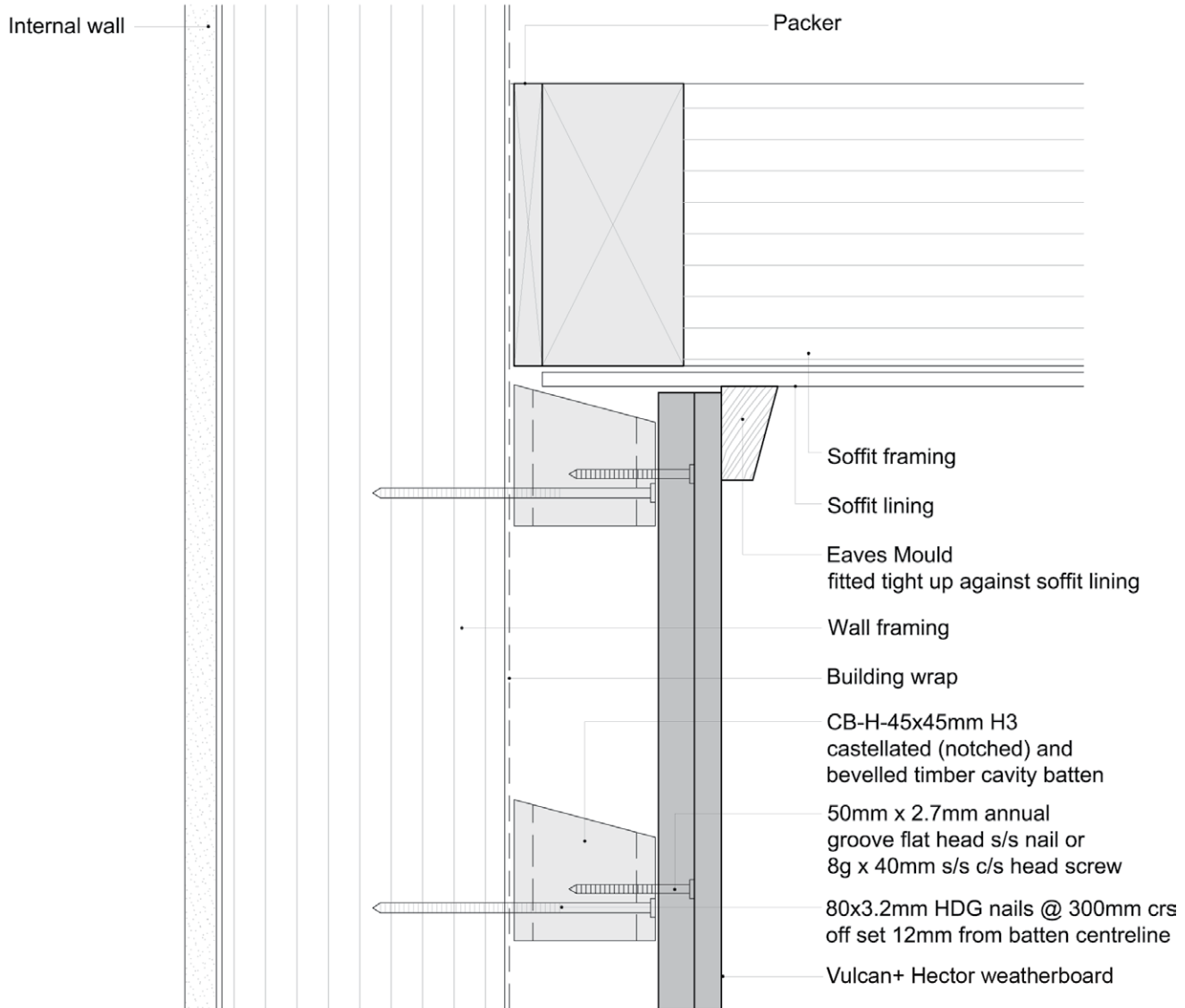
Scale

1:2

Date

03/09/14

1. Weatherboards must be coated with at least one coat all sides prior to fixing.
2. Fixing points must be pre-drilled minimum 1mm smaller than the fastener.
3. Cut ends and exposed timber must be sealed with an approved coating or end seal.



## Vulcan+ Hector Weatherboard

Fixing Detail - Birds Eye View

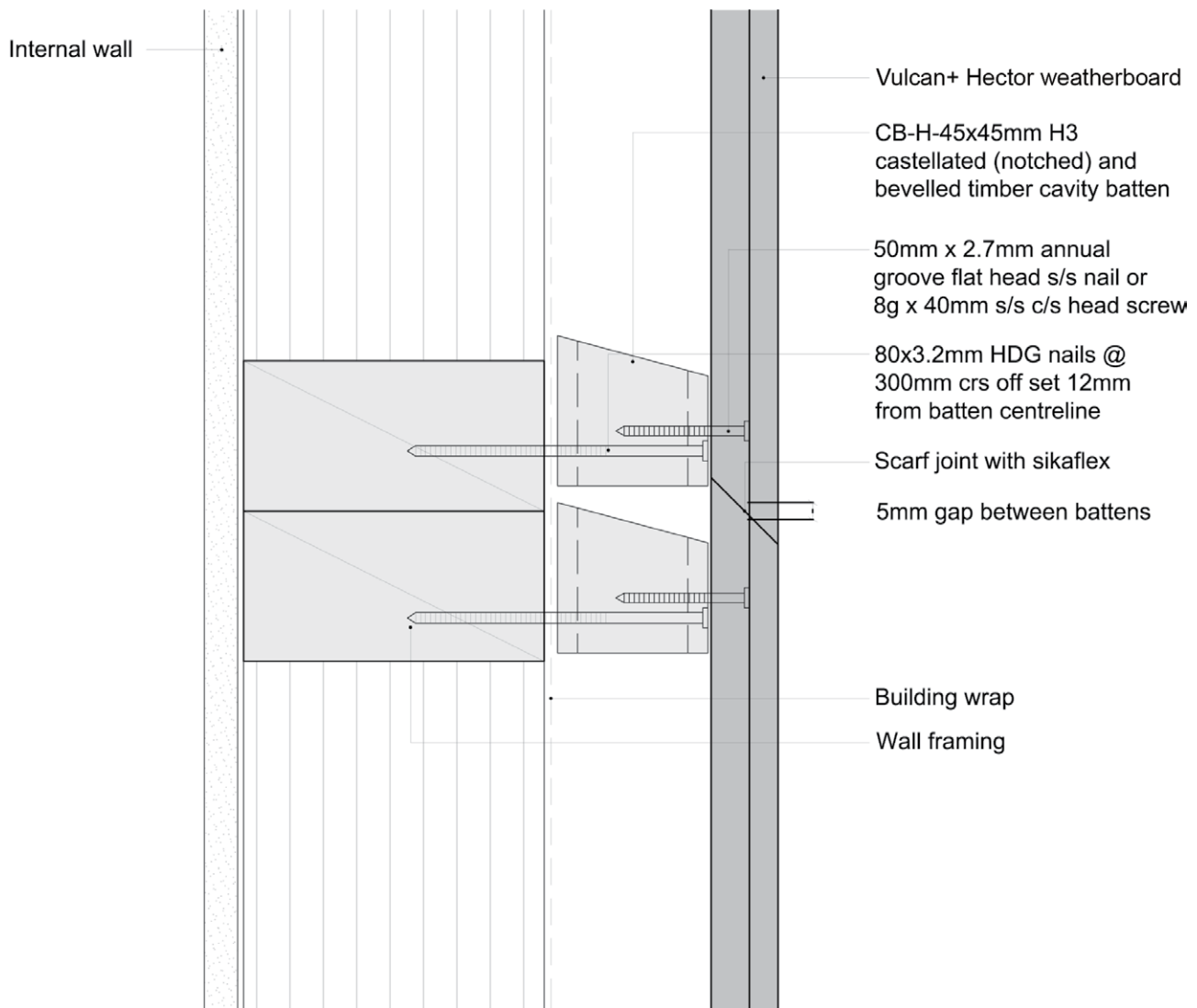
Scale

1:2

Date

03/09/14

1. Weatherboards must be coated with at least one coat all sides prior to fixing.
2. Fixing points must be pre-drilled minimum 1mm smaller than the fastener.
3. Cut ends and exposed timber must be sealed with an approved coating or end seal.



## Vulcan+ Hector Weatherboard

Weatherboard Join - Vertical

Scale

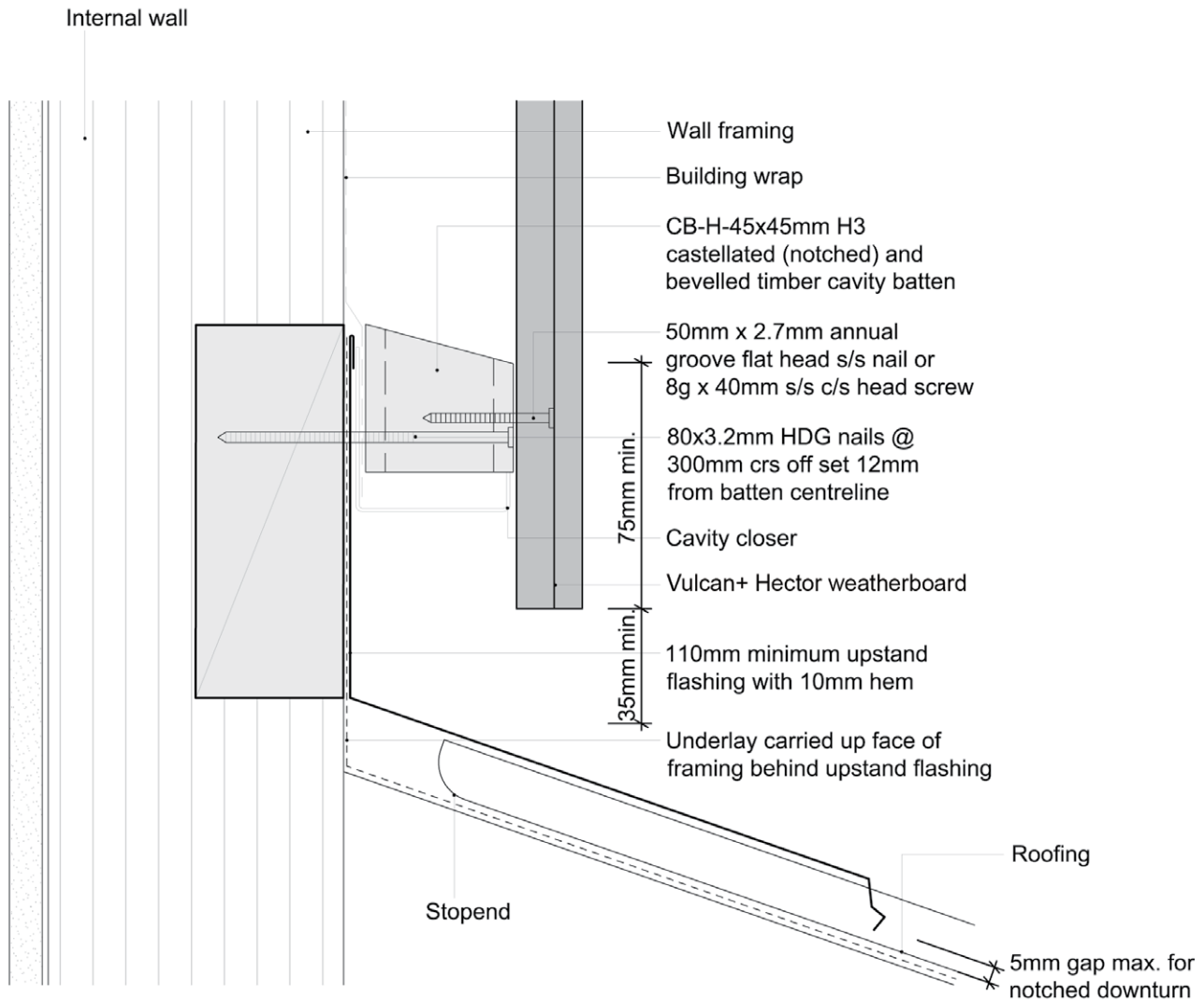
1:2

Date

03/09/14



1. Weatherboards must be coated with at least one coat all sides prior to fixing.
2. Fixing points must be pre-drilled minimum 1mm smaller than the fastener.
3. Cut ends and exposed timber must be sealed with an approved coating or end seal.



Note: refer to NZBC E2/AS1 Table 7 for apron flashing cover over roofing

## Vulcan+ Hector Weatherboard

Apron Flashing

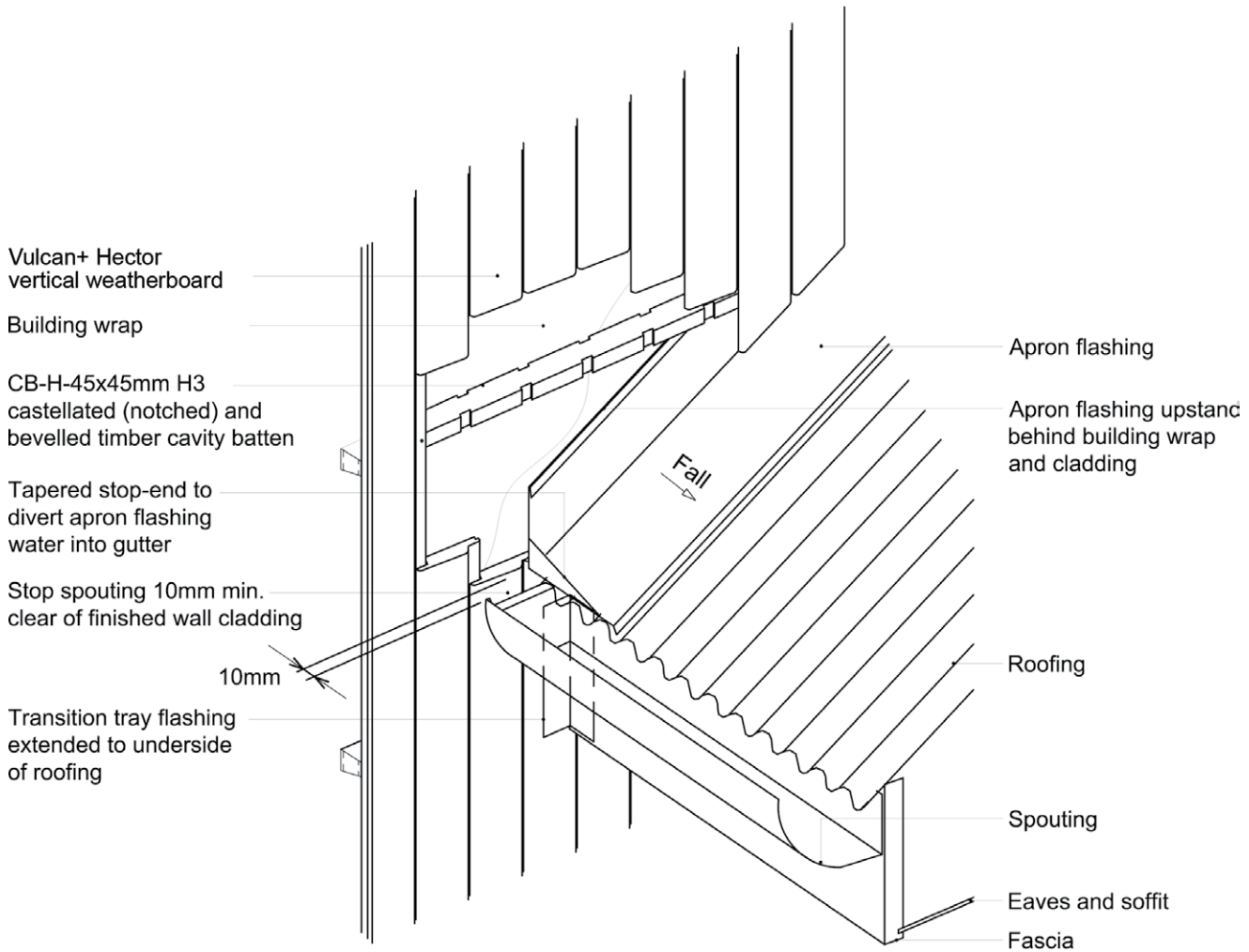
Scale

1:2

Date

03/09/14

1. Weatherboards must be coated with at least one coat all sides prior to fixing.
2. Fixing points must be pre-drilled minimum 1mm smaller than the fastener.
3. Cut ends and exposed timber must be sealed with an approved coating or end seal.



Note: refer to NZBC E2/AS1 Table 7 for apron flashing cover over roofing

## Vulcan+ Hector Weatherboard

Roof Kick-out Flashing Cavity Detail

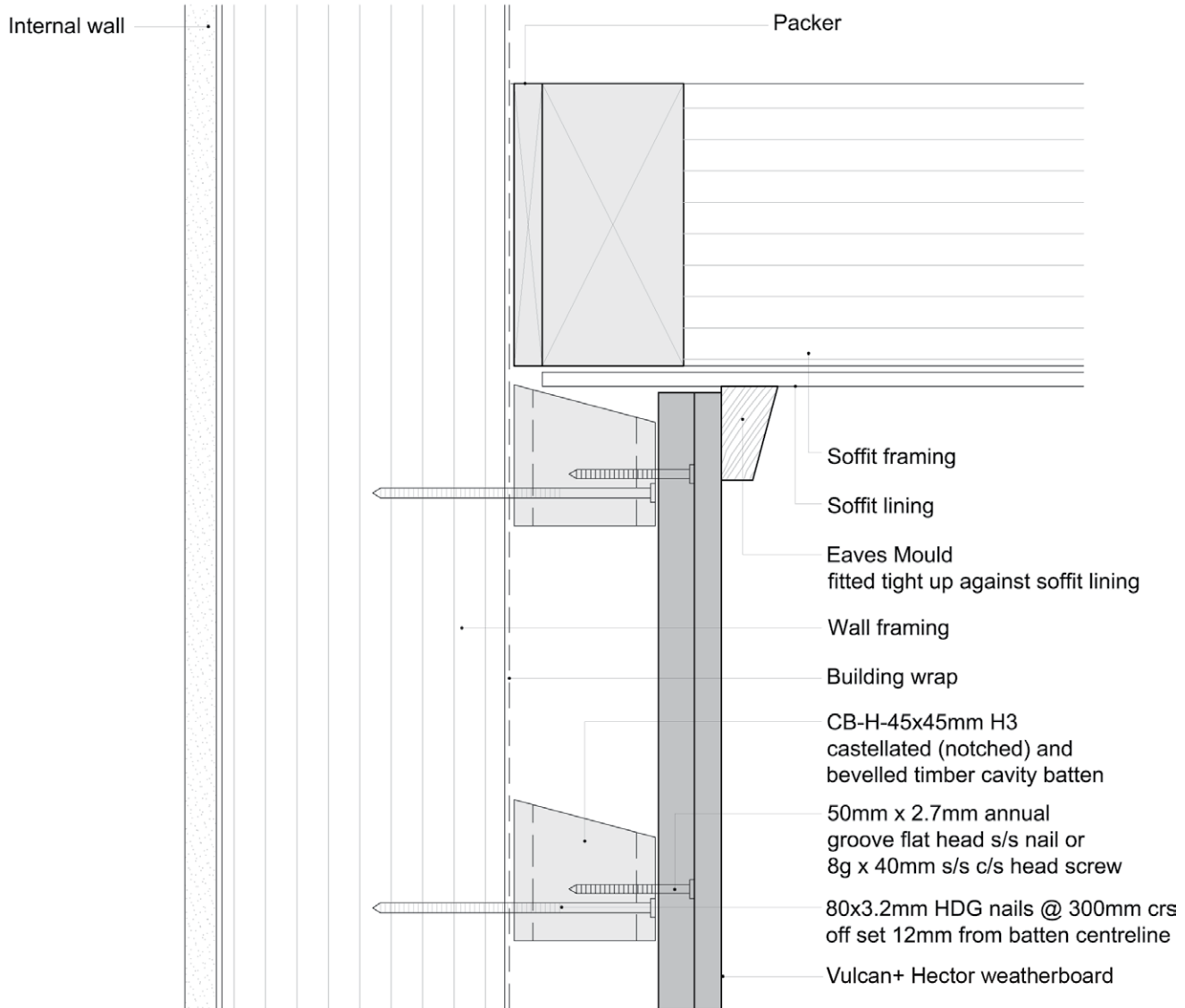
Scale

1:2

Date

03/09/14

1. Weatherboards must be coated with at least one coat all sides prior to fixing.
2. Fixing points must be pre-drilled minimum 1mm smaller than the fastener.
3. Cut ends and exposed timber must be sealed with an approved coating or end seal.



## Vulcan+ Hector Weatherboard

Top of Wall - Flat Soffit

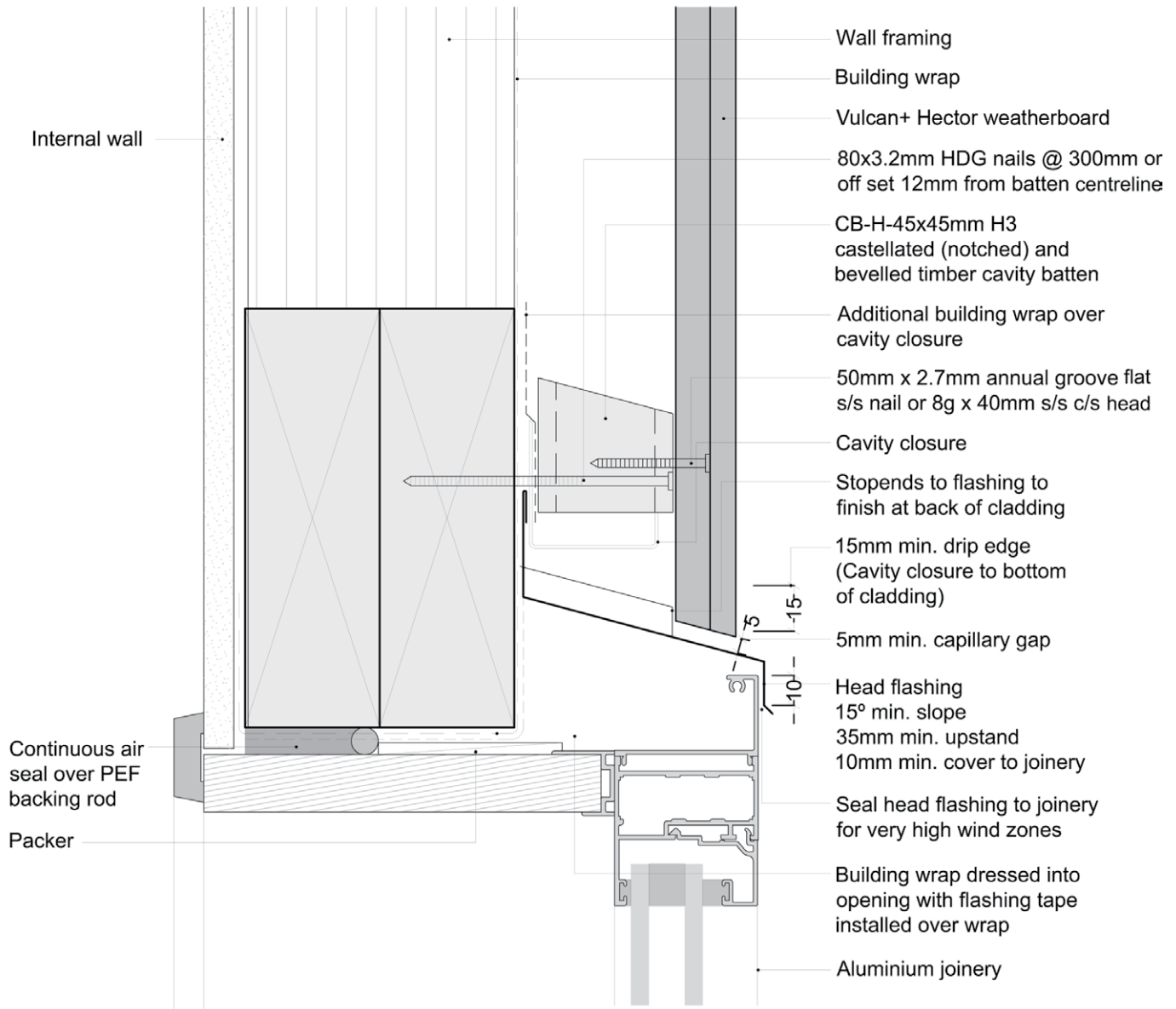
Scale

1:2

Date

03/09/14

1. Weatherboards must be coated with at least one coat all sides prior to fixing.
2. Fixing points must be pre-drilled minimum 1mm smaller than the fastener.
3. Cut ends and exposed timber must be sealed with an approved coating or end seal.



## Vulcan+ Hector Weatherboard

Window Head

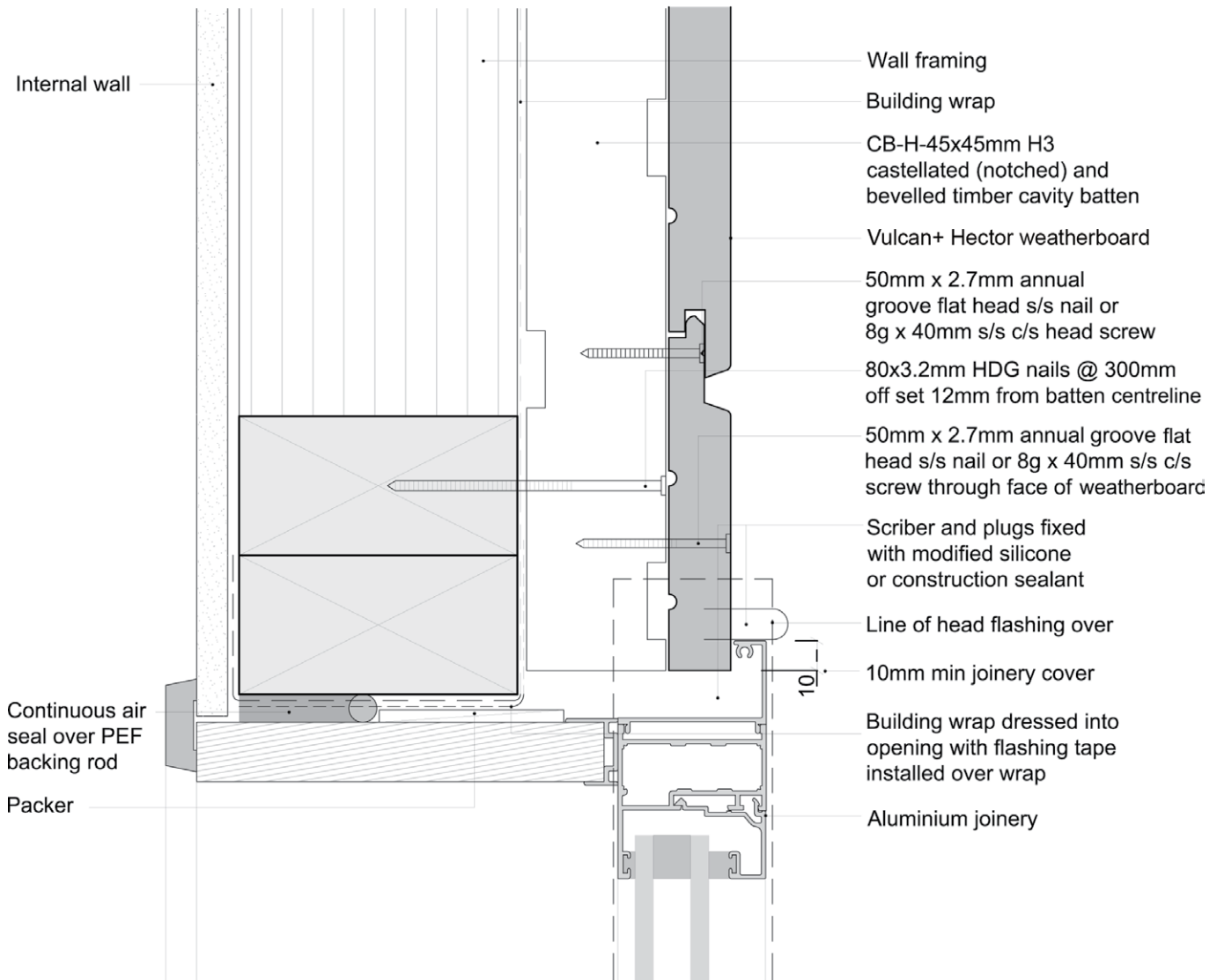
Scale

1:2

Date

03/09/14

1. Weatherboards must be coated with at least one coat all sides prior to fixing.
2. Fixing points must be pre-drilled minimum 1mm smaller than the fastener.
3. Cut ends and exposed timber must be sealed with an approved coating or end seal.



## Vulcan+ Hector Weatherboard

Window Jamb

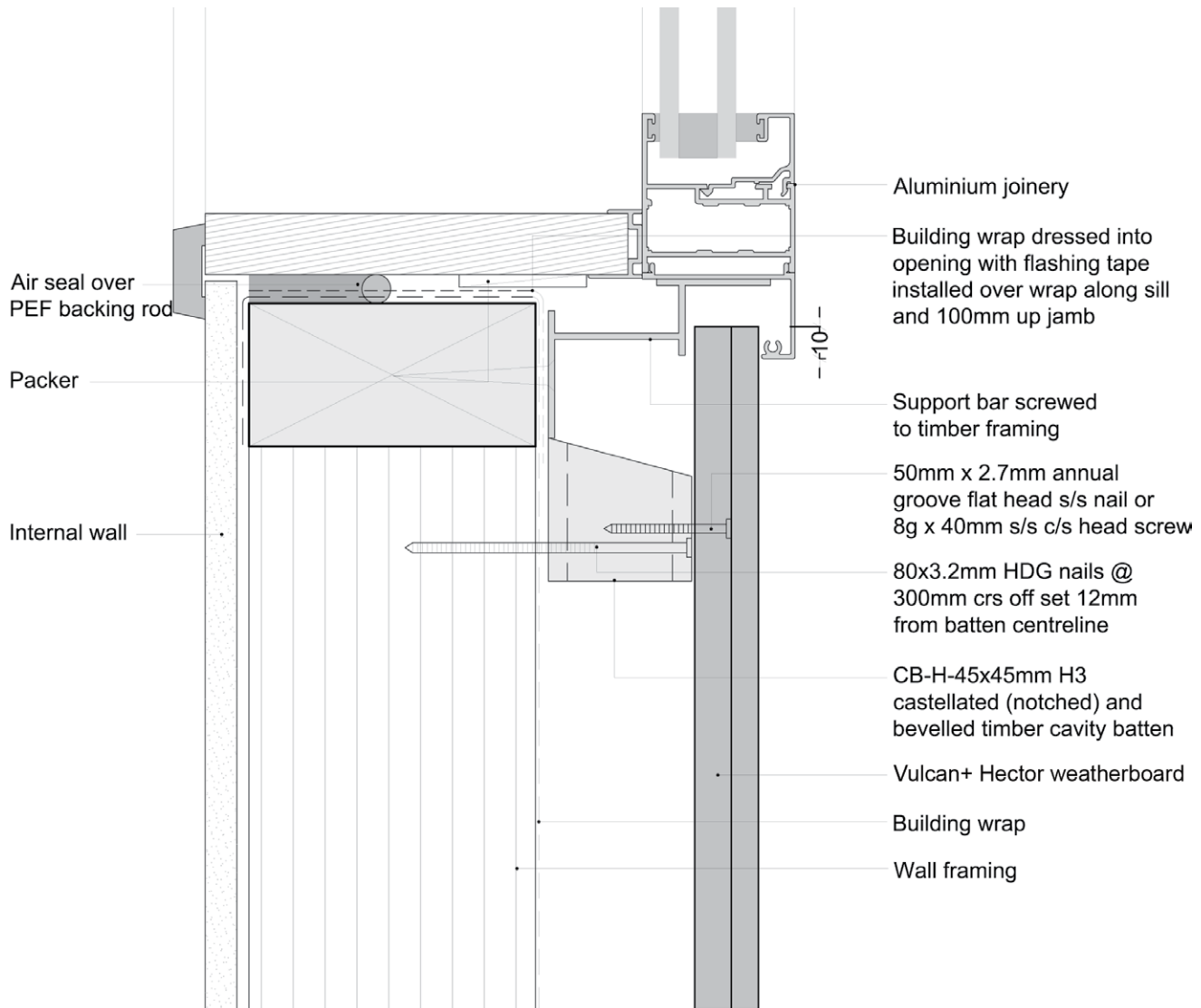
Scale

1:2

Date

03/09/14

1. Weatherboards must be coated with at least one coat all sides prior to fixing.
2. Fixing points must be pre-drilled minimum 1mm smaller than the fastener.
3. Cut ends and exposed timber must be sealed with an approved coating or end seal.



## Vulcan+ Hector Weatherboard

Window Sill

Scale

1:2

Date

03/09/14