



Cleaner, Greener, Lower-Carbon Aluminium for your project.

Introducing LocAl® –
Locally extruded, lower-carbon aluminium.

Aluminium is strong, lightweight and highly recyclable. But did you know that on average it takes 13.9 Kilograms CO₂e to produce 1 Kilogram of primary aluminium?

By choosing lower-carbon aluminium, CO₂e emissions can be significantly reduced, giving you a cleaner, greener choice for your aluminium.

LocAl® Aluminium is locally extruded, lower-carbon aluminium for your projects in construction, engineering, marine, transport, defence, renewable energy or general fabrication industries.

Locally extruded

Extruded in Australia by Capral Aluminium, Australia's largest aluminium extruder established in 1936.

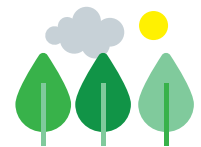
Capral is committed to Net Zero by 2050 and working actively on reducing Scope 1 and Scope 2 emissions.



Low Carbon

Primary billet with certified CO₂e content* at or below:

- 8kg CO₂e/1kg AL - LocAL Green
- 4kg CO₂e/1kg AL - LocAL Super Green



Aluminium

Capral Aluminium has been certified against the ASI Performance Standard V3 and Chain of Custody (CoC) V2 for the extrusion, warehousing and distribution of aluminium products and services.



* Kilograms emitted per kilogram of aluminium produced - Aluminium Smelting and Casting



When you choose LocAl® you are making a cleaner, greener choice for your project, potentially halving the carbon emissions of the aluminium used in your project.



Certified CO2 Content
8kg CO2e/1kg AL or below.
ASI CoC smelter and extruder.



Certified CO2 Content
4kg CO2e/1kg AL or below.
ASI CoC smelter and extruder.

Why Choose LocAl?

The carbon footprint of **LocAl® Green** is meaningfully lower than the global average for primary aluminium production*. **LocAl® Super Green** boasts one of the lowest carbon emissions for primary aluminium currently available.

Reducing carbon emissions from your products is important because it **mitigates the effects of global climate change, improves public health, boosts the global economy, and maintains biodiversity.**

When we cut carbon emissions, we help ensure cleaner air, water, and food for our generation and for generations yet to come.

Choosing to use LocAl® Aluminium as part of a responsible procurement strategy for your business will positively impact your organisation's environmental impact and our climate.

** Kilograms emitted per kilogram of aluminium produced - Aluminium Smelting and Casting*

Find out more about LocAl® and choosing lower-carbon aluminium for your project, visit: lowcarbonaluminium.com.au

Global Average

13.9kg CO2e/1kg Al



8kg CO2e/1kg Al



4kg CO2e/1kg Al



On the path to a better tomorrow.

