

**Commercial
Washroom**



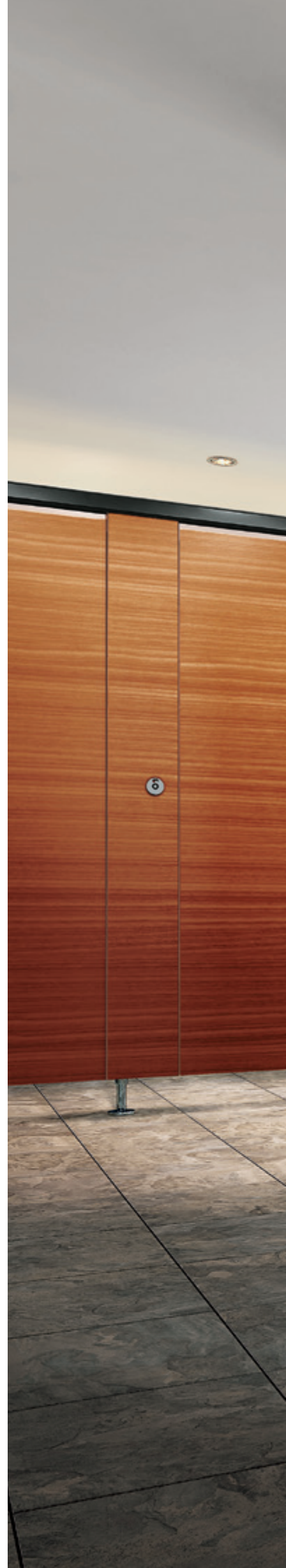
TURN YOUR WASHROOM INTO A SHOWROOM

Welcome to the new ASI JD MacDonald, part of the ASI Group – world leaders in the manufacturer of commercial washroom accessories. So what makes ASI JD MacDonald so unique? For starters, we offer the most comprehensive selection of washroom accessories available anywhere. And we offer them from one source. We design, engineer, and manufacture all of our products to work together seamlessly. Welcome to choice, welcome to innovations, welcome to the new ASI JD MacDonald.

How to use this brochure:

This brochure offers two ways to navigate our comprehensive portfolio of washroom accessories:

- 1 Navigate by collections**—a family of complimentary-designed products, see pages 4 & 5.
- 2 Navigate by specific product category**, see pages 6 & 7.





SEVEN DISTINCT COLLECTIONS TO MATCH ANY AESTHETIC AND PERFORMANCE NEED



P. 8

1 **NEW** **Piatto™** Collection

ASI JD MacDonald's distinctive new collection of washroom accessories is designed to stand apart by not standing out—making it integral with your washroom design. Each washroom accessory is designed to be completely recessed, lying perfectly in the plane of the washroom wall without any protrusion. All hinges are concealed and so is the internal latching system, leaving no visible hardware.



P. 12

3 **Profile™** Collection

This visually appealing collection with rounded edges is manufactured with highly durable 16 gauge stainless steel doors and 20 gauge cabinets. Concealed heavy-duty 5mm diameter piano hinges ensure smooth and long-lived operation, and rimless keyed-alike flush tumbler locks offer strong security with an elegant look.



P. 13

3 **Roval™** Collection

This elegant, durable, and exceptionally functional collection is engineered for high-profile settings. Subtle curves, one-piece seamless doors, and flush tumbler locks, along with fully removable waste cans, strong hinges, and integral locking system, and easy installation, make this collection ideal for the most aesthetically demanding applications.



P. 14

4 **Simplicity™** Collection

This elegant collection combines seamless construction and crisp design lines to provide strength and comfort, beauty and durability, form and function. 18 gauge doors and 20 gauge cabinets conceal heavy-duty 5mm diameter piano hinges. All units are keyed alike.



P. 16

5 **Traditional™** Collection

The traditional collection has easily passed the test of time. These high-value products feature 22 gauge double-pan doors incorporating a "no-flex" structural fiberboard core. 22 gauge cabinets, heavy-duty 5mm diameter piano hinges, and keyed-alike tumbler locks complete this broad product line.



P. 17

5 **Select Classic** Collection

The Select Classic collection is a triumph of style and function. Manufactured with durable 20 gauge cabinets, 18 gauge doors and 5mm diameter heavy-duty piano hinges. Offering uninterrupted clean lines, these stylish units will remain a feature of any washroom design for years to come.



P. 22

2 **NEW Velare™** Collection

An elegant space-saving solution, designed to tuck away clutter, this wall mounted stainless steel cabinet conceals an automatic soap dispenser, and your choice of a paper towel dispenser or high-speed hand dryer. The sophisticated design is ideal for iconic buildings—the dispensing capacity makes it ideal for any high-traffic environment. Another reason to specify ASI JD MacDonald.

While ASI JD MacDonald offers hundreds of individual accessories, we have simplified the specifying process with our seven distinct collections to serve your project's individual needs.

And each of our seven collections was designed as a suite of products that complement one another. Welcome to aesthetics and function in perfect harmony. Welcome to the new ASI JD MacDonald.

WELCOME TO THE SINGLE LARGEST COLLECTION OF WASHROOM ACCESSORIES ANYWHERE—BAR NONE

Why mix and match disparate washroom accessory products from different manufacturers, when our company has designed, engineered, and manufactured everything you need from one source? Welcome to integrated solutions. Welcome to the new ASI JD MacDonald.



P. 8

Piatto™ Combination Units



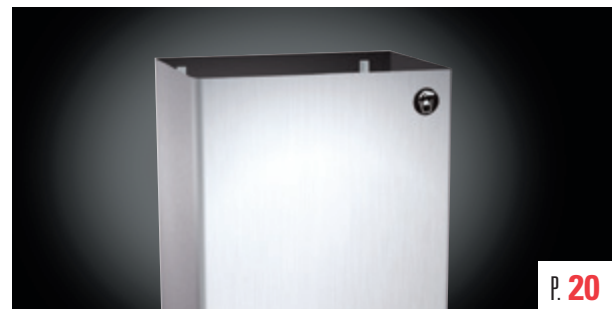
P. 8

Combination Units



P. 18

Paper Towel Dispensers



P. 20

Waste Bins



P. 21

Feminine Disposals



P. 22

Behind Mirror Cabinets



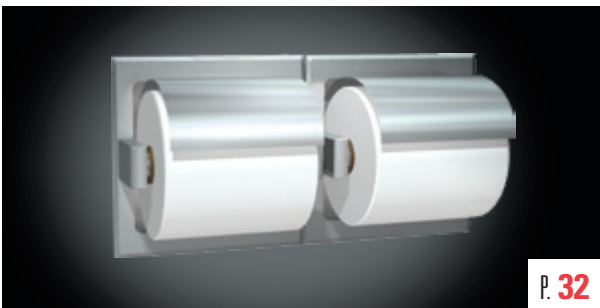
P. 26

Soap Dispensers



P. 28

Hand Sanitiser Dispensers



P. 32

Toilet Paper Dispensers



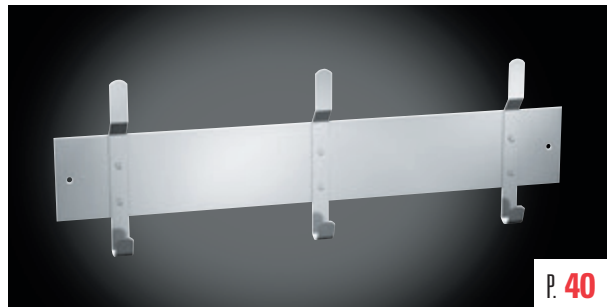
P. 38

Specialty Accessories



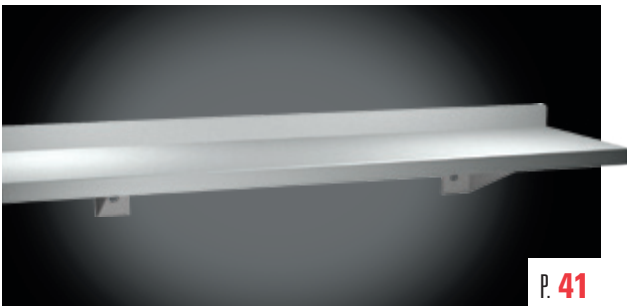
P. 39

Hooks



P. 40

Custodial Accessories



P. 41

Shelves



P. 42

Mirrors

SHOWN: 10-6462-41
PAPER TOWEL
DISPENSER AND
WASTE RECEPTACLE



NEW

Piatto™ Collection

ASI JD MacDonald's distinctive new collection of washroom accessories is designed to stand apart by not standing out — making it integral with your washroom design. Each washroom accessory is designed to be completely recessed, lying perfectly in the plane of the

washroom wall without any protrusion. The high-end door hinges, used to achieve this precise coplanar fit, are easily adjusted in the field. 13mm Phenolic doors in matte black or white, close silently and effortlessly, and add an air of sophistication.

WHAT MAKES THE PIATTO™ COLLECTION UNIQUE?

Completely
RECESSED

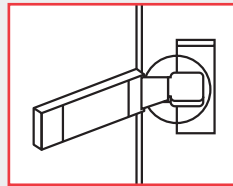
UNIQUE DESIGN

The Piatto™ collection is designed to be coplanar to the wall - an ASI JD MacDonald exclusive.

PHENOLIC
Doors

ELEVATED STYLE— A NEW CHOICE

Phenolic doors in matte black or white were created to accentuate your washroom design.



INNOVATED HINGES

3-way, adjustable hinges allow flexibility in the field and are concealed along with all other hardware.

Virtually
GAPLESS
Fit

STAND APART BY BLENDING IN

A combination of technology and design ensures a perfect fit adding to your design by not detracting from it.

PIATTO™ COLLECTION



THREE WAY ADJUSTABLE HINGE

An innovative hinge technology allows cabinet and doors to be completely recessed, with no protrusions from the plane of the wall surface. Doors can be adjusted in the field.

- Phenolic Doors
- Completely Recessed Mounting
- Concealed Internal Spring-Loaded Latch
- No Visible Hardware



10-64623 PAPER TOWEL DISPENSER AND WASTE RECEPTACLE (PIATTO™)

This unit comes with a phenolic door and concealed hardware, and is designed to be *completely* recessed into the plane of the washroom wall. Well-suited for the smaller washroom with less space and traffic. Dispenses 350 C-fold or 475 multi-fold paper towels. Includes 8.4L stainless steel waste receptacle. For matte black phenolic door use suffix -41, for white use -00.

Unit Size:
362 x 711 x 116 mm

Finished Wall Opening*:
364 x 713 x 119 mm



10-6462 PAPER TOWEL DISPENSER AND WASTE RECEPTACLE (PIATTO™)

This unit comes with a phenolic door and concealed hardware, and is designed to be *completely* recessed into the plane of the washroom wall. Dispenses 600 C-fold, 800 multi-fold, or 1,100 single-fold towels. 34L stainless steel waste receptacle. Towel dispensing slot has hemmed-in rolled edge for snag-free dispensing and user safety. For matte black phenolic door use suffix -41, for white use -00.

Unit Size:
438 x 1372 x 166 mm

Finished Wall Opening*:
440 x 1373 170 mm

All stainless steel is type 304 with satin finish, unless otherwise stated.

**All Piatto™ models require finished wall openings for installation. The edges of the finished wall opening are meant to be visible after installation, hence edges must be flat, square, straight, and plumb – no rough or unsightly edges.*

COMBINATION UNITS - PIATTO™ COLLECTION



10-6467 PAPER TOWEL DISPENSER AND WASTE RECEPTACLE (PIATTO™)

This unit comes with a phenolic door and concealed hardware, and is designed to be *completely* recessed into the plane of the washroom wall. Dispenses 600 C-fold or 800 multi-fold paper towels. Towel dispensing slot has hemmed-in rolled edge for snag-free dispensing and user safety, includes 16L stainless steel waste receptacle. For matte black phenolic door use suffix -41, for white use -00.

Unit Size:
330 x 1397 x 116 mm

Finished Wall Opening*:
332 x 1399 x 119 mm



10-64672-2 COMPLETELY RECESSED 3-IN-1 PAPER TOWEL DISPENSER, HIGH SPEED HAND DRYER AND WASTE RECEPTACLE (PIATTO™)

This unit comes with a phenolic door and concealed hardware, and is designed to be *completely* recessed into the plane of the washroom wall. Features a <15 second automatic hand dryer, dispenses 400 standard C-fold or 500 standard multi-fold paper towels with a waste capacity of 26L. Dryer has 5-year warranty. For matte black phenolic door use suffix -41, for white use -00.

Unit Size:
391 x 1407 x 191 mm

Finished Wall Opening*:
392 x 1408 x 194 mm

Decibel Level: 60.5 - 67.2 dB-A @2M

COMBINATION UNITS - PROFILE COLLECTION



10-94623 RECESSED PAPER TOWEL DISPENSER AND WASTE RECEPTACLE (PROFILE)

Dispenses 350 C-fold or 475 multi-fold paper towels and has a built-in 7.6 L stainless steel waste receptacle. Door made of 16 gauge stainless steel attached to 20 gauge stainless steel cabinet with concealed 5 mm (diam) multi-staked piano hinge to handle heavy use. Rimless tumbler locks are keyed alike. Satin finish.

Overall Dimensions:
362 x 711 x 125 mm

Wall Opening:
324 x 673 x 108 mm



10-9469 RECESSED PAPER TOWEL DISPENSER AND WASTE RECEPTACLE (PROFILE)

Dispenses 600 C-fold or 800 multi-fold paper towels. 49 L waste receptacle. Door made of 16 gauge stainless steel and held closed with a rimless tumbler lock, attached to 22 gauge stainless steel cabinet with concealed 5 mm (diam) multi-staked piano hinge to handle heavy use. Satin finish.

Overall Dimensions:
438 x 1422 x 132 mm

Wall Opening:
400 x 1384 x 102 mm

COMBINATION UNITS - ROVAL™ COLLECTION



10-204623 RECESSED PAPER TOWEL DISPENSER AND WASTE RECEPTACLE (ROVAL™)

Dispenses 350 C-fold or 475 multi-fold paper towels. 11.2 L waste receptacle with a tumbler lock and internal bag hooks. Unit is 22 gauge. Door has a flush, rimless tumbler lock and heavy-duty 3.5 mm (diam) multi-staked piano hinge. Satin finish.

Overall Dimensions:

325 x 710 x 168 mm

Wall Opening:

286 x 672 x 100 mm

MODEL OPTION:

10-204623-9 Surface mounted with stainless steel trim.



10-20469 RECESSED PAPER TOWEL DISPENSER AND WASTE RECEPTACLE (ROVAL™)

Dispenses 600 C-fold or 800 multi-fold paper towels. 56 L waste receptacle is provided with a tumbler lock and internal bag hooks. Door is 18 gauge stainless steel and has a flush, rimless tumbler lock and 3.1 mm (diam) multi-staked piano hinge. Cabinet is 22 gauge stainless steel. Satin finish.

Overall Dimensions:

441 x 1424 x 228 mm

Wall Opening:

397 x 1381 x 102 mm

MODEL OPTION:

10-20469-9 Surface mounted with stainless steel trim.



10-64623 RECESSED PAPER TOWEL DISPENSER AND WASTE RECEPTACLE (SIMPLICITY)

Dispenses 350 C-fold or 475 multi-fold paper towels. 8.4 L stainless steel waste receptacle. Door made of 18 gauge stainless steel attached to 20 gauge stainless steel cabinet with 5 mm diameter multi-staked piano hinge. Tumbler locks are keyed alike. Satin finish.

Overall Dimensions:
362 x 711 x 121 mm

Wall Opening:
324 x 673 x 108 mm

MODEL OPTION:

10-64623-9 Surface mounted with stainless steel trim.



10-6462 RECESSED PAPER TOWEL DISPENSER AND WASTE RECEPTACLE (SIMPLICITY)

Dispenses 600 C-fold, 800 multi-fold or 1,100 standard single-fold paper towels. 34 L stainless steel waste receptacle. Door made of 18 gauge stainless steel attached to 20 gauge stainless steel cabinet with 5 mm (diam) multi-staked piano hinge. Tumbler locks are keyed alike. Satin finish.

Overall Dimensions:
438 x 1372 x 165 mm

Wall Opening:
400 x 1335 x 152 mm

MODEL OPTION:

10-6462-9 Surface mounted with stainless steel trim.

COMBINATION UNITS - SIMPLICITY COLLECTION



10-6467 RECESSED PAPER TOWEL DISPENSER AND WASTE RECEPTACLE (SIMPLICITY)

Dispenses 600 C-fold or 800 multi-fold paper towels. 16 L stainless steel waste receptacle. Door made of 18 gauge stainless steel attached to 20 gauge stainless steel cabinet with 5 mm (diam) multi-staked piano hinge. Tumbler locks are keyed alike. Satin finish.

Overall Dimensions:
330 x 1397 x 121 mm

Wall Opening:
292 x 1359 x 102 mm

MODEL OPTION:
10-6467-9 Surface mounted with stainless steel trim.



10-64676 RECESSED PAPER TOWEL DISPENSER AND WASTE RECEPTACLE (SIMPLICITY)

Dispenses 600 C-Fold, 800 multi-fold or 1100 single-fold towels. 26.5 L. waste receptacle with a spring-loaded door. Door made of 18 gauge stainless steel attached to 20 gauge stainless steel cabinet with 5 mm diameter multi-staked piano hinge. Tumbler locks are keyed alike. Satin finish.

Overall Dimensions:
330 x 1397 x 165 mm

Wall Opening:
292 x 1359 x 152 mm

MODEL OPTION:
10-64676-9 Surface mounted with stainless steel.



10-64672-2 RECESSED PAPER TOWEL DISPENSER, HAND DRYER AND WASTE RECEPTACLE (SIMPLICITY)

Dispenses 400 C-Fold or 500 multi-fold paper towels. 26 L. waste receptacle. Door made of 18 gauge stainless steel attached to 20 gauge stainless steel cabinet with 5 mm diameter multi-staked piano hinge. Tumbler locks are keyed alike. Satin finish.

Overall Dimensions:
391 x 1407 x 191 mm

Wall Opening:
358 x 1381 x 184 mm



10-1001 COUNTER TOP MOUNTED PAPER TOWEL DISPENSER AND WASTE RECEPTACLE (TRADITIONAL)

Dispenses 1 pack (200) C-fold paper towels. Unit is 22 gauge and is provided with a 28 L waste receptacle, to be placed directly below waste door. Downward finger pressure will open pivoting waste door for disposal of used paper towel and waste door returns to closed position when pressure is removed. Satin finish.

Overall Dimensions:
362 x 381 x 295 mm

Counter Opening:
318 x 343 mm



10-0462-AD RECESSED PAPER TOWEL DISPENSER AND WASTE RECEPTACLE (TRADITIONAL)

Dispenses 350 C-fold or 475 multi-fold paper towels. 7.6 L waste receptacle. Door and cabinet made of 22 gauge stainless steel attached with a 5 mm (diam) multi-staked piano hinge held closed with a tumbler lock. Satin finish.

Overall Dimensions:
362 x 711 x 108 mm

Wall Opening:
324 x 673 x 102 mm

MODEL OPTION:
10-0462-AD-9 Surface mounted with stainless steel trim.



NEW 10-4004 UNDER VANITY PAPER TOWEL DISPENSER AND WASTE RECEPTACLE (TRADITIONAL)

Dispenses 300 C-fold or 475 multi-fold paper towels and has a waste capacity of 38 L. Cabinet made of 20 gauge stainless steel. Waste disposal door is spring loaded to remain shut. Satin finish.

Overall Dimensions:
443 x 610 x 367 mm

Exposed Cabinet Size:
343 x 610 x 318 mm

COMBINATION UNITS - TRADITIONAL & SELECT CLASSIC COLLECTIONS



10-0469 RECESSED PAPER TOWEL DISPENSER AND WASTE RECEPTACLE (TRADITIONAL)

Dispenses 600 C-fold or 800 multi-fold paper towels and has a waste capacity of 46 L. Door and cabinet made of 22 gauge stainless steel attached with a 5 mm (diam) multi-staked piano hinge held closed with a tumbler lock. Satin finish.

Overall Dimensions:
438 x 1422 x 210 mm

Wall Opening:
400 x 1384 x 102 mm

MODEL OPTION:
10-0469-9 Surface mounted with stainless steel trim.



10-0467 RECESSED PAPER TOWEL DISPENSER AND WASTE RECEPTACLE (TRADITIONAL)

Dispenses 600 C-fold, 800 multi-fold or 1100 single-fold paper towels and has a waste capacity of 26 L. Doors and cabinet made of 22 gauge stainless steel and attached with 5 mm (diam) multi-staked piano hinges held closed with tumbler locks. Satin finish.

Overall Dimensions:
330 x 1397 x 165 mm

Wall Opening:
292 x 1359 x 159 mm

MODEL OPTION:
10-0467-9 Surface mounted with stainless steel trim.



10-64671-A SEMI-RECESSED PAPER TOWEL DISPENSER AND WASTE RECEPTACLE (SELECT CLASSIC)

Dispenses 400 C-fold or 500 multi-fold paper towels and has a waste capacity of 26 L. Door made of 18 gauge stainless steel attached to 20 gauge stainless steel cabinet with 5 mm (diam) multi-staked piano hinge. Tumbler lock hidden from view inside lower window.

Overall Dimensions:
440 x 1515 x 202 mm

Wall Opening:
408 x 1494 x 127 mm

OPTIONS:
10-764671-SR2 Small cavity trim kit.
10-764671-SM Surface mount trim kit.



Paper Towel Dispensers

With an extensive portfolio of paper towel dispensers, ASI JD MacDonald can provide whatever you need to promote the neat and orderly use of your facilities. These designs reflect our attention to detail for functionality, durability and easy maintenance.

SHOWN: 10-0210



 **10-8165 ROLL PAPER TOWEL DISPENSER (TRADITIONAL)**

Holds standard paper towel roll up to 152 mm diameter. Heavy-duty aluminum casting with satin-matte, silver-grey finish. Designed for controlled delivery of towels and its concealed locking device on molded plastic spindle prevents theft.

Overall Dimensions:
330 x 44 x 102 mm



10-1002 VANITY TOP MOUNTED PAPER TOWEL DISPENSER (TRADITIONAL)

Holds 200 C-fold (1 pack) paper towels for loading by pushing downward through hinged dispensing flaps. Satin finish.

Overall Dimensions: Counter Opening:
362 x 152 x 295 mm 318 x 108 mm

MODEL OPTION:
10-1002-M Suitable for backsplash or vanity apron installation.



 **JDM-ROLL-DISP ROLL PAPER TOWEL DISPENSER**

Fabricated of mild steel and powder coated to a brilliant white finish. Dispenses all standard core roll paper towels up to 190 mm wide.

Overall Dimensions:
222 x 282 x 178 mm




 **10-0245-SS PAPER TOWEL DISPENSER (TRADITIONAL)**

Entirely fabricated of 22 gauge stainless steel. This unit dispenses 400 single-fold paper towels. Door is provided with a refill view indicator and is held closed with a tumbler lock. Satin finish.

Overall Dimensions:
285 x 160 x 143 mm



 **10-0215 PAPER TOWEL DISPENSER—PETITE (TRADITIONAL)**

Same as 0210 but reduced capacity to dispense 200 C-fold or 275 multi-fold paper towels. Fabricated of 22 gauge stainless steel, with refill viewer slots on both sides. Well-suited for low traffic areas. Satin finish.

Overall Dimensions:
279 x 203 x 102 mm

PAPER TOWEL DISPENSERS



10-0212-41 PAPER TOWEL DISPENSER

Fabricated of 304 stainless steel, this unit dispenses C-fold or multi-fold paper towels and is fitted with tumbler lock and viewer slot. Matte black powder coat finish.

Overall Dimensions:
280 x 375 x 103 mm



10-0210 PAPER TOWEL DISPENSER (TRADITIONAL)

Fabricated of 22 gauge stainless steel, this unit dispenses 400 C-fold or 525 multi-fold paper towels without adjustment or adapters and is fitted with tumbler lock, viewer slots on both sides and a heavy-duty stainless steel piano hinge. Satin finish.

Overall Dimensions:
279 x 368 x 103 mm



10-20210 PAPER TOWEL DISPENSER (ROVAL™)

Dispenses 400 C-fold or 525 multi-fold paper towels. Fabricated of 22 gauge type 304 stainless steel. Fitted with recessed tumbler lock, viewer slots on both sides and heavy-duty stainless steel staked piano hinge. Satin finish.

Overall Dimensions:
281 x 345 x 124 mm



10-6457 PAPER TOWEL DISPENSER (PIATTO™)

This unit comes with a phenolic door and concealed hardware, and is *completely* recessed. Well-suited for smaller washrooms. Dispenses 350 C-fold or 475 multi-fold paper towels. For matte black phenolic door use suffix -41, for white use -00.

Unit Size:
324 x 438 x 116 mm

Finished Wall Opening*:
325 x 440 x 121 mm



10-0439 RECESSED TOWEL DISPENSER (TRADITIONAL)

This cabinet has 2 push-up flaps for bottom-filling with towels and dispenses 600 C-fold or 800 multi-fold paper towels. Designed to conceal the dispenser behind a mirror or wall so only the towel tray opening is visible. Satin finish.

Overall Dimensions:
324 x 457 x 108 mm

Note for Designers: Leave 152 mm clearance below towel tray opening for space to pull towels; units are installed before hanging mirror or applying finished wall.



10-6457 RECESSED PAPER TOWEL DISPENSER (SIMPLICITY)

Well-suited for the smaller washroom with less space and traffic, this unit dispenses 350 C-fold or 475 multi-fold paper towels. The door is attached with a 5 mm diameter staked piano hinge and held closed with a tumbler lock. Satin finish.

Overall Dimensions:
324 x 438 x 115 mm

Wall Opening:
286 x 400 x 108 mm



10-0452 RECESSED PAPER TOWEL DISPENSER (TRADITIONAL)

Dispenses 600 C-fold or 800 multi-fold paper towels. The door is attached with a 5 mm diameter staked piano hinge and held closed with a tumbler lock. Satin finish.

Overall Dimensions:
362 x 711 x 108 mm

Wall Opening:
324 x 673 x 102 mm



10-20452 RECESSED PAPER TOWEL DISPENSER (ROVAL™)

Dispenses 600 C-fold or 800 multi-fold paper towels. Fabricated of 18 gauge type 304 stainless steel. Door secured with a 3.5 mm diameter staked piano hinge and flush, rimless tumbler lock. Satin finish.

Overall Dimensions:
324 x 711 x 137 mm

Wall Opening:
286 x 672 x 100 mm



Waste Bins

ASI JD MacDonald offer an extensive range of waste bins in a variety of styles and sizes. Our designs reflect functionality, durability and easy maintenance and are sure to provide you with the perfect fit to suit your washroom needs.

SHOWN: 10-20826



10-1003 COUNTER TOP MOUNTED WASTE RECEPTACLE (TRADITIONAL)

Door and trim are 18 gauge stainless steel with satin finish. Push door is self-closing. Provided with adjustable stainless steel straps to accommodate counter thickness from 13 - 102 mm thick. Waste capacity of 28 L.

Unit Size:
362 x 254 x 2 mm

Counter Opening:
222 x 318 mm

MODEL OPTION:
10-1003-MV Vertical mount.



10-20826 SURFACE MOUNTED WASTE RECEPTACLE (ROVAL™)

Satin finish 20 gauge type 304 stainless steel. Receptacle body is formed seamless and has a bowed face and gently radiussed front verticle edges. Waste capacity of 48.4 L.

Overall Dimensions:
384 x 584 x 216 mm



10-0828 SURFACE MOUNTED WASTE RECEPTACLE (TRADITIONAL)

Satin finish 22 gauge stainless steel. Hemmed top and bottom edges for safety. Receptacle has 4 interior hooks for hanging a reusable heavy gauge vinyl liner bag with grommets (purchased separately). Waste capacity of 24.8 L.

Overall Dimensions:
356 x 457 x 150 mm

MODEL OPTIONS:
10-0826 has 45.4 L capacity.
10-0825 has 64 L capacity.
10-0827 has 7.6 L capacity.

OPTIONS:
10-28-PY Liner bag to suit 10-0828.
10-58-PY Liner bag to suit 10-0826.
10-25-PY Liner bag to suit 10-0825.



10-20458 SEMI-RECESSED REMOVABLE WASTE RECEPTACLE (ROVAL™)

Easy maintenance—removable 20 gauge stainless steel waste receptacle locks into 22 gauge cabinet with a tumbler lock for security. Receptacle body is formed seamless and has a bowed face and gently radiussed front verticle edges. Satin finish. Waste capacity of 42.6 L.

Overall Dimensions:
441 x 705 x 227 mm

Wall Opening:
400 x 660 x 100 mm



10-0458 SEMI-RECESSED WASTE RECEPTACLE (TRADITIONAL)

Satin finish 22 gauge stainless steel. Waste container locks into cabinet. Receptacle has 4 interior hooks for hanging a reusable heavy gauge vinyl liner bag with grommets (purchased separately). Waste capacity of 46 L.

Overall Dimensions:
438 x 775 x 210 mm

Wall Opening:
400 x 737 x 108 mm

MODEL OPTION:
10-0458-9 Surface mounted with stainless steel trim.

OPTION:
10-58-PY Liner bag

WASTE BINS



10-6474 RECESSED WASTE RECEPTACLE (SIMPLICITY)

Satin finish 20 gauge cabinet with 18 gauge stainless steel door. Full face door shall be fabricated from one piece and shall be free of miters, welding or open seams on face. Door held closed with two tumbler locks. Waste capacity of 45.4 L.

Overall Dimensions:
438 x 1016 x 171 mm

Wall Opening:
400 x 978 x 159 mm



10-0810 FREE-STANDING WASTE RECEPTACLE (TRADITIONAL)

Satin finish 22 gauge stainless steel. Self-closing doors on top with vinyl wall bumpers, rubber feet and hooks for disposable liners. Waste capacity of 54 L.

Overall Dimensions:
330 x 775 x 311 mm

MODEL OPTIONS:

10-0811 has no top.
10-0812 has 73.4 L capacity.
10-0813 has 73.4 L capacity and no top.



10-6474 WASTE RECEPTACLE (PIATTO™)

This unit comes with a phenolic door and concealed hardware, and is designed to be *completely* recessed into the plane of the washroom wall. Stainless steel waste receptacle holds 46L of washroom waste material. For matte black phenolic door use suffix -41, for white use -00.

Unit Size: Finished
438 x 1016 x 166 mm

Wall Opening*:
440 x 1018 x 170 mm



10-20470 RECESSED SANITARY NAPKIN DISPOSAL (ROVAL™)

Satin finish 22 gauge type 304 stainless steel. Receptacle body is formed seamless and has a bowed face and gently radiussed front verticle edges. Door held closed with a flush rimless tumbler lock. Waste capacity of 3.7 L.

Overall Dimensions:
325 x 280 x 138 mm

Wall Opening:
289 x 244 x 102 mm

MODEL OPTION:
10-20472 Expandable - mounts through partitions up to 32 mm.



10-20852 SURFACE MOUNTED SANITARY WASTE RECEPTACLE (ROVAL™)

Lid is drawn one-piece construction and is secured to the cabinet with a heavy-duty 3.5 mm diameter multi-staked concealed piano hinge. Receptacle body is formed seamless and has a bowed face and gently radiussed front verticle edges. Satin finish with a waste capacity of 3.8 L.

Overall Dimensions:
185 x 253 x 89 mm



10-0852 SURFACE MOUNTED SANITARY NAPKIN DISPOSAL

Satin finish 22 gauge stainless steel. Cover has a full length 4.8 mm diameter multi-staked piano hinge. Waste capacity of 4.5 L.

Overall Dimensions:
200 x 246 x 102 mm



10-9471 RECESSED SANITARY NAPKIN DISPOSAL (PROFILE)

Satin finish 20 gauge cabinet with 16 gauge stainless steel door. Features a self-closing stainless steel push door that covers the disposal opening along with a removable 7 L stainless steel waste receptacle. Door held closed with a flush rimless tumbler lock.

Overall Dimensions:
270 x 498 x 125 mm

Wall Opening:
232 x 460 x 108 mm

SHOWN: 10-0661-T VELARE™ BTM SYSTEM – STAINLESS STEEL
CABINET WITH FRAMELESS MIRROR, LIQUID SOAP DISPENSER,
AND PAPER TOWEL DISPENSER



NEW

Velare™ Collection

An elegant space-saving solution, designed to tuck away clutter, this wall mounted stainless steel cabinet conceals an automatic soap dispenser, and your choice of a paper towel dispenser or high-speed hand dryer (Dryer Model 0196—equipped with a HEPA Filter).

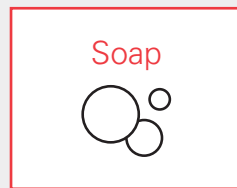
The sophisticated design is ideal for iconic buildings — the dispensing capacity makes it ideal for any high-traffic environment. Another reason to specify ASI JD MacDonald.

WHAT MAKES THE VELARE™ COLLECTION UNIQUE?



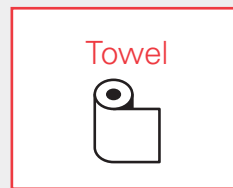
ARTFULLY CONCEALED

Consumables are concealed behind the mirror to accentuate the overall style.



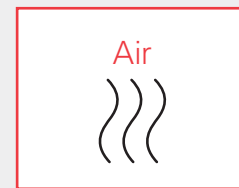
CONCEALED SOAP DISPENSER

High-capacity foam or liquid soap dispenser makes Velare™ ideal for high frequency use restrooms.



PAPER TOWEL OPTION

Velare™ provides paper towels as an option for drying hands. 500 towel capacity.



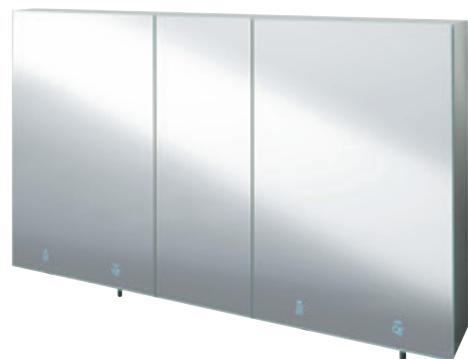
HAND DRYER OPTION

Optional high-speed, low-decibel hand dryer is equipped with a HEPA filter.

VELARE™ COLLECTION

ALL-IN-ONE CABINET HOUSES AN AUTOMATIC SOAP DISPENSER, AND YOUR CHOICE OF PAPER TOWEL DISPENSER OR HAND DRYER—NOW AVAILABLE WITH MIRROR FILLERS FOR FLEXIBILITY.

Backlit icons etched into the frameless mirror direct the user to their choice of soap and drying option. The self-contained design reduces hazards associated with wet floors. The 6mm thick tempered glass mirror supported by twin, damped gas springs, opens up to 90° for easy maintenance.





10-0661-2 STAINLESS STEEL CABINET WITH FRAMELESS MIRROR, LIQUID SOAP DISPENSER, AND HIGH-SPEED HAND DRYER (VELARE™)

Designed with elegance and safety in mind, this wall mounted stainless steel cabinet conceals a hands-free automatic liquid soap dispenser with a 6 L capacity and a high-speed hand dryer equipped with a HEPA filter.

Overall Dimensions:
600 x 900 x 192 mm



10-0661-T STAINLESS STEEL CABINET WITH FRAMELESS MIRROR, LIQUID SOAP DISPENSER, AND PAPER TOWEL DISPENSER (VELARE™)

This wall mounted stainless steel cabinet conceals a hands-free automatic liquid soap dispenser with a 6 L capacity and paper towel dispenser with a 500 towel capacity.

Overall Dimensions:
600 x 900 x 192 mm



10-0661-FM-14 STAINLESS STEEL FRAMELESS MIRROR FILLER MODULE (VELARE™)

Wall mounted stainless steel cabinet filler module provides spacing between other Velare™ BTM modules where needed. Mirror is made from 6 mm thick frameless tempered glass with pencil edges and eased corners with SS sheet intermediate stiffener and SS back plate with integral welded support mounts.

Overall Dimensions:
375 x 900 x 192 mm



10-0661-FM-23 STAINLESS STEEL FRAMELESS MIRROR FILLER MODULE (VELARE™)

Wall mounted stainless steel cabinet filler module provides spacing between other Velare™ BTM modules where needed. Mirror is made from 6 mm thick frameless tempered glass with pencil edges and eased corners with SS sheet intermediate stiffener and SS back plate with integral welded support mounts.

Overall Dimensions:
591 x 900 x 192 mm



10-0663-2 STAINLESS STEEL CABINET WITH FRAMELESS MIRROR, FOAM SOAP DISPENSER, AND HIGH-SPEED HAND DRYER (VELARE™)

This wall mounted stainless steel cabinet conceals a hands-free automatic foam soap dispenser with a 6 L capacity and a high-speed hand dryer equipped with a HEPA filter.

Overall Dimensions:
600 x 900 x 192 mm



10-0663-T STAINLESS STEEL CABINET WITH FRAMELESS MIRROR, FOAM SOAP DISPENSER, AND PAPER TOWEL DISPENSER (VELARE™)

This wall mounted stainless steel cabinet conceals a hands-free automatic foam soap dispenser with a 6 L capacity and a paper towel dispenser with a 500 towel capacity.

Overall Dimensions:
600 x 900 x 192 mm

Aptly named **Velare™**, which means to veil, this elegant, space saving mirror cabinet lives up to its name by concealing a soap dispenser (liquid or foam) and your choice of a high-speed hand dryer or paper towel dispenser.

Velare™ minimises the hazards of water spilling on the floor by housing soap and drying components directly above the sink. The mirror, made of 6 mm thick tempered glass with pencil edges, is supported by twin damped gas springs, which allows the cabinet to be opened up to 90° for easy maintenance.

Backlit icons etched into the mirror intuitively indicate soap and drying options making this cabinet both elegant and easy to use. This marriage of elegance, safety, and functionality makes Velare™ ideal for a wide range of building types, from sophisticated corporate headquarters to high traffic washrooms in entertainment centers and airports.





NOW AVAILABLE
IN FOAM



EZ Fill™ Soap Dispensing System

Can refill up to six soap dispensers with one pour. Model options now available in matte black or satin gold finish.

EZ FILL™ FEATURES

- Top-fill, expandable system
- Heavy-duty brass dispensers with chrome plated, matte black or satin gold finish
- Counter-mounted port has an anti-theft cover
- Easy to use
- This EZ Fill™ system is electrically operated using alternating current
- Anti-rotation flange



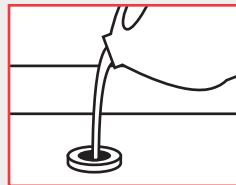
SOAP & HAND SANITISER DISPENSERS

WHAT MAKES THE EZ FILL™ SOAP DISPENSING SYSTEM UNIQUE?



MULTI-FEED SYSTEM

Using infrared sensors, each of up to 6 automatic soap dispensers is fed by its own controllable peristaltic pump.



EASY REFILL

Using a single soap reservoir, this top-fill system allows refill of up to 6 soap dispensers with 1 pour - for easy on-going maintenance.




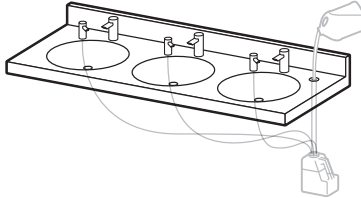
UNIVERSAL REMOTE

Controls all dispensers with one remote, allowing flexibility in settings with a choice of 4 presets.



SINGLE 6 L TANK

Holds 6 L of soap to supply up to six (6) individual EZ Fill™ vanity mounted automatic soap dispenser units.

INDIVIDUAL		MULTI-FEED SYSTEM (UP TO 6)		
 <p>Individual vanity mounted automatic soap dispenser with 1 L tank can be refilled by unscrewing soap head.</p>		 <p>The only top-fill soap dispensing system that can refill up to six soap dispensers with one pour.</p>		
Soap Heads	Individual Chrome	Soap Heads	Multi-Feed Chrome	6 Pack SKU ¹
LIQUID	10-0391-3AC	LIQUID	10-0390-3AC	10-0390-6-3AC
FOAM	10-0394-3AC	FOAM	10-0393-3AC	10-0393-6-3AC

NEW	Soap Heads	Multi-Feed Matte Black	6 Pack SKU ¹
	LIQUID	10-0390-3AC-41	N/A
NEW	Soap Heads	Multi-Feed Satin Gold	6 Pack SKU ¹
	LIQUID	10-0390-3AC-G	N/A

TOP FILL, MULTI-FEED SYSTEM REQUIRES (A) AND (B)

(A) 10-0390 Multi-Feed Kit³ - Kit³ includes a 6 Litre Soap Container, Top Fill Tube and Counter Fill Port with Cover.
For matte black finish use suffix **-41**.
For satin gold finish use suffix **-G**.

(B) Multi-Feed Soap Dispenser Head(s)²

EZ FILL™ ACCESSORIES

10-390-BR Optional Under Counter Mounting Bracket for 6 Litre Container

10-0390-R Remote Control¹ to adjust liquid dispensing settings

10-0390-ARK Anti-Rotation Kit for all 0390 Series

10-0393-R Remote Control¹ to adjust foam dispensing settings

Stand Alone Dispensers come standard with 1 L soap container

¹ One Remote Control provided at no charge, with the 6 Pack SKU

² Soap Dispenser Heads do not come with Multi-Feed Kit

³ Kit does not include soap dispenser heads



10-0340 SURFACE MOUNTED LIQUID SOAP DISPENSER

Transparent smoked grey tank with opaque grey base with push bar operation. Can dispense a wide variety of antiseptic and liquid soaps, shampoos, lotions or detergents*. Unit cover is sloped to prevent top use as a shelf and to keep water spray out. Cover is retained by a concealed locking release. Capacity: 1.36 L.

Overall Dimensions:
135 x 208 x 108 mm



10-0351 SURFACE MOUNTED LIQUID SOAP DISPENSER

Stainless steel housing and filler cap with push button operation. Can dispense soap, lotion or detergent*. Filler cap is permanently chained to housing which has four top to bottom viewing slots and holds a removable plastic globe, for ease of maintenance. Capacity: 0.35 L.

Overall Dimensions:
80 x 152 x 157 mm



10-5001-SS CARTRIDGE SOAP DISPENSER

Surface mounted, satin stainless steel finish. Soap is forced through disposable valve by pulling a lever forward. Disposable cartridges are available to dispense soap, hand lotion, heavy duty cleaner, waterless cleaner and antiseptic soap* and are typically good for 1500 washings. Capacity: 0.75 - 0.9 L.

Overall Dimensions:
108 x 279 x 102 mm



10-0350 SURGICAL SOAP DISPENSER

Dispenses antiseptic solutions and synthetic detergent soaps*. Chrome plated brass body with white polyethylene globe. Capacity: 0.47 L.

Overall Dimensions:
86 x 165 x 130 mm

*For a detailed list of acceptable soap types suitable for use in each unit, please visit our website and click on any soap dispenser product to access our 'Soap Dispensing Information' guide.

SOAP & HAND SANITISER DISPENSERS



10-0332 BENCH MOUNTED LIQUID SOAP DISPENSER

Corrosion-resistant valve with stainless steel spout and chrome plated brass escutcheon. Dispenses liquid soap*. Capacity: 1 L.

MODEL OPTIONS:

Code	Capacity	Spout
0332	1.0 L	102 mm
0332-C	0.6 L	102 mm
0332-CD	0.6 L	152 mm
0332-D	1.0 L	152 mm

Unit Size (0.6 L): 87 x 262 mm
Unit Size (1.0 L): 87 x 271 mm



10-20333 AUTOMATIC BENCH MOUNTED LIQUID SOAP DISPENSER

Constructed of polished chrome plated brass and dispenses liquid soap*. Powered by 4 D-size batteries (not included). LEDs indicate function, battery condition and soap supply level on face front. Translucent tank. Capacity: 1.6 L.

Overall Dimensions:
102 x 546 mm

Spout Projection: 99 mm



10-0360 AUTOMATIC LIQUID SOAP DISPENSER

Stainless steel soap dispenser in satin finish with proximity sensor. Can dispense liquid and lotion soaps*. Powered by 6 AA-size batteries (not included) and has a tamper-resistant viewing window and removable lid with special lock and key. Capacity: 1 L.

Overall Dimensions:
115 x 235 x 124 mm



10-0361 AUTOMATIC LIQUID SOAP AND GEL HAND SANITISER DISPENSER

White, high-impact plastic, with proximity sensor. Powered by one 9V or 6 AA-size batteries (not included). Provided with tamper-resistant soap level viewing window and swing open body with special lock and key. Can dispense liquid and lotion soaps, and gel hand sanitiser*. Capacity: 0.8 L.

Overall Dimensions:
118 x 263 x 113 mm



10-0362-41 AUTOMATIC LIQUID SOAP AND GEL HAND SANITISER DISPENSER

Automatic soap and gel hand sanitiser dispenser in matte black finish with proximity sensor. Suitable for dispensing higher viscosity/antimicrobial soap. Powered by 6 AA-size batteries (not included) and has tamper-resistant viewing window. Capacity: 0.8 L.

Overall Dimensions:
122 x 270 x 105 mm



FS-0300 HAND SANITISER DISPENSER STAND FOR MODELS 0361/0362/20364/20365

Type 304 stainless steel 11 gauge stand is designed with rounded edges for user safety, with an 18 gauge mounting plate and tube. The universal mounting plate has mounting holes to accommodate 20364 and 20365 dispensers and a flat surface to allow tape mounting of units 0361 and 0362 (all purchased separately), on the same plate, one at a time.

Overall Dimensions:
1446 mm H
Tube: 38 mm dia.
Base: 406 x 406 mm

*For a detailed list of acceptable soap types suitable for use in each unit, please visit our website and click on any soap dispenser product to access our 'Soap Dispensing Information' guide.



10-0346 SURFACE MOUNTED LIQUID SOAP DISPENSER

Satin stainless steel finish. Can dispense liquid soap, lotion or detergent* and has a tamper-resistant level window and hinged refill door which is opened with a special key (provided). Push valve is constructed of chrome-plated brass. Capacity: 1.18 L.

Overall Dimensions:
122 x 279 x 76 mm



10-0347 VERTICAL LIQUID SOAP DISPENSER

Satin stainless steel finish. Can dispense liquid or lotion soap, synthetic detergent or antibacterial soap*. Features a push-button valve, tamper-resistant level window and hinged refill door which is opened with a special key (provided). Capacity: 1.18 L.

10-0347 Overall Dimensions:
122 x 208 x 100 mm
Spout projection: 24 mm



10-0341-41 VERTICAL LIQUID SOAP DISPENSER

Satin stainless steel with a matte black powder coated finish. Can dispense liquid soap*. Features a push-button valve, tamper-resistant level window and hinged refill door, opened with a special key (provided). Capacity: 1.18 L.

10-0347 Overall Dimensions:
122 x 207 x 98 mm
Spout projection: 24 mm



10-0345 HORIZONTAL LIQUID SOAP DISPENSER

Satin stainless steel finish. Can dispense liquid or lotion soap, synthetic detergent or antibacterial soap*. Features a push-button valve, tamper-resistant level window and hinged refill door which is opened with a special key (provided). Capacity: 1.18 L.

10-0345 Overall Dimensions:
208 x 112 x 100 mm
Spout projection: 24 mm



10-9343 SURFACE MOUNTED LIQUID SOAP DISPENSER (PROFILE)

Satin stainless steel finish. Can dispense liquid or lotion soap, synthetic detergent or antibacterial soap*. Features a push-button valve, tamper-resistant level window and hinged refill door which is opened with a special key (provided). Capacity: 1.4 L.

Overall Dimensions:
184 x 165 x 94 mm
Spout Projection: 24 mm



10-20363 SURFACE MOUNTED LIQUID VERTICAL SOAP DISPENSER (ROVAL™)

Satin stainless steel finish. Gently radiused edge complements the curves of the Roval™ Collection. Can dispense liquid soap*. Features a push-button valve, tamper-resistant level window and hinged refill door which is opened with a special key (provided). Capacity: 1.7 L.

Overall Dimensions:
140 x 274 x 101 mm
Spout Projection: 24 mm

*For a detailed list of acceptable soap types suitable for use in each unit, please visit our website and click on any soap dispenser product to access our 'Soap Dispensing Information' guide.

SOAP & HAND SANITISER DISPENSERS



10-20364 AUTOMATIC LIQUID SOAP AND GEL HAND SANITISER DISPENSER (ROVAL™)

Satin stainless steel finish. Gently radiused edge complements the curves of the Roval™ Collection. Hands-free, liquid soap and gel hand sanitiser dispenser, powered by 6 AA-size batteries (not included). Dispensing cycles adjustable with tamper-proof magnetic key. Translucent removable internal tank for easy-to-view level. LED indicates adjustment and operation. Capacity: 1 L.

Overall Dimensions:
140 x 276 x 102 mm



10-20365 AUTOMATIC FOAM SOAP AND FOAM HAND SANITISER DISPENSER (ROVAL™)

Satin stainless steel finish. Gently radiused edge complements the curves of the Roval™ Collection. Hands-free, foam soap and foam hand sanitiser dispenser, powered by 4 AA-size batteries (not included). Dispenses foam drop each time sensor is activated. Translucent removable internal tank for easy-to-view level. LED indicates adjustment and operation. Capacity: 1 L.

Overall Dimensions:
140 x 276 x 102 mm



10-9326 RECESSED HORIZONTAL LIQUID SOAP DISPENSER (PROFILE)

Satin stainless steel finish. Can dispense liquid or lotion soap, synthetic detergent or antibacterial soap*. Features a push valve which is constructed of chrome-plated brass, an impact resistant level window and a flush rimless tumbler lock. Dispenser has a covered stainless steel soap tank attached to the door, which hinges out for easy filling and cleaning. Capacity: 1.54 L.

Overall Dimensions: 260 x 152 x 183 mm
Wall Opening: 229 x 124 x 108 mm
Spout Projection: 57 mm

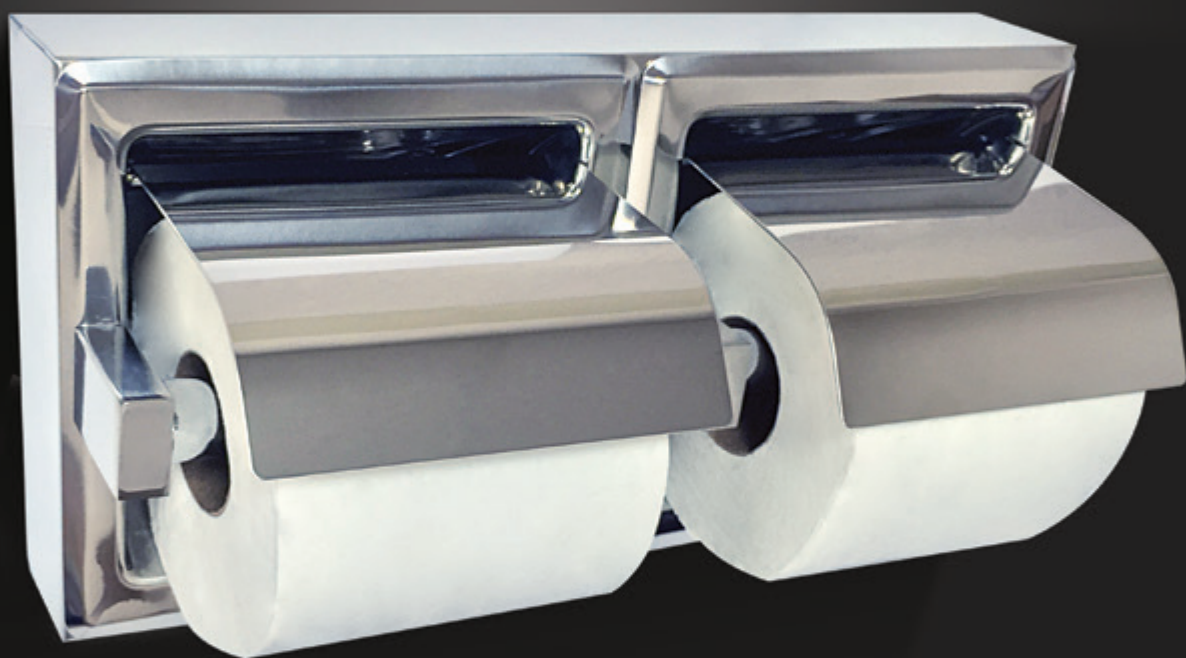
10-0326 RECESSED HORIZONTAL LIQUID SOAP DISPENSER

Satin stainless steel finish. Can dispense liquid, lotion or detergent soap, synthetic detergent or antibacterial soap*. Features a push valve constructed of chrome plated brass, an impact resistant level window and tumbler lock. Internal soap tank is seamless molded leak-proof polyethylene with a large open top for easy refilling. Capacity: 1.7 L.

Overall Dimensions: 260 x 152 x 168 mm
Wall Opening: 229 x 124 x 102 mm
Spout Projection: 64 mm

*For a detailed list of acceptable soap types suitable for use in each unit, please visit our website and click on any soap dispenser product to access our 'Soap Dispensing Information' guide.

SHOWN: 10-74022-HBSM TOILET PAPER DISPENSER



Toilet Paper Dispensers

ASI JD MacDonald offers many different designs and styles to complement the features of your washroom setting. Engineered for heavy-duty use and easy maintenance, these units stand the test of time.

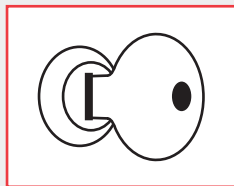
Choose from a wide range of features, based on your own washroom needs. All of these options are easy to install, easy to use, durable and affordably priced.

WHAT MAKES THESE DISPENSERS UNIQUE?



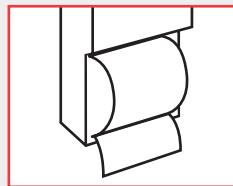
STAINLESS STEEL CONSTRUCTION

Our dispensers are made of stainless steel, which is tough, durable, stain-resistant and easy to clean.



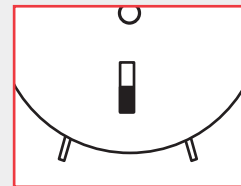
TUMBLER LOCKS

Our tumbler locks provide convenience and security with an elegant look.



SAFE & EASY DISPENSING

Dispensing and storage options vary, from single roll to multiple rolls or jumbo roll dispensers.



VIEWING SLOT

Slot in front cover of jumbo roll dispensers provides easy visual indication of remaining paper supply.

FEATURES

- Easy to use and clean
- Spring-loaded chrome roller may apply
- Theft-resistant spindle and vandal-resistant locking device options
- Some models have built-in storage for additional rolls



JDM-0058-S INTER-FOLD TOILET PAPER DISPENSER

Satin stainless steel finish. Holds two standard inter-leaf toilet paper packs which are inserted through the side opening. Reserve pack falls into place when empty pack is removed. A sight window on the front indicates when replenishing is required.

Overall Dimensions:
143 x 241 x 43 mm

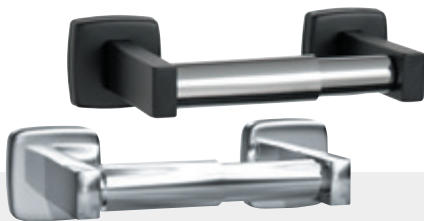


10-0710 SINGLE TOILET PAPER HOLDER

Polished chrome-plated steel finish. Holds one standard toilet roll and has brake-springs to provide controlled delivery. Vandal-resistant locking device ensures roll is non-removable until depleted.

Overall Dimensions:
152 x 70 x 111 mm

MODEL OPTION:
10-0715 Holds 2 rolls (314 x 70 x 108 mm).

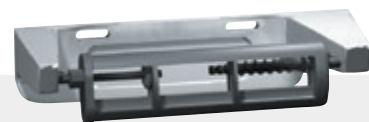


10-7305 SINGLE TOILET PAPER HOLDER

Satin or bright stainless steel finish with high-impact resistant chrome plated roller and concealed bracket. Holds one standard core roll. (Add suffix '-S' for satin, '-B' for bright or '-41' for matte black to indicate finish preference).

Overall Dimensions:
207 x 51 x 98 mm

MODEL OPTIONS:
10-7305-2-41 Holds 2 rolls, matte black finish (343 x 51 x 98 mm).
10-7305-2S Holds 2 rolls, satin finish (343 x 51 x 98 mm).
10-7305-2B Holds 2 rolls, bright finish (343 x 51 x 98 mm).



10-0263-1 SINGLE ROLL TOILET PAPER DISPENSER

Fabricated of aluminum casting with satin-matte, silver-grey finish. Holds and dispenses all standard core roll paper up to 152 mm diameter with a controlled-delivery and theft resistant spindle.

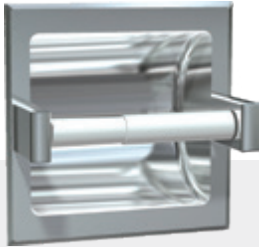
Overall Dimensions (Single):
165 x 45 x 102 mm

Overall Dimensions (Double):
330 x 45 x 102 mm

MODEL OPTIONS (SINGLE):
10-0263-12 with key lock.
10-0263-1A with uncontrolled delivery and key lock.

MODEL OPTIONS (DOUBLE):
10-0264-1 holds two rolls.
10-0264-12 with key lock.
10-0264-1A with uncontrolled delivery.
10-0264-1A2 with uncontrolled delivery and key lock.

TOILET PAPER DISPENSERS



10-7402 RECESSED SINGLE TOILET PAPER HOLDER

Satin or bright stainless steel finish with high-impact resistant chrome plated roller. Holds one standard core roll. (*Add suffix '-SD' for satin or '-BD' for bright to indicate finish preference.)

Overall Dimensions:

160 x 160 x 97 mm

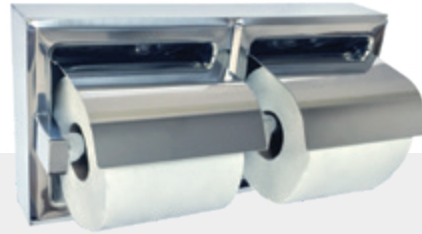
Wall Opening:

140 x 140 x 51 mm

MODEL OPTIONS:

10-7402-SSM Surface mounted, satin finish.

10-7402-HSSM Surface mounted with hood, satin finish.



10-74022-HBSM DOUBLE TOILET PAPER HOLDER WITH HOOD

Satin or bright stainless steel finish with high-impact resistant chrome plated roller. Holds two standard core rolls. (*Replace the 'B' in the suffix with 'S' for satin finish).

Overall Dimensions:

320 x 160 x 97 mm

MODEL OPTIONS:

10-74022-BSM Surface mount w/out hood, bright finish.

10-74022-SSM Surface mount w/out hood, satin finish.

10-74022-SD Recessed, without hood, satin finish.

10-74022-HSD Recessed with hood, satin finish.



10-0267 VANDAL-RESISTANT DOUBLE HOOD

Satin stainless steel finish. Welded construction with no exposed fasteners or welded seams. For use only with 0264-1 double roll toilet paper dispenser (specified and purchased separately).

Overall Dimensions:

359 x 197 x 175 mm

MODEL OPTION:

10-0266 Single, suits 0263-1 series (184 x 197 x 175 mm).



10-R-009 THEFT-RESISTANT SPINDLE

Fabricated of high impact-resistant ABS plastic. Paper core must be ripped off to remove spindle after roll is exhausted.

Note: 10-R-009 Theft-resistant spindle is available for the 7000 series of toilet paper dispensers.



10-0030 TWIN HIDE-A-ROLL TOILET PAPER DISPENSER

Stainless steel with satin finish. Holds two standard rolls up to 133 mm diameter and comes with theft-resistant rollers. Top roll automatically drops in place when bottom roll is used up. Equipped with a tumbler lock.

Overall Dimensions:
152 x 305 x 165 mm



10-9030 TWIN HIDE-A-ROLL TOILET PAPER DISPENSER (PROFILE)

Stainless steel with satin finish. Holds two standard rolls up to 133 mm diameter and comes with theft-resistant rollers. Top roll automatically drops in place when bottom roll is used up. Equipped with a flush, rimless tumbler lock.

Overall Dimensions:
152 x 305 x 159 mm



10-20030 TWIN HIDE-A-ROLL TOILET PAPER DISPENSER (ROVAL™)

Stainless steel with satin finish. Holds two standard rolls up to 133 mm diameter and comes with theft-resistant rollers. Top roll automatically drops in place when bottom roll is used up. Cabinet door has bowed front face and gently radiused edges to provide added strength and complimentary appearance for modern washroom aesthetics. Equipped with a recessed tumbler lock.

Overall Dimensions:
154 x 308 x 165 mm



10-20031 SEMI-RECESSED TWIN HIDE-A-ROLL TOILET PAPER DISPENSER (ROVAL™)

Stainless steel with satin finish. Holds two standard rolls up to 133 mm diameter and comes with theft-resistant rollers. Top roll automatically drops in place when bottom roll is used up. Cabinet door has bowed front face and gently radiused edges to provide added strength and complimentary appearance for modern washroom aesthetics. Equipped with a recessed tumbler lock.

Overall Dimensions: 205 x 356 x 165 mm
Wall Opening: 159 x 311 x 86 mm

TOILET PAPER DISPENSERS



10-0029 TRIPLE ROLL TOILET PAPER DISPENSER

Stainless steel with satin finish. Unit holds three standard toilet rolls and has a side viewing window. Rolls are loaded into the cabinet through the top. Bottom roll is depleted prior to top roll dropping into lower position for use. Equipped with a tumbler lock.

Overall Dimensions:
120 x 425 x 125 mm



10-0697-GAL SHELF AND DOUBLE TOILET PAPER HOLDER

Stainless steel with satin finish. Shelf is 127 x 457 mm with front edge hemmed. Holds two standard toilet paper rolls.

Overall Dimensions:
457 x 106 x 127 mm



10-0042 JUMBO ROLL TOILET PAPER DISPENSER

Stainless steel with satin finish. Holds one roll up to 254 mm diameter of 41 or 57 mm diameter core and has a viewing slot and tumbler lock.

Overall Dimensions:
270 x 270 x 114 mm

MODEL OPTION:
10-0042-41 Matte black finish.



10-0040 TWIN JUMBO ROLL TOILET PAPER DISPENSER

Holds two 229 mm diameter rolls of 57 or 76 mm diameter core. When one roll is depleted, slide panel to expose other roll. Door cabinet and mounting plate fabricated of 18 gauge type 304 stainless steel with a satin finish. Two viewing slots reveal toilet paper rolls inside. Equipped with tumbler lock.

Overall Dimensions:
529 x 289 x 157 mm



Specialty Accessories

With an extensive portfolio of washroom accessories, ASI JDMacDonald can provide whatever you need to promote the neat and orderly use of your facilities. These designs reflect our attention to detail for durability and easy maintenance.

SHOWN: 10-0712 RETRACTABLE CLOTHES LINE



10-7355-18 TOWEL BAR (ROUND)

19 mm diameter stainless steel towel bar with stainless steel mounting bracket. Available in 457, 610 and 762 mm lengths. Extends 83 mm from wall. (Add suffix 'S' for satin or 'B' for bright to indicate finish preference).

Overall Dimensions:
457 x 51 x 83 mm

MODEL OPTIONS:
10-7355-24 length, 610 mm.
10-7355-30 length, 762 mm.



10-0258-SS SURFACE MOUNTED FACIAL TISSUE DISPENSER

Stainless steel with satin finish. Dispenses 300 single-ply or 150 two-ply sheets. Dispensing slot has fully hemmed-in rolled edge for snag free dispensing and user safety.

Overall Dimensions:
260 x 135 x 55 mm



10-0712 SURFACE-MOUNTED RETRACTABLE CLOTHES LINE

Stainless steel with bright finish. Unit has spring actuated reel with a 1829 mm vinyl covered cord with white vinyl knob and locking nut to hold stretched line taut. Installs over bathtub or in shower.



10-7320 SOAP DISH

Drawn, one-piece stainless steel soap dish welded to support arm and flange. Has two drain holes and two ridges to support bar of soap. (Add suffix 'S' for satin or 'B' for bright to indicate finish preference).

Overall Dimensions:
108 x 51 x 102 mm

SPECIALTY ACCESSORIES



10-0714 COAT AND BUMPER HOOK

Fabricated of brass with a chrome plated finish and projects 76 mm. Neoprene bumper protects wall surface.

Overall Dimensions:
35 x 63 x 76 mm



10-0751 HEAVY-DUTY ROBE HOOK

Fabricated of brass with a chrome finish. With concealed mounting. Projects 84 mm.

Overall Dimensions:
76 x 76 x 84 mm



10-7382-S HAT AND COAT HOOK

Double hook made from stainless steel with satin finish for both coats and hats.

Overall Dimensions:
51 x 178 x 76 mm

MODEL OPTION:
10-7382-B Bright finish.



10-8425 CLOTHES HOOK

Heavy-duty 11 gauge type 304 stainless steel with satin finish.

Overall Dimensions:
32 x 57 x 32 mm



10-7340-S SINGLE ROBE HOOK

Fabricated from stainless steel with a satin finish.

Overall Dimensions:
51 x 51 x 51 mm

MODEL OPTIONS:
10-7340-B Bright finish.
10-7340-41 Matte black finish.



10-7301-B TOWEL PIN

Fabricated from stainless steel with a bright finish.

Overall Dimensions:
51 x 51 x 89 mm

MODEL OPTION:
10-7301-S Satin finish.



10-7345-B DOUBLE ROBE HOOK

Fabricated from stainless steel with a bright finish. 102 mm long stainless steel bar forms hook at each end.

Overall Dimensions:
102 x 51 x 51 mm

MODEL OPTION:
10-7345-S Satin finish.



JDM-8753 DOUBLE ROBE HOOK

Fabricated from chrome plated brass.

Overall Dimensions:
55 x 60 x 55 mm



Custodial Accessories

Fabricated of type 304 satin finish stainless steel, our one-piece constructed custodial accessories—with various configurations of mop and broom holders and utility hooks—help keep necessary cleaning tools and supplies organised and accessible.

SHOWN: 10-8215-5 MOP AND BROOM RACK



10-1307-3 UTILITY HOOK STRIP WITH 3 HOOKS (660 mm)

Fabricated of type 304 stainless steel with satin finish. Hooks are heavy-duty and are one-piece, formed of 14 gauge.

MODEL OPTIONS:

10-1307-4 With 4 hooks 914 mm long.

10-1307-5 With 5 hooks 1168 mm long.



10-8215-5 MOP AND BROOM RACK (1168 mm)

Fabricated of type 304 stainless steel with satin finish. Brackets are cadmium-plated steel and are ribbed for strength. Each holder has a pivoting spring loaded serrated rubber cam that can hold handles of 22 - 32 mm diameter, wedged against ribbed clamp plate. Each holder can support up to 4,54kg.

MODEL OPTIONS:

10-8215-3 3 holders, 660 mm long.

10-8215-4 4 holders, 914 mm long.



10-0692 SURFACE MOUNTED SHELF

Fabricated of 18 gauge stainless steel with a satin finish. Front edge is hemmed for maximum rigidity and safety. Suitable for wet (self contained) or dry materials storage.

See chart for standard sizes.

Length	Depth		
	125 mm	150 mm	200 mm
305 mm	10-0692-512	10-0692-612	10-0692-812
410 mm	10-0692-516	10-0692-616	
460 mm	10-0692-518		
610 mm	10-0692-524	10-0692-624	
760 mm	10-0692-530		



10-0694-18 SURFACE MOUNTED SHELF WITH BACK-SPLASH

Fabricated of 18 gauge stainless steel with satin finish on exposed surfaces with 125 mm depth and 460 mm length. Shelf has 25 mm hollow pan construction on three sides and raised back-splash, all from one piece. Suitable for wet (self contained) or dry materials storage.

MODEL OPTION:

10-0694-24 610 mm length.



10-7380-18B SURFACE MOUNTED TOWEL SHELF

Stainless steel with bright finish and roll formed edges with 144 mm depth and 460 mm length.

Overall Dimensions:

460 x 51 x 156 mm

MODEL OPTIONS:

10-7380-18S Satin finish, 460 mm length.

10-7380-24B Bright finish, 610 mm length.

10-7380-24S Satin finish, 610 mm length.



Mirrors

ASI JD MacDonald provides mirrors for every location, application and budget—virtually any size available. Choose from a variety of reflective surfaces and wall mountings, as well as styles ranging from frameless mirrors to mirrors with shelves. Mirror silver guaranteed for 15 years.



SHOWN: 10-0625-V CHANNEL FRAME MIRROR WITH SHELF

OPTIONAL REFLECTIVE SURFACES

SUFFIX DESCRIPTION:

- B Tempered Glass** 6 mm polished tempered glass.
- C Stainless Steel Mirrors** Type 304 Stainless Steel polished to a #8 mirror finish.
- D Lexan Dura-Mir™** Fabricated of 6 mm polycarbonate sheet.
- E Plexiglas** 6 mm acrylic plastic, lightweight and shatter-resistant.
- L Laminated Glass** 6 mm thick.

Note for Designers: All of the above glazing options are particularly suited to applications where frequent breakage and/or security problems exist. These surfaces are best specified for use in prisons, schools, police stations, psychiatric wards, etc., where shards of broken glass might possibly be used as weapons. The reflective quality of these types of mirrors is not as true as plate glass.

STANDARD MIRROR SIZES						
Width x Height	0600	0605	0620	0625	8026	20650-B
410 x 510 mm (16" x 20")					■	
410 x 610 mm (16" x 24")	■	■				
460 x 610 mm (18" x 24")	■			■	■	■
460 x 760 mm (18" x 30")	■	■	■			■
460 x 910 mm (18" x 36")	■		■	■		■
 460 x 990 mm (18" x 39")	■					
610x 760 mm (24" x 30")					■	■
610x 910 mm (24" x 36")	■		■	■	■	■
 610x 990 mm (24" x 39")	■				■	
910x 910 mm (36" x 36")	■	■				■

* Custom sizes available upon request. Standard glazing is glass unless otherwise stated. See 'Optional Reflective Surfaces' above for alternative options.



10-0600-V ANGLE FRAME MIRROR

19 x 16 mm roll formed 18 gauge type 304 stainless steel angle has corners heliarc welded, ground and polished smooth to a uniform satin finish. Mirror is installed on a concealed hanging bracket that locks onto top and bottom of frame by tamper-proof set screws. Back plate is one-piece, attached to frame with theft-resistant locking device.

MODEL OPTION:

10-0605-V With shelf (108 mm deep).

**Both 10-0600-V & 10-0605-V are provided with vinyl backing.*



10-0620-V CHANNEL FRAME MIRROR

13 x 13 mm 20 gauge type 304 satin finish stainless steel channel is a one-piece roll formed member that encases mirror and backing revealing a tight mitered corner. Mirror is installed on two wall brackets and held secure by theft-resistant screws.

MODEL OPTION:

10-0625-V With shelf (111 mm deep).

**Both 10-0620-V & 10-0625-V are provided with vinyl backing.*



10-8026 FRAMELESS STAINLESS STEEL MIRROR

Fabricated of 20 gauge type 304 stainless steel polished to a #8 mirror finish with a 8 mm return. Provided with 6 mm thick concealed tempered masonite backing and 4 mounting holes.

**Designers Note: the reflective quality of a stainless steel mirror is not as true as plate glass. It is not recommended that a mirror of this type be made larger than 1219 x 610mm because image quality (distortion) degrades with increased surface size.*



10-20650-B ROVAL™ STAINLESS STEEL MIRROR

Gently radiused edges match the curves of the ASI Roval™ design. Frame fabricated of 18 gauge type 304 stainless steel with satin finish and polished seamless mitered corners. Tempered glass. Supplied with an 18 gauge corrosion protected steel 'H' bracket for mounting.



Welcome to ASI JD MACDONALD: where innovation, speed and reliability provide peace of mind

JD MacDonald expanded into Washroom Accessories in 1959 - since then we have developed a following among Building Owners, Architects and Construction Professionals who count on us because we consistently deliver on a promise of quality, value, impeccable customer service and choice.

In 2013 JD MacDonald was acquired by the ASI Group and as the newly founded ASI JD MacDonald, we continue to provide more choices in hand dryers, paper towel dispensers, waste bins, combination units, grab rails, baby changing stations, soap dispensers, toilet paper dispensers and much more. Since then, we've expanded into toilet partitions, offering options in both structural and compact laminate. In addition we also offer a range of waste management products including garbage chutes, linen chutes and rotobins.

ASI GROUP

Privately owned and operated since inception the ASI Group now has operating units and offices in the US, Canada, Australia, Belgium, UK, Middle East and China, with sales in over 50 countries.

For over 50 years our companies have been known for innovative products and the widest choice in product and material for Washroom Accessories, Toilet Partitions, Lockers and other storage devices. Our nimble management philosophy allows us to deliver more products in 48 hours than anyone else in our industry and our flexibility allows us to create unique products to suit specific needs.

You will find one common thread that ties our family of companies together - a singular focus on our customer. That focus is captured in our mission statement: **"To make our customers successful by providing a value greater than price and an excellent service experience."** www.asigroup.us

OUR GLOBAL REACH: Allow our experienced architectural team to help you deliver on your promise of excellence as they have delivered on some of the most prestigious projects worldwide:

Corporate World HQ: Apple Corp., Coca Cola Corp., Facebook, Goldman Sachs (US)

Intl. Offices: Microsoft, Intel (China), HSBC (Egypt), Residence Palace, Antwerp Port House (Belgium)

Airports: Canberra Airport (AUS), JFK Intl., DFW Intl., Logan Intl. (US), Hong Kong Intl. (China)

Education: NYU Dormitories (UAE), Yale Univ., Stanford Univ., Univ. of Notre Dame (US)

Medical: Red Cross (AUS), Memorial Sloane Kettering, Mayo Clinic (US), Al Mafraq Hosp. (UAE)

Hospitality: Crown Plaza (Jordan), Ritz Carlton (US), Kempinski Hotel, Intercontinental Hotel (Qatar)

Entertainment: Shanghai Disney (China), Plopsa Water Parks (EU), MGM Grand Casino, Lincoln Center (US)

Stadiums: Yankee Stadium, Madison Square Garden (US), Doha Rugby and Football Stadium (Qatar)

Government: Royal Australian Airforce Base (AUS), US Embassy (China), Great Lakes Naval Base (US)

MORE CHOICES: Every building type, physical environment, project size and geography

- Hospitals and Health Care
- Universities and School Districts
- Office Buildings
- Stadiums and Fitness Facilities
- Airports and Travel Hubs
- Government Buildings & Convention Centers
- Prisons and Security Facilities
- Restaurants and Chain Stores
- Hotels and Multi-Family Buildings
- Theatres and Entertainment Complexes
- Museums and Libraries
- Theme Parks and Shopping Malls
- Parks and Recreation Facilities
- Warehouses / Manufacturing / Food Service Plants

ASI JD MacDonald: Your *single source* for privacy, hygiene, safety and eco-friendly products.



ASI JD MacDonald Pty Ltd
ABN: 61 162 663 872
E: enquiry@asijdmacdonald.com.au
P: 03 8558 7200 F: 03 9548 1141

Free Call 1800 023 441

www.asijdmacdonald.com.au