

# ARCADIA RITZ<sup>®</sup>

E-BLIND SYSTEM



 **ARCADIA<sup>®</sup>**  
Ventilation and Sunscreen Specialists



# RITZ® E-BLIND BY ARCADIA



## OVERVIEW

---

Arcadia Ritz® E-Blind System is an external retractable blind which is extremely versatile and fully adjustable utilising a push button control system. The Ritz® E-Blind System has been designed to enhance the energy efficiency of buildings by controlling the heat, light and ultraviolet rays which enter through glass window openings.

## IN THIS BROCHURE YOU WILL FIND

---

- Ideas to enrich a building's façade.
- Superior versatility and sleek design solutions.
- Information regarding energy reduction and precise automation.
- A guide to the various custom options available.
- Design specification information.

We are available to answer your questions. Call our experts who will talk through your design requirements and will be more than happy to assist you.

# THE RITZ® EXPERIENCE



## RITZ® RETRACTABLE E-BLIND SYSTEM

At the touch of a button the Arcadia Ritz® Operating E-Blind System allows total sun control.

All the E-Blinds are controlled electronically. Environmental sensors can be installed which automatically adjust the E-Blind louvres to suit the environmental conditions.

The RITZ® E-Blind Operating System can be incorporated into your Building Management System (BMS).

# RITZ® E-BLIND SYSTEM



## FUNCTION

---

- The E-Blind is available in various standard colour options.
- Adjustable and retractable with a full 90° tilt/shift.
- Full privacy when closed.
- Blind can be fitted internally and externally to a building.
- Operation of the blind controlled by: switches, remote control or total automation set to the location.
- Available in aluminium with a maximum length of 5700mm.
- Roll formed aluminium blade is 80mm.
- Cedar blade is available on request.

## BENEFITS

---

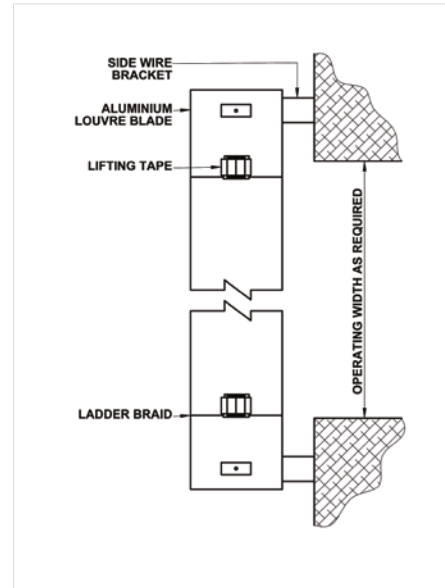
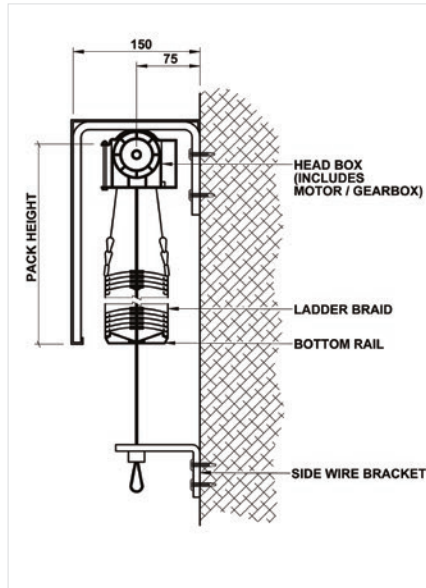
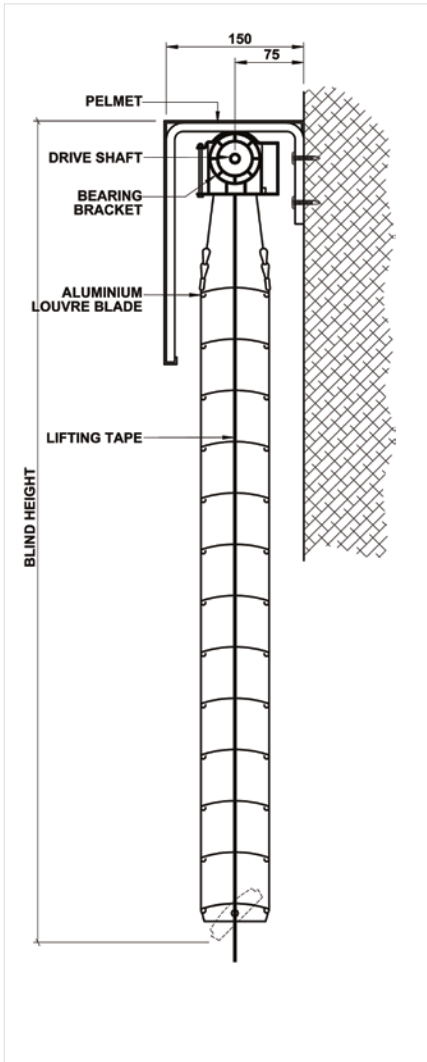
- Up to 80% reduction of UV radiated heat and glare.
- Directly lowers the air-conditioning running costs.
- Privacy.
- Shade and sun control.
- Stack height is minimal and is not restrictive. Suitable for facades, balconies, decks and other areas.
- Minimal maintenance required apart from spot cleaning and dusting.
- Motor components are self-lubricating and require minimal regular servicing.

## AUTOMATION

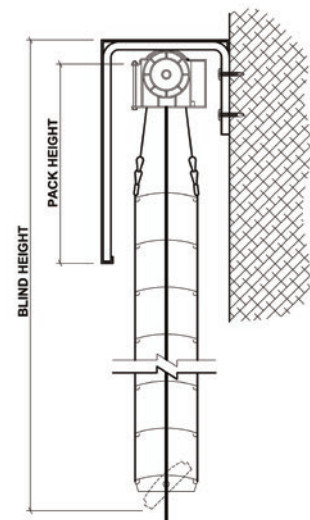
---

- Local sun and wind sensors can be integrated for automation for unexpected changes with the weather.
- Full integration to a building management system (BMS). Flexible compatibility with Arcadia and industry solar shading products controlled from a BMS.

# OPTIONS

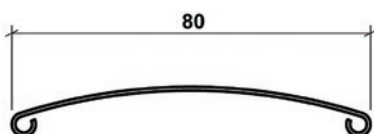


BLIND HEIGHT	PACK HEIGHT
750mm – 1000mm	180mm
1001mm – 1250mm	200mm
1251mm – 1500mm	220mm
1501mm – 1750mm	240mm
1751mm – 2000mm	260mm
2001mm – 2250mm	280mm
2251mm – 2500mm	300mm
2501mm – 2750mm	320mm
2751mm – 3000mm	340mm
3001mm – 3250mm	360mm
3251mm – 3500mm	380mm
3501mm – 3750mm	400mm
3751mm – 4000mm	420mm



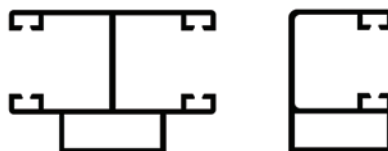
## RITZ® 80 ROLL FORMED BLADE

- Sleek air foil profile.



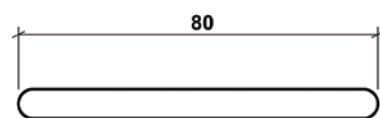
## RITZ® GUIDE RAILS

- Extruded guide rails



## RITZ® CEDAR BLADE

- Flat profile.



Arcadia reserves the right to change the Ritz® E-Blind product specification at anytime.

# HIGH RISE INTEGRATION

## PERFORMANCE

The Ritz® E-Blind performs best when fitted between double glazed windows. This offers maximum energy benefits from shading, reduction of cleaning and protects the blades and support structure from extreme and damaging weather.

When the Ritz® E-Blind is fitted to the exterior glazing the blade width should be reduced and fixed as close to the building as possible for optimal function and protection in extreme weather conditions.

The Arcadia Ritz® E-Blind System is not designed to withstand high wind loads.

## SIDE GUIDE SYSTEM

These extruded aluminium guide rails give superior stability to wire guides in gusty wind conditions and are lined with non-friction inserts to eliminate noise.



## ELECTRICAL DETAILS

The Ritz® E-Blind System comes with the full range of electric operating options. Up to four different areas of blinds can be individually operated from a wall switch or wireless remote. Rain and wind sensors can also be added to the circuit to operate the system automatically.



### PUSH BUTTON

Designed for operating one area of louvres. Use in conjunction with 24V DC power supply.



### RC REMOTE CONTROL

Must be used in conjunction with the CRM control unit and the KP push button.



### KP PUSHBUTTON

This component is required if operating two or more areas separately or if using a remote. Must be used in conjunction with the CRM control unit.



### CRM CONTROL UNIT

Must be used if the KP Pushbutton, RC Remote Control or RS Rain Sensor is required



### RS RAIN SENSOR

Must be used in conjunction with the CRM control unit.

## WIRE GUIDE SYSTEM

The wire guide system offers a sleek clean look when integrated to the Ritz® E-Blind. It is critical that the wire guide fixings are sufficiently tensioned to achieve optimum performance.

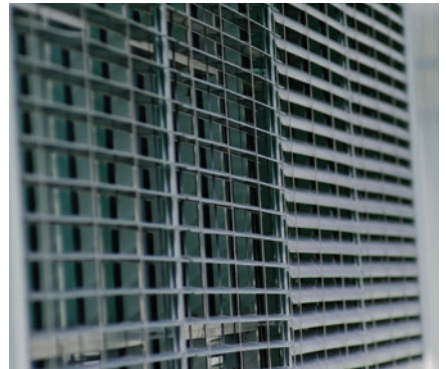
## PELMET

Pelmets are fitted to adequately house the Ritz® E-Blind, providing protection for the motor and the retracted louvre blades. The pelmet housing is aesthetically pleasing and provides an unobstructed view from the window or balcony.

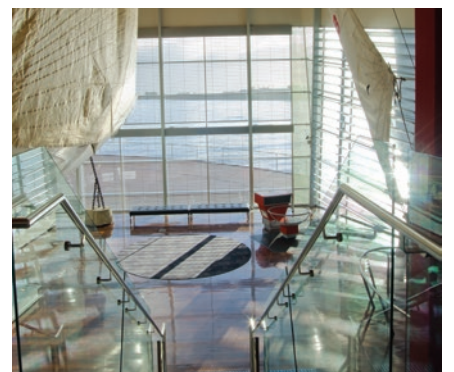
## FINISHES

Contact Arcadia for a colour chart.









# RITZ® | E-BLIND SPECIFICATION

## RITZ® E-BLIND

---

E-Blind shall be Ritz® Series, designed to protect from direct sunlight and rain, manufactured from extruded aluminium base material as standard with the manufacturer and finished using (select from **A** below).

Ritz® E-Blind shall be fitted with the (select from **B** below) type louvre blades.

## LOUVRE CONTROLS

---

The RITZ® E-Blind shall be fitted with (select from **C** below). The Ritz® E-Blind shall be fitted (select from **D** below).

## INSTALLATION AND MOUNTING

---

Installation and mounting details will be designed to satisfy wind actions for Region (select from **E** below) and Terrain Category (select from **F** below) in accordance with AS 1170.2 structural design actions to suit Arcadia proprietary systems and manufacturers recommendations.

### **A** RITZ® COLOUR

---

- Colour coated material.
- Specialised finishes (available upon request).

### **B** RITZ® LOUVRE BLADE

---

- Roll Formed Aluminium
- Cedar 80mm

### **C** LOUVRE CONTROLS

---

- Standard Push Button Controller (wall mounted)
- Remote Push Button Controller
- Integration with Building Management system (BMS).

### **D** SUN & WIND SENSOR

---

- With a sun & wind sensor
- Without a sun & wind sensor

### **E** REGION

---

- Region A
- Region B
- ~~Region C~~ (not suitable for this region)
- ~~Region D~~ (not suitable for this region)

### **F** TERRAIN CATEGORY

---

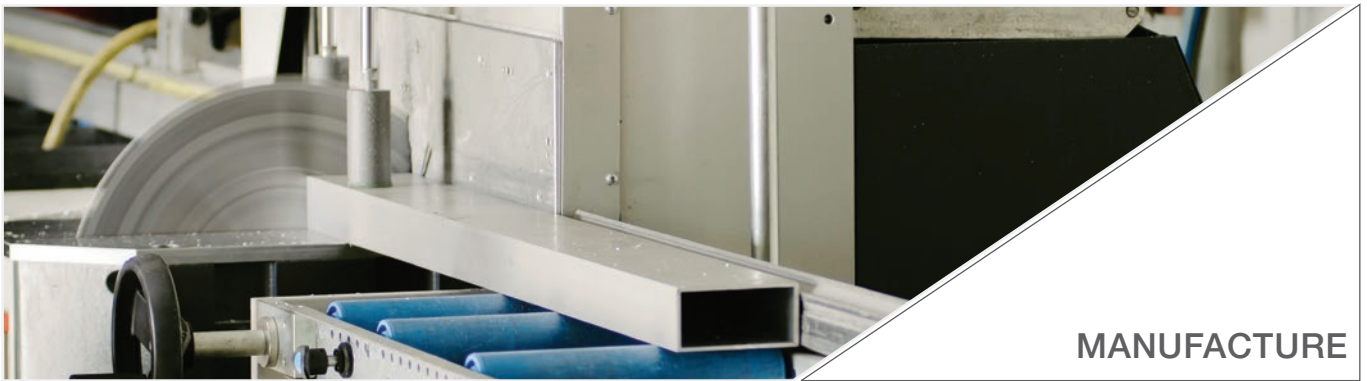
- 1
- 2
- 2.5
- 3 (not suitable for this region)
- 4 (not suitable for this region)

Arcadia reserves the right to use alternative similar products to Zinalume® and Colorbond® materials.

ARCADIA IS A COMPANY THAT OFFERS A PROFESSIONAL TEAM WITH DIVERSE EXPERTISE.



DESIGN



MANUFACTURE



PROJECT MANAGEMENT



MAINTENANCE

PROVIDING A FULL SPECTRUM OF SERVICES FROM CONCEPT TO COMPLETION FOR EVERY ASPECT OF YOUR PROJECT.

## COMPANY NAME

Arcadia Global Pty. Ltd.

ABN No 62 008 668 291

## FOUNDED

1927

## EMAIL

admin@grouparcadia.com.au

## WEBSITE

WWW.GROUPARCADIA.COM.AU



SYDNEY - MELBOURNE - BRISBANE - ADELAIDE - PERTH - DARWIN

PHONE 1300 458 458

EMAIL sales@grouparcadia.com.au

©2017 Arcadia Global Pty. Ltd.

This document is protected by copyright and all rights are reserved. No part of it may be reproduced, stored in a retrieval system or transmitted in any form by any means electronic, mechanical, photocopying, recording or otherwise without the prior written permission of the owner of the Copyright, or pursuant to the terms of a licence granted by behalf of the Copyright owner.