

An aerial, high-angle photograph of a city at night, showing a dense cluster of skyscrapers. The buildings are illuminated from within, creating a warm, golden glow that contrasts with the dark blue and black of the night sky. The perspective is looking down from a high vantage point, showing the tops of the buildings and the streets below. The buildings have various architectural styles, including glass facades and solid concrete structures. The streets are visible, with some cars and lights. The overall atmosphere is one of a vibrant, modern urban environment.

Second Story Collection

Interface®

A contemporary monolithic collection.

Inspired by iconic city skylines, Second Story Collection quietly transforms corporate spaces, healthcare facilities, aged care homes as well as hotels. We say quiet, because we have kept patterns minimal.

The four patterns in this collection – Sublet™, Duplex™, Classic Seven™ and Brownstone™, connect to one another through common threads of ideas and colour and complement each other through subtle changes in scale, loft and contrast. Classic and timeless, it is now even easier to create a seamless flooring with Second Story.

Embracing simplicity in the colour palette, we let natural charcoals and greys calmly take centre stage. Simple patterns and subtle shading make way for a floor that has great aesthetics of broadloom but keeping to all the benefits of modularity. Second Story gives you space to feel good in, without the need for a fanfare. So you can create **+Positive spaces™**.

Although Interface is a global organisation, we manufacture locally. And Second Story is 100% carbon neutral like all our products across the world. Join us in creating a climate fit for life. **#ClimateTakeBack**

+Positive spaces™
Better products. Happier people. Healthier planet.







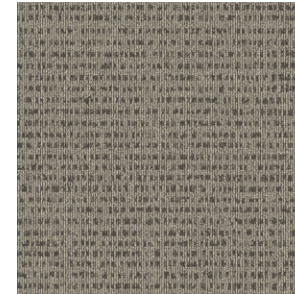
CARPET TILE DUPLEX COLOUR UPPER EAST
CARPET TILE SUBLET COLOUR UPPER EAST INSTALLED ASHLAR



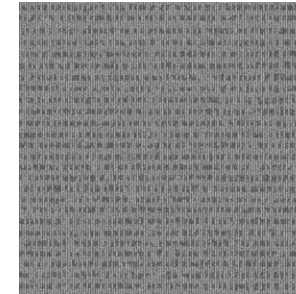
CARPET TILE DUPLEX COLOUR TURTLE BAY INSTALLED BRICK



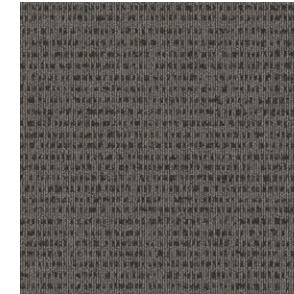
Sublet™ Colourline



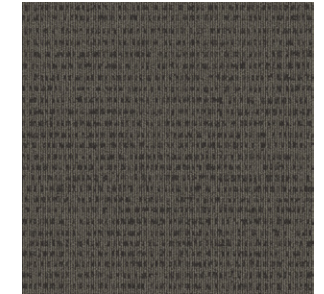
9325-004-000 Paddington



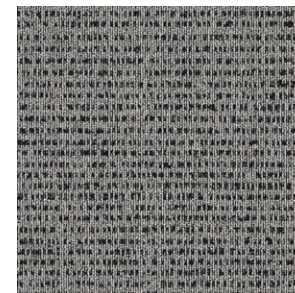
9325-005-000 St Kilda



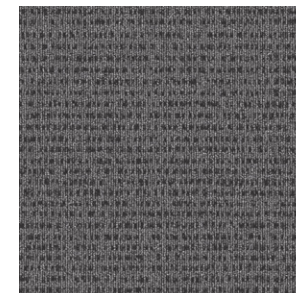
9325-007-000 Ponsonby



9325-006-000 Fortitude Valley



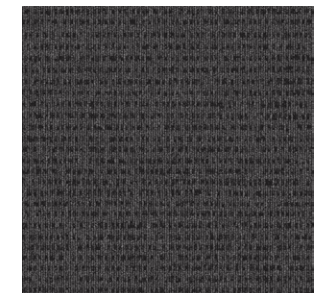
9325-001-000 Upper East



9325-008-000 Brooklyn



9325-002-000 Turtle Bay



9325-003-000 Soho

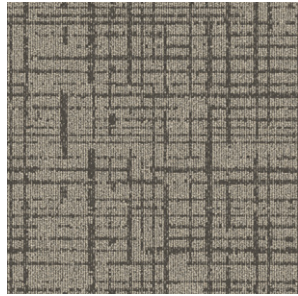
Specifications

Style Code	9325
Product Construction	Tufted Cut and Loop
Yarn System	100% Recycled Solution Dyed Nylon
Machine Gauge	5/64
Pile Thickness	3.3mm (± 0.5mm)
Total Thickness	6.2mm (± 0.5mm)
Tile Size	50x50cm
Area of Use	Commercial - Heavy Use
ACCS (Australia Only)	Commercial Heavy Duty & Stairs
Lifetime Antimicrobial	Intersept®
Soil/Stain Protection	Protekt2®
Installation Methods	Ashlar

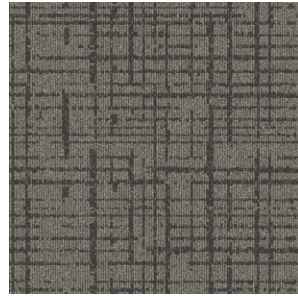


ASHLAR

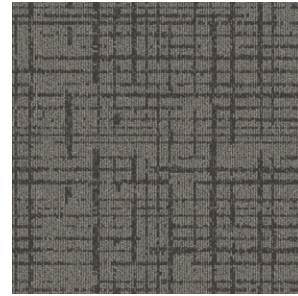
Duplex™ Colourline



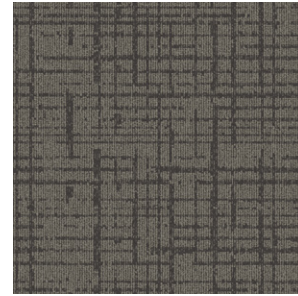
9326-004-000 Paddington



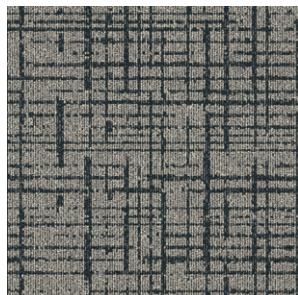
9326-005-000 St Kilda



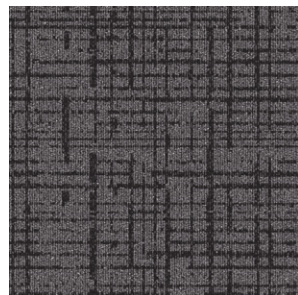
9326-007-000 Ponsonby



9326-006-000 Fortitude Valley



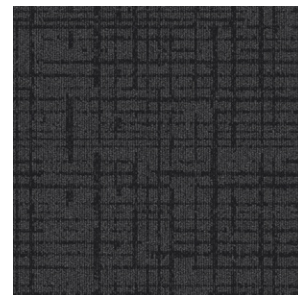
9326-001-000 Upper East



9326-008-000 Brooklyn



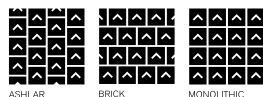
9326-002-000 Turtle Bay



9326-003-000 Soho

Specifications

Style Code	9326
Product Construction	Tufted Cut and Loop
Yarn System	100% Recycled Solution Dyed Nylon
Machine Gauge	5/64
Pile Thickness	3.7mm (± 0.5mm)
Total Thickness	6.7mm (± 0.5mm)
Tile Size	50x50cm
Area of Use	Commercial - Heavy Use
ACCS (Australia Only)	Commercial Extra Heavy Duty & Stairs
Lifetime Antimicrobial	Intersept®
Soil/Stain Protection	Protekt2®
Installation Methods	Ashlar, Brick, Monolithic

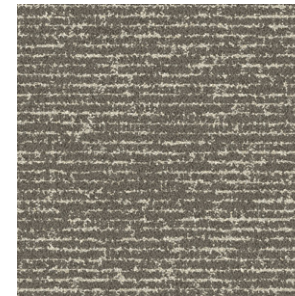


ASHLAR BRICK MONOLITHIC

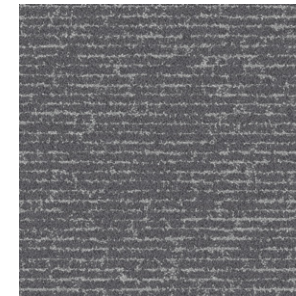




Classic Seven™ Colourline



9328-004-000 Paddington



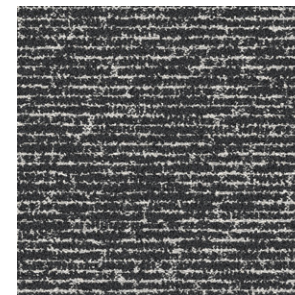
9328-005-000 St Kilda



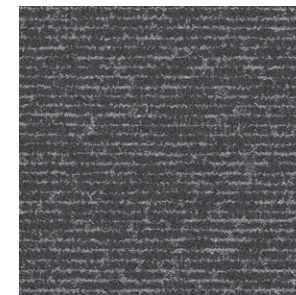
9328-007-000 Ponsonby



9328-006-000 Fortitude Valley



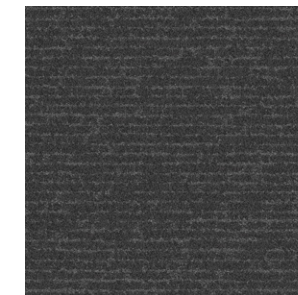
9328-001-000 Upper East



9328-008-000 Brooklyn



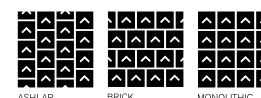
9328-002-000 Turtle Bay



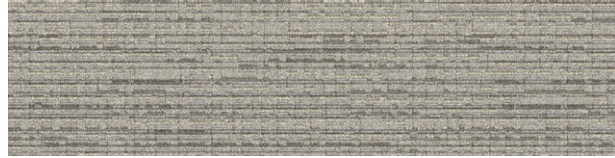
9328-003-000 Soho

Specifications

Style Code	9328
Product Construction	Tufted Textured Tip Sheared
Yarn System	100% Recycled Solution Dyed Nylon
Machine Gauge	1/10
Pile Thickness	4.2mm (± 0.5mm)
Total Thickness	7.8mm (± 0.5mm)
Tile Size	50x50cm
Area of Use	Commercial - Heavy Use
ACCS (Australia Only)	Commercial Extra Heavy Duty & Stairs
Lifetime Antimicrobial	Intersept®
Soil/Stain Protection	Protekt2®
Installation Methods	Ashlar, Brick, Monolithic



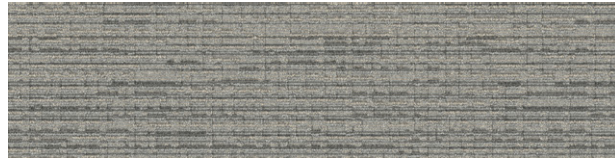
Brownstone™ Colourline



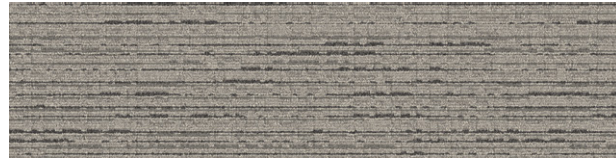
9327-004-000 Paddington



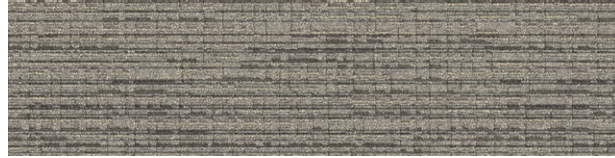
9327-001-000 Upper East



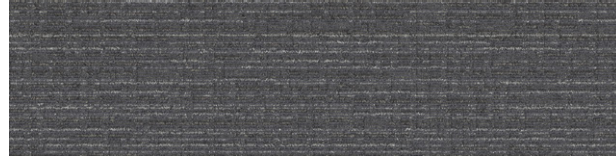
9327-005-000 St Kilda



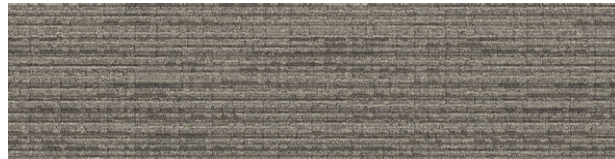
9327-008-000 Brooklyn



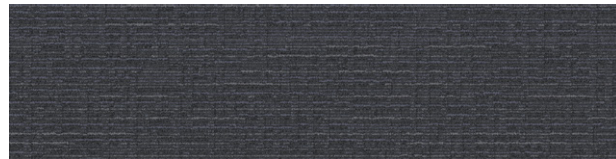
9327-007-000 Ponsonby



9327-002-000 Turtle Bay



9327-006-000 Fortitude Valley



9327-003-000 Soho

Specifications

Style Code	9327
Product Construction	Tufted Textured Loop
Yarn System	100% Recycled Solution Dyed Nylon
Machine Gauge	1/10
Pile Thickness	4.4mm (± 0.5mm)
Total Thickness	7.4mm (± 0.5mm)
Tile Size	25x100cm
Area of Use	Commercial - Heavy Use
ACCS (Australia Only)	Commercial Extra Heavy Duty & Stairs
Lifetime Antimicrobial	Intersept®
Soil/Stain Protection	Protekt2®
Installation Methods	Ashlar



ASHLAR



CARPET TILE BROWNSTONE COLOUR SOHO
 CARPET TILE SUBLET COLOUR TURTLE BAY INSTALLED ASHLAR



Why Our Modular Flooring?



Modular Flooring

Performance and flexibility. Interface's standard backing systems set the industry standard for modular performance. Tiles stay on the floor with no upcurl, no tapping and no rippling effect, yet are easy to selectively replace. Our modular carpet is easier to handle than bulky roll carpet and produces an average of just 2-5% waste compared to roll carpet's average of 15%. And it installs seamlessly with our LVT, no transition strips needed.



Carbon Neutral Floors™

Create a climate fit for life. All Interface flooring sold globally is third party verified carbon neutral across the entire product lifecycle. We've taken a holistic approach to achieve carbon neutrality, first through reducing the carbon footprint of our products and then using carbon offsets for the remainder, including the emissions from raw materials, our manufacturing processes and product use to end of life.



TacTiles®

No glue installation. Our revolutionary TacTiles installation system eliminates the need for glue, adhering tiles securely together to form a floor that "floats" for greater flexibility, easier replacement and long-term performance. The result? Less mess, less waste and virtually no VOCs, not to mention an environmental footprint that is over 90% lower than that of traditional glue adhesives.



Intersept®

Mold protection. Our proprietary preservative, Intersept, protects our modular carpet against mould growth and odour-causing bacteria—guaranteed. Intersept treated carpet, with proper maintenance, shows no mould or bacterial growth when tested as per the ASTM E2471 Standard Test Method. Intersept is EPA-approved for safe use in carpet, water insoluble and contains no halogens, heavy metals, phenols or formaldehyde.



Protekt®

Stain protection. The life and performance of your flooring is extended with Protekt, our patented stain resistant coating. Protekt uses advanced technology to provide a lasting barrier against permanent soiling and staining, which simplifies the cleaning process and enhances the longevity of your carpet.



ReEntry

At Interface, an end of life solution of our products is a reality. ReEntry is our innovative programme to reclaim materials used in our product. Taking back our product at end of life is a service we provide our customers to ensure that none of the products they use will end up in landfill. Whether it is recycling into new product or re-purposing, we see our customer's waste as an opportunity for new product life.



15-Year Warranty

Interface products are warranted for 15 years against excessive surface wear, edge ravel, backing separation, shrinking, stretching and static electricity even under castor chair conditions.



Manufactured in Australia

Offering local responsiveness and a global experience. We are embedded within the same communities as our customers to help us build relationships that are collaborative, committed and productive. We manufacture carpet tile out of South West Sydney, NSW from beginning to end, including inspection, boxing and shipment. You can be proud of contributing to our local economies and environment.

Third Party Certifications

Our EPDs and certifications contribute credits towards Green Building Council's Green Star® rating system.

Green Star credits are approved by the Green Building Councils of Australia and New Zealand. The internationally-recognised Green Star rating system provides independent verification that a building or community project is sustainable. Developed by the Green Building Council of Australia, Green Star is Australia's only national, voluntary, sustainability rating system for buildings and communities.



Environmental Product Declaration (EPD) –

The Environmental Product Declaration (EPD) is a third party verified environmental certification classified as Type III that quantifies and verifies the lifecycle impacts of products and goods according to the International Standards Organization (ISO) 14025, 14040, 14044 and EN 15804. EPDs help customers that are environmentally driven to evaluate the performance of a product and to make the best decision when choosing a product. All Interface products have EPDs.



Global GreenTag GreenRate

Level A – Global GreenTag's GreenRate certification is a product rating system recognised by the Green Building Council of Australia, New Zealand and South Africa. It has been set up to meet the criteria of the Green Star® "Sustainable Products" credits. All Interface products are certified "Level A".



Environmental Certification Scheme Level 4 –

ECS-certified carpet manufacturers must adhere to a code of practice that details performance standards for raw materials, manufacturing, in-service use and end-of-life treatment. Interface flooring holds the highest grading under ECS.



Best Practice Guidelines for PVC –

A comprehensive standard for better PVC developed by the Green Building Council of Australia under its Green Star programme. Interface holds Lloyd's Statement of Compliance (Green Building Council of Australia Best Practice Guidelines 2013) for Best Practice PVC for all products made in Australia.

All Interface manufacturing facilities in the Asia Pacific region maintain registration to ISO 9001 Quality Management Systems and ISO 14001 Environmental Management Systems.

Production specifications are subject to normal manufacturing tolerances and may be changed without notice. Slight variation in colour among different production lots are normal and should be considered in the overall installation plan. Products covered by manufacturer's written warranty only. All other warranties, including without limitation any implied warranties of merchantability or fitness for particular purpose, are hereby disclaimed. Contact your representative for written warranty information.

www.interface.com

Australia

Interface Australia
local toll free: 1800 804 361

South East Asia

Interface Asia
tel: +65 6478 1510

South Korea

Interface South Korea
tel: +82 2 555 1734

Japan

Interface Japan
tel: +81 3 5733 5211

India

Interface India
tel: +91 80 4613 1313

Beijing

Interface China
tel: +86 10 6590 7810

Hong Kong

Interface China
tel: +852 2802 0838

Shanghai

Interface China
tel: +86 21 6340 3868



Climate change is undeniable. And reversible. Our mission is to prove it.
Join the #ClimateTakeBack and help create a climate fit for life.