



ROOFING & WATERPROOFING 2019/20 PRODUCT CATALOGUE

BUILDING TRUST



SIKA – LEADING SOLUTIONS IN CONSTRUCTION & INDUSTRY



- On 5 continents
- In 100 countries
- More than 170 production and marketing companies
- 18,000 employees worldwide

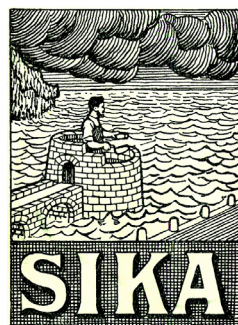
Sika is a specialty chemicals company with a leading position in the development and production of systems and products for bonding, sealing, damping, reinforcing and protecting in the building sector and the motor vehicle industry. Sika has subsidiaries in 100 countries around the world and manufactures in

over 200 factories. We have more than 18,000 employees and generate annual sales of CHF 6.25 billion.

SIKA A COMPANY WITH MORE THAN 100 YEARS OF HISTORY



Sika Zurich



The history of Sika began in 1910, when Kaspar Winkler, the founder of Sika, invented Sika-1, a quick-setting waterproofing admixture for mortar, used to waterproof the Gotthard Tunnel, thus enabling the Swiss railway company to electrify this important connection between Northern and Southern Europe. Kaspar Winkler recognized an upcoming global need for his “trail-blazing” admixtures and launched

subsidiaries around the world. Already in the 1930s, 15 Sika subsidiaries in Europe, USA, Argentina, Brazil and Japan established new construction chemicals markets.

Today Sika is the global technology and market leader in specialty chemicals for Construction and Industry, providing complete systems and problem solutions.

PVC Membranes 4

G410, G476, S327, F 4

Fastener 7

Sarnafast® SBF-6.0 7
Sarnafast® SBF-S-6.0 7
Sarnafast® Tubes SFT 8
Washer 8
Peel Rivets TPR-L 9

Accessories 11

Termination Bar 12
U Bar 12
Welding Cord 13
Sealant 13
Adhesive 14
Sarnavap 14
S-Unibase / Sika® Solarbase 15
Sika® UniAnchor 15
Green Roof Accessories - Chamber 16
Prefabricated Parts - Corner 16
Metal Sheet 17
Décor Profile 17
Stainless Steel Rainwater Drain (Vertical Outlet) 18
Leaf Guards 19
Scupper (Horizontal Outlet) 19
Felt 20
Lightening Conductor Clips 20
Walkway Pad 21
Cable Penetrations 21

Thermal Insulation Board 24

SarnaTherm-20/-21 (XPS) 24
SarnaTherm 52 (MW 160/180) 24

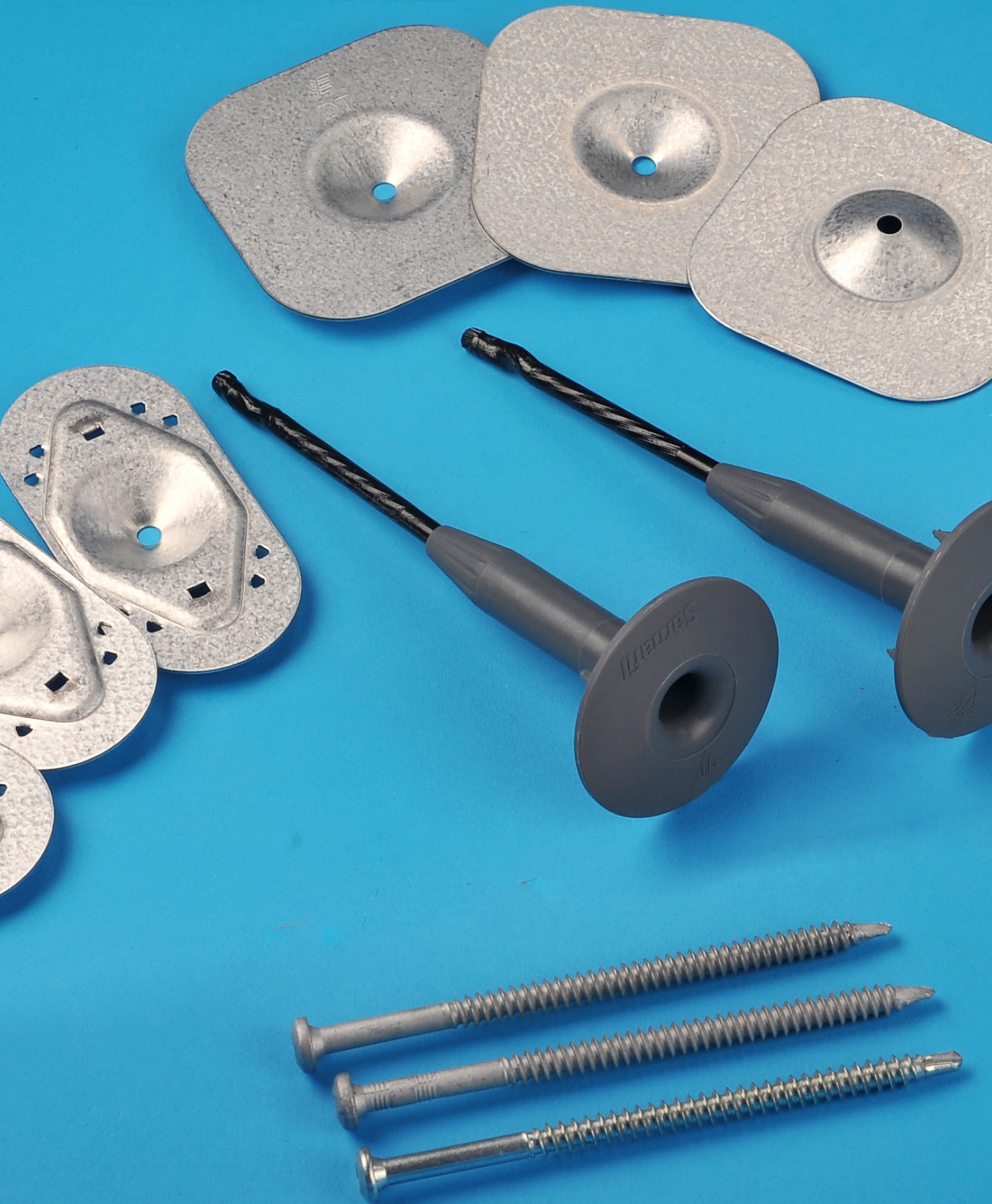


SARNAFIL®

System Category					Type	Article No.	Color	Dimensions				MTO
Mechanically Fastened System	Fully Adhered System	Loosely Laid System	Protected Roof System	Detailing				Length (m)	Width (m)	Total m ² /roll	Stocked	
•					G410-15 L Felt	421620	White*	20.00	2.00	40.00		x
•					G410-18 L Felt		White*	15.00	2.00	30.00		x
•					G410-20 L Felt	165549	White*	15.00	2.00	30.00		x
•					G410-15 L Felt	159443	Light grey	20.00	2.00	40.00	x	
•					G410-18 L Felt		Light grey	15.00	2.00	30.00		x
•					G410-20 L Felt	410898	Light grey	15.00	2.00	30.00	x	
	•				G410-15 L	414664	White*	20.00	2.00	40.00		x
	•				G410-18 L	550947	White*	15.00	2.00	30.00		x
	•				G410-20 L	421635	White*	15.00	2.00	30.00		x
	•				G410-15 L	129490	Light grey	20.00	2.00	40.00	x	
	•				G410-20 L	171342	Light Grey	15.00	2.00	30.00	x	
	•	•	•		G476-15	129491	Orange	20.00	2.00	40.00		x
	•	•	•		G476-20	162949	Orange	15.00	2.00	30.00		x
	•				G410-15 EL	560373	White	20.00	2.00	40.00		x
	•				G410-18 EL		White	15.00	2.00	30.00		x
	•				G410-20 EL	560372	White	15.00	2.00	30.00		
•					G410-15 L Felt 300	527777	White	20.00	2.00	40.00		x
•					G410-18 L Felt 300		White	20.00	2.00	40.00		x
•					G410-20 L Felt 300	165551	White	15.00	2.00	40.00		x
•					G410-15 L Felt 300	527960	Light grey	20.00	2.00	40.00		x
•					G410-18 L Felt 300		Light grey	15.00	2.00	40.00		x
•					G410-20 L Felt 300	528203	Light grey	15.00	2.00	40.00		x
•					S327-15 L	424676	White*	20.00	2.00	40.00		x
•					S327-18L	550946	White*	15.00	2.00	30.00		x
•					S327-20 L	424679	White*	15.00	2.00	30.00		x
•					S327-18 EL		White	15.00	2.00	30.00		x
•					S327-20 EL		White	15.00	2.00	30.00		x
•					S327-15 EL	181534	Light grey	20.00	2.00	40.00		x
•					S327-20EL	424652	Light grey	15.00	2.00	30.00		x

* more colors are available, please see color chart.





Sarnafast® SBF-6.0	7
Sarnafast® SBF-S-6.0	7
Sarnafast® Tubes SFT	8
Washer	8
Peel Rivets TPR-L	9

SARNAFAST® SBF-6.0

Article No.	Product Name	Unit of Sale	Packaging	Stock/MTO
429897	Sarnafast® SBF-6.0 x 35	1box	500pcs	MTO
429901	Sarnafast® SBF-6.0 x 60	1box	500pcs	MTO
429902	Sarnafast® SBF-6.0 x 70	1box	250pcs	MTO
429903	Sarnafast® SBF-6.0 x 80	1box	250pcs	MTO
429905	Sarnafast® SBF-6.0 x 100	1box	250pcs	MTO
456855	Sarnafast® SBF-6.0 x 120	1box	250pcs	MTO
456854	Sarnafast® SBF-6.0 x 140	1box	250pcs	MTO
429963	Sarnafast® SBF-6.0 x 160	1box	250pcs	MTO

☞ Multi-Purpose Fastener for metal, concrete or wood decks.

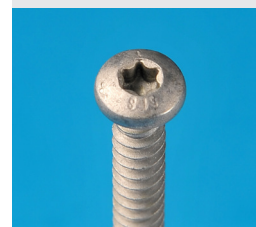
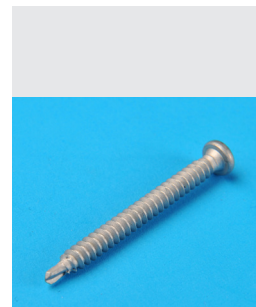
☞ Case hardened carbon steel

☞ Durocoat corrosion protection:

Resistance at 15 cycles Kesternich; test according to ETAG 006 - D.3.1. and FM requirements.

☞ Environment friendly, free of chromium VI.

☞ Can be combined with all Sarnafast® Washers



SARNAFAST® SBF-S-6.0

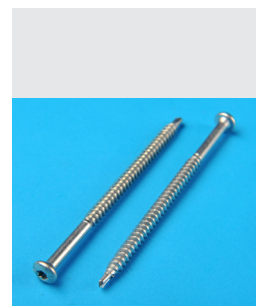
Article No.	Product Name	Unit of Sale	Packaging	Stock/MTO
429966	Sarnafast® SBF-S-6.0 x 60	1box	250pcs	MTO
429967	Sarnafast® SBF-S-6.0 x 80	1box	250pcs	MTO
429899	Sarnafast® SBF-S-6.0 x 100	1box	100pcs	MTO
457090	Sarnafast® SBF-S-6.0 x 140	1box	100pcs	MTO
429970	Sarnafast® SBF-S-6.0 x 160	1box	100pcs	MTO

☞ Multi-Purpose austenitic stainless steel fastener

☞ Grade AISI 316, European Standard 1.4401, grade A4

☞ Drill point and lead thread section: Fused and hardened carbon steel, length 14 mm; corrosion protected

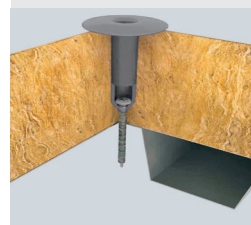
☞ Can be combined with all Sarnafast® Washers



SARNAFAST® TUBES SFT

Article No.	Product Name	Unit of Sale	Packaging	Stock / MTO
111154	Sarnafast® SFT-50 x 40	1box	500pcs	MTO
111155	Sarnafast® SFT-50 x 70	1box	500pcs	MTO
111156	Sarnafast® SFT-50 x 100	1box	500pcs	MTO
111158	Sarnafast® SFT-50 x 160	1box	500pcs	MTO

- ↗ Sarnafast® Tubes SFT in use with Fastener Sarnafast® SBF-6.0
- ↗ For spot fastening of single ply membranes:
 - Thermally broken fastening solution with no chance of cold bridging;
 - High quality Polyamide plastic provides resistance to very low temperatures and high pull-out values;
 - Compatible with the appropriate Sarnafast® screws fastening profiles;
 - Simple, economic solution for increased thickness insulation systems;
 - Reduced energy loss due to the insulating sleeve;
 - Ergonomic installation with the hand setting tool TP10, TP19 and TP30.



WASHERS

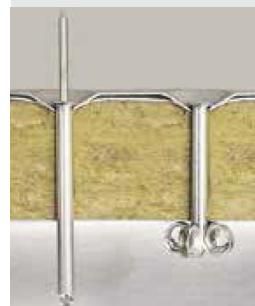
Article No.	Product Name	Unit of Sale	Packaging	Stock/ MTO
111097	Sarnafast® KTL-82 x 40 (For membrane on soft substrates)	1box	250pcs	MTO
111095	Sarnafast® IF/IG-C (For membrane on hard substrates)	1box	100pcs	MTO
111091	Sarnafast® DTL-70 x 70 (For insulation)	1box	100pcs	MTO

- ↗ Sarnafast® Washer in combination with Fastener Sarnafast® SBF-6.0 or Peel Rivet TRP-L.
- ↗ Resistance at 15 cycles Kesternich test according to ETAG 006 - D.3.1. and FM requirements.



PEEL RIVETS TPR-L

SFS Article No.	Product Name	Unit of Sale	Packaging	Stock/ MTO
1241233	TPR-L-6.3 x 38	1box	1000pcs	MTO
1241235	TPR-L-6.3 x 51	1box	1000pcs	MTO
1241237	TPR-L-6.3 x 64	1box	500pcs	MTO
1241241	TPR-L-6.3 x 76	1box	500pcs	MTO
1241242	TPR-L-6.3 x 88	1box	500pcs	MTO
1241244	TPR-L-6.3 x 102	1box	500pcs	MTO
1241246	TPR-L-6.3 x 127	1box	500pcs	MTO
1241248	TPR-L-6.3 x 152	1box	500pcs	MTO
1241249	TPR-L-6.3 x 178	1box	250pcs	MTO
1241250	TPR-L-6.3 x 203	1box	250pcs	MTO
1241251	TPR-L-6.3 x 229	1box	250pcs	MTO
1241252	TPR-L-6.3 x 254	1box	250pcs	MTO



- ↳ TPR Peel Rivet fastening system for critical sub-structures: Safe fixing whatever the sub-frame
High corrosion resistance (rivet sleeve manufactured from aluminium/ magnesium alloy, centre pin from zinc coated carbon steel);
Consistently high pullout values due to dedicated system design;
Center pin remains in the rivet sleeve;
Dynamic wind loads present no problem;
Can be combined with Sarnafast® Washers KTL, IF/IG-C, DTL-70x70 and U-Bar
- ↳ The TPR riveting system is safe for fixing to:
Aluminium sheeting, thin steel sheeting, thin concrete and timber and cement boards.



Termination Bar	13
U Bar	13
Welding Cord	14
Sealant	14
Adhesive	15
Sarnavap	15
S-Unibase / Sika® Solarbase	16
Sika® UniAnchor	16
Green Roof Accessories - Chamber	17
Prefabricated Parts - Corner	17
Metal Sheet	18
Décor Profile	18
Stainless Steel Rainwater Drain (Vertical Outlet)	19
Leaf Guards	20
Scupper (Horizontal Outlet)	20
Felt	21
Lightening Conductor Clips	21
Walkway Pad	22
Cable Penetrations	22

TERMINATION BAR

Article No.	Product Name	Unit of Sale	Dimensions (L x W x T)	Stock / MTO
154467	S-Termination Bar II 2000mm	1bar	2000 x 20 x 2mm	Stock
127647	S-Termination Bar III 2000mm	1bar	2000 x 35 x 2mm	Stock

↳ To be used for termination of Sarnafil® membranes on upstand. Sealant shall be used to seal the gap between termination bar and substrate.

* Made of aluminum.



U BAR

Article No.	Product Name	Unit of Sale	Dimensions (L x W x T)	Stock/ MTO
129495	S-U Bar 2000mm	1bar	2000 x 25 x 1mm	Stock

↳ To be used at the perimeter of roof or detail joints for reinforced fixation of Sarnafil® membrane. They shall be installed together with S-Welding Cord if necessary.

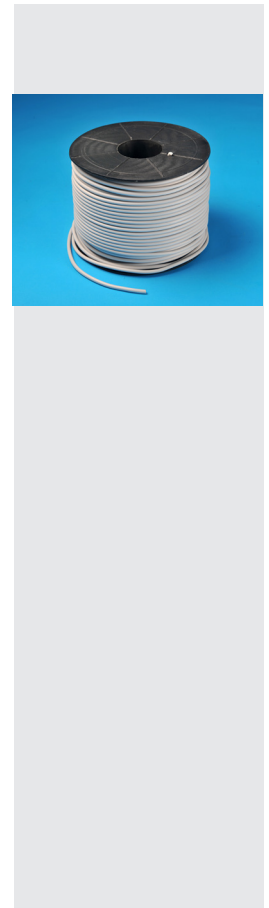
* Made of galvanised steel.



WELDING CORD

Article No.	Product Name	Color	Unit of Sale	Packaging	Stock / MTO
129500	S-Welding Cord PVC 4mm	light grey	1box	100m	MTO

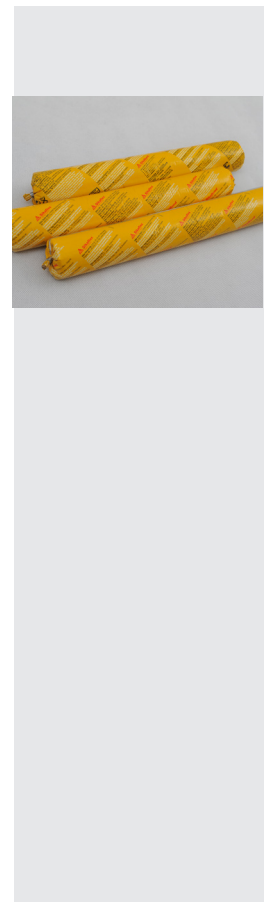
↪ S-Welding Cord is welded to the membrane along U Bar to resist pull forces (like wind up-lift) towards roof centre as reinforced perimeter fixation. S-Welding Cord helps distribute the load evenly and prevent slippage of the membrane.



SEALANT

Article No.	Product Name	Unit of Sale	Packaging	Stock / MTO
98791	Sikaflex®-11 FC	1box	600mlx20	Stock

↪ Sikaflex®-11 FC is a fast curing one-component polyurethane sealant/adhesive with permanent elasticity.



ADHESIVE

Article No.	Product Name	Unit of Sale	Packaging	Shelf Life	Stock / MTO
155199	Sarnacol® 2142	1 pail	15kg	9 months	Stock
480418	Sarnacol® 2152	1 pail	Part A: 16.8kg Part B: 3.2kg	12 months 6 months	MTO
150201	Sarnacol® 2170	1 pail	20kg	24 months	Stock
	Sika® RoofBond	Can	750ml	9 months	MTO

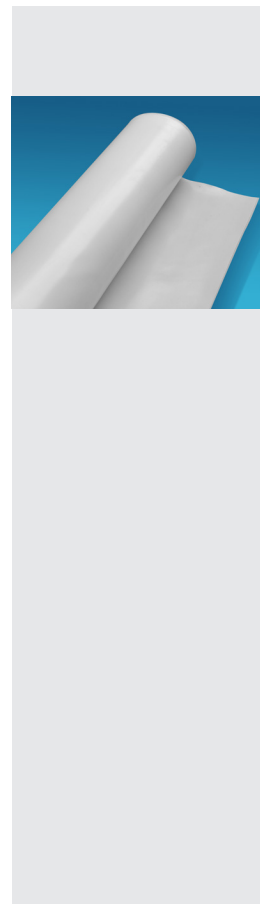
- ↻ Sarnacol® 2142 is an adhesive to bond felt backed Sarnafil® G-410 LF membranes to approved substrate types such as concrete, screed, plywood, timber board, fibre cement boards, PUR, PIR, XPS, MPS, EPS and Mineral Wool.
- ↻ Sarnacol® 2152 is an adhesive to bond Sarnafil® G-476 membranes, G-410-LF (exposed) and Sikaplan® WP 1120 to concrete.
- ↻ Sarnacol® 2170 is a contact adhesive to bond Sarnafil® G-410 L and felt backed Sarnafil® G-410 LF membranes on surfaces and Sarnafil® G-410 L membranes in perimeter, upstand and flashing areas.
- ↻ Sika® RoofBond is a polyurethane 1-part, fast curing, gun grade, foam adhesive that bonds insulation boards to various types of construction material substrates.



SARNAVAP

Article No.	Product Name	Unit of Sale	Dimensions (L x W x T)	Total m ² /roll	Stock / MTO
129497	S-Sarnavap 1000	1roll	42.6m x 4m x 0.3mm	170.4	MTO
129499	S-Sarnavap Tape	1box	20m x 10mm x 2mm	10	MTO

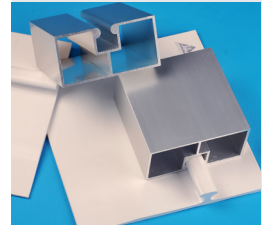
- ↻ S-Sarnavap is polyethylene based polymeric film. It is generally loosely laid and fixed by the mechanical fasteners for insulation or by the ballast on the system as a whole. S-Sarnavap can reduce the risk of condensation in roof build up (if thermal insulation is used) and resist internal air pressure (reducing the total wind load). Vapour Barrier must be air tight and should be properly sealed at the roof perimeter and all penetrations.
- ↻ S-Sarnavap Tape is one-component butyl-latex waterproofing adhesive tape. It is used for connections between Vapour Barriers, Vapour Barrier and steel, Vapour Barrier and smooth concrete to keep Vapour Barrier's continuity and air tightness. The tape is compatible with Sarnafil® membrane.



SIKA® ROOF BASE PVC

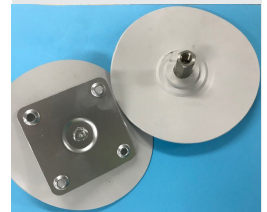
Article No.	Product Name	Color	Unit of Sale	Stocj/MTO
461137	SikaRoof® Base PVC	White	4pcs	Stock
493760	SikaRoof® Base PVC	Light grey	4pcs	Stock

↳ The SikaRoof® Base PVC is welded to the roofing membrane. Main usage is the fixing for air-condition units, cable tracks, pipe tracks, pumps, etc to the roof without penetrating the roofing membrane.



SIKA® ROOF ANCHOR-W PVC

Article No.	Product Name	Color	Unit of Sale	Stock / MTO
492290	SikaRoof® Anchor-W PVC	White	10pcs	Stock
491939	SikaRoof® Anchor-W PVC	Light Grey	10pcs	Stock

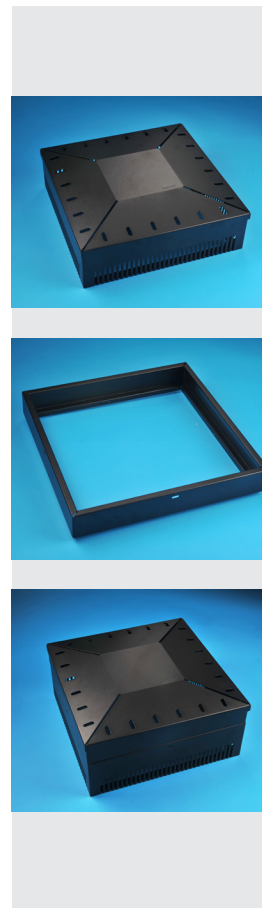


GREEN ROOF ACCESSORIES - CHAMBER

Article No.	Product Name	Color	Unit of Sale	Stock / MTO
451543	S-Inspection Chamber (Lid and Main part)	Black	1pc	MTO
451544	S-Inspection Chamber (Extension part)	Black	1pc	MTO

Usage is for green roofs. Especially when the roof rainwater drain (outlet) needs to be accessible at any time. S-Inspection Chamber (Lid and Main Part) is made of aluminum and black coated leaf guard protection.

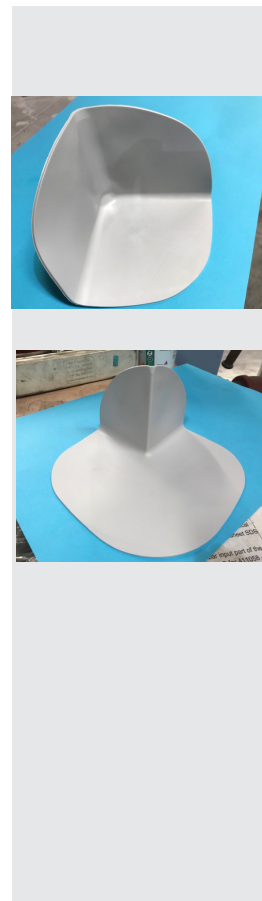
S-Inspection Chamber Extension is an accessory of Inspection chamber to gain an additional height. Extension part is 50mm high and can added to the S-Inspection Chamber as is needed for the site.



PREFABRICATED PARTS - CORNER

Article No.	Product Name	Color	Packaging	Stock / MTO
183646	Sarnafil S Corner IJ Ext	Std Grey	10	Stock
183648	Sarnafil S Corner IJ Int	Std Grey	10	Stock
183701	Sarnafil S Corner IJ	White	10	MTO
183694	Sarnafil S Corner IJ	White	10	MTO

The deep-drawn preformed corners heat formed from non-reinforced Sarnafil® membrane are used for corners in connection areas between horizontal and vertical surfaces. It ensures easy and fast installation and high waterproofing performance.

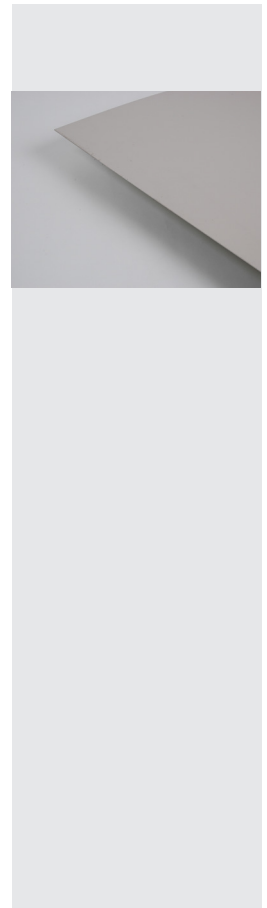


METAL SHEET

Article No.	Product Name	color	Unit of Sale	Stock / MTO
182702	Sarnafil® Metal Sheets 2000x1000mm	white (RAL 9016)	1sheet	MTO
451976	Sarnafil® Metal Sheets 2000x1000mm	Light Grey	1 Sheet	STOCK
168130	Sarnafil® Metal Sheets 2000x1000mm	Lead Grey	1sheet	MTO

↪ Sarnafil® Metal Sheets is a metal sheet with membrane laminated on one side. This enables the sheet to be easily joined to roof membrane using hot air welding. It is durable and can be easily shaped to various profiles to provide advanced detail solutions for roofing systems.

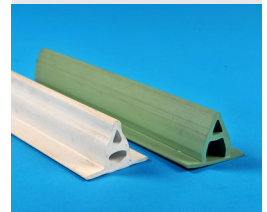
The popular application for the sheet is to make it as capping, flashing or termination at details. Sarnafil® Metal Sheet can be mechanically fixed on various substrates, such as concrete, metal deck etc, and the membrane is easily to be hot air welded on top side of the sheet by covering the fasteners.



DÉCOR PROFILE

Article No.	Product Name	Color	Unit of Sale	Packaging	Stock / MTO
168129	Sarnafil® Décor Profile	traffic white	1stick	3m	MTO
160356	Sarnafil® Décor Profile	light grey	1stick	3m	MTO
168130	Sarnafil® Décor Profile	Lead grey	1stick	3m	MTO

↪ Sarnafil® Décor Profile is a durable, PVC extrusion profile used to emulate the appearance of a standing seam metal roof on a Sarnafil® roof system. It is available in various colors to match your design needs. Décor profile can be easily welded to roofing membrane.

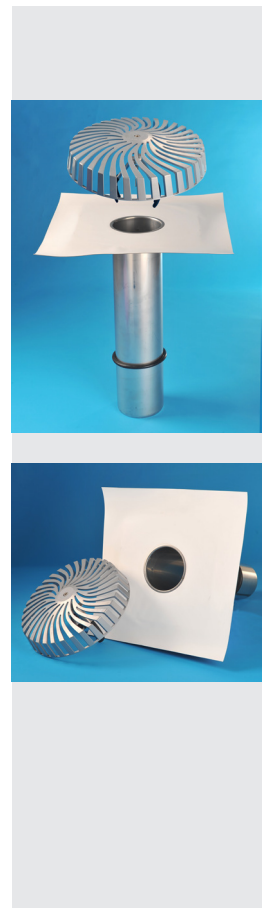


STAINLESS STEEL RAINWATER DRAIN (VERTICAL OUTLET)

Article No.	Product Name	Unit of Sale	Stock / MTO
508016	S-Drain SS 63 White	2pcs	MTO
533709	S-Drain SS 63 Light Grey	2pcs	STOCK
116983	S-Drain SS 75 White	2pcs	MTO
480802	S-Drain SS 75 Light Grey	2pcs	STOCK
154466	S-Drain SS 95 White	2pcs	MTO
480821	S-Drain SS 95 Light Grey	2pcs	STOCK
174864	S-Drain SS 145 White	2pcs	MTO
480492	S-Drain SS 145 Light Grey	2pcs	MTO
492535	S-Drain SS 185 White	2pcs	MTO
492534	S-Drain SS 185 Light Grey	2pcs	MTO
480724	S-Drain SS 200 White	1pc	MTO
480723	S-Drain SS 200 Light Grey	1pc	MTO

↳ S-Stainless Steel Rainwater Drain are made from high quality stainless steel integrated with Metal Sheets and Sarnafil® membrane. Its installation is fast and extremely reliable as the membrane integrated on the outlet can be tightly welded with Sarnafil® membrane used on the roof.

Note: Special dimension Ø can be ordered.



LEAF GUARDS

Article No.	Product Name	Unit of Sale	Stock / MTO
168156	S-Drain Turbine Leaf Guard Alu-short (with adjustable short legs up to Ø 145 outlet)	1pc	Stock
480386	S-Drain Turbine Leaf Guard Alu-long (with adjustable short legs for Ø 145 outlet above)	1pc	MTO
158698	S-Scupper Leaf Guard SS 110 (Stainless steel matel leaf guard with adjustable legs up to Ø 110)	2pc	MTO
478295	S-Scupper Leaf Guard SS 160 (Stainless steel matel leaf guard with adjustable legs)	2pc	MTO
422777	Monsoon leaf guard 195x195 (STS leafguard with higher flow rate. incl. Adjustable legs for outlets up to Ø 145)	1pc	MTO

☞ S-Drain Turbine Leaf Guard Alu is a turbine like metal leaf guard for vertical drains used on Sika Sarnafil roofing systems. It's strong enough for people to step on it. The center is strong enough for 150kg force.

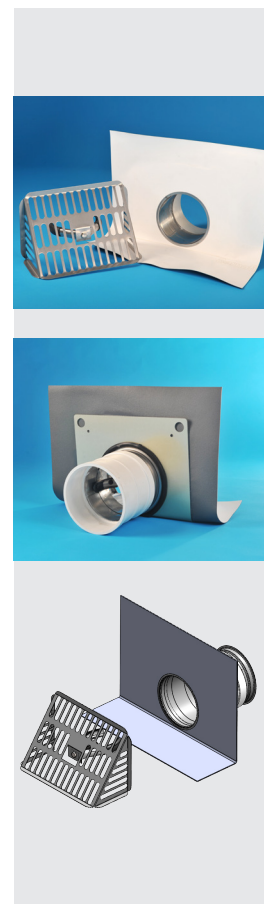
☞ S-Scupper Leaf Guard SS is a metal leaf guard for horizontal drains. S-Scupper Leaf Guard SS 110 is made of acid-resistant stainless steel.



SCUPPER (HORIZONTAL OUTLET)

Article No.	Product Name	Unit of Sale	Stock / MTO
480702	S-Scupper SS 75 White	1pc	MTO
483146	S-Scupper SS 75 Light Grey	1pc	MTO
158697	S-Scupper SS 110 White	1pc	MTO
480704	S-Scupper SS 110 Light Grey	1pc	MTO
478296	S-Scupper SS 160 White	1pc	MTO
480707	S-Scupper SS 160 Light Grey	1pc	MTO

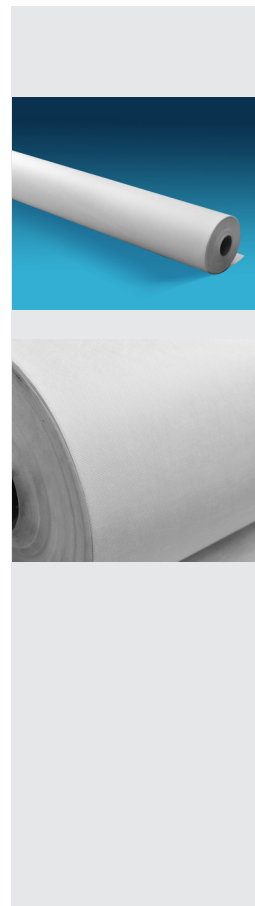
☞ S-Scupper SS is made from high quality stainless steel I (AISI 316L) integrated with Metal Sheets and Sika Sarnafil® PVC membrane. Its installation is fast and extremely reliable as the membrane integrated on the outlet can be tightly welded with Sika Sarnafil® PVC membrane. This secures a perfect fit between outlet and roofing membrane.



FELT

Article No.	Product Name	Dimensions (W x L)	Total m ² /roll	Unit of Sale	Stock / MTO
166826	S-Felt 80g/m ²	1.5mx400m	600	1 roll	MTO
425795	S-Felt 130g/m ²	2mx100m	200	1 roll	MTO
136050	S-Felt 200g/m ²	2mx100m	200	1 roll	MTO

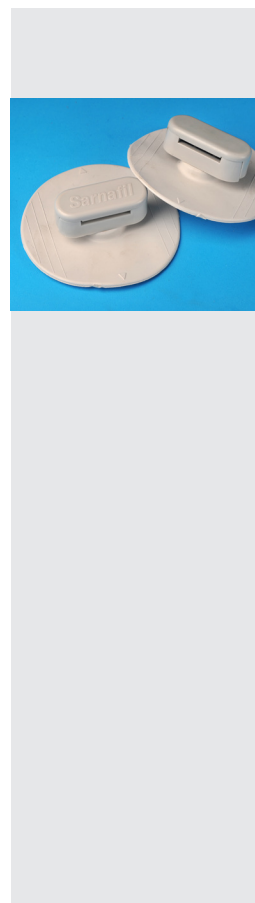
↳ S-Felt a White Geotextile based material. Separation layer between membrane and non-compatibility material like XPS etc..



LIGHTENING CONDUCTOR CLIPS

Article No.	Product Name	Color	Dimensions	Unit of Sale	Stock / MTO
182555	S-Lightening Conductor Clip-F25	light grey	25mm, Flat top	200pcs	Stock
486122	S-Lightening Conductor Clip-F25	white	25mm, Flat top	200pcs	MTO
425994	S-Lightening Conductor	light grey	Round top	200pcs	MTO
486121	S-Lightening Conductor	white	Round top	200pcs	MTO

↳ S-Lightning Conductor Clip is made of high performance polypropylene and PVC, UV stabilized against degradation by sunlight and non-brittle to prevent cold weather damage.



WALKWAY PAD

Article No.	Product Name	Dimensions	Unit of Sale	Stock / MTO
181454	S-Walkway Pad PVC CN	600mmx600mm	20pcs	Stock

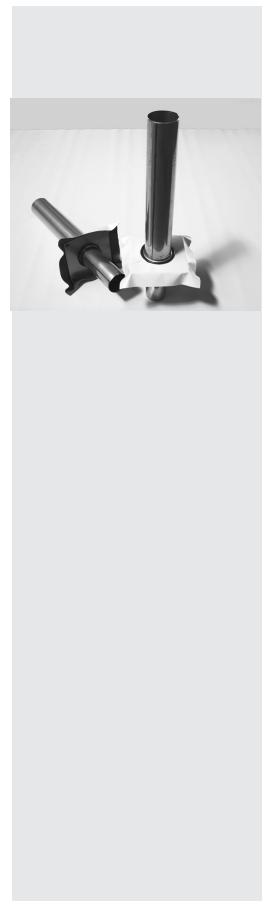
↪ Sarnafil® PVC Walkway Pad is a durable, traffic-bearing, heat-weldable rooftop walkway pad used on roof system. A unique drainage canal network on the underside promotes rapid drainage of rainwater in any direction.



CABLE PENETRATIONS

Article No.	Product Name	Color	Unit of Sale	Stock / MTO
425958	S-Cable Penetration 63-250/75-300	white	1pc	MTO
425958	S-Cable Penetration 63-250/75-300	light grey	1pc	MTO
425990	S-Cable Penetration 95-250/110-300	white	1pc	MTO
425990	S-Cable Penetration 95-250/110-300	light grey	1pc	MTO

↪ S-Cable Penetration is made from high quality stainless steel integrated with metal sheet and Sarnafil® membrane. It makes a very easy, reliable and professional way to penetrate the roof without introducing any weak joints to the roof membrane. The membrane integrated on the pipe can be tightly welded with Sarnafil® membrane used on the roof.

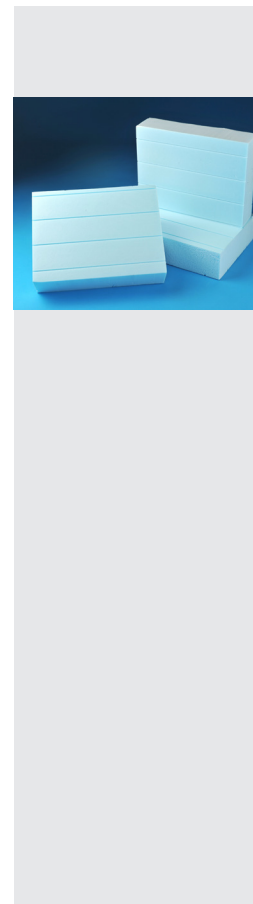




SarnaTherm-20/-21 (XPS)	25
SarnaTherm 52 (MW 160/180)	25

SARNATHERM-20/-21 (XPS)

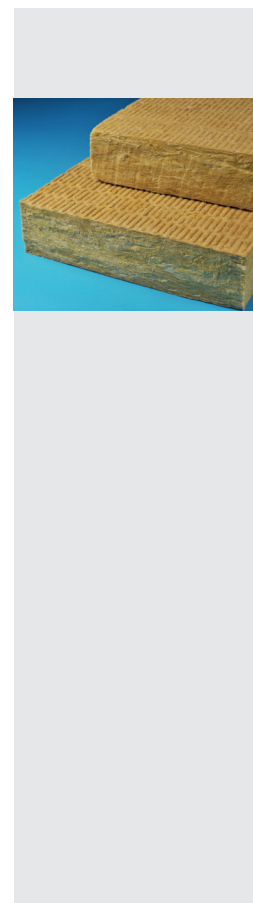
Article No.	Product Name	Color	Sales Unit	Total m ²	Stock/ MTO
425766	Sika® SarnaTherm-21, 30mm	-	10 boards	14.40	MTO
425768	Sika® SarnaTherm-21, 40mm	-	7 boards	10.08	MTO
425769	Sika® SarnaTherm-21, 50mm	-	6 boards	8.64	MTO



↪ SarnaTherm—Extruded polystyrene is cellular material; it is produced by an extrusion process to achieve a closed cell structure. Its thermal performance results from the thermal resistance of gas trapped in the cell structure and from that of the cell walls. SarnaTherm is light, moisture, resistant and easy for installation.

SARNATHERM 52 (MW 160/180)

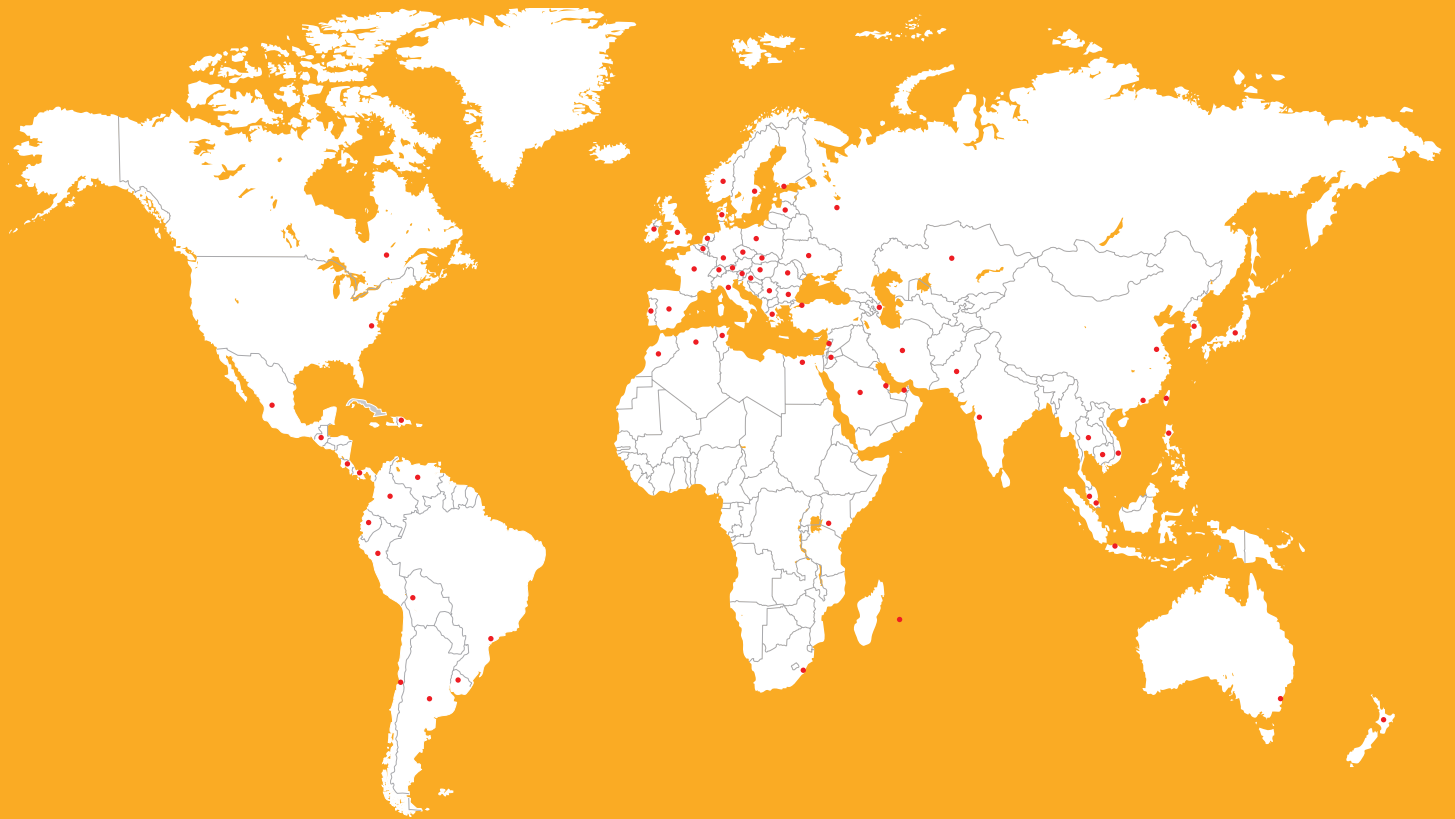
Article No.	Product Name	Color	Sales Unit	Total m ²	Stock/ MTO
468174	Sika® SarnaTherm-160, 40mm	-	6 boards	4.32	MTO
468175	Sika® SarnaTherm-160, 50mm	-	6 boards	4.32	MTO
468176	Sika® SarnaTherm-160, 60mm	-	6 boards	4.32	MTO
468164	Sika® SarnaTherm-180, 40mm	-	6 boards	4.32	MTO
468163	Sika® SarnaTherm-180, 50mm	-	6 boards	4.32	MTO
468173	Sika® SarnaTherm-180, 60mm	-	6 boards	4.32	MTO



↪ SarnaTherm-160/180 is a rock wool insulation board based on high quality wackle or dolomite. The boards are part of the Sika® flat roof system. The manufacture steps of the SarnaTherm rock wool thermal insulation board are: Using a cupola furnace to melt dolomite; Putting the melted dolomite into an four-axis centrifugal machine to turn it into fibres; Adding small amount of binder and compressing it together; Cutting after consolidation.



GLOBAL BUT LOCAL PARTNERSHIP



SIKA PVC MEMBRANE YOUR SAFE CHOICE

WE ARE SIKA

Sika is a specialty chemicals company with a leading position in the development and production of systems and products for bonding, sealing, damping, reinforcing and protecting in the building sector and the motor vehicle industry. Sika's product lines feature concrete admixtures, mortars, sealants and adhesives, structural strengthening systems, flooring as well as roofing and waterproofing systems.

Our most current General Sales Conditions shall apply.
Please consult the Data Sheet prior to any use and processing.



SIKA AUSTRALIA PTY LTD

55 Elizabeth Street,
Wetherill Park, NSW 2164
Australia

Phone: 1300 22 33 48
aus.sika.com

BUILDING TRUST

