



design architecture
wood wool concentration
well-being ecology
worldwide colours sustainable acoustic solutions

walls performance references
nature timeless green label
ceilings premium brand room atmosphere

wood wool concentration
well-being architecture
design ecology infrastructure performance
colours timeless nature education
entertainment worldwide commercial green label
ceilings premium brand room atmosphere
walls office sports & leisure

Pestalozzischule, Schwäbisch Gmünd, Germany, Heradesign *superfine*



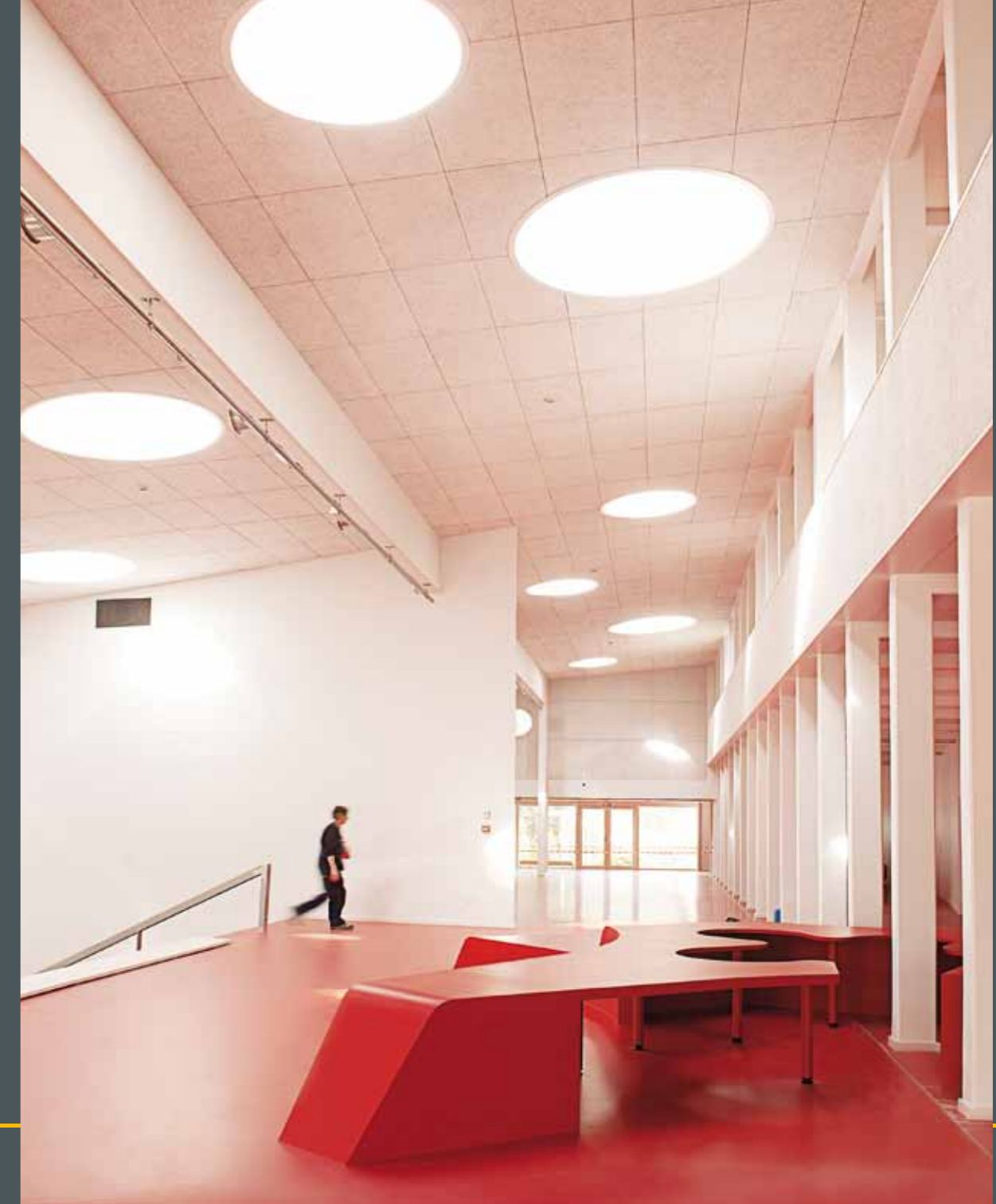
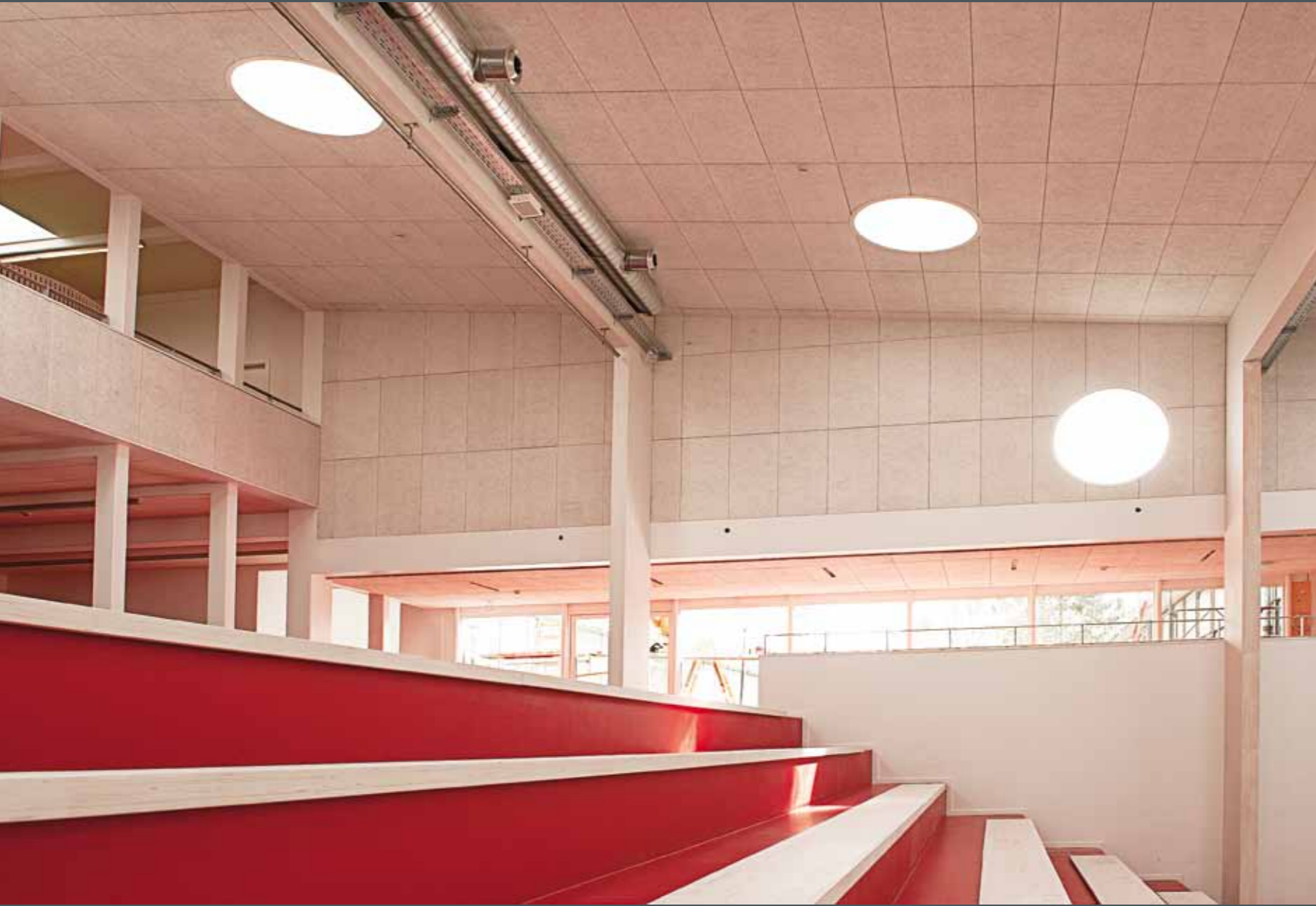
Photo credits: © Patricia Neligan & SOMAA Architects, 2010



Haus des Kindes, Golßen, Germany, Heradesign *superfine*



Kindergarten, Copenhagen, Denmark, Heradesign *superfine*



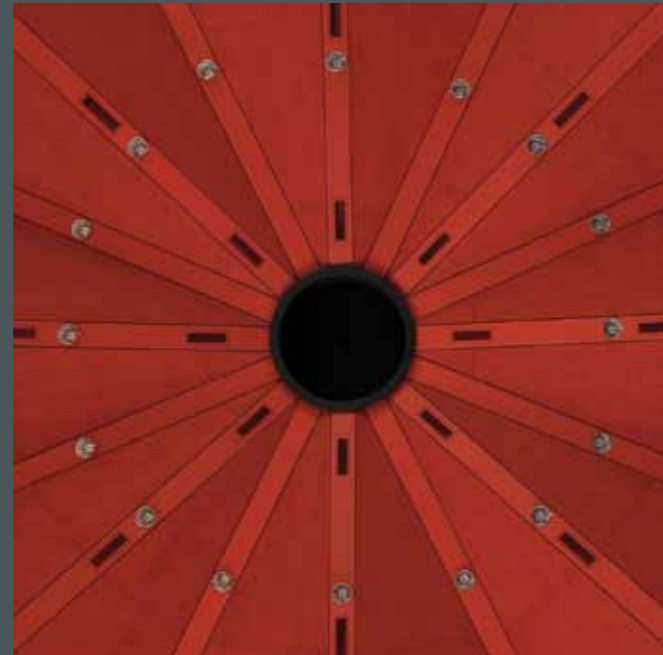


Biblioteca Vicalvaro, Spain, Heradesign *superfine*



School, Laken, Belgium, Heradesign *fine*

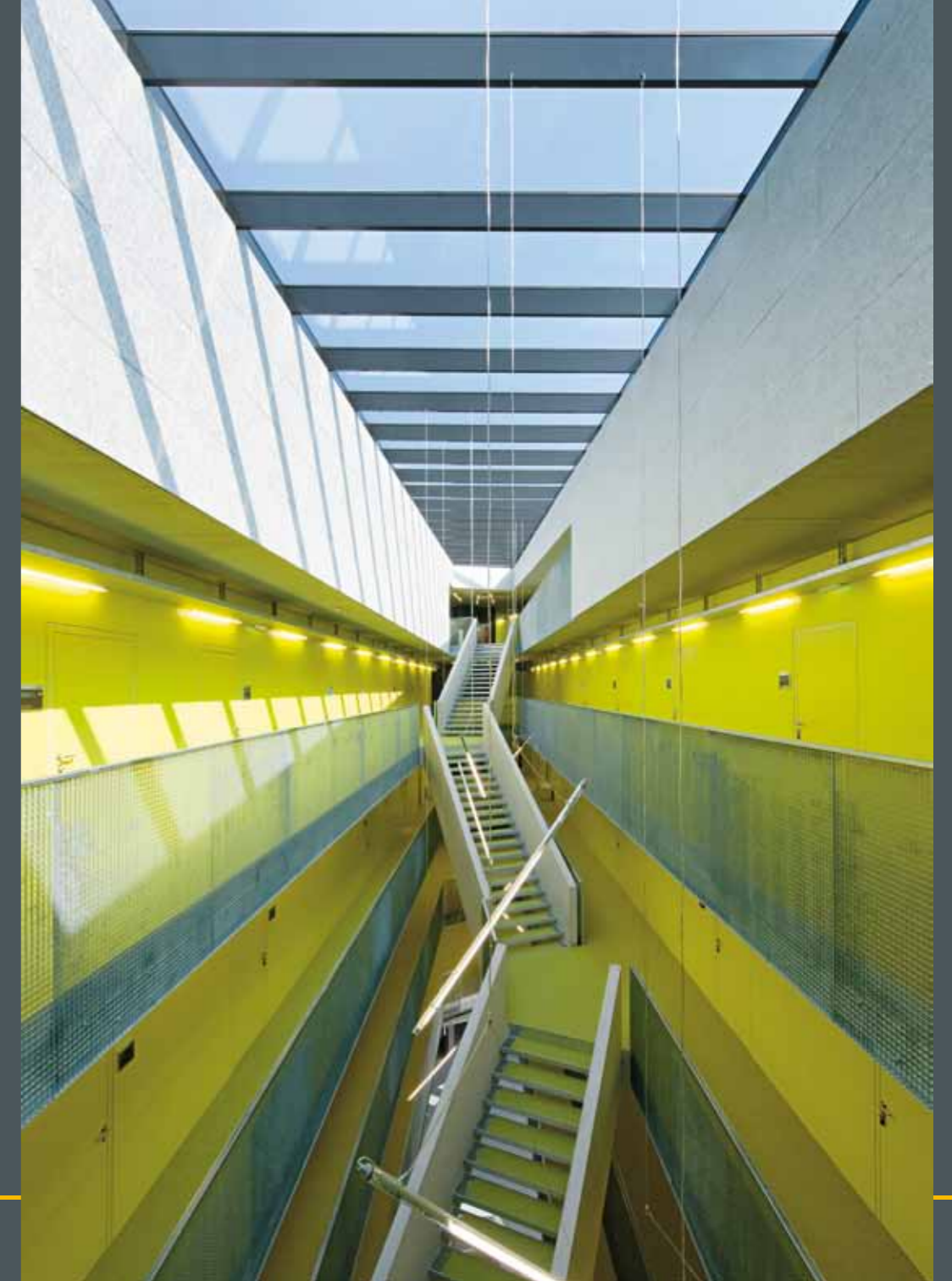
Photo credits: © bart gosselin photography



Erasmus University, Rotterdam, the Netherlands, Heradesign *superfine*

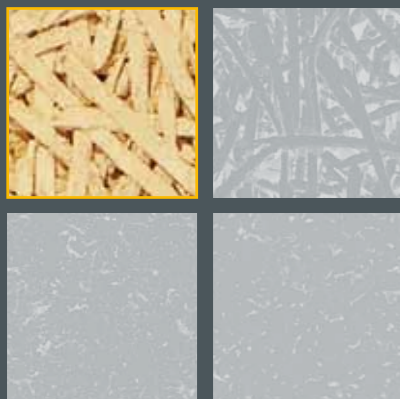


Science Park, Linz, Austria,
Heradesign *superfine*





Doha Independent Prep. School for Boys, Doha, Qatar,
Heradesign superfine

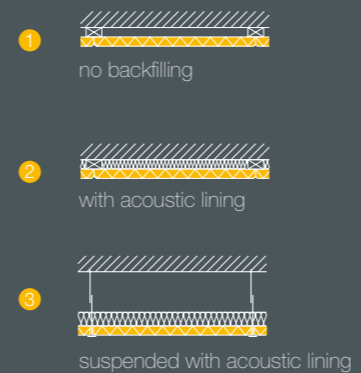
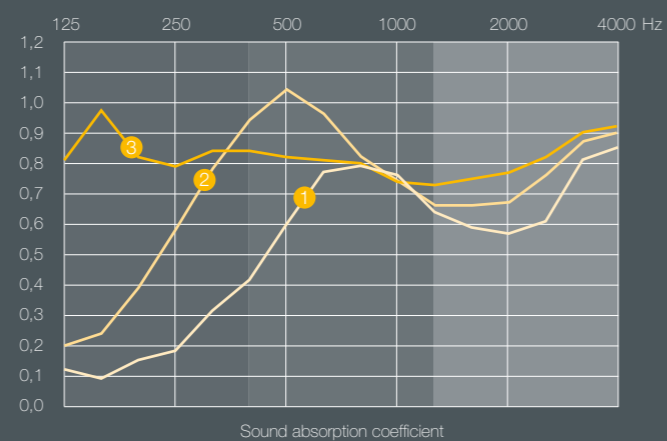


Heradesign® fine

1-layer magnesite bonded wood wool acoustic panel (fibre width 2 mm). Characteristic surface structure - building biology recommended.

Nominal size mm	600 x 600 1200 x 600	625x625 1250x625	
Thickness mm	15	25	35
Weight kg/m ²	8,2	12,4	16,3

- Almost any colour from international colour schemes (RAL, NTSC, StoColor etc) can be selected
- Sound absorption value α_w up to 0,90
- Reaction to fire according to EN 13501-1: B-s1, d0



wood wool concentration
well-being ecology architecture
design colours infrastructure performance
nature sports & leisure
entertainment worldwide commercial green label
ceilings premium brand room atmosphere
walls timeless office education



Alhóndiga, cultural centre, Bilbao, Spain, Heradesign *fine*



Fitness center, Olympic Swimming Hall, Munich, Germany, Heradesign *superfine*





Sports center, Bieruń, Poland, Heradesign *superfine*



Swimming hall, Międzyrzecz, Poland,
Heradesign *superfine*



Sports hall, Słomniki, Poland, Heradesign *fine*





Stubaitaler Gletscherbahnen, Austria, Heradesign *fine*



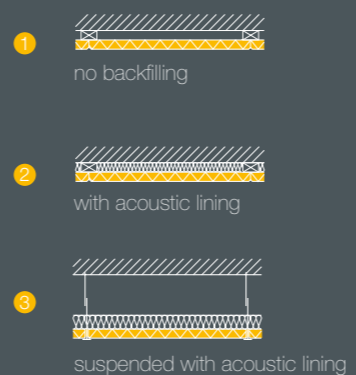
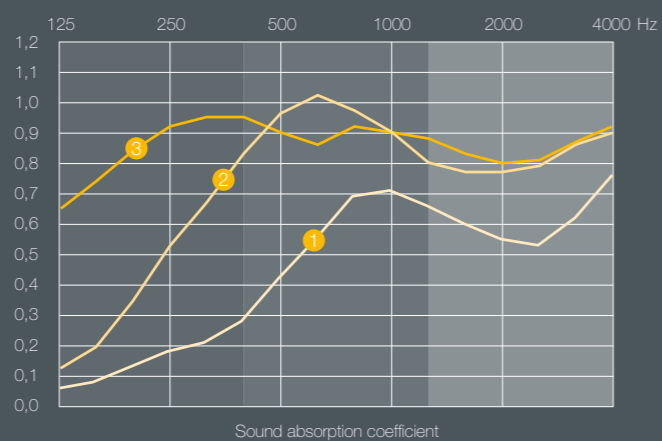


Heradesign[®] *superfine*

1-layer magnesite bonded wood wool acoustic panel (fibre width 1 mm). Exquisite surface structure - building biology recommended.

Nominal size mm	600 x 600 1200 x 600	625x625 1250x625	
Thickness mm	15	25	35
Weight kg/m ²	7,8	11,3	15,0

- Almost any colour from international colour schemes (RAL, NTSC, StoColor etc) can be selected
- Sound absorption value α_w up to 0,95
- Reaction to fire according to EN 13501-1: B-s1, d0



wood wool concentration
well-being ecology architecture
design sports & leisure performance
colours nature infrastructure
entertainment worldwide commercial green label
ceilings premium brand room atmosphere
walls timeless office education

International Airport, Zaventem, Belgium, Heradesign *superfine*

Photo credits: © bart gosselin photography

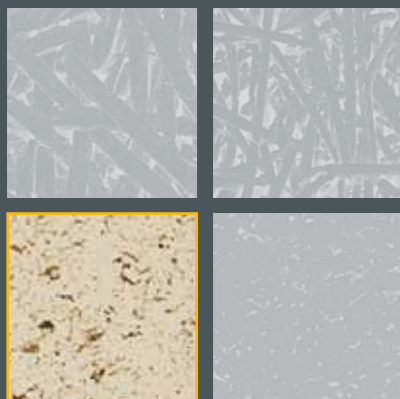




Mental Hospital, Helsingør, Denmark, Heradesign *superfine*





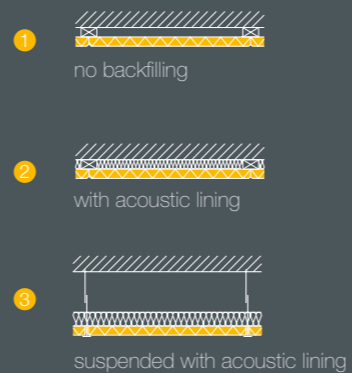
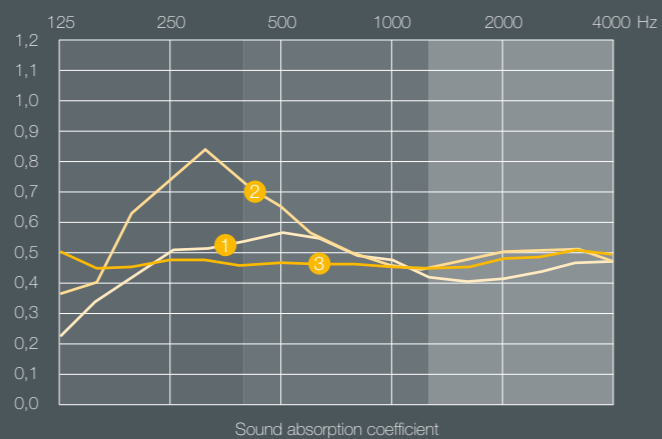


Heradesign® *micro*

1-layer magnesite bonded wood wool acoustic panel with fine pored surface - building biology recommended.

Nominal size mm	600 x 600 1200 x 600	625x625 1250x625
Thickness mm	25	35
Weight kg/m ²	15,0	19,0

- Almost any colour from international colour schemes (RAL, NTSC, StoColor etc) can be selected
- Sound absorption value α_w up to 0,55
- Reaction to fire according to EN 13501-1: B-s1, d0



wood wool concentration
well-being ecology architecture
design sports & leisure performance
colours nature office
infrastructure green label
entertainment worldwide commercial
ceilings premium brand room atmosphere
walls timeless education



HUG AG, Malters, Switzerland, Heradesign *superfine*



Unilever Headquarters, Hamburg, Germany,
Heradesign *superfine*



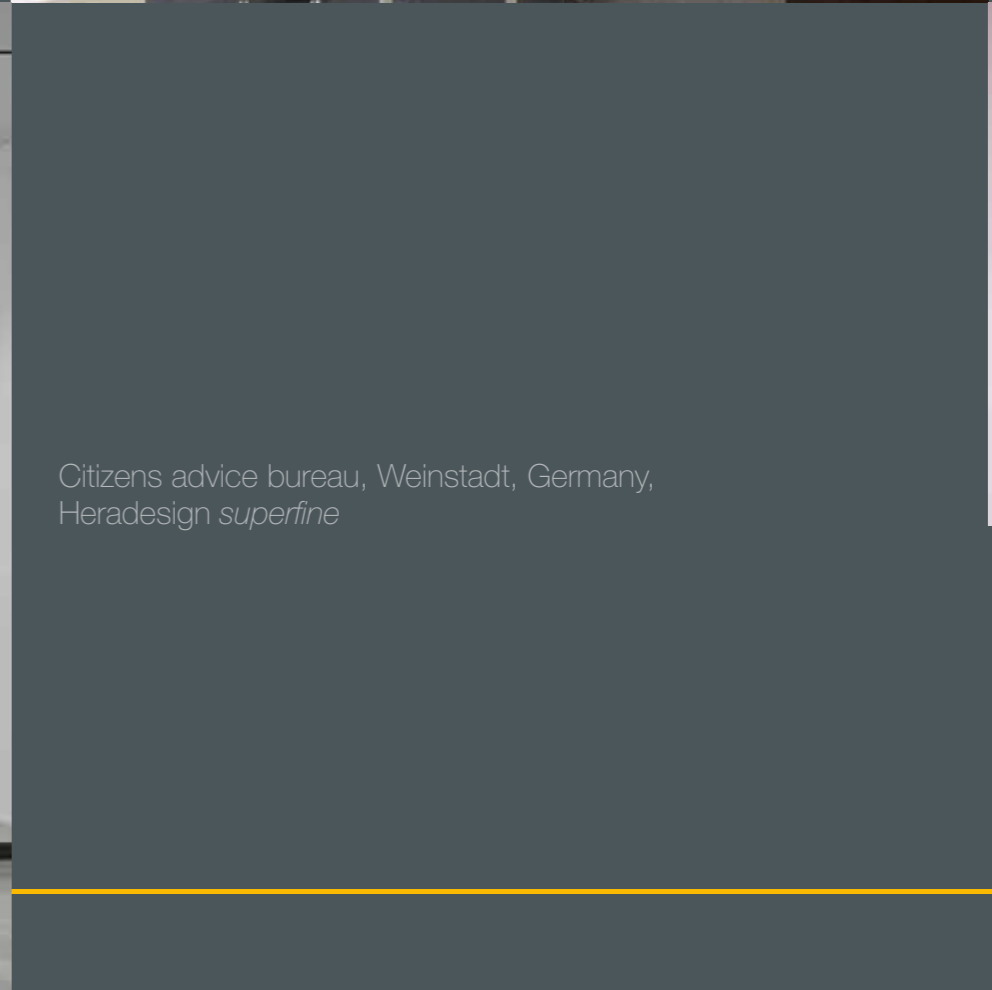


Kiska Design, Anif/Salzburg, Austria, Heradesign *superfine*

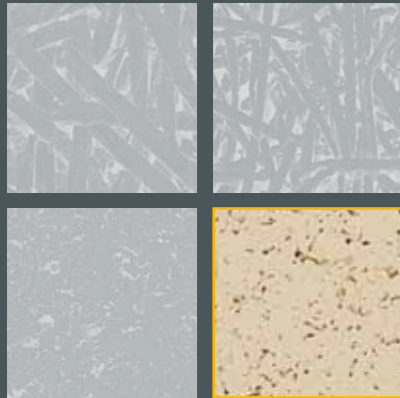


Military training centre, Kriens, Switzerland, Heradesign *fine*





Citizens advice bureau, Weinstadt, Germany,
Heradesign superfine

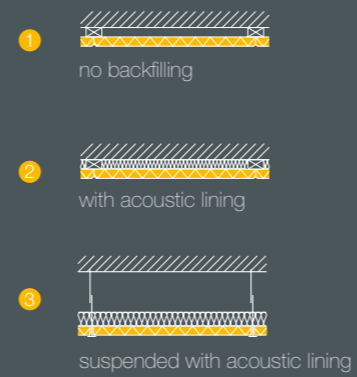
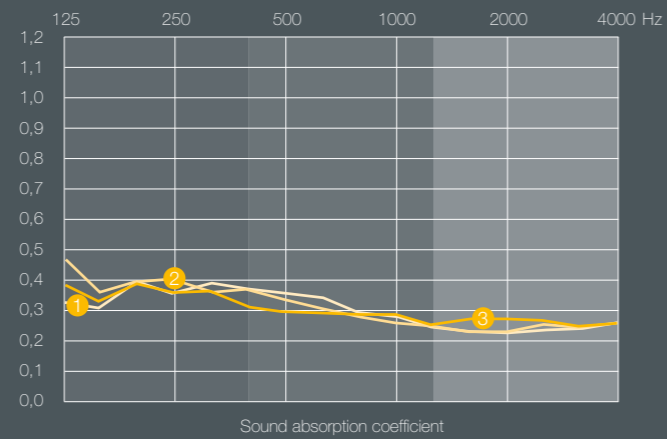


Heradesign® *plano*

1-layer magnesite bonded wood wool acoustic panel with closed surface - building biology recommended.

Nominal size mm	600 x 600 1200 x 600
Thickness mm	25
Weight kg/m ²	15,0

- Almost any colour from international colour schemes (RAL, NTSC, StoColor etc) can be selected
- Sound absorption value α_w up to 0,35
- Reaction to fire according to EN 13501-1: B-s1, d0



wood wool concentration
walls well-being
office ecology **commercial**
design sports & leisure performance
nature premium brand green label
architecture **entertainment**
colours ceilings worldwide room atmosphere
timeless infrastructure education

Restaurant Waku Waku, Hamburg, Germany, Heradesign *superfine*





Restaurant Picasso, Gijón, Spain, Heradesign *superfine*



Shopping & Entertainment centre „GREN“, Orel, Russia, Heradesign *fine*



Endemol Studios, Amsterdam, the Netherlands,
Heradesign *fine*



McDonald's, Klagenfurt, Austria,
Heradesign *superfine*



McDonald's, Paris, France,
Heradesign *superfine*



Art City "De Singel", Antwerp, Belgium,
Heradesign *fine*





Alhóndiga, cultural centre, Bilbao, Spain, Heradesign *fine*





Heradesign.

for good architecture

A business unit of Knauf Insulation GmbH

Heradesign Ceiling Systems
A-9702 Ferndorf 29, Austria
Phone +43 4245 2001-3003
Fax +43 4245 2001-3499
office@heradesign.com

www.heradesign.com