



CATALOGUE



Store Solutions



Direct to Store



Custom Creations

Welcome to SI Retail's v12 catalogue!

Since the release of our last catalogue, we've introduced a range of new products and worked with our factories to reduce costs to ensure that we are still one of the most competitive retail fixture suppliers in the market.

The new products that we've introduced to our range include:



- Metal gondola systems p. 13-21
- Slotwall gondola systems p. 22-23
- Slotwall gondola shelving p. 24
- Wire storage racks p. 35-36
- Hardware hooks p. 40-42
- Handbag stands p. 67
- Brochure holders p. 84-89

Perhaps the most exciting addition to our range is the new X-GLOO event tent. This inflatable tent is the perfect branding tool for tradeshow, promotions and events. Further information is available on page 112 to page 119 and also on our new X-GLOO website. To check it out, visit: www.siretail.com.au/x-gloo.



We've also expanded the service that we offer to include the SI Direct® business model, which sources, manufactures and ships directly from China to your store/s. This business is wholly owned by SI Retail® and is managed by a bilingual team who understand your project's needs.

By working closely with your Business Manager, we can design a customised solution to suit your business. Some of the benefits of using SI Direct include reduced handling points and reduced labour costs. Turn to page 5 to find out more.



To improve our product and service offering, SI Retail is in the process of building a fully bonded warehouse in Shanghai that will be completed in December 2012. This move enables increased stock holdings on site for customer requirements and efficient shipments due to the new location. There will also be a greater ability for product consolidation in China to save costs and achieve quicker installation once the products reach your warehouse or stores.

We look forward to providing you with quality products and affordable customised in-store solutions.



Close to 40 years ago, Ron Fuller had an idea that would change the face of point-of-sale displays forever: End-Sign™. This promotional sign was an instant success and is an icon that is seen on storefronts everywhere across Australia.

Not content to limit himself to just the End-Sign, Ron started SI Retail (formally known as Southern Imperial) to supply shop fittings to Australian and New Zealand retailers.

Today, SI Retail is still a family-run business – now in its second generation – and its product base has expanded to over 2,000 lines.

In 2006 SI Retail established operations in China to provide improved service and product offerings to our customers. We are currently in the process of building a fully bonded warehouse in Shanghai due for completion in December 2012. Its 7,000m² area will cater for inventory management on site so customers can store products in China and save warehousing costs in Australia.

In keeping with our tradition of bringing innovation to the retail sector, SI Retail's most recent enterprise is the SI Direct business model, which provides services in sourcing and manufacturing shop fittings and transporting them directly to your nominated location. This means reduced costs and reduced lead times for large projects.

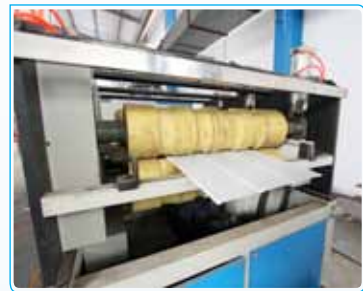
So whether you just need to replace a few items in your store or you need to fit out a chain of stores across the country – SI Retail has you covered.



SI Retail's sub-brands highlight our product and service offerings to give you the best possible outcomes. SI Shop® is our online store (visit www.sishop.com.au) SI Brand® covers branded promotional items, such as flags, banners and the new X-GLOO event tent (see www.siretail.com/sibrand). SI Displays® and SI Fixtures® cover in-store retail solutions.

SI Retail is committed to giving our customers the best opportunities and the most holistic service possible. That's why we've established our own office in China to provide services in sourcing, manufacturing and shipping. This ensures the supply chain is fully controlled – from the start of your project through to its completion.

In China, we have a bilingual team of designers, quality controllers, project coordinators, product buyers and logistical team. The right blend of Australian and Chinese management gives us the unique ability to completely understand your requirements and correctly convey that throughout the manufacturing and shipping processes.



Wholly owned by SI Retail Pty Ltd, this business is registered as a Full Trading Company in China and is licensed to import into and export from China. This means that our network includes factories that supply domestically as well as those that are export-approved.

The main goal of SI Direct is to reduce your costs and achieve the most efficient lead times and quality outcomes for your projects. We've recently opened a new office in Shanghai where we are in the process of building a 7,000m² fully bonded warehouse due to open late 2012. This will enable us to store and manage inventory for our customer's requirements and will result in efficient shipment processes with consolidation capabilities and "just in time" delivery to anywhere in Australia and New Zealand.

Our manufacturing capabilities are extensive, covering all materials used in retail with many of our custom creations combining more than one. This suits the modern retailer looking for shop fittings at the lowest overall cost. Our complete operation includes project management from concept to installation, including full production management and inventory management in China that deliver results.

We adopt a holistic common sense approach knowing the item needs to go through several cost stages before it is used in the store. This includes production, shipping and installation. Our project management pays close attention to the design, packing, transportation and many other areas.

Your SI Retail Business Manager will work with you to design a plan that is right for your needs. Our most popular logistical plans include the "Direct Rollout" option and "Store in a Box".

Direct Rollout

With the Direct Rollout option, we can kit product components together, including printed material, and label it for individual stores. This keeps labour costs at the origin and therefore reduces your costs. It then gets bulk shipped to the destination country and our team unpacks the containers and sends the individual packages to your stores. This option is suitable for any number of stores.



Store in a Box

Retail chains can have full store fixtures manufactured in China, packed in a container at the factory and delivered directly to the store. This reduces domestic delivery and handling costs and provides the shortest lead time from multiple factories direct to stores.

Costs are reduced even further with designer packing to suit the in-store installation. Containers are packed according to the store's layout, with colour coding and labeling for departments. Container mapping is used to aid the unloading and to increase the efficiency in getting these fittings onto the floor, which again will minimise your fit out costs.

Here are some recent retailer examples that have used our SI Direct business model with first-rate results:



Give us a call today to arrange an appointment with one of our SI Direct Business Managers for a free quote.

At SI Retail, we are extremely excited to announce the arrival of the X-GLOO event tent! Perfect for tradeshows, exhibits, events, sponsorships, promotions and festivals, the X-GLOO event tent is the ultimate branding tool. Whether outdoors or indoors, the X-GLOO gets noticed.

X-GLOO is one of three divisions of the German company Skywalk GmbH & Co. KG, which was founded in 2001 by 4 passionate paragliding pilots and kites. Their fascination with wind power and their experience in aerodynamics saw them design the SKYWALK paraglider and the FLYSURFER kiteboard. Years of experience with aerodynamics and robust yet lightweight materials were assimilated to create the X-GLOO products.



In 2008, X-GLOO won the prestigious red dot design award. The red dot design award is one of the largest international design-oriented competitions, and the red dot label is designated by accredited jurors and acts to distinguish the best in the area of product design.

SI Retail only introduced X-GLOO to Australia and New Zealand in late 2011, but since its release in Europe a few years ago it has been employed by some of the world's leading brands:

- | | | | | |
|------------|----------|---------|-----------|----------|
| Nike | Red Bull | Bacardi | Carlsberg | Goodyear |
| Land Rover | Hyundai | Etihad | Puma | Reebok |



With multiple styles and various add-ons, the individual design possibilities of the X-GLOO are endless. What's more, the ability to change your messages as necessary means that the X-GLOO is always current and appropriate.

- **X-PERT** - Design it yourself! Individual colour choice with branding.
- **X-ACT** - Standard design in black, white, red or blue, with silver walls.
- **X-TRAS** - Change the shape or size of your X-GLOO by adding different elements.
- **X-RELAX** - Mobile seats that feature your brand.

The X-GLOO is available in 4x4, 5x5, 6x6 and 8x8 metre configurations. The individual branding is achieved through digital printing, screen printing or sewn application.



Need another reason to choose X-GLOO?

- **Professional.** High quality workmanship for indoor and outdoor use.
- **Aerodynamic.** Stable up to 60km/h (32 knots) wind speed.
- **Customisable.** Individually designable advertising medium.
- **Independent.** Only requires one person to be pumped up and is ready in minutes
- **Flexible.** Variable side elements in various configurations.
- **Modular.** Unlimited expansion with tunnel elements.
- **Silent.** No noise from blowers or fans. No continuous air needed!
- **Design.** Designed according to "form follows function".
- **Distinguished.** Winner of the red dot design award 2008.
- **Mobile.** Easily transportable with a backpack or trolley.

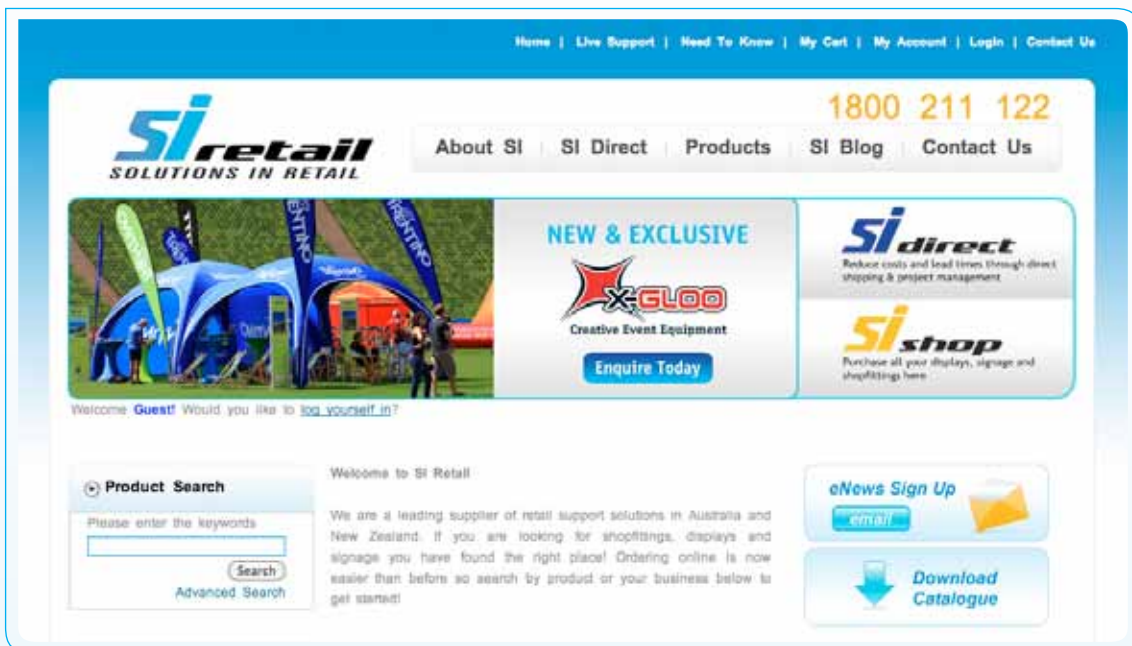
We understand that the X-GLOO impresses best when it is seen in action, so contact us today for a free demonstration. You can also view the set up video on our new X-GLOO website. Just visit www.siretail.com.au/x-gloo.

You can also visit www.siretail.com.au/sibrand for our complementary promotional products.



SI Shop is our online shopping facility: www.sishop.com.au. You can purchase your store fittings direct from our website – shipping nationally, at your convenience. Simply browse our online store, add products to your cart, fill out your delivery details and pay by Visa or Mastercard or on your Account. It's that easy! There is **no minimum online order amount**.

You can order as a guest, but if you register you don't need to complete your details each time. If you've purchased from us before, please phone us for your log in details.



If you have any quick questions during our office hours (8:30 am to 5:00 pm AEST), our friendly staff are available to help you through our **Online Live Chat** function. If we are attending to other customers at the time, you can leave an email message that we will endeavour to respond to within 2 hours. If you contact us outside of office hours, we will attend to your enquiry as soon as possible on the next business day.

Be sure to check out our **monthly featured products** online at great prices!

The **SI Blog** is updated regularly and features important information about our new and existing products, handy hints for your in-store displays and ideas to help you increase your sales.

We also encourage you to 'like' us on **Facebook** and 'follow' us on **Twitter**. We work hard to ensure our social media pages are full of helpful advice, product news, special offers and news and current affairs relevant to the retail sector. You can also follow us on **LinkedIn**.



Address:

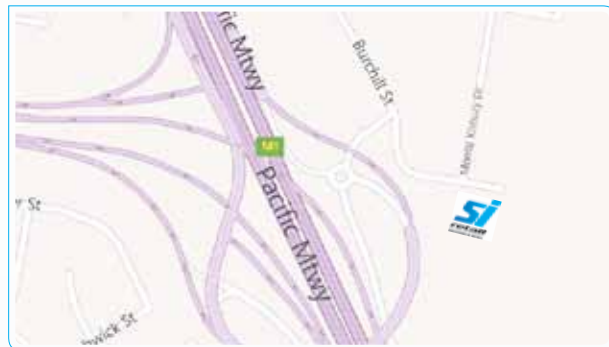
85 Burchill Street
Loganholme QLD 4129

Phone: (07) 3801 0000

Fax: (07) 3801 0022

Email: info@siretail.com.au

Website: www.sishop.com.au



Come and view our products in action! **Our showroom is open from 8:30 am to 4:00 pm Monday to Friday.**

Orders can be placed online, over the phone, by fax, or in person at our showroom. There is a \$50.00 minimum order quantity for all orders placed by phone, fax, email or in our showroom. **There is no minimum order required for online orders.** All goods must be paid for before they will be dispatched. We accept cash, cheque, debit cards and Visa or Mastercard.

You are welcome to collect your order from our warehouse before 4:00 pm, but please remember that most of our stock items are flat packed, so you will require a suitable vehicle to transport them. Because orders can take upwards of 20 minutes to be picked and packed, if you are able to phone or fax your order through with an estimated collection time, we will try to have your order ready by that time. All cash sales need to have an account set up in our system, but this only requires your company name and contact details.

Online orders placed before 10:30 am will be dispatched the same day. While we do try to dispatch orders placed after 10:30 am on the same day, we cannot make any guarantees. If your order is urgent, please let us know and we will do everything we can to assist you.

Approximate delivery times to **metro areas** are as follows:



Regional areas can take an extra few days.

Feel free to contact our office for a more specific ETA on your order.

For large deliveries, please advise if you have your own forklift or whether we need to book a truck equipped with one. Likewise, if access to your premises is restricted or above ground level, prior notification is greatly appreciated.


Solutions in Fixtures and Accessories

Metal Gondolas	-	-	-	-	-	-	-	-	-	-	-	13-21
Slotwall Gondolas	-	-	-	-	-	-	-	-	-	-	-	22-23
Slotwall Shelving & Accessories	-	-	-	-	-	-	-	-	-	-	-	24-25
Wall Strip	-	-	-	-	-	-	-	-	-	-	-	26-27
Wall Strip Crossbar & Hangrail	-	-	-	-	-	-	-	-	-	-	-	27
Wall Strip Shelving	-	-	-	-	-	-	-	-	-	-	-	28-29
Wall Strip Arms	-	-	-	-	-	-	-	-	-	-	-	29-31
Wall Strip Hooks	-	-	-	-	-	-	-	-	-	-	-	31
Glass Cubing Display Systems	-	-	-	-	-	-	-	-	-	-	-	32-33
Security Accessories	-	-	-	-	-	-	-	-	-	-	-	34
Wire Storage Racks	-	-	-	-	-	-	-	-	-	-	-	35-36


Solutions in Displays and Signage

Display Hooks	-	-	-	-	-	-	-	-	-	-	-	37-43
Pegboard Hooks	-	-	-	-	-	-	-	-	-	-	-	37
Metalboard Hooks	-	-	-	-	-	-	-	-	-	-	-	38
Slotwall Hooks	-	-	-	-	-	-	-	-	-	-	-	38-39
Crossbar Hooks	-	-	-	-	-	-	-	-	-	-	-	39
Hardware Hooks	-	-	-	-	-	-	-	-	-	-	-	40-42
Hook Security	-	-	-	-	-	-	-	-	-	-	-	43
Hang Tabs	-	-	-	-	-	-	-	-	-	-	-	44
Data Strip	-	-	-	-	-	-	-	-	-	-	-	45-47
Shelf Talkers	-	-	-	-	-	-	-	-	-	-	-	47-48
Clip Strips	-	-	-	-	-	-	-	-	-	-	-	49-50
Hanging Accessories	-	-	-	-	-	-	-	-	-	-	-	51
Shopping Baskets	-	-	-	-	-	-	-	-	-	-	-	52-53
Basket Trolley & Accessories	-	-	-	-	-	-	-	-	-	-	-	53
Slotwall Accessories	-	-	-	-	-	-	-	-	-	-	-	54-59
Slotwall Arms	-	-	-	-	-	-	-	-	-	-	-	54-55
Slotwall Shoe Shelves	-	-	-	-	-	-	-	-	-	-	-	55-56
Slotwall Shelving, Brackets & Signage	-	-	-	-	-	-	-	-	-	-	-	57-58
Slotwall Hooks	-	-	-	-	-	-	-	-	-	-	-	59
Garment Racks	-	-	-	-	-	-	-	-	-	-	-	60-63
Garment Rack Signage & Accessories	-	-	-	-	-	-	-	-	-	-	-	64-65
Dump Bins	-	-	-	-	-	-	-	-	-	-	-	66


Solutions in Displays and Signage

Display Stands - - - - -	67
Handbag Stands - - - - -	67
Acrylic Risers - - - - -	67
Multi Rack Counter Stand - - - - -	90
Livewire™ Cable Display System - - - - -	68-82
Freestanding Shelving - - - - -	68
Ceiling to Floor Shelving - - - - -	68-70
Ceiling to Floor Signage - - - - -	70-73
Tracking Signage - - - - -	73-76
Freestanding Signage - - - - -	76-79
Components - - - - -	80-82
Sign Holders - - - - -	83-101
Acrylic Sign Holders - - - - -	83
Wall Mounts - - - - -	83-84
Brochure Holders - - - - -	84-89
Menu Displays - - - - -	88
Catalogue Stands & Multi Rack - - - - -	90
Snap Frames - - - - -	91
Bulletin Sign Holders - - - - -	92
Ticket Frames - - - - -	92-94
Easy Clips - - - - -	95-96
Fast Grips - - - - -	97
Hanging Displays - - - - -	98-101
Hanging Accessories - - - - -	99-100
Suction Cups - - - - -	101
Pre-Printed Tickets - - - - -	102-105


Solutions in Brand Promotion and Merchandising

End-Sign™ Point of Sale Flags - - - - -	106-108
Bunting - - - - -	108
FlyBanners™ - - - - -	109
Banner Stands - - - - -	110-111
Signboards - - - - -	111
X-GLOO - - - - -	112-119

NEW

Single Sided Kit 1 Panel



Code	Size	Finish
GD-V-SLV-9-143-1	370 W x 914 L x 1400mm H	Light Grey
GD-V-SLV-9-144-1	470 W x 914 L x 1400mm H	Light Grey
GD-V-SLV-9-145-1	570 W x 914 L x 1400mm H	Light Grey

Introducing the all NEW metal gondola range, ideal for supermarkets, convenience stores and more

All gondolas are a light grey finish

1 panel kit

Single sided kits come with volcano board to suit pegboard accessories - see page 37

Single sided kits are available in:
370, 470 and 570mm W shelves
914 and 1200mm L panels
1400, 1800, 2100 and 2400mm H

These kit codes are based on the 1400mm H

For the full range visit our website - www.sishop.com.au

NEW

Single Sided Kit 2 Panels



Code	Size	Finish
GD-V-SLV-9-143-2	370 W x 1828 L x 1400mm H	Light Grey
GD-V-SLV-9-144-2	470 W x 1828 L x 1400mm H	Light Grey
GD-V-SLV-9-145-2	570 W x 1828 L x 1400mm H	Light Grey

Introducing the all NEW metal gondola range, ideal for supermarkets, convenience stores and more

All gondolas are a light grey finish

2 panel kit

Single sided kits come with volcano board to suit pegboard accessories - see page 37

Single sided kits are available in:
370, 470 and 570mm W shelves
914 and 1200mm L panels
1400, 1800, 2100 and 2400mm H

These kit codes are based on the 1400mm H,

For the full range visit our website - www.sishop.com.au

NEW

Single Sided Kit 3 Panels



Code	Size	Finish
GD-V-SLV-9-143-3	370 W x 2742 L x 1400mm H	Light Grey
GD-V-SLV-9-144-3	470 W x 2742 L x 1400mm H	Light Grey
GD-V-SLV-9-145-3	570 W x 2742 L x 1400mm H	Light Grey

Introducing the all NEW metal gondola range, ideal for supermarkets, convenience stores and more

All gondolas are a light grey finish

3 panel kit

Single sided kits come with volcano board to suit pegboard accessories - see page 37

Single sided kits are available in:
370, 470 and 570mm W shelves
914 and 1200mm L panels
1400, 1800, 2100 and 2400mm H

These kit codes are based on the 1400mm H

For the full range visit our website - www.sishop.com.au

METAL GONDOLAS

NEW

Double Sided Kit 1 Panel



Code	Size	Finish
GD-V-STV-9-143-1	740 W x 914 L x 1400mm H	Light Grey
GD-V-STV-9-144-1	940 W x 914 L x 1400mm H	Light Grey
GD-V-STV-9-145-1	1140 W x 914 L x 1400mm H	Light Grey

Introducing the all NEW metal gondola range, ideal for supermarkets, convenience stores and more

All gondolas are a light grey finish

1 panel kit

Double sided kits come with volcano board to suit pegboard accessories - see page 37

Double sided kits are available in:
370, 470 and 570mm W shelves
914 and 1200mm L panels
1400, 1800, 2100 and 2400mm H

These kit codes are based on the 1400mm H

For the full range visit our website - www.sishop.com.au

NEW

Double Sided Kit 2 Panels



Code	Size	Finish
GD-V-STV-9-143-2	740 W x 1828 L x 1400mm H	Light Grey
GD-V-STV-9-144-2	940 W x 1828 L x 1400mm H	Light Grey
GD-V-STV-9-145-2	1140 W x 1828 L x 1400mm H	Light Grey

Introducing the all NEW metal gondola range, ideal for supermarkets, convenience stores and more

All gondolas are a light grey finish

2 panel kit

Double sided kits come with volcano board to suit pegboard accessories - see page 37

Double sided kits are available in:
370, 470 and 570mm W shelves
914 and 1200mm L panels
1400, 1800, 2100 and 2400mm H

These kit codes are based on the 1400mm H

For the full range visit our website - www.sishop.com.au

NEW

Double Sided Kit 3 Panels



Code	Size	Finish
GD-V-STV-9-143-3	740 W x 2742 L x 1400mm H	Light Grey
GD-V-STV-9-144-3	940 W x 2742 L x 1400mm H	Light Grey
GD-V-STV-9-145-3	1140 W x 2742 L x 1400mm H	Light Grey

Introducing the all NEW metal gondola range, ideal for supermarkets, convenience stores and more

All gondolas are a light grey finish

3 panel kit

Double sided kits come with volcano board to suit pegboard accessories - see page 37

Double sided kits are available in:
370, 470 and 570mm W shelves
914 and 1200mm L panels
1400, 1800, 2100 and 2400mm H

These kit codes are based on the 1400mm H

For the full range visit our website - www.sishop.com.au

NEW

Single Sided Kit 1 Shelf



Introducing the all NEW metal gondola range, ideal for supermarkets, convenience stores and more

All gondolas are a light grey finish

1 shelf kit

Single sided shelf kits come with flat board for a clean finish

Single sided kits are available in:

370, 470 and 570mm W shelves
914 and 1200mm L panels
1400, 1800, 2100 and 2400mm H

These kit codes are based on the 1400mm H,

For the full range visit our website - www.sishop.com.au

Code	Size	Finish
GD-V-SLMS1-9-143-1	370 W x 914 L x 1400mm H	Light Grey
GD-V-SLMS1-9-144-1	470 W x 914 L x 1400mm H	Light Grey
GD-V-SLMS1-9-145-1	570 W x 914 L x 1400mm H	Light Grey

NEW

Single Sided Kit 2 Shelves



Introducing the all NEW metal gondola range, ideal for supermarkets, convenience stores and more

All gondolas are a light grey finish

2 shelf kit

Single sided shelf kits come with flat board for a clean finish

Single sided kits are available in:

370, 470 and 570mm W shelves
914 and 1200mm L panels
1400, 1800, 2100 and 2400mm H

These kit codes are based on the 1400mm H

For the full range visit our website - www.sishop.com.au

Code	Size	Finish
GD-V-SLMS2-9-143-1	370 W x 914 L x 1400mm H	Light Grey
GD-V-SLMS2-9-144-1	470 W x 914 L x 1400mm H	Light Grey
GD-V-SLMS2-9-145-1	570 W x 914 L x 1400mm H	Light Grey

NEW

Single Sided Kit 3 Shelves



Introducing the all NEW metal gondola range, ideal for supermarkets, convenience stores and more

All gondolas are a light grey finish

3 shelf kit

Single sided shelf kits come with flat board for a clean finish

Single sided kits are available in:

370, 470 and 570mm W shelves
914 and 1200mm L panels
1400, 1800, 2100 and 2400mm H

These kit codes are based on the 1800mm H

For the full range visit our website - www.sishop.com.au

Code	Size	Finish
GD-V-SLMS3-9-183-1	370 W x 914 L x 1800mm H	Light Grey
GD-V-SLMS3-9-184-1	470 W x 914 L x 1800mm H	Light Grey
GD-V-SLMS3-9-185-1	570 W x 914 L x 1800mm H	Light Grey

METAL GONDOLAS

NEW

Single Sided Kit 4 Shelves



Code	Size	Finish
GD-V-SLMS4-9-213-1	370 W x 914 L x 2100mm H	Light Grey
GD-V-SLMS4-9-214-1	470 W x 914 L x 2100mm H	Light Grey
GD-V-SLMS4-9-215-1	570 W x 914 L x 2100mm H	Light Grey

Introducing the all NEW metal gondola range, ideal for supermarkets, convenience stores and more

All gondolas are a light grey finish

4 shelf kit

Single sided shelf kits come with flat board for a clean finish

Single sided kits are available in:

370, 470 and 570mm W shelves

914 and 1200mm L panels

1400, 1800, 2100 and 2400mm H

These kit codes are based on the 2100mm H

For the full range visit our website - www.sishop.com.au

NEW

Double Sided Kit



Code	Size	Finish
GD-V-STM-9-143-1	740 W x 914 L x 1400mm H	Light Grey
GD-V-STM-9-144-1	940 W x 914 L x 1400mm H	Light Grey
GD-V-STM-9-145-1	1140 W x 914 L x 1400mm H	Light Grey

Introducing the all NEW metal gondola range, ideal for supermarkets, convenience stores and more

All gondolas are a light grey finish

Kit with no shelves

Double sided shelf kits come with flat board for a clean finish

Double sided kits are available in:

370, 470 and 570mm W shelves

914 and 1200mm L panels

1400, 1800, 2100 and 2400mm H

These kit codes are based on the 1400mm H

For the full range visit our website - www.sishop.com.au

NEW

Double Sided Kit 2 Shelf



Code	Size	Finish
GD-V-STMS2-9-143-1	740 W x 914 L x 1400mm H	Light Grey
GD-V-STMS2-9-144-1	940 W x 914 L x 1400mm H	Light Grey
GD-V-STMS2-9-145-1	1140 W x 914 L x 1400mm H	Light Grey

Introducing the all NEW metal gondola range, ideal for supermarkets, convenience stores and more

All gondolas are a light grey finish

2 shelf kit

Double sided shelf kits come with flat board for a clean finish

Double sided kits are available in:

370, 470 and 570mm W shelves

914 and 1200mm L panels

1400, 1800, 2100 and 2400mm H

These kit codes are based on the 1400mm H

For the full range visit our website - www.sishop.com.au

NEW

Double Sided Kit 4 Shelves



Code	Size	Finish
GD-V-STMS4-9-143-1	740 W x 914 L x 1400mm H	Light Grey
GD-V-STMS4-9-144-1	940 W x 914 L x 1400mm H	Light Grey
GD-V-STMS4-9-145-1	1140 W x 914 L x 1400mm H	Light Grey

Introducing the all NEW metal gondola range, ideal for supermarkets, convenience stores and more

All gondolas are a light grey finish

4 shelf kit

Double sided shelf kits come with flat board for a clean finish

Double sided kits are available in:
370, 470 and 570mm W shelves
914 and 1200mm L panels
1400, 1800, 2100 and 2400mm H

These kit codes are based on the 1400mm H

For the full range visit our website - www.sishop.com.au

NEW

Double Sided Kit 6 Shelves



Code	Size	Finish
GD-V-STMS6-9-183-1	740 W x 914 L x 1400mm H	Light Grey
GD-V-STMS6-9-184-1	940 W x 914 L x 1400mm H	Light Grey
GD-V-STMS6-9-185-1	1140 W x 914 L x 1400mm H	Light Grey

Introducing the all NEW metal gondola range, ideal for supermarkets, convenience stores and more

All gondolas are a light grey finish

6 shelf kit

Double sided shelf kits come with flat board for a clean finish

Double sided kits are available in:
370, 470 and 570mm W shelves
914 and 1200mm L panels
1400, 1800, 2100 and 2400mm H

These kit codes are based on the 1800mm H

For the full range visit our website - www.sishop.com.au

NEW

Double Sided Kit 8 Shelves



Code	Size	Finish
GD-V-STMS8-9-213-1	740 W x 914 L x 1400mm H	Light Grey
GD-V-STMS8-9-214-1	940 W x 914 L x 1400mm H	Light Grey
GD-V-STMS8-9-215-1	1140 W x 914 L x 1400mm H	Light Grey

Introducing the all NEW metal gondola range, ideal for supermarkets, convenience stores and more

All gondolas are a light grey finish

8 shelf kit

Double sided shelf kits come with flat board for a clean finish

Double sided kits are available in:
370, 470 and 570mm W shelves
914 and 1200mm L panels
1400, 1800, 2100 and 2400mm H

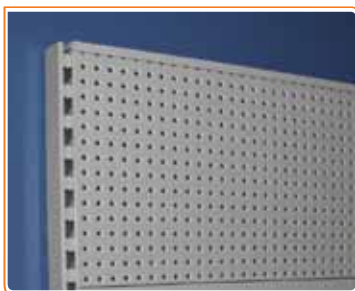
These kit codes are based on the 2100mm H

For the full range visit our website - www.sishop.com.au

GONDOLA COMPONENTS

NEW

Pegboard Panels



All metal gondola components are sold separately so you can create your own display

Pegboard volcano panels are available in 914 and 1200mm L

Available in 100, 200 and 400mm H panels

To suit uprights in 1400, 1800, 2100 and 2400mm H

These codes are for the 914mm range

For the full range, visit our website - www.sishop.com.au

Code	Size	Finish
GD-V-VP-914-100	914 L x 100mm H	Light Grey
GD-V-VP-914-200	914 L x 200mm H	Light Grey
GD-V-VP-914-400	914 L x 400mm H	Light Grey

NEW

Flat Panels



All metal gondola components are sold separately so you can create your own display

Flat metal panels are available in 914 and 1200mm L

Available in 100, 200, 300 and 400mm H panels

To suit uprights in 1400, 1800, 2100 and 2400mm H

These codes are for the 914mm range

For the full range, visit our website - www.sishop.com.au

Code	Size	Finish
GD-V-FM-914-100	914 L x 100mm H	Light Grey
GD-V-FM-914-200	914 L x 200mm H	Light Grey
GD-V-FM-914-300	914 L x 300mm H	Light Grey
GD-V-FM-914-400	914 L x 400mm H	Light Grey

NEW

Slotwall Panels



All metal gondola components are sold separately so you can create your own display

Slotwall panels are available in 914 and 1200mm L

Available in 100mm H panels

To suit uprights in 1400, 1800, 2100 and 2400mm H

These codes are for the 914mm range

For the full range, visit our website - www.sishop.com.au

Code	Size	Finish
GD-V-SW-914-100	914 L x 100mm H	Light Grey
GD-V-SW-1200-100	1200 L x 100mm H	Light Grey

NEW

Wall Strip Uprights



Code	Size	Style & Finish
GD-V-U_1410	1400mm H	Standard or Heavy Duty, Light Grey
GD-V-U_1810	1800mm H	Standard or Heavy Duty, Light Grey
GD-V-U_2110	2100mm H	Standard or Heavy Duty, Light Grey
GD-V-U-H2410	2400mm H	Heavy Duty, Light Grey

* __ insert S or H for standard duty or heavy duty respectively

All metal gondola components are sold separately so you can create your own display

Single slot

Uprights are available in standard and heavy duty

Standard uprights available in 1400, 1800, 2100mm H

Heavy duty uprights available in 1400, 1800, 2100, 2400mm H

50mm pitch

Plastic post caps come with all standard uprights

NEW

Feet



Code	Size	Finish
GD-V-U_160-370	370 W x 160mm H	Light Grey
GD-V-U_160-370	470 W x 160mm H	Light Grey
GD-V-U_160-370	570 W x 160mm H	Light Grey

* __ insert S or H for standard duty or heavy duty respectively

All metal gondola components are sold separately so you can create your own display

Feet are available in standard and heavy duty

Available in 370, 470 and 570mm W

Available in 160mm H

NEW

Base Skirt



Code	Size	Finish
GD-VFLP-914-160	914 L x 160mm H	Light Grey
GD-VFLP-1200-160	1200 L x 160mm H	Light Grey

All metal gondola components are sold separately so you can create your own display

Base gondola skirts are available for 914 and 1200mm panels

Connects directly into the feet to finish your gondola and prevent items rolling under the display

GONDOLA COMPONENTS

NEW

Top Cap



All metal gondola components are sold separately so you can create your own display

Top caps are used to cover panels and uprights on double sided gondolas

Available for 914 and 1200mm panels

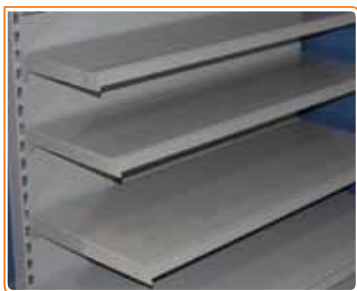
60mm D suit standard duty panels

80mm D suit heavy duty panels

Code	Size	Style & Finish
GD-V-STC-914	30 W x 60 D x 914mm L	Light Grey
GD-V-STC-1200	30 W x 60 D x 1200mm L	Light Grey
GD-V-HTC-914	30 W x 80 D x 914mm L	Light Grey
GD-V-HTC-1200	30 W x 80 D x 1200mm L	Light Grey

NEW

Shelves



All metal gondola components are sold separately so you can create your own display

Shelves are available for 914 and 1200mm L panels

Available in 250, 300, 370, 470 and 570mm W

For the full range, visit our website - www.sishop.com.au

Brackets sold separately - see below

Code	Size	Style & Finish
GD-V-SF-__-250	250 W	914 or 1200mm L, Light Grey
GD-V-SF-__-300	300 W	914 or 1200mm L, Light Grey
GD-V-SF-__-370	370 W	914 or 1200mm L, Light Grey
GD-V-SF-__-470	470 W	914 or 1200mm L, Light Grey
GD-V-SF-__-570	570 W	914 or 1200mm L, Light Grey

* __ insert 914 or 1200 for 914 and 1200mm L respectively

NEW

Brackets



All metal gondola components are sold separately so you can create your own display

Shelf brackets are available in 230, 300, 370, 470 and 570mm L

Code	Size	Finish
GD-V-BS-250	250mm L	Light Grey
GD-V-BS-300	300mm L	Light Grey
GD-V-BS-370	370mm L	Light Grey
GD-V-BS-470	470mm L	Light Grey
GD-V-BS-570	570mm L	Light Grey

NEW

Wire Fence



All metal gondola components are sold separately so you can create your own display

The wire fence keeps your stock on your shelves

Available for 914 and 1200mm L shelves

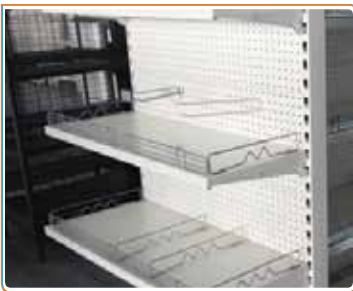
Available in 95 and 170mm H

Use dividers with fencing to separate stock - see below

Code	Size	Finish
GD-V-FNC914-95	914 L x 95mm H	Chrome
GD-V-FNC914-170	914 L x 170mm H	Chrome
GD-V-FNC1200-95	1200 L x 95mm H	Chrome
GD-V-FNC1200-170	1200 L x 170mm H	Chrome

NEW

Wire Dividers



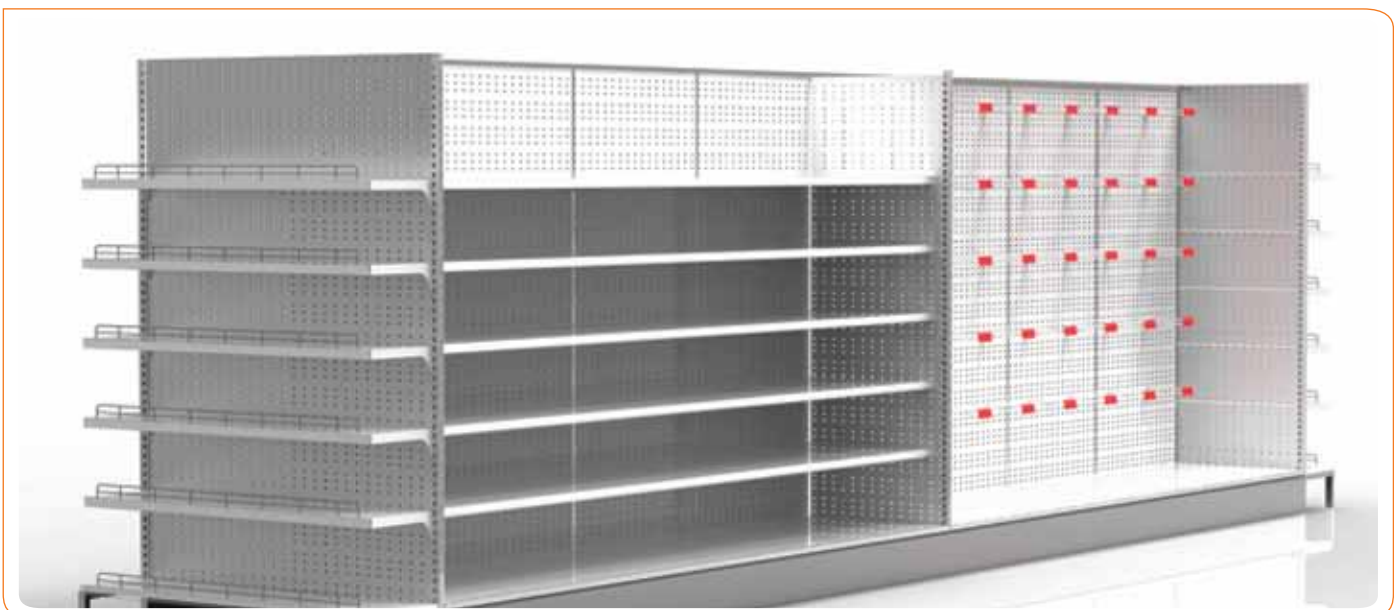
All metal gondola components are sold separately so you can create your own display

Dividers keep your stock in order on your shelves

Available for 370, 470 and 570mm W shelves

Available in 95 and 170mm H

Code	Size	Finish
GD-V-DIV-370-95	370 W x 95mm H	Chrome
GD-V-DIV-370-170	370 W x 170mm H	Chrome
GD-V-DIV-470-95	470 W x 95mm H	Chrome
GD-V-DIV-470-170	470 W x 170mm H	Chrome
GD-V-DIV-570-95	570 W x 95mm H	Chrome
GD-V-DIV-570-170	570 W x 170mm H	Chrome



SLOTWALL GONDOLAS

NEW

Fixed Tower



NEW freestanding slotwall gondolas

The fixed tower is perfect for small in-store spaces

On castors for easy in-store manoeuvring

4 sided display with 410 L x 410 W x 1200mm H (usable area)

Why not add an acrylic sign holder to the top of your display for added impact - see page 83

Ideal for finding the best selling positions in-store

Standard grooves are 6mm D and 10mm H and are designed to accept pegboard hooks (page 37) as well as slotwall hooks (pages 38-39)

Code	Size	Finish
DC-SW-TOWERF-604WT-T	604 L x 604 W x 1360mm H	White
DC-SW-TOWERF-604MP-T	604 L x 604 W x 1360mm H	Maple

NEW

Spinner Tower



NEW freestanding slotwall gondolas

The spinner tower is perfect for small in-store spaces

Why not add an acrylic sign holder to the top of your display for added impact - see page 83

Ideal for finding the best selling positions in-store

Standard grooves are 6mm D and 10mm H and are designed to accept pegboard hooks (page 37) as well as slotwall hooks (pages 38-39)

Base has protective rubbers to prevent scratching when moved

Code	Size	Finish
DC-SW-TOWERS-460WT-T	460 L x 460 W x 1360mm H	White
DC-SW-TOWERS-460MP-T	460 L x 460 W x 1360mm H	Maple

NEW

H Rack



NEW freestanding slotwall gondolas

The H rack is ideal for larger items and shelving in-store

On castors for easy in-store manoeuvring

Ideal for finding the best selling positions in-store

Add the HangShelf™ and exclusive shelving solutions - see pages 25 and 26

Standard grooves are 6mm D and 10mm H and are designed to accept pegboard hooks (page 37) as well as slotwall hooks (pages 38-39)

Code	Size	Finish
DC-SW-H-1200WT-T	1220 L x 600 W x 1350mm H	White
DC-SW-H-1200MP-T	1220 L x 600 W x 1350mm H	Maple

NEW

Trapezium



NEW freestanding slotwall gondolas

The trapezium is perfect for shelving products

On castors for easy in-store manoeuvring

Includes 3 matching melamine shelves and 3 toughened glass shelves

1 side flat melamine back, 3 sides with slotwall

Standard grooves are 6mm D and 10mm H and are designed to accept pegboard hooks (page 37) as well as slotwall hooks (pages 38-39)

Code	Size	Finish
DC-SW-TRAP-1050MP-T	1050 L x 650 W x 1400mm H	Maple
DC-SW-TRAP-1050WT-T	1050 L x 650 W x 1400mm H	White

NEW

4 Way Star Large



NEW freestanding slotwall gondolas

The large 4 way star is perfect for shelving and product merchandising on hooks and other accessories

On castors for easy in-store manoeuvring

Why not add an acrylic sign holder to the top of your display for added impact - see page 83

Ideal for finding the best selling positions in-store

Standard grooves are 6mm D and 10mm H and are designed to accept pegboard hooks (page 37) as well as slotwall hooks (pages 38-39)

Code	Size	Finish
DC-SW-STAR-910MP-T	910 L x 910 W x 1320mm H	Maple
DC-SW-STAR-910WT-T	910 L x 910 W x 1320mm H	White

NEW

4 Way Star Small



NEW freestanding slotwall gondolas

The small 4 way star is perfect for product merchandising and smaller in-store spaces

On castors for easy in-store manoeuvring

Why not add an acrylic sign holder to the top of your display for added impact - see page 83

Ideal for finding the best selling positions in-store

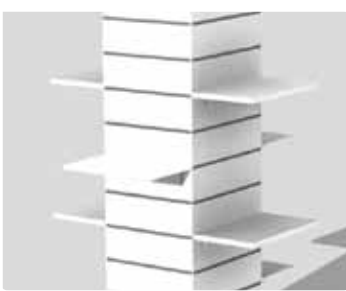
Standard grooves are 6mm D and 10mm H and are designed to accept pegboard hooks (page 37) as well as slotwall hooks (pages 38-39)

Code	Size	Finish
DC-SW-STAR-604WT-T	604 L x 604 W x 1350mm H	White
DC-SW-STAR-604MP-T	604 L x 604 W x 1350mm H	Maple

SLOTWALL SHELVING

NEW

Fixed Tower Melamine Shelves



NEW product shelving specific to the fixed tower slotwall gondola

Available in white or maple

This shelf can also be used on the end of the H rack and at the top side of the trapezium slotwall gondolas

Brackets and grommets sold separately - see page 58

Also add acrylic sign holders to your shelves to promote your items - see page 83

Code	Size	Finish
DC-SW-MEL-380-WT	380 L x 220 W x 18mm Thick	White
DC-SW-MEL-380-MP	380 L x 220 W x 18mm Thick	Maple

NEW

H Rack Melamine Shelves



NEW product shelving specific to the H rack slotwall gondola

Available in white or maple

Brackets and grommets sold separately - see page 58

Also add acrylic sign holders to your shelves to promote your items - see page 83

Code	Size	Finish
DC-SW-MEL-1180-WT	1180 L x 255 W x 18mm Thick	White
DC-SW-MEL-1180-MP	1180 L x 255 W x 18mm Thick	Maple

NEW

Large 4 Way Star Melamine Shelves



NEW product shelving specific to the large 4 way star slotwall gondola

Available in white or maple

Can also be used on the bottom side of the trapezium slotwall gondola

Brackets and grommets sold separately - see page 58

Also add acrylic sign holders to your shelves to promote your items - see page 83

Code	Size	Finish
DC-SW-MEL-580-WT	580 L x 255 W x 18mm Thick	White
DC-SW-MEL-580-MP	580 L x 255 W x 18mm Thick	Maple

HangShelf™ for Slotwall



The HangShelf™ is unique to SI Retail

Created to satisfy the need for both hanging garments and shelving products on the one fitting

Perfect for fashion retailers maximising their space

Available with glass, black, white or woodgrain melamine shelves

Available in 600, 900 and 1200mm lengths

Now also designed to specifically suit the H rack freestanding gondolas in white and maple - see page 22

Code	Size	Style
SW-HR12-600__-T	300 W x 600mm L	For Slotwall
SW-HR12-900__-T	300 W x 900mm L	For Slotwall
SW-HR12-1200__-T	300 W x 1200mm L	For Slotwall
DC-HR12-600__-T	300 W x 600mm L	For H Rack Freestanding Gondolas
DC-HR12-900__-T	300 W x 900mm L	For H Rack Freestanding Gondolas

* __ insert SG for glass, WT for white, BK for black, RC for maple

Glass Shelving



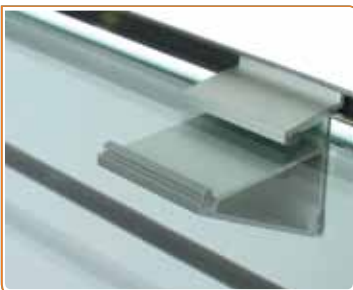
Toughened glass shelves are ideal for retailers looking for clean, professional displays that highlight merchandise

The SI Retail glass range suits:
 Freestanding slotwall gondolas (pages 22-23)
 Wall strip (page 26)
 Livewire™ cable display systems (page 68)
 Glass cubing displays (pages 32-33)

Available in many sizes to suit your needs

Code	Size	Finish & Style
TF-G600T300CL8	300 W x 600 L x 8mm Thick	Clear
TF-G900T300CL8	300 W x 900 L x 8mm Thick	Clear
SF-HR12G-380-CL	255 W x 380 L x 8mm Thick	For Fixed Tower Gondolas
SF-HR12G-880-CL	255 W x 880 L x 8mm Thick	For 910mm Star Gondola
SF-HR12G-1180-CL	255 W x 1180 L x 8mm Thick	For H Rack Gondola Length

Slotwall Shelf Clip



The shelf bracket is a great new slotwall accessory that caters to our glass shelving range

Add to your freestanding gondolas (pages 22-23) or slotwall panels in-store

One fitting suits 6, 8 and 10mm thick shelves

Rubber stoppers on the shelf clip adjust to hold the varying thicknesses and prevent glass from being scratched

Code	Size	Finish
SW-BC-50	50 W x 70mm D	Satin Chrome

WALL STRIP

Wall Strip Single



A stylish wall fitting that doesn't impact on your pre-existing store structure

Can be used on any wall

These thin chrome strips attach to your wall with crossbars and fittings to display garments and merchandise

Available in 1200 to 2400mm L

40mm pitch

Code	Size	Finish
WS-S-1200	20 W x 1200mm L	Chrome
WS-S-1500	20 W x 1500mm L	Chrome
WS-S-1800	20 W x 1800mm L	Chrome
WS-S-2100	20 W x 2100mm L	Chrome
WS-S-2400	20 W x 2400mm L	Chrome

Wall Strip Double



A stylish wall fitting that doesn't impact on your pre-existing store structure

Can be used on any wall

These thin chrome strips attach to your wall with crossbars and fittings to display garments and merchandise

Available in 1800 to 2400mm L

Use double slot wall strip to continue your wall strip across a larger wall

40mm pitch

Code	Size	Finish
WS-D-1800	35 W x 1800mm L	Chrome
WS-D-2100	35 W x 2100mm L	Chrome
WS-D-2400	35 W x 2400mm L	Chrome

Wall Strip Single White



A stylish wall fitting that doesn't impact on your pre-existing store structure

Can be used on any wall

These thin white powdercoated strips attach to your wall with crossbars and fittings to display garments and merchandise

Available in 1200 to 2400mm L

40mm pitch

Code	Size	Finish
WS-S-1200-WT	20 W x 1200mm L	White
WS-S-1500-WT	20 W x 1500mm L	White
WS-S-1800-WT	20 W x 1800mm L	White
WS-S-2100-WT	20 W x 2100mm L	White
WS-S-2400-WT	20 W x 2400mm L	White

Wall Strip Double White



A stylish wall fitting that doesn't impact on your pre-existing store structure

Can be used on any wall

These thin white powdercoated strips attach to your wall with crossbars and fittings to display garments and merchandise

Available in 1800 to 2400mm L

Use double slot wall strip to continue your wall strip across a larger wall

40mm pitch

Code	Size	Finish
WS-D-1800-WT	35 W x 1800mm L	White
WS-D-2100-WT	35 W x 2100mm L	White
WS-D-2400-WT	35 W x 2400mm L	White

Wall Strip Crossbar



The crossbar allows arms (pages 30-31) and hooks (page 31) to be added to the wall strip system for product merchandising

Add the crossbar to each side of your installed wall strip and add accessories as needed

Available in 600, 900 and 1200mm L

12mm thick

Code	Size	Finish
WS-R12-600	600mm L	Chrome
WS-R12-900	900mm L	Chrome
WS-R12-1200	1200mm L	Chrome

Wall Strip Hangrail



The wall strip hangrail is a standard fitting designed to economically hang your garments

Hooks and arms can also be added to the hangrail

Also use the HangShelf™ to shelve and hang at the same time - see page 28

Available in 600, 900 and 1200mm L

12mm thick

Code	Size	Finish
WS-HR12-600	300 W x 600mm L	Chrome
WS-HR12-900	300 W x 900mm L	Chrome
WS-HR12-1200	300 W x 1200mm L	Chrome

Wall Strip HangShelf™



The HangShelf™ is unique to SI Retail

Created to satisfy the need for both hanging garments and shelving products on the one fitting

Perfect for fashion retailers maximising their space

Available with glass, black, white or woodgrain melamine shelves

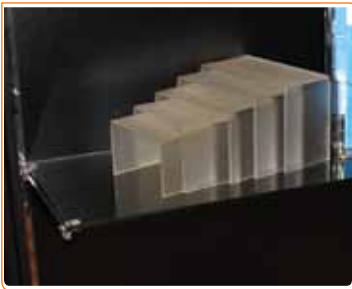
Available in 600, 900 and 1200mm lengths

Also available for freestanding slotwall gondolas (pages 22-23) and wall panels

Code	Size	Style
WS-HR12-600__-T	300 W x 600mm L	For Wall Strip
WS-HR12-900__-T	300 W x 900mm L	For Wall Strip
WS-HR12-1200__-T	300 W x 1200mm L	For Wall Strip

* __ insert SG for glass, WT for white, BK for black, RC for woodgrain

Glass Shelving



Toughened glass shelves are ideal for retailers looking for clean, professional displays that highlight merchandise

The SI Retail glass range suits:
 Freestanding slotwall gondolas (pages 22-23)
 Wall strip (page 26)
 Livewire™ cable display systems (page 68)
 Glass cubing displays (pages 32-33)

Available in many sizes to suit your needs

Code	Size	Finish
TF-G600T300CL8	300 W x 600 L x 8mm Thick	Clear
TF-G900T300CL8	300 W x 900 L x 8mm Thick	Clear

Wall Strip Straight Bracket



A tried and true method for all product shelving

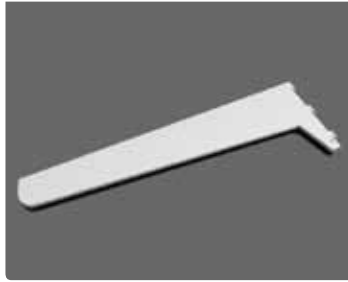
Designed specifically for wall strip

Available in 150 to 400mm L

Use 2 brackets for each shelf length and connect multiple shelves for a larger area with shelf bracket grommets - see page 29

Code	Size	Finish
WS-BS-150	150mm L	Chrome
WS-BS-200	200mm L	Chrome
WS-BS-250	250mm L	Chrome
WS-BS-300	300mm L	Chrome
WS-BS-350	350mm L	Chrome
WS-BS-400	400mm L	Chrome

Wall Strip Straight Bracket White



To accompany your white wall strip, the white straight bracket easily attaches and is perfect for melamine or glass shelves

Available in 150 to 400mm L

Use 2 brackets for each shelf length and connect multiple shelves for a larger area with shelf bracket grommets - see below

Code	Size	Finish
WS-BS-150-WT	150mm L	White
WS-BS-200-WT	200mm L	White
WS-BS-250-WT	250mm L	White
WS-BS-300-WT	300mm L	White
WS-BS-350-WT	350mm L	White
WS-BS-400-WT	400mm L	White

Shelf Bracket Grommets



Shelf grommets attach to slotwall and wall strip brackets and are designed to prevent shelf scratches and provide extra stability to the shelf itself

Choose an end or centre grommet to suit your needs

End grommets support just a single shelf on 1 bracket

Centre grommets are used to hold 2 shelves on 1 bracket, saving costs and creating a streamlined look

Code	Size	Finish
WSA-END-GR	Double Sided	Clear with Rubber Plugs
WSA-CEN-GR	Single Sided	Clear with Rubber Plugs

Wall Strip Z Bar Left



Designed to enhance your wall strip displays, the Z bar hangrail hangs your garments front on and side on

Use additional wall strip arms on the flat Z bar panel such as the straight, lingerie, crank or waterfall arms to display front facing garments - see pages 30 and 31

Available in 1200mm L

12mm thick

Choose left or right Z bar configurations

Code	Size	Finish
WS-HRZL12-1200	300 W x 1200mm L	Chrome

WALL STRIP ACCESSORIES

Wall Strip Z Bar Right



Designed to enhance your wall strip displays, the Z bar Hangrail hangs your garments front on and side on

Use additional wall strip arms on the flat Z bar panel such as the straight, lingerie, crank or waterfall arms to display front facing garments - see below and page 31

Available in 1200mm L

12mm thick

Choose left or right Z bar configurations

Code	Size	Finish
WS-HRZR12-1200	300 W x 1200m L	Chrome

Wall Strip Straight Arm Square



A simple solution for displaying garments on wall strip

Square style tube with tab

Simply hang over the crossbar on your wall strip to create an eye catching front facing product display

Available in 300 and 400mm L

Suits 12mm crossbar

Also available for slotwall - see page 54

Code	Size	Finish
WS-R12R300	300mm L	Chrome
WS-R12R400	400mm L	Chrome

Wall Strip Straight Arm Round



A simple solution for displaying garments on wall strip

Round style tube with round end

Simply hang over the crossbar on your wall strip to create an eye catching front facing product display

Available in 300mm L

Suits 12mm crossbar

Also available for slotwall - see page 54

Code	Size	Finish
WS-R12L300	15.9 Diameter, 300mm L	Chrome

Wall Strip Crank Arm



Hang garments front on from 2 levels with the wall strip crank arm

Suits 12mm crossbar

370mm L

Attaches to the wall strip crossbar - see page 27

Code	Size	Finish
WS-R12C370	12.9 Thick, 200 Drop, 370mm L	Chrome

Wall Strip Waterfall Arm



Utilise merchandise layering with the waterfall arm for wall strip

Available in 6 and 9 pin styles

Suits 12mm crossbar

Attaches to the wall strip crossbar - see page 27

Code	Size	Finish
WS-R12WFS6P	18 W x 400mm L	Chrome
WS-R12WFS9P	18 W x 500mm L	Chrome

Wall Strip Crossbar Hook



Single prong pegboard hooks that attach to the wall strip crossbar - see page 27

Available in 3 sizes

An economical hook that gets the job done in-store

Suits 12mm crossbar

Also suits hang tabs for damaged product packaging - see page 44

Code	Size	Finish
DH-R12S-M100	4.7 x 100mm L	Chrome
DH-R12S-M150	4.7 x 150mm L	Chrome
DH-R12S-M200	4.7 x 200mm L	Chrome

GLASS CUBING DISPLAYS

Single Block Kits



Glass cubing displays are an effective way of displaying your products in-store

Cubing is stylish and modern - it allows your products to be seen from all angles and is a great way to store multiple items

Create a configuration to suit your needs or start off with the basic kits available

Single block kits with glass and cubing connectors

Code	Size	Style
CI-AC11-T	400 W x 400mm H	1 Cube Kit
CI-AC21-T	400 W x 800mm H	2 Cube Kit
CI-AC31-T	400 W x 1200mm H	3 Cube Kit

Double Block Kits



Glass cubing displays are an effective way of displaying your products in-store

Cubing is stylish and modern - it allows your products to be seen from all angles and is a great way to store multiple items

Create a configuration to suit your needs or start off with the basic kits available

Double block kits with glass and cubing connectors

Code	Size	Finish
CI-AC21-T	800 W x 400mm H	2 Cube Kit
CI-AC22-T	800 W x 800mm H	4 Cube Kit
CI-AC32-T	800 W x 1200mm H	6 Cube Kit

Triple Block Kits



Glass cubing displays are an effective way of displaying your products in-store

Cubing is stylish and modern - it allows your products to be seen from all angles and is a great way to store multiple items

Create a configuration to suit your needs or start off with the basic kits available

Triple block kits with glass and cubing connectors

Code	Size	Finish
CI-AC31-T	1200 W x 400mm H	3 Cube Kit
CI-AC32-T	1200 W x 800mm H	6 Cube Kit
CI-AC33-T	1200 W x 1200mm H	9 Cube Kit

Pyramid Kits



Glass cubing displays are an effective way of displaying your products in-store

Cubing is stylish and modern - it allows your products to be seen from all angles and is a great way to store multiple items

Create a configuration to suit your needs or start off with the basic kits available

Pyramid block kits with glass and cubing connectors are ideal for empty corner spaces and to add depth to your store

Code	Size	Finish
CI-AC1P-T	800 W x 800mm H	3 Cube Kit
CI-AC2P-T	800 W x 1200mm H	5 Cube Kit
CI-AC3P-T	1200 W x 1200mm H	6 Cube Kit

Alloy Connectors



Stylish alloy connectors give glass cubing displays a professional appearance

Connectors tighten onto glass sheets to hold configuration in place

Holds up to 6mm glass

Fencing is also an optional extra that can be added to the front of the cubing display to keep stock in place - give us a call for a quote

Code	Style	Finish
SF-GCUBE-AC2	2 Way Connector	Satin Chrome
SF-GCUBE-AC3	3 Way Connector	Satin Chrome
SF-GCUBE-AC4	4 Way Connector	Satin Chrome
CI-G400T400CL5	400 W x 400 L Glass Shelf	Clear

Cubing Accessories



Bases and tops are also available for glass cubing configurations

Bases can be plain or lockable and tops can also be plain or with lights for an illuminated display

Short lead times apply on all bases and tops

Code	Style	Finish
CI-B__-BK	Base in 450, 900 or 1300mm L	Black
CI-T__-BK	Top with light in 450, 900 or 1300mm L	Black
CI-BL__-BK	Lockable base in 450, 900 or 1300mm L	Black

* __ insert 450, 900 or 1300 for these respective lengths in each code

SECURITY ACCESSORIES

Security Mirror



Keep track of what happens in your store with security mirrors

Use in areas that are generally out of sight

Wide angle visibility

20% brighter than glass mirrors

High impact acrylic

Lightweight with mounting unit included

Available in 2 sizes

Code	Size	Finish
SA-MR457	450mm Diameter	Acrylic
SA-MR600	600mm Diameter	Acrylic

Pull Box



Secure valuable items in-store with pull boxes

Available in 2 styles - square and teardrop

Mount black box to desired surface and attach product to silver plate

Perfect for mobile phones and electronic devices

Square pull box cable extends to 900mm L

Teardrop pull box cable extends to 1200mm with a loose cable length of 150mm L

Code	Size	Finish
SA-PB-SQPL1	43 W x 43 L x 15mm H	Black
SA-PB-TDPL2	32 W x 50 L x 15mm H	Black

Stop Lock



Magnetic security clip for display hooks

The stop lock is available in red or black

The stop lock clips over your hook and secures your product in place behind it

To remove the stop locks, a magnetic key is required (sold separately)

Suits hooks up to 6mm thick

Ideal for pegboard and slotwall flip scan display hooks - see pages 37 and 39

Code	Size	Finish
DHA-STOP-LOK-RD	19 W x 38mm L	Red
DHA-STOP-LOK-BK	19 W x 38mm L	Black
DHA-MAGKEY	20 Diameter, 45mm L	Silver

WIRE STORAGE RACK & ACCESSORIES

NEW

Wire Storage Rack Small



A simple storage solution that allows you to clear valuable floor space and manage your goods or excess stock

Perfect for retail, warehouses, cold rooms and your own home

Available in 2 lengths and widths

1800mm H

Holds up to 125kgs evenly distributed per shelf

Kit includes 4 shelves - shelf height can be adjusted to suit your stock

Chrome

Code	Size	Finish
SR-WSC-900X450	900 L x 450 D x 1800mm H	Chrome
SR-WSC-900X600	900 L x 600 D x 1800mm H	Chrome

NEW

Wire Storage Rack Large



A simple storage solution that allows you to clear valuable floor space and manage your goods or excess stock

Perfect for retail, warehouses, cold rooms and your own home

Available in 2 lengths and widths

1800mm H

Holds up to 125kgs evenly distributed per shelf

Kit includes 4 shelves - shelf height can be adjusted to suit your stock

Chrome

Code	Size	Finish
SR-WSC-1200X450	1200 L x 450 D x 1800mm H	Chrome
SR-WSC-1200X600	1200 L x 600 D x 1800mm H	Chrome

NEW

Wire Storage Rack Castors



A fantastic optional extra for the wire storage rack range

Castors convert your rack so it is easily transportable

Heavy duty

Available in lockable and free wheeling

Code	Size	Finish
SR-CASTORS	Free Wheel for Wire Racks	Grey Wheel, Zinc Top
SR-CASTOR-L	Lockable Wheel for Wire Racks	Grey Wheel, Zinc Top

WIRE STORAGE RACK ACCESSORIES

NEW

Wire Storage Rack Dividers



Ideal for excess stock and sorting purposes

Wire storage rack dividers come in 450 and 600mm L to suit the shelving range

Simply clip onto the shelf where required

Strong hold

200mm H

Code	Size	Finish
SR-DIVD-450	450 L x 200mm H	Chrome
SR-DIVD-600	600 L x 200mm H	Chrome

NEW

Wire Storage Rack Fencing



Stop your stock from moving on your wire rack unit with front and side fencing options

Ideal for keeping bulky stock in place

Available in 900 and 1200mm L

Available in 450 and 600mm D

Simply slide over the shelf and it locks in place

Code	Size	Style & Finish
SR-FENCE-450	450 L x 100mm H	Side Fence, Chrome
SR-FENCE-600	600 L x 100mm H	Side Fence, Chrome
SR-FENCE-900	900 L x 100mm H	Front Fence, Chrome
SR-FENCE-1200	1200 L x 100mm H	Front Fence, Chrome

NEW

Wire Storage Rack Handles



Add a handle to your wire storage rack for full displays that are difficult to manoeuvre

Suits full wire storage rack range

Available in 450 and 600mm L

Slips over the wire rack posts to the desired level

Chrome

Code	Size	Finish
SR-HND-450	450mm L	Chrome
SR-HND-600	600mm L	Chrome

Single Prong Hook Pegboard



Single prong pegboard hooks suit pegboard panels as well as slotwall panels

Available in light and heavy duty

An economical hook that gets the job done in-store

Also suits hang tabs for damaged product packaging - see page 44

Code	Size	Finish
DH-PS-S50	3.8 x 50mm L	Chrome
DH-PS-S75	3.8 x 75mm L	Chrome
DH-PS-S100	3.8 x 100mm L	Chrome
DH-PS-S150	3.8 x 150mm L	Chrome
DH-PS-S225	3.8 x 225mm L	Chrome
DH-PS-H150	5.3 x 150mm L	Chrome
DH-PS-H225	5.3 x 225mm L	Chrome
DH-PS-H300	5.3 x 300mm L	Chrome

Flip Scan Hook Pegboard



Flip scan display hooks suit pegboard panels as well as slotwall panels

Available in medium and heavy duty

An economical hook that displays pricing as well as the product

The flip scan label holder is detachable and flips out of the way for easy product viewing

Also suits hang tabs for damaged product packaging - see page 44

Code	Size	Finish
DH-PF-M75__T	4.7 x 75mm L	Chrome with Label Holder Colour of Choice
DH-PF-M100__T	4.7 x 100mm L	Chrome with Label Holder Colour of Choice
DH-PF-M150__T	4.7 x 150mm L	Chrome with Label Holder Colour of Choice
DH-PF-M225__T	4.7 x 225mm L	Chrome with Label Holder Colour of Choice
DH-PF-H150__T	5.3 x 150mm L	Chrome with Label Holder Colour of Choice
DH-PF-H225__T	5.3 x 225mm L	Chrome with Label Holder Colour of Choice
DH-PF-H300__T	5.3 x 300mm L	Chrome with Label Holder Colour of Choice

* __ insert CL, RD or BK for clear, red and black flip scan label holders respectively

Loop Hook Pegboard



Loop display hooks suit pegboard panels as well as slotwall panels

With double prongs to hold larger products

Available in light duty

An economical hook that gets the job done in-store

Also suits hang tabs for damaged product packaging - see page 44

Code	Size	Finish
DH-PL-S75	3.8 x 75mm L	Chrome
DH-PL-S100	3.8 x 100mm L	Chrome
DH-PL-S150	3.8 x 150mm L	Chrome
DH-PL-S225	3.8 x 225mm L	Chrome

DISPLAY HOOKS

Single Prong Hook Metalboard



Single prong pegboard hooks suit flat metalboard displays

Available in medium duty

An economical hook that gets the job done in-store

Also suits hang tabs for damaged product packaging - see page 44

Code	Size	Finish
DH-MSD-M100	4.7 x 100mm L	Chrome
DH-MSD-M150	4.7 x 150mm L	Chrome
DH-MSD-M225	4.7 x 225mm L	Chrome

Flip Scan Hook Metalboard



Metalboard flip scan display hooks suit flat metalboard displays

Available in medium duty

An economical hook that displays pricing as well as the product

The flip scan label holder is detachable and flips out of the way for easy product viewing

Also suits hang tabs for damaged product packaging - see page 44

Code	Size	Finish
DH-MF-M100__T	4.7 x 100mm L	Chrome with Label Holder Colour of Choice
DH-MF-M150__T	4.7 x 150mm L	Chrome with Label Holder Colour of Choice
DH-MF-M225__T	4.7 x 225mm L	Chrome with Label Holder Colour of Choice

* __ insert CL, RD or BK for clear, red and black flip scan label holders respectively

Single Prong Hook Slotwall



Single prong pegboard hooks suit slotwall panels

Available in heavy duty

An economical hook that gets the job done in-store

Also suits hang tabs for damaged product packaging - see page 44

Code	Size	Finish
DH-SS-H50	5.3 x 50mm L	Chrome
DH-SS-H100	5.3 x 100mm L	Chrome
DH-SS-H150	5.3 x 150mm L	Chrome
DH-SS-H200	5.3 x 200mm L	Chrome
DH-SS-H250	5.3 x 250mm L	Chrome
DH-SS-H300	5.3 x 300mm L	Chrome

Flip Scan Hook Slotwall



Slotwall flip scan display hooks suit slotwall panels

Available in heavy duty

An economical hook that displays pricing as well as the product

The flip scan label holder is detachable and flips out of the way for easy product viewing

Also suits hang tabs for damaged product packaging - see page 44

Code	Size	Finish
DH-SF-H100__-T	5.3 x 100mm L	Chrome with Label Holder Colour of Choice
DH-SF-H150__-T	5.3 x 150mm L	Chrome with Label Holder Colour of Choice
DH-SF-H200__-T	5.3 x 200mm L	Chrome with Label Holder Colour of Choice

* __ insert CL, RD or BK for clear, red and black flip scan label holders respectively

Loop Hook Slotwall



Slotwall loop display hooks suit slotwall panels

With double prongs to hold larger products

Available in heavy duty

An economical hook that gets the job done in-store

Also suits hang tabs for damaged product packaging - see page 44

Code	Size	Finish
DH-SL-H100	5.5 x 100mm L	Chrome
DH-SL-H150	5.5 x 150mm L	Chrome
DH-SL-H200	5.5 x 200mm L	Chrome

Single Prong Hook Crossbar



Single prong pegboard hooks that attach to the wall strip crossbar - see page 27

Available in 3 sizes

An economical hook that gets the job done in-store

Also suits hang tabs for damaged product packaging - see page 44

Code	Size	Finish
DH-R12S-M100	4.7 x 100mm L	Chrome
DH-R12S-M150	4.7 x 150mm L	Chrome
DH-R12S-M200	4.7 x 200mm L	Chrome

HARDWARE HOOKS

Heavy Duty Double Hook



The ideal hook to suit pegboard displays for hanging heavy duty products

Shovels, rakes and other items all suitable for this hook

50mm between prongs

9mm thick

Code	Size	Finish
DH-PD-XX300	9 Thick x 300mm L	Chrome

Shovel Hook



Designed to suit pegboard or metalboard displays

12mm diameter

Holds 6 shovels front on

Code	Size	Finish
DH-PSH-XX370	155 W x 370mm L	Black

Hammer Hook



The hammer hook displays 3 hammers side on with the one fixture

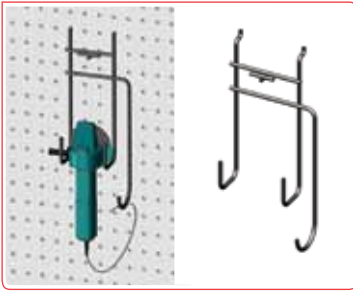
Suits pegboard and metalboard

The middle prong also works as a label holder to ensure your hammers are easily priced - see page 47

Code	Size	Finish
DH-PHH-X250	200 W x 130mm L	Chrome

NEW

Grinder Hook



Code	Size	Finish
DH-PHW-GRIND-BK	59 D x 76 W x 244mm L	Black

The all NEW grinder hook for hardware stores suits pegboard and slotwall

Holds a range of grinders

There is also an area for a label holder to ensure your grinders are easily priced - see page 47

Black

NEW

Circular Saw Hook



Code	Size	Finish
DH-PHW-CRSAW-BK	250 W x 265mm D	Black

The all NEW circular saw hook for hardware stores suits pegboard and slotwall

Holds a range of circular saws

There is also an area for a label holder to ensure your saws are easily priced - see page 47

Black

NEW

Battery Drill Hook



Code	Size	Finish
DH-PHW-BTDRILL-BK	80 W x 179mm L	Black

The all NEW battery drill hook for hardware stores suits pegboard and slotwall

Holds a range of battery operated drills

There is also an area for a label holder to ensure your drills are easily priced - see page 47

Black

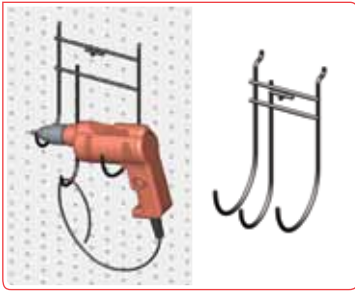
Larger hook 87mm D

Smaller hook 62mm D

HARDWARE HOOKS

NEW

Electric Drill Hook



Code	Size	Finish
DH-PHW-CDDRILL-BK	80 W x 179mm L	Black

The all NEW electric drill hook for hardware stores suits pegboard and slotwall

Holds a range of electric drills

There is also an area for a label holder to ensure your drills are easily priced - see page 47

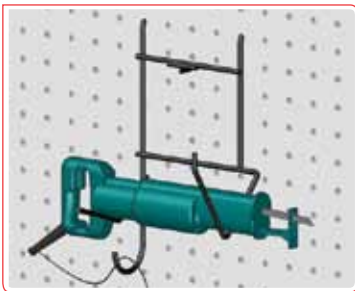
Black

Larger hook 87mm D

Smaller hook 62mm D

NEW

Reciprocating Saw Hook



Code	Size	Finish
DH-PHW-RPSAW-BK	102 W x 120 D x 216mm L	Black

The all NEW reciprocating saw hook for hardware stores suits pegboard and slotwall

Holds a range of reciprocating saws

There is also an area for a label holder to ensure your saws are easily priced - see page 47

Black

Larger hook 87mm D

Smaller hook 62mm D

NEW

Sander Hook



Code	Size	Finish
DH-PHW-SAND-BK	140 W x 223 D x 65mm L	Black

The all NEW sander hook for hardware stores suits pegboard and slotwall

Holds a range of sanders

There is also an area for a label holder to ensure your saws are easily priced - see page 47

Black

Double Ball Hook



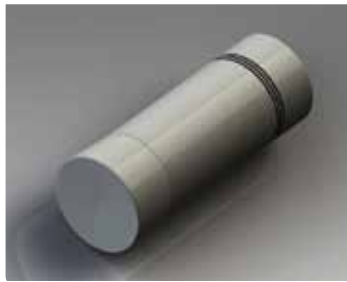
The double ball hook fits pegboard, metalboard and slotwall

Displays 2 balls

450mm diameter

Code	Size	Finish
DB-PBH2-X450	150 W x 400mm L	Chrome

Stop Lock



Magnetic security clip for display hooks

The stop lock is available in red or black

The stop lock clips over your hook and secures your product in place behind it

To remove the stop locks, a magnetic key is required (sold separately)

Suits hooks up to 6mm thick

Ideal for pegboard and slotwall flip scan display hooks - see pages 37 and 39

Code	Size	Finish
DHA-STOP-LOK-RD	19 W x 38mm L	Red
DHA-STOP-LOK-BK	19 W x 38mm L	Black
DHA-MAGKEY	20 Diameter, 45mm L	Silver

Inventory Control Clip



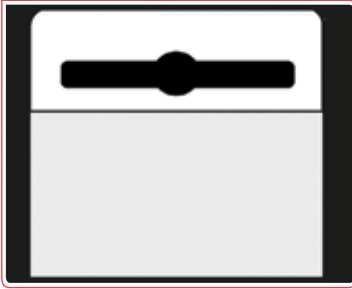
The inventory control clip keeps merchandise at the front of your hook for a full looking product display

Clips easily over most hooks (3.8 to 6.5mm thick)

Code	Size	Finish
DHA-ICLIP	18mm L	White

DISPLAY HOOK HANG TABS

Hang Tab Square



Code	Size	Finish
DHA-HT40E35	35 W x 40mm L	Clear

The square style hang tab is designed specifically for loop hooks and single prong hooks - see pages 37 to 39

Repair broken or damaged packaging with hang tabs or add them to merchandise without pre-punched holes

Ideal for the same stock on the one hook where the front packet only needs to be accessed at one time

Hang Tab Hook



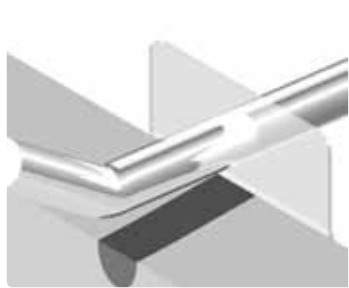
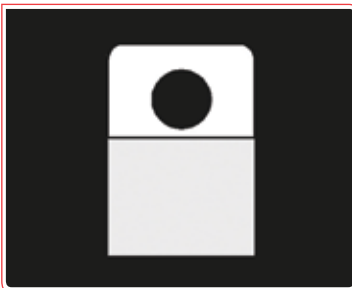
Code	Size	Finish
DHA-HT45025	25 W x 45mm L	Clear

The hook style hang tab is designed specifically for single prong hooks - see pages 37 to 39

Repair broken or damaged packaging with hang tabs or add them to merchandise without pre-punched holes

This hang tab is ideal for use where merchandise on the same hook varies in colour or style, as the back packets on the hook can be removed easily without taking front packets off from the front of the hook

Hang Tab Round



Code	Size	Finish
DHA-HT32R22	22 W x 32mm L	Clear

The round style hang tab is designed specifically for single prong hooks - see pages 37 to 39

Repair broken or damaged packaging with hang tabs or add them to merchandise without pre-punched holes

Ideal for the same stock on the one hook where the front packet only needs to be accessed at one time

Flat Talker Data Strip



Talker grip allows for extra promotional tickets to be added onto your data strip without additional clips

Perfect for shelves with multiple promotions

Self adhesive for flat surfaces

Available in black and clear

Also add pre-printed promotional tickets to your talker data strip - see pages 102 to 105

Code	Size	Finish
DS-ST26BK914	26 H x 914mm L	Black
DS-ST26CL914	26 H x 914mm L	Clear
DS-ST26BK1200	26 H x 1200mm L	Black
DS-ST26CL1200	26 H x 1200mm L	Clear

Angled Talker Data Strip



Talker grip allows for extra promotional tickets to be added onto your data strip without additional clips

Perfect for shelves with multiple promotions

Self adhesive for flat surfaces

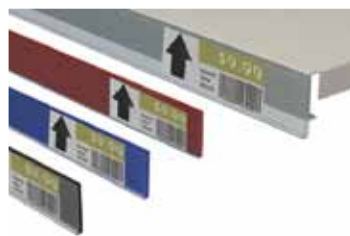
The angled talker data strip is ideal for lower shelves as it angles prices up

Available in black and clear

Also add pre-printed promotional tickets to your talker data strip - see pages 102 to 105

Code	Size	Finish
DS-VT26BK914	26 H x 914mm L	Black
DS-VT26CL914	26 H x 914mm L	Clear
DS-VT26BK1200	26 H x 1200mm L	Black
DS-VT26CL1200	26 H x 1200mm L	Clear

Flat Data Strip



An economical way to price products on shelves

Flat data strip adheres to the front lip of shelving

Available in clear, black, red and blue in 26mm H and clear in 30 and 39mm H

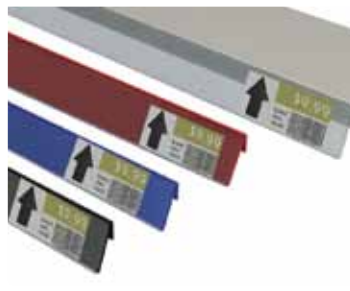
Available in 914 and 1200mm L

Sizes can be cut to suit your shelves (a cutting fee applies)

Code	Size	Finish
DS-S26__914	26 H x 914mm L	Clear, Red, Black or Blue
DS-S26__1200	26 H x 1200mm L	Clear, Red, Black or Blue
DS-S30CL914	30 H x 914mm L	Clear
DS-S30CL1200	30 H x 1200mm L	Clear
DS-S39CL914	39 H x 914mm L	Clear
DS-S39CL1200	39 H x 1200mm L	Clear

* __ insert CL, RD, BK or BL for clear, red, black and blue data strip colours respectively

Angled Data Strip



Code	Size	Finish
DS-V26__914	26 H x 914mm L	Clear, Red, Black or Blue
DS-V26__1200	26 H x 1200mm L	Clear, Red, Black or Blue

* __ insert CL, RD, BK or BL for clear, red, black and blue data strip colours respectively

An economical way to price products on shelves

Flat data strip adheres to the front lip of shelving

Designed for lower shelves to angle prices up

Available in clear, black, red and blue

26mm H

Available in 914 and 1200mm L

Sizes can be cut to suit your shelves (a cutting fee applies)

Top Tape Data Strip



Code	Size	Finish
DS-H26CL914	26 H x 914mm L	Clear
DS-H26CL1200	26 H x 1200mm L	Clear
DS-H30CL914	30 H x 914mm L	Clear
DS-H30CL1200	30 H x 1200mm L	Clear
DS-H39CL914	39 H x 914mm L	Clear
DS-H39CL1200	39 H x 1200mm L	Clear

An economical way to price products on shelves

Top tape data strip adheres to the top of product shelving

Perfect for glass shelving and lower shelves that need a slight angle for pricing visibility

Available in clear only

Available in 26, 30 and 39mm H

Available in 914 and 1200mm L

Sizes can be cut to suit your shelves (a cutting fee applies)

Piggy Back Data Strip



Code	Size	Finish
DS-HG30CL914	30 H x 914mm L	Clear
DS-HG30CL1200	30 H x 1200mm L	Clear

Piggy back data strip adheres to the back of existing data strip to provide an additional layer of promotion

Ideal for pharmacies, warehouses and wholesalers

Available in clear only

30mm H

Available in 914 and 1200mm L

Sizes can be cut to suit your shelves (a cutting fee applies)

Hanging Data Strip



Hanging data strip can be used on wire displays and baskets

Clear clips are included

Available in clear only

Available in 26 and 30mm H

Available in 105, 914 and 1200mm L

Code	Size	Finish
DS-C26105	26 H x 105mm L	Clear
DS-C26CL914	26 H x 914mm L	Clear
DS-C26CL1200	26 H x 1200mm L	Clear
DS-C39CL914	39 H x 914mm L	Clear
DS-C39CL1200	39 H x 1200mm L	Clear

Flip Scan Label Holders



Flip scan label holders are designed to hold your product pricing from display hooks

Available for pegboard (page 37) and slowall hooks (page 39)

Code	Size	Finish
DS-F26__55	26 H x 55mm L	Clear or Black
DS-F26__80	26 H x 80mm L	Clear, Red Or Black
DS-F30CL50	30 H x 50mm L	Clear
DS-F39CL80	39 H x 80mm L	Clear

* __ insert CL, RD or BK for clear, red and black flip scan label holders respectively

Basket Grip Shelf Talker



The basket grip shelf talker is ideal for adding promotional tickets to wire or basket displays

Easily clips over wire to hold your promotional signage

Holds up to 3.8mm in thickness

Use with pre-printed promotional tickets - see pages 102 to 105

Code	Size	Finish
DSA-GB25	25mm L	Clear

DATA STRIP ACCESSORIES

Hinged Shelf Talker Grip



The hinged shelf talker clips onto flat data strip for adding promotional tickets

Hinged grip flips up to reveal previous pricing

Holds up to 3.8mm in thickness

Use with pre-printed promotional tickets - see pages 102 to 105

Code	Size	Finish
DSA-GV25	25mm L	Clear

Vertical Shelf Talker Grip



The vertical shelf talker also clips onto flat data strip for adding promotional tickets

Holds promotional ticket perpendicular to shelf for added impact

Holds up to 3.8mm in thickness

Use with pre-printed promotional tickets - see pages 102 to 105

Code	Size	Finish
DSA-GH30	30mm L	Clear

Spring Wobbler



The spring wobbler can adhere to most flat surfaces

Ideal for product shelving and promotions on temporary displays

The spring wobbler bounces when touched for extra promotional impact

Adhesive top and bottom pads

Add your promotional ticket to one end

Use with pre-printed promotional tickets - see pages 102 to 105

Code	Size	Finish
DSA-AWOB	20 W x 30mm L	Silver spring with adhesive pads

Moulded Locking Clip Strip



An economical clip strip that can be used anywhere to hang your merchandise

12 clips

25mm gap between clips

With label holder for pricing

Locks product packaging in place with small teeth

Available in clear or white

An ideal accessory for metal gondolas - see pages 13 to 17

Code	Size	Finish
CS-PML12-CL	33 W x 590mm L	Clear
CS-PML-12-WT	33 W x 590mm L	White

Single Plastic Clip Strip



An economical clip strip that can be used anywhere to hang your merchandise

12 clips

Easy to hang and remove product merchandise

An ideal accessory for metal gondolas - see pages 13 to 17

Code	Size	Finish
CS-PS12	910mm L	Opaque

Double Plastic Clip Strip



An economical clip strip that can be used anywhere to hang your merchandise

12 clips

Locks product packaging in place with teeth

Easy to hang and remove product merchandise

An ideal accessory for metal gondolas - see pages 13 to 17

Code	Size	Finish
CS-PL12	910mm L	Opaque

CLIP STRIPS

Slider Clip Strip



An innovative clip strip to hold any package with or without pre-punched holes

With the gripping strength of a metal clip strip

12 clips

With label holder for pricing

Available in white

An ideal accessory for metal gondolas - see pages 13 to 17

Code	Size	Finish
CS-PMN12	25 W x 790mm L	White

Fastload Clip Strip



An economical clip strip that can be used anywhere to hang your merchandise

12 clips

With label holder for pricing

Locks product packaging in place with teeth

Easy to hang and remove product merchandise

An ideal accessory for metal gondolas - see pages 13 to 17

Code	Size	Finish
CS-PMF12	25 W x 610mm L	Opaque

Duo Clip Strip



The duo clip strip has two purposes to suit your packaging

Hang your product over the top of the clip or use the bottom of the clip to pinch your product in place

12 clips

Label holder can also be added for pricing

Easy to hang and remove product merchandise

An ideal accessory for metal gondolas - see pages 13 to 17

Code	Size	Finish
CS-PMD12	20 W x 740mm L	White

Cable Ties



A simple solution to hang your clip strips and other products

Permanently locks clip strips, signage and products in place

Available in 100-300mm L

Code	Size	Finish
CS-CBL-100CL	100mm L	Opaque
CS-CBL-150CL	150mm L	Opaque
CS-CBL-200CL	200mm L	Opaque
CS-CBL-300CL	300mm L	Opaque

Hooks



Hang clip strips, signs and other products from S and J hooks

S hooks are available in 2 sizes

Code	Size	Finish
CSA-SHK25	3 Thick, 25mm L	Zinc
CSA-SHK50	3 Thick, 50mm L	Zinc
CSA-JHK38	2.5 Thick, 38mm L	Zinc

Ring Hook



A simple solution to hang your clip strips and other products

Open and close clasp to lock clip strips, signage and products in place

38mm diameter

Code	Size	Finish
CSA-MLR38	38mm Diameter	Chrome

SHOPPING BASKET KITS

Red Basket Kit



Code	Size	Finish
BB-BAL20KITRD	330 W x 480 L x 890mm H	Red Baskets, Chrome Stand

Affordable shopping baskets for your store in a neat, compact display

This shopping basket kit includes 20 large red shopping baskets with base on castors, sign holder and card

Keep customers in your store for longer by positioning at store entrances

Make sure your kit is fully stocked during busy times throughout the day

Baskets also sold separately - see page 53

Black Basket Kit



Code	Size	Finish
BB-BAL20KITBK	330 W x 480 L x 890mm H	Black Baskets, Chrome Stand

An affordable to buy shopping baskets for your store in a neat, compact display

This shopping basket kit includes 20 large black shopping baskets with base on castors, sign holder and card

Keep customers in your store for longer by positioning at store entrances

Make sure your kit is fully stocked during busy times throughout the day

Baskets also sold separately - see page 53

Blue Basket Kit



Code	Size	Finish
BB-BAL20KITBL	330 W x 480 L x 890mm H	Blue Baskets, Chrome Stand

An affordable to buy shopping baskets for your store in a neat, compact display

This shopping basket kit includes 20 large blue shopping baskets with base on castors, sign holder and card

Keep customers in your store for longer by positioning at store entrances

Make sure your kit is fully stocked during busy times throughout the day

Baskets also sold separately - see page 53

Basket Trolley



The versatile basket trolley is ideal for smaller aisles

Carry just as much with the basket trolley as conventional shopping trolleys

Holds 3 shopping baskets

Stylish and sturdy design

Includes blank paper in the handle for printing your own message

Code	Size	Finish
BB-BATR3	430 W x 650 L x 900mm H	Chrome

Shopping Baskets



Shopping baskets are available in red, black and blue

These large shopping baskets can hold more product than traditional shopping baskets

Solid design

Add to basket trolley - see above

Code	Size	Finish
BB-BAL-BL	330 W x 480 L x 260mm H	Blue
BB-BAL-RD	330 W x 480 L x 260mm H	Red
BB-BAL-BK	330 W x 480 L x 260mm H	Black

NEW

Shopping Bag Dispenser



The all NEW shopping bag dispenser is ideal for grocery and convenience stores

Solid design with handles and bag tab

Sturdy base

Can easily be screwed into your counter or hung from hooks on a side wall

Code	Size	Finish
BB-SBD	310 W x 250 D x 390mm H	Chrome

SLOTWALL ACCESSORIES

Slotwall Hangrail



The slotwall hangrail is a standard simple solution for hanging garments on freestanding slotwall gondolas or slotwall

12mm thick

Also available for wall strip - see page 27

Hang and shelve at the same time with the HangShelf™ for slotwall - see page 57

Code	Size	Finish
SW-HR12-600	300 D x 600mm L	Chrome
SW-HR12-900	300 D x 900mm L	Chrome
SW-HR12-1200	300 D x 1200mm L	Chrome

Slotwall Straight Arm Square



A simple solution for displaying garments on freestanding slotwall gondolas (pages 22-23) and wall panels front on

Square style tube with tab

Available in 300 and 400mm L

Also available for wall strip - see page 30

Code	Size	Finish
SW-S300S	13 W x 300mm L	Chrome
SW-S400S	13 W x 400mm L	Chrome

Slotwall Straight Arm Round



A simple solution for displaying garments on freestanding slotwall gondolas (page) and wall panels front on

Round style tube with round end

Available in 300 and 400mm L

Also available for wall strip - see page 30

Code	Size	Finish
SW-SS-TFL	15.9 Diameter, 300mm L	Chrome

Slotwall Crank Arm



Hang garments front on from 2 levels with the slotwall crank arm

To suit freestanding slotwall gondolas (pages 22-23) and slotwall

370mm L

Code	Size	Finish
SW-C370	12.9 Thick x 200 Drop x 370mm L	Chrome

Slotwall Waterfall arm



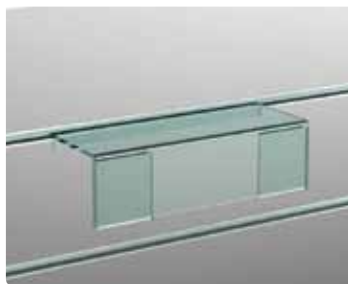
Utilise merchandise layering with the waterfall arm for slotwall

To suit freestanding slotwall gondolas (pages 22-23) and slotwall

Available in 6 and 9 pin styles

Code	Size	Finish
SW-WS-6P	18 W x 400mm L	Chrome
SW-WS-9P	18 W x 500mm L	Chrome

Slotwall Shoe Shelf Flat



Perfect for displaying a range of shoes on freestanding slotwall gondolas (pages 22-23) or slotwall

With sign holder lip for easy signage

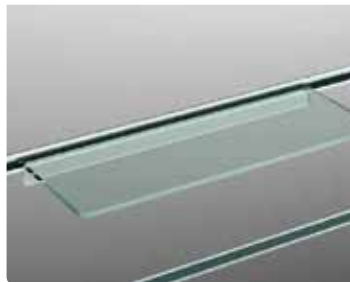
250mm L

Acrylic

Code	Size	Finish
SW-ASD250SH	100 W x 250mm L	Clear

SLOTWALL ACCESSORIES

Slotwall Shoe Shelf Flat



An economical way to display a range of shoes on your freestanding slotwall gondola (page) or slotwall

Use with a combination of other shoe shelves to enhance the display

250mm L

Acrylic

Code	Size	Finish
SW-ASD	100 W x 250mm L	Clear

Slotwall Shoe Shelf Front Angle



An economical way to display a range of shoes on freestanding slotwall gondolas (pages 22-23) or slotwall

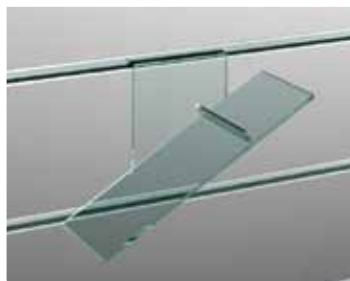
Ideal for displaying a lot of shoes on the one slotwall panel front on

250mm L

Acrylic

Code	Size	Finish
SW-ASDA	100 W x 250mm L	Clear

Slotwall Shoe Shelf Left Angle



A stylish way to display a range of shoes on freestanding slotwall gondolas (pages 22-23) or slotwall

Angled to the left to show shoes from the side

250mm L

Acrylic

Code	Size	Finish
SW-ASDL	80 W x 210 H x 250mm L	Clear

HangShelf™ for Slotwall



The HangShelf™ is unique to SI Retail

Created to satisfy the need for both hanging garments and shelving products on the one fitting

Perfect for fashion retailers maximising their space

Available with glass, black, white or red cherry melamine shelves

Available in 600, 900 and 1200mm lengths

Now also designed to specifically suit the H rack freestanding gondolas in white and maple - see pages 22 to 23

Code	Size	Style
SW-HR12-600__-T	300 W x 600mm L	For Slotwall
SW-HR12-900__-T	300 W x 900mm L	For Slotwall
SW-HR12-1200__-T	300 W x 1200mm L	For Slotwall
DC-HR12-600__-T	300 W x 600mm L	For H Rack Freestanding Gondolas
DC-HR12-900__-T	300 W x 900mm L	For H Rack Freestanding Gondolas

* __ insert SG for glass, WT for white, BK for black, RC for red cherry

Glass Shelving



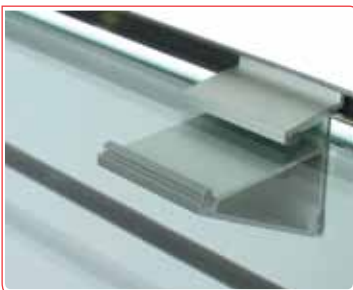
Toughened glass shelves are ideal for retailers looking for clean, professional displays that highlight merchandise

The SI Retail glass range suits:
Freestanding slotwall gondolas (pages 22-23)
Wall strip (page 26)
Livewire™ cable display systems (page 68)
Glass cubing displays (pages 32-33)

Available in many sizes to suit your needs

Code	Size	Finish & Style
TF-G600T300CL8	300 W x 600 L x 8mm Thick	Clear
TF-G900T300CL8	300 W x 900 L x 8mm Thick	Clear
SF-HR12G-380-CL	255 W x 380 L x 8mm Thick	For Fixed Tower Gondolas
SF-HR12G-880-CL	255 W X 880 L x 8mm Thick	For 910mm Star Gondola
SF-HR12G-1180-CL	255 W x 1180 L x 8mm Thick	For H Rack Gondola Length

Slotwall Shelf Clip



The shelf bracket is a great new slotwall accessory that caters to our glass shelving range

Add to freestanding slotwall gondolas (pages 22-23) or slotwall panels in-store

One fitting suits 6, 8 and 10mm thick shelves

Rubber stoppers on the shelf clip adjust to hold the varying thicknesses and prevent glass from being scratched

Code	Size	Finish
SW-BC-50	50 W x 70mm D	Satin Chrome

SLOTWALL ACCESSORIES

Slotwall Straight Bracket



A tried and true method for all product shelving

Designed specifically for slotwall panels and the freestanding slotwall displays - see pages 22 to 23

Available in 150 to 400mm L

Use 2 brackets for each shelf length and connect multiple shelves for a larger area with shelf bracket grommets - see below

Code	Size	Finish
SW-BS-150	150mm L	Chrome
SW-BS-200	200mm L	Chrome
SW-BS-250	250mm L	Chrome
SW-BS-300	300mm L	Chrome
SW-BS-350	350mm L	Chrome
SW-BS-450	400mm L	Chrome

Shelf Bracket Grommets



Shelf grommets attach to slotwall and wall strip brackets and are designed to prevent shelf scratches and provide extra stability to the shelf itself

Choose an end or centre grommet to suit your needs

End grommets support just a single shelf on 1 bracket

Centre grommets are used to hold 2 shelves on 1 bracket, saving costs and creating a streamlined look

Code	Size	Finish
WSA-END-GR	Double Sided	Clear with Rubber Plugs
WSA-CEN-GR	Single Sided	Clear with Rubber Plugs

Slotwall Sign Holders



Acrylic sign holders designed to suit freestanding slotwall gondolas (pages 22-23) and slotwall

Available in A4, A5 and A6

Add price points above your hooks or shelves on the slotwall displays

Use with pre-printed promotional tickets - see pages 102 to 105

Code	Size	Style
SW-ASH-MA4LS	297 W x 210mm H	A4 Landscape
SW-ASH-MA4PT	210 W x 297mm H	A4 Portrait
SW-ASH-MA5LS	210 W x 148.5mm H	A5 Landscape
SW-ASH-MA5PT	148.5 W x 210mm H	A5 Portrait
SW-ASH-MA6PT	105 W x 148.5mm H	A6 Portrait

Slotwall Single Prong Hooks



An economical display hook specifically for slotwall panels and the freestanding slotwall gondolas - see pages 22-23

Available in 50 to 300mm L

5.3mm thick

Our pegboard display hooks are also designed to suit slotwall and the slotwall gondola range - see page 37

Code	Size	Finish
DH-SS-H50	5.3 x 50mm L	Chrome
DH-SS-H100	5.3 x 100mm L	Chrome
DH-SS-H150	5.3 x 150mm L	Chrome
DH-SS-H200	5.3 x 200mm L	Chrome
DH-SS-H250	5.3 x 250mm L	Chrome
DH-SS-H300	5.3 x 300mm L	Chrome

Slotwall Flipscan Hooks



Slotwall flip scan display hooks suit slotwall panels

Available in heavy duty

An economical hook that displays pricing as well as the product

The flip scan label holder is detachable and flips out of the way for easy product viewing

Also suits hang tabs for damaged product packaging - see page 44

Code	Size	Finish
DH-SF-H100__T	5.3 x 100mm L	Chrome with Label Holder Colour of Choice
DH-SF-H150__T	5.3 x 150mm L	Chrome with Label Holder Colour of Choice
DH-SF-H200__T	5.3 x 200mm L	Chrome with Label Holder Colour of Choice

* __ insert CL, RD or BK for clear, red and black flip scan label holders respectively



GARMENT RACKS

2 Way Garment Rack



The 2 way garment rack is perfect for small retail spaces to hang garments

With a straight arm and a 9 pin waterfall arm

Adjustable height to create layered displays

Increments of 75mm

Solid base 300 x 380mm

Code	Size	Finish
GR-2-2TF-T	1200-1800mm H	Chrome

2 Way Garment Rack Waterfall



The 2 way garment rack is perfect for small retail spaces to hang garments

With 9 pin waterfall arms

Adjustable height to create layered displays

Increments of 75mm

Solid base 300 x 380mm

Code	Size	Finish
GR-2-TFWF9P-T	1200-1800mm H	Chrome

2 Way Garment Rack Straight



The 2 way garment rack is perfect for small retail spaces to hang garments

With straight arms

Adjustable height to create layered displays

Increments of 75mm

Solid base 300 x 380mm

Code	Size	Finish
GR-2-2WF9P-T	1200-1800mm H	Chrome

4 Way Garment Rack



The 4 way garment rack is perfect for displaying more merchandise at 4 angles

With 2 straight arms and 2 9 pin waterfall arms

Adjustable height to create layered displays

Increments of 75mm

Flat packs for affordable shipping

Add castors to the base to create an easy to manoeuvre display - see page 65

Signage can be added to the middle for increased exposure - see page 64

Code	Size	Finish
GR-4-2TF2WF9P-T	1200-1800mm H	Chrome

4 Way Garment Rack Waterfall



The 4 way garment rack is perfect for displaying more merchandise at 4 angles

With 4 9 pin waterfall arms

Adjustable height to create layered displays

Increments of 75mm

Flat packs for affordable shipping

Add castors to the base to create an easy to manoeuvre display - see page 65

Signage can be added to the middle for increased exposure - see page 64

Code	Size	Finish
GR-4-4WF9P-T	1200-1800mm H	Chrome

4 Way Garment Rack Straight



The 4 way garment rack is perfect for displaying more merchandise at 4 angles

With 4 straight arms

Adjustable height to create layered displays

Increments of 75mm

Flat packs for affordable shipping

Add castors to the base to create an easy to manoeuvre display - see page 65

Signage can be added to the middle for increased exposure - see page 64

Code	Size	Finish
GR-4-4TF-T	1200-1800mm H	Chrome

GARMENT RACKS

Mobile Garment Rack



Code	Size	Finish
GR-MOBILE	1200-1650 H, 1200-1850mm W	Chrome

A popular garment rack for temporary displays, markets and events

Available in single and double styles

On solid castors for easy transport

Adjustable height and width

Signage can be added to the main tube for added exposure - see page 65

Flat packs for easy storage and shipping

Easy to assemble

Double Mobile Garment Rack



Code	Size	Finish
GR-MOBILE-2R	1320-1563 H, 1270-1860mm W	Chrome

Ideal for excess merchandise for temporary displays, markets and events

Available in single and double styles

On solid castors for easy transport

Adjustable height and width

Signage can be added to the main tube for added exposure - see page 65

Flat packs for easy storage and shipping

Easy to assemble

Ring Rack



Code	Size	Finish
GR-SR940	1080-1540mm H	Chrome

A 360 degree garment rack perfect for creating a full display with merchandise

940mm diameter

Adjustable height

Tri Level Rack



A variation of the ring rack

The tri level garment rack is a 360 degree garment rack where all 3 sides can be adjusted in height to change display levels

Folding frame for easy storage and shipping

Add castors to the base to create an easy to manoeuvre display - see page 65

Code	Size	Finish
GR-TL1060	1200-1800mm	Chrome

Half Round Rack



The half round garment rack is perfect to use against walls and storefront windows

1100mm diameter

On castors for easy transport

Code	Size	Finish
GR-HR1100	1370-1900mm H	Chrome

Lingerie Rack



Perfect for smaller garments such as lingerie

Includes 16 twist on arms

Folding frame for easy storage

Add castors to the base to create an easy to manoeuvre display - see page 65

Code	Size	Finish
GR-LT16	485 Base, 1500 H, 300mm L Arms	Chrome

GARMENT RACK ACCESSORIES

A4 Sign Holders



A4 sign holders for 2 way and 4 way garment racks

Available in A4 portrait and landscape

Clamps over middle of 4 way garment racks (page 61) with sign clamp base - see below

Screws directly into 2 way garment racks (page 60)

Kit includes a 150mm stem and acrylic A4 sign holder

Pre-printed tickets can be purchased separately - see pages 102 to 105

Code	Size	Style
GRA-SHM-A150A4PT-T	150mm Stem	A4 Portrait
GRA-SHM-A150A4LS-T	150mm Stem	A4 Landscape

A5 Sign Holders



A5 sign holders for 2 way and 4 way garment racks

Available in A5 portrait and landscape

Clamps over middle of 4 way garment racks (page 61) with sign clamp base - see below

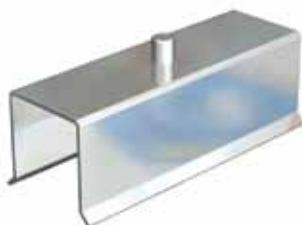
Screws directly into 2 way garment racks (page 60)

Kit includes a 150mm stem and acrylic A4 sign holder

Pre-printed tickets can be purchased separately - see pages 102 to 105

Code	Size	Style
GRA-SHM-A150A5PT-T	150mm Stem	A5 Portrait
GRA-SHM-A150A5LS-T	150mm Stem	A5 Landscape

4 Way Sign Clamps



Add to the garment rack sign holders for use on 4 way garment racks

Also available for the mobile garment racks - see page 65

Suits 25mm tube

Chrome

Code	Size	Finish
GRA-SC25	Fits 25mm Square Tube	Chrome

Mobile Garment Rack Sign Clamp



Add to the garment rack sign holders for use on 4 way garment racks

Also available for the 4 way garment rack - see page 64

Suits 25mm round tube

Chrome

Code	Size	Finish
GRA-SCRND25	Fits 25mm Round Tube	Chrome

Easy Clips



Especially designed to suit the mobile garment racks - see page 62

This spring clip has 2 grips - one for placement and the other for signage on a short or long stem

Clamps easily onto any 25mm tube

These clips can hold 6mm thick signage

Ball sockets enable the clip to swivel around to desired position

Use with pre-printed tickets - see pages 102 to 105

A full range of easy clips is available, see page

Code	Size	Finish
SH-SW0007	75 W x 80mm H	Clear
SH-SW0008	75 W x 159mm H	Clear

Castors



Choose from lockable or free wheeling castors to add to your garment racks

Transportable garment racks allow new areas within the store to be tested to find the best selling points

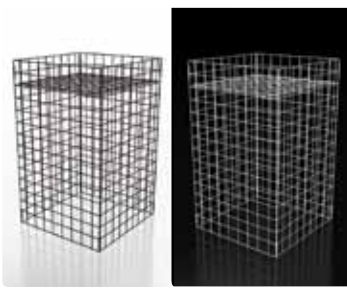
Attach to 4 way, ring, tri level and lingerie garment racks - see pages 62 to 63

Black

Code	Style	Finish
GRA-CASTOR	Free Wheel for Garment Racks	Black
GRA-CASTORL	Lockable Wheel for Garment Racks	Black
CB-ST-CASTOR-L	Locakable Wheel for Cable Display	Black

DISPLAY STANDS

Dump Bins (no base)



Code	Size	Finish
BB-DBS460BK	460 W x 460 L x 750mm H	Black
BB-DBS460WT	460 W x 460 L x 750mm H	White
BB-DBS620BK	620 W x 620 L x 900mm H	Black
BB-DBS620WT	620 W x 620 L x 900mm H	White

Dump bins are in-store display stands used to display popular stock, clearance lines or for storage purposes

Dump bins without the base are easy to transport and can be flat packed when not in use

Position in high traffic areas

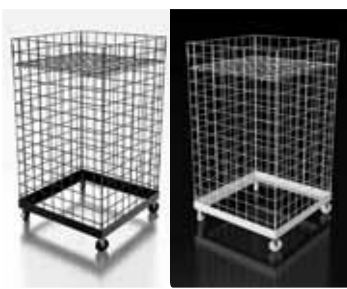
Available in 2 sizes

Available in black or white square style

Includes wire shelf to adjust product positioning in display

Use with the acrylic dump bin signage range below and ticket frames (pages 92-94)

Dump Bins (with base)



Code	Size	Finish
BB-DBS460BK-T	460 x 460 x 820mm H	Black
BB-DBS460WT-T	460 x 460 x 820mm H	White
BB-DBS620BK-T	620 x 620 x 970mm H	Black
BB-DBS620WT-T	620 x 620 x 970mm H	White

Dump bins are in-store display stands used to display popular stock, clearance lines or for storage purposes

Dump bins with a removable base are easy to manoeuvre in-store with solid lockable castors

Position in high traffic areas

Available in 2 sizes

Available in black or white square style

Includes wire shelf to adjust product positioning in display

Use with the acrylic dump bin signage range below and ticket frames (pages 92-94)

Dump Bin Accessories



Code	Size	Style & Finish
SH-DB-LA4PT	210 W x 297mm H	A4 Portrait Acrylic Sign Holder
SH-DB-LA4LS	297 W x 210mm H	A4 Landscape Acrylic Sign Holder
SH-DB-LA3PT	297 W x 420mm H	A3 Portrait Acrylic Sign Holder
SH-DB-LA3LS	420 W x 297mm H	A3 Landscape Acrylic Sign Holder
ES-CORFLUTE		Customised Corflute Surround

Add acrylic signage and corflute surrounds to your dump bins to enhance your branding and promotions

Acrylic signage designed for dump bins comes in A4 and A3 sizes

Customise your own corflute dump bin surround for promotions and brand enhancement - call us for a quote today

NEW

Double Sided Handbag Stand



Code	Size	Finish
ST-CHB570-D	175mm L x 160mm D	Chrome

NEW double sided handbag stand

Get maximum handbag exposure in-store with the one stand

High quality heavy duty stand

Adjustable height from 310 to 560mm

Ideal for counter and table use

Unobtrusive stand for small spaces

Combine with acrylic sign holders to display pricing - see page 83

Single Sided Handbag Stand



Code	Size	Finish
ST-CHB570	140mm L x 150mm D	Chrome

Single sided handbag stand

High quality heavy duty stand

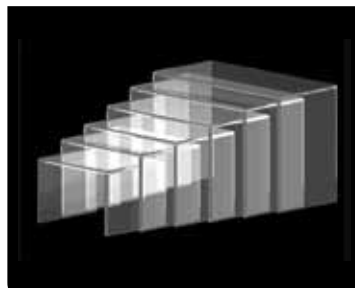
Adjustable height from 310mm to 560mm

Ideal for counter and table use

Unobtrusive stand for small spaces

Combine with acrylic sign holders to display pricing - see page 83

Acrylic Risers



Code	Size	Finish
CD-RISER6-4A	100 W x 120 - 220mm L	Clear
CD-RISER6-4AF	100 W x 120 - 220mm L	Frosted

Acrylic risers are available in clear acrylic or frosted finish

Perfect for counter and table use in-store to highlight smaller merchandise at varying levels

Use together or separately

Set of 6 risers

Combine with acrylic sign holders to display pricing - see page 83

LIVEWIRE™ CABLE DISPLAY SYSTEM

Bracket Freestanding Shelf Kit



A unique way to shelve your products

Ideal for temporary displays and as an in-store retail shelving option

Sold as a complete kit with 3 shelves

Lockable castors sold separately for easy manoeuvring - see page 65

Grey metal shelves 310 W x 880mm L

Anodised aluminium frame

Code	Size	Finish
CB-STK-MSB3-T	990 W x 2070mm H	Silver
CB-ST-CASTOR-L	Lockable Wheel for Cable Display	Black

Wire Freestanding Shelf Kit



A stylish cable wire shelving option for retailers

Sold complete with all components shown

Lockable castors sold separately for easy manoeuvring - see page 65

Grey metal shelves 310 W x 450mm L

Anodised aluminium frame

Code	Size	Finish
CB-STK-MSW3-T	1090 W x 2070mm H	Silver
CB-ST-CASTOR-L	Lockable Wheel for Cable Display	Black

2 x 1 Glass Shelf Kit



Choose from a variety of cable display shelving kit options

2 glass shelves

Adjust to your own height along the cable

Available with 330 and 450mm L shelves

A4 landscape and A3 portrait signage can be added to the 330 kit - see page 81

A3 landscape signage can be added to the 450 kit - see page 81

Code	Size	Finish
CB-GWK-21-3-T	2 Shelves 300 W x 330mm L	Glass with Soft Chrome Connectors
CB-GWK-21-4-T	2 Shelves 300 W x 450mm L	Glass with Soft Chrome Connectors

3 x 1 Glass Shelf Kit



Code	Size	Finish
CB-GWK-31-3-T	3 Shelves 300 W x 330mm L	Glass with Soft Chrome Connectors
CB-GWK-31-4-T	3 Shelves 300 W x 450mm L	Glass with Soft Chrome Connectors

Choose from a variety of cable display shelving kit options

3 glass shelves

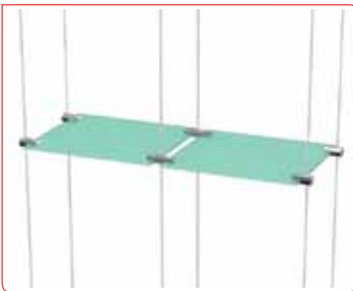
Adjust to your own height along the cable

Available with 330 and 450mm L shelves

A4 landscape and A3 portrait signage can be added to the 330 kit - see page 81

A3 landscape signage can be added to the 450 kit - see page 81

2 x 2 Glass Shelf Kit



Code	Size	Finish
CB-GWK-22-3-T	2 Shelves 300 W x 330mm L	Glass with Soft Chrome Connectors
CB-GWK-22-4-T	2 Shelves 300 W x 450mm L	Glass with Soft Chrome Connectors

Choose from a variety of cable display shelving kit options

2 glass shelves

660 and 900mm L configurations

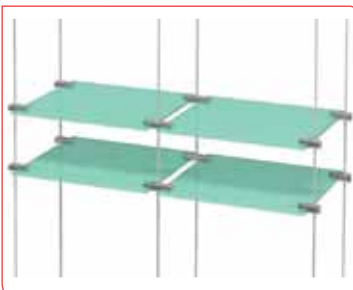
Adjust to your own height along the cable

Available with 330 and 450mm L shelves

A4 landscape and A3 portrait signage can be added to the 330 kit - see page 81

A3 landscape signage can be added to the 450 kit - see page 81

4 x 2 Glass Shelf Kit



Code	Size	Finish
CB-GWK-42-3-T	4 Shelves 300 W x 330mm L	Glass with Soft Chrome Connectors
CB-GWK-42-4-T	4 Shelves 300 W x 450mm L	Glass with Soft Chrome Connectors

Choose from a variety of cable display shelving kit options

4 glass shelves

660 and 900mm L configurations

Adjust to your own height along the cable

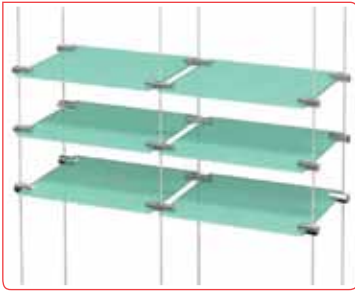
Available with 330 and 450mm L shelves

A4 landscape and A3 portrait signage can be added to the 330 kit - see page 81

A3 landscape signage can be added to the 450 kit - see page 81

LIVEWIRE™ CABLE DISPLAY SYSTEM

6 x 2 Glass Shelf Kit



Code	Size	Finish
CB-GWK-62-3-T	4 Shelves 300 W x 330mm L	Glass with soft chrome connectors
CB-GWK-62-4-T	4 Shelves 300 W x 450mm L	Glass with soft chrome connectors

Choose from a variety of cable display shelving kit options

6 glass shelves

660 and 900mm L configurations

Adjust to your own height along the cable

Available with 330 and 450mm L shelves

A4 landscape and A3 portrait signage can be added to the 330 kit - see page 81

A3 landscape signage can be added to the 450 kit - see page 81

8 A4 Ceiling to Floor Sign Kit



Code	Size	Finish
CB-WK-8A4PT-T	600mm W	Acrylic Sign Holders, Silver Connectors

Choose from a variety of cable display sign kit options

Adjust to your own height along the cable

Attaches directly to your ceiling and floor

To suit ceilings up to 4m

In this kit:

- 8 x A4 portrait sign holders
- 16 x 1 way sign holder grips
- 8 x 2 way sign holder grips
- 3 x 4m cable wire
- 3 x top connectors
- 3 x bottom connectors

Make your own kit, see all the components on pages 80 to 82

12 A4 Ceiling to Floor Sign Kit



Code	Size	Finish
CB-WK-12A4PT-T	900mm W	Acrylic Sign Holders, Silver Connectors

Choose from a variety of cable display sign kit options

Adjust to your own height along the cable

Attaches directly to your ceiling and floor

To suit ceilings up to 4m

In this kit:

- 12 x A4 portrait sign holders
- 16 x 1 way sign holder grips
- 16 x 2 way sign holder grips
- 4 x 4m cable wire
- 4 x top connectors
- 4 x bottom connectors

Make your own kit, see all the components on pages 80 to 82

16 A4 Ceiling to Floor Sign Kit



Code	Size	Finish
CB-WK-16A4PT-T	1200mm W	Acrylic Sign Holders, Silver Connectors

Choose from a variety of cable display sign kit options

Adjust to your own height along the cable

Attaches directly to your ceiling and floor

To suit ceilings up to 4m

In this kit:

16 x A4 portrait sign holders

16 x 1 way sign holder grips

24 x 2 way sign holder grips

5 x 4m cable wire

5 x top connectors

5 x bottom connectors

Make your own kit, see all the components on pages 80 to 82

3 A3 Ceiling to Floor Sign Kit



Code	Size	Finish
CB-WK-3A3PT-T	600mm W	Acrylic Sign Holders, Silver Connectors

Choose from a variety of cable display sign kit options

Adjust to your own height along the cable

Attaches directly to your ceiling and floor

To suit ceilings up to 4m

In this kit:

3 x A3 portrait sign holders

12 x 1 way sign holder grips

2 x 4m cable wire

2 x top connectors

2 x bottom connectors

Make your own kit, see all the components on pages 80 to 82

6 A3 Ceiling to Floor Sign Kit



Code	Size	Finish
CB-WK-6A3PT-T	900mm W	Acrylic Sign Holders, Silver Connectors

Choose from a variety of cable display sign kit options

Adjust to your own height along the cable

Attaches directly to your ceiling and floor

To suit ceilings up to 4m

In this kit:

6 x A3 portrait sign holders

12 x 1 way sign holder grips

6 x 2 way sign holder grips

3 x 4m cable wire

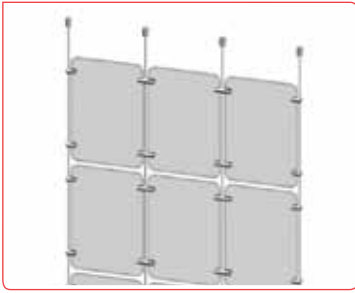
3 x top connectors

3 x bottom connectors

Make your own kit, see all the components on pages 80 to 82

LIVEWIRE™ CABLE DISPLAY SYSTEM

9 A3 Ceiling to Floor Sign Kit



Code	Size	Finish
CB-WK-9A3PT-T	1200mm W	Acrylic Sign Holders, Silver Connectors

Choose from a variety of cable display sign kit options

Adjust to your own height along the cable

Attaches directly to your ceiling and floor

To suit ceilings up to 4m

In this kit:

- 9 x A3 portrait sign holders
- 12 x 1 way sign holder grips
- 12 x 2 way sign holder grips
- 4 x 4m cable wire
- 4 x top connectors
- 4 x bottom connectors

Make your own kit, see all the components on pages 80 to 82

4 A3 Ceiling to Sign Kit



Code	Size	Finish
CB-WK-4A3LS-T	600mm W	Acrylic Sign Holders, Silver Connectors

Choose from a variety of cable display sign kit options

Adjust to your own height along the cable

Attaches directly to your ceiling and floor

To suit ceilings up to 4m

In this kit:

- 4 x A3 landscape sign holders
- 16 x 1 way sign holder grips
- 2 x 4m cable wire
- 2 x top connectors
- 2 x bottom connectors

Make your own kit, see all the components on pages 80 to 82

8 A3 Ceiling to Sign Kit



Code	Size	Finish
CB-WK-8A3LS-T	1200mm W	Acrylic Sign Holders, Silver Connectors

Choose from a variety of cable display sign kit options

Adjust to your own height along the cable

Attaches directly to your ceiling and floor

To suit ceilings up to 4m

In this kit:

- 8 x A3 landscape sign holders
- 16 x 1 way sign holder grips
- 8 x 2 way sign holder grips
- 3 x 4m cable wire
- 3 x top connectors
- 3 x bottom connectors

Make your own kit, see all the components on pages 80 to 82

2 A2 Ceiling to Floor Sign Kit



Choose from a variety of cable display sign kit options

Adjust to your own height along the cable

Attaches directly to your ceiling and floor

To suit ceilings up to 4m

In this kit:

2 x A2 portrait sign holders

8 x 1 way sign holder grips

2 x 4m cable wire

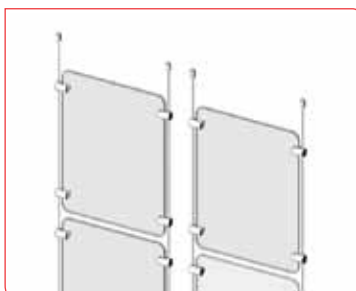
2 x top connectors

2 x bottom connectors

Make your own kit, see all the components on pages 80 to 82

Code	Size	Finish
CB-WK-2A2PT-T	600mm W	Acrylic Sign Holders, Silver Connectors

4 A2 Ceiling to Floor Sign Kit



Choose from a variety of cable display sign kit options

Adjust to your own height along the cable

Attaches directly to your ceiling and floor

To suit ceilings up to 4m

In this kit:

4 x A2 portrait sign holders

16 x 1 way sign holder grips

4 x 4m cable wire

4 x top connectors

4 x bottom connectors

Make your own kit, see all the components on pages 80 to 82

Code	Size	Finish
CB-WK-4A2PT-T	1200mm W	Acrylic Sign Holders, Silver Connectors

8 A4 Tracking Sign Kit



Sign holders and cable components attach to tracking system and can be slid across to adjust positioning

Adjust to your own height along the cable

To suit ceilings up to 4m

In this kit:

8 x A4 portrait sign holders

32 x 1 way sign holder grips

4 x 4m cable wire

4 x ceiling connectors

4 x top connectors

2 x bottom rails

Make your own kit, see all the components on pages 80 to 82

Code	Size	Finish
CB-TK-8A4PT-T	600mm W x 2m L	Acrylic Sign Holders, Silver Connectors & Tracking

LIVEWIRE™ CABLE DISPLAY SYSTEM

12 A4 Tracking Sign Kit



Sign holders and cable components attach to tracking system and can be slid across to adjust positioning

Adjust to your own height along the cable

To suit ceilings up to 4m

In this kit:
 12 x A4 portrait sign holders
 16 x 1 way sign holder grips
 16 x 2 way sign holder grips
 4 x 4m cable wire
 4 x top connectors
 4 x bottom connectors
 2 x tracking rails

Make your own kit, see all the components on pages 80 to 82

Code	Size	Finish
CB-TK-12A4PT-T	900mm W x 2m L	Acrylic Sign Holders, Silver Connectors & Tracking

16 A4 Tracking Sign Kit



Sign holders and cable components attach to tracking system and can be slid across to adjust positioning

Adjust to your own height along the cable

To suit ceilings up to 4m

In this kit:
 16 x A4 portrait sign holders
 16 x 1 way sign holder grips
 24 x 2 way sign holder grips
 5 x 4m cable wire
 5 x top connectors
 5 x bottom connectors
 2 x tracking rails

Make your own kit, see all the components on pages 80 to 82

Code	Size	Finish
CB-TK-16A4PT-T	1200mm W x 2m L	Acrylic Sign Holders, Silver Connectors & Tracking

3 A3 Tracking Sign Kit



Sign holders and cable components attach to tracking system and can be slid across to adjust positioning

Adjust to your own height along the cable

To suit ceilings up to 4m

In this kit:
 3 x A3 portrait sign holders
 12 x 1 way sign holder grips
 2 x 4m cable wire
 2 x top connectors
 2 x bottom connectors
 2 x tracking rails

Make your own kit, see all the components on pages 80 to 82

Code	Size	Finish
CB-TK-3A3PT-T	600mm W x 2m L	Acrylic Sign Holders, Silver Connectors & Tracking

6 A3 Tracking Sign Kit



Code	Size	Finish
CB-TK-6A3PT-T	900mm W x 2m L	Acrylic Sign Holders, Silver Connectors & Tracking

Sign holders and cable components attach to tracking system and can be slid across to adjust positioning

Adjust to your own height along the cable

To suit ceilings up to 4m

In this kit:

- 6 x A3 portrait sign holders
- 24 x 1 way sign holder grips
- 4 x 4m cable wire
- 4 x top connectors
- 4 x bottom connectors
- 2 x tracking rails

Make your own kit, see all the components on pages 80 to 82

9 A3 Tracking Sign Kit



Code	Size	Finish
CB-TK-9A3PT-T	1200mm W x 2m L	Acrylic Sign Holders, Silver Connectors & Tracking

Sign holders and cable components attach to tracking system and can be slid across to adjust positioning

Adjust to your own height along the cable

To suit ceilings up to 4m

In this kit:

- 9 x A3 portrait sign holders
- 12 x 1 way sign holder grips
- 12 x 2 way sign holder grips
- 4 x 4m cable wire
- 4 x top connectors
- 4 x bottom connectors
- 2 x tracking rails

Make your own kit, see all the components on pages 80 to 82

4 A3 Tracking Sign Kit



Code	Size	Finish
CB-TK-4A3LS-T	600mm W x 2m L	Acrylic Sign Holders, Silver Connectors & Tracking

Sign holders and cable components attach to tracking system and can be slid across to adjust positioning

Adjust to your own height along the cable

To suit ceilings up to 4m

In this kit:

- 4 x A3 landscape sign holders
- 16 x 1 way sign holder grips
- 4 x 4m cable wire
- 4 x top connectors
- 4 x bottom connectors
- 2 x tracking rails

Make your own kit, see all the components on pages 80 to 82

LIVEWIRE™ CABLE DISPLAY SYSTEM

8 A3 Tracking Sign Kit



Sign holders and cable components attach to tracking system and can be slid across to adjust positioning

Adjust to your own height along the cable

To suit ceilings up to 4m

In this kit:
 8 x A3 landscape sign holders
 32 x 1 way sign holder grips
 4 x 4m cable wire
 4 x top connectors
 4 x bottom connectors
 2 x tracking rails

Make your own kit, see all the components on pages 80 to 82

Code	Size	Finish
CB-TK-8A3LS-T	1200mm W x 2m L	Acrylic Sign Holders, Silver Connectors & Tracking

4 A2 Tracking Sign Kit



Sign holders and cable components attach to tracking system and can be slid across to adjust positioning

Adjust to your own height along the cable

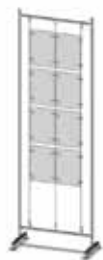
To suit ceilings up to 4m

In this kit:
 2 x A2 portrait sign holders
 16 x 1 way sign holder grips
 4 x 4m cable wire
 4 x top connectors
 4 x bottom connectors
 2 x tracking rails

Make your own kit, see all the components on pages 80 to 82

Code	Size	Finish
CB-TK-4A2PT-T	1200mm W x 2m L	Acrylic Sign Holders, Silver Connectors & Tracking

8 A4 Freestanding Sign Kit



A stylish, transportable cable display stand

2m H

Also available with castors - see page 65

In this kit:
 1 x frame with feet
 8 x A4 portrait sign holders
 16 x 1 way sign holder grips
 8 x 2 way sign holder grips
 3 x cable wire
 3 x top connectors
 3 x bottom connectors

Code	Size	Finish
CB-STK-8A4PT-T	600mm W x 2m H	Acrylic Sign Holders, Silver Frame & Components

12 A4 Freestanding Sign Kit



A stylish, transportable cable display stand

2m H

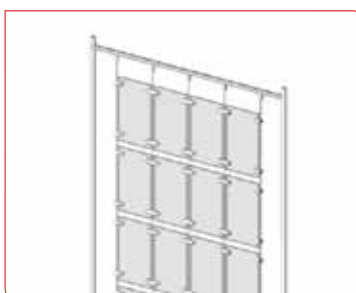
Also available with castors - see page 65

In this kit:

- 1 x frame with feet
- 12 x A4 portrait sign holders
- 16 x 1 way sign holder grips
- 16 x 2 way sign holder grips
- 4 x cable wire
- 4 x top connectors
- 4 x bottom connectors

Code	Size	Finish
CB-STK-12A4PT-T	900mm W x 2m H	Acrylic Sign Holders, Silver Frame & Components

16 A4 Freestanding Sign Kit



A stylish, transportable cable display stand

2m H

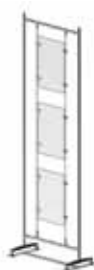
Also available with castors - see page 65

In this kit:

- 1 x frame with feet
- 16 x A4 portrait sign holders
- 16 x 1 way sign holder grips
- 24 x 2 way sign holder grips
- 5 x cable wire
- 5 x top connectors
- 5 x bottom connectors

Code	Size	Finish
CB-STK-16A4PT-T	1.2 W x 2m H	Acrylic Sign Holders, Silver Frame & Components

3 A3 Freestanding Sign Kit



A stylish, transportable cable display stand

2m H

Also available with castors - see page 65

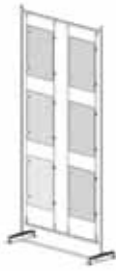
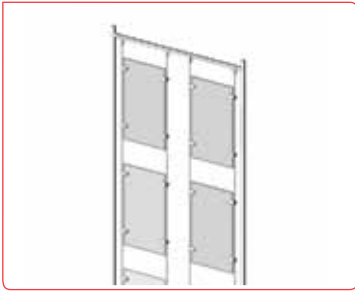
In this kit:

- 1 x frame with feet
- 3 x A3 portrait sign holders
- 12 x 1 way sign holder grips
- 2 x cable wire
- 2 x top connectors
- 2 x bottom connectors

Code	Size	Finish
CB-STK-3A3PT-T	600mm W x 2m H	Acrylic Sign Holders, Silver Frame & Components

LIVEWIRE™ CABLE DISPLAY SYSTEM

6 A3 Freestanding Sign Kit



A stylish, transportable cable display stand

2m H

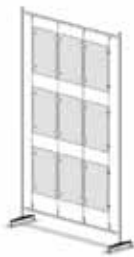
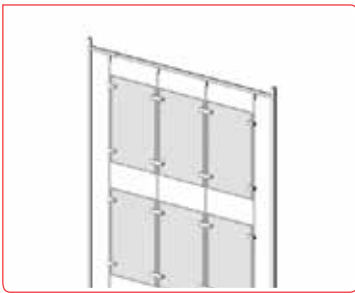
Also available with castors - see page 65

In this kit:

- 1 x frame with feet
- 6 x A3 portrait sign holders
- 12 x 1 way sign holder grips
- 4 x cable wire
- 4 x top connectors
- 4 x bottom connectors

Code	Size	Finish
CB-STK-6A3PT-T	900mm W x 2m H	Acrylic Sign Holders, Silver Frame & Components

9 A3 Freestanding Sign Kit



A stylish, transportable cable display stand

2m H

Also available with castors - see page 65

In this kit:

- 1 x frame with feet
- 9 x A3 portrait sign holders
- 12 x 1 way sign holder grips
- 12 x 2 way sign holder grips
- 4 x cable wire
- 4 x top connectors
- 4 x bottom connectors

Code	Size	Finish
CB-STK-9A3PT-T	1200mm W x 2m H	Acrylic Sign Holders, Silver Frame & Components

4 A3 Freestanding Sign Kit



A stylish, transportable cable display stand

2m H

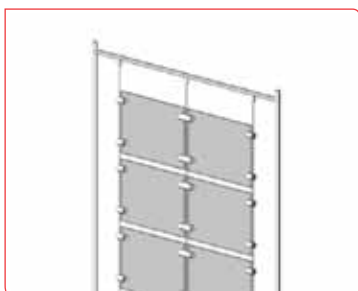
Also available with castors - see page 65

In this kit:

- 1 x frame with feet
- 4 x A3 landscape sign holders
- 16 x 1 way sign holder grips
- 2 x cable wire
- 2 x top connectors
- 2 x bottom connectors

Code	Size	Finish
CB-STK-3A3LS-T	600mm W x 2m H	Acrylic Sign Holders, Silver Frame & Components

8 A3 Freestanding Sign Kit



A stylish, transportable cable display stand

2m H

Also available with castors - see page 65

In this kit:

- 1 x frame with feet
- 8 x A3 landscape sign holders
- 16 x 1 way sign holder grips
- 8 x 2 way sign holder grips
- 3 x cable wire
- 3 x top connectors
- 3 x bottom connectors

Code	Size	Finish
CB-STK-8A3LS-T	1200mm W x 2m H	Acrylic Sign Holders, Silver Frame & Components

2 A2 Freestanding Sign Kit



A stylish, transportable cable display stand

2m H

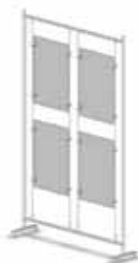
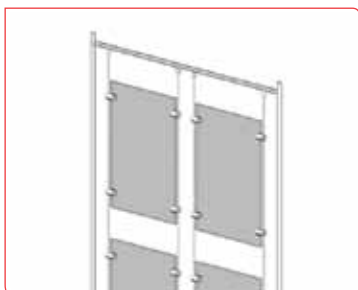
Also available with castors - see page 65

In this kit:

- 1 x frame with feet
- 2 x A2 portrait sign holders
- 8 x 1 way sign holder grips
- 2 x cable wire
- 2 x top connectors
- 2 x bottom connectors

Code	Size	Finish
CB-STK-2A2PT-T	600mm W x 2m H	Acrylic Sign Holders, Silver Frame & Components

4 A2 Freestanding Sign Kit



A stylish, transportable cable display stand

2m H

Also available with castors - see page 65

In this kit:

- 1 x frame with feet
- 4 x A2 portrait sign holders
- 16 x 1 way sign holder grips
- 4 x cable wire
- 4 x top connectors
- 4 x bottom connectors

Code	Size	Finish
CB-STK-4A2PT-T	1200mm H x 2m H	Acrylic Sign Holders, Silver Frame & Components

Hanging Signage



The cable hanging signage option is a stylish in-store solution that grips signage on the top edge

Available with 1 or 2m cable wire

These kits include:

1 x cable wire (1 or 2m)

1 x top grip sign holder

1 x ceiling connector

For acrylic signage to suit these kits - see page 82

You can also purchase these hanging kits for your own printed perspex panels

Code	Size	Finish
CB-SG1000-T	2m Cable, 15mm Diameter Connector	Silver
CB-SG2000-T	1m Cable, 15mm Diameter Connector	Silver

1 Way Sign Holder



Holds acrylic signage from the side on the Livewire™ cable display system

Holds up to 6.5mm signage

Code	Size	Finish
CB-SHG1	15 Diameter, 27mm L	Silver

2 Way Sign Holder



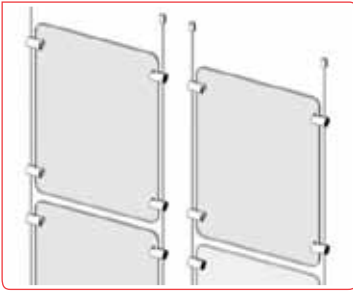
Holds acrylic signage in the middle of the Livewire™ cable display system

Holds up to 6.5mm signage

Utilises the one cable length to hold 2 sign holders side by side

Code	Size	Finish
CB-SHG2	15 Diameter, 39mm L	Silver

Sign Holders



Acrylic sign holders for Livewire™ give your displays an invisible effect

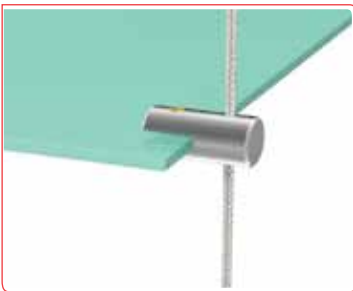
Perfect for real estate windows, travel agents and retail outlets

Choose the A1 and A2 acrylic sizes for poster promotion in-store

With finger grooves for easy signage replacement

Code	Size	Finish
CB-SHA1PT	594 W x 840mm H	Clear
CB-SHA2PT	420 W x 594mm H	Clear
CB-SHA3PT	297 W x 420mm H	Clear
CB-SHA3LS	420 W x 297mm H	Clear
CB-SHA4PT	210 W x 297mm H	Clear
CB-SHA4LS	297 W x 210mm H	Clear

1 Way Shelf Holder



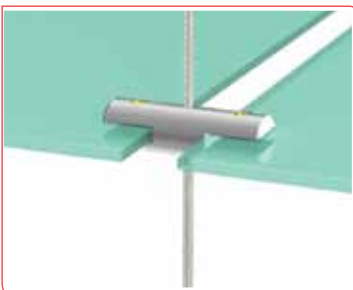
Holds suspended shelf on the Livewire™ cable display system on each edge

Holds shelves up to 5mm thick

Grips glass shelving for Livewire™ displays - see page 82

Code	Size	Finish
CB-SFG1	15 Diameter, 27mm L	Silver

2 Way Shelf Holder



Holds 2 suspended shelves back to back on the Livewire™ cable display system

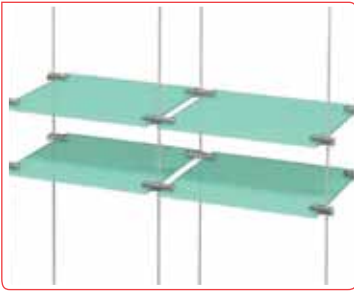
Creates a longer display and is economical by using less cable and components

Holds shelves up to 5mm thick

Grips glass shelving for Livewire™ displays - see page 82

Code	Size	Finish
CB-SFG2	15 Diameter, 39mm L	Silver

Glass Shelving

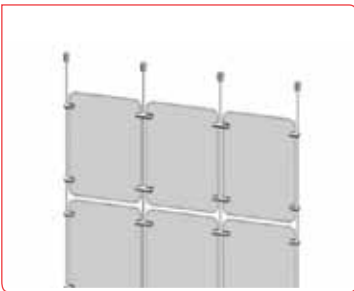


Toughened glass shelves are ideal for retailers looking for clean, professional displays that highlight merchandise

Glass shelves are available for Livewire™ displays in 330 and 450 mm L sizes

Code	Size	Finish
TF-G330T300CL5	330 L x 300 W x 5mm Thick	Clear
TF-G450T300CL5	450 L x 300 W x 5mm Thick	Clear

Ceiling and Floor Connectors



Create your own Livewire™ cable display with separate components

Purchase the CB-FTC4000-T code to get a 4m cable wire with top and bottom connectors

Code	Style	Finish
CB-FTC4000-T	Cable Wire Kit	Silver
CB-CF6-01	Top Connector	Silver
CB-CF6-02	Bottom Connector	Silver
CB-WIRE4000-SW	4m Wire (with crimps)	Silver

Tracking Rails



To extend your tracking kits or create one to suit an exact area, tracking rails are also sold separately

Purchase the tracking rail and adaptors to go with your top and bottom cable wire connectors

Livewire™ tracking is ideal for rental properties as the tracks are fixed to the roof and floor and your cable display system can be moved along the tracking without the need to re-drill new top and bottom connectors

Code	Style	Finish
CB-RAIL-2000	2m Tracking	Silver
CB-RAIL-ADP	Tracking adaptor	Brass

Single Sided Sign Holders



Single sided acrylic sign holders are an economical way to display your promotions

Ideal for counters and glass displays

Available in A3, A4, A5, A6 and A7

Use with pre-printed tickets for easy promotions - see pages 102 to 105

Code	Size	Style & Finish
SH-ASS-MA3__	297 x 420mm	A3 Portrait or Landscape, Clear
SH-ASS-LA4__	210 x 297mm	A4 Portrait or Landscape, Clear
SH-ASS-LA5__	148.5 x 210mm	A5 Portrait or Landscape, Clear
SH-ASS-LA6PT	105 W x 148.5mm H	A6 Portrait, Clear
SH-ASS-LA7PT	74.25 W x 105mm H	A7 Portrait, Clear

* __ insert PT and LS for portrait and landscape styles respectively

Double Sided Sign Holders



Double sided acrylic sign holders are an economical way to display your promotions

Ideal for counters and glass displays where the sign holder can be seen from both sides

Available in A3, A4, A5, A6 and A7

Use with pre-printed tickets for easy promotions - see pages 102 to 105

Code	Size	Finish
SH-ADS-MA3	297 x 420mm	A3 Portrait or Landscape, Clear
SH-ADS-LA4	210 x 297mm	A4 Portrait or Landscape, Clear
SH-ADS-LA5	148.5 x 210mm	A5 Portrait or Landscape, Clear
SH-ADS-LA6PT	105 W x 148.5mm H	A6 Portrait, Clear
SH-ADS-LA7PT	74.25 W x 105mm H	A7 Portrait, Clear

* __ insert PT and LS for portrait and landscape styles respectively

Wall Mount Acrylics



Wall mounted acrylics are a stylish signage option in-store, giving a clean, crisp appearance for your promotions

Available in A1, A2, A3 and A4 with wall mount standoffs to suit

These kits include 2 sheets of acrylic and 25mm wall mount standoffs

We can also provide quotes for customised sizes of acrylics for your store - just give us a call

Code	Size	Style & Finish
WM-AA1-T	654 W x 900mm H	A1 Kit (acrylics and standoffs) Suits Artwork 594 x 840mm
WM-AA2-T	480 W x 654mm H	A2 Kit (acrylics and standoffs) Suits Artwork 420 x 594mm
WM-AA3-T	357 W x 480mm H	A3 Kit (acrylics and standoffs) Suits Artwork 297 x 420mm
WM-AA4-T	270 W x 360mm H	A4 Kit (acrylics and standoffs) Suits Artwork 210 x 297mm

WALL MOUNTS & BROCHURE HOLDERS

NEW

Wall Mount Standoffs



Wall mount standoffs are available in aluminium and brass

Choose from either satin chrome as the standard finish or pick a colour from our range to suit your corporate branding or promotion

New colours include gold, black and orange

New 13mm diameter size now available for your own acrylics

For other colours and sizes, please contact us

Code	Size	Style & Finish
WM-19L25SI	19 Diameter, 25mm L	Aluminium, Satin Chrome
WM-19SC25	19 Diameter, 25mm L	Brass, Satin Chrome
WM-19L25__	19 Diameter, 25mm L	Aluminium, Black, Orange, Red, Green, Blue and Gold
WM-13L25SI	13mm Diameter, 25mm L	Aluminium, Satin Chrome

* __ insert BK, OR, RD, GR, BL, GD for black, orange, red, green, blue and gold colours respectively

NEW

A4 Brochure Holders 1 & 2 Tier



NEW and affordable A4 brochure holder range

Stylish design

Suits portrait A4 materials - 210 W x 297mm H

A4 styles available in 1, 2, 3 and 4 levels of display

Also available in 1 and 2 levels in A4 landscape - see page 85

Code	Size	Style & Finish
CD-A4-1	40 L x 60 D x 280mm H	1 Level Portrait, Clear
CD-A4-2	235 L x 90 D x 270mm H	2 Levels Portrait, Clear

NEW

A4 Brochure Holders 3 & 4 Tier



NEW and affordable A4 brochure holder range

Stylish design

Suits portrait A4 materials - 210 W x 297mm H

A4 styles available in 1, 2, 3 and 4 levels of display

Also available in 1 and 2 levels in A4 landscape - see page 85

Code	Size	Style & Finish
CD-A4-3	235 L x 140 D x 330mm H	3 Levels Portrait, Clear
CD-A4-4	235 L x 170 D x 345mm H	4 Levels Portrait, Clear

NEW

A4 Brochure Holders Landscape



NEW and affordable A4 brochure holder range

Stylish design

Suits landscape A4 materials - 297 W x 210mm H

Available in 2 and 4 levels of display

Also available in 1, 2, 3 and 4 levels in A4 portrait - see page 84

Code	Size	Style & Finish
CD-A4LS-2	330 L x 80 D x 260mm H	2 Levels Landscape, Clear
CD-A4LS-4	330 L x 150 D x 340mm H	4 Levels Landscape, Clear

NEW

A5 Brochure Holders



NEW and affordable A5 brochure holder range

Stylish design

Suits portrait A5 materials - 148.5 W x 210mm H

Available in 1, 2 and 4 levels of display

Code	Size	Style & Finish
CD-A5-1	175 L x 55 D x 210mm H	1 Level Portrait, Clear
CD-A5-2	175 L x 90 D x 200mm H	2 Levels Portrait, Clear
CD-A5-4	175 L x 150 D x 260mm H	4 Levels Portrait, Clear

NEW

DL Brochure Holders



NEW and affordable DL brochure holder range

Stylish design

Suits portrait DL materials - 99 W x 210mm H

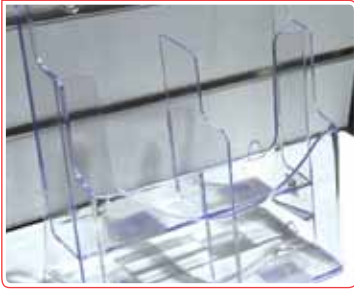
Available in 1, 2 and 4 levels of display

Code	Size	Finish
CD-DL-1	115 L x 50 D x 210mm H	1 Level Portrait, Clear
CD-DL-2	115 L x 90 D x 210mm H	2 Levels Portrait, Clear
CD-DL-4	115 W x 150 D x 260mm H	4 Levels Portrait, Clear

BROCHURE HOLDERS

NEW

Brochure Holder Dividers



Dividers for the NEW brochure holder range are available for A4 configurations

Separate your portrait A4 brochure holders with dividers to create DL pockets

Also available to separate the A4 landscape brochure holder range

Code	Size	Style & Finish
CD-DIV-A4-1	50 W x 140mm L	A4 Portrait, 1 Level, Clear
CD-DIV-A4-2	80 W x 210mm L	A4 Portrait, 2 Level, Clear
CD-DIV-A4-3	130 W x 280mm L	A4 Portrait, 3 Level, Clear
CD-DIV-A4-4	160 W x 340mm L	A4 Portrait, 4 Level, Clear
CD-DIV-A4LS	33 W x 100mm L	A4 Landscape, Clear

A4 Brochure Holders Peg & Slotwall



These single A4 brochure holders are ideal for use on pegboard and slotwall panels

Use the wall adaptor to add to pegboard or slotwall displays to hold your catalogues and brochures

Peg and slotwall brochure holders are available in A4, A5 and DL sizes

Also attach the business card holders with clips - see page 87

Code	Size	Style & Finish
CD-EA4A	210 W x 297 H x 30mm D	A4 Without Clips, Clear
WDA-BPW	78mm L	Wall Adaptor, Zinc
CDA-BWA	79 W x 100mm L	Counter Base Bracket, Clear

A5 Brochure Holders Peg & Slotwall



These single A5 brochure holders are ideal for use on pegboard and slotwall panels

Use the wall adaptor to add to pegboard or slotwall displays to hold your catalogues and brochures

Peg and slotwall brochure holders are available in A4, A5 and DL sizes

Also attach the business card holders with clips - see page 87

Code	Size	Style & Finish
CD-EA5A	148.5 W x 210 H x 30mm D	A5 Without Clips, Clear
WDA-BPW	78mm L	Wall Adaptor, Zinc
CDA-BWA	79 W x 100mm L	Counter Base Bracket, Clear

DL Brochure Holders Peg & Slotwall



These single DL brochure holders are ideal for use on pegboard and slotwall panels

Use the wall adaptor to add to pegboard or slotwall displays to hold your catalogues and brochures

Peg and slotwall brochure holders are available in A4, A5 and DL sizes

Also attach the business card holders with clips - see below

Code	Size	Style & Finish
CD-EDLA	99 W x 210 H x 30mm D	Without Clips, Clear
WDA-BPW	78mm L	Wall Adaptor, Zinc
CDA-BWA	79 W x 100mm L	Counter Base Bracket, Clear

Business Card Holders for Brochures



These business card holders attach directly onto your brochure holders for added impact

Make sure you always have your contact details available when promoting your catalogues or flyers

Available in horizontal and vertical styles

Code	Size	Style & Finish
CD-BC-HAC	90 H x 58 L x 25mm D	Horizontal with Clips, Clear
CD-BC-VAC	60 H x 90 L x 25mm D	Vertical with Clips, Clear

NEW

Business Card Holders Counter



The NEW and affordable range of business card holders

Stylish design

This range also caters to multiple levels of cards - perfect for reception desks

Available in single counter use, 2 and 3 levels of display, as well as a 6 pocket display

Code	Size	Style & Finish
CD-BCH-1	110 L x 46 D x 57mm H	1 Level, Clear
CD-BCH-2	106 L x 64 D x 68mm H	2 Level, Clear
CD-BCH-3	106 L x 97 D x 67mm H	3 Level, Clear
CD-BCH-6	210 L x 100 D x 70mm H	2 x 3 Level, Clear

MENU HOLDERS

3 Way Menu Holder



Perfect for tables at restaurants and cafes to display your food and drink menus

Suits DL size material

3 sided acrylic

Code	Size	Finish
CD-3WTTD-MDL	99 W x 210mm H	3 Sides for 3 x DL Signage

6 Way Menu Holder



Perfect for tables at restaurants and cafes to display your food and drink menus

Suits DL size material

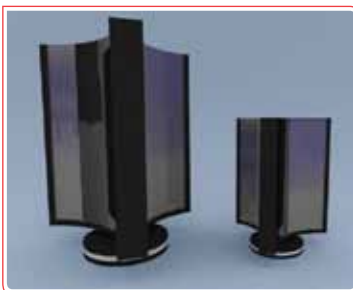
3 sided acrylic

Holds 6 DL size promotions

Code	Size	Finish
CD-6WTTD-MDL	99 W x 210mm H	3 Sides for 6 x DL Signage

NEW

Rotating Menu Stands



The NEW rotating menu stand is an affordable display solution

Perfect for clubs, pubs, restaurants and cafes

The rotating menu stand is available to suit A6 and A7 signage

Rotates on table or counter for 360 degree view of specials

Code	Size	Finish
CD-RMS-A6	95 L x 130mm H	Clear with Black Frame and Base
CD-RMS-A7	130 L x 170mm H	Clear with Black Frame and Base

Wall Brochure Holders



Choose from a wide range of wall brochure holders for your store

Available in A4, DL and postcard sizes

Create a cascade of flyers on your wall with these pre-created brochure holder kits

Perfect for hotels, travel agents, newsagents and real estate

Code	Size	Style & Finish
WD-EA8A4	750 H x 460mm L	8 x A4 Portrait, Clear
WD-EA16A4	750 H x 920mm L	16 x A4 Portrait, Clear
WD-EA16DL	550 H x 460mm L	16 x DL Portrait, Clear
WD-EA8DL4A4	680 H x 460mm L	8 x DL, 4 x A4 Portrait, Clear
WD-EA16DL8A4	680 H x 920mm L	16 x DL, 8 x A4 Portrait, Clear
WD-EA32DL	550 H x 920mm L	32 x DL Portrait, Clear

Foyer Brochure Stands



Display multiple brochures throughout your store with foyer display stands

Available in A4 and DL sizes

Perfect for hotels, travel agents, newsagents and real estate

Code	Size	Style & Finish
FD-EFA6A4	230 W x 1700mm H	6 x A4 Portrait, Clear
FD-EFA12A4	455 W x 1700mm H	12 x A4 Portrait, Clear
FD-EFA16DL	235 W x 1700mm H	16 x DL Portrait, Clear

Carousel Brochure Stands



The carousel brochure stand is perfect for displaying your promotions and flyers from all angles

Available in A4, DL and postcard sizes

Each one of the 3 tiers rotates

Top connector can also be used as a sign holder

Code	Size	Finish
WD-ECA18A4	550 W x 1760mm H	18 x A4 Portrait, Clear
WD-ECA48DL	550 W x 1760mm H	48 x DL Portrait, Clear
WD-ECA72DL	550 W x 1760mm H	72 x DL Portrait, Clear
WD-ECA54PC	550 W x 1760mm H	54 x Postcard, Clear

CATALOGUE STANDS & MULTI RACK

Wire Catalogue Stand



An economical catalogue stand for store entrances

Available in black or white

Holds A4 size material

Available with either A4 portrait or A5 landscape acrylic sign holder

Solid design

Code	Size	Finish
FD-CATST-WBK-T	355 Diameter Base, 1160mm H	Black
FD-CATST-WWT-T	355 Diameter Base, 1160mm H	White

Acrylic Catalogue Stand



A stylish catalogue stand for store entrances

Available with chrome pole and base or black pole and base

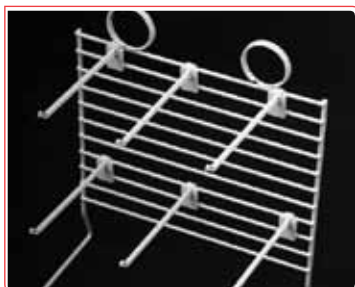
Acrylic basket and A4 portrait sign holder

Holds A4 size material

Solid design

Code	Size	Finish
FD-CATST900R-T	295 Diameter Base, 1360mm H	Chrome
FD-CATST900R-BK-T	295 Diameter Base, 1360mm H	Black

Multi Rack Counter Stand



Wire counter display stands are ideal for smaller merchandise

Available in black or white

Comes with set of 6 hooks that can be positioned anywhere on the wire to suit product packaging

With rings to hold signage or pre-printed tickets - see pages 102 to 105

Code	Size	Finish
ST-MRW270WT280-T	270 W x 280mm H	White
ST-MRW270BK280-T	270 W x 280mm H	Black

Snap Frames Square



Snap frames are an economical way to professionally display your promotions in-store

Artwork can easily be changed once fixed to your wall by simply snapping open the frame edges

With clear perspex to protect your artwork

Anodised aluminium frame

Square edge

Available in theatrical, A0, A1, A2, A3 and A4 sizes

Use with pre-printed tickets - see pages 102 to 105

Code	Printed Area	Style & Finish
PF-SL25L1000M700	700 W x 1000mm H	Theatrical Size, Square Edge, Silver
PF-SL25LA0-MDC	840 W x 1188mm H	A0, Square Edge, Silver
PF-SL25LA1-MDC	594 W x 840mm H	A1, Square Edge, Silver
PF-SL25LA2-MDC	420 W x 594mm H	A2, Square Edge, Silver
PF-SL25LA3-MDC	297 W x 420mm H	A3, Square Edge, Silver
PF-SL25LA4-MDC	210 W x 297mm H	A4, Square Edge, Silver

Snap Frames Round



Snap frames are an economical way to professionally display your promotions in-store

Artwork can easily be changed once fixed to your wall by simply snapping open the frame edges

With clear perspex to protect your artwork

Anodised aluminium frame

Round edge

Available in A0, A1, A2, A3 and A4 sizes

Use with pre-printed tickets - see pages 102 to 105

Code	Printed Area	Style & Finish
PF-SL32LA0	840 W x 1188mm H	A0, Round Edge, Silver
PF-SL32LA1	594 W x 840mm H	A1, Round Edge, Silver
PF-SL32LA2	420 W x 594mm H	A2, Round Edge, Silver
PF-SL32LA3	297 W x 420mm H	A3, Round Edge, Silver
PF-SL32LA4	210 W x 297mm H	A4, Round Edge, Silver

A Frame



The snap A-frame impacts on your passing foot traffic

Ideal for storefronts and walkways

Artwork can easily be changed by simply snapping open the frame edges

Double sided

With clear perspex to protect your artwork

Anodised aluminium frame

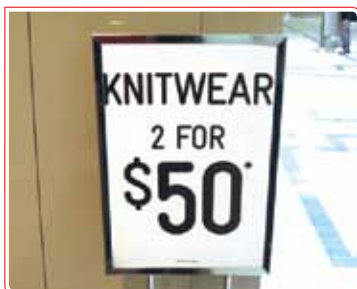
Suits A1 artwork

Use with pre-printed tickets - see pages 102 to 105

Code	Size	Style & Finish
PF-SLLPB204	594 W x 1108mm H	A1, Round Edge, Silver

BULLETIN SIGN HOLDERS & TICKET FRAMES

Bulletin Sign Holder



The bulletin sign holder is ideal for making an impact on your customers at store entry points

Available in A1 or A2 sizes with clear perspex sheets to protect your artwork

Add your brochures or catalogues with the basket accessory options

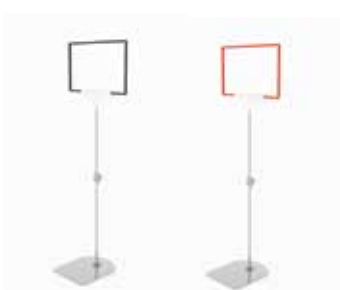
Chrome

Use with pre-printed tickets - see pages 102 to 105

Code	Size	Style & Finish
PS-150CA1	1500mm H	Suits 594 x 840mm H Signage, Silver
PS-150CA2	1250mm H	Suits 420 x 594mm H Signage, Silver
SD-BH-BASKETA4C	210 W x 297mm H	Horizontal Basket for A4
SH-BH-A4PT	210 W x 297mm H	Vertical Basket for A4

NEW

Giant Ticket Frames



The NEW giant ticket frames are a stylish and practical option to display promotional messages in-store

Perfect for warehouse stores or retailers with high product displays

Stem extends from 1000 to 1950mm H

Available with A3 and A4 frames

Sturdy design

Use with pre-printed tickets - see pages 102 to 105

Code	Size	Style & Finish
TF-TELEGR-A3BK-T	1000-1950mm H	A3 Black Frame with Grey Stem and Base
TF-TELEGR-A3RD-T	1000-1950mm H	A3 Red Frame with Grey Stem and Base
TF-TELEGR-A3BL-T	1000-1950mm H	A3 Blue Frame with Grey Stem and Base
TF-TELEGR-A4BK-T	1000-1950mm H	A4 Black Frame with Grey Stem and Base
TF-TELEGR-A4RD-T	1000-1950mm H	A4 Red Frame with Grey Stem and Base
TF-TELEGR-A4BL-T	1000-1950mm H	A4 Blue Frame with Grey Stem and Base

Telescopic Ticket Frames



Telescopic ticket frames are available in 2 styles

Economical floor signage options

Choose either the silver stem telescopic option or grey stem telescopic option

Available with A3, A4 and A5 frames

Use with pre-printed tickets - see pages 102 to 105

Code	Size	Style & Finish
TF-A3__TELE-C-T	200-600mm H	A3, Red, Black or Blue Frame and Base with Silver Stem
TF-A4__TELE-C-T	200-600mm H	A4, Red, Black or Blue Frame and Base with Silver Stem
TF-A5__TELE-C-T	200-600mm H	A5, Red or Blue Frame and Base with Silver Stem
TF-A3__TELEGR-T	300-500mm H	A3, Red, Black or Blue Frame with Grey Base and Stem
TF-A4__TELEGR-T	300-500mm H	A4, Red, Black or Blue Frame with Grey Base and Stem
TF-A5__TELEGR-T	300-500mm H	A5, Red or Blue Frame with Grey Base and Stem

* __ insert RD, BK or BL for red, black and blue frames respectively

Fixed Ticket Frames



Fixed ticket frames are available in 2 styles

Economical floor signage options that create a uniformed display

Available with 150 or 300mm fixed stems

Available with A3, A4 and A5 frames

Use with pre-printed tickets - see pages 102 to 105

Code	Size	Style & Finish
TF-A3__-150-T	150mm H	A3, Red, Black or Blue Frame and Base with Silver Stem
TF-A3__-300-T	300mm H	A3, Red, Black or Blue Frame and Base with Silver Stem
TF-A4__-150-T	150mm H	A4, Red, Black or Blue Frame and Base with Silver Stem
TF-A4__-300-T	300mm H	A4, Red, Black or Blue Frame and Base with Silver Stem
TF-A5__-150-T	150mm H	A5, Red or Blue Frame and Base with Silver Stem
TF-A5__-300-T	300mm H	A5, Red or Blue Frame and Base with Silver Stem

* __ insert RD, BK or BL for red, black and blue frames respectively

Magnetic Ticket Frames



The magnetic ticket frame attaches to any metal surface and can show your ticket frame at many angles

Perfect for stores with metal shelving, racking or gondolas

Choose from 50, 150 and 300mm stems

Available in black and red

Available with A3, A4 and A5 frames

Use with pre-printed tickets - see pages 102 to 105

Code	Size	Style & Finish
TF-A3BK-MAGHG-__-T	50 H x 44 W Base	A3, Black with 50, 150 or 300mm Stem
TF-A3RD-MAGHG-__-T	50 H x 44 W Base	A3, Red with 50, 150 or 300mm Stem
TF-A4BK-MAGHG-__-T	50 H x 44 W Base	A4, Black with 50, 150 or 300mm Stem
TF-A4RD-MAGHG-__-T	50 H x 44 W Base	A4, Red with 50, 150 or 300mm Stem
TF-A5RD-MAGHG-__-T	50 H x 44 W Base	A5, Red with 50, 150 or 300mm Stem

* __ insert 50, 150 and 300 for 50, 150 and 300mm long stems respectively

Hanging Ticket Frames



Hanging ticket frames are ideal for displaying product information from cords, wire and baskets

Choose red, black or blue frames with 2 clear clips

Available with A3, A4 and A5 frames

Use with pre-printed tickets - see pages 102 to 105

Code	Size	Style & Finish
TF-A3__-HANG-T	210 x 297mm	A3, Black, Blue or Red with Clear Clips
TF-A4__-HANG-T	297 x 420mm	A4, Black, Blue or Red with Clear Clips
TF-A5__-HANG-T	148.5 x 210mm	A5, Blue or Red with Clear Clips

* __ insert RD, BK or BL for red, black and blue frames respectively

TICKET FRAMES

Counter Ticket Frames



Counter ticket frames are a simple and effective signage option for counter and table use

Choose red, black or blue frames with 2 clear feet clips

Available with A3, A4 and A5 frames

Use with pre-printed tickets - see pages 102 to 105

Code	Size	Style & Finish
TF-A3__FEET-T	210 x 297mm	A3, Black, Blue or Red with Clear Clips
TF-A4__FEET-T	297 x 420mm	A4, Black, Blue or Red with Clear Clips
TF-A5__FEET-T	148.5 x 210mm	A5, Blue or Red with Clear Clips

* __ insert RD, BK or BL for red, black and blue frames respectively

NEW

Ticket Frames



Create your own signage display with ticket frames or customise a kit to suit your needs

NEW A5 now available in blue and red

Also available in A3 and A4 in black, blue or red

Use with pre-printed tickets - see pages 102 to 105

Code	Size	Style & Finish
TF-A3__	297 x 420mm	A3, Black, Blue or Red Frame
TF-A4__	210 x 297mm	A4, Black, Blue and Red Frame
TF-A5__	148.5 x 210mm	A5, Blue and Red Frame

* __ insert RD, BK or BL for red, black and blue frames respectively

NEW

Ticket Frame Perspex



Now you can protect your artwork in the ticket frame range with clear perspex sheets

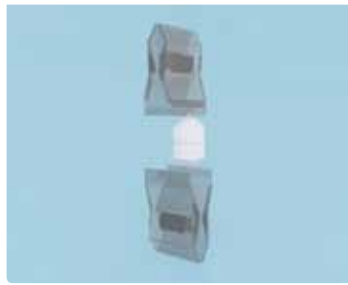
Sold as a set of 2

Create a sturdier ticket frame display by including 2 sheets of clear perspex with your printed signage

Available for A3, A4 and A5 ticket frames

Code	Size	Style Finish
TFA-415PVC295CL1	297 x 420mm	A3, Clear Perspex, 2 Sheets
TFA-295PVC205CL1	210 x 297mm	A4, Clear Perspex, 2 Sheets
TFA-205PVC145CL1	148.5 x 210mm	A5, Clear Perspex, 2 Sheets

Easy Clip Double Spring



Code	Size	Finish
SH-SW0001	19 W x 59mm H	Clear

Easy clips are great signage solutions to put almost anywhere

The double spring clip has 2 grips - one for placement and the other for signage

This clip can hold 9.5mm thick signage

Ball sockets enable the clip to swivel around to desired position

Ideal with A6 and A7 signage

Use with pre-printed tickets - see pages 102 to 105

Easy Clip Single Spring



Code	Size	Finish
SH-SW0002	25 W x 73mm H	Clear

Easy clips are great signage solutions to put almost anywhere

The single spring clip has 1 grip and 1 sign holder clip

This clip can hold 0.5mm thick signage

Ball sockets enable the clip to swivel around to desired position

Ideal with A6 and A7 signage

Use with pre-printed tickets - see pages 102 to 105

Easy Clip Extended Stem



Code	Size	Finish
SH-SW0003	25 W x 178mm H	Clear

Easy clips are great signage solutions to put almost anywhere

The single spring clip has 1 grip and 1 sign holder clip on a long stem

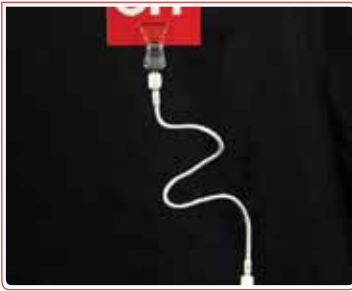
This clip can hold 0.5mm thick signage

Ball sockets enable the clip to swivel around to desired position

Ideal with A6 and A7 signage

Use with pre-printed tickets - see pages 102 to 105

Easy Clip Bendable



Easy clips are great signage solutions to put almost anywhere

This spring clip has 2 grips - one for placement and the other for signage on a bendable stem in white or black

This clip can hold 9.5mm thick signage

Ball sockets enable the clip to swivel around to desired position

Ideal with A6 and A7 signage

Use with pre-printed tickets - see pages 102 to 105

Code	Size	Finish
SH-SW0004W	19 W x 311mm H	Clear with White Stem
SH-SW0004K	19 W x 311mm H	Clear with Black Stem

Easy Clip Round Clip



Especially designed to suit the mobile garment racks - see page 62

This spring clip has 2 grips - one for placement and the other for signage on a short or long stem

Clamps easily onto any 25mm tube

These clips can hold 6mm thick signage

Ball sockets enable the clip to swivel around to desired position

Use with pre-printed tickets - see pages 102 to 105

Code	Size	Finish
SH-SW0007	75 W x 80mm H	Clear
SH-SW0008	75 W x 159mm H	Clear

Easy Clip Adhesive



Easy clips are great signage solutions to put almost anywhere

The adhesive easy clips come in 2 styles - one with spring clip and small adhesive pad and the other with flat sign clip and large adhesive pad

SH-SW0009 can hold 9.5mm thick signage

SH-SW0011 can hold 0.5mm thick signage

Ball sockets enable the clip to swivel around to desired position

Ideal with A6 and A7 signage

Use with pre-printed tickets - see pages 102 to 105

Code	Size	Finish
SH-SW0009	60mm H x 19mm W	Clear
SH-SW0011	32mm H x 41mm W	Clear

Fast Grip Slide Clip



Fast grips are quick and easy signage solutions that adhere to almost any surface

Designed to hold posters against a flat surface

Adhesive base pad

Available in 25 and 75mm L

Use with pre-printed tickets - see pages 102 to 105

Code	Size	Finish
SH-SGH25A	25 L, Holds 3.8mm Thick	Clear
SH-SGH75A	75 L, Holds 3.8mm Thick	Clear

Fast Grip Wide



Fast grips are quick and easy signage solutions that adhere to almost any surface

Designed to suit a freestanding sign

Wide base for extra stability

Adhesive base pad

Available in 25 and 75mm L

Use with pre-printed tickets - see pages 102 to 105

Code	Size	Finish
SH-STGV25	25 W x 25 L, Holds 3.8mm Thick	Clear
SH-STGV75	25 W x 75 L, Holds 3.8mm Thick	Clear

Fast Grip Thin



Fast grips are quick and easy signage solutions that adhere to almost any surface

Designed to suit a freestanding sign

Thin base to fit almost anywhere

Adhesive base pad

Available in 25 and 75mm L

Use with pre-printed tickets - see pages 102 to 105

Code	Size	Finish
SH-TGV25	13 W x 25 L, Holds 3.8mm Thick	Clear
SH-TGV75	13 W x 75 L, Holds 3.8mm Thick	Clear

POSTER GRIPS & QUAD RAMA

Poster Grips Aluminium



A stylish poster grip option that snaps open and shut to grip your poster

Ideal for high ceilings to utilise empty space and easily highlight sections for customers

Set of 2 aluminium grips with eyelets

Available in 610, 850 and 1220mm L

For hanging wires and ceiling clips - see pages 99 to 100

Code	Size	Style & Finish
HD-PHLHR-610	610mm L	Suits A1 PT and A2 LS Artwork, Silver
HD-PHLHR-850	850mm L	Suits A0 PT and A1 LS Artwork, Silver
HD-PHLHR-1220	1220mm L	Suits A0 LS Artwork, Silver

Poster Grips Plastic



An economical poster grip that snaps open and shut to grip your poster

Ideal for high ceilings to utilise empty space and easily highlight sections for customers

Set of 2 plastic poster grips with eyelets

Available in clear or black

Available in 610, 850 and 1220mm L

For hanging wires and ceiling clips - see pages 99 to 100

Code	Size	Style & Finish
HD-PHPF-610CL	610mm L	Suits A1 PT and A2 LS Artwork, Clear
HD-PHPF-610BK	610mm L	Suits A1 PT and A2 LS Artwork, Black
HD-PHPF-850CL	850mm L	Suits A0 PT and A1 LS Artwork, Clear
HD-PHPF-850BK	850mm L	Suits A0 PT and A1 LS Artwork, Black
HD-PHPF-1220CL	1220mm L	Suits A0 LS Artwork, Clear
HD-PHPF-1220BK	1220mm L	Suits A0 LS Artwork, Black

Quad Rama



An economical and visually impacting hanging signage solution

4 sided hanging display

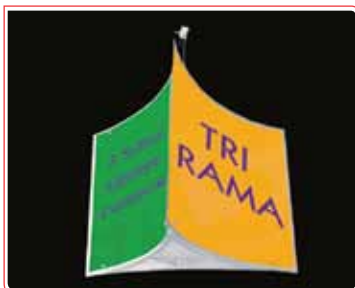
Add your own signage - laminated works best to clip into the frame

Low cost solution that includes ceiling accessories

Easy to assemble

Code	Size	Finish
HD-QDA3	250mm L Each Side	Suits 297 W x Any mm H

Tri Rama



An economical and visually impacting hanging signage solution

3 sided hanging display

Available in 2 sizes

Add your own signage - laminated works best to clip into the frame

Low cost solution that includes ceiling accessories

Easy to assemble

Code	Size	Finish
HD-TRA3	168mm L Each Side	Suits 297 W x Any mm H
HD-TRA4	306mm L Each Side	Suits 420 W x Any mm H

Fixed Ceiling Grip



An affordable ceiling clip accessory to hang posters anywhere

Adhesive pad can be attached to almost any surface

Add fixed length or extending hangers to display your poster grips - see page 100

Code	Size	Finish
HDA-AFIX	20 x 20mm	White

Suspended Wire Ceiling Hanger



An affordable ceiling clip accessory to hang posters from suspended ceilings

The wire ceiling hanger clips around the suspended ceiling strips and can easily be moved without roof damage

Add fixed length or extending hangers to display your poster grips - see page 100

Code	Size	Finish
HDA-WSC	75mm H	Zinc

HANGING ACCESSORIES

Suspended Plastic Ceiling Hanger



An affordable ceiling clip accessory to hang posters from suspended ceilings

The plastic ceiling hanger clips around the suspended ceiling strips and can easily be moved without roof damage

Almost invisible with white ceilings

Add fixed length or extending hangers to display your poster grips - see below

Code	Size	Finish
HDA-PSC	22mm H	White

Fixed Length Hangers



Fixed hangers are an economical hanging solution for your signage

Display your posters at the desired eye level with the various lengths available

Available in 100, 200, 300, 400 and 800mm L

Clip one fixed hanger onto another for higher ceilings

Attaches directly to poster grips - see page 98

Code	Size	Finish
HDA-CHK100	100mm L	Galvanised
HDA-CHK200	200mm L	Galvanised
HDA-CHK300	300mm L	Galvanised
HDA-CHK400	400mm L	Galvanised
HDA-CHK800	800mm L	Galvanised

Extending Hangers



Extending hangers are an easy hanging solution for your signage

The spring stem can be pulled to your desired length

Extends to 1500mm L

Once fully extended they do not retract

Attaches directly to poster grips - see page 98

Code	Size	Finish
HDA-EHK1500	Extends to 1500mm L	Zinc

Suction Cup with Pin



Perfect for store windows to hold your posters, the suction cup with pin is an affordable and stylish solution

Just punch a hole in your poster, hold over the suction cup and use the tack to cover the hole for a flush finish

Available with 42mm suction cup

Use with pre-printed tickets - see pages 102 to 105

Code	Size	Style & Finish
SC-T42	42mm Cup, 19mm Pin	Clear with White Pin

Suction Cup with Hook



Perfect for store windows to hold your posters, the suction cup with pin is an affordable and stylish solution

Just punch a hole in your poster and hang over the hook on the suction cup

Available with 26, 42 and 62mm suction cups

Use with pre-printed tickets - see pages 102 to 105

Code	Size	Style & Finish
SC-H26	26mm Cup	Clear with Wire Hook
SC-H42	42mm Cup	Clear with Wire Hook
SC-H62	62mm Cup	Clear with Wire Hook

Suction Cup with Grip



Perfect for store windows to hold your posters, the suction cup with pin is an affordable solution for smaller promotions

Just attach your promotional ticket to the grip

The horizontal grip is designed to create perpendicular signage while the vertical grip holds posters against a flat surface

25mm

Use with pre-printed tickets - see pages 102 to 105

Code	Size	Style & Finish
SC-GH	25mm	Clear with Horizontal Grip
SC-GV	25mm	Clear with Vertical Grip

PRE-PRINTED TICKETS

A1 & A2 Poster Tickets



Poster pre-printed tickets are an easy, eye catching solution for in-store sales

A1 and A2 poster size pre-printed tickets available in 'sale'

Pack of 10 tickets

Add to snap frames (page 91), bulletin sign holders (page 92) and poster grips (page 98)

Code	Size	Style
TI-A1PT-SALE	594 W x 840mm H	Sale, A1 Portrait
TI-A2PT-SALE	420 W x 594mm H	Sale, A2 Portrait

A3 Tickets - % Off



A3 pre-printed tickets are an easy, eye catching solution for in-store sales

A3 '% off' pre-printed tickets are available in 10, 15, 20, 25, 30 and 50 off styles

Available in portrait and landscape

Pack of 10 tickets

Add to snap frames (page 91), ticket frames (pages 92-94) and acrylic signage (page 83)

Code	Size	Style
TI-A3__-10	297 x 420mm	A3 Portrait or Landscape, 10% Off
TI-A3__-15	297 x 420mm	A3 Portrait or Landscape, 15% Off
TI-A3__-20	297 x 420mm	A3 Portrait or Landscape, 20% Off
TI-A3__-25	297 x 420mm	A3 Portrait or Landscape, 25% Off
TI-A3__-30	297 x 420mm	A3 Portrait or Landscape, 30% Off
TI-A3__-50	297 x 420mm	A3 Portrait or Landscape, 50% Off

* __ insert PT or LS for portrait and landscape respectively

A3 Tickets - Under \$



A3 pre-printed tickets are an easy, eye catching solution for in-store sales

A3 'under \$' pre-printed tickets are available in 10, 15 and 20 styles

Available in portrait and landscape

Pack of 10 tickets

Add to snap frames (page 91), ticket frames (pages 92-94) and acrylic signage (page 83)

Code	Size	Style
TI-A3__-U10	297 x 420mm	A3 Portrait or Landscape, Under 10
TI-A3__-U15	297 x 420mm	A3 Portrait or Landscape, Under 15
TI-A3__-U20	297 x 420mm	A3 Portrait or Landscape, Under 20

* __ insert PT or LS for portrait and landscape respectively

A3 Tickets - Specialty



Code	Size	Style
TI-A3__MIX	297 x 420mm	A3 Portrait or Landscape, Mix
TI-A3__NEW	297 x 420mm	A3 Portrait or Landscape, New
TI-A3__SALE	297 x 420mm	A3 Portrait or Landscape, Sale
TI-A3__SALENOW	297 x 420mm	A3 Portrait or Landscape, Sale Now On
TI-A3__SPEC-L	297 x 420mm	A3 Portrait or Landscape, Special Laminated

* __ insert PT or LS for portrait and landscape respectively

A3 pre-printed tickets are an easy, eye catching solution for in-store sales

The A3 'specialty' pre-printed tickets are versatile for many uses

If you can't decide what ticket you may need, choose the 'mix' pack for a combination of all styles in A3

Available in portrait and landscape

Pack of 10 tickets

Add to snap frames (page 91), ticket frames (pages 92-94) and acrylic signage (page 83)

A4 Tickets - % Off



Code	Size	Style
TI-A4__-10	210 x 297mm	A4 Portrait or Landscape, 10% Off
TI-A4__-15	210 x 297mm	A4 Portrait or Landscape, 15% Off
TI-A4__-20	210 x 297mm	A4 Portrait or Landscape, 20% Off
TI-A4__-25	210 x 297mm	A4 Portrait or Landscape, 25% Off
TI-A4__-30	210 x 297mm	A4 Portrait or Landscape, 30% Off
TI-A4__-50	210 x 297mm	A4 Portrait or Landscape, 50% Off

* __ insert PT or LS for portrait and landscape respectively

A4 pre-printed tickets are an easy, eye catching solution for in-store sales

A4 '% off' pre-printed tickets are available in 10, 15, 20, 25, 30 and 50 off styles

Available in portrait and landscape

Pack of 10 tickets

Add to snap frames (page 91), ticket frames (pages 92-94) and acrylic signage (page 83)

A4 Tickets - Under \$



Code	Size	Style
TI-A4__-U10	210 x 297mm	A4 Portrait or Landscape, Under 10
TI-A4__-U15	210 x 297mm	A4 Portrait or Landscape, Under 15
TI-A4__-U20	210 x 297mm	A4 Portrait or Landscape, Under 20

* __ insert PT or LS for portrait and landscape respectively

A4 pre-printed tickets are an easy, eye catching solution for in-store sales

A4 'under \$' pre-printed tickets are available in 10, 15 and 20 styles

Available in portrait and landscape

Pack of 10 tickets

Add to snap frames (page 91), ticket frames (pages 92-94) and acrylic signage (page 83)

PRE-PRINTED TICKETS

A4 Tickets - Specialty



Code	Size	Style
TI-A4__MIX	210 x 297mm	A4 Portrait or Landscape, Mix
TI-A4__NEW	210 x 297mm	A4 Portrait or Landscape, New
TI-A4__SALE	210 x 297mm	A4 Portrait or Landscape, Sale
TI-A4__SALENOW	210 x 297mm	A4 Portrait or Landscape, Sale Now On
TI-A4__SPEC-L	210 x 297mm	A4 Portrait or Landscape, Special Laminated

* __ insert PT or LS for portrait and landscape respectively

A4 pre-printed tickets are an easy, eye catching solution for in-store sales

The A4 'specialty' pre-printed tickets are versatile for many uses

If you can't decide what ticket you may need, choose the 'mix' pack for a combination of all styles in A4

Available in portrait and landscape

Pack of 10 tickets for single styles and pack of 20 for mixed tickets

Add to snap frames (page 91), ticket frames (pages 92-94) and acrylic signage (page 83)

A5 Tickets - % Off



Code	Size	Style
TI-A5__10	148.5 x 210mm	A5 Portrait or Landscape, 10% Off
TI-A5__15	148.5 x 210mm	A5 Portrait or Landscape, 15% Off
TI-A5__20	148.5 x 210mm	A5 Portrait or Landscape, 20% Off
TI-A5__25	148.5 x 210mm	A5 Portrait or Landscape, 25% Off
TI-A5__30	148.5 x 210mm	A5 Portrait or Landscape, 30% Off
TI-A5__50	148.5 x 210mm	A5 Portrait or Landscape, 50% Off

* __ insert PT or LS for portrait and landscape respectively

A5 pre-printed tickets are an easy, eye catching solution for in-store sales

A5 '% off' pre-printed tickets are available in 10, 15, 20, 25, 30 and 50 off styles

Available in portrait and landscape

Pack of 10 tickets

Add to acrylic signage (page 83), easy clips (pages 95-96) and fast grips (page 97)

A5 Tickets - Under \$



Code	Size	Style
TI-A5__U10	148.5 x 210mm	A5 Portrait or Landscape, Under 10
TI-A5__U15	148.5 x 210mm	A5 Portrait or Landscape, Under 15
TI-A5__U20	148.5 x 210mm	A5 Portrait or Landscape, Under 20

* __ insert PT or LS for portrait and landscape respectively

A5 pre-printed tickets are an easy, eye catching solution for in-store sales

A5 'under \$' pre-printed tickets are available in 10, 15 and 20 styles

Available in portrait and landscape

Pack of 10 tickets

Add to acrylic signage (page 83), easy clips (pages 95-96) and fast grips (page 97)

A5 Tickets - Specialty



Code	Size	Style
TI-A5_-MIX	148.5 x 210mm	A5 Portrait or Landscape, Mix
TI-A5_-NEW	148.5 x 210mm	A5 Portrait or Landscape, New
TI-A5_-SALE	148.5 x 210mm	A5 Portrait or Landscape, Sale
TI-A5_-SALENOW	148.5 x 210mm	A5 Portrait or Landscape, Sale Now On
TI-A5_-SPEC-L	148.5 x 210mm	A5 Portrait or Landscape, Special Laminated

* __ insert PT or LS for portrait and landscape respectively

A5 pre-printed tickets are an easy, eye catching solution for in-store sales

The A5 'specialty' pre-printed tickets are versatile for many uses

If you can't decide what ticket you may need, choose the 'mix' pack for a combination of all styles in A5

Available in portrait and landscape

Pack of 10 tickets for single styles and pack of 20 for mixed tickets

Add to acrylic signage (page 83), easy clips (pages 95-96) and fast grips (page 97)

A6 Tickets



Code	Size	Style
TI-A6PT-__	105 W x 148.5mm H	A6 Portrait, 10, 15 or 20% Off
TI-A6PT-CLEAR	105 W x 148.5mm H	A6 Portrait, Clearance
TI-A6PT-HALF	105 W x 148.5mm H	A6 Portrait, Half Price
TI-A6PT-NEW	105 W x 148.5mm H	A6 Portrait, New
TI-A6PT-REDUCED	105 W x 148.5mm H	A6 Portrait, Reduced
TI-A6PT-SLASH	105 W x 148.5mm H	A6 Portrait, Price Slashed
TI-A6PT-WASNOW	105 W x 148.5mm H	A6 Portrait, Was Now

* __ insert 10, 15, 20 for 10, 15 and 20% off tickets respectively

A6 pre-printed tickets are an easy, eye catching solution for in-store sales

The A6 pre-printed tickets are versatile for many uses

Available in portrait only

Pack of 25 tickets

Add to acrylic signage (page 83), easy clips (pages 95-96), fast grips (page 97) and shelf talkers (pages 47-46)

A7 Tickets



Code	Size	Style
TI-A7PT-__	74.25 W x 105mm H	A7 Portrait, 10, 15 or 20% Off
TI-A7PT-CLEAR	74.25 W x 105mm H	A7 Portrait, Clearance
TI-A7PT-HALF	74.25 W x 105mm H	A7 Portrait, Half Price
TI-A7PT-NEW	74.25 W x 105mm H	A7 Portrait, New
TI-A7PT-REDUCED	74.25 W x 105mm H	A7 Portrait, Reduced
TI-A7PT-SLASH	74.25 W x 105mm H	A7 Portrait, Price Slashed
TI-A7PT-WASNOW	74.25 W x 105mm H	A7 Portrait, Was Now

* __ insert 10, 15, 20 for 10, 15 and 20% off tickets respectively

A7 pre-printed tickets are an easy, eye catching solution for in-store sales

The A7 pre-printed tickets are versatile for many uses

Available in portrait only

Pack of 25 tickets

Add to acrylic signage (page 83), easy clips (pages 95-96), fast grips (page 97) and shelf talkers (pages 47-46)

END-SIGN™ POINT OF SALE FLAGS

End-Sign™ Kit



Established in 1974, End-Sign™ is the foundation of our company and it is still a best selling point of sale tool

Available in pre-printed or customisable kits

The End-Sign™ unit consists of an adhesive base, bush, pole and end cap

End-Sign™ units are available in white or black

Perfect for signage companies who print their own flags

Blank flags available

Code	Size	Finish
ES-UNIT-WT-T	47 W x 800mm L	White Kit
ES-UNIT-BK-T	47 W x 800mm L	Black Kit
ES-B-BLANK-F	420 W x 680mm L	Blank White Flag, Flat Cut
ES-B-BLANK-V	420 W x 680mm L	Blank White Flag, V Cut

End-Sign™ Base



All End-Sign™ components are also sold separately so you can always purchase spare stock

The End-Sign™ base is 122mm L and can adhere directly to most flat surfaces, ideal for storefront windows

The base can also be drilled directly into walls

The bush component slides into the base

Solid design

Code	Size	Finish
ES-BASE-ES-1W	47 W x 122mm L	White
ES-BASE-ES-1K	47 W x 122mm L	Black

End-Sign™ Bush



All End-Sign™ components are also sold separately so you can always purchase spare stock

The End-Sign™ bush is 58mm L and attaches directly into the base

The bush's unique design allows your flag to be positioned at 3 different angles

The bush component slides into the base

Solid design

Code	Size	Finish
ES-BUSH-W	32 H x 58mm L	White
ES-BUSH-K	32 H x 58mm L	Black

End-Sign™ Pole



All End-Sign™ components are also sold separately so you can always purchase spare stock

The End-Sign™ pole is 790mm L and attaches directly into the bush

Insert your flag by removing the end cap and sliding your flag into the tube

Easy to install and remove daily

Code	Size	Finish
ES-POLE-790-W	790mm L	White
ES-POLE-790-K	790mm L	Black

End-Sign™ Cap



All End-Sign™ components are also sold separately so you can always purchase spare stock

The End-Sign™ cap is 25mm L and covers the pole

Available in white and black

Code	Size	Finish
ES-CAP-W	24 Diameter, 25mm H	White
DES-CAP-K	24 Diameter, 25mm H	Black

End-Sign™ Flag Kits



These pre-printed End-Sign™ flags are affordable point of sale signage solutions that suit specialty retailers

Choose from 4 designs - ATM, dry cleaners, fresh fruit and vegies, and fresh seafood

Flags are 420 W x 680mm L

These kits include all End-Sign™ components in white

Easy to install and remove daily

Customise your own flag - see page 108

Code	Components	Style & Finish
ES-F-ATM	Base, Bush, Pole, Cap, Flag	ATM Flag, White Components
ES-F-DRY	Base, Bush, Pole, Cap, Flag	Dry Cleaners Flag, White Components
ES-F-FRUIT	Base, Bush, Pole, Cap, Flag	Fresh Fruit Flag, White Components
ES-F-SEAFOOD	Base, Bush, Pole, Cap, Flag	Seafood Flag, White Components

END-SIGN™ POINT OF SALE FLAGS

End-Sign™ Flag Kits



These pre-printed End-Sign™ flags are affordable point of sale signage solutions that suit any retailer

Choose from 3 colourful designs - 'now open', 'open 7 days' and 'sale'

Flags are 420 W x 680mm L

These kits include all End-Sign™ components in white

Easy to install and remove daily

Customise your own flag - see below

Code	Components	Style & Finish
ES-F-NOWOPEN	Base, Bush, Pole, Cap, Flag	Now Open Flag, White Components
ES-F-OPEN7	Base, Bush, Pole, Cap, Flag	Open 7 Days Flag, White Components
ES-F-SALE	Base, Bush, Pole, Cap, Flag	Sale Flag, White Components

End-Sign™ Custom



Customise your own End-Sign™ flag

End-Sign™ flags encourage impulse purchases with enticing graphics and direct customer messages

Create multiple branded End-Sign™ flags to alternate on display and keep your message fresh

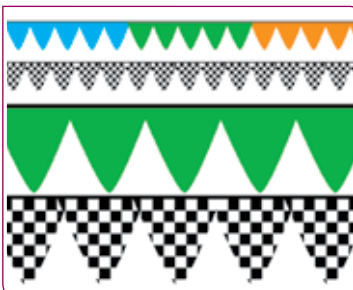
All End-Sign™ flags are UV stabilised to withstand the elements

Flags available in flat or 'V' style

To customise your own flag, call us for a quote

Code	Size	Finish
ES-B-CUSTOM-P	420 W x 680mm L Flag	White Components

Bunting



Bunting is an ideal flag solution for car yards, real estate and branded events

Available in gala or pennant bunting styles

Gala bunting is available in standard colours or checked flags with no space between flags

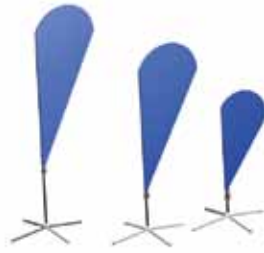
Pennant bunting has spaced flags in your choice of standard colours

Custom bunting is also available with colours, logos and sizes of your choice

To customise your own bunting or order your coloured set, call us for a quote

Code	Size	Style & Finish
ES-BUNT-CH-MTR	210mm Drop	Standard Colours, PVC Light
ES-BUNT-G-MTR	210mm Drop	Checked, PVC Light
ES-BUNT-PH-MTR	200 W x 230mm Drop	PVC Heavy
ES-BUNT-PL-MTR	200 W x 230mm Drop	PVC Light
ES-BUNT-CUSTOM	Customised	Customised

Teardrop FlyBanners™



FlyBanners™ are eye catching outdoor banners ideal for flagging down passing traffic

The teardrop FlyBanners™ come in 3 sizes

Available in 2.5, 3.4 and 4m H

The teardrop FlyBanner kit includes either single sided or double sided printing, a surface base, a spike base for soft ground use and a carry bag

See below for pre-printed 'open' and 'sale' teardrop banners

Kit also sold separately for your own printing

Code	Size	Style & Finish
ES-TDPK-__2500-T	900 W x 1800mm H	2.5m with Components, Customised
ES-TDPK-__3400-T	1000 W x 2400mm H	3.4m with Components, Customised
ES-TDPK-__4000-T	1000 W x 3000 H	4m with Components, Customised
ES-TDK-2500	2.5m Components	2 Bases in Silver, Black Pole and Carry Bag
ES-TDK-3400	3.4m Components	2 Bases in Silver, Black Pole and Carry Bag
ES-TDK-4000	4m Components	2 Bases in Silver, Black Pole and Carry Bag

* __ insert SS or DS for single sided and double sided printing respectively

Feather FlyBanners™



FlyBanners™ are eye catching outdoor banners ideal for flagging down passing traffic

The feather FlyBanners™ come in 3 sizes

Available in 3, 4 and 5m H

The feather FlyBanner kit includes either single sided or double sided printing, a surface base, a spike base for soft ground use and a carry bag

See below for pre-printed 'open' and 'sale' teardrop banners

Kit also sold separately for your own printing

Code	Size	Style & Finish
ES-FBPK-__3000-T	600 W x 2400 H	3m with Components, Customised
ES-FBPK-__4000-T	900 W x 3000 H	4m with Components, Customised
ES-FBPK-__5000-T	750 W x 3800 H	5m with Components, Customised
ES-FBK-3000	3m Components	2 Bases in Silver, Black Pole and Carry Bag
ES-FBK-4000	4m Components	2 Bases in Silver, Black Pole and Carry Bag
ES-FBK-5000	5m Components	2 Bases in Silver, Black Pole and Carry Bag

* __ insert SS or DS for single sided and double sided printing respectively

Open & Sale FlyBanner Kits



Pre-designed FlyBanners™ are available with 'open' and 'sale' messages

Available in teardrop and feather FlyBanner styles

Kits include all components and single sided dye sublimation printing

Simple and effective outdoor signage solutions

Easy to set up and remove at the end of the day

Effective when used in multiples

Code	Size	Style & Finish
ES-TDPK-OPEN-T	1000 W X 2400mm H	Teardrop Open, Chrome Base, Black Pole
ES-TDPK-SALE-T	1000 W X 2400mm H	Teardrop Sale, Chrome Base, Black Pole
ES-FBPK-OPEN-T	600 W x 2400mm H	Feather Open, Chrome Base, Black Pole
ES-FBPK-SALE-T	600 W x 2400mm H	Feather Sale, Chrome Base, Black Pole

BANNER STANDS

NEW

X Banner Stand



Code	Size	Finish
ES-X-BANNER-DP	600 W x 1600mm H	Customised PVC

The all NEW X banner stand is an ideal portable promotional tool

Professional looking and affordable

Great poster quality

Fully customised printing to suit your brand

Minimum order quantity 30

Lead time 7-10 working days from artwork approval

Standard Banner Stand



Code	Size	Style & Finish
BU-ST850S2000	850 W x 2000mm H	Base with Custom Printing, Silver
BU-ST1200S2000	1200 W x 2000mm H	Base with Custom Printing, Silver

The standard banner stand is an ideal portable promotional tool that gets your message out there

Professional looking and affordable

Available in 2 sizes

Fully customised printing to suit your brand

No minimum order

Lead time 6 working days from artwork approval

Deluxe Banner Stand



Code	Size	Style & Finish
BU-DX850S2150	850 W x 2150mm H	Base with Custom Printing, Silver
BU-DX1200S2150	1200mm W x 2150mm H	Base with Custom Printing, Silver

The deluxe banner stand is an ideal portable promotional tool that gets your message out there

Sturdy and stylish

Available in 2 sizes

Fully customised printing to suit your brand

No minimum order

Lead time 6 working days from artwork approval

Standard Base



The standard banner stand base is perfect for signage and print companies looking to print their own banners

Professional looking and affordable

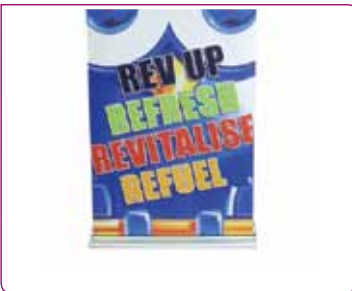
850 W x 2000mm H

Base only

No minimum order

Code	Size	Finish
BU-SQ-2000S850	850 W x 2000mm H	Silver

Deluxe Base



The deluxe banner stand base is perfect for signage and print companies looking to print their own banners

Sturdy and stylish

850 W x 2000mm H

Base only

No minimum order

Code	Size	Finish
BU-PQ-2050S830	830 W x 2050mm H	Silver

Signboard



Signboards are perfect for footpaths to attract passing customers

Available with blue, black or red base

Solid and sturdy design

Simply fill the base with water or sand and slide the signboard into the base

Customised signboards have a lead time of 6 working days from artwork approval

Components also sold separately for customers who print their own signs

Code	Size	Style & Finish
ES-SB-__-T	500 Diameter, 800mm H	Blue, Black or Red Base with Blank Signboard
ES-SB-__	500mm Diameter	Blue, Black or Red Base
ES-SIGNBOARD	510 W x 800 H x 6mm Thick	Blank White Signboard
ES-SBP-CUSTOM-T	500 Diameter, 800mm H	Customised Signboard with Base

* __ insert BL, BK or RD for blue, black and red bases respectively

X-GLOO EVENT TENT

X-ACT: The Standard X-GLOO



The X-ACT is the standard X-GLOO available

Available in 4x4, 5x5 and 6x6 configurations the X-ACT is economical and complete

X-ACT is available with colour matching matrix and tubes in black, white, red and blue

With 4 silver walls

The X-ACT offers the right coverage for any occasion

Quick stock turnaround

The X-ACT includes a multifunction transport bag, hand pump and repair kit

Code	Size	Finish
XG-XX44A	3.9 W x 3.9 L x 2.6m H	Black, White, Red or Blue
XG-XX55A	4.85 W x 4.85 L x 3.2m H	Black, White, Red or Blue
XG-XX66A	5.8 W x 5.8 L x 3.9m H	Black, White, Red or Blue

Enhance your brand exposure with this unique event tent!



	Sizes: 4x4	5x5	6x6	
Exterior Side Length:	3.9	4.85	5.8	m
Entrance Height:	2.0	2.5	3.0	m
Total Height:	2.6	3.2	3.9	m
Tube Diameter:	26	33	40	cm
Weight:	15	21	28	kg
Assembly Time				
Hand Pump:	15	23	30	min
Electric Pump:	5	10	15	min

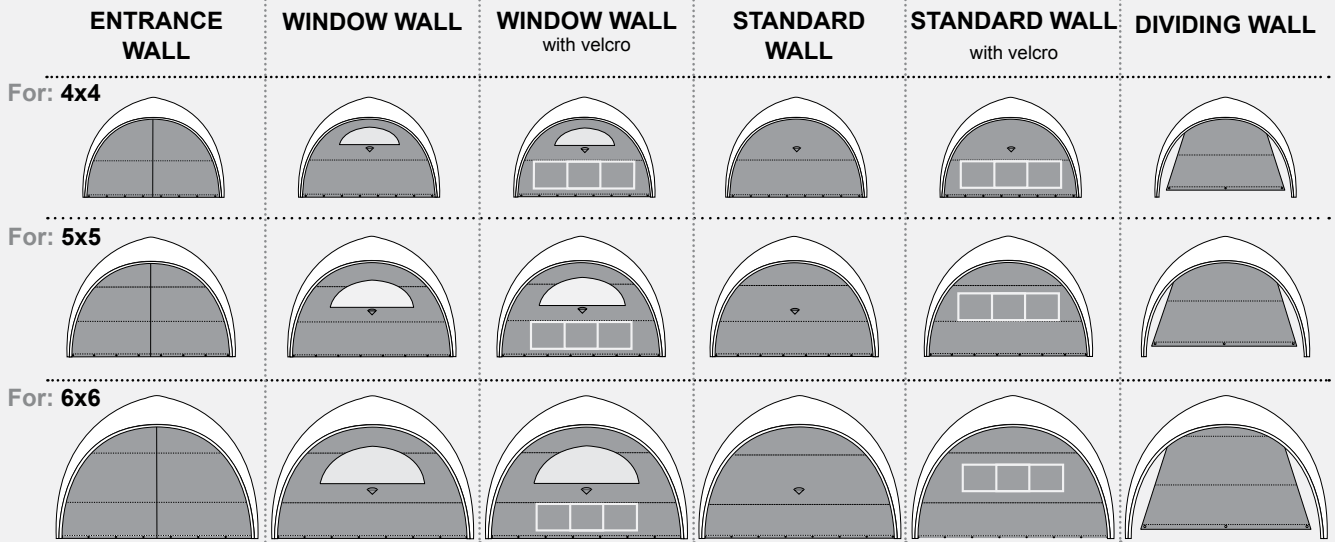
*all specifications are approximate

- Features: Elegant design, quick set-up, modular construction, in and outdoor use, premium materials, UV-resistant, fire protection norm B1/CPAI-84, waterproof, wind stable up to 60 km/h
- Colour design: One colour - black, white, red or blue
- Elements: Matrix connections with zipper
- Contents of Delivery: Matrix with 4 walls, hand pump, repair kit, in multifunction transport bag

X-ACT: Walls

Wall + Branding: digital print on Velcro-Banner (2-3 weeks)
or digital print Wall (2-3 weeks)

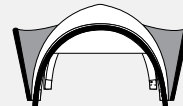
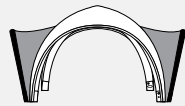
For:	4x4	5x5	6x6	
Width:	376	475	566	cm
Height:	224	282	337	cm
Velcro Banner	90 x 300			cm



X-ACT: Canopy and Canopy Banner

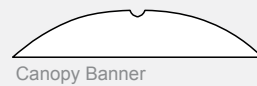
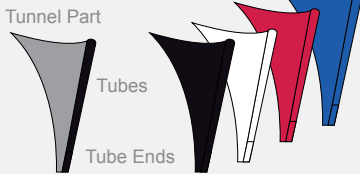
Tunnel Part
Tubes/Tube Ends

Canopy Banner + Branding: digital print (2-3 weeks)



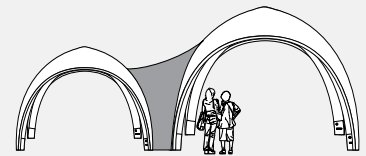
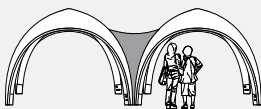
For:	4x4	5x5	6x6	
Covered area with 4 Canopies:	16	25	36	m ²

For:	5x5	6x6	
Width:	290	353	cm
Height:	54.5	61	cm



X-ACT: Tunnel Parts

Tunnel Parts



For: 4 ▷ 4 | 5 ▷ 5 | 6 ▷ 6

4 ▷ 5 | 5 ▷ 6

4 ▷ 6



X-GLOO EVENT TENT

X-PERT: The Customised X-GLOO



Fully customised X-GLOO to suit your requirements

Available in 4x4, 5x5, 6x6 and now 8x8 configurations - see page 116

You can choose to use one X-GLOO or add additional X-GLOOs onto each other with the accessories available

When choosing to customise your own X-GLOO, you can add many different elements to create that unique display

Available with window walls, dividing walls, canopies, entrance walls and tunnel elements

Ideally combined with promotional signage from our SI Brand range of products - see pages 109 to 111

Code	Size	Finish
XG-XX44P	3.9 W x 3.9 L x 2.6m H	Customised
XG-XX55P	4.85 W x 4.85 L x 3.2m H	Customised
XG-XX66P	5.8 W x 5.8 L x 3.9m H	Customised

Whether outdoors or indoors, the X-GLOO gets noticed!



	Sizes: 4x4	5x5	6x6	
Exterior Side Length:	3.9	4.85	5.8	m
Entrance Height:	2.0	2.5	3.0	m
Total Height:	2.6	3.2	3.9	m
Tube Diameter:	26	33	40	cm
Weight:	15	21	28	kg
Assembly Time				
Hand Pump:	15	23	30	min
Electric Pump:	5	10	15	min

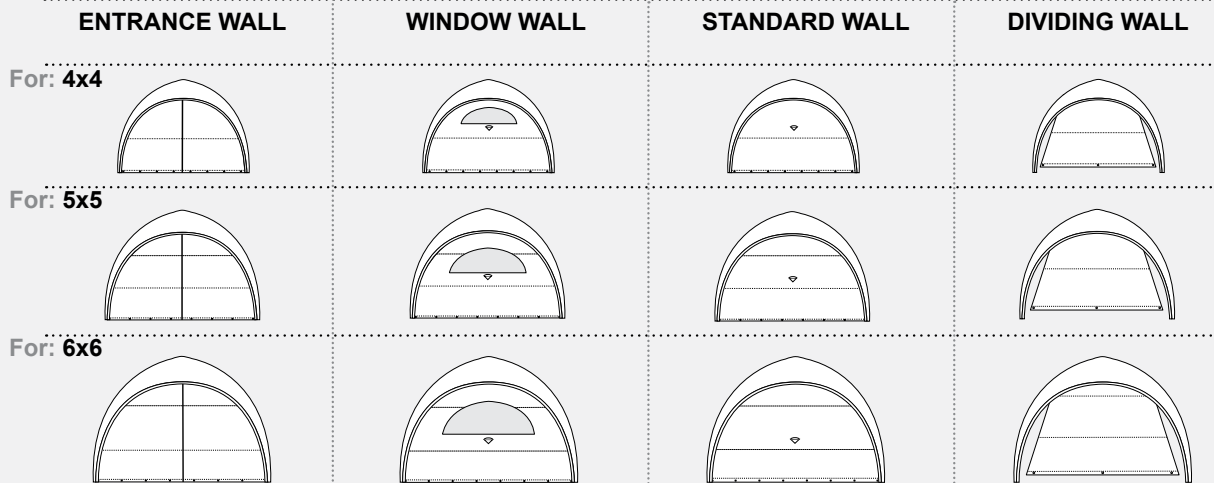
*all specifications are approximate

Features:	Elegant design, quick set-up, modular construction, in and outdoor use, premium materials, UV-resistant, fire protection norm B1/CPAI-84, waterproof, wind stable up to 60 km/h
Colour design:	Unlimited colour combinations
Branding:	Available on roof, tubes and walls
Elements:	Matrix connections with zipper
Contents of Delivery:	Matrix incl. hand pump, repair kit in multifunction transport bag
Lead Time:	4-6 weeks

X-PERT: Walls

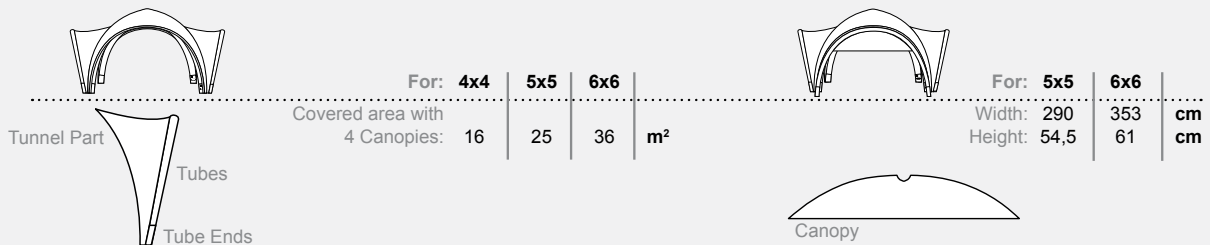
Walls + special colours*
 +++ **Branding:** sewn application / screen print / digital print
 > also as 2-sided Wall with Lightblocker

For:	4x4	5x5	6x6	
Width:	376	475	566	cm
Height:	224	282	337	cm



X-PERT: Canopy and Canopy Banner

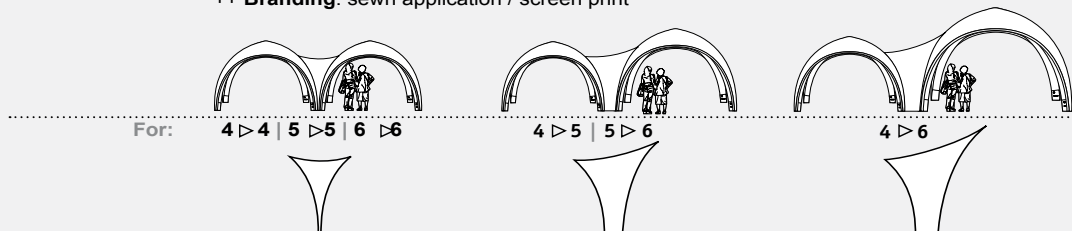
Tunnel Part/Banner + special colours*
 Tubes
 Tube Ends + special colours*
 +/+ **Branding:** Canopy: sewn application / screen print Banner: screen print / digital print



*upon request at surcharge + additional delivery time

X-PERT: Tunnel Parts

Tunnel Part + special colours*
 ++ **Branding:** sewn application / screen print



X-GLOO EVENT TENT

X-GLOO: NEW 8x8



The all NEW 8x8 X-GLOO is now available

At almost 8m wide and 5m high, the 8x8 X-GLOO has an impressive display area

You can choose to use one X-GLOO or add additional X-GLOOs onto each other with the accessories available

Available with standard walls, window walls, entrance walls and tunnel elements

Ideally combined with promotional signage from our SI Brand range of products - see pages 109 to 111

Code	Size	Finish
XG-XX88P	7.85 W x 7.85 L x 4.8m H	Customised

Ideal for:

- mobile marketing actions
- one-of-a-kind marketing campaigns
- large-scale roadshows
- big events
- innovative tradeshow presentations



Size:		8x8
Exterior Side Length:	7.85	m
Entrance Height	3.94	m
with Middle Wall:	3.35	m
Total Height	4.8	m
Tube Diameter:	43	cm
Weight:	42	kg
Assembly Time		
Electric Pump:	25	min

*all specifications are approximate

Features:

Color design:

Branding:

Elements:

Contents of Delivery:

Lead Time:

Elegant design, quick set-up, modular construction, in- + outdoor use, premium materials, UV-resistant, Fire protection norm B1/CPAI-84, waterproof, wind stable up to 40 km/h

unlimited color combinations

is available on roof, tubes and walls

Matrix connections with zipper

Matrix incl. Hand Pump, Setup Support Bar, Support Bar, Tension Line Set, Repair Kit in Quick Packsack

4-6 weeks

X-GLOO: 8x8 Walls



Walls  + special colours*
 +++ **Branding:** sewn application / screen print
 > also as 2-sided Wall with Lightblocker

Canopies and dividing walls are not available for the 8x8

Tubes are only available in black

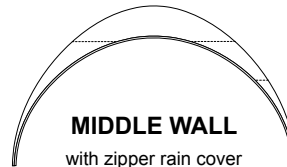
Digital print walls not available for the 8x8

Choose X-GLOO - the ultimate branding tool!

The all NEW 8x8 X-GLOO also has a unique new wall feature

The 'middle' wall is another branding strip that can be used to break up your X-GLOO and create a dynamic look

also available as transparent PVC wall as shown

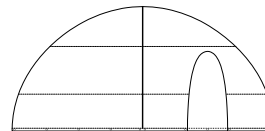


MIDDLE WALL

with zipper rain cover

Width: 776 cm

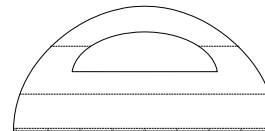
Height: 83 cm



ENTRANCE WALL

Width: 760 cm

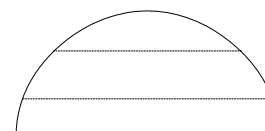
Height: 358 cm



WINDOW WALL

Width: 760 cm

Height: 358 cm



STANDARD WALL

Width: 760 cm

Height: 358 cm



X-GLOO EVENT TENT

X-RELAX: The Seat



The X-RELAX seating is an inflatable stool of elegant design and clever functionality

The core of the X-RELAX is a cylindrical air tube, similar to the tube construction of the X-GLOO

This construction provides the stool with enormous stability

The ideal accessory for any event location, the round stool fits easily into the 100 mm transport bag

Customise with your own logo and colours

Ready to use in moments

Code	Size	Finish
XG-XAR	410 Diameter, 600mm H	Customised

Join the world's leading brands!



X-GLOO: Accessories

PUMPS

DOUBLE HUB HAND PUMP

BATTERY OPERATED PUMP

240V charger included
6 month warranty
Max air flow 500L / min



Set up your X-GLOO in a few minutes with the battery operated pump

Transport your X-GLOO by backpack for 4x4 configurations or the trolley for the larger X-GLOOs

With a range of accessories to suit all indoor and outdoor events

Also with equipment and extras to suit your X-GLOO use - straps, tension levels and protection



BACKPACK OR TROLLEY

TROLLEY XL

165 L, 7 kg
45 x 40 x 90 cm



MULTIFUNCTION STRAPS



OVERPRESSURE VALVES

STABILISATION SETS

For soft surfaces:

Set with steel and screw tent pegs



ZIPPERS AND ZIPPER RAIN COVERS



BALLAST CONNECTIONS

PROTECTIVE SOLE



SAFETY STRAPS



For hard surfaces:

Set with 8 ballast sacks:

To be filled with sand or gravel

Set with 8 ballast sacks including fill set:

To be filled with water

max. ballast per Tube:

4x4 - 7 L inner / 14 L outer

5x5 - 11 L inner / 22 L outer

6x6 - 14 L inner / 30 L outer



ZIPPER TENSION RELEASE



SAFETY VALVES

1. General

In consideration of SI Retail Pty Ltd, ABN 54 143 754 385 (the supplier) agreeing to supply goods and/or services (goods) to the Customer, the Customer agrees and accepts that these terms and conditions apply to all sale of goods by the supplier to the Customer, to the exclusion of any conditions of sale appearing on any document of the Customer. The Customer further acknowledges that these Terms and Conditions of Sale constitute the entire agreement of the parties as to the supply of goods by the supplier, and may not be varied without the prior written agreement of the supplier.

2. Ownership of Goods

- (a)(i) Property in any goods delivered to the customer will not pass to the customer until the later of (a) payment in full for the goods; (b) payment in full of all monies owing or unpaid by the customer to the supplier including monies in respect of goods previously or subsequently supplied to the customer by the supplier.
- (ii) The customer shall store the goods in such a manner as to show clearly that they are the property of the supplier and the customer shall keep records of all use and sales of such goods.
- (iii) The customer shall keep the goods free from and will indemnify the supplier against any charge, lien or other claim thereon. The customer has no title or right to charge or encumber the goods before payment to the supplier under this clause.
- (iv) If the customer fails to pay the purchase price or any other debts to the supplier when due, or commits any act of bankruptcy, the supplier may without notice and without prejudice to any of its rights and remedies recover and/or resell the goods or any of them and may by its servants or agents enter upon the customer's premises for that purpose.
- (b) Goods delivered to the customer shall be at the customer's risk on delivery to the customer.
- (c) Notwithstanding paragraph (a), the customer may on-sell the goods on commercial terms in the ordinary course of its business before the purchase price for the goods and other debts to the supplier have been paid to the supplier, but in this case the customer shall hold the proceeds of such sale on trust for the supplier in a separate account and account to the supplier for such proceeds on demand.
- (d) The Customer is not entitled to return the goods and refuse or delay payment on the grounds that the property in the goods has not yet passed.

3. Delivery – Returns - Claims

- (a) Goods will be sent via post or common carrier unless instructed by the Customer to use an alternative freight service. Freight costs can be obtained by contacting the office of the supplier.
- (b) Custom manufactured and special packaged items are not returnable. Stock line items may be returned within fourteen (14) days of delivery for credit or refund. A request for return must be made in writing and returns will not be accepted without prior approval from the supplier. The Supplier reserves the right to charge an administration/handling fee of 10% to any returns.
- (c) All Freight costs in relation to returns are at the Customer's expense.
- (d) Claims arising from damage or loss in transit must be made in writing within 7 days of date of Invoice.

4. Price - Specials

Unless otherwise agreed in writing the price of the goods shall be that price charged by the supplier at the date of order, plus any transportation, freight, postage, packaging, handling, insurance and goods and services tax ("GST") and any other expense plus any amount which the supplier is required to pay on account of sales or other taxes assessed in relation to the goods. GST where applicable, will be charged at the appropriate rate ruling at the date of invoice. Goods are sold per pack unless otherwise stated in the price structure. Updated information and specials can be obtained by visiting our web site at www.sishop.com.au or by calling our Office.

5. Terms of Payment

- (a) Payment for material, goods and services pursuant to this agreement including GST is due on the Due Date stated on the Invoice and is calculated in net days stated in Terms on the Invoice from the dispatch date of the goods or services provided to the customer unless otherwise stated in writing by the supplier.
- (b) After the due date of payment, the supplier may charge interest on outstanding amounts payable, calculated on a daily balance, at the reference rate of our nominated Banking Corporation + 2%.
- (c) The customer agrees to pay and reimburse the supplier on demand for all legal costs, stamp duty or other costs or expenses suffered or incurred by the supplier in respect of the preparation of any agreements, personal guarantees, securities or other documentation required by the supplier to document or secure the provision of credit to the customer together with all collection and enforcement costs and expenses which the supplier may suffer or incur in connection with the sale of goods or supply of services or provisions of credit to the customer (without limitation) legal costs on a full Indemnity basis.

6. Changes in Ownership

In the event of the customer, being an individual or partnership, incorporates his/her business and the company continues to use the existing account, or the account is used by a company of which he/she is a director, he/she hereby agrees to personally guarantee all due debts. If ownership of the Customer's business changes, the customer will remain liable for all debt incurred on this account until such time as the supplier is notified in writing of such change.

7. Limitation of Liability

The Customer acknowledges that no warranty; condition, description or representation in relation to goods supplied is given by the supplier, expressly or implied. All warranties, terms and conditions in relation to the state, quality of fitness of the goods and of every other kind whether implied by use, statute or otherwise are hereby excluded. The supplier shall not be liable for physical or financial injury, loss or damage or for consequential loss or damage of any kind arising out of the supply of the goods arising out of the supplier's negligence or in any way whatsoever. The supplier's liability for a breach of a condition or warranty implied by Div. 2 of Pt V of the Trade Practices Act 1974 (other than s.69) is hereby limited to: -

- (a) In the case of goods, any one or more of the following:-
 - (i) the replacement of the goods or the supply of equivalent goods;
 - (ii) the repair of the goods;
 - (iii) the payment of the cost of replacing the goods or of acquiring equivalent goods;
 - (iv) the payment of the cost of having the goods repaired; or
- (b) In the case of services again:-
 - (i) the supplying of the services again; or
 - (ii) the payment of the cost of having the services supplied again

The supplier's liability under s.74H of the Trade Practices Act 1974 is expressly limited to a liability to pay the customer an amount equal to:

- (a) the cost of replacing the goods; or the cost of obtaining equivalent goods; or
- (b) The cost of having the goods repaired, whichever is the lowest amount.

8. Exercise of Legal Rights

The failure, delay, relaxation or indulgence on the part of the supplier in exercising any power or right conferred upon the supplier by these Terms and Conditions of Sale does not operate as a waiver of that power or right, nor does any single exercise of any power or right preclude any other or further exercise of it or the exercise of any other power or right under these Terms and Conditions of Sale.

9. Governing Law

These Terms and Conditions of Sale shall be construed in accordance with the law in force in Queensland, Australia and the parties agree to submit to the non-exclusive jurisdiction of the Courts of that state. It shall be competent for the supplier to issue proceedings in Brisbane, Queensland in a Court of competent jurisdiction.

10. Severability

Where these Terms and Conditions of Sale are qualified by any provision of law which applies and which cannot be excluded, where any such provision in these Terms and Conditions of Sale is deemed to be unlawful or unenforceable, such provision shall be severed from these Terms and Conditions of Sale and all other provisions hereof shall remain in force to the fullest extent permitted by law.

SI RETAIL[®] PTY LTD

85 Burchill St, Loganholme QLD 4129

Phone: (07) 3801 0000

Fax: (07) 3801 0022

Email: info@siretail.com.au

Online Shop: www.sishop.com.au

Corporate: www.siretail.com.au

