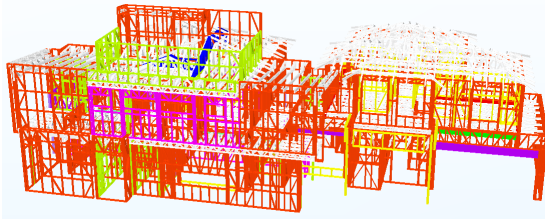
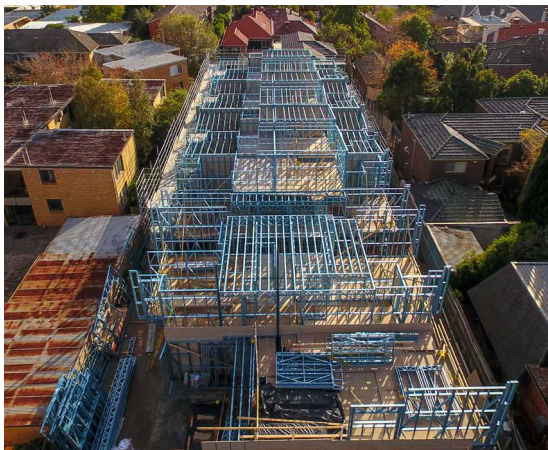


JANUARY 2019



"I'd like to take the opportunity to thank SBS on your delivery sequences and the quality of the frames, it's been great dealing with a company that delivers on its commitments."

Stephen C. - Liberty Builders



Pleasant Road Apartments

BUILDER / Liberty Builders

ARCHITECT / Jam Architects

LOCATION / 99 Pleasant Road, Hawthorn (VIC)

TOTAL L/M OF STEEL FRAME SUPPLIED / 40640.43

TOTAL M² OF SBS GROUP FOOTPRINT AREA / 2195.73

FLOOR COUNT / 3

THE PROJECT CHALLENGE /

- Reduce the build time and deliver a three level townhouse development on a tight site

THE SBS STEEL SOLUTION /

- The original plans were redesigned by SBS Group to substitute a significant amount of structural steel, saving an estimated 4-6 weeks on the structural element of the build.
- The precision of framing made from TRUECORE® steel meant that once the frames were in, there was no need to spend lengthy time on site fixing up twisted and warped timber walls.
- With webs in the floor joists and pre-cut holes in the studs and noggins, it was easier to pass cables and services through to where they were needed.
- As it was a tight site, even the larger frames were light enough to be handled by two people on site without cranae.

PRE-FABRICATED LIGHT GAUGE STEEL FRAMING SOLUTIONS