

# Saheco SV-X Sliding Door System



# Saheco SV-X

Compact

Simple

Minimalistic

Flexible

Reliable



The Saheco SV-X Range provides a compact sliding solution that conceals all mechanisms within the track, resulting in a sleek minimalistic look.

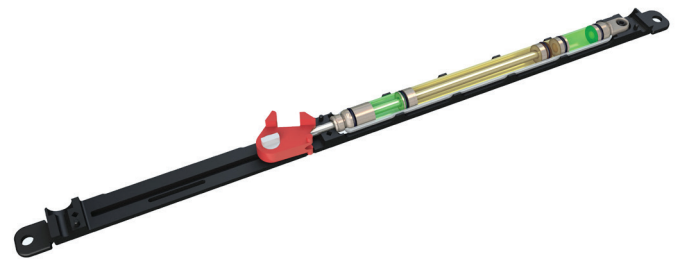
A range of track options are available to suit any application or desired look. Tracks can either be mounted the wall or ceiling, or recessed into the ceiling for a seamless look.

Can suit doors up to 150kg in weight, with a variety of braking and stopping options available.

European Designed and Manufactured to the highest quality. Tested to 100,000 cycles in accordance with EN 1527/EN 1670.



## SOFTPRO®



*The latest soft closing technology from Saheco.*

## Braking Options

### Soft Pro



- Combination of two nitrogen filled gas pistons and one oil filled piston within the same unit.
- Fully adjustable closing speed - no slamming
- Works perfectly on large heavy panels up to 150kg

### Soft Brake



- Hydraulic mechanism which slows down the door on closing to ensure a soft close with no slamming.
- Absorbs the closing force of the door
- Most suitable for SV-X70 Models

### Anti Shock



- A good alternative to the standard retaining brake, a piston stops the panel smoothly against a plastic end stopper, the panel is then retained in place.
- Absorbs some of the shock when closing

### Retaining Brake



- Plastic and rubber stoppers brace the close of the door. The door is then retained in place in the fully closed or fully open positions.

# Saheco SV-X

Compact

Simple

Minimalistic

Flexible

Reliable

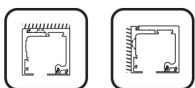
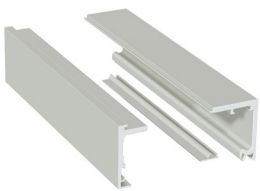


FGS Hardware are proud to be the exclusive distributor for Saheco in Australia and New Zealand.



## Track Options

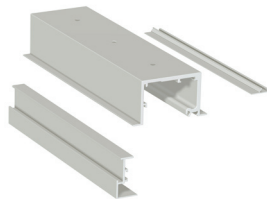
Track 1



T1

Wall/Ceiling Mount Track

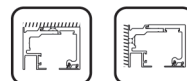
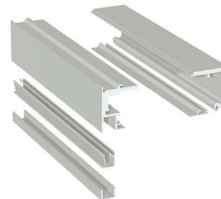
Track 2



T2

Recessed Ceiling Track

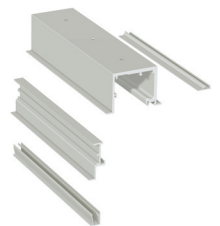
Track 3



T3

Ceiling or Wall Mount with Fixed Panel Pocket

Track 4



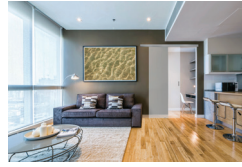
T4

Recessed Ceiling Track with Fixed Panel Pocket

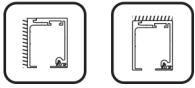
# Ordering Guide

## Step 1 : Determine weight rating required

- Doors up to 70kg - **SV-X70**
- Doors from 70-110kg - **SV-X110**
- Doors from 110 - 150kg - **SV-X150**



## Step 2: Select desired track



**Track 1**  
Wall/Ceiling Mount Track



**Track 2**  
Recessed Ceiling Mount Track



**Track 3**  
Ceiling or Wall Mount with Fixed Panel Pocket



**Track 4**  
Recessed Ceiling Mount with Fixed Panel Pocket

## Step 3: Select Braking Mechanisms



**Retaining Brake**



**Anti-Shock**



**Soft Brake**

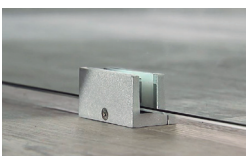


**Soft Pro**

|                     | Retaining Brake | Anti Shock | Soft Brake (SV-X70) | Soft Pro |
|---------------------|-----------------|------------|---------------------|----------|
| Retaining Brake     | Set 1           |            |                     |          |
| Anti Shock          | Set 2           | Set 3      |                     |          |
| Soft Brake (SV-X70) | Set 4           | Set 5      | Set 6               |          |
| Soft Pro            | Set 7           | Set 8      |                     | Set 10   |

*\*Sets include two braking mechanisms*

## Step 4: Accessories if required



**SV-X-FG**  
Floor Guide



**SV-X-GF**  
Glass Fixing



**SV-X-WB**  
Wall Fixing Brackets



**End Caps**

Contact us for a quote  
**03 8562 0881**  
[sales@fgs.com.au](mailto:sales@fgs.com.au)

VIC  
97 Ricketts Rd, Mt Waverley, VIC 3149  
QLD  
12A Technology Dr, Arundel, QLD 4126

