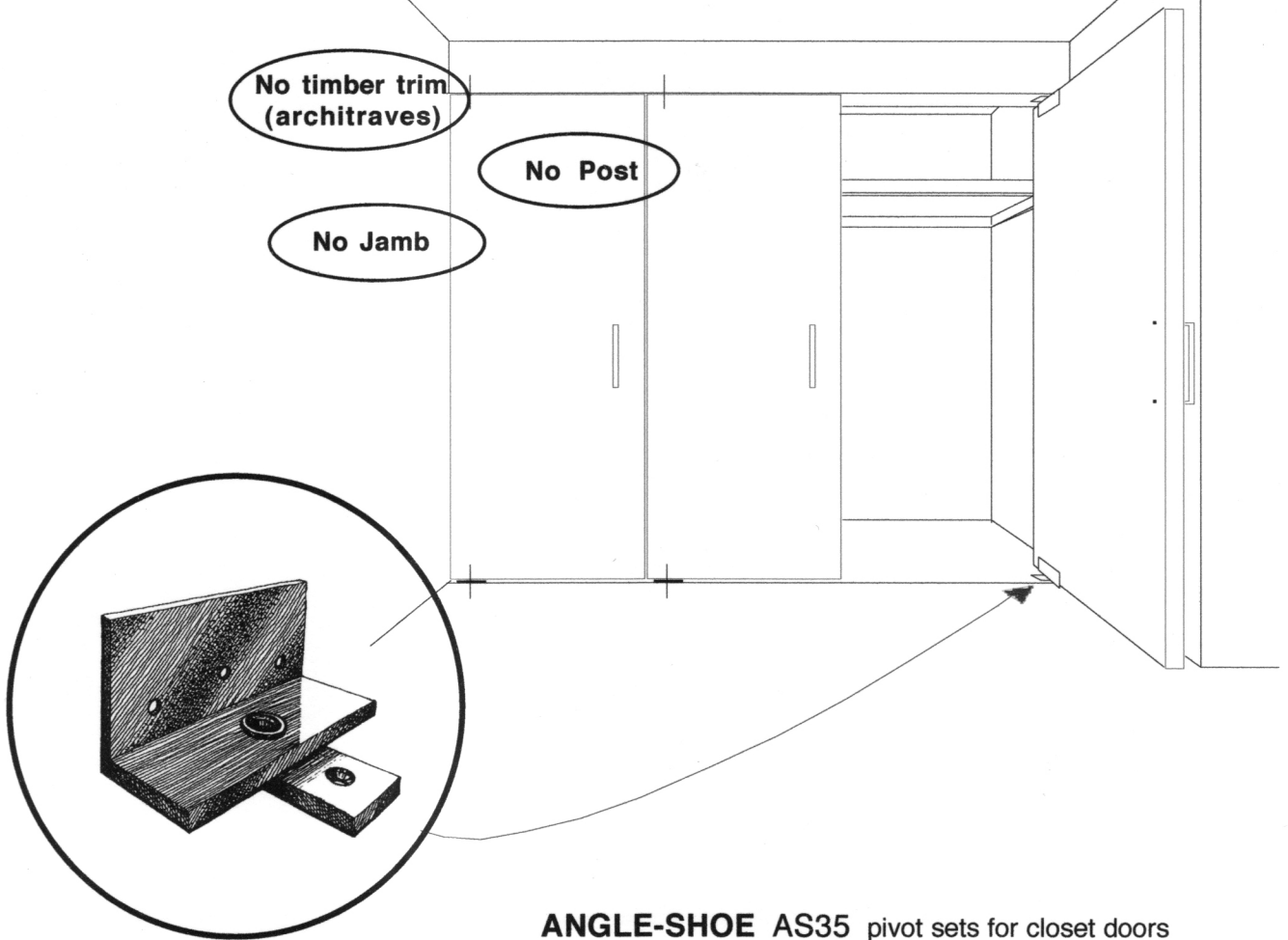


ANGLE-SHOE

pivots for 35mm. closet & wardrobe doors

Product Data Sheet AS35

| | |
|-----------------------|-------|
| Filing Guide - Hinges | |
| Info-link | 1129 |
| Suppliers Index | 2811 |
| SfB/UDC | 30 |
| Masterformat | 08710 |
| 03/03/07 (print date) | |



ANGLE-SHOE AS35 pivot sets for closet doors

APPLICATION 35mm (1 3/8") doors to 50Kg (100 pounds)

ADVANTAGES

- no door jambs, architraves and other timber moulds
- no protruding hinge knuckles
- simple hand-tool installation
- tested to 300,000 cycles

BOXED PIVOT SET

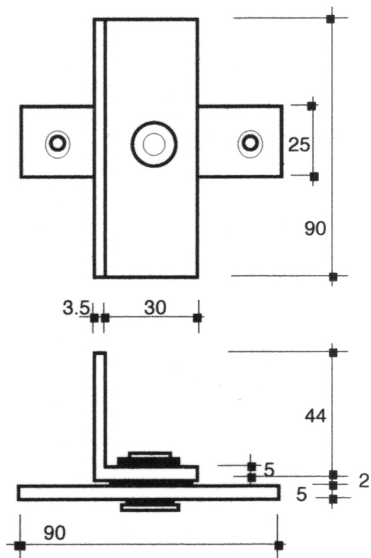
- 2x non-handed pivots refer to above sketch
- fixing screws and fitting instructions

MATERIALS & FINISHES

- angle & plate 6063 aluminium T6 temper
- alum. finish etch primed / grey paint finish
- bushes self-lubricating nylon
- pivot pin tubular steel, zinc passivated
- screws Steel, zinc plated 4.5 dia. CS

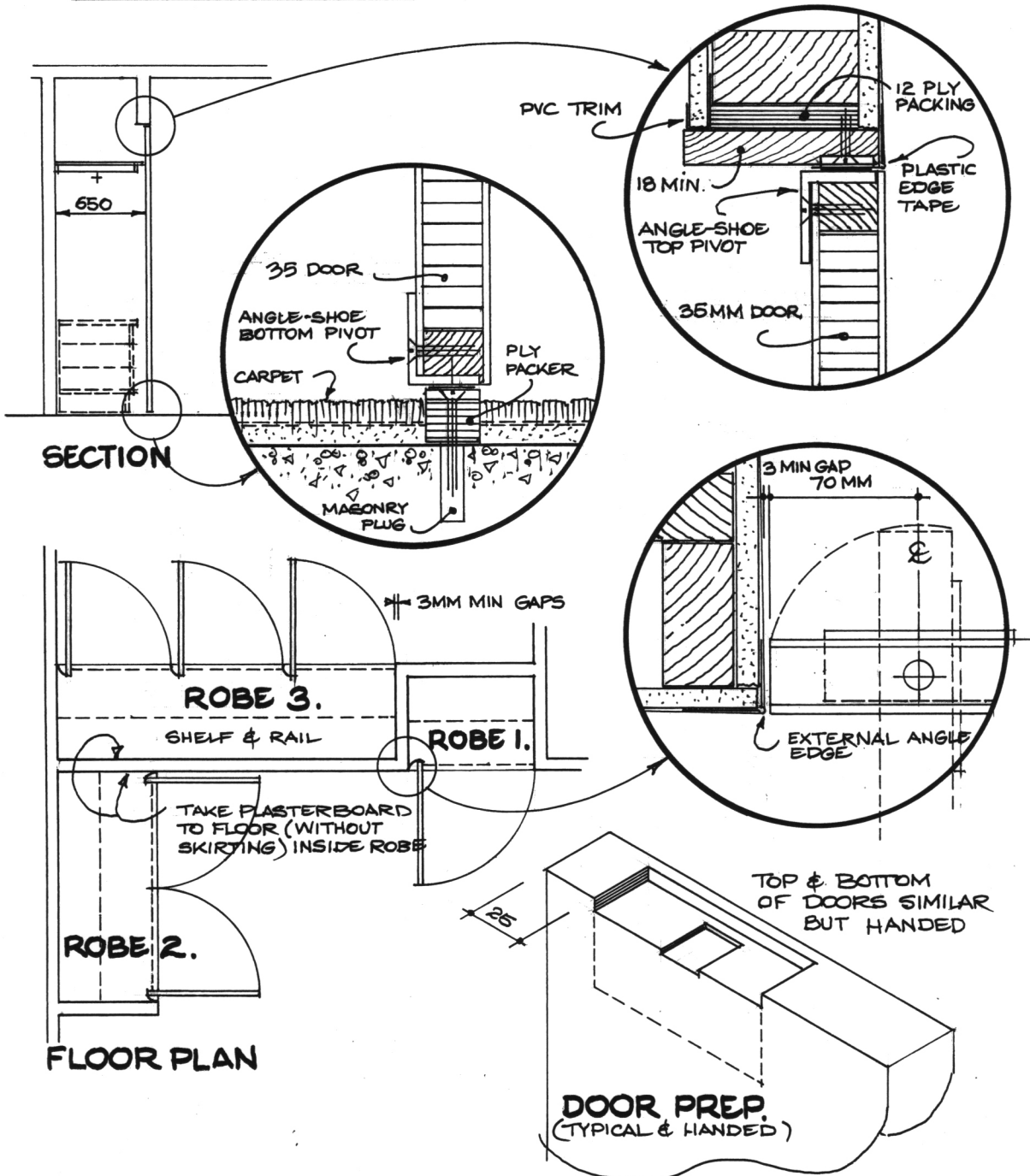
NOTES FOR DESIGNERS

- accurate & plumb plasterboard work to be specified
- pivoting doors reduce the clear door opening width
- pivoting doors in walls do not swing through a full 180°
- the pivot stile of the door swings into the robe 53mm



ANGLE-SHOE

ANGLE-SHOE AS35 CONCEALED PIVOTS WARDROBE & CLOSET DETAILS FOR 35MM DOORS AND SPECIFICATION NOTES



SPECIFICATION NOTES FOR THE 'ANGLE-SHOE' AS55 PIVOT SET

- Uses** For 35mm doors up to 50 kg max. Pivots to be fitted in accordance with the fitting instructions packed with the pivots.
- Walls** Accurate openings in walls are required for doors without frames. Door hanging & plasterboard work to be coordinated between the trades. Extend plasterboard to floor inside wardrobe (without a skirting) for the swing of the pivot stile of the door.
- Jamb** Jamb linings are to be square, plumb and sound. Perforated metal external angles are acceptable for vertical jamb linings.
- Head** A flat sound head is required. Door opening heights vary with floor coverings and must be calculated before preparing the door opening. Use plastic edge tape with flush heads. 'Straiflex' 76mm plastic tape from 'Intex' Melbourne (03) 9357 9299.
- Floor** A sound level floor is required. Pack floor bearing plate with dense ply for carpet thickness and the gap sizes required.
- Doors** To Australian Standard AS 2688. Do not trim cellular core doors. Doors over 2040mm high may need to be stiffened.
- Tolerance** For door openings: +1mm -1mm in 2000mm maximum.
- Prototype** Fabricate prototype door arrangement for multiple use of 'Angle-Shoe' pivot sets for full product understanding.
- Fixings** Screws are supplied with pivots. Use long screws for the floor bearing plate. Supply and fix masonry plugs where required.
- Robe Depth** increase the wardrobe depth to accommodate the swing of the pivot stile of the door. refer to details above.

ANGLE-SHOE PRODUCTS

www.angleshoe.com

25A Wentworth Court 43-51 Giles St. Kingston ACT 2604 AUSTRALIA

Email hstyles@bigpond.net.au T (02) 6232 6455 F (02) 6232 6456

product design Howard Styles architect