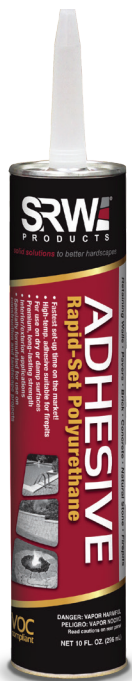


TWO WAYS TO BUILD FASTER, STRONGER AND FOR *LESS!*

TO GIVE YOU THE COMPETITIVE EDGE ...

1



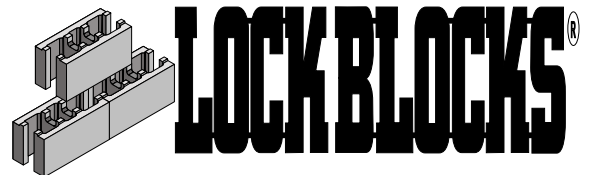
Build your walls with **SRW Adhesive** instead of mortar and you'll save **TIME & MONEY.**

WHY ?

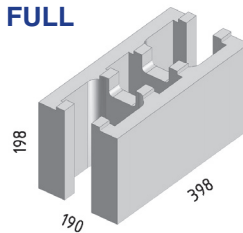
- ✓ Fastest set-up time on the market!
- ✓ High temperature adhesive suitable for firepits
- ✓ For use on dry or damp surfaces
- ✓ Premium, long lasting strength
- ✓ Interior/exterior use
- ✓ Specially formulated for use on construction and landscape projects

SRW Adhesive is a rapid-set polyurethane adhesive formulated to permanently bond concrete masonry block structures.

2



FULL

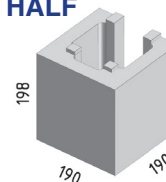


Use our lightweight DIY alternative to concrete blocks.

WHY ?

- ✓ Self locating connectors
- ✓ Allow 2mm adhesive joint

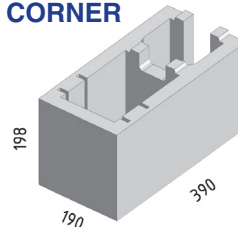
HALF



Typical uses:

- ✓ Retaining walls
- ✓ Front fences
- ✓ Privacy walls
- ✓ Dividing walls
- ✓ Landscaping walls

CORNER



**BAINES
MASONRY**
Quality First

Contact us today and we will help you start reducing costs on your next project!

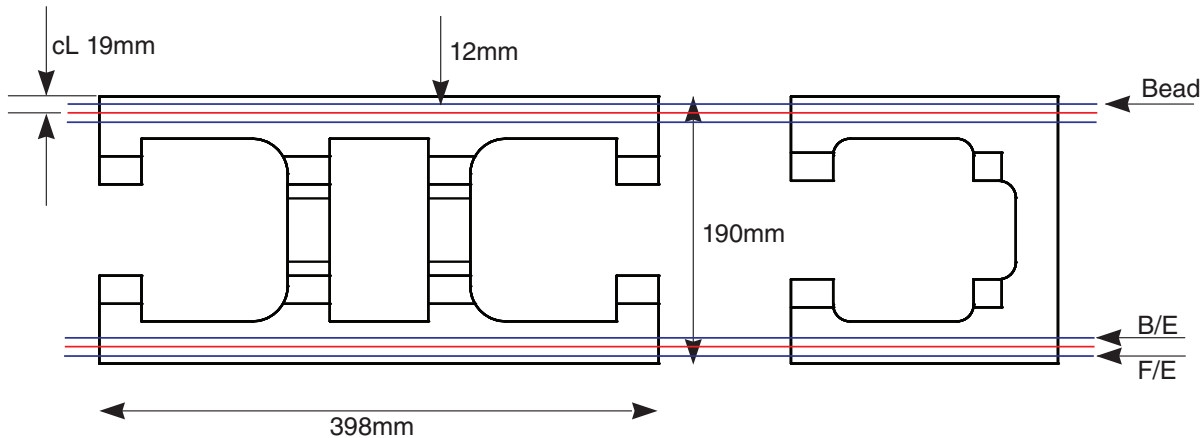
Tel: (02) 4631 1383
Fax: (02) 4631 1402
info@bainesmasonry.com.au

900 Wilton Road
(P.O. Box 89)
Appin NSW 2560

Baines Masonry distributes SRW products in Australia under license from SRW Products (USA)
LOCKBLOCKS® is a registered trademarks of Baines Masonry Blocks Pty Ltd and are used under licence

www.bainesmasonry.com.au

ADHESIVE BEAD PLACEMENT



B/E = Back Edge of Expanded Bead
F/E = Front Edge of Expanded Bead

Bead = Centreline of Bead should be 19mm
from outer edge on 190mm blocks

SRW Rapid-Set polyurethane adhesive is specially formulated for construction and landscape projects needing a fast set-up time. This adhesive has proven to be a premier choice, providing a fast, but permanent bond in 60-90 minutes. It can be used on almost any material, even damp and non-porous surfaces.

DIRECTIONS

1. Make sure the surface is clear of any materials that may prevent adequate adhesion like frost, water, dust, and other contaminants.
2. Cut the tip on slant for 1/4" to 3/8" bead and puncture inner seal.
3. Using caulking gun, apply the adhesive to one of the surfaces.
4. Press surfaces firmly together with a slight twisting motion.

USER TIPS

1. Not for continuous submersion or use below the waterline.
2. When using on non-porous materials like foam, metal, etc. apply a light mist of water during application to speed curing.
3. Cure times vary depending on humidity, porosity, temperature, and materials bonded together.
4. Not intended for direct contact with flames or fire brick.

CLEANUP

Uncured adhesive may be cleaned with mineral spirits. Dispose of contents/container to hazardous or special waste collection point.



**BAINES
MASONRY**
Quality First

Contact us today and we will help you start reducing costs on your next project!

Tel: (02) 4631 1383
Fax: (02) 4631 1402
info@bainesmasonry.com.au

900 Wilton Road
(P.O. Box 89)
Appin NSW 2560

Baines Masonry distributes SRW products in Australia under license from SRW Products (USA)
LOCKBLOCKS® is a registered trademarks of Baines Masonry Blocks Pty Ltd and are used under licence