



PLEASE ENSURE YOU HAVE READ
AND FULLY UNDERSTOOD THIS
GUIDE BEFORE INSTALLATION!

Lighted Magnifying Mirror Installation Guide

YOUR STEP-BY-STEP GUIDE TO THE
PERFECT INSTALLATION

Lighted Magnifying Mirrors

ablaze
MIRRORS

Thank You for your purchase

A message from customer care

Thank you for choosing a Thermogroup product. Our commitment to simple, honest, on-time quality service ensures that we are here to help throughout every stage of your project from idea to installation and, most importantly, after sales support.

This instruction manual provides a step-by-step guide to a perfect installation as well as details on the warranty and how to get Technical Support should you need it. To ensure a safe, hassle-free installation please take the time to read this guide in full before you start.

This product is covered by a 1 Year warranty, subject to terms and conditions. Be sure to keep the receipt as proof of purchase, this will be required to validate your warranty.

If you have any questions about your Ablaze Magnifying Mirror or any of our other products call our Technical Support team on 1300 368 631 We will do our best to find a solution and will always give that little bit extra...

Thanks again for choosing Thermogroup products.

Do's & Don'ts

Do's

- ✔ Read and understand this installation guide in full before installation
- ✔ Observe and adhere to electrical guidelines and IP ratings when installing your magnifying mirror in wet areas
- ✔ Ensure all electrical work is carried out and tested by a qualified electrical professional
- ✔ Ensure the unit is fully earthed
- ✔ Take note of how to suitably care for and maintain your product

Don'ts

- ✘ Do not attempt to carry out any electrical work if you are not a fully qualified electrician
- ✘ Do not commence any maintenance work unless you are fully qualified or have spoken to the supplier

(Any Model code ending in 'E' [Exposed wiring] does not require an electrician).



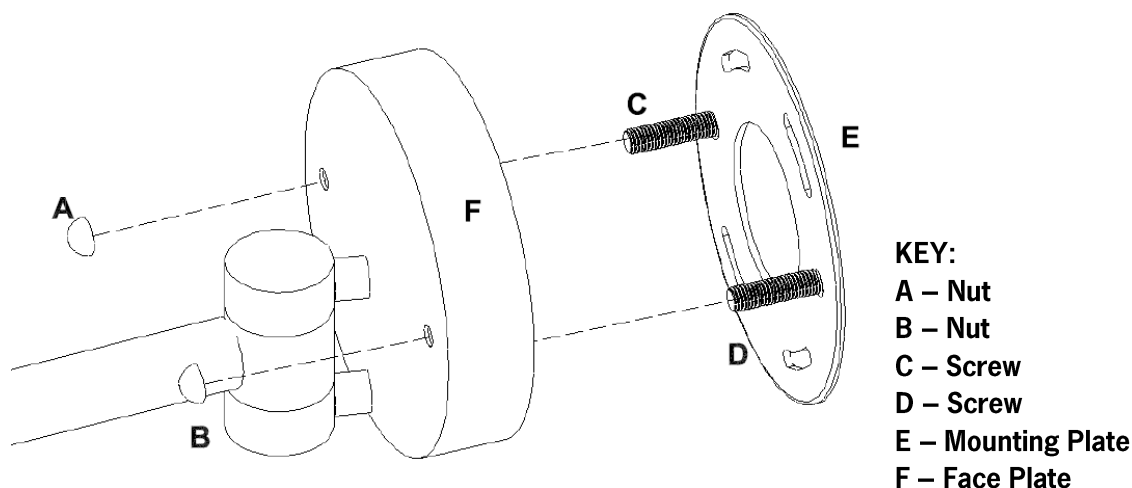
Round Lighted Magnifying Mirror Install Guide

Follow the Installation Guide below if you have any of the following Models:

- L252CSMC/E
- L253CSMC/E
- L255CSMC/E
- L155CSMC/E
- L258CSMC/E
- LR257CSM
- L252CSMCB
- L252GSMC/E

Installation:

- Step 1.** Begin by determining the appropriate location and height. We recommend approximately 150cm from the floor if the mirror is to be used while standing, and 120cm from the floor if used while seated.
- Step 2.** Remove the unit from its packaging and lay it carefully on a stable surface on top of the product bag so that it does not get scratched.
- Step 3.** Remove nuts A & B from screws C & D. Separate mounting plate E from face plate F (see diagram below).
- Step 4.** Using mounting template E determine the exact location for the magnifying mirror and mark this onto the wall.
- Step 5. Caution:** Check the internal wall location for structural strength. Injury to people or damage to the mirror and/or mounting surface may result if mirror is pulled from the surface. To limit the likelihood of such injury or damage, mount the mirror on a structural wall material that is sound.
- Step 6.** Drill holes and insert the wall plugs provided then proceed to mount bracket E to the wall.
- Step 7.** For Hard Wired Models refer to wiring instructions on page 5.
- Step 8.** Lift the magnifying mirror and slide screws C and D back through the face plate and fasten in position with nuts A and B and ensure these are tight.
- Step 9.** For exposed wired mirrors you can now plug the magnifying mirror directly into a power point.



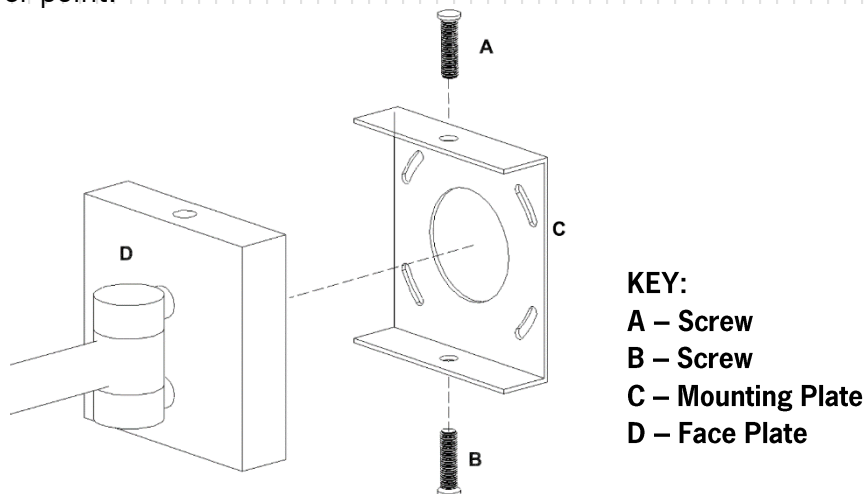
Square Lighted Magnifying Mirror Install Guide

Follow the Installation Guide below if you have any of the following Models:

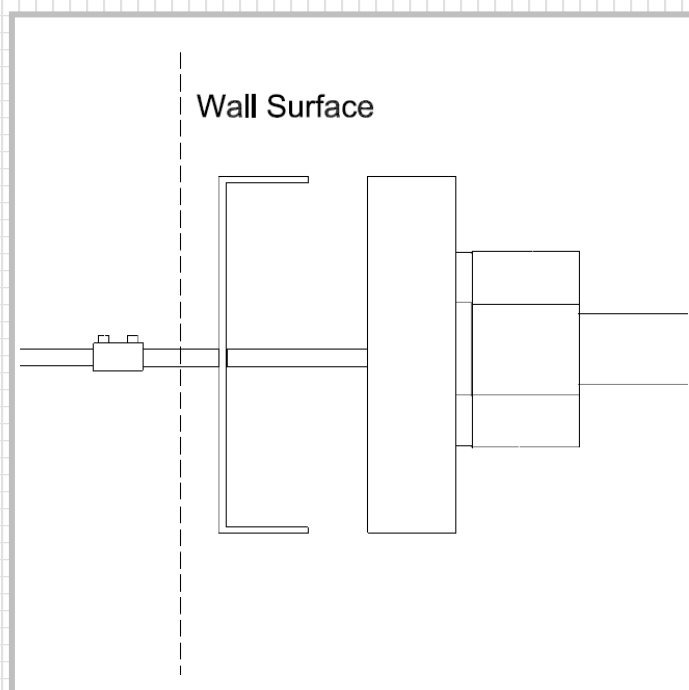
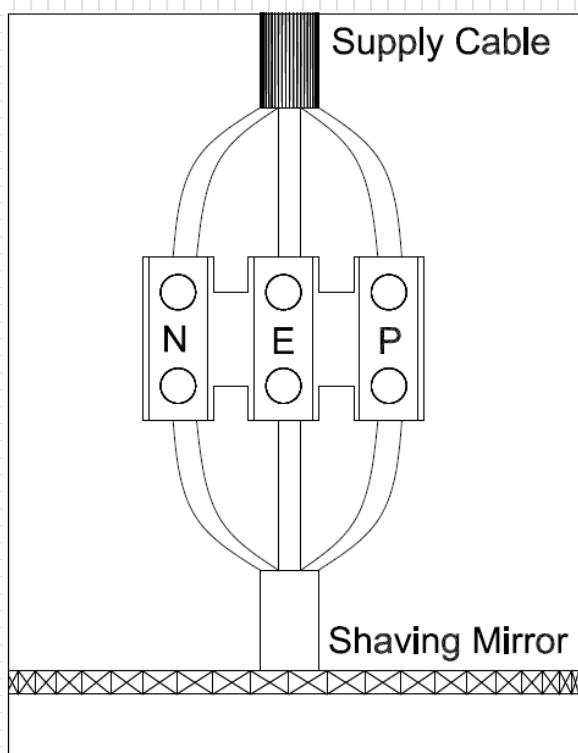
- LS205CSMC/E
- LS253CSMA
- LR253CSM
- LS205CSMCB
- LS205GSMC/E

Installation:

- Step 1.** Begin by determining the appropriate location and height. We recommend approximately 150cm from the floor if the mirror is to be used while standing, and 120cm from the floor if used while seated.
- Step 2.** Remove the unit from its packaging and lay it carefully on a stable surface on top of the product bag so that it does not get scratched.
- Step 3.** Remove screws A & B from the face plate using a Philips head screw driver. Separate mounting plate C from face plate D. (See diagram below).
- Step 4.** Using mounting template C determine the exact location for the magnifying mirror and mark this onto the wall.
- Step 5. Caution:** Check the internal wall location for structural strength. Injury to people or damage to the mirror and/or mounting surface may result if mirror is pulled from the surface. To limit the likelihood of such injury or damage, mount the mirror on a structural wall material that is sound.
- Step 6.** Drill holes and insert the wall plugs provided then proceed to mount bracket C to the wall.
- Step 7.** For Hard Wired Models refer to wiring instructions on page 5
- Step 8.** Lift the magnifying mirror back onto mounting plate C so that face plate D is now sitting flush against the wall.
- Step 9.** Refit screws A & B and tighten to hold the magnifying mirror firmly to the mounting plate
- Step 10.** For exposed mirrors you can now plug the magnifying mirror directly into a power point.



Electrical Wiring Guide



Wiring Guide:

- Step 1.** Ensure you have 240v supply cable located at the centre of where you wish to mount your mirror
- Step 2.** Ensure the power is switched off before carrying out any electrical work
- Step 3.** Ensure you have a hole into the wall large enough to fit the connector box on the magnifying mirror
- Step 4.** Connect the supply cable into the connector box as shown in diagram and tighten firmly – it is important to make sure you earth the unit
- Step 5.** We recommend taping the connection box with electrical tape for added strength.

You may now continue to install the magnifying mirror.

! IMPORTANT !

- ⚠ ALL ELECTRICAL WORK IS TO BE CARRIED OUT BY A QUALIFIED ELECTRICIAN IN ACCORDANCE WITH ELECTRICAL GUIDELINES**
- ⚠ THIS UNIT IS 240V AT THE BASE SO IT NEEDS TO BE INSTALLED IN THE APPROPRIATE ZONE (OUTSIDE OF ZONE 1) AT THE DISCRETION OF THE ELECTRICIAN.**

Warranty

Thermogroup covers all its products with a satisfaction guarantee. In addition, Thermogroup will supply a replacement product where a fault is shown to be caused by manufacture, materials or workmanship providing the goods have been installed correctly and according to installation instructions. This guarantee does not include removal, freight or installation costs. Thermogroup's products come with guarantees that cannot be excluded under Australian Consumer Law and you are entitled to a replacement or refund for a major failure & compensation for any other reasonable foreseeable loss or damage. You are also entitled to have the goods repaired or replaced if the goods fail to be of acceptable quality and the failure does not amount to a major failure.

All of the standard Ablaze Magnifying Mirrors have a 1 Year warranty. To use the warranty, repair or service the customer must provide purchase invoice/receipt, and any other relevant details.

If the product develops a fault within the warranty period due to normal wear and tear, Ablaze mirrors at its discretion will recognise whether it's a faulty product or not. If it is impossible or not economical for the manufacturer to repair the product, the manufacturer will replace the faulty product with a new unit of the same model or if there is no stock available of the same model as the product, the manufacturer will replace the product with a new unit of a similar size. No responsibility can be taken for altered dimensions and lining up of existing holes.

The repair service offered within the warranty period only covers the faults and problem as developed from the manufacturer's errors. Any damage caused by improper use or carelessness or incorrect wiring is not covered.

Ablaze Mirrors is not responsible for any monetary loss or injuries caused by improper use of this product.

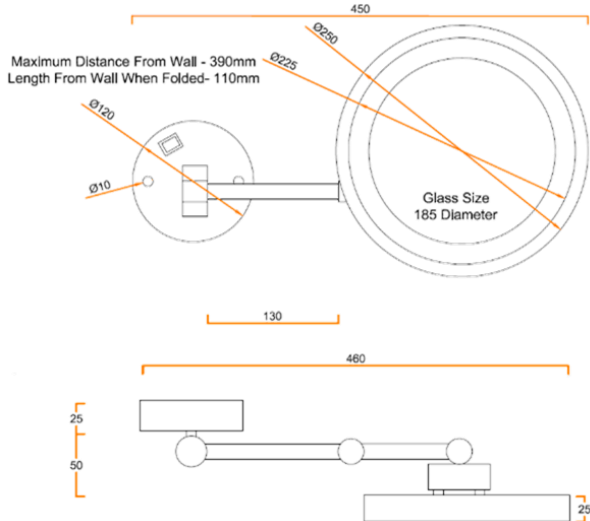
Mirror Care

- ⚠ Your mirror takes minimum maintenance for years of service. When cleaning the mirror, ensure that you have unplugged it from the power outlet or turned the mirror off
- ⚠ Clean the mirror with any glass cleaner or soap and water
- ⚠ Do not use any abrasive cleaner on the mirror frame
- ⚠ Do not switch on the mirror until you are certain it is completely dry
- ⚠ Do not submerge mirror in water or use excessive amount of water for cleaning purposes
- ⚠ This appliance is intended for household use
- ⚠ To store the mirror, use original packaging
- ⚠ If the mirror becomes inoperable, do not attempt to repair it yourself. Refer to a qualified electrician.

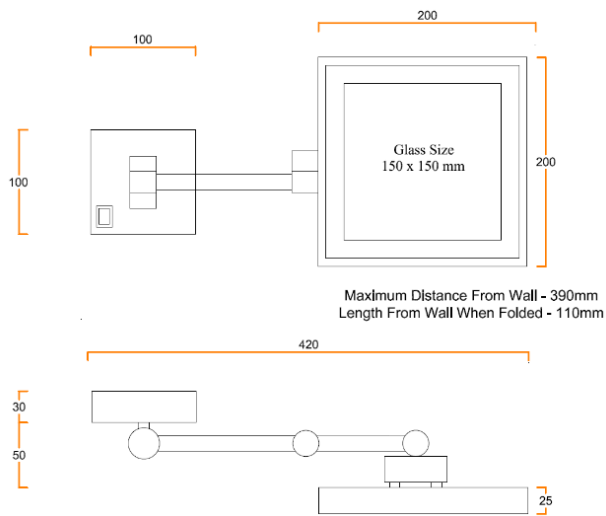


Line Drawings

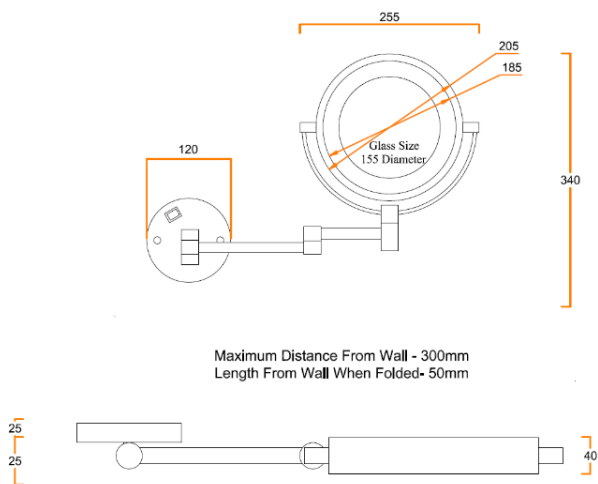
L252CSMC/E , L252GSMC/E , L253CSMC/E L252CSMCB , L255CSMC/E



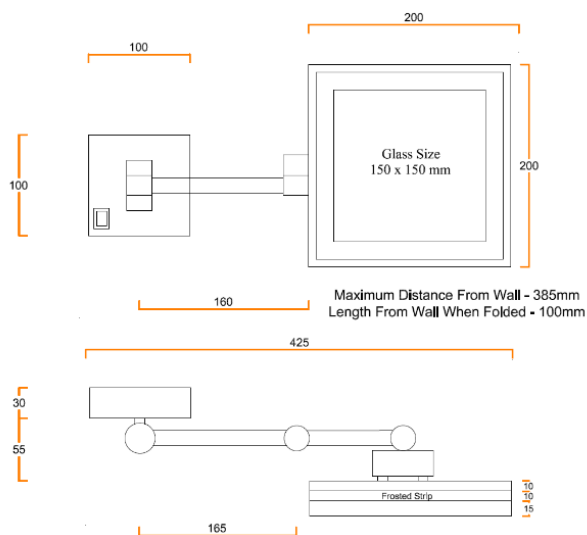
LS205CSMC/E , LS205GSMC/E LS205CSMCB



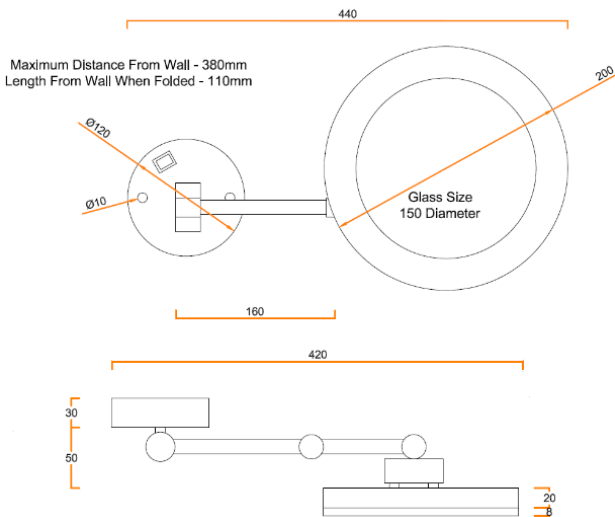
L155CSMC/E , L258CSMC/E



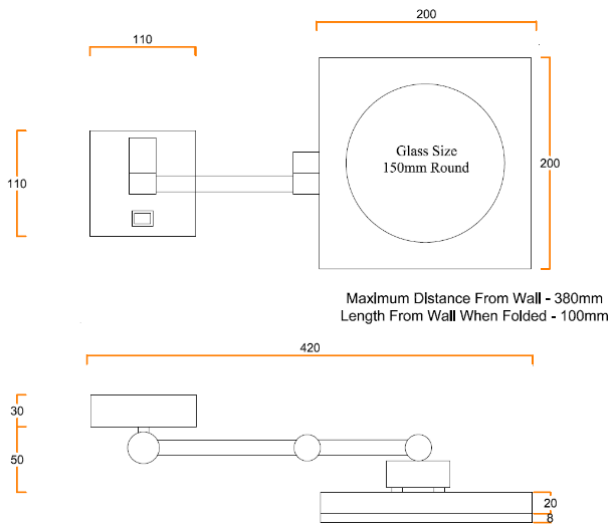
LS253CSMA



LR253CSM



LR257CSM



Technical Specifications

STOCK NO	DESCRIPTION	SIZE (MM)	ARM LENGTH (MM)
L252CSMC/E	Chrome, 3x Magnification, White LED	250 ø	450
L253CSMC/E	Chrome, 3x Magnification, Warm LED	250 ø	370
L255CSMC/E	Chrome, 5x Magnification, White LED	250 ø	370
L155CSMC/E	Chrome, 1 & 5x Magnification, White LED	200 ø	300
L258CSMC/E	Chrome, 1 & 8x Magnification, White LED	200 ø	340
LR257CSM	Chrome, 7x Magnification, White LED	200 ø	380
L252CSMCB	Matt Black, 3x Magnification, White LED	200 ø	450
L252GSMC/E	Gold, 3x Magnification, White LED	200 ø	450
LS205CSMC/E	Chrome, 3x Magnification, White LED	200x200	390
LS253CSMA	Chrome, 3x Magnification, White LED	200x200	305
LR253CSM	Chrome, 3x Magnification, White LED	200x200	416
LS205CSMCB	Matt Black, 3x Magnification, White LED	200x200	390
LS205GSMC/E	Gold, 3x Magnification, White LED	200x200	390

UK Enquiries

Thermogroup UK
sales@thermogroupuk.com
www.thermogroupuk.com
 0800 019 5899

EU Enquiries

Thermogroup EU
sales@thermogroupeu.com
www.thermogroupeu.com
 00353 (0)1 866 0584

AU Enquiries

Thermogroup AU
sales@thermogroup.com.au
www.thermogroup.com.au
 1300 368 631

Thermogroupau



GOOD HEATING PRODUCTS