

LED Downlights range




Lighting Council
AUSTRALIA
MEMBER 2014





I BOX-90



ML-1BOX-90 white + neutral white + warm white with white and brushed aluminium trim

Features & Benefits

- The 'All in 1' downlight
- White, Neutral White and Warm White outputs in one downlight
- No special wiring required
- Designer finish with slimline lip & recessed face
- Inbuilt heat sink for long lamp life
- High output LED chips
- Compatible with most automation systems
- Opaque diffuser
- No harmful effects or UV output
- Large terminals for quick wiring
- Replaceable LED module for future maintenance

UPGRADES: Square trim, 316 stainless steel trim, 130 mm trim, 170 mm adapter plate, Black trim, Brass trim, Surface mounted enclosure (white or silver).

Technical Information

Total power consumed: < 12W*
Lumen output: 1100lm (W), 1000lm (NW), 900lm (WW)
Colour temperature: 6000K (W) + 4000K (NW) + 3000K (WW)
IP rating: IP44
Efficacy: 75-92lm/W
Beam angle: 95 degrees
Dimmable: Yes
Power supply: 350mA constant current (ML-PS350-1BOX90)
Average life: 40,000 hrs**
Warranty: Four years (Seven years for PLI)
Diameter 110 mm | Depth 66 mm | Cut-out 90 mm
Kit includes: 1 x LED downlight (white trim), 1 x brushed aluminium trim, 1 x dimmable driver with flex & plug

* Total power consumed including driver

**Average life calculated on expected average lifespan
(W) = White, (NW) = Neutral White, (WW) = Warm White



The 'All in 1' downlight:
3 output colours &
2 trims included

WHITE

NEUTRAL WHITE

WARM WHITE



A15

- 16W
- 60° BEAM ANGLE
- 25° GIMBLE ANGLE
- DIMMABLE
- 40,000 HRS LIFE
- 4 YEARS WARRANTY

ML-A15 white / neutral white / warm white with white trim
 ML-A15BA white / neutral white / warm white with brushed aluminium trim

Technical Information

Total power consumed: 16W*
 Lumen output: 1100lm (W), 1100lm (NW), 960lm (WW)
 Colour temperature: 6000K (W), 4000K (NW), 3000 (WW)
 IP rating: IP43
 CRI: 80+
 Efficacy: 64-73lm/W
 Beam angle: 60 degrees
 Gimble angle: 25 degrees
 Dimmable: Yes
 Power supply: 700mA constant current (ML-PS680D)
 Average life: 40,000 hrs**
 Warranty: Four years (Seven years for PLI)
 Diameter 105 mm | Depth 87 mm | Cut-out 90 mm
 Kit includes: 1 x LED downlight, dimmable driver with flex & plug

* Total power consumed including driver
 **Average life calculated on expected average lifespan
 (W) = White, (NW) = Neutral White, (WW) = Warm White

Features & Benefits

- High quality designer finish with an anti-glare & high efficiency optic
- Inbuilt heat sink for long lamp life
- Large 25 degree gimble function
- Compatible with most automation systems
- Diffused lens with refined 60 degree beam
- No harmful effects or UV output
- Easy installation & long life
- Large terminals for quick wiring
- Replaceable LED module for future maintenance

UPGRADES: Dali Driver.



“The Designer Line”
 Directing light to specific areas.



IPART approved

D15+

15W

95°
BEAM ANGLE

CREE
LED CHIPS

DIMMABLE

40,000
HRS LIFE

4
YEARS
WARRANTY

ML-D15+ white / neutral white / warm white with white trim
ML-D15+BA white / neutral white / warm white with brushed aluminium trim

Technical Information

Total power consumed: < 15W*
Lumen output: 1100lm (W), 1050lm (NW), 1000lm (WW)
Colour temperature: 6000K (W), 4000K (NW), 3000K (WW)
IP rating: IP44
CRI: 85+
Efficacy: 69-73lm/W
LED chips: CREE®
Beam angle: 95 degrees
Dimmable: Yes
Power supply: 350mA constant current (ML-PS350D)
Average life: 40,000 hrs**
Warranty: Four years (Seven years for PLI)
Diameter 110 mm | Depth 66 mm | Cut-out 90 mm
Kit includes: 1 x LED downlight, dimmable driver with flex & plug

* Total power consumed including driver
**Average life calculated on expected average lifespan
(W) = White, (NW) = Neutral White, (WW) = Warm White

Features & Benefits

- Designer finish with slimline lip & recessed face
- Inbuilt heat sink for long lamp life
- High output, quality CREE® LED chips
- Compatible with most automation systems
- Opaque diffuser
- No harmful effects or UV output
- Large terminals for quick wiring
- Replaceable LED module for future maintenance

VARIANTS & UPGRADES: RGB Colour changing model, White trim, 316 stainless steel trim, Black trim, Brass trim, Square trims, 130 mm trim, 170 mm adapter plate, IP54 rating, Surface mounted enclosure, Dali driver.



High output CREE® LED chips.

D15+ kit variants:





IPART approved

D1072

10W

95°
BEAM ANGLE

DIMMABLE

40,000
HRS LIFE

4
YEARS
WARRANTY

ML-D1072 white / neutral white / warm white with white trim
ML-D1072BA white / neutral white / warm white with brushed aluminium trim

Technical Information

Total power consumed: < 10W*
Lumen output: 860lm (W), 840lm (NW), 800lm (WW)
Colour temperature: 6000K (W), 4000K (NW), 3000K (WW)
IP rating: IP44
Efficacy: 80-86lm/W
Beam angle: 95 degrees
Dimmable: Yes
Power supply: 300mA constant current (ML-PS300D)
Average life: 40,000 hrs**
Warranty: Four years (Seven years for PLI)
Diameter 85 mm | Depth 66 mm | Cut-out 72 mm
Kit includes: 1 x LED downlight, dimmable driver with flex & plug

* Total power consumed including driver
**Average life calculated on expected average lifespan
(W) = White, (NW) = Neutral White, (WW) = Warm White

Features & Benefits

- Perfect downlight for smaller areas or direct halogen downlight replacement
- Designer finish with slimline lip & recessed face
- Inbuilt heat sink for long lamp life
- Compatible with most automation systems
- Opaque diffuser
- No harmful effects or UV output
- Replaceable LED module for future maintenance

VARIANTS & UPGRADES: Brushed aluminium trim, 316 stainless steel trim, Square trims, IP54 rating, Dali driver.

Ideal for applications requiring 72 mm cut-outs.



D1072 kit variants:





IPART
approved

D1090

10W

95°
BEAM ANGLE

DIMMABLE

40,000
HRS LIFE

4
YEARS
WARRANTY

ML-D1090 white / neutral white / warm white with white trim
ML-D1090BA white / neutral white / warm white with brushed aluminium trim

Technical Information

Total power consumed: < 10W*
Lumen output: 860lm (W), 840lm (NW), 820lm (WW)
Colour temperature: 6000K (W), 4000K (NW), 3000K (WW)
IP rating: IP44
Efficacy: 82-86lm/W
Beam angle: 95 degrees
Dimmable: Yes
Power supply: 300mA constant current (ML-PS300D)
Average life: 40,000 hrs**
Warranty: Four years (Seven years for PLI)
Diameter 110 mm | Depth 56 mm | Cut-out 90 mm
Kit includes: 1 x LED downlight, dimmable driver with flex & plug

* Total power consumed including driver
** Average life calculated on expected average lifespan
(W) = White, (NW) = Neutral White, (WW) = Warm White

Features & Benefits

- Perfect downlight for smaller areas or direct halogen downlight replacement
- Designer finish with slimline lip & recessed face
- Inbuilt heat sink for long lamp life
- Compatible with most automation systems
- Opaque diffuser
- No harmful effects or UV output
- Replaceable LED module for future maintenance

VARIANTS & UPGRADES: Brushed aluminium trim, 316 stainless steel trim, Black trim, Brass trim, Square trims, 130 mm trim, 170 mm adapter plate, IP54 rating, Dali driver, Surface mounted enclosure.

Perfect for applications requiring
less intense outputs.



D1090 kit variants:





IPART approved

B12

12W

95°
BEAM ANGLE

DIMMABLE

40,000
HRS LIFE

4
YEARS
WARRANTY

ML-B12 white / neutral white / warm white with white trim
ML-B12BA white / neutral white / warm white with brushed aluminium trim

Technical Information

Total power consumed: < 12W*
Lumen output: 1100lm (W), 1050lm (NW), 1000lm (WW)
Colour temperature: 6000K (W), 4000K (NW), 3000K (WW)
CRI: 80+
IP rating: IP44
Efficacy: 83-92lm/W
Beam angle: 95 degrees
Dimmable: Yes
Power supply: 350mA constant current (ML-PS350D)
Average life: 40,000 hrs**
Warranty: Four years (Seven years for PLI)
Size: Diameter 110 mm | Depth 66 mm | Cut-out 90 mm
Kit includes: 1 x LED downlight, dimmable driver with flex & plug

* Total power consumed including driver
**Average life calculated on expected average lifespan
(W) = White, (NW) = Neutral White, (WW) = Warm White

Features & Benefits

“The contractors downlight”
w/er finish with slimline lip & recessed face
Inbuilt heat sink for long lamp life
High output LED chips
Compatible with most automation systems
Opaque diffuser
No harmful effects or UV output
Large terminals for quick wiring

VARIANTS & UPGRADES: Brushed aluminium trim,
316 stainless steel trim, Black trim, Brass trim,
Square trims, 130 mm trim, 170 mm adapter plate,
IP54 rating, Dali driver, Surface mounted enclosure.

“The contractors choice”



B12 kit variants:





RT7

7W

80°
BEAM ANGLE

30°
GIMBLE ANGLE

DIMMABLE

30,000
HRS LIFE

2
YEARS
WARRANTY

A complete LED retro-fit solution, featuring the latest COB LED technology and advanced wide beam optics. The new RT7 offers the conventional look of halogen, with the huge energy savings benefits of LED!

The RT7 is designed in Australia from the ground up, with advanced thermal properties & all the excellent dimming capabilities that M-Elec is renowned for. The lamps themselves are also available separately (GU10/7-W/WW)

Features & Benefits

- The perfect 1-for-1 replacement of halogen downlights
- Wide beam angle to give extra light throughout the room
- Dimmable with new COB LED technology
- High quality heat sink and crystal style reflector

ML-RT7 neutral white / warm white, white housing
ML-RT7-BA neutral white / warm white, brushed aluminium housing

Technical Information

Total power consumed: 7W*
Lumen output: 605lm Neutral White, 560lm Warm White
Colour temperature: 4000K Neutral White, 3000K Warm White
IP rating: IP20
CRI: 80+
Efficacy: 80-86lm/W
Beam angle: 80 degrees
Gimble angle: 30 degrees
Dimmable: Yes
Power: 240-265V AC
Average life: 30,000 hrs**
Warranty: Two years
Size: Diameter 101 mm | Height (not including bracket) 93 mm
Kit includes: 1 x GU10 Bulb, 1 x Downlight trim, 1 x Lamp holder, 1 x Terminal block, 1 x Australian approved flex & plug

* Total power consumed including driver
**Average life calculated on expected average lifespan

Perfect LED replacement for
50W halogen lamps.



RT7 variant:





D3



ML-D3 *white / warm white with white housing*
ML-D3-S *white / warm white with silver housing*

Technical Information

Total power consumed: < 3W*
Lumen output: 160lm (W), 140lm (WW)
Colour temperature: 6000K (W), 3000K (WW)
IP rating: IP43
Beam angle: 30 degrees
Gimble angle: 10 degrees
Dimmable: Yes
Power supply: 12V AC/DC
Average life: 40,000 hrs**
Warranty: Four years
Diameter 55 mm | Depth 36 mm | Cut-out 45 mm
Kit includes: 1 x LED downlight (**driver not included**)

* Total power consumed including driver
**Average life calculated on expected average lifespan
(W) = White, (WW) = Warm White

Features & Benefits

Perfect for highlighting art and features
Narrow beam angle
10 degree gimble
Compact size
Very low power consumption
AC or DC input
Dimmable if powered by dimmable power supply



D3 variant:

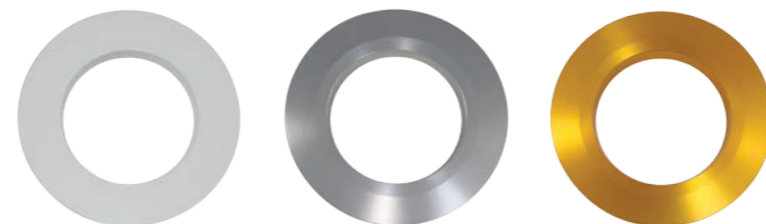
ACCESORIES & UPGRADES

Round trims Ø 85/110 mm, suits Ø 72/90 mm downlights (cut-out size)



72 mm	ML-D72R-T	ML-D72RBA-T	ML-D72-316T	
90 mm	ML-D90R-T	ML-D90RBA-T	ML-D90-316T	ML-D90R-TB

Round trims Ø 130 mm, suits Ø 90 mm downlights



ML-D90-130T ML-D90-130T-BA ML-D90-130T-BRASS

Adapter plate Ø 170 mm



ML-D90-170T (white)
ML-D90BA-170T (brushed aluminium)

Square trims, suits 72 mm & 90 mm downlights



72 mm	ML-D72SQ-T	ML-D72SQBA-T	ML-D72SQ-316T
90 mm	ML-D90SQ-T	ML-D90SQBA-T	ML-D90SQ-316T

Surface mounted enclosure, suits Ø 90 mm downlights



ML-D90-SM ML-D90BA-SM

Mounting bracket and fixtures included

Dali driver & IP54 Rating



Dali drivers



phone: 1300 222 445 | www.melec.com.au

