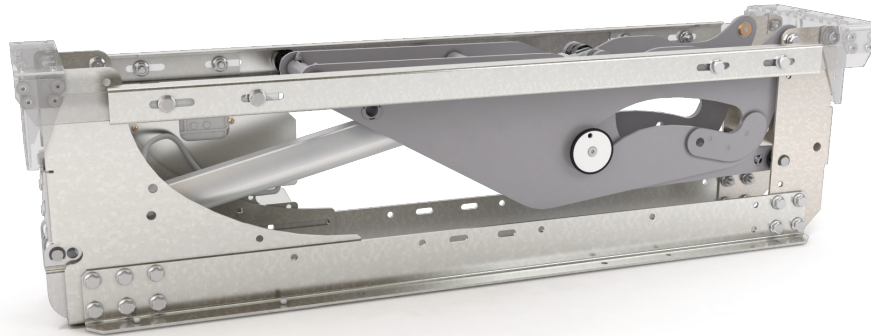
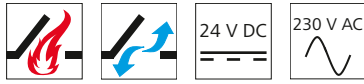


# SDS 3



SDS 3 / YouTube

## Performance features

- » For opening and closing skylights for ventilation and smoke extraction applications up to an opening angle of 170°
- » Outstandingly quiet drive for convenient daily ventilation
- » Up to 2200 N of max. system load (skylight incl. snow load) thanks to optional power pack
- » Maximum coupling weight of 90 kg (max. opening angle of 120°)
- » Electronic system for SA and SZ signalling that can have modules added to it, BSY+ (synchronous operation of 2 systems) and interface to the ACB Gateway
- » Maximum opening angle can be adjusted using D+H SCS software
- » SDS 3-0800 basic system for flexible use in skylights at an installation clearance dimension of 800 mm - 999 mm
- » SDS 3-1000 basic system for flexible use in a skylight at an installation clearance dimension of 1000 mm - 1200 mm
- » SDS 3-1200 basic system for flexible use in a skylight at an installation clearance dimension of 1201 mm - 1400 mm
- » Emergency unlocking already integrated in basic system
- » System that can be expanded using modules with customer-specific installation sets and dimensions (up to 2 m)
- » Easy installation thanks to pre-installation of the brackets and convenient mounting from above
- » Mechanical locking mechanism for increased wind loads and burglary protection incl. emergency unlocking (optional)

## Technical data

	SDS 3-0800-1	SDS 3-1000-1	SDS 3-1200-1
Supply	24 V DC / ±15 % / 4 A		
Max. OPENING force incl. snow load	1980 N	2200 N	2200 N
Max. CLOSING force	450 N	500 N	500 N
Nominal locking force on the lift arm	3000 N *	3400 N *	3400 N *
Service life	11000 double strokes **		
OPEN running speed	60 s		
CLOSED running speed	60 s		
Wind load class	1500 Pa ** ****		
Snow load class	750 Pa ** ****		
Type of protection	IP 54		
Temperature range	(-25 °C ****) -5 °C ... +75 °C		
Fire resistance	B300 (30 min / 300 °C)		
Connection	Electronic box, screw terminals		

	SDS 3-0800-5	SDS 3-1000-5	SDS 3-1200-5
Supply	230 V AC / +10 % ... -15 % / 147 VA		
Max. OPENING force incl. snow load	1980 N	2200 N	2200 N
Max. CLOSING force	450 N	500 N	500 N
Nominal locking force on the lift arm	3000 N *	3400 N *	3400 N *
Service life	11000 double strokes **		
OPEN running speed	60 s		
CLOSED running speed	60 s		
Wind load class	1500 Pa ** ****		
Snow load class	750 Pa ** ****		
Type of protection	IP 54		
Temperature range	(-25 °C ****) -5 °C ... +75 °C		
Fire resistance	B300 (30 min / 300 °C)		
Connection	Electronic box, screw terminals		

\* Force at the outer edge of the skylight depends on the skylight dimensions

\*\* Developed in accordance with EN 12101-2

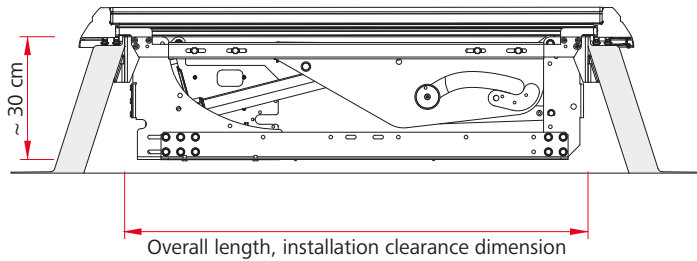
\*\*\* Values for skylight size of 2.25 m<sup>2</sup> (1.5 m x 1.5 m) at a skylight weight of 50 kg.

The value changes in proportion to changes in the skylight size and weight.

The skylight must be suitable for the loads.

\*\*\*\* On request

## Dimensions



## External accessories

- » PS-SDS 3-5
- » BSY+ Modul SDS 3
- » Extension Kit SDS 3-1000
- » PPO-SDS 3
- » Signal Modul (SA-SZ) SDS 3

## Design

Type	Art. No.	Weight
SDS 3-0800-1	27.903.01	18.50 kg
SDS 3-1000-1	27.903.02	18.50 kg
SDS 3-1200-1	27.903.05	19.00 kg
SDS 3-0800-5	27.903.03	18.50 kg
SDS 3-1000-5	27.903.04	18.50 kg
SDS 3-1200-5	27.903.06	19.00 kg